

# **CR 713/SW High Meadow Avenue** **from I-95 to CR 714/SW Martin Highway** **Martin County, Florida**

---

## Project Development and Environment (PD&E) Study

Florida Department of Transportation  
Financial Project ID: 441699-1-22-02

Efficient Transportation Decision Making (ETDM) Number: 14501

Virtual - February 13<sup>th</sup>, 2024

In person - February 15<sup>th</sup>, 2024

THE PRESENTATION WILL BEGIN AT 5:30 PM



# Agenda

- »» Project Team
- »» Non-Discriminatory Policy
- »» Laws and Regulations
- »» Transportation Development Process
- »» Project Location
- »» Purpose and Need
- »» Existing Conditions
- »» Alternatives Evaluation
- »» Environmental Analysis
- »» Public Involvement
- »» Project Schedule
- »» Questions and Answers

# PROJECT TEAM

---



Damaris Williams, P.E., C.P.M.  
Project Manager  
Florida Department of Transportation  
District 4



Paul Carballo, P.E.  
Consultant Project Manager  
Metric Engineering Inc.



Lauren Hatchell  
Public Involvement Coordinator  
Media Relations Group, LLC



# MEETING FORMAT

---

## Online



### Online:

Date: Tuesday, February 13<sup>th</sup>, 2024

Time: 5:30 p.m.

## In-Person



### In-Person:

Date: Thursday, February 15<sup>th</sup>, 2024

Time: 5:30 p.m.

Location: Palm City Community Center,  
2701 SW Cornell Ave, Palm City, FL 34990

# RULES OF ENGAGEMENT

---



This Public Kick-off Meeting is being recorded.



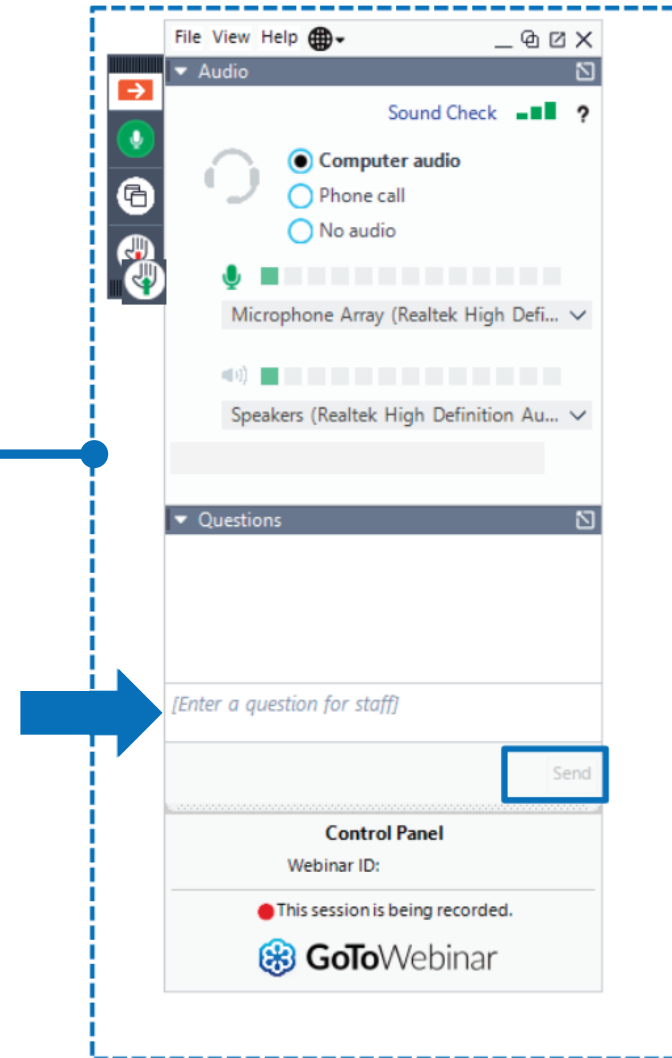
If you experience technical difficulties, please call the help line at 786-352-4351 so a technical support team member may assist you.



All attendees will remain muted throughout the meeting except during the Open Discussion.

At the end of the presentation attendees are also welcome to submit any questions/comments using the GoToWebinar Question Panel and a member of the team will respond during the question-and-answer portion. To request to speak, click the Raise Hand button on the Control Panel and unmute your microphone when your name is called.

# GO TO WEBINAR CONTROL PANEL

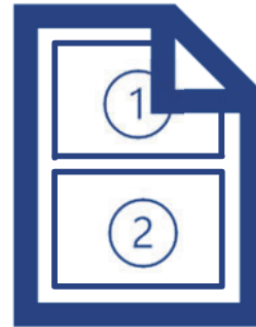


# DIAL-IN BY PHONE ATTENDEES

Dial-in attendees are "listen only"



If you requested or downloaded the presentation



Paper copy of the presentation



Presenter will indicate slide number

[www.fdot.gov/projects/cr713pde](http://www.fdot.gov/projects/cr713pde)



# TO REPORT TECHNICAL ISSUES

---



Type in the  
**Question box**  
on GoToWebinar  
Control Panel



Send an email to:  
manny@graph-  
code.com

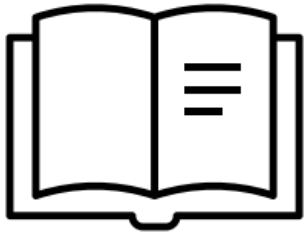


Call:  
786-352-4351



# PUBLIC NOTICE

---



**Florida Administrative Register**



**Property owner/tenant letters**



**Email to project contacts list**



**Department/project webpage**



**Newspapers**



**Social media**

# NON-DISCRIMINATORY POLICY

---

## Title VI Compliance

Public participation is solicited without regard to race, color, national origin, age, sex, religion, disability, or family status. Persons wishing to express concerns relative to FDOT compliance with Title VI may do so by contacting:

**Sharon SinghHagyan**  
District Four Title VI Coordinator  
3400 West Commercial Boulevard  
Fort Lauderdale, FL 33309  
(954) 777-4190  
(866) 336-8435, Ext. 4190 (Toll Free)  
Sharon.SinghHagyan@dot.state.fl.us

**Stefan Kulakowski**  
Statewide Title VI Coordinator  
605 Suwanee Street, MS 65  
Tallahassee, FL 32399  
(850) 414-4764  
(866) 374-3368, Ext. 4742 (Toll Free)  
Stefan.Kulakowski@dot.state.fl.us

# FEDERAL-STATE PARTNERSHIP

---

**The environmental review, consultation and other actions required by applicable federal environmental laws for these projects are being, or have been, carried out by the FDOT pursuant to 23 U.S.C. 327 and a Memorandum of Understanding dated May 26, 2022, and executed by the Federal Highway Administration (FHWA) and FDOT.**

# TRANSPORTATION DEVELOPMENT PROCESS



## Project Development & Environment (PD&E)

### Why it's done:

- Evaluate project feasibility & potential environmental impacts (natural, physical, social, cultural)
- Comply with federal & state environmental laws
- Required to secure federal funding

### What it involves:

- Conducting preliminary engineering
- Evaluating options to avoid, minimize or mitigate potential environmental impacts
- Coordinating with federal, state, & local agencies
- Engaging the public during the transportation decision-making process
- Analyzing alternatives & select a preferred alternative for Final Design

# PROJECT LOCATION

From I-95 to County Road (CR) 714/Martin Hwy



CR 713/SW High Meadow Ave & SW Swallowtail Way



CR 713/SW High Meadow Ave & SW Baneberry Dr



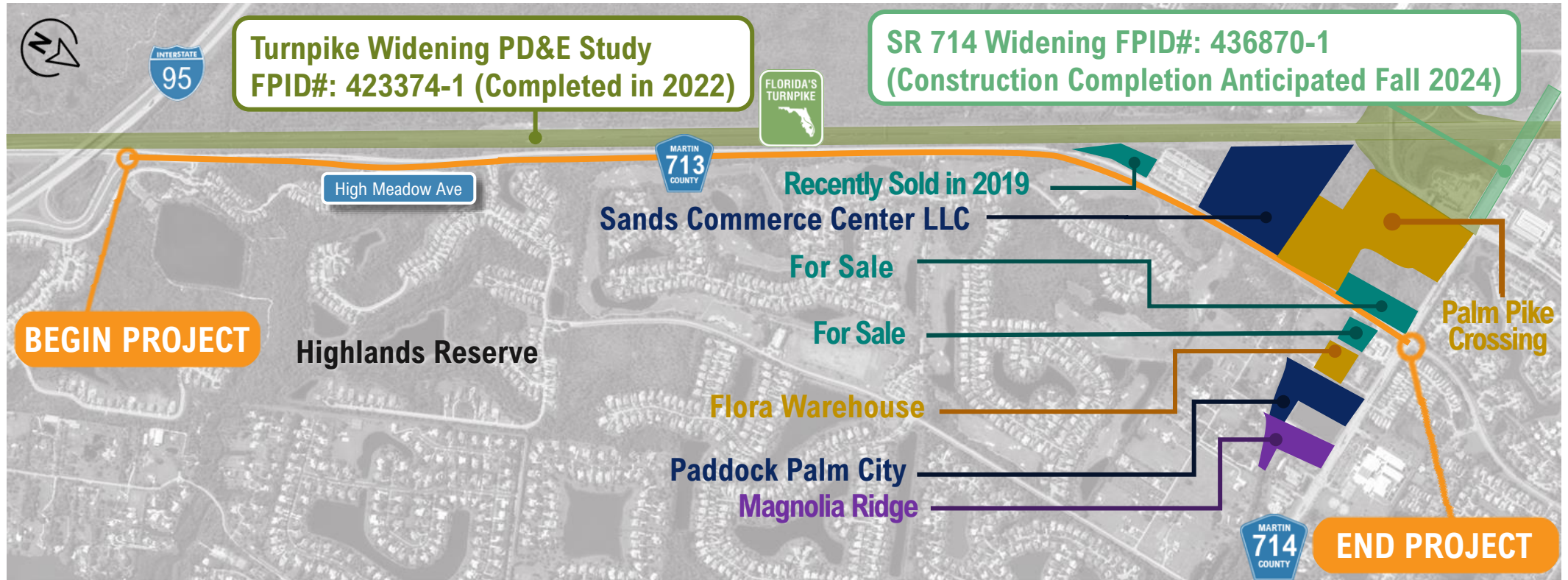
CR 713/SW High Meadow Ave & SW Golden Bear Way



CR 713/SW High Meadow Ave & CR 714/SW Martin Hwy



# ADJACENT PROJECTS / DEVELOPMENT



### Legend

- Constructed
- In Construction/Approved
- In Review
- Potential Project Development

# PROJECT PURPOSE

---

- Improve capacity for local and regional travel
- Improve freight movement
- Improve emergency evacuation
- Enhance economic development

# PROJECT NEED

---

- Capacity: the congestion on the corridor will significantly worsen and result in prolonged delay for residents.
- Transportation Demand: The population of Martin County is projected to increase from 158,431 in 2020 to 193,300 in 2045 which will cause an increase in work-related, recreational, and freight trips in the region.
- The proposed project will provide additional capacity to help accommodate planned development in the area and will improve regional access to I-95.





# PROJECT OBJECTIVE

---

- Improve roadway capacity
  - Address existing and projected traffic demands
    - Potential widening from 2 to 4 lanes
- Improve safety throughout the corridor
- Enhance pedestrian and bicyclist accommodations



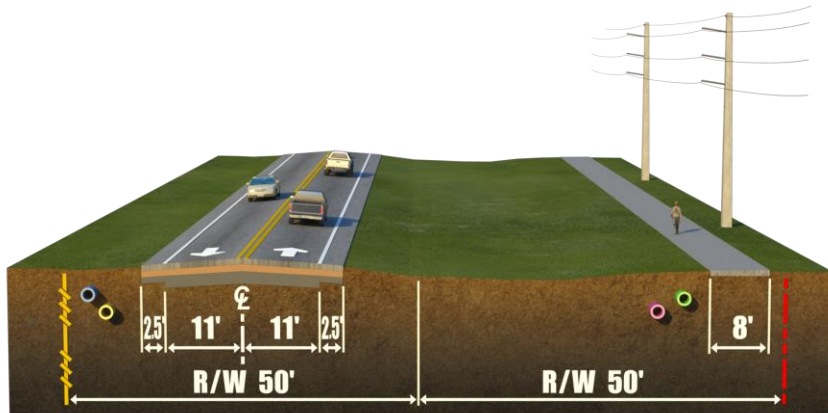


# EXISTING CONDITIONS

## Existing Roadway

- 2-lane with swale drainage
- 2.7 miles
- Minor Arterial
- 100' R/W – Constrained
- 6 to 8-ft sidewalk on east
- Posted Speed varies from 45 to 55 mph

## Existing Typical Section



# EXISTING SAFETY CONDITIONS

## Safety Analysis

Total Crashes (2018-2022): 147

- Leading Crash Types
  - Rear End Crashes: 69 (46.9 %)
  - Sideswipe Crashes: 21 (14.3%)
  - Non-Collision: 17 (11.6%)
  - Left Turn Crashes: 16 (10.9%)
- Severity
  - Injury: 35; Fatality: 0



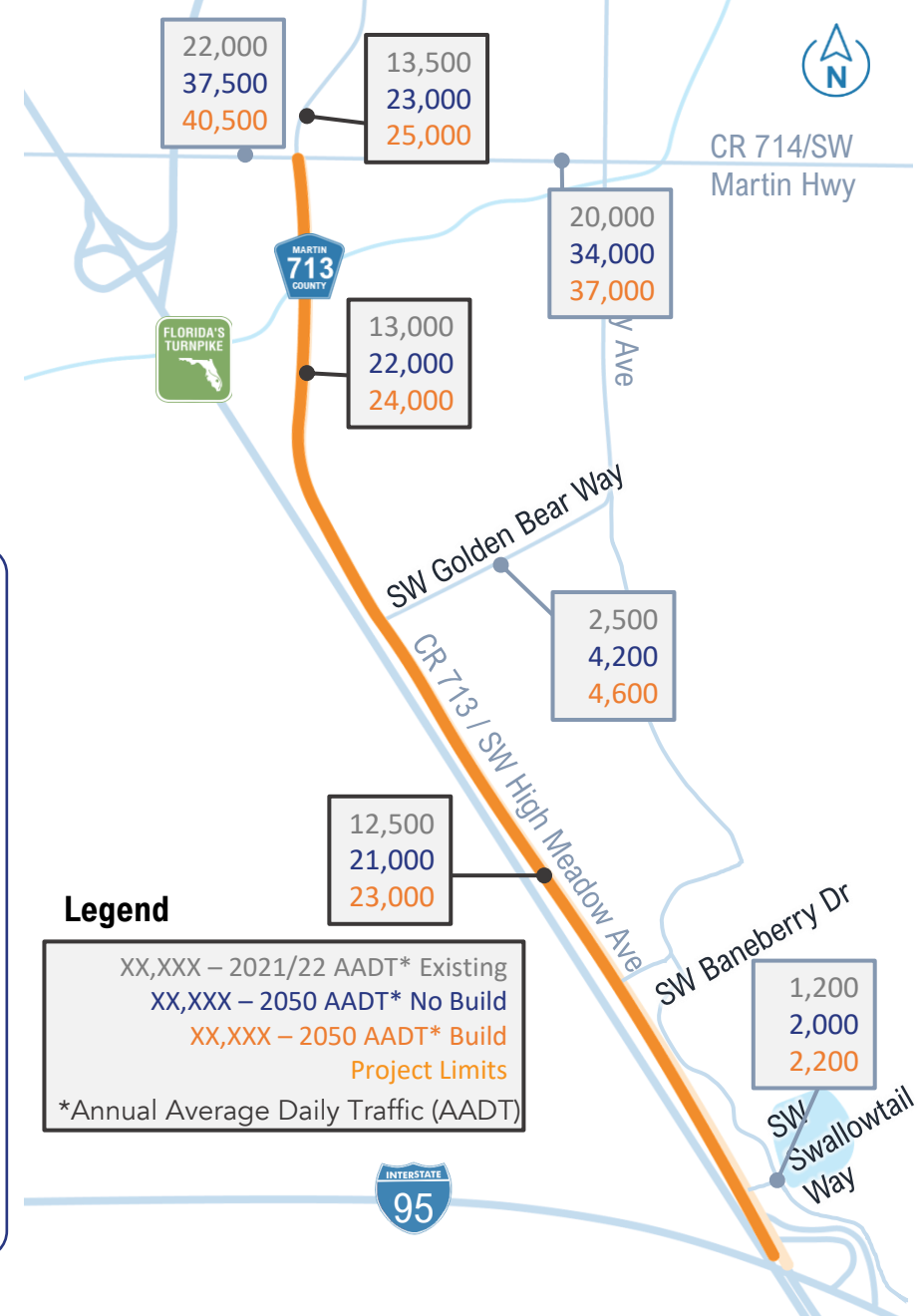


# EXISTING TRAFFIC OPERATIONS

- The traffic volume is projected to increase by 69% by 2050
- Existing Level of Service (LOS) along the corridor is D
  - Projected 2050 LOS F
- Average existing truck percentage 6-9%

Level of Service (LOS)	General Operating Conditions
A	Free flow, with low volumes and high speeds.
B	Reasonably free flow, but speeds are beginning to be restricted by traffic conditions.
C	Stable flow, but most drivers are restricted in the freedom to select their own speeds.
D	Approaching unstable flow, drivers have little freedom to select their own speeds.
E	Unstable flow, may be short stoppages.
F	Forced or breakdown flow; unacceptable congestion; stop-and-go.

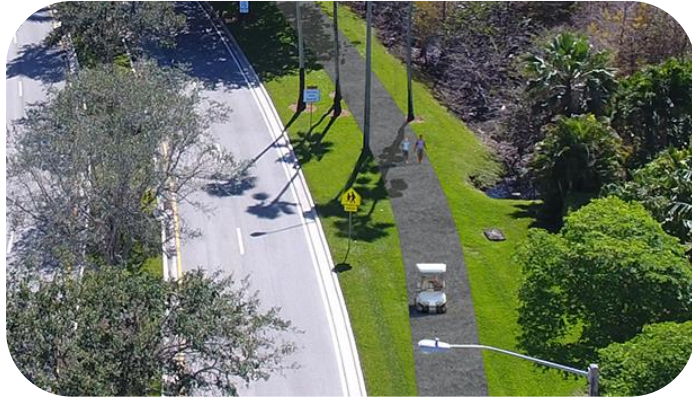
Source: AASHTO Green Book – 6<sup>th</sup> Edition



# ALTERNATIVES EVALUATION

---

Shared Use Path



Sidewalk



Raised Median





# ENVIRONMENTAL ANALYSIS

## Social Impacts

- Land Use Changes
- Social Environment/Cohesion
- Aesthetics
- Economic Impacts
- Mobility
- Relocation Potential

## Natural Resources

- Wetlands
- Water Quality and Quantity
- Sensitive Areas
- Floodplains
- Protected Species and Habitat

## Cultural Resources

- Historic Sites/ Districts
- Archeological Sites

## Physical Impacts

- Traffic Noise
- Air Quality
- Contamination



# PUBLIC INVOLVEMENT

- Public Meeting
  - Public Kick-off Meeting
    - February 13<sup>th</sup>, 2024 (Virtual)
    - February 15<sup>th</sup>, 2024 (In-Person)
  - Alternatives Public Workshop:
    - Summer 2024
  - Public Hearing:
    - Early Spring 2025
- Submit Comments to:
  - Damaris Williams, P.E., C.P.M.
  - Email: [Damaris.Williams@dot.state.fl.us](mailto:Damaris.Williams@dot.state.fl.us)
  - Project Website: [www.fdot.gov/projects/cr713pde](http://www.fdot.gov/projects/cr713pde)

Public comments and questions are welcomed at any time throughout the study.

## Social Media



Facebook: MyFDOTSEFL  
Twitter: @MyFDOT\_SEFL  
Instagram: myfdot\_sefl



County Road (CR) 713/SW High Meadow Avenue PD&E Study from I-95 to CR 714/SW Martin Highway

**Welcome**

The Florida Department of Transportation (FDOT) has initiated a Project Development and Environment (PD&E) Study for County Road (CR) 713/High Meadows Avenue from I-95 to CR 714/Martin Highway in Martin County, Florida. The purpose of the proposed study is to improve capacity for local and regional travel, freight movement, emergency evacuation and to enhance economic development in northeast Martin County.

- **FPID:** 441699-1-22-02
- **Federal Aid Project Number:** TBD
- **ETDM Number:** 14501

Click [here](#) to learn more about the study.

Public involvement is a critical component of the PD&E Study process and we encourage you to become involved and stay connected throughout the entire project. Please visit this website often to get the most up-to-date information on the CR 713 PD&E Study. Project meetings, workshops, and hearings will be advertised on this webpage.

Click [here](#) to be included in the mailing list or to leave a comment.

**Project Development Process**

**WHAT IS A PD&E STUDY?**

A PD&E Study is FDOT's procedure for complying with the National Environmental Policy Act (NEPA) of 1969, and associated federal and state laws and regulations. During this phase, FDOT performs preliminary engineering, evaluates the project impacts to the social, cultural, natural, and physical environments, completes interagency coordination, and engages the public. Public involvement is a key aspect throughout the life of a project. The objective of a PD&E Study is to support decision-making concerning *if, where, and what* should be built to address the identified transportation needs.

<b>1</b>	<b>PLANNING</b>	<b>Why it's done:</b>
<b>2</b>	<b>PROJECT DEVELOPMENT AND ENVIRONMENT (PD&amp;E) STUDY</b>	<ul style="list-style-type: none"><li>• Evaluate project feasibility and potential environmental impacts (natural, physical, social, cultural)</li><li>• Comply with federal and state environmental laws</li><li>• Required to secure federal regulatory approval</li></ul>
<b>3</b>	<b>DDOE</b>	
<b>4</b>	<b>SCOPE OF PLAN ACQUISITION</b>	<b>What it involves:</b>
<b>5</b>	<b>CONSTRUCTION</b>	<ul style="list-style-type: none"><li>• Conducting preliminary engineering</li><li>• Evaluating options to avoid, minimize or mitigate potential environmental impacts</li><li>• Coordinating with federal, state and local agencies</li><li>• Engaging the public in project development</li></ul>
<b>6</b>	<b>MAINTENANCE</b>	<ul style="list-style-type: none"><li>• Select a preferred alternative for Final Design</li></ul>

**District Office**  
Steven C. Braun  
District Four Secretary

3400 W Commercial Blvd.  
Fort Lauderdale, FL 33309

Tel: 954-777-4100  
Toll Free: 1-866-336-8435  
Fax: 850-414-4221  
[E-Mail Us](#)

**Additional Contacts**  
[Staff Directory](#)

**Most Requested**  
[About the Study](#)

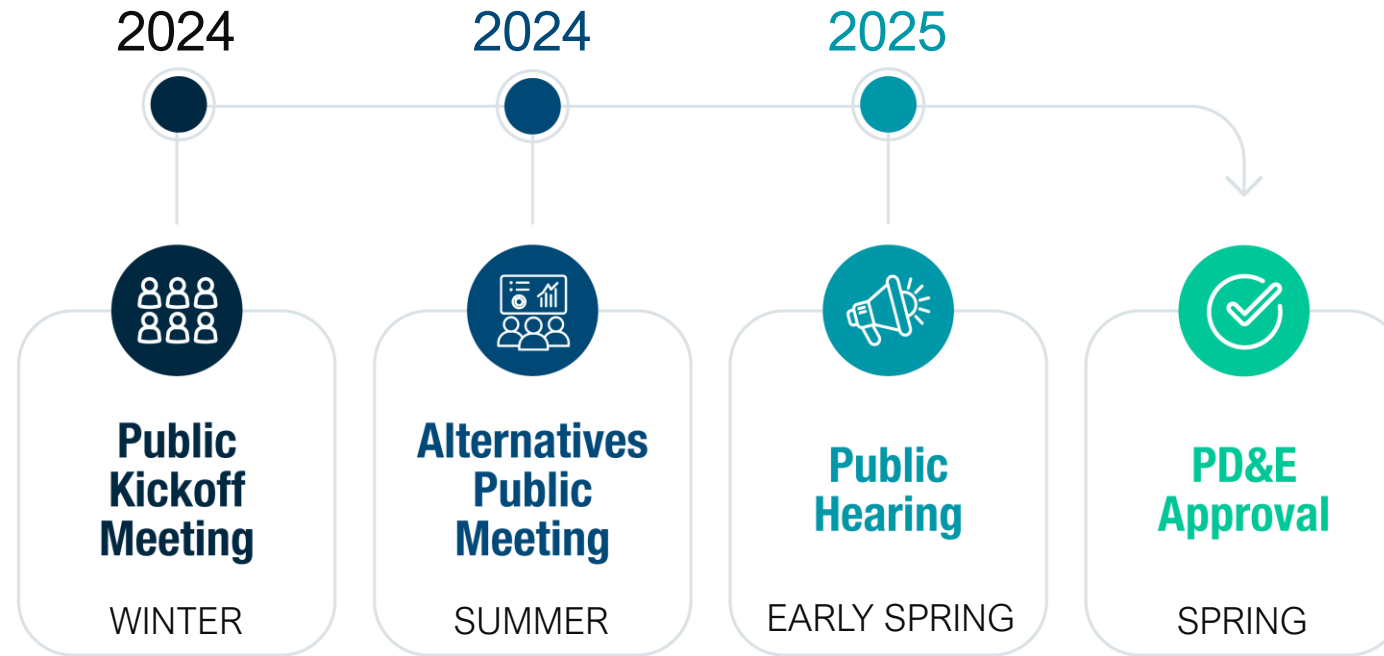
[Contact Us](#)

[Schedule](#)

[Documents and Publications](#)



# PROJECT SCHEDULE



- Design funded in Fiscal Year 2026
- Right-of-Way funded in Fiscal Year 2028
- Construction currently not funded

# HOW TO MAKE A PUBLIC COMMENT

# SUBMITTING COMMENTS AND QUESTIONS TODAY

---



Ways to submit your comments:

1. Online using the GoToWebinar by typing your comment/question in the Question Box
2. Verbally by using the “Raise Hand” feature on your control panel to be unmuted
3. Online at project website
4. By phone or email to Project Manager
5. By U.S. mail to Project Manager

## Project Website:

---

[www.fdot.gov/projects/cr713pde](http://www.fdot.gov/projects/cr713pde)

## Project Manager Contact Information:

---

Damaris Williams, P.E., C.P.M.  
FDOT District Four  
3400 West Commercial Boulevard  
Fort Lauderdale, FL 33309

Email: [Damaris.Williams@dot.state.fl.us](mailto:Damaris.Williams@dot.state.fl.us)  
Telephone: 954-777-4679  
Toll-Free: 866-336-8435, Ext. 4679

# ABOUT YOUR COMMENTS AND QUESTIONS

---



All comments and questions are part of the **Public Record.**



Please submit your comments and questions.



All registrants will receive a link to the **meeting recording.**

# QUESTIONS / ANSWERS

# THANK YOU FOR PARTICIPATING !

---

## Project Website:

---

[www.fdot.gov/projects/cr713pde](http://www.fdot.gov/projects/cr713pde)

## Project Manager Contact Information:

---

Damaris Williams, P.E., C.P.M.  
FDOT District 4  
3400 West Commercial Boulevard  
Fort Lauderdale, FL 33309

Email: [Damaris.Williams@dot.state.fl.us](mailto:Damaris.Williams@dot.state.fl.us)  
Telephone: 954-777-4679  
Toll-Free: 866-336-8435, Ext. 4679

Submit Comments  
and Questions



*Thank you  
for attending the  
Public Kick-Off Meeting  
for the  
CR 713/SW High Meadow  
Avenue PD&E Study*







**DRIVE SOBER OR  
GET PULLED OVER**

## We are experiencing technical difficulties

Our team is actively working to fix the issue and hope to have this resolved soon.

Thank you for your patience.



## We are experiencing technical difficulties

This meeting will be postponed.  
Information will be posted on the project website:

[www.fdot.gov/projects/cr713pde](http://www.fdot.gov/projects/cr713pde)

Thank you for your patience.

