



CR 510 Project Development and Environment (PD&E) Study

**From 58th Avenue to East of SR 5/US-1, Indian River County, Florida
Florida Department of Transportation – District Four**

Financial Project ID: 441692-1-22-02

Efficient Transportation Decision Making (ETDM) Number: 14492

Virtual Public Kick-off Meeting – January 26, 2023

In-Person Public Kick-off Meeting – January 31, 2023

THE PRESENTATION WILL BEGIN AT 5:30 PM



AGENDA

- Project Team
- Meeting Format
- Rules of Engagement
- Transportation Development Process
- Project Location
- Adjacent Projects
- Purpose and Need
- Existing Conditions
- Alternatives Evaluation
- Environmental Analysis
- Public Involvement
- Project Schedule
- Questions and Answers

PROJECT TEAM



Maria Formoso, P.E.
 Project Manager
 Florida Department of Transportation
 District 4



Julieta Manso, P.E.
 Consultant Project Manager
 Hanson Professional Services Inc.



Lauren Hatchell
 Public Involvement Coordinator
 Media Relations Group, LLC



MEETING FORMAT

Online



Online:

Date: Thursday, January 26, 2023

Time: 5:30 p.m.

In-Person



In-Person:

Date: Tuesday, January 31, 2023

Time: 5:30 p.m.

Location: North Indian River County Library
 1001 Sebastian Boulevard
 Sebastian, Florida 32958

RULES OF ENGAGEMENT



This Public Kick-off Meeting is being recorded.

If you experience technical difficulties, please call the help line at 786-352-4351 so a technical support team member may assist you.

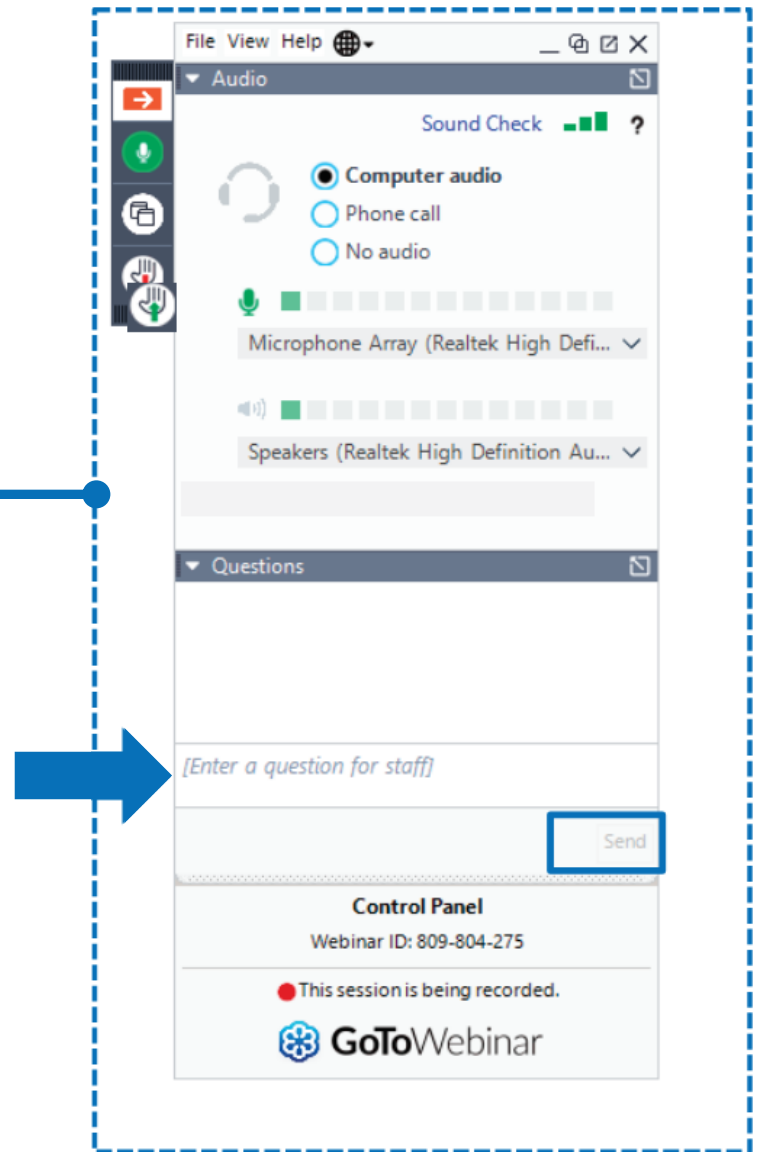


All attendees will remain muted throughout the meeting except during the Open Discussion.



At the end of the presentation attendees are also welcome to submit any questions/comments using the GoToWebinar Question Panel and a member of the team will respond during the question-and-answer portion. To request to speak, click the Raise Hand button on the Control Panel and unmute your microphone when your name is called.

GO TO WEBINAR CONTROL PANEL

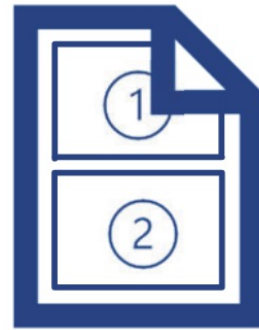


DIAL-IN BY PHONE ATTENDEES

Dial-in attendees are “listen only”



If you requested or downloaded the presentation



Paper copy of the presentation



Presenter will indicate slide number

www.fdot.gov/projects/cr510-58ave-us1

TO REPORT TECHNICAL ISSUES



Type in the
Question box
on GoToWebinar
Control Panel

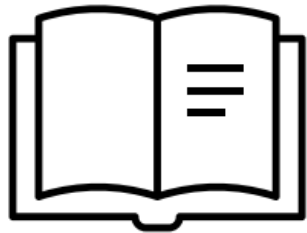


Send an email to:
manny@graph-code.com



Call:
786-352-4351

PUBLIC NOTICE



Florida Administrative Register



Property owner/tenant letters



Email to project contacts list



Department/project webpage



Newspapers



Social media

NON-DISCRIMINATORY POLICY

Title VI Compliance

Public participation is solicited without regard to race, color, national origin, age, sex, religion, disability, or family status. Persons wishing to express concerns relative to FDOT compliance with Title VI may do so by contacting:

Sharon Singh Hagyan

District Four Title VI Coordinator

3400 West Commercial Boulevard

Fort Lauderdale, FL 33309

(954) 777-4190

(866) 336-8435, Ext. 4190 (Toll Free)

Sharon.SinghHagyan@dot.state.fl.us

Stefan Kulakowski

Statewide Title VI Coordinator

605 Suwanee Street, MS 65

Tallahassee, FL 32399

(850) 414-4764

(866) 374-3368, Ext. 4742 (Toll Free)

Stefan.Kulakowski@dot.state.fl.us

FEDERAL-STATE PARTNERSHIP

The environmental review, consultation and other actions required by applicable federal environmental laws for these projects are being, or have been, carried out by the FDOT pursuant to 23 U.S.C. 327 and a Memorandum of Understanding dated May 26, 2022, and executed by the Federal Highway Administration and FDOT.

TRANSPORTATION DEVELOPMENT PROCESS

1 PLANNING

2 PROJECT DEVELOPMENT AND ENVIRONMENT (PD&E) STUDY

3 DESIGN

4 RIGHT OF WAY ACQUISITION (IF NEEDED)

5 CONSTRUCTION

6 MAINTENANCE

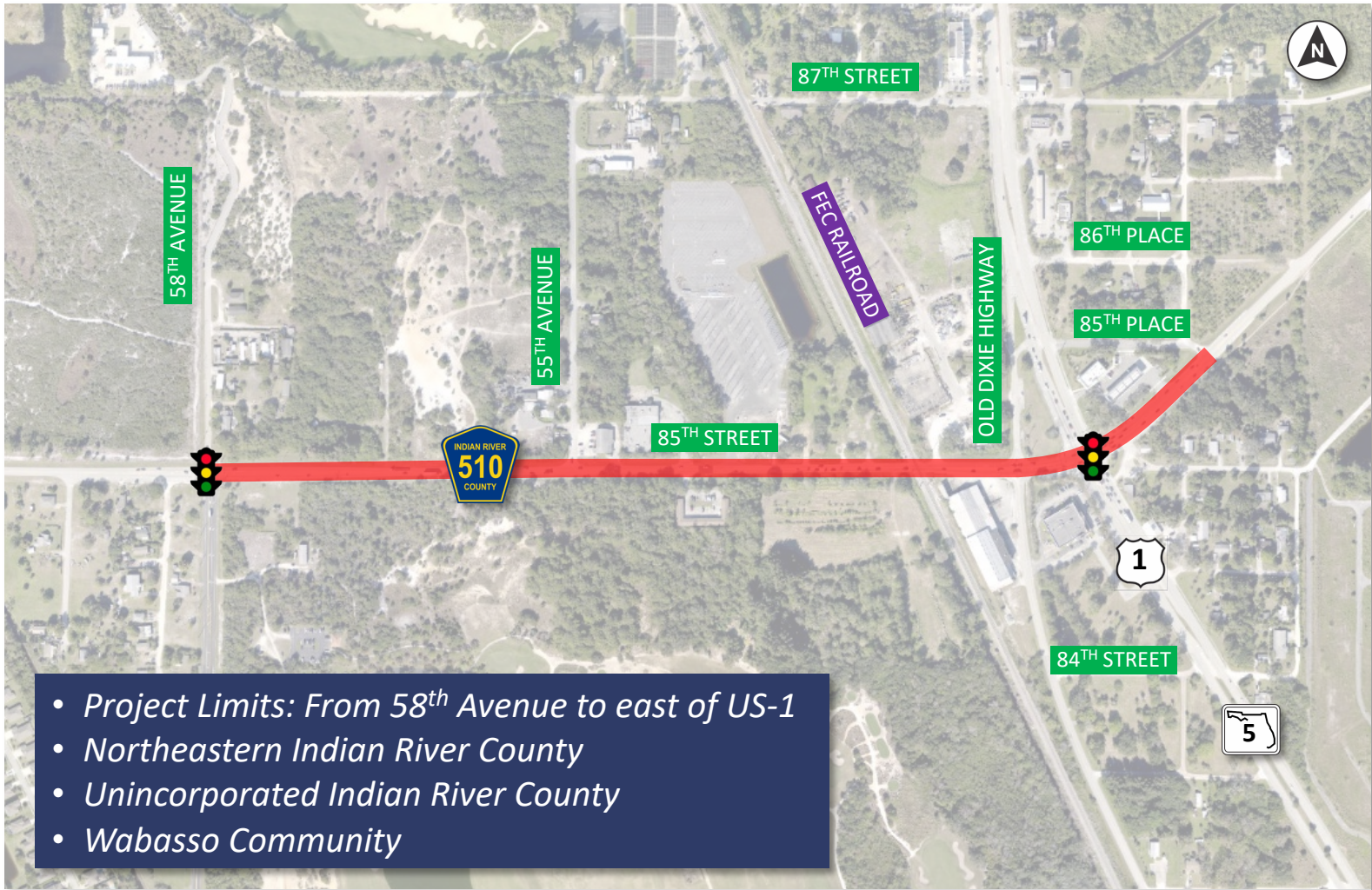
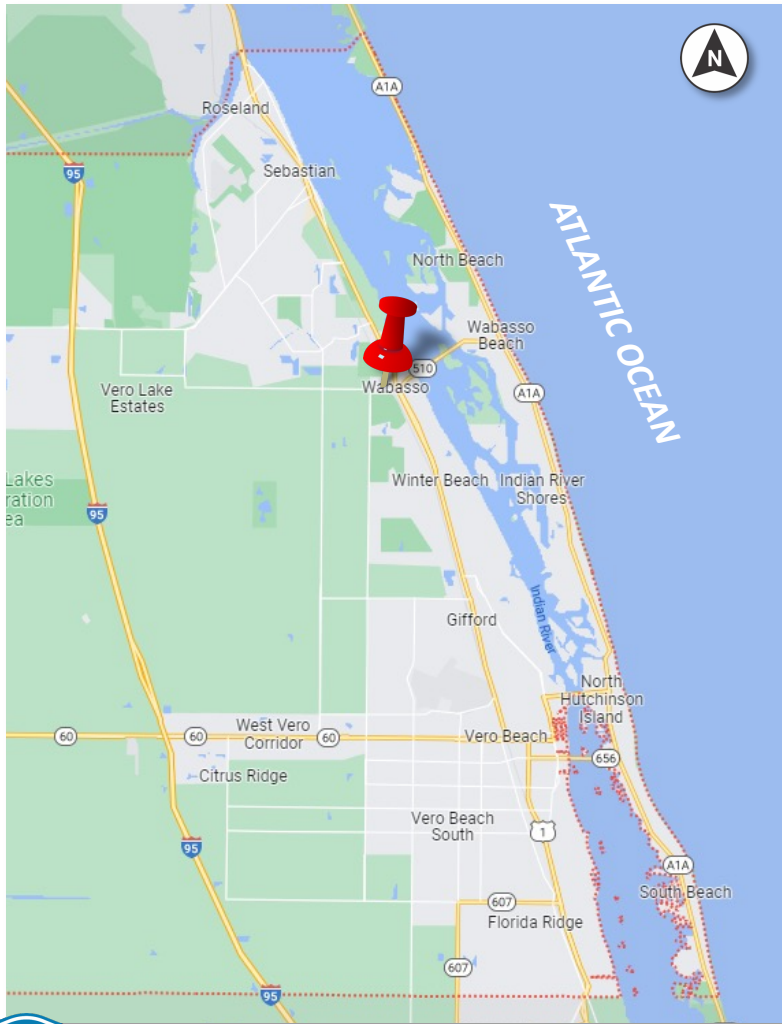
Why it's done:

- Evaluate project feasibility and potential environmental impacts (natural, physical, social, cultural)
- Comply with federal and state environmental laws
- Required to secure federal regulatory approval

What it involves:

- Conducting preliminary engineering
- Evaluating options to avoid, minimize or mitigate potential environmental impacts
- Coordinating with federal, state, and local agencies
- Engaging the public in project development
- Select a preferred alternative for Final Design







PROJECT LOCATION



- *Project Limits: From 58th Avenue to east of US-1*
- *Northeastern Indian River County*
- *Unincorporated Indian River County*
- *Wabasso Community*



ADJACENT PROJECTS

- 405606-2 – CR 510 PD&E Study 
From CR 512 to 58th Avenue
(Completed in April 2019)
- 405606-5 – Segment 5 
From West of 82nd Avenue to Powerline Road
(Under Design – Awaiting Construction Funds)
- 405606-6 – Segment 6 
From Powerline Road to 58th Avenue
(Under Design – Awaiting Construction Funds)
- 405606-7 – Segment 7 
From CR 512 to 87th Street
(Under Design – Scheduled for construction FY 24/25)
- 405606-8 – Segment 8 
From 87th Street to West of 82nd Avenue
(Under Design – Awaiting Construction Funds)
- 431724-3 – SR 5/US-1 
From 69th Street to CR 510
(Under Design – Awaiting Construction Funds)



PROJECT PURPOSE

- Improve capacity for local and regional travel, freight movement, and emergency evacuation.
- Reduce accidents and improve safety issues for vehicles, bicycles, and pedestrians.

PROJECT NEED

- Capacity: Population growth and new developments in the study area will increase traffic, creating more congestion and delays.
- Transportation Demand: Increase in traffic flow along this segment of CR 510. The CR 510 and US-1 intersection is one of the busiest in the County and has attracted developments such as the Orchid Quay (formerly Bristol Bay).
- Social Demand/Economic Development: Additional residential developments east and west of the project corridor.
- Modal Relationship: Improve the mobility for all users (bicyclists, pedestrians, freight, vehicles, and trains). The CR 510 corridor provides limited options for pedestrians and bicyclists. The need for bicycle lanes and sidewalks was identified in the Indian River County Bicycle and Pedestrian Master Plan 2015.
- System Linkage: Major Evacuation Route for the Region.

PURPOSE & NEED



This project has been identified in the Indian River County MPO's Needs Projects List and Cost Feasible Plan

EXISTING CONDITIONS

ROADWAY CHARACTERISTICS	
Number of Lanes	Two (One in each direction)
Lane width	12-ft
Posted Speed	40 MPH
Sidewalks	<ul style="list-style-type: none"> • None between 58th Avenue and FEC Railway • 6-ft sidewalks between FEC Railway and US-1
Bicycle Facilities	None
Existing Right-of-Way	Varies 80-ft to 130-ft



CR 510 looking east

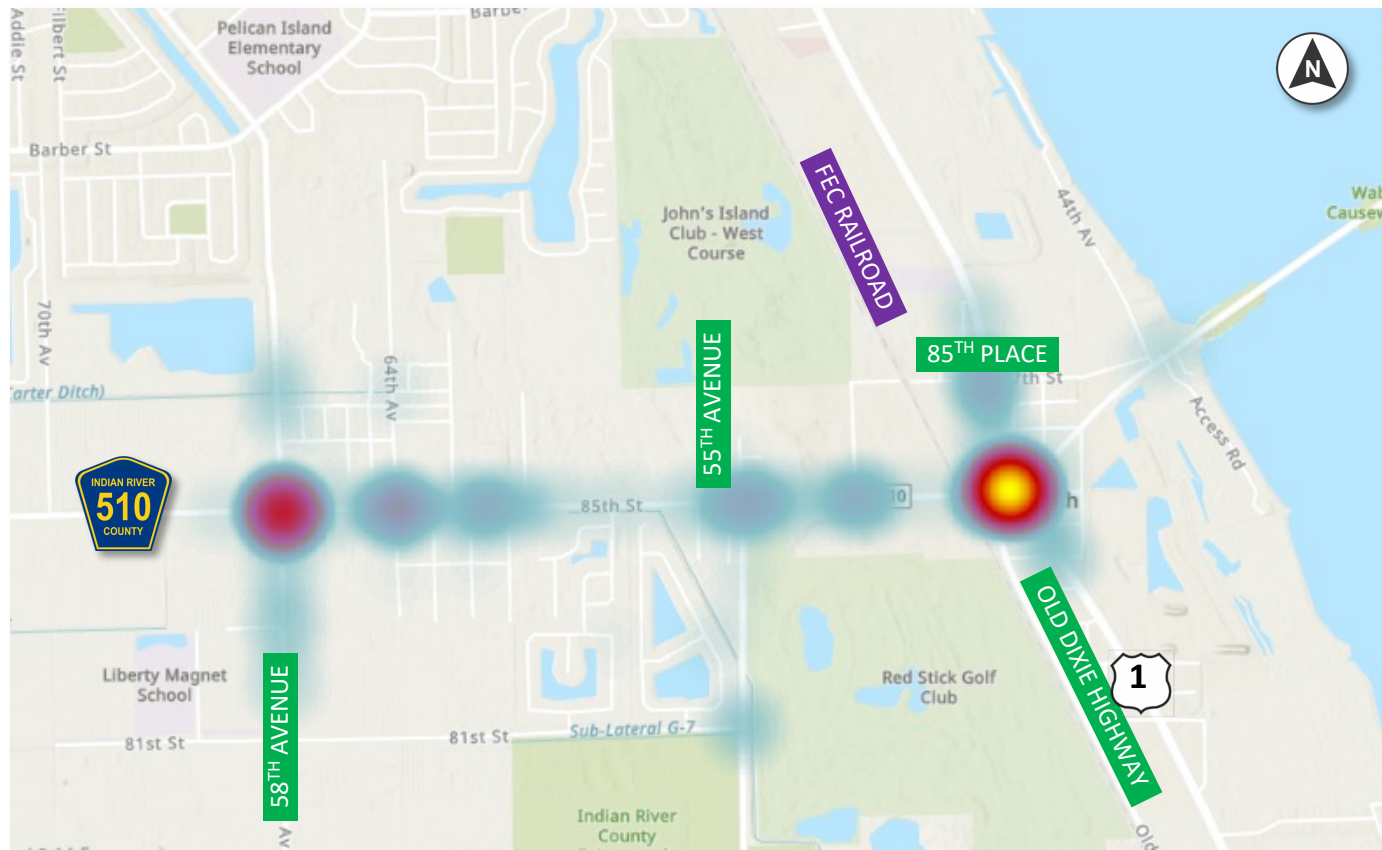
EXISTING SAFETY CONDITIONS

Five years of crash data: 2017-2021

- 336 crashes in total
- 109 injuries (10 serious)
- 5 fatalities
- 1 bicycle
- 0 pedestrian

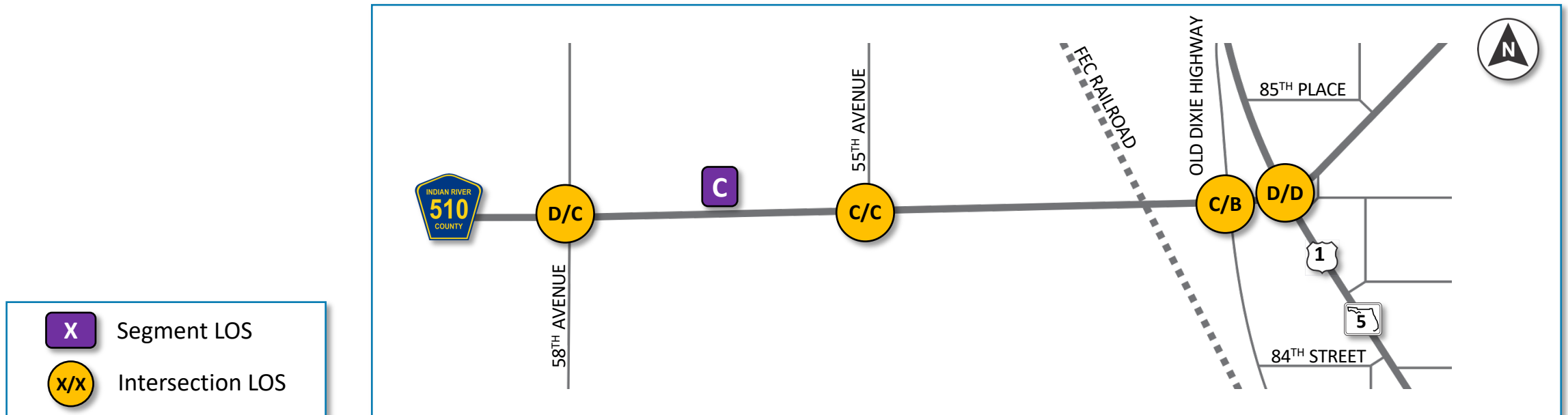
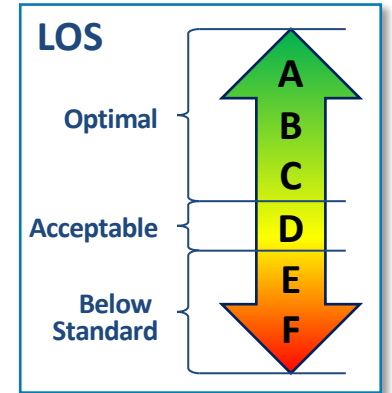
Predominant Crash Type:

- Rear-end: 48%
- Off-Road: 3%
- Head-On: 2%



EXISTING TRAFFIC OPERATIONS (Existing Year 2021)

- Existing LOS C – Year 2021
- Future No Build LOS F – Year 2045
- Increase traffic due to projected population growth
- Average truck percentage 7% (observed high truck factors of 20%)



ALTERNATIVES EVALUATION

- Roadway Alternatives
 - Widening CR 510 from two to four lanes
 - Evaluate the addition of multimodal features (sidewalks, bicycle lanes, and multi-use paths)

- Intersection Improvements
 - CR 510 at US-1
 - CR 510 at 58th Avenue

- FEC Railway crossing evaluations
 - At grade-crossing
 - Grade separation over FEC



ENVIRONMENTAL ANALYSIS



Social Effects

- Land Use Changes
- Social
- Relocation Potential
- Farmlands
- Aesthetic Effect
- Economic
- Mobility

Natural Resources

- Wetlands
- Aquatic Preserves
- Water Quality and Quantity
- Wild and Scenic Rivers
- Floodplains
- Protected Species and Habitat
- Essential Fish Habitat

Cultural Resources

- Historic Sites/Districts
- Archeological Sites
- Recreation Areas
- Section 4(f) Potential

Physical Effects

- Traffic Noise
- Air Quality
- Contamination
- Infrastructure

PUBLIC INVOLVEMENT

- Public Meetings:
 - Public Kick-off Meeting:
 - *January 26, 2023 (Virtual)*
 - *January 31, 2023 (In-Person)*
 - Alternatives Public Workshop:
 - *Summer 2023 (Tentative)*
 - Public Hearing:
 - *Spring 2024 (Tentative)*

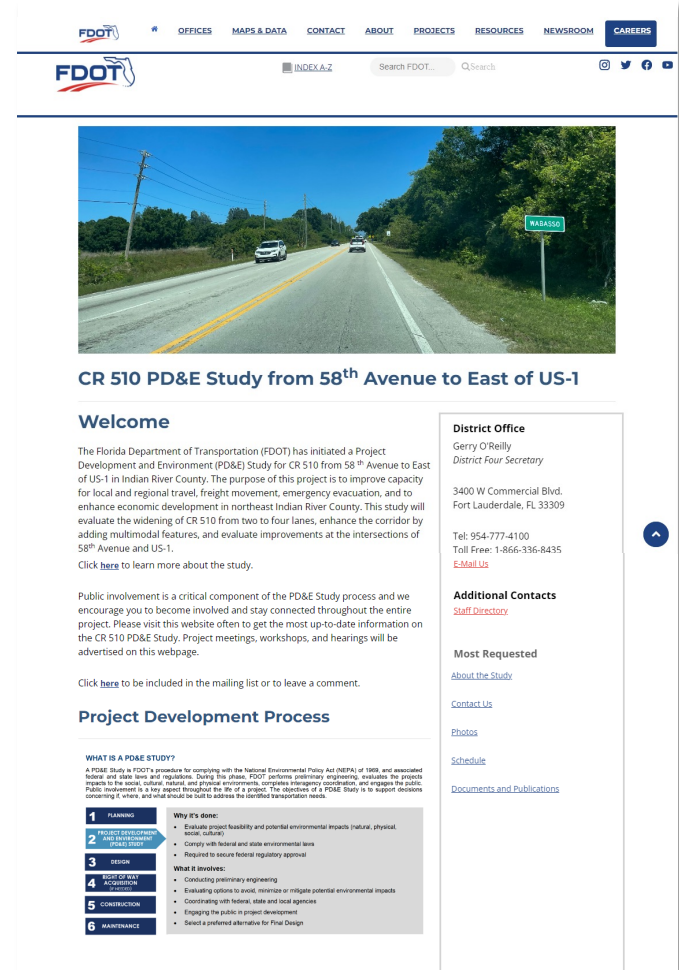
- Submit Comments to:
 - Maria Formoso, PE
 - E-mail: maria.formoso@dot.state.fl.us
 - Project Website: <https://www.fdot.gov/projects/cr510-58ave-us1>

Public comments and questions are welcomed at any time throughout the study.

Social Media



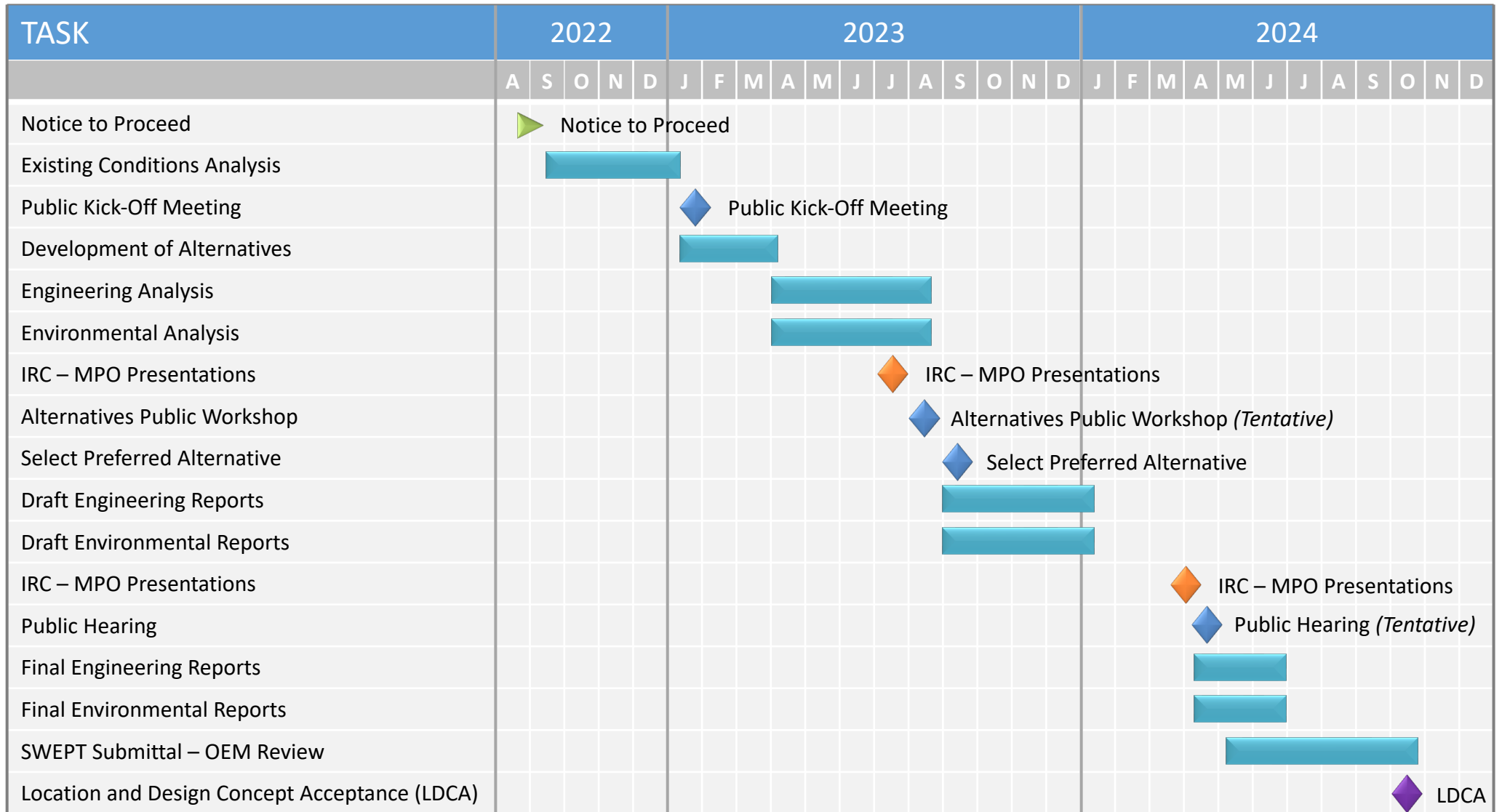
Facebook: MyFDOTSEFL
 Instagram: myfdot_sefl
 Twitter: @MyFDOT_SEFL



GET INVOLVED! STAY INFORMED!



PROJECT SCHEDULE



QUESTIONS : ANSWERS

SUBMITTING COMMENTS AND QUESTIONS TODAY



Ways to submit your comments:

1. Online using the GoToWebinar by typing your comment/question in the Question Box
2. Verbally by using the “Raise Hand” feature on your control panel to be unmuted
3. Online at project website
4. By phone or email to Project Manager
5. By U.S. mail to Project Manager

Project Website:

<https://www.fdot.gov/projects/cr510-58ave-us1>

Project Manager Contact Information:

Maria Formoso, P.E.
 FDOT District Four
 3400 West Commercial Boulevard
 Fort Lauderdale, FL 33309

Email: maria.Formoso@dot.state.fl.us
 Telephone: 954-777-4677
 Toll-Free: 866-336-8435, Ext. 4677

ABOUT YOUR COMMENTS AND QUESTIONS



All comments and questions are part of the **Public Record.**



Please submit your comments and questions



All registrants will receive a link to the **meeting recording.**

QUESTIONS : ANSWERS

Thank You For Participating!

Project Website:

<https://www.fdot.gov/projects/cr510-58ave-us1>

Project Manager Contact Information:

Maria Formoso, P.E.
 FDOT District Four
 3400 West Commercial Boulevard
 Fort Lauderdale, FL 33309

Email: maria.Formoso@dot.state.fl.us
 Telephone: 954-777-4677
 Toll-Free: 866-336-8435, Ext. 4677

Please submit
 comments or questions



*Thank you
for attending the
Public Kick-Off Meeting
for the
CR 510 PD&E Study*



MOVE OVER
or slow down for emergency lights.

#MoveOverFL