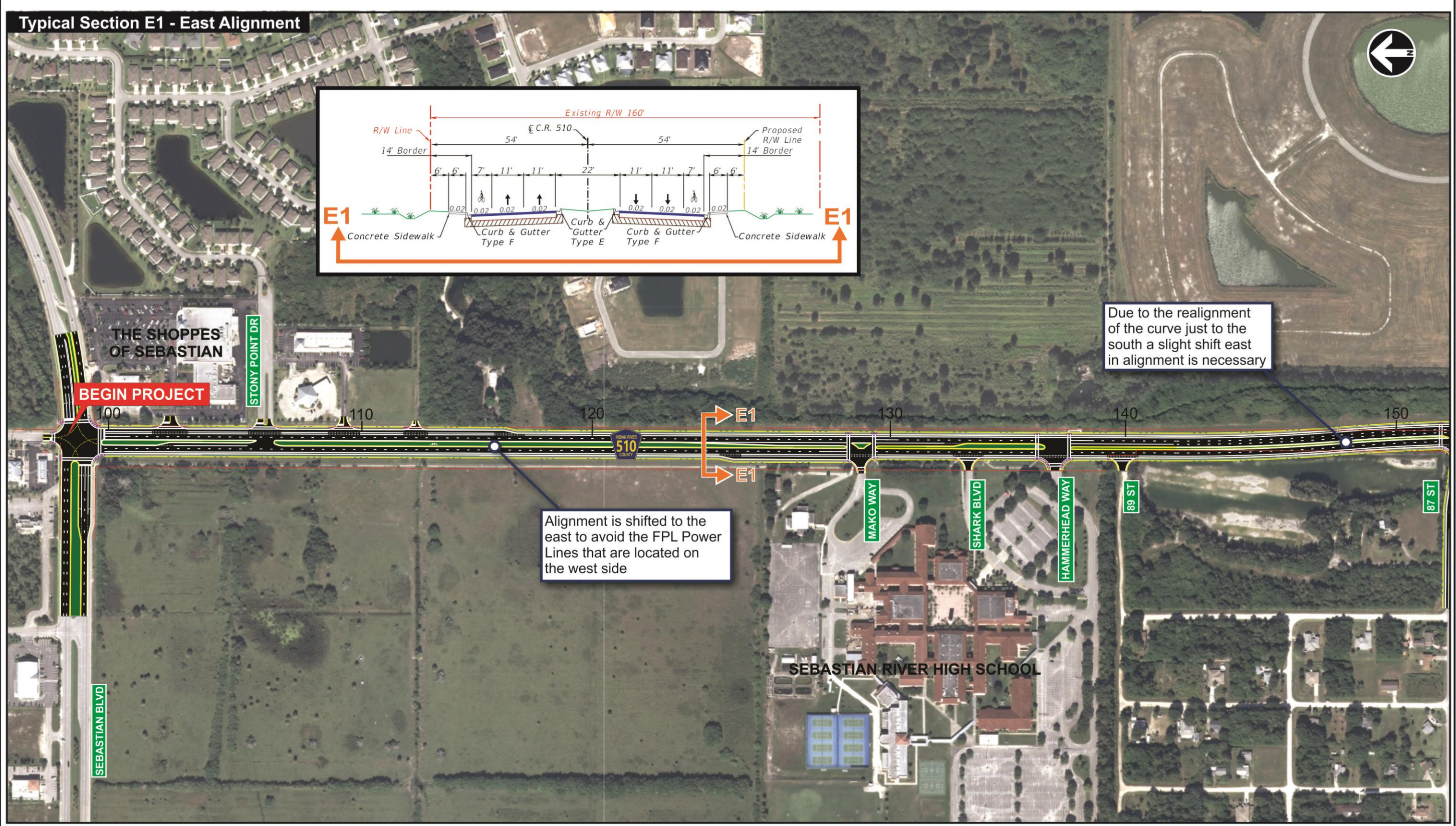
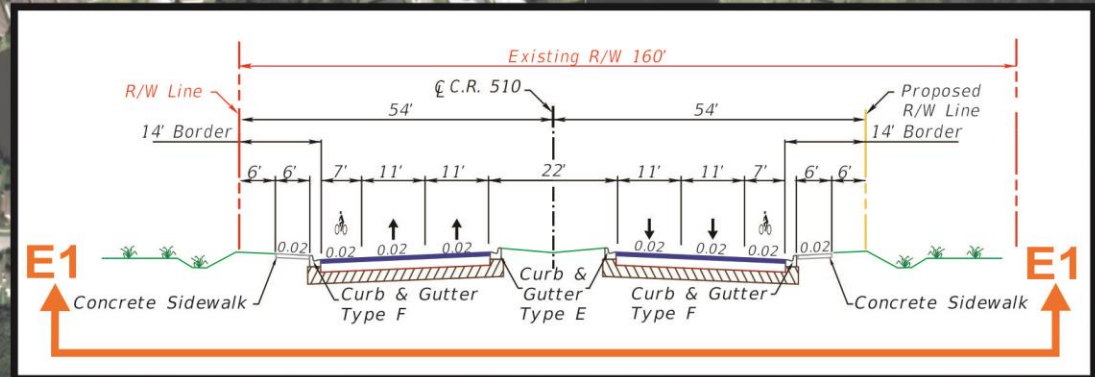


Typical Section E1 - East Alignment



Due to the realignment of the curve just to the south a slight shift east in alignment is necessary

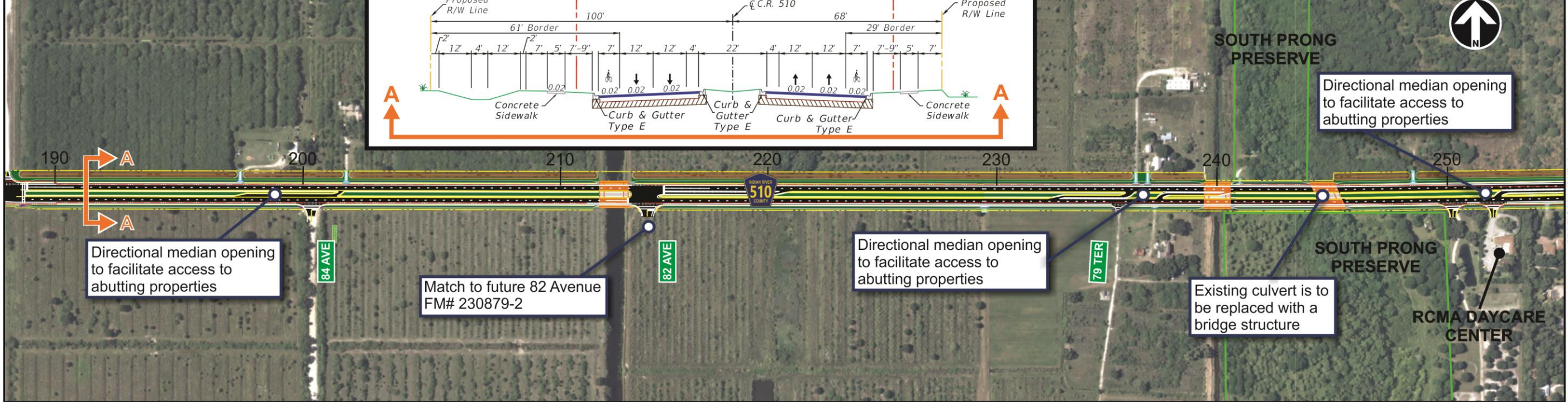
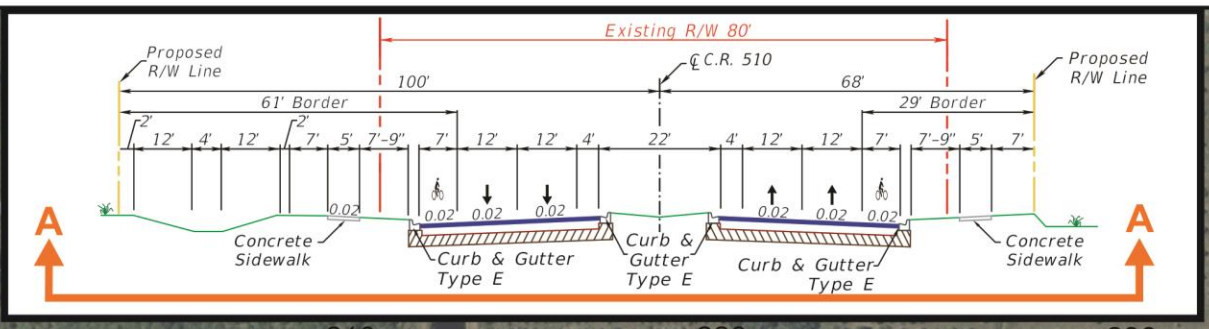
Alignment is shifted to the east to avoid the FPL Power Lines that are located on the west side

Recommended Alternative - Segment 1

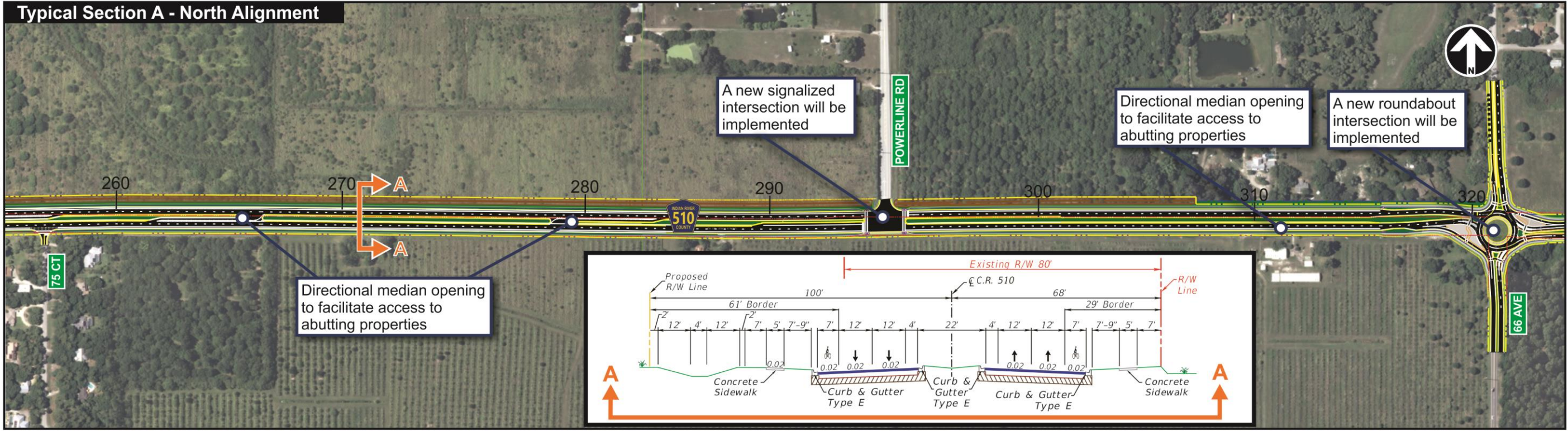
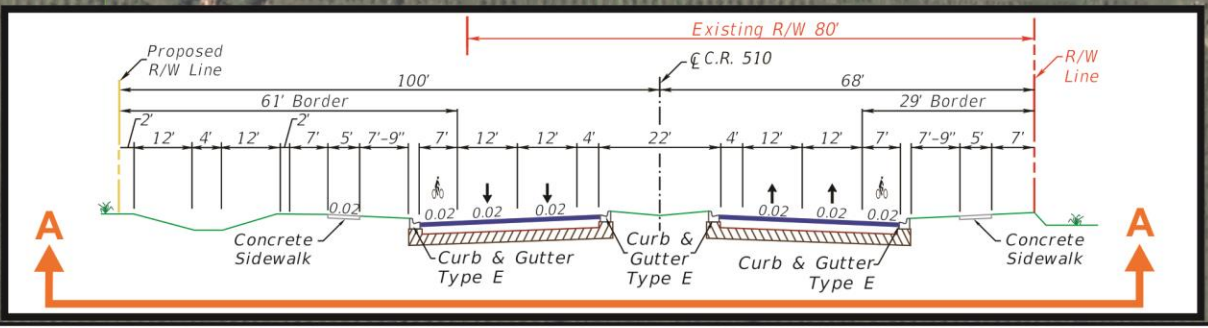
Figure 6-2



**Typical Section A - Center Alignment**

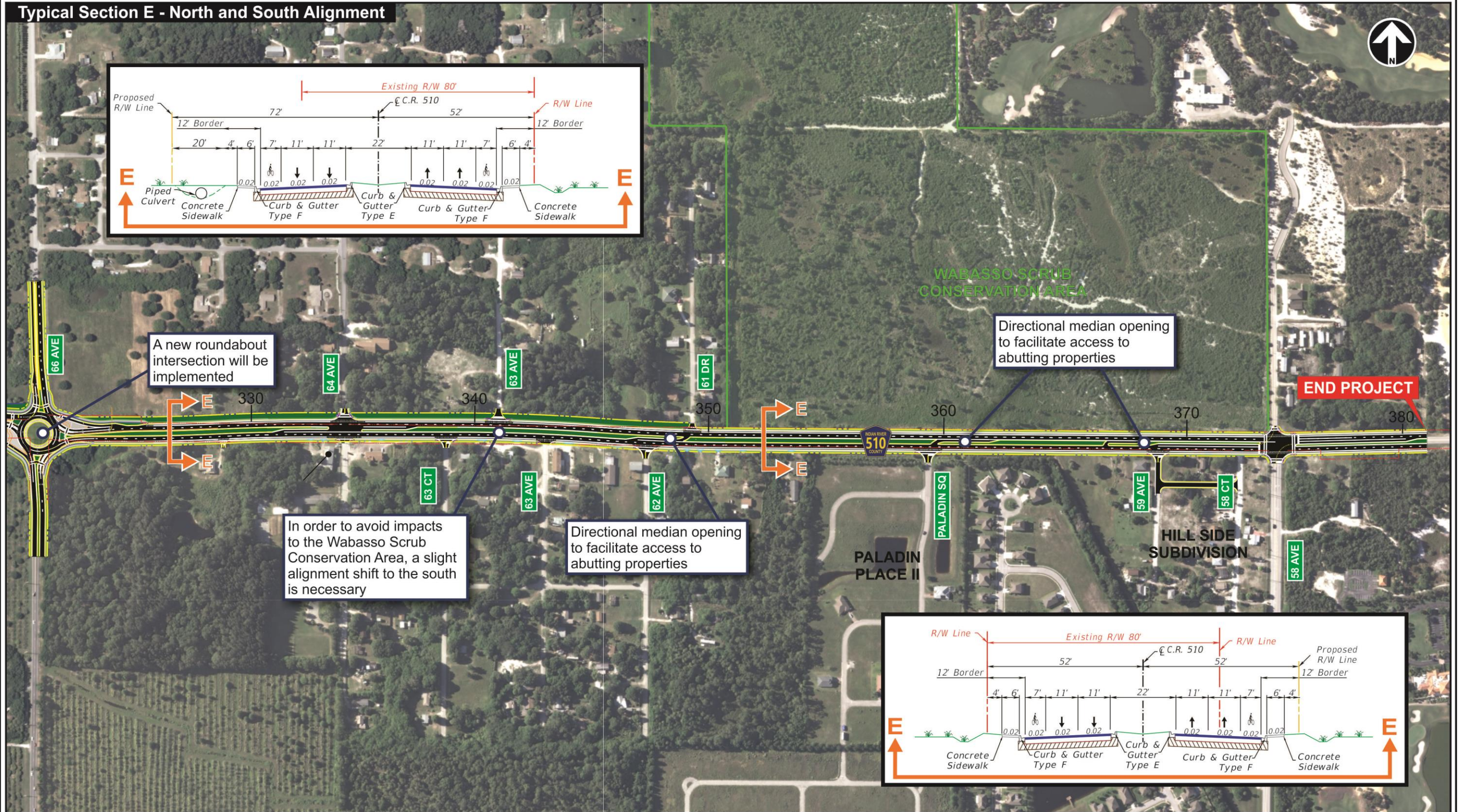


**Typical Section A - North Alignment**



Recommended Alternative - Segment 3 Figure 6-4

Typical Section E - North and South Alignment



Recommended Alternative - Segment 4

Figure 6-5