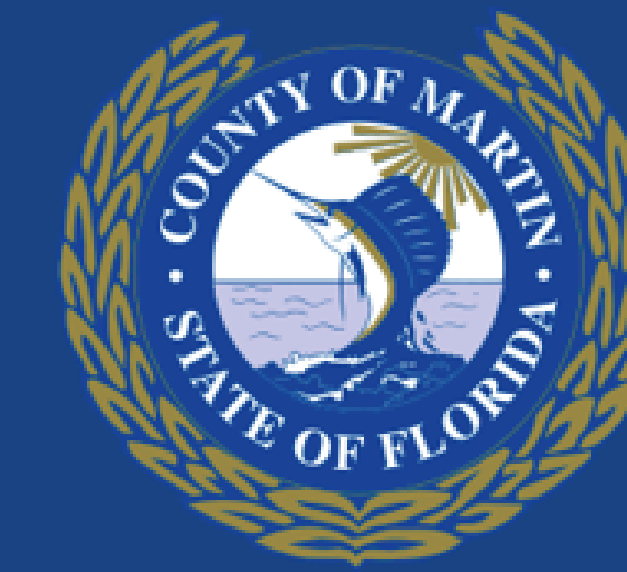


COVE ROAD

From State Road (SR) 76/Kanner Highway
to SR 5/US-1
Martin County, Florida

Project Development & Environment (PD&E) Study
FPID Number: 441700-1 ETDM Number: 14479



WELCOME

Florida Department of Transportation

Public Kick-Off Meeting





NON-DISCRIMINATION POLICY

Title VI Compliance

Public participation is solicited without regard to race, color, national origin, age, sex, religion, disability, or family status. Persons wishing to express concerns relative to FDOT compliance with Title VI may do so by contacting:

Sharon Singh-Hagyan
District Four Title VI Coordinator
3400 West Commercial Boulevard
Fort Lauderdale, FL 33309
(954) 777-4190
(866) 336-8435, Ext. 4190 (Toll Free)
sharon.singhhagyan@dot.state.fl.us

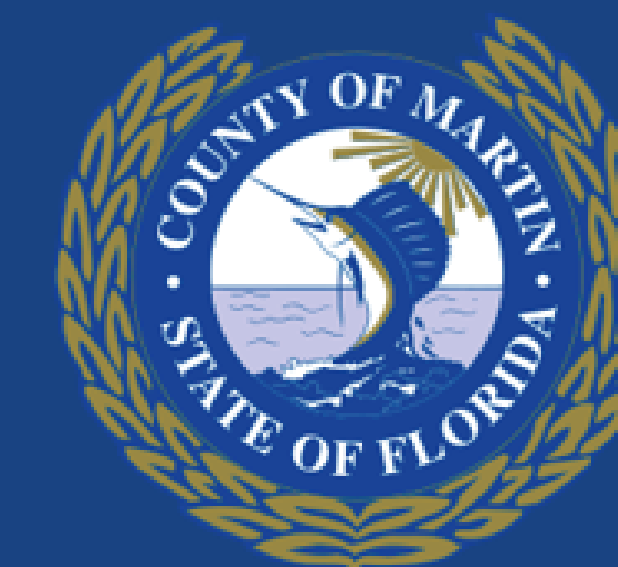
Stefan Kulakowski, FCCM, CPM
Statewide Title VI Coordinator
605 Suwannee Street, MS 65
Tallahassee, FL 32399
(850) 414-4742
(866) 374-3368, Ext. 4742 (Toll Free)
stefan.kulakowski@dot.state.fl.us

COVE ROAD

From State Road (SR) 76/Kanner Highway
to SR 5/US-1
Martin County, Florida

Project Development & Environment (PD&E) Study

FPID Number: 441700-1 ETDM Number: 14479



FEDERAL-STATE PARTNERSHIP

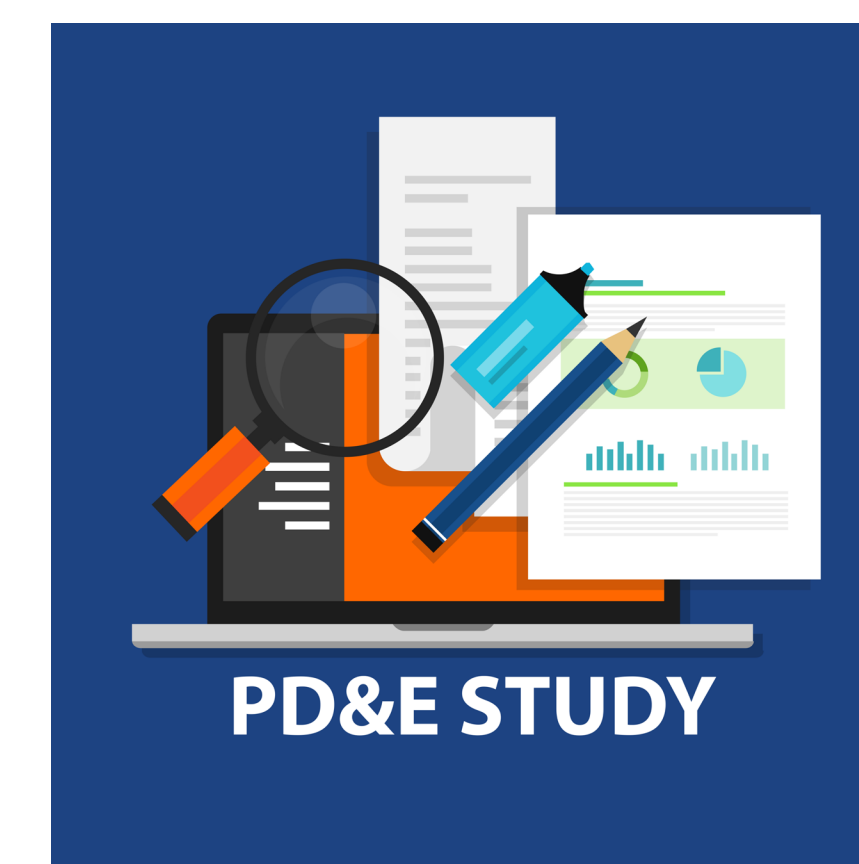
The environmental review, consultation and other actions required by applicable federal environmental laws for this project are being, or have been, carried out by the FDOT pursuant to 23 United States Code (U.S.C.) 327 and a Memorandum of Understanding dated May 26, 2022, and executed by the Federal Highway Administration and FDOT.

TRANSPORTATION DEVELOPMENT PROCESS



✓ Martin Metropolitan Planning Organization (MPO) requested FDOT to fund and lead the Cove Road Widening Project

- ✓ Alternatives Development
- ✓ Engineering & Environmental Analysis
- ✓ Public/Agency Outreach
- ✓ Preferred Alternative/ Documentation



PD&E STUDY

What is a PD&E Study?

The Project Development and Environment (PD&E) Study is a process developed by FDOT to evaluate the social, environmental and engineering impacts associated with a proposed transportation improvement.

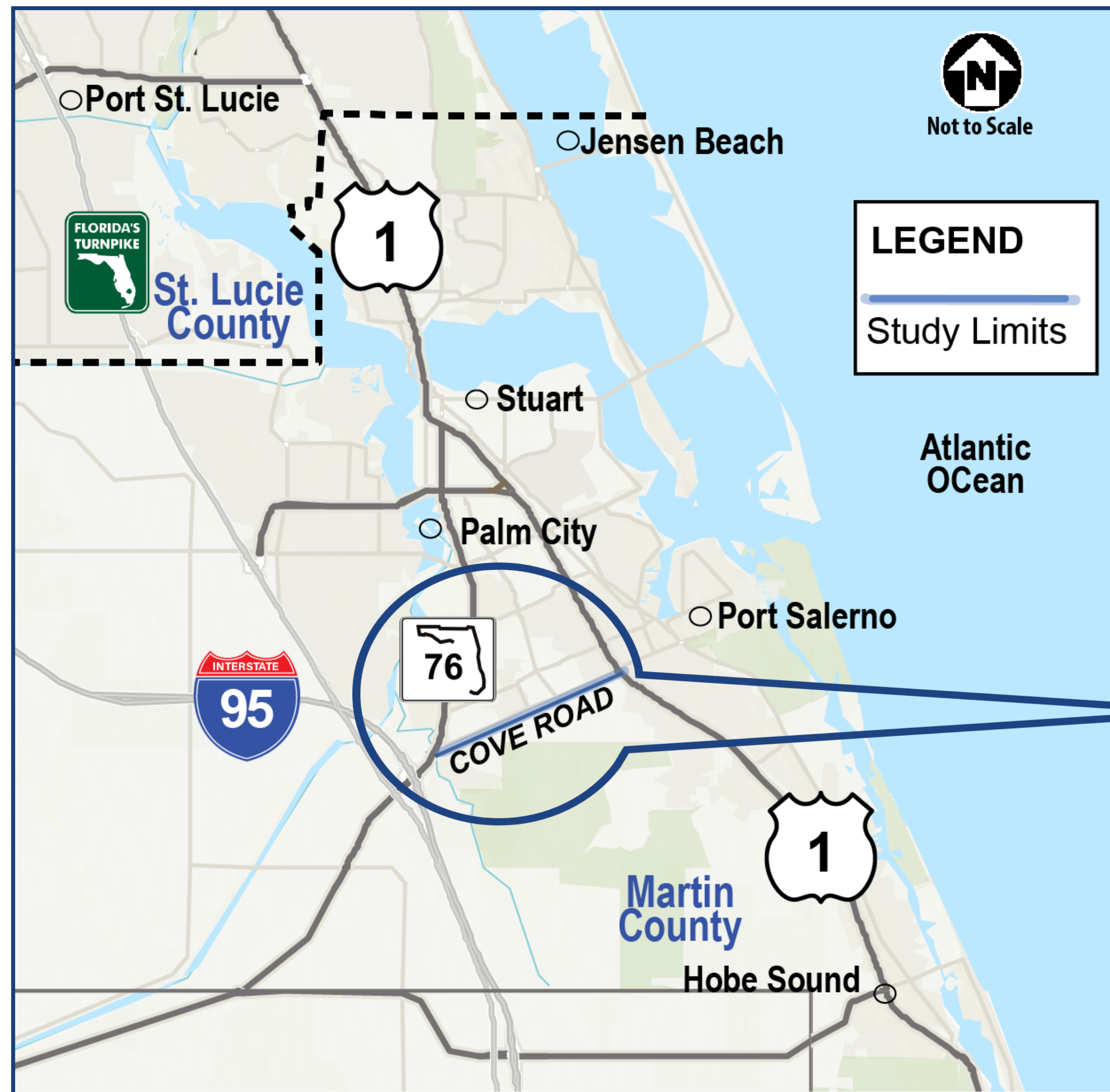
COVE ROAD

From State Road (SR) 76/Kanner Highway to SR 5/US-1
Martin County, Florida

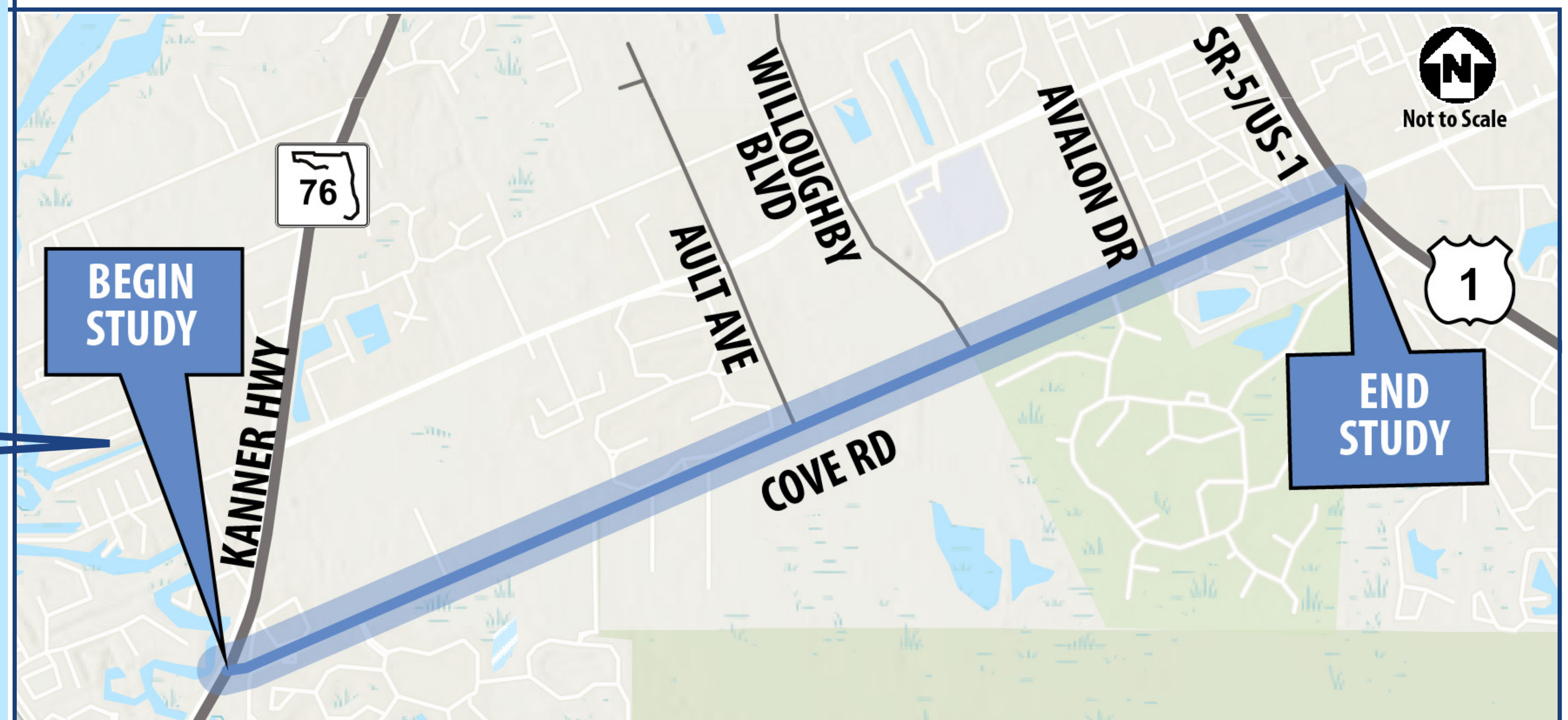
Project Development & Environment (PD&E) Study
FPID Number: 441700-1 ETDM Number: 14479



PROJECT LOCATION



- From Kanner Highway to US-1 
- Project extends approximately 3.2 miles 



PURPOSE & NEED

Project Purpose



The primary purpose of widening Cove Road from two lanes to four lanes is to add capacity for all modes of travel and improve the local transportation network.

Project Needs

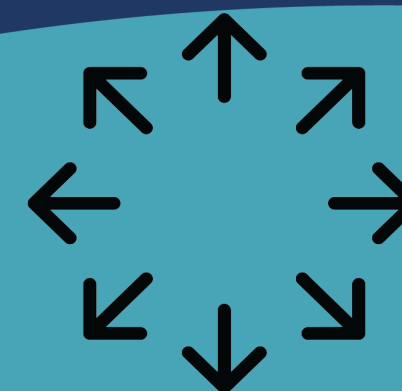
Support
Economic &
Social Demands



Improve
System
Linkage



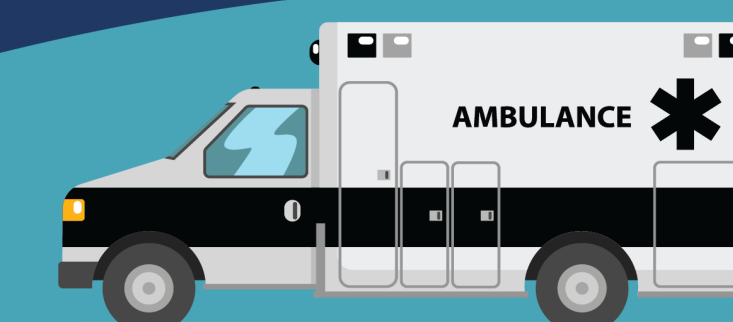
Improve
Capacity

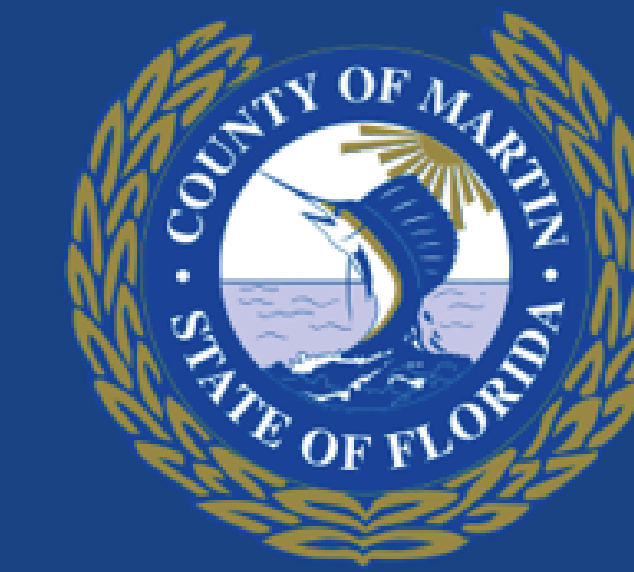


Improve
Modal
Interrelationships

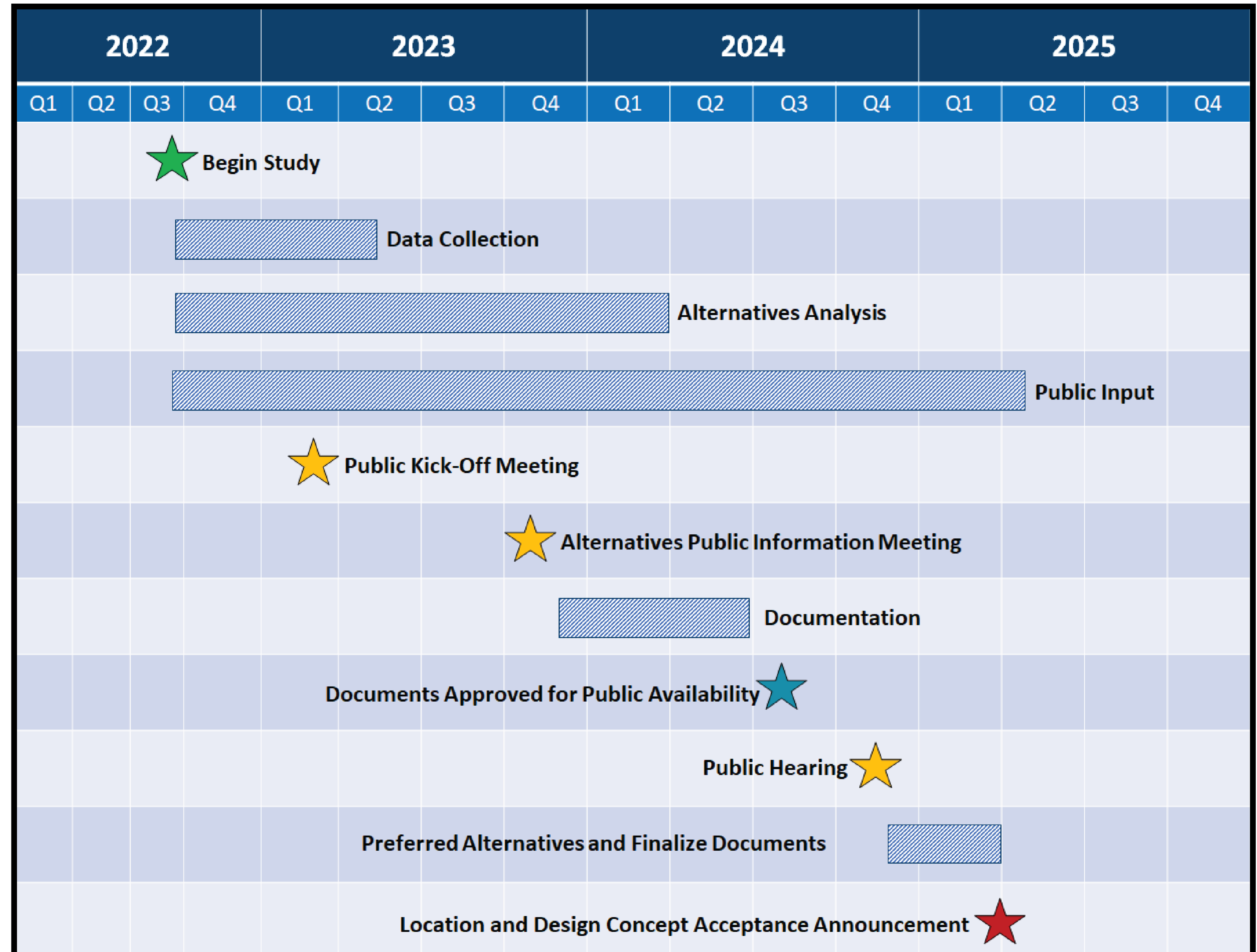


Improve
Emergency
Evacuation





PROJECT SCHEDULE



• *Design funded in fiscal year 2025*

• *Right-of-way and construction are not currently funded.*

**Tentative, subject to change*

COVE ROAD

From State Road (SR) 76/Kanner Highway
to SR 5/US-1
Martin County, Florida

Project Development & Environment (PD&E) Study
FPID Number: 441700-1 ETDM Number: 14479



CONTACT INFORMATION

Vanita Saini, P.E.

Florida Department of Transportation (FDOT) Project Manager

FDOT District Four

3400 West Commercial Boulevard
Fort Lauderdale, FL 33309

Email: vanita.saini@dot.state.fl.us

Telephone: (954) 777-4468

Toll-Free: (866) 336-8435, Ext. 4468

www.CoveRoadStudy.com

ENVIRONMENTAL EVALUATION



SOCIAL & ECONOMIC

- Land Use Changes
- Social
- Relocation Potential
- Aesthetic Effect
- Economic
- Mobility

CULTURAL RESOURCES

- Historic and Archaeological Sites
- Recreational Areas

NATURAL RESOURCES

- Wetlands and Other Surface Waters
- Threatened and Endangered Species
- Water Quality & Quantity

PHYSICAL ENVIRONMENT

- Noise
- Air Quality
- Contamination

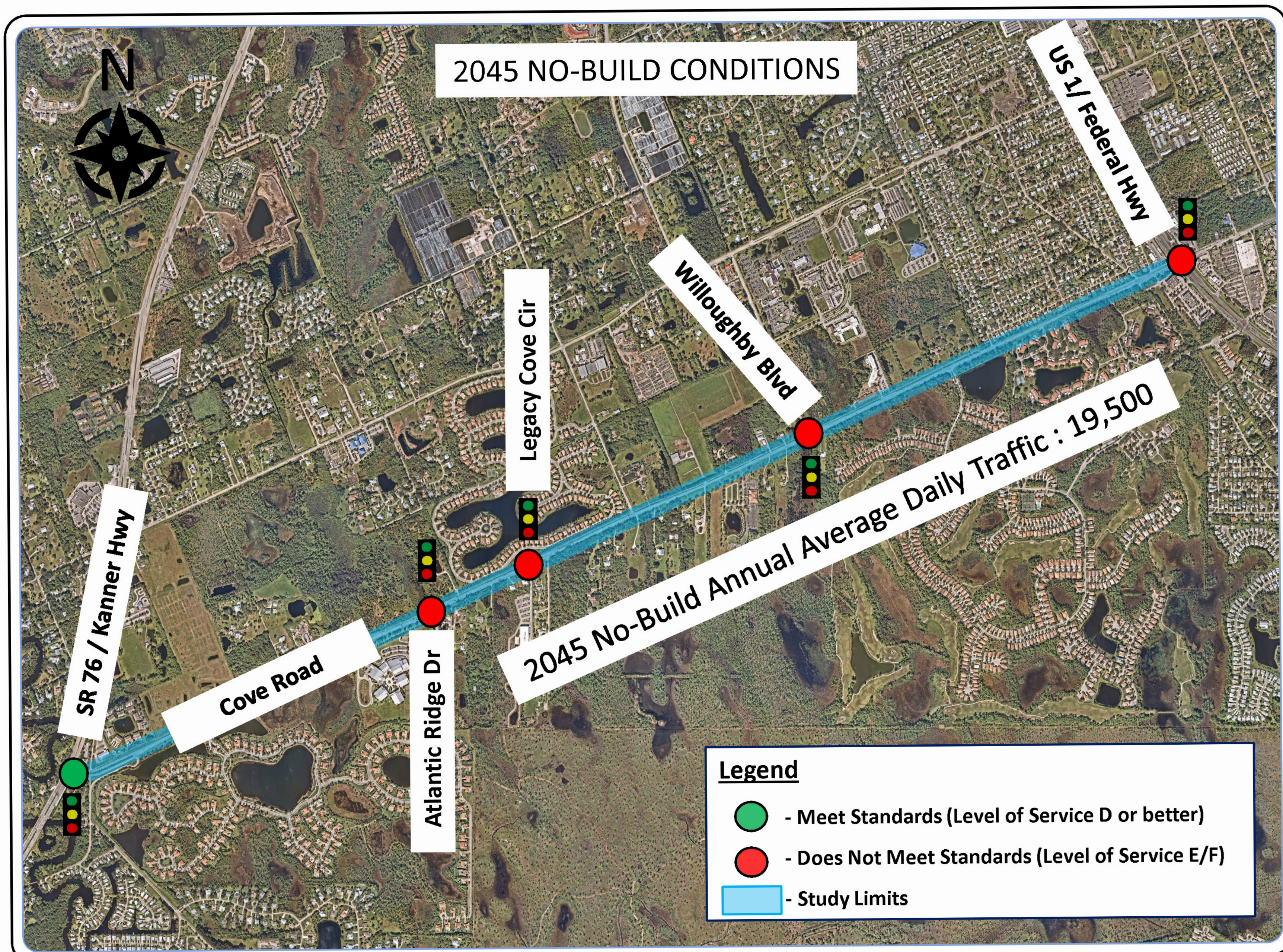
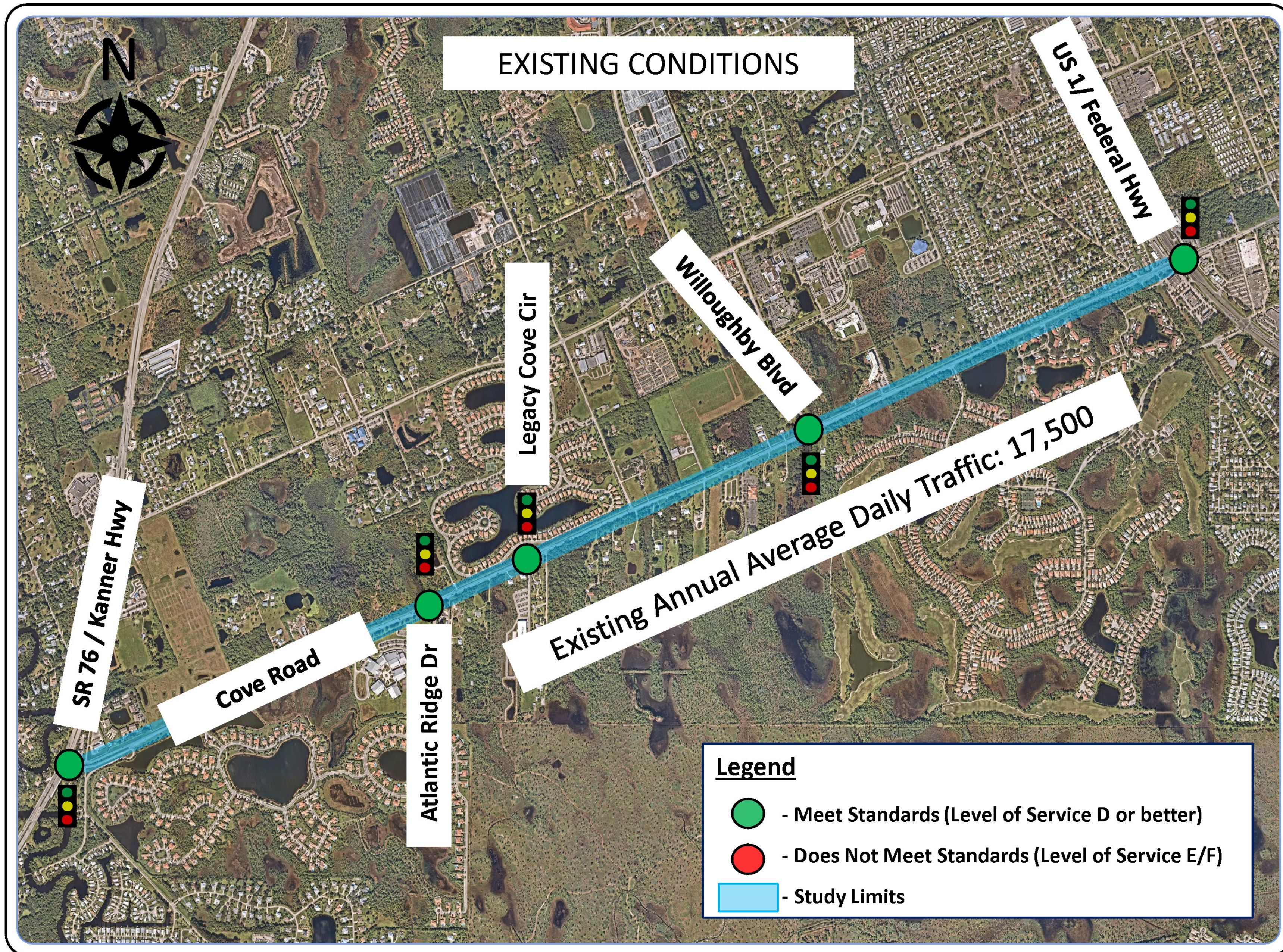
COVE ROAD

From State Road (SR) 76/Kanner Highway
to SR 5/US-1
Martin County, Florida

Project Development & Environment (PD&E) Study
FPID Number: 441700-1 ETDM Number: 14479



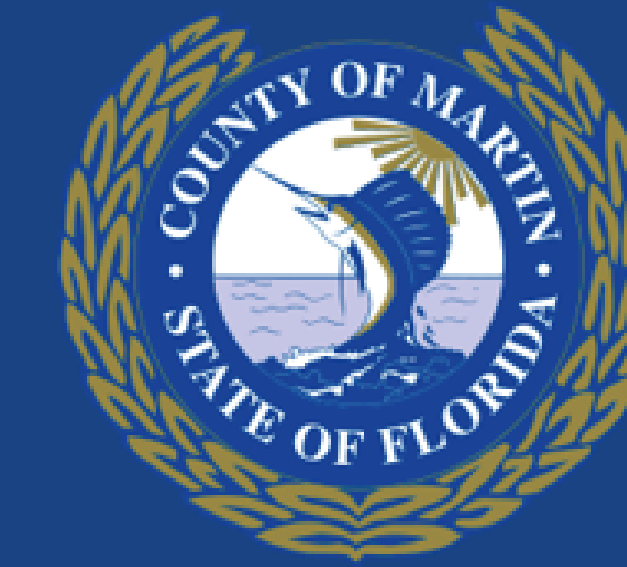
TRAFFIC



COVE ROAD

From State Road (SR) 76/Kanner Highway
to SR 5/US-1
Martin County, Florida

Project Development & Environment (PD&E) Study
FPID Number: 441700-1 ETDM Number: 14479



THANK YOU
FOR ATTENDING!