



Florida Department of Transportation

RON DESANTIS
GOVERNOR

Florida's Turnpike Enterprise
P.O. Box 613069, Ocoee, FL 34761
407-532-3999

KEVIN J. THIBAUT, P.E.
SECRETARY

ADDENDUM NO. 2

DATE: July 08, 2021

TO: PROSPECTIVE PROPOSERS

FROM: *R M* Richard M. Nethercote, Jr.
District Contracts Administrator
Florida's Turnpike Enterprise

SUBJECT: **CONTRACT NO.:** E8S83
FINANCIAL PROJECT NO.: 434461-1-7B-06,07,08,09,10,11,12
COUNTIES: Broward, Miami-Dade, St. Lucie, Martin, Palm Beach
PROJECT NAME: Performance-Based Facilities Maintenance

PROPOSALS TO BE RECEIVED: July 15, 2021 at 5:00 P.M Local Time

Proposers and other interested parties are informed that the above referenced documents are hereby revised, changed and supplemented as set forth below:

REQUEST FOR PROPOSAL (RFP)

- Section 14.1.1, of the Request for Proposal (page 8), first sentence of the fourth paragraph, the word "five (5)" is deleted and replaced "seven (7)".
- Section 15.2.1, of the Request for Proposal (page 10), first sentence of the first paragraph, the word "eight (8)" is deleted and replaced "seven (7)".

SCOPE OF SERVICES

- Section 6.9, of the Scope of Services, page 37 is deleted and replaced new page 37.

PROJECT ELECTRONIC FILES

- Remove the whole "Facilities Mowing Inventory – HEFT" folder and replace with new "REVISED Facilities Mowing Inventory – HEFT" folder.
- Remove "MM 3.5X: COUNTYLINE TOLL" sheet and replace with new "REVISED MM 3.5X: COUNTYLINE TOLL" sheet, of the "Facilities Mowing Inventory – Mainline" folder (page 4 of 31).
- Remove "Mainline MM 58: Sunrise Blvd" sheet and replace with new "REVISED Mainline MM 58: Sunrise Blvd" sheet, of the "Facilities Mowing Inventory – Mainline" folder (page 8 of 31).

- Remove “Mainline MM 65: Pompano Beach Service Plaza” sheet and replace with new “REVISED Mainline MM 65: Pompano Operations Center” sheet, of the “Facilities Mowing Inventory – Mainline” folder (page 10 of 31).

All other information remains unchanged.

ALL PROPOSAL HOLDERS must acknowledge receipt of this Addendum on the Proposal OF Form (Form #375-020-56) in the space provided. Failure to acknowledge receipt of this Addendum may cause your bid to be deemed non-responsive.

If you have any questions regarding this information, please contact Rich Nethercote at the number shown above, ext. 3885.

Attachments

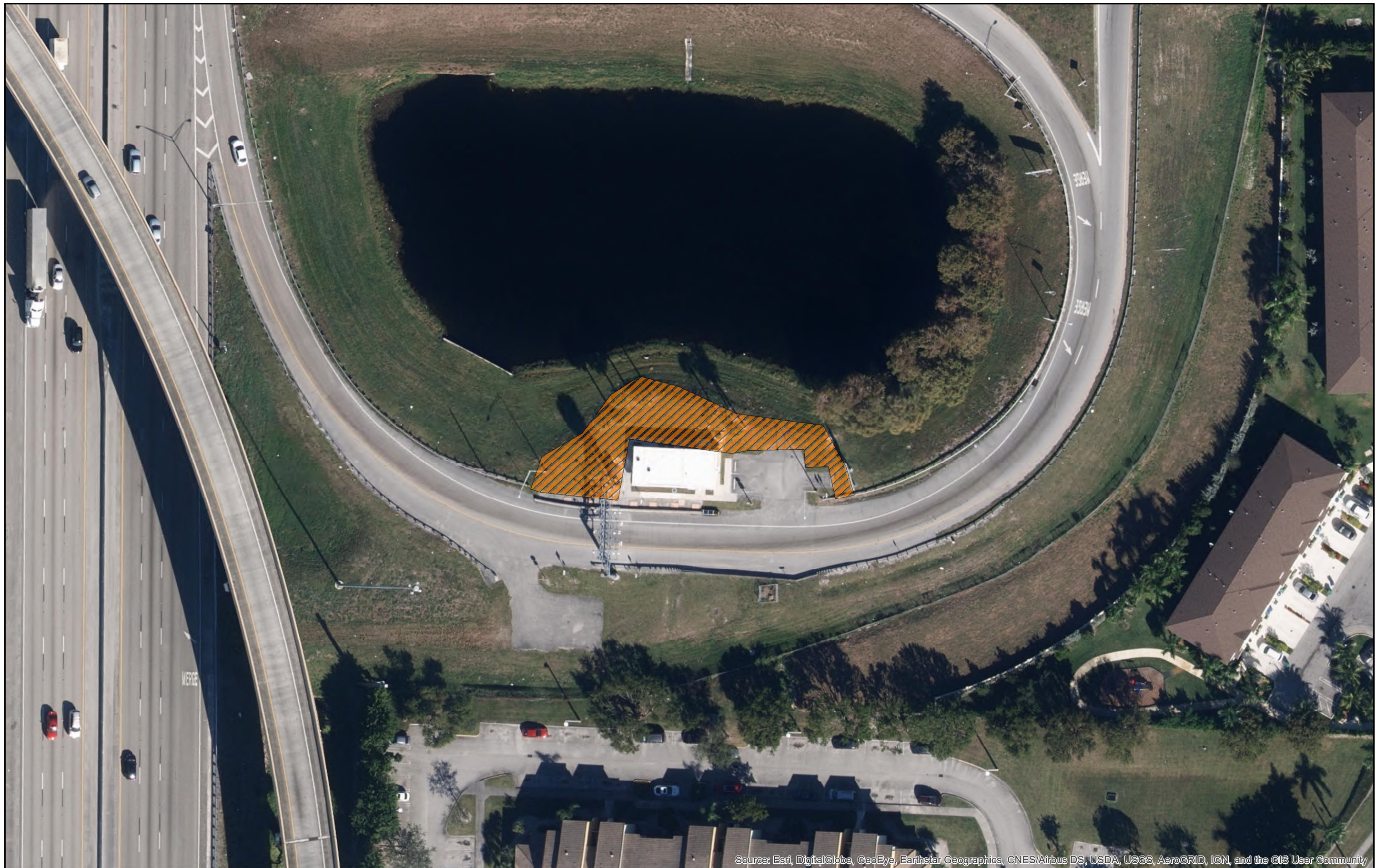
| Tolling Points | Road/Mile Post | Deductions |
|---|------------------------|-------------------------------------|
| Homestead Mainline | SR 821/10.0 | Multiply deductions by 2 |
| Bird Road Mainline NB/SB | SR 821/23.0 | Multiply deductions by 2 |
| Okeechobee Mainline NB/SB | SR 821/32.0 | Multiply deductions by 2 |
| Miramar Mainline NB/SB | SR 821/47.0 | Multiply deductions by 2 |
| Golden Glades Mainline | SR 91/0.0x | Multiply deductions by 2 |
| Pompano Mainline | SR 91/65.0 | Multiply deductions by 2 |
| Boca Tolls Data Center | SR 91/Exit 75.0 | Multiply deductions by 2 |
| *Lantana AET Mainline | SR 91/88.0 | Multiply deductions by 2 |
| *Lake Worth SB AET Mainline | SR 91/96.1 | Multiply deductions by 2 |
| *Jog Road SB AET Mainline | SR 91/98.5 | Multiply deductions by 2 |
| *Southern Blvd SB AET Mainline | SR 91/99.6 | Multiply deductions by 2 |
| *SR 710/Beeline SB AET Mainline | SR 91/108.4 | Multiply deductions by 2 |
| *PGA SB AET Mainline | SR 91/112.9 | Multiply deductions by 2 |
| *Jupiter SB AET Mainline | SR 91/132.6 | Multiply deductions by 2 |
| *Stuart NB AET Mainline | SR 91/137.6 | Multiply deductions by 2 |
| *Becker Road NB AET Mainline | SR 91/141.4 | Multiply deductions by 2 |
| *Port St. Lucie SB AET Mainline | SR 91/149.7 | Multiply deductions by 2 |
| *Ft. Pierce SB AET Mainline | SR 91/154.0 | Multiply deductions by 2 |
| Sunrise Sawgrass Mainline | SR 869/1.0 | Multiply deductions by 2 |
| Deerfield Sawgrass Mainline | SR 869/21.0 | Multiply deductions by 2 |
| Miami Gardens Express | I-75/5.0 | Multiply deductions by 2 |
| Miramar Express | I-75/7.0 | Multiply deductions by 2 |
| Pines Express | I-75/10.0 | Multiply deductions by 2 |
| Griffin Express | I-75/14.0 | Multiply deductions by 2 |
| NW 12 th Express | SR 826/7.0 | Multiply deductions by 2 |
| NW 58 th Express | SR 826/10.0 | Multiply deductions by 2 |
| NW 122nd Express | SR 826/14.0 | Multiply deductions by 2 |
| NW 138 th Express | SR 826/15.0 | Multiply deductions by 2 |
| **Miami Lakes Express | SR 826 (I-75)/2.0 | Multiply deductions by 2 |
| Sunrise Blvd. NB and SB Express | I-95/Exit 29 | Multiply deductions by 2 |
| Cypress Creek Rd SB Express (McNab Rd) | I-95/Exit 33 | Multiply deductions by 2 |
| Atlantic Blvd NB Express (SR 814) | I-95/Exit 36 | Multiply deductions by 2 |
| Sample Rd SB Express (Lighthouse Point) | I-95/Exit 39 | Multiply deductions by 2 |
| Camino Real Rd. SB Express | I-95/Exit 44 | Multiply deductions by 2 |
| Spanish River Blvd NB Express | I-95/46.5 | Multiply deductions by 2 |
| Yamato Rd. SB Express | I-95/Exit 48 | Multiply deductions by 2 |

* These toll equipment buildings are currently under construction and are scheduled to be completed in fall 2021. The project is expected to be completed in summer of 2024.

** This toll equipment building will be removed in the future construction project.

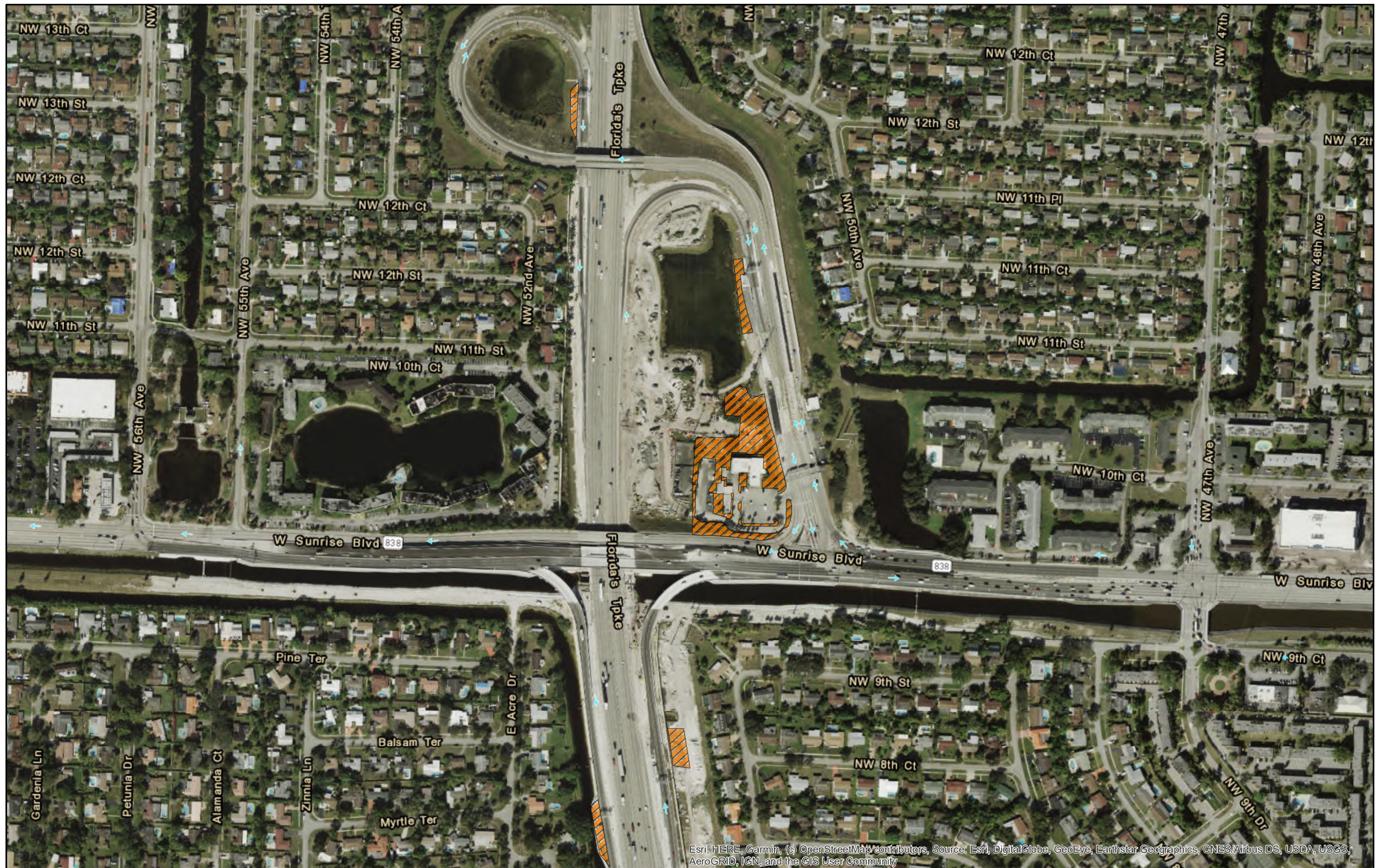
TOLLING AND TELECOMMUNICATIONS EQUIPMENT (NOT INCLUDED)

The scope of this contract does not include tolling and telecommunications equipment, tower



Source: Esri, DigitalGlobe, GeoEye, Earthstar Geographics, CNES/Airbus DS, USDA, USGS, AeroGRID, IGN, and the GIS User Community

| DATE | | BY | | DESCRIPTION | | REVISIONS | | | |
|--|--|----|--|--|--|---|--|--------------|--|
| 1/2021 | | | | | | | | | |
| | | | |  Mowing Area | |  | | | |
| | | | | SHEET TOTAL ACRES = 0.13 | | PLANS PREPARED BY FLORIDA'S TURNPIKE ENTERPRISE | | | |
| STATE OF FLORIDA DEPARTMENT OF TRANSPORTATION | | | | FACILITY MOWING INVENTORY ML MM 3.5X: COUNTYLINE TOLL | | | | SHEET NO. | |
| | | | | | | | | | |
| SR-91 | | | | Dade | | | | | |



Esri, HERE, Garmin, (c) OpenStreetMap contributors, Source: Esri, DigitalGlobe, GeoEye, Earthstar Geographics, CNES/Airbus DS, USDA, USGS, AeroGRID, IGN, and the GIS User Community

| DATE | | BY | | DESCRIPTION | | REVISIONS | | DATE | | BY | | DESCRIPTION | |
|--------|--|----|--|--|--|-----------|--|------|--|----|--|------------------------------|--|
| 1/2021 | | | |  Facility Mowing Area | | | | | | | | SHEET TOTAL ACRES = 2.2 ACRE | |

PLANS PREPARED BY
FLORIDA'S TURNPIKE
ENTERPRISE

| | | |
|------------------------------|---------|----------------------|
| STATE OF FLORIDA | | |
| DEPARTMENT OF TRANSPORTATION | | |
| ROAD NO. | COUNTY | FINANCIAL PROJECT ID |
| SR-91 | Broward | |

| | | |
|------------------------------|--|-----------|
| FACILITY MOWING INVENTORY | | SHEET NO. |
| Mainline MM 58: Sunrise Blvd | | |



Esri, HERE, Garmin, (c) OpenStreetMap contributors, Source: Esri, DigitalGlobe, GeoEye, Earthstar Geographics, CNES/Airbus DS, USDA, USGS, AeroGRID, IGN, and the GIS User Community

| DATE | | BY | | DESCRIPTION | | REVISIONS | |
|----------|--|---------|--|---|--|---|--|
| 1/2021 | | | | | | | |
| | | | |  Mowing Area | |  | |
| | | | | SHEET TOTAL ACRES = 2.9 | | PLANS PREPARED BY FLORIDA'S TURNPIKE ENTERPRISE | |
| | | | | STATE OF FLORIDA DEPARTMENT OF TRANSPORTATION | | | FACILITY MOWING INVENTORY Mainline MM 65 :Pompano Operations Center |
| ROAD NO. | | COUNTY | | FINANCIAL PROJECT ID | | SHEET NO. | |
| SR-91 | | Broward | | | | | |