



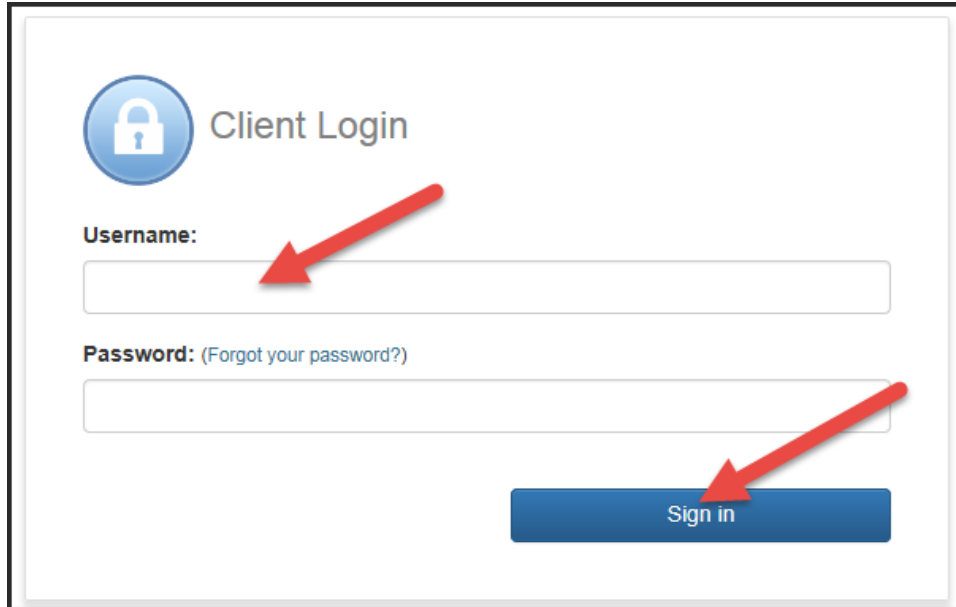
**FDOT External FTP Server (FTPEXT)
Guest Account Guide**

Table of Contents

Logging onto the FTP Server	3
Navigating to a specific folder.....	4
Downloading Files.....	5
Using FileZilla to Connect to the FTP Server	6

Logging onto the FTP Server

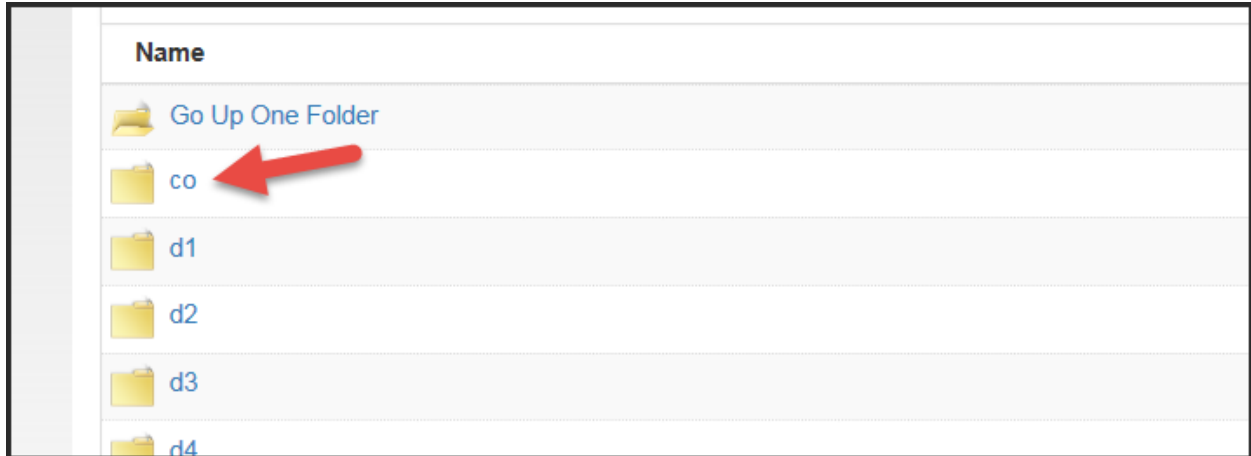
1. Go to <https://ftp.fdot.gov> if connecting using FileZilla or another SSH client please see [Using FileZilla to connect to the FTP Server](#).
2. Type in the **Username:** as **Guest**. No **Password:** is required, then click on **Sign in**.



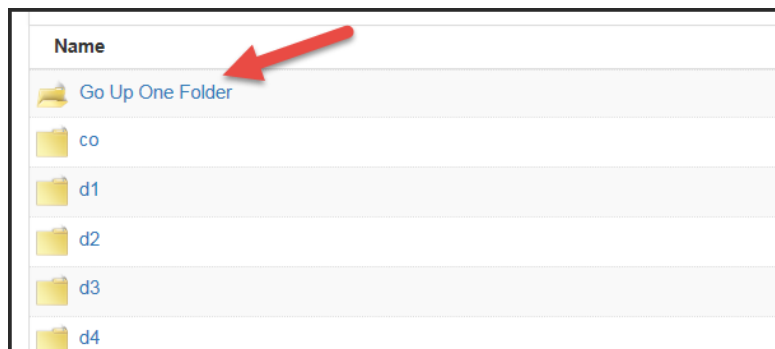
The screenshot shows a 'Client Login' form. At the top left is a blue circular icon with a white padlock. To its right is the text 'Client Login'. Below this are two input fields: 'Username:' followed by a text box, and 'Password: (Forgot your password?)' followed by a text box. A blue 'Sign in' button is located at the bottom right. Three red arrows point to the Username input field, the Password input field, and the Sign in button.

Navigating to a specific folder


1. Once logged in, you will can click on the name of the folder you want to navigate to.



2. Or click **Go Up One Folder** if you need to go up one folder.

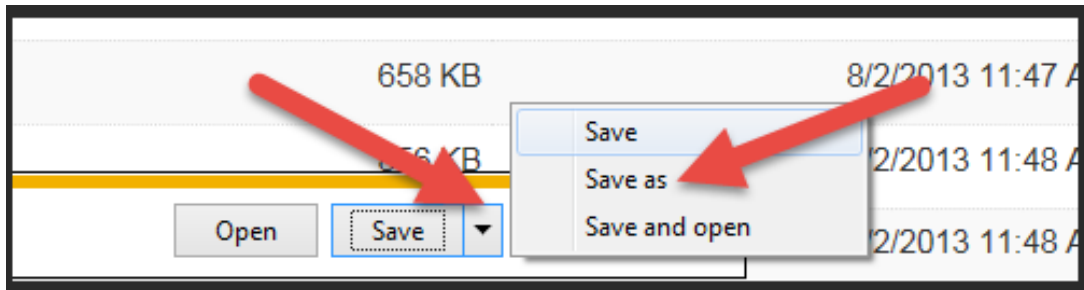


Downloading Files

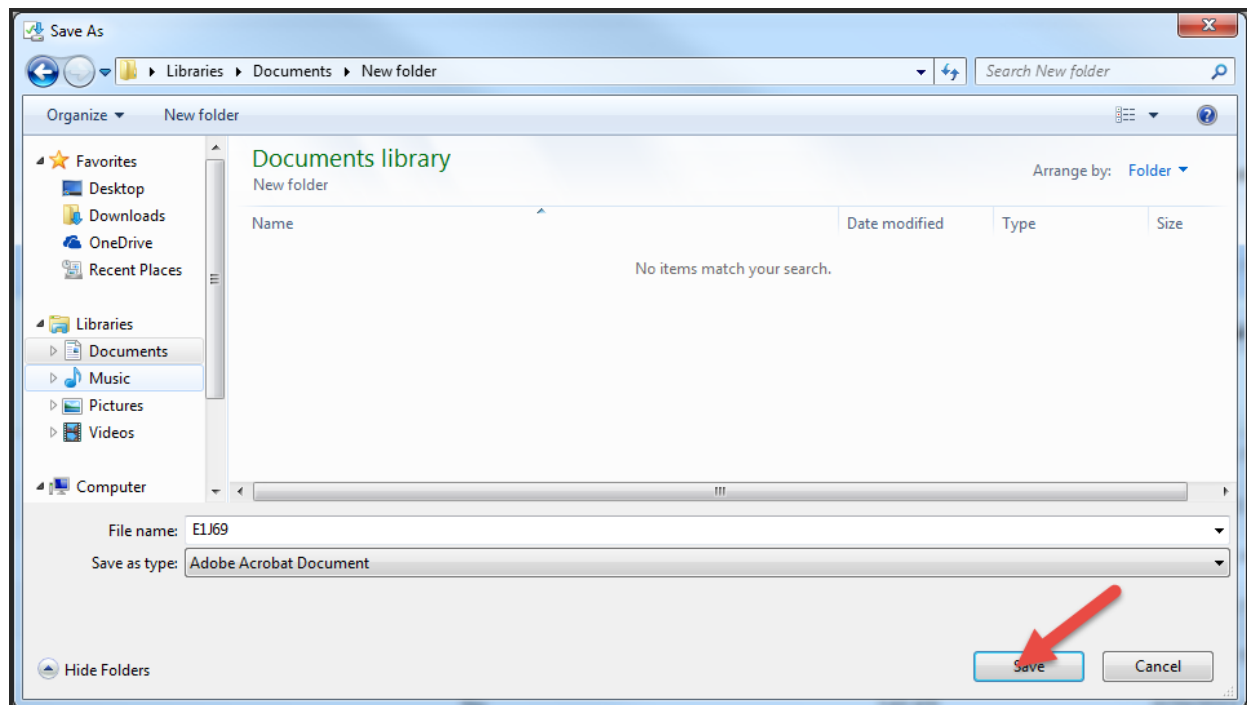
1. To download a file, click on  next to the file you want to download.
2. Click on **Download**, a notification will pop up at the bottom.



3. Click on the drop down menu for **Save** and then click on **Save as**.



4. Choose the directory on your PC where you would like to save the document and then click on **Save**.

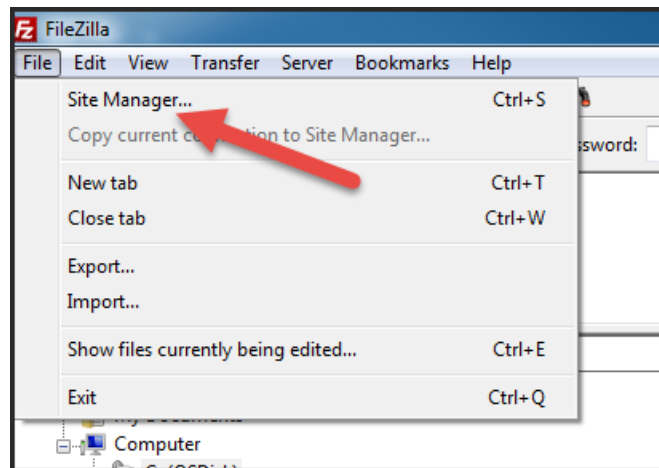


Using FileZilla to Connect to the FTP Server

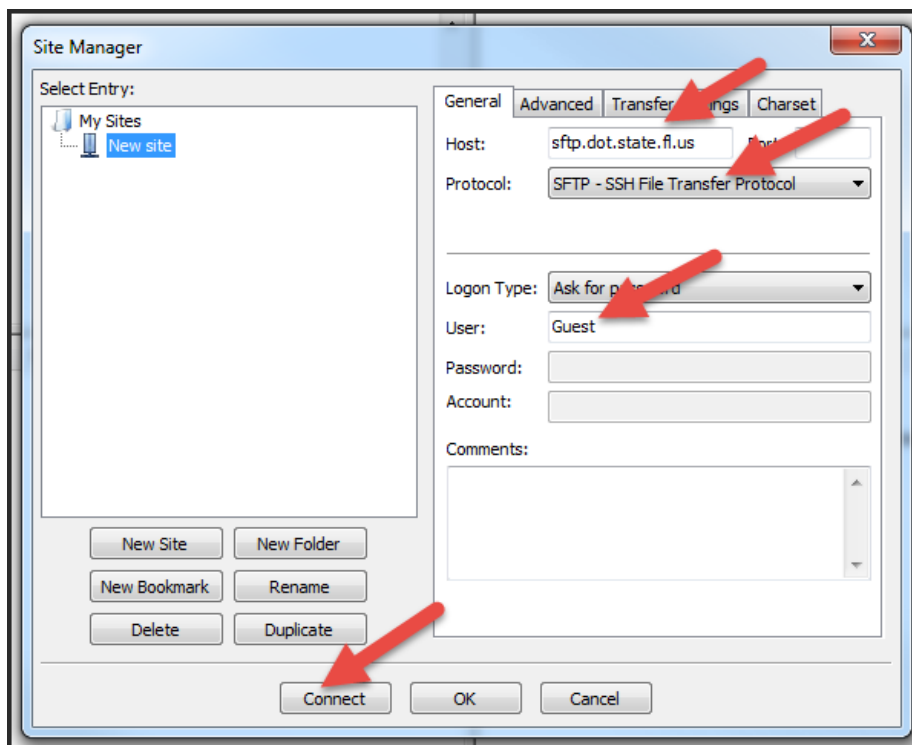
* The FileZilla version 3.18.0 was used to compile these instructions.

If a different FTP client is used or if the version installed is different, these instructions may vary.

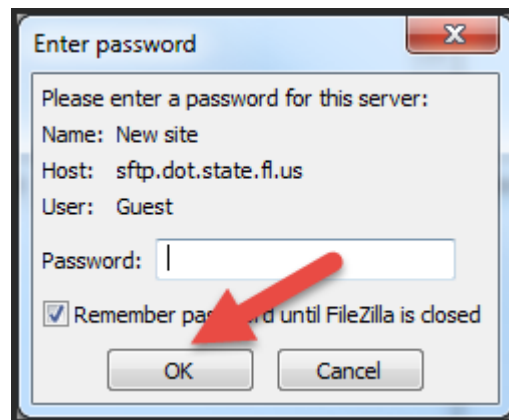
1. Open FileZilla, then click on **File**, then **Site Manager**.



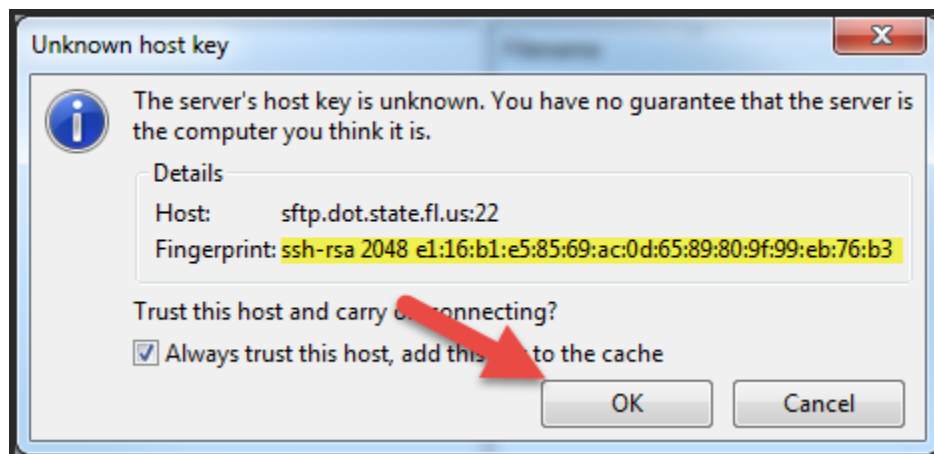
2. Enter ftp.fdot.gov in the **Host** field and change the **Protocol** to SFTP – SSH File Transfer Protocol. Enter the username Guest into the **User** field, then click on **Connect**.



3. You will be prompted for a password, leave this field blank and then click on **OK**.



4. If you get an **Unknown host key** error when logging in for the first time, verify the fingerprint matches the fingerprint below. Click on the **Always trust this host, add this to the cache**, and then click on **OK**.



*Please note that this error is normal behavior and is part of the TOFU (Trust on First User) security model as employed by SSH. Please see https://en.wikipedia.org/wiki/Trust_on_first_use for more information on this.

5. You will be brought to the folders you have access to. You can now use FileZilla as you normally would.