



Florida Department of Transportation

RICK SCOTT
GOVERNOR

1000 NW 111th Avenue
Miami, Florida 33172-5800

JIM BOXOLD
SECRETARY

Addendum #2

Dated: August 11, 2015

**FAILURE TO LOAD ALL AMENDMENT FILES OR TO SUBMIT THE SIGNED ADDENDUM
PAGE PRIOR TO THE LETTING DATE WILL CAUSE THE BID TO BE
NON-RESPONSIVE.**

Project/ Proposal Number: E-6J90
Financial Project Number: 417740-8-92-01/417740-9-92-01/417740-9-92-02
Contract Number: E-6J90
County(ies): Miami-Dade County
Letting Date/ Time: September 23, 2015 at 10:00 A.M.
Location: District Six, Adam Leigh Cann Building
1000 NW 111th Avenue
Miami, Florida 33172
Project Description: A low Bid Design-Build contract to solicit competitive Bid Prices and Technical Proposals from Proposers for the replacement of ITS devices in Miami-Dade County.

Please note the changes as follows:

Signing Concept Plan Sheets S-04, S-10, S-12, and S-17 have been revised. Bidders need to replace corresponding sheets with these revised sheets.

Addendum Attachments and Amendment Notification:

If you are a BID DOCUMENT HOLDER for the subject project, please go to the Online Ordering Web Site at <https://www3.dot.state.fl.us/ContractProposalProcessingOnlineOrdering/> to download the new bidding documents and amendment files for this addendum. Please acknowledge receipt of this addendum in Expedite Bid by opening the Acceptance of Bidding Acknowledgements folder and confirming your acknowledgement of Amendment and Addenda files or fax the signed copy to District Six District Contracts Office at (305) 470-5309 prior to the letting date, September 23, 2015.



Nadine Chinapoo
Contract Supervisor

District Contracts, Design-Build, and Commodities & Contractual Services

Please acknowledge receipt of this addendum by signing in the area provided below.

Return this acknowledgment by fax (305) 470-5309 to District Six District Contracts Office.

COMPANY NAME

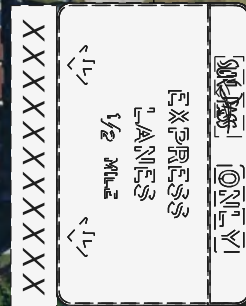
SIGNATURE

TITLE

PRINT

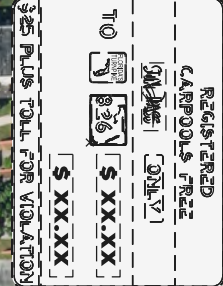
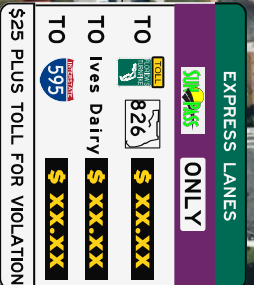


INSTALL ONE NEW
COLOR LANE STATUS
DMS PANEL



EXISTING SIGN PANEL
TO REMAIN
EXISTING DMS PANEL
TO BE REMOVED

INSTALL NEW
SIGN PANEL (GS-01)
(24'-0" X 20'-6")
INSTALL THREE NEW
COLOR TOLL AMOUNT
DMS PANELS



EXISTING SIGN
AND DMS PANELS
TO BE REMOVED

I-95 NB BEFORE NW 20th STREET
I-95 NB AT NW 20th STREET

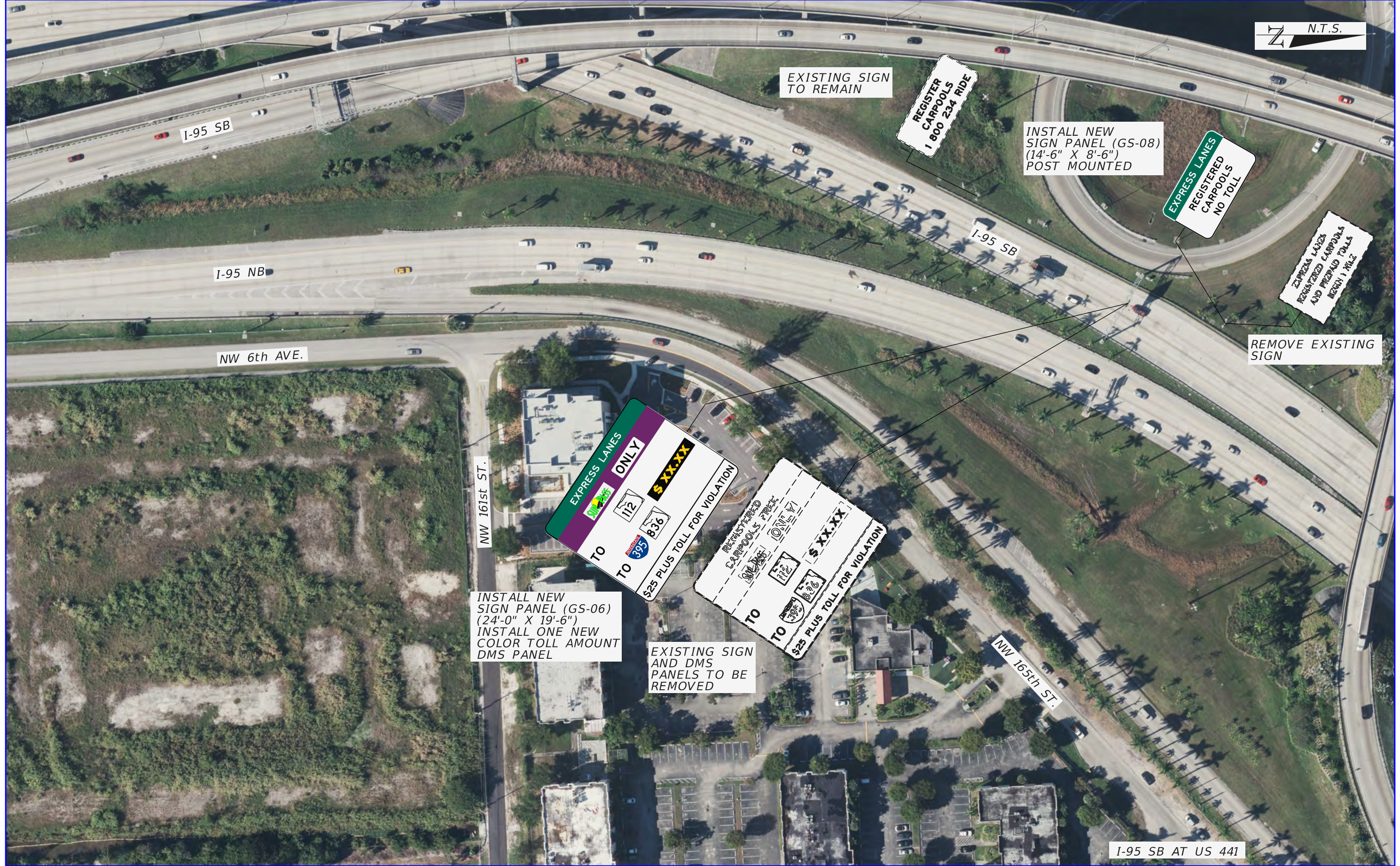
REVISIONS			
DATE	DESCRIPTION	DATE	DESCRIPTION

HNTB CORPORATION
8700 W. FLAGLER STREET
SUITE 402
MIAMI, FL 33174-2428
TEL.: (305) 551-8100
FAX: (305) 551-2800

STATE OF FLORIDA DEPARTMENT OF TRANSPORTATION		
ROAD NO.	COUNTY	FINANCIAL PROJECT ID
9A	MIAMI-DADE	417740-8-92-01

SIGNING CONCEPT PLAN

SHEET NO.
S-04



INSTALL NEW SIGN PANEL (GS-06) (24'-0" X 19'-6")
 INSTALL ONE NEW COLOR TOLL AMOUNT DMS PANEL

EXISTING SIGN AND DMS PANELS TO BE REMOVED

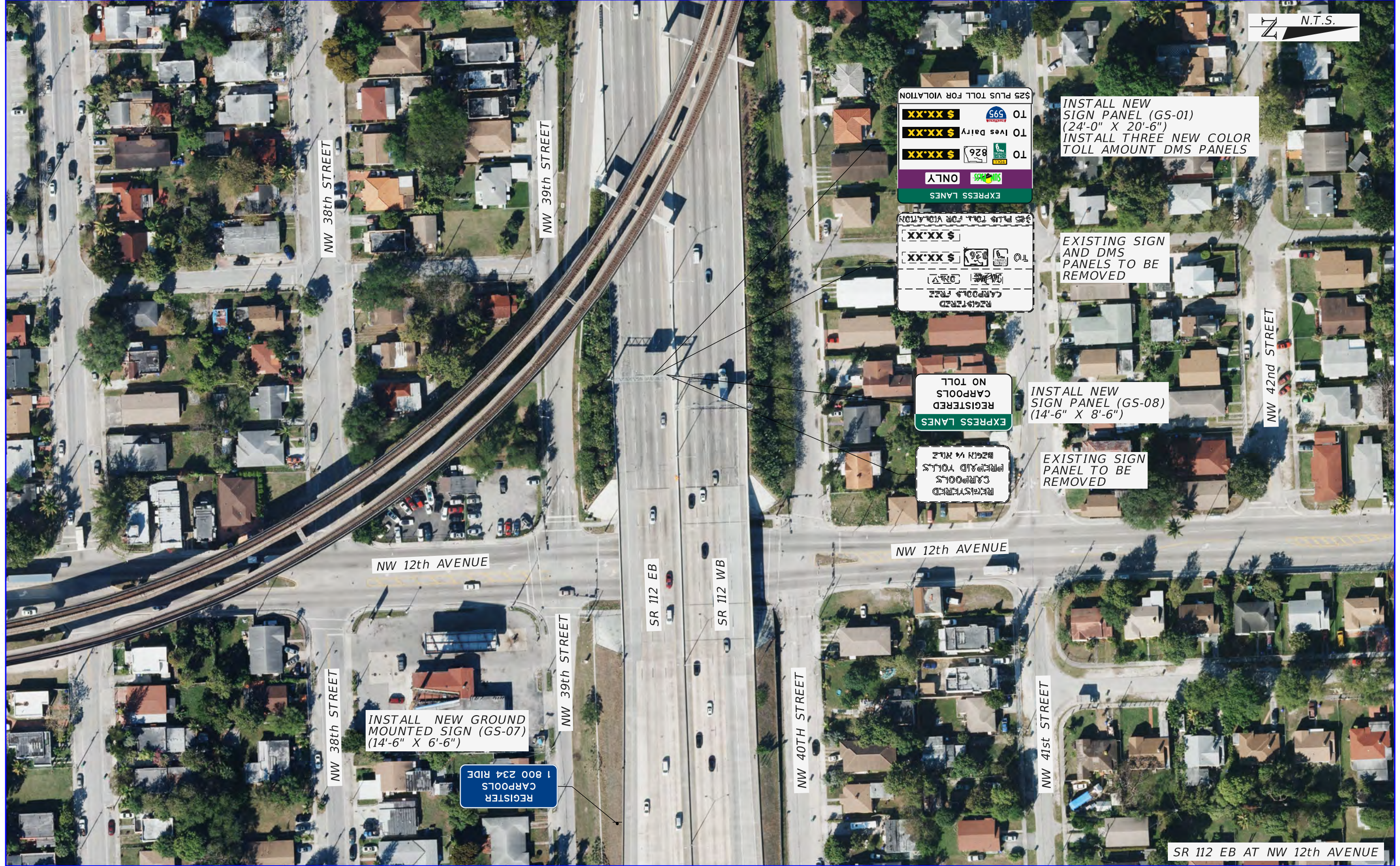
REVISIONS			
DATE	DESCRIPTION	DATE	DESCRIPTION

HNTB CORPORATION
 8700 W. FLAGLER STREET
 SUITE 402
 MIAMI, FL 33174-2428
 TEL.: (305) 551-8100
 FAX : (305) 551-2800

STATE OF FLORIDA DEPARTMENT OF TRANSPORTATION		
ROAD NO.	COUNTY	FINANCIAL PROJECT ID
9A	MIAMI-DADE	417740-8-92-01

SIGNING CONCEPT PLAN

SHEET NO.
S-10



REVISIONS	
DATE	DESCRIPTION

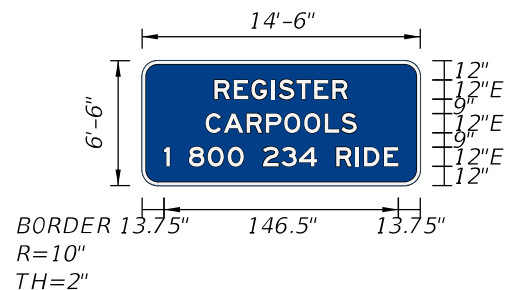
HNTB CORPORATION
 8700 W. FLAGLER STREET
 SUITE 402
 MIAMI, FL 33174-2428
 TEL.: (305) 551-8100
 FAX : (305) 551-2800

STATE OF FLORIDA DEPARTMENT OF TRANSPORTATION		
ROAD NO.	COUNTY	FINANCIAL PROJECT ID
9A	MIAMI-DADE	417740-8-92-01

SIGNING CONCEPT PLAN

SHEET NO.
S-12

SIGN NAME	GS-07	QTY	1	SIGN NUMBER	STATION(S)
PANEL		BORDER		none	
WIDTH	14'-6"	WIDTH	2"		
HEIGHT	6'-6"	RADII	10"		
LEGEND	White	COLOR	White		
COLOR	Blue				
SYMBOL(S)	ANGLE	X	Y	WID	HT



NO. OF LIGHT FIXTURES	FIXTURE SPACING	PHOTOMETRIC CURVE	WATT	VOLTAGE
-----------------------	-----------------	-------------------	------	---------

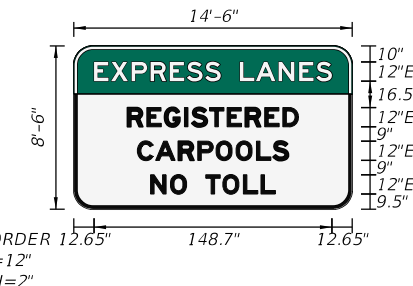
COPY		R	E	G	I	S	T	E	R	L										
SPACE	45.3	12.1	11	12.5	4.6	11	11	11.4	9.7	45.3	83.4									
COPY		C	A	R	P	O	O	L	S	L										
SPACE	39.7	11.4	14.3	12.1	11.4	12.5	12.8	10.3	9.7	39.7	94.6									
COPY		1		8	0	0		2	3	4		R	I	D	E	L				
SPACE	13.7	3.6	12	11.8	12.5	10.1	12	11.4	11	11.3	12	12.1	5.3	12.5	9	13.7	146.5			

SIGN NAME		QTY		SIGN NUMBER	STATION(S)
PANEL		BORDER			
WIDTH		WIDTH			
HEIGHT		RADII			
LEGEND		COLOR			
COLOR					
SYMBOL(S)	ANGLE	X	Y	WID	HT

NO. OF LIGHT FIXTURES	FIXTURE SPACING	PHOTOMETRIC CURVE	WATT	VOLTAGE
-----------------------	-----------------	-------------------	------	---------

COPY																				
SPACE																				
COPY																				
SPACE																				
COPY																				
SPACE																				
COPY																				
SPACE																				

SIGN NAME	GS-08	QTY	3	SIGN NUMBER	STATION(S)
PANEL		BORDER		none	
WIDTH	14'-6"	WIDTH	2"		
HEIGHT	8'-6"	RADII	12"		
LEGEND	White	COLOR	Black		
COLOR	White				
SYMBOL(S)	ANGLE	X	Y	WID	HT



NO. OF LIGHT FIXTURES	FIXTURE SPACING	PHOTOMETRIC CURVE	WATT	VOLTAGE
-----------------------	-----------------	-------------------	------	---------

COPY		E	X	P	R	E	S	S	L	A	N	E	S	L						
SPACE	12.7	10.7	12.8	11.8	12.1	10.7	11.4	9.7	12	10	14.3	12.8	10.7	9.7	12.7	148.7				
COPY		R	E	G	I	S	T	E	R	E	D	L								
SPACE	33.5	12.1	11	12.5	4.6	11	11	11.4	12.1	11.4	9.7	33.5	106.9							
COPY		C	A	R	P	O	O	L	S	L										
SPACE	39.7	11.4	14.3	12.1	11.4	12.5	12.8	10.3	9.7	39.7	94.6									
COPY		N	O		T	O	L	L	L											
SPACE	47.9	12.5	10.1	12	10.7	12.8	11	9	47.9	78.1										

SIGN NAME		QTY		SIGN NUMBER	STATION(S)
PANEL		BORDER			
WIDTH		WIDTH			
HEIGHT		RADII			
LEGEND		COLOR			
COLOR					
SYMBOL(S)	ANGLE	X	Y	WID	HT

NO. OF LIGHT FIXTURES	FIXTURE SPACING	PHOTOMETRIC CURVE	WATT	VOLTAGE
-----------------------	-----------------	-------------------	------	---------

COPY																				
SPACE																				
COPY																				
SPACE																				
COPY																				
SPACE																				
COPY																				
SPACE																				

<table border="1" style="width:100%"> <thead> <tr> <th colspan="2">REVISIONS</th></tr> <tr> <th>DATE</th><th>DESCRIPTION</th></tr> </thead> <tbody> <tr> <td> </td><td> </td></tr> </tbody> </table>		REVISIONS		DATE	DESCRIPTION			<p>HNTB CORPORATION 8700 W. FLAGLER STREET SUITE 402 MIAMI, FL 33174-2428 TEL.: (305) 551-8100 FAX : (305) 551-2800</p>	<p style="text-align: center;">STATE OF FLORIDA DEPARTMENT OF TRANSPORTATION</p> <table border="1" style="width:100%"> <tr> <th>ROAD NO.</th><th>COUNTY</th><th>FINANCIAL PROJECT ID</th></tr> <tr> <td>9A</td><td>MIAMI-DADE</td><td>417740-8-92-01</td></tr> </table>	ROAD NO.	COUNTY	FINANCIAL PROJECT ID	9A	MIAMI-DADE	417740-8-92-01	<p style="text-align: center;">GUIDE SIGN</p>	<p style="text-align: center;">SHEET NO. S-17</p>
REVISIONS																	
DATE	DESCRIPTION																
ROAD NO.	COUNTY	FINANCIAL PROJECT ID															
9A	MIAMI-DADE	417740-8-92-01															