



*Florida Department of Transportation*

RON DESANTIS  
GOVERNOR

719 S. Woodland Boulevard  
DeLand, Florida 32720-6834

KEVIN J. THIBAUT, P.E.  
SECRETARY

March 6, 2019  
**ADDENDUM NO. 1**

To: PROSPECTIVE BIDDERS

FINANCIAL PROJECT NUMBER: 423391-2-72-09

CONTRACT NUMBER: E5U79

COUNTY: Marion

DESCRIPTION: Asphalt Repair

---

**SPECIFICATIONS PACKAGE REVISION**

Pages 40, 41, 42, and 47 of the Specification Package are replaced with the attached pages, please substitute these pages for the like-numbered pages in the Specification Package you now have.

Please go to the online ordering website at <https://fdotwp1.dot.state.fl.us/contractproposalprocessingonlineordering/> to download the documents titled E5U79Addendum1.

**NOTIFICATION**

If you are a BID DOCUMENT HOLDER for the subject project, please go to the Online Ordering website at: <https://fdotwp1.dot.state.fl.us/contractproposalprocessingonlineordering/> to download the E5U79.001x for this Bid Document from your Order History.

If you are a BID DOCUMENT HOLDER, please acknowledge receipt of this Addendum in Project Bids by opening the Acceptance of Bidding Acknowledgements folder and confirming your acknowledgement of Amendment and Addenda files. Failure to load all amendment files will cause the bid to be rejected.

Sincerely,

A handwritten signature in blue ink, appearing to read "Jeanne Feeney", is written over a blue circular stamp or seal.

Jeanne Feeney  
District Contracts Administrator  
District 5

# US 441

## Northbound

<b>Site # 11</b>	Sec. 36001	Mile Post: 6.112 - 6.170			
Begin Sta. 1006+112	End Sta. 1006+17	Lane - R2			
Begin at: GPS Point 29°18'16.80"N	82° 9'6.00"W	End at: GPS Point 29°18'19.02"N	82° 9'5.88"W		

Pay Item Number	Pay Item Description	W	L	Approximate Units
0327 70 11	MILLING EXIST ASPH PAVT, 2 1/4" AVG DEPTH	16	306	
0334 1 53	SUPERPAVE ASPHALTIC CONCRETE (Traffic C, PG 76-22)	16	306	
0337 7 25	ASPH CONC FC, FC-5, PG 76-22	16	306	
0706 3	RETRO-REFLECTIVE PAVEMENT MARKERS			8.00
E710 11121	PAINTED PAVEMENT MARKINGS, STANDARD, WHITE, SOLID 6"		307	
E710 11221	PAINTED PAVEMENT MARKINGS, STANDARD, YELLOW, SOLID 6"			
E710 11 141	PAINTED PAVEMENT MARKINGS, STANDARD, WHITE, SKIP, 6"			

<b>Site # 12</b>	Sec. 36001	Mile Post: 6.770-6.978			
Begin Sta. 1006+77	End Sta. 1006+978	Lane - R2			
Begin at: GPS Point 29°18'50.52"N	82° 9'5.76"W	End at: GPS Point 29°19'2.10"N	82° 9'5.64"W		

Pay Item Number	Pay Item Description	W	L	Approximate Units
0327 70 11	MILLING EXIST ASPH PAVT, 2 1/4" AVG DEPTH	12	1099	
0334 1 53	SUPERPAVE ASPHALTIC CONCRETE (Traffic C, PG 76-22)	12	1099	
0337 7 25	ASPH CONC FC, FC-5, PG 76-22	12	1099	
0706 3	RETRO-REFLECTIVE PAVEMENT MARKERS			28.00
E710 11 121	PAINTED PAVEMENT MARKINGS, STANDARD, WHITE, SOLID 6"			
E710 11 221	PAINTED PAVEMENT MARKINGS, STANDARD, YELLOW, SOLID 6"			
E710 11 141	PAINTED PAVEMENT MARKINGS, STANDARD, WHITE, SKIP, 6"		1099	

<b>Site # 13</b>	Sec. 36001	Mile Post: 7.172-7.252			
Begin Sta. 1007+172	End Sta. 1007+252	Lane - R2(not turn lane)			
Begin at: GPS Point 29°19'11.46"N	82° 9'5.52"W	End at: GPS Point 29°19'15.78"N	82° 9'5.52"W		

Pay Item Number	Pay Item Description	W	L	Approximate Units
0327 70 11	MILLING EXIST ASPH PAVT, 2 1/4" AVG DEPTH	12	423	
0334 1 53	SUPERPAVE ASPHALTIC CONCRETE (Traffic C, PG 76-22)	12	423	
0337 7 25	ASPH CONC FC, FC-5, PG 76-22	12	423	
0706 3	RETRO-REFLECTIVE PAVEMENT MARKERS			11.00
E710 11121	PAINTED PAVEMENT MARKINGS, STANDARD, WHITE, SOLID 6"			
E710 11221	PAINTED PAVEMENT MARKINGS, STANDARD, YELLOW, SOLID 6"			
E710 11 141	PAINTED PAVEMENT MARKINGS, STANDARD, WHITE, SKIP, 6"		423	

<b>Site # 14</b>		Sec. 36001	Mile Post: 7.486-7.525					
Begin Sta.	1007+486	End Sta.	1007+525	Lane - R2 (outside lane)				
Begin at:	GPS Point 29°19'27.99"N		82° 9'5.52"W	End at:	GPS Point 29°19'30.13"N		82° 9'5.63"W	
Pay Item Number	Pay Item Description			W	L	Approximate Units		
0327 70 11	MILLING EXIST ASPH PAVT, 2 1/4" AVG DEPTH			12	206			
0334 1 53	SUPERPAVE ASPHALTIC CONCRETE (Traffic C, PG 76-22)			12	206			
0337 7 25	ASPH CONC FC, FC-5, PG 76-22			12	206			
0706 3	RETRO-REFLECTIVE PAVEMENT MARKERS					6.00		
E710 11121	PAINTED PAVEMENT MARKINGS, STANDARD, WHITE, SOLID 6"							
E710 11221	PAINTED PAVEMENT MARKINGS, STANDARD, YELLOW, SOLID 6"							
E710 11 141	PAINTED PAVEMENT MARKINGS, STANDARD, WHITE, SKIP, 6"				206			
<b>Site # 15</b>		Sec. 36001	Mile Post: 7.547-7.652					
Begin Sta.	1007+547	End Sta.	1007+652	Lane - R2 (outside lane)				
Begin at:	GPS Point 29°19'31.08"N		82° 9'5.52"W	End at:	GPS Point 29°19'36.48"N		82° 9'5.64"W	
Pay Item Number	Pay Item Description			W	L	Approximate Units		
0327 70 11	MILLING EXIST ASPH PAVT, 2 1/4" AVG DEPTH			12	555			
0334 1 53	SUPERPAVE ASPHALTIC CONCRETE (Traffic C, PG 76-22)			12	555			
0337 7 25	ASPH CONC FC, FC-5, PG 76-22			12	555			
0706 3	RETRO-REFLECTIVE PAVEMENT MARKERS					14.00		
E710 11121	PAINTED PAVEMENT MARKINGS, STANDARD, WHITE, SOLID 6"							
E710 11221	PAINTED PAVEMENT MARKINGS, STANDARD, YELLOW, SOLID 6"							
E710 11 141	PAINTED PAVEMENT MARKINGS, STANDARD, WHITE, SKIP, 6"				555			
<b>Site # 16</b>		Sec. 36001	Mile Post: 7.965-8.101					
Begin Sta.	1007+965	End Sta.	1008+101	Lane - R2				
Begin at:	GPS Point 29°19'52.92"N		82° 9'5.40"W	End at:	GPS Point 29°20'0.42"N		82° 9'5.46"W	
Pay Item Number	Pay Item Description			W	L	Approximate Units		
0327 70 11	MILLING EXIST ASPH PAVT, 2 1/4" AVG DEPTH			12	719			
0334 1 53	SUPERPAVE ASPHALTIC CONCRETE (Traffic C, PG 76-22)			12	719			
0337 7 25	ASPH CONC FC, FC-5, PG 76-22			12	719			
0706 3	RETRO-REFLECTIVE PAVEMENT MARKERS					18.00		
E710 11121	PAINTED PAVEMENT MARKINGS, STANDARD, WHITE, SOLID 6"							
E710 11221	PAINTED PAVEMENT MARKINGS, STANDARD, YELLOW, SOLID 6"							
E710 11 141	PAINTED PAVEMENT MARKINGS, STANDARD, WHITE, SKIP, 6"				719			

## Southbound

<b>Site # 17</b>	Sec. 36001	Mile Post: 8.173-8.310				
Begin Sta. 1008+173	End Sta. 1008+31	Lane - L2				
Begin at: GPS Point 29°20'4.32"N	82° 9'6.48"W	End at: GPS Point 29°20'11.28"N	82° 9'6.42"W			

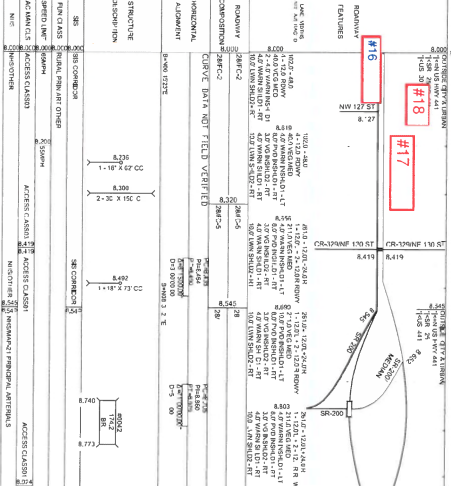
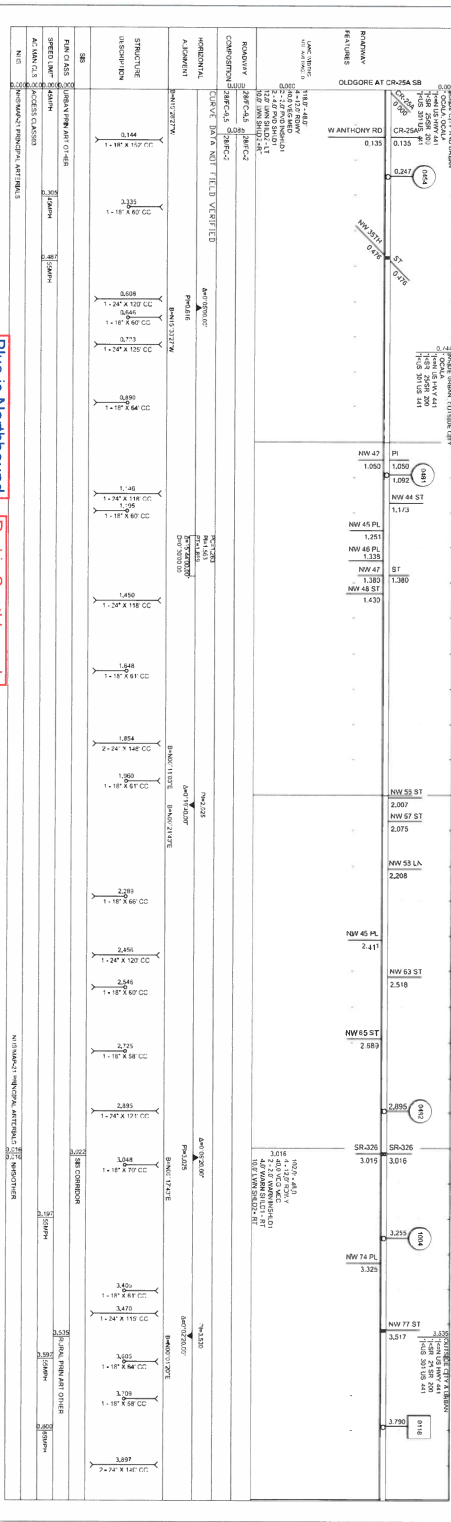
Pay Item Number	Pay Item Description	W	L	Approximate Units
0327 70 11	MILLING EXIST ASPH PAVT, 2 1/4" AVG DEPTH	12	724	
0334 1 53	SUPERPAVE ASPHALTIC CONCRETE (Traffic C, PG 76-22)	12	724	
0337 7 25	ASPH CONC FC, FC-5, PG 76-22	12	724	
0706 3	RETRO-REFLECTIVE PAVEMENT MARKERS			19.00
E710 11121	PAINTED PAVEMENT MARKINGS, STANDARD, WHITE, SOLID 6"			
E710 11221	PAINTED PAVEMENT MARKINGS, STANDARD, YELLOW, SOLID 6"			
E710 11 141	PAINTED PAVEMENT MARKINGS, STANDARD, WHITE, SKIP, 6"		724	

<b>Site # 18</b>	Sec. 36001	Mile Post: 8.071-8.147				
Begin Sta. 1008+071	End Sta. 1008+147	Lane - L2				
Begin at: GPS Point 29°19'58.98"N	82° 9'6.36"W	End at: GPS Point 29°20'2.94"N	82° 9'6.42"W			

Pay Item Number	Pay Item Description	W	L	Approximate Units
0327 70 11	MILLING EXIST ASPH PAVT, 2 1/4" AVG DEPTH	12	402	
0334 1 53	SUPERPAVE ASPHALTIC CONCRETE (Traffic C, PG 76-22)	12	402	
0337 7 25	ASPH CONC FC, FC-5, PG 76-22	12	402	
0706 3	RETRO-REFLECTIVE PAVEMENT MARKERS			11.00
E710 11121	PAINTED PAVEMENT MARKINGS, STANDARD, WHITE, SOLID 6"			
E710 11221	PAINTED PAVEMENT MARKINGS, STANDARD, YELLOW, SOLID 6"			
E710 11 141	PAINTED PAVEMENT MARKINGS, STANDARD, WHITE, SKIP, 6"		402	

<b>Site # 19</b>	Sec. 36001	Mile Post: 7.954-7.980				
Begin Sta. 1007+954	End Sta. 1007+98	Lane - L2				
Begin at: GPS Point 29°19'52.82"N	82° 9'6.48"W	End at: GPS Point 29°19'54.18"N	82° 9'6.42"W			

Pay Item Number	Pay Item Description	W	L	Approximate Units
0327 70 11	MILLING EXIST ASPH PAVT, 2 1/4" AVG DEPTH	12	100	
0334 1 53	SUPERPAVE ASPHALTIC CONCRETE (Traffic C, PG 76-22)	12	138	
0337 7 25	ASPH CONC FC, FC-5, PG 76-22	12	138	
0706 3	RETRO-REFLECTIVE PAVEMENT MARKERS			4.00
E710 11121	PAINTED PAVEMENT MARKINGS, STANDARD, WHITE, SOLID 6"			
E710 11221	PAINTED PAVEMENT MARKINGS, STANDARD, YELLOW, SOLID 6"			
E710 11 141	PAINTED PAVEMENT MARKINGS, STANDARD, WHITE, SKIP, 6"		138	



LINE CLASS	STRUCTURE	DESCRIPTION	START STA	END STA	WIDTH	DEPTH	OTHER
ROADWAY			0+00	0+15	12.0	1.5	
ROADWAY			0+15	0+30	12.0	1.5	
ROADWAY			0+30	0+45	12.0	1.5	
ROADWAY			0+45	0+60	12.0	1.5	
ROADWAY			0+60	0+75	12.0	1.5	
ROADWAY			0+75	0+90	12.0	1.5	
ROADWAY			0+90	1+05	12.0	1.5	
ROADWAY			1+05	1+20	12.0	1.5	
ROADWAY			1+20	1+35	12.0	1.5	
ROADWAY			1+35	1+50	12.0	1.5	
ROADWAY			1+50	1+65	12.0	1.5	
ROADWAY			1+65	1+80	12.0	1.5	
ROADWAY			1+80	1+95	12.0	1.5	
ROADWAY			1+95	2+00	12.0	1.5	

LINE CLASS	STRUCTURE	DESCRIPTION	START STA	END STA	WIDTH	DEPTH	OTHER
ROADWAY			2+00	2+15	12.0	1.5	
ROADWAY			2+15	2+30	12.0	1.5	
ROADWAY			2+30	2+45	12.0	1.5	
ROADWAY			2+45	2+60	12.0	1.5	
ROADWAY			2+60	2+75	12.0	1.5	
ROADWAY			2+75	2+90	12.0	1.5	
ROADWAY			2+90	3+05	12.0	1.5	
ROADWAY			3+05	3+20	12.0	1.5	
ROADWAY			3+20	3+35	12.0	1.5	
ROADWAY			3+35	3+50	12.0	1.5	
ROADWAY			3+50	3+65	12.0	1.5	
ROADWAY			3+65	3+80	12.0	1.5	
ROADWAY			3+80	3+95	12.0	1.5	
ROADWAY			3+95	4+10	12.0	1.5	