



95 EXPRESS PHASE 3

Broward & Palm Beach Counties
From Stirling Road to Linton Boulevard



Phase 3B-2 Pre-Proposal Meeting

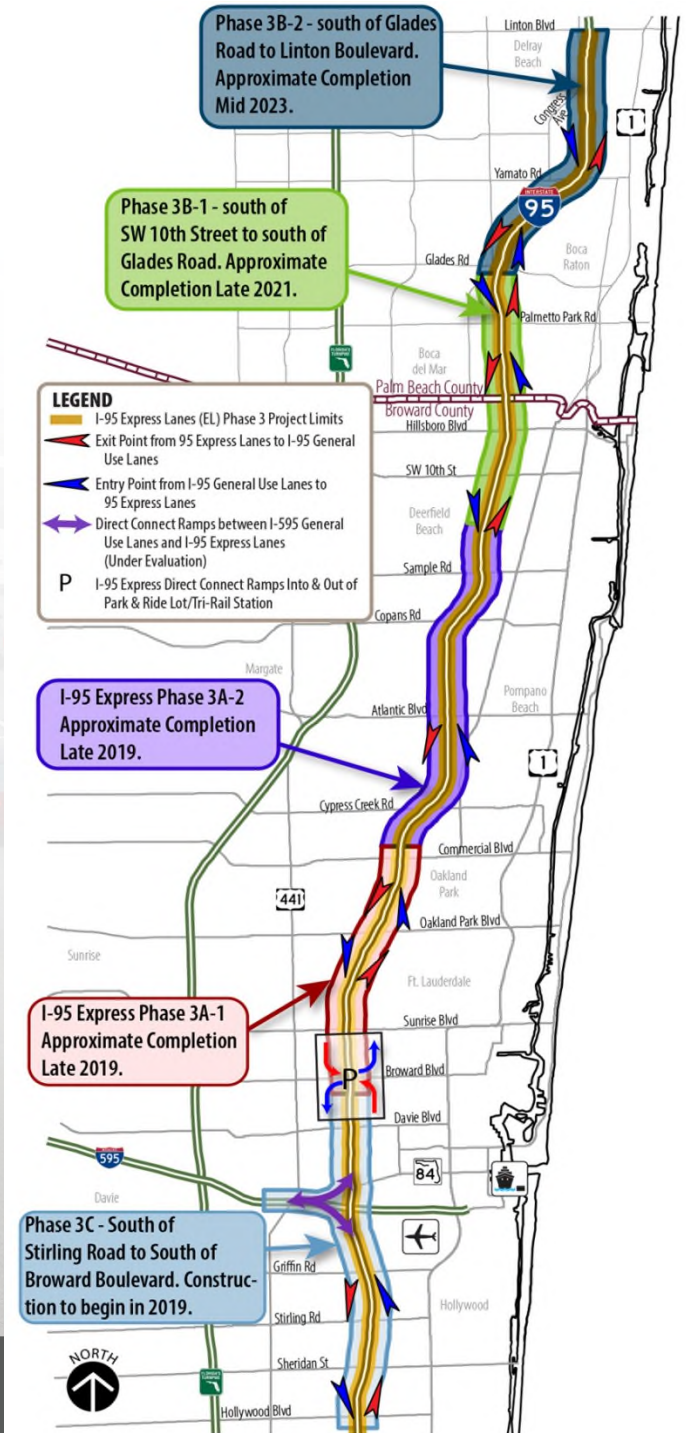
August 13, 2018

PRESENTATION OUTLINE

- 95 Express Phase 3 Implementation Plan
- Phase 3B-2 Project Overview
- Phase 3B-2 Schedule
- Utility Contacts
- Reference Material (RFP)
- Detection Methods
- Concept Conflict Overview
- Questions

95 EXPRESS PHASE 3 IMPLEMENTATION PLAN

- Phase 3A-1, 3A-2 and 3B-2 under construction (South of Broward Blvd. to South of Glades Rd.)
- Phase 3B-2 – South of Glades Rd. to Linton Blvd.
 - Ad - May 2018
 - Letting - March 2019
- Phase 3C – South of Stirling Road to South of Broward Blvd.
 - Ad - May 2017
 - Letting - April 2018



Slide 3

CR-P2

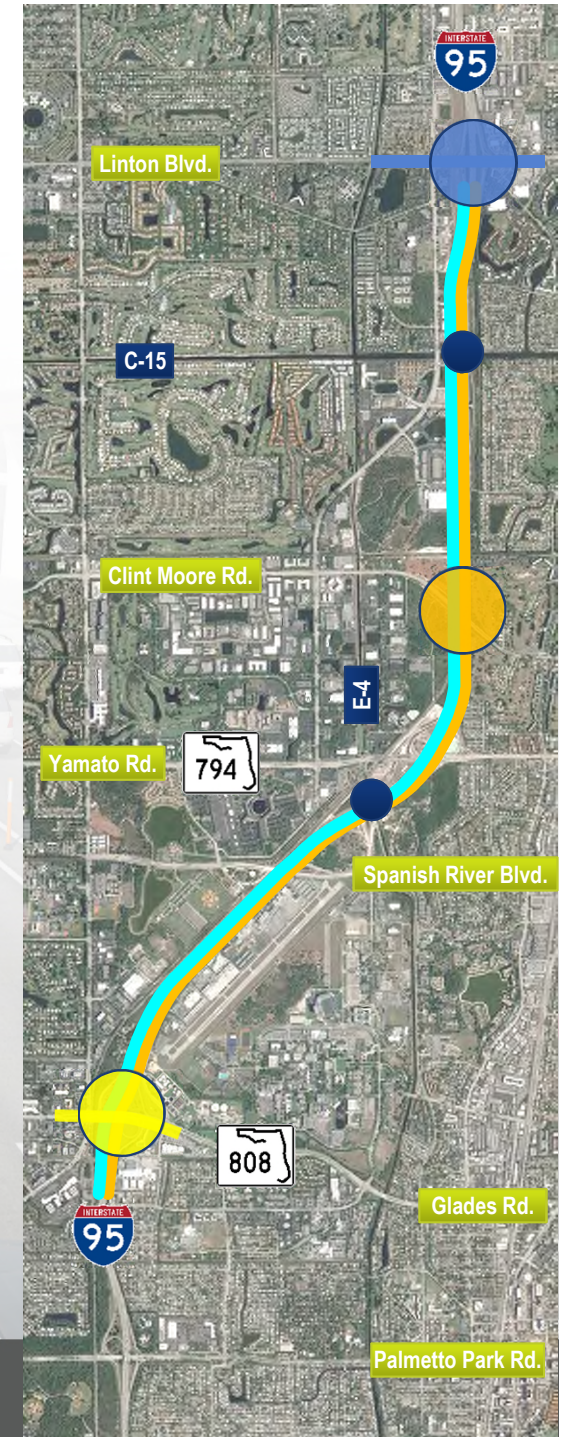
Vanita

Conference Room - Pompano, 8/7/2018

Phase 3B-2 Project Overview

I-95 Project Limits- South of Glades Rd to South of Linton Blvd.

- Major Improvements:
 - Addition of two lanes (one in each direction) on I-95 from South of Glades Rd. to South of Linton Blvd., for dual ELs each direction
 - Ingress/Egress Locations
 - 2 Mainline Bridge Widenings
 - Northbound and Southbound over C-15 Canal
 - Glades Rd Interchange and arterial improvements
 - Linton Blvd. Interchange and arterial improvements
 - Clint Moore Rd bridge replacement and Shared Use Path
 - Ramp Metering



Slide 4

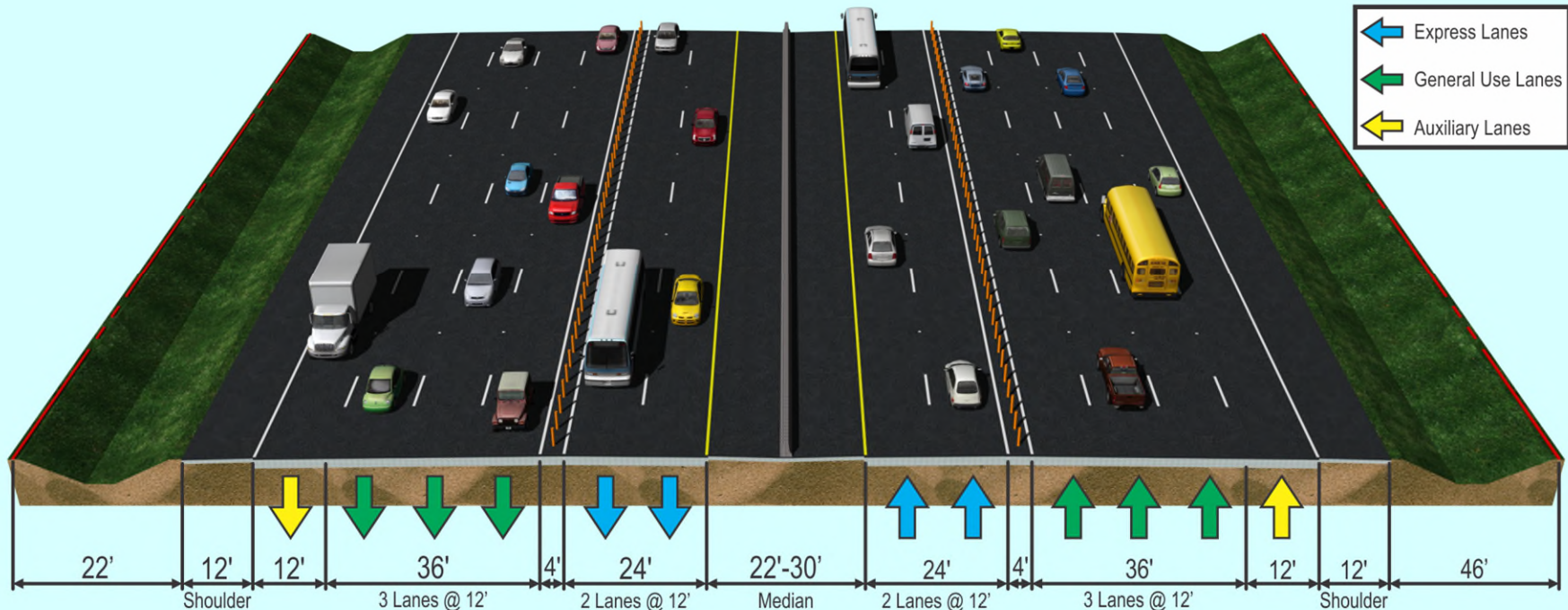
CR-P3

Vanita

Conference Room - Pompano, 8/7/2018

ROADWAY TYPICAL SECTION

Typical Section - 3 GP Lanes with Auxiliary Lanes



- Convert Existing HOV Lanes to Tolloed Express Lanes
- Adds One Additional Tolloed Express Lane in Each Direction with ~ 2' Widening
- Existing General Purpose and Auxiliary Lanes to Remain

Limits are:

- Glades Rd to Congress Ave (Spanish River Blvd. Interchange Limits)

Slide 5

CR-P4

Vanita

Conference Room - Pompano, 8/7/2018

PHASE 3B-2 SCHEDULE

- Advertisement
 - 5/29/2018
- Pre-Proposal Meeting
 - 8/13/2018
- Technical Proposals Due
 - 1/18/2019
- Alternative Technical Concept Meetings:
 - Sep. 11-12/Oct. 10-11/Nov. 5-6/Nov. 28
- Begin Construction (Field)
 - Spring 2020
- End Construction
 - Early 2024

Slide 6

CR-P5

Vanita

Conference Room - Pompano, 8/7/2018

I-95 Express 3B-2 Utilities



Utility Contacts

AT&T Distribution	Garth Bedward
CenturyLink (FKA Level 3)	Michael Nunez
City of Boca Traffic	Steve Riley
City of Boca Water/Sewer	Talia Garcia
City of Delray Beach Water	Cynthia Fuentes/Victor Majtenyi
Columbus Networks	Dave Schwartz/Matt Schwartz
Comcast	Tony Springsteel
Crown Castle Fiber (Fibernet Direct)	Danny Haskett
Fiberlight	Troy Gaeta
Florida Gas Transmission	Joe Sanchez
Florida Public Utilities	Dale Butcher
FPL Distribution	April Madison
FPL Transmission	Tricia D'Annunzio
Hotwire	Walter Sancho-Davila
MCI	Dean Boyers
Palm Beach County Traffic	Rod Friedel
Strome Networks	Nick Lenoci
Telefonica	Geraldo Salgado/Mario Pelegrini

Reference Documents

- Subsurface Utility Information
- Utility Base Map
- Locate Data (vertical)
- Utility Conflict Identification Sheets
- Preliminary Utility Matrix
- Utility Meetings/Minutes

UAO Documents

- As built
- Record drawings
- Mark ups
- GIS maps

Subsurface Utility Investigation

- I-95 Mainline
- Glades Rd
- Clint Moore Rd
- Linton Blvd

I-95 Mainline (South of Glades)

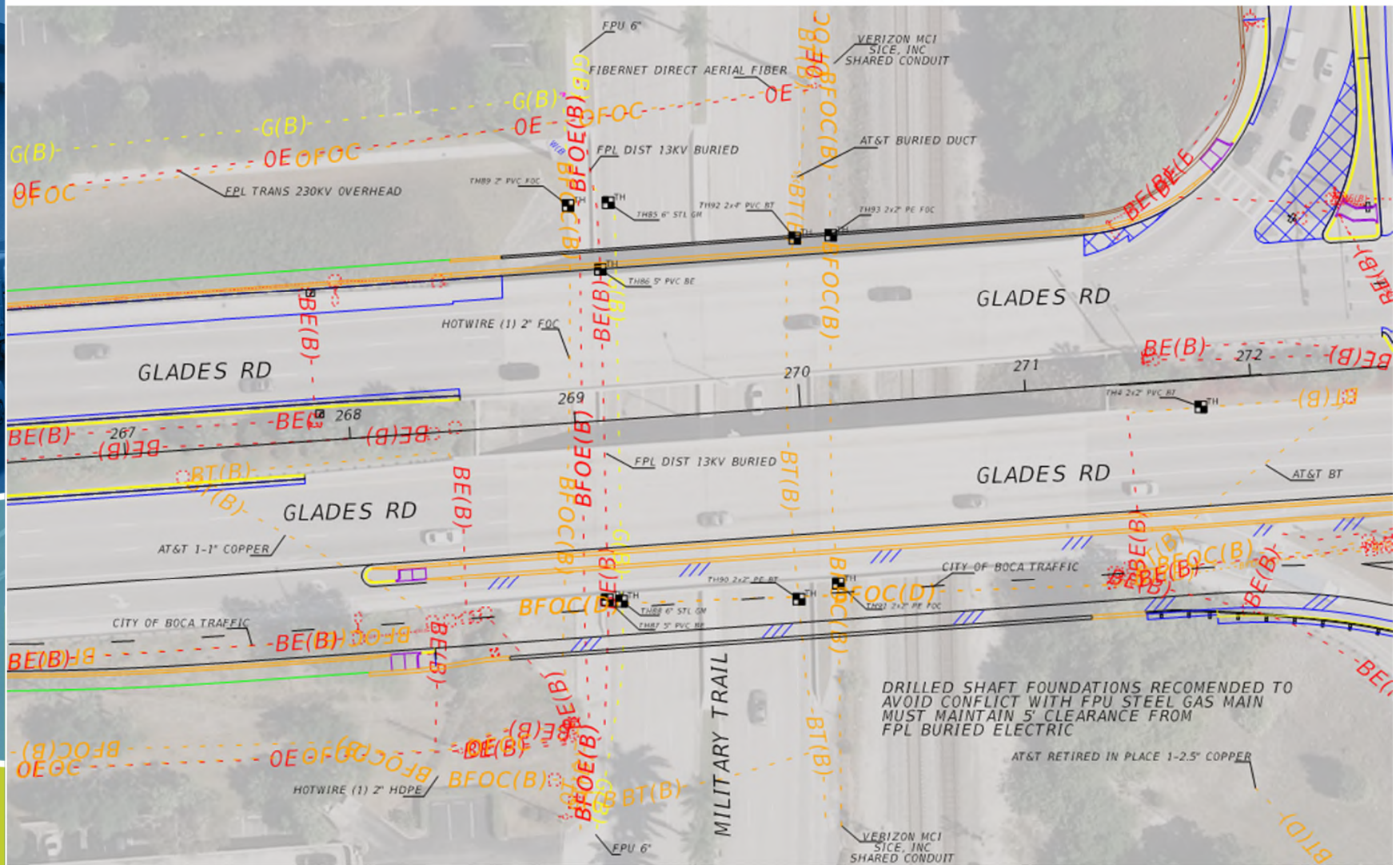
- FPU Gas Main
- FPL Transmission 138KV Overhead
- FPL Distribution
 - 7.6KV Overhead and Buried
- City of Boca Raton
 - 48" Force Main
 - 36" Force Main
 - 48" Water Main
 - 48" Raw Water Main



Glades Rd and Military Trail

- *FPL Distribution Buried*
- *FPU Gas Main*
- *FPL Transmission 230KV Overhead*
- *AT&T 1-1" Buried Copper*
- *Hotwire 2" HDPE Buried*
- *Fibernet Direct Aerial*
- *Verizon/MCI and Strome Networks within rail corridor*

Glades Rd and Military Trail



Slide 15

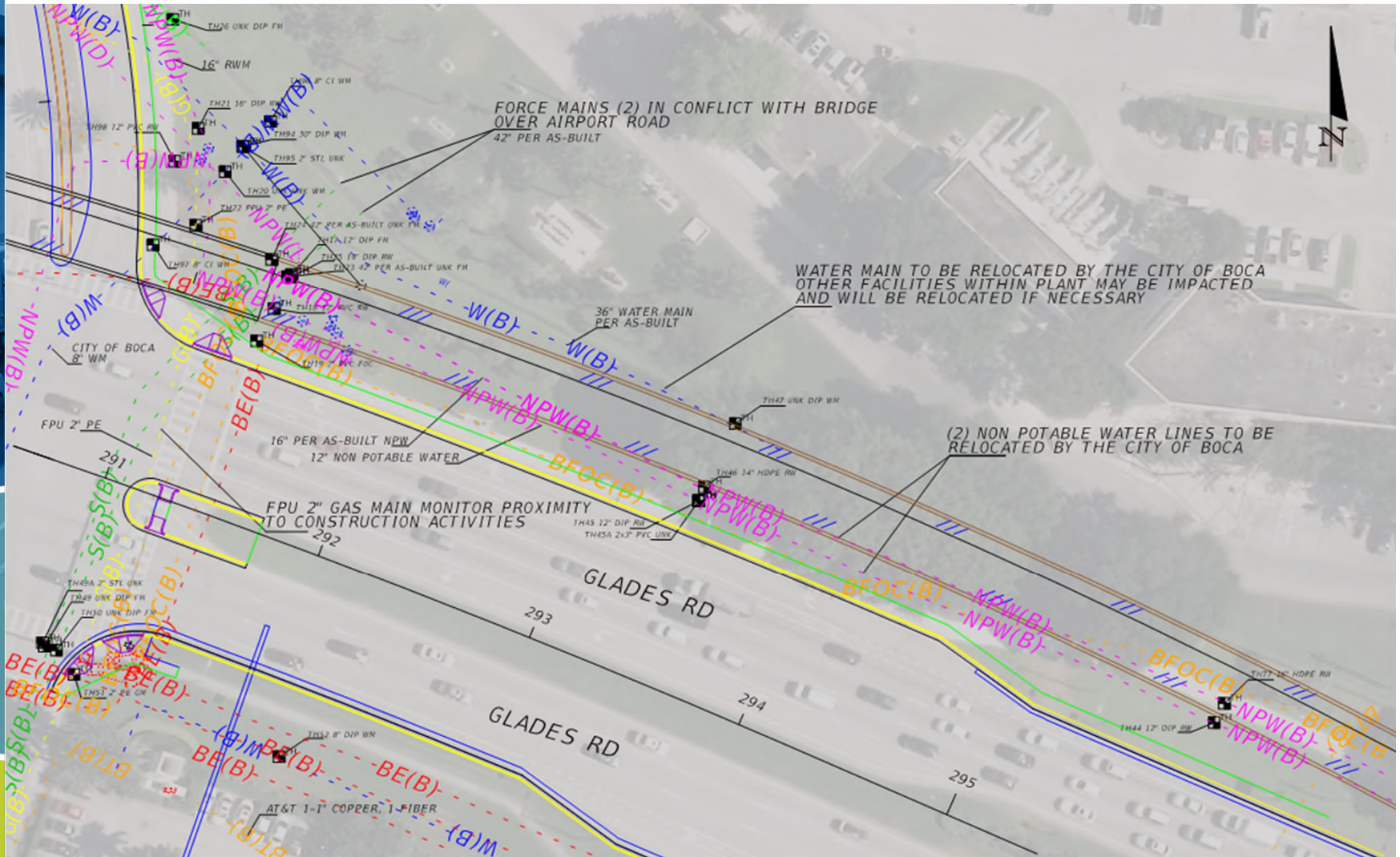
CR-P8 check for FPL Trans clearances on 230kv line
Conference Room - Pompano, 8/7/2018

RG1 20' clearance
Rebecca Green, 8/7/2018

Glades and Airport Rd

- FPU 2" Gas Main
- City of Boca Raton
 - (2) 42" Force Mains
 - 36" Water Main
 - 12" Reclaimed Water Main
 - 16" Reclaimed Water Main
 - 12" Reclaimed Water main
 - 8" Water Main
 - Other underground utility lines within property of Water Treatment Plant

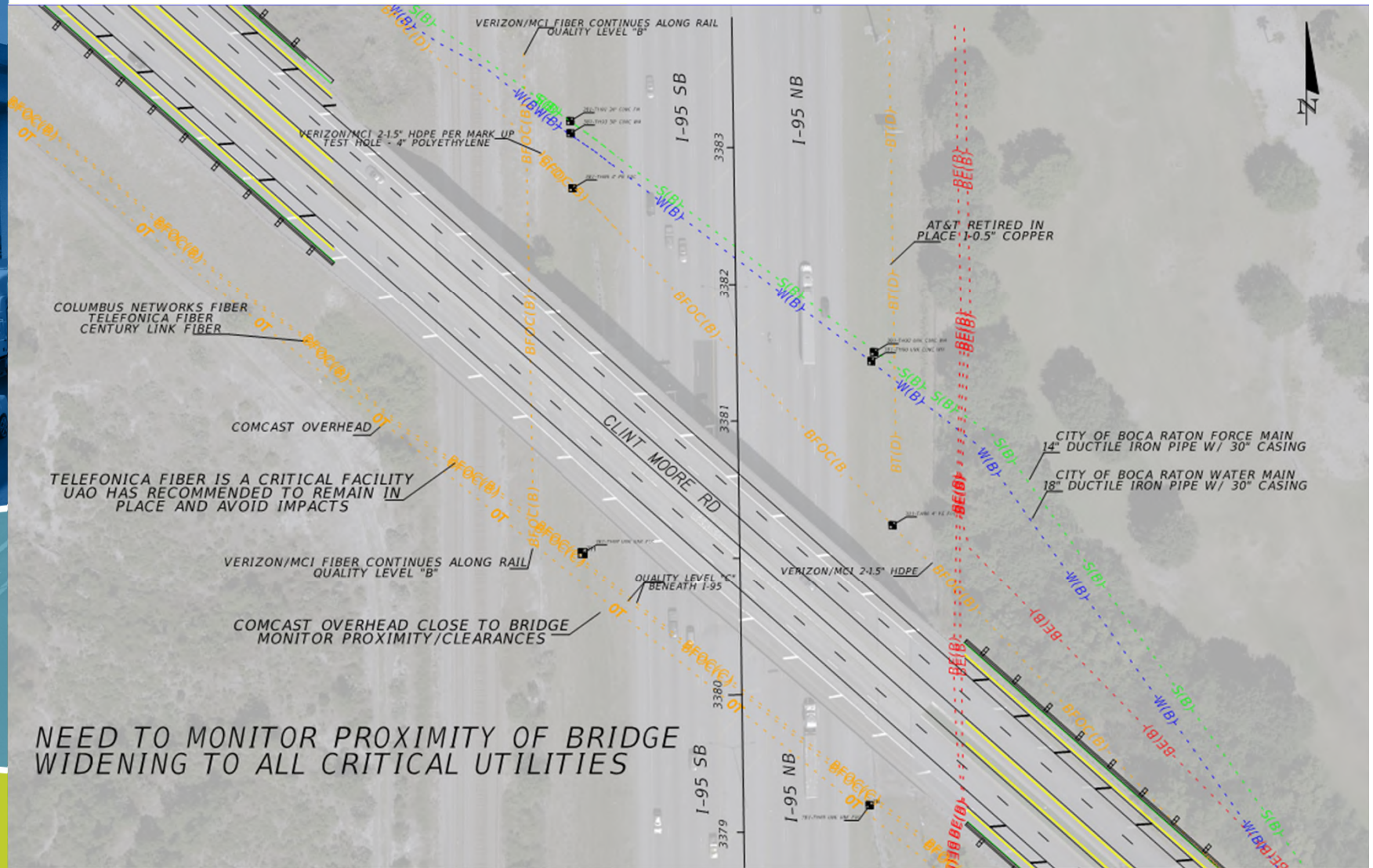
Glades and Airport Rd



I-95 and Clint Moore Rd

- *Comcast Overhead/Poles*
- FPL Distribution 7.6KV Buried
- Verizon/MCI Buried Fiber
- Century Link Buried
- Columbus Networks Buried Fiber
- Telefonica Buried Fiber
- City of Boca Raton
 - 14" Force Main
 - 18" Water Main

I-95 and Clint Moore Rd



NEED TO MONITOR PROXIMITY OF BRIDGE
WIDENING TO ALL CRITICAL UTILITIES

Slide 19

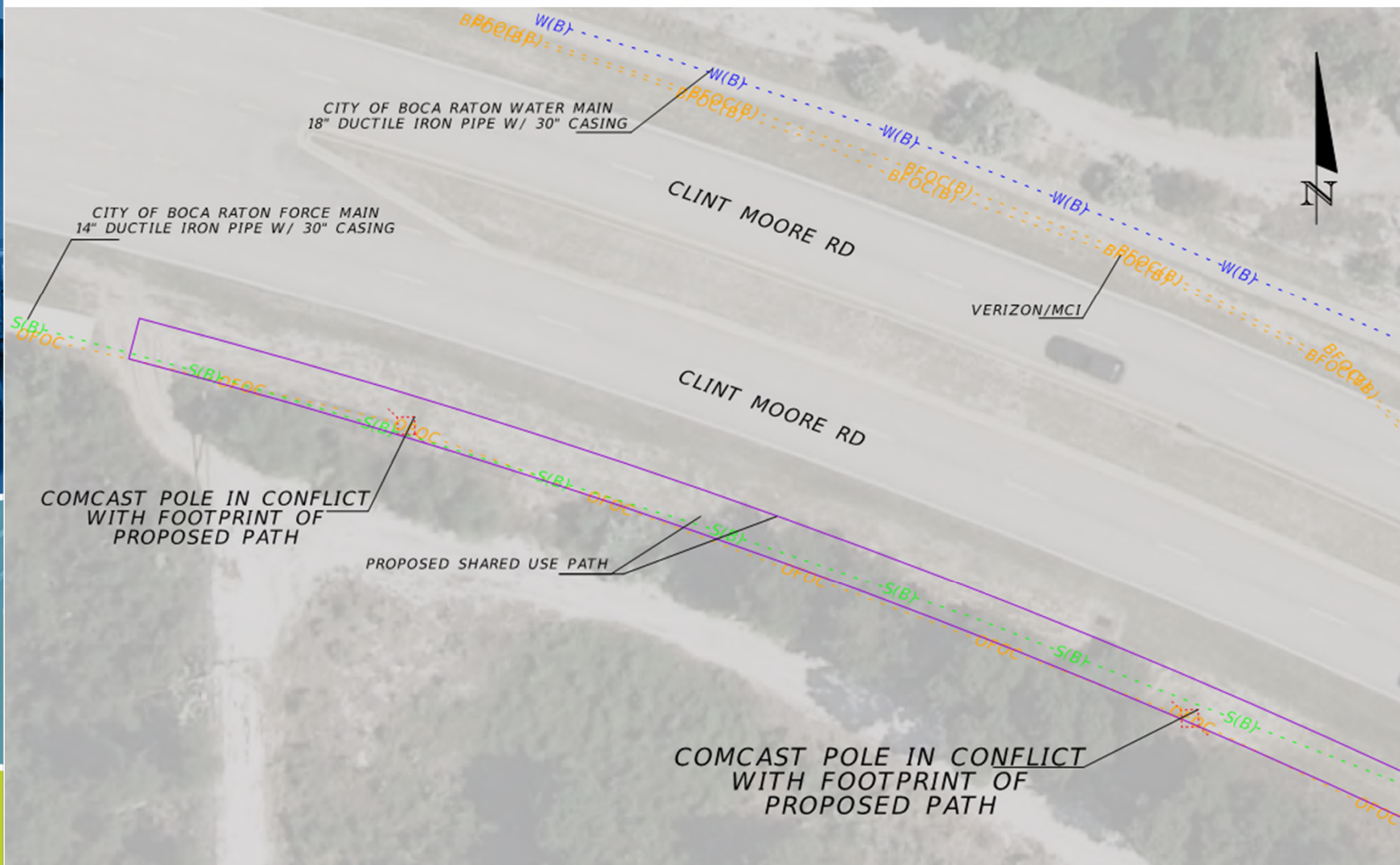
CR-P9

update statement - Telefonica critical facility. UAO has recommended to remain in place and avoid any impacts.

Conference Room - Pompano, 8/7/2018



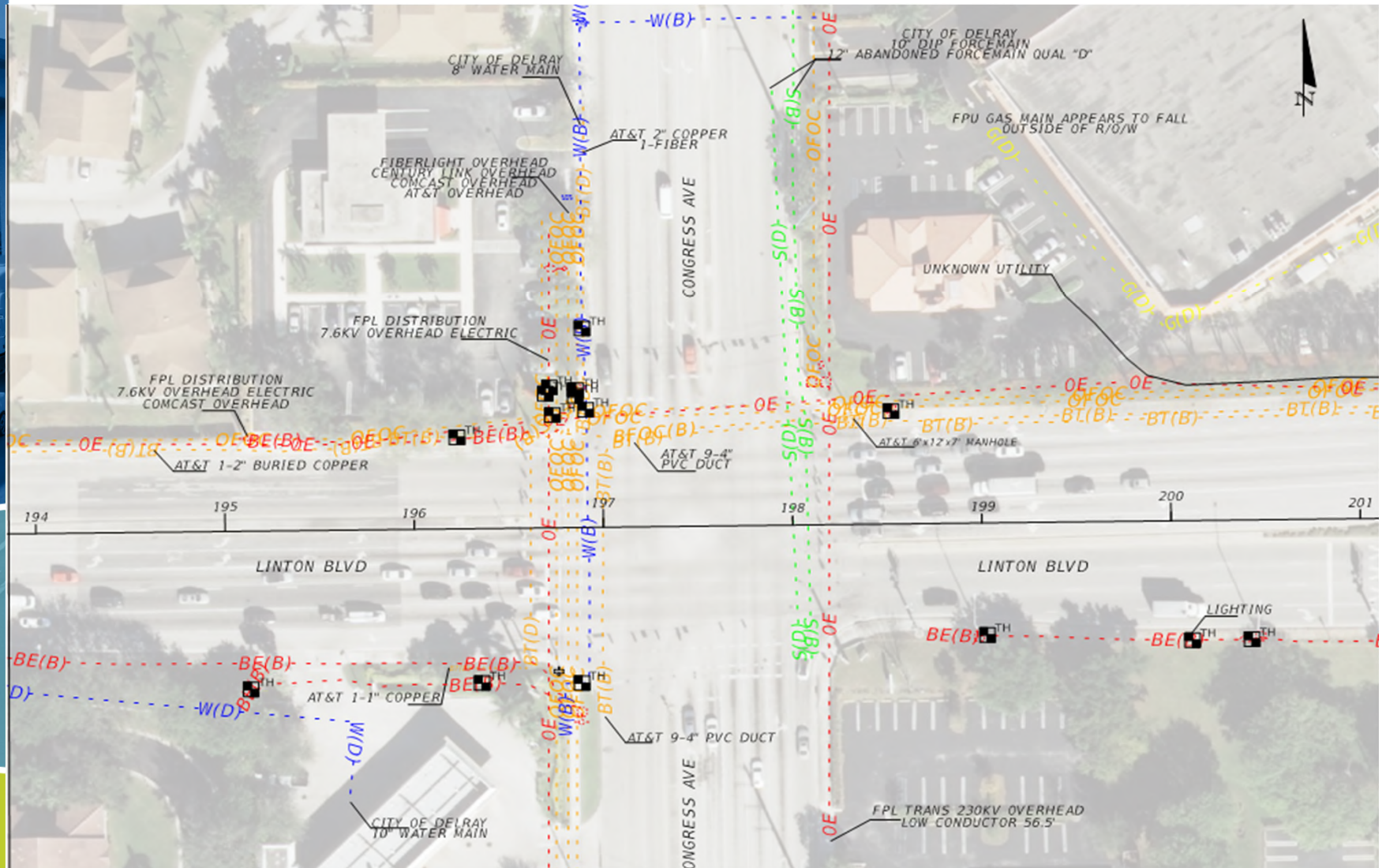
I-95 and Clint Moore Rd



Linton Blvd and Congress Ave (Bid Alternative 2)

- FPU Gas Main
- AT&T
 - 1-2" Buried Copper
 - 9-4" Duct (Associated Manhole)
 - 1-1" Copper
- City of Delray
 - 8" Water Main
 - 10" Force Main/12" Abandoned Force Main
- FPL Transmission 230KV Overhead
- FPL Distribution 7.6KV Overhead
- Fiberlight/Century Link/Comcast/AT&T Overhead

Linton Blvd and Congress Ave



Linton Blvd and SB I-95(Bid Alternative 2)

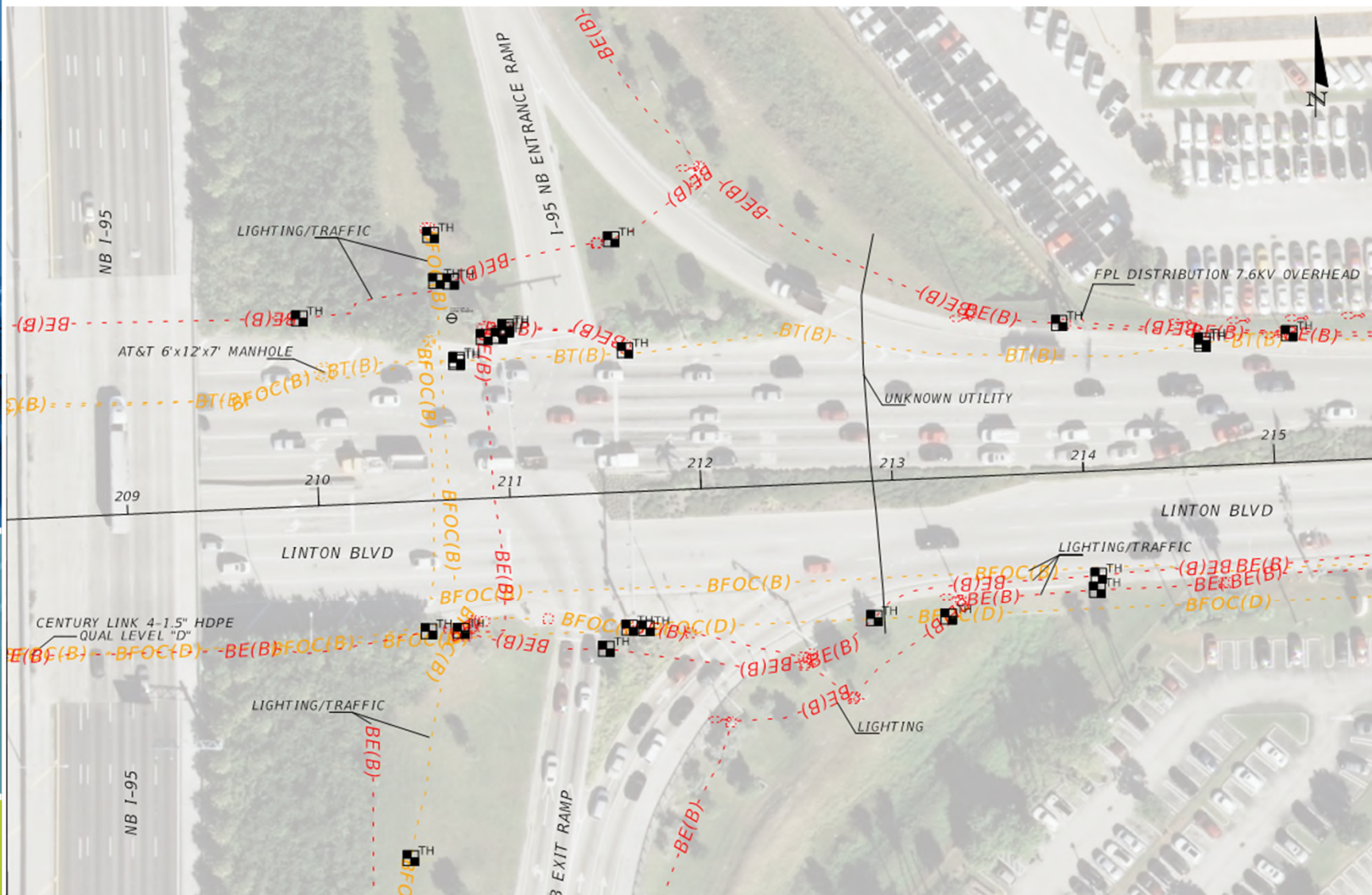
- *FPL Distribution 7.6KV Overhead*
- *FPL Transmission 138KV Overhead*
- *Fibernet Direct Overhead*
- *Verizon/MCI 2-2" HDPE*
- *Century Link 4-1.5" HDPE*
- *Comcast Buried Facilities*



Linton Blvd and NB I-95(Bid Alternative 3)

- *FPL Distribution 7.6KV Overhead*
- *Century Link 4-1.5" HDPE*
- *AT&T*
 - *9 x 4" Duct*
 - *6' x 12' x 7' Manhole*

Linton Blvd and NB I-95



Linton Blvd and Wallace Dr (Bid Alternative 3)

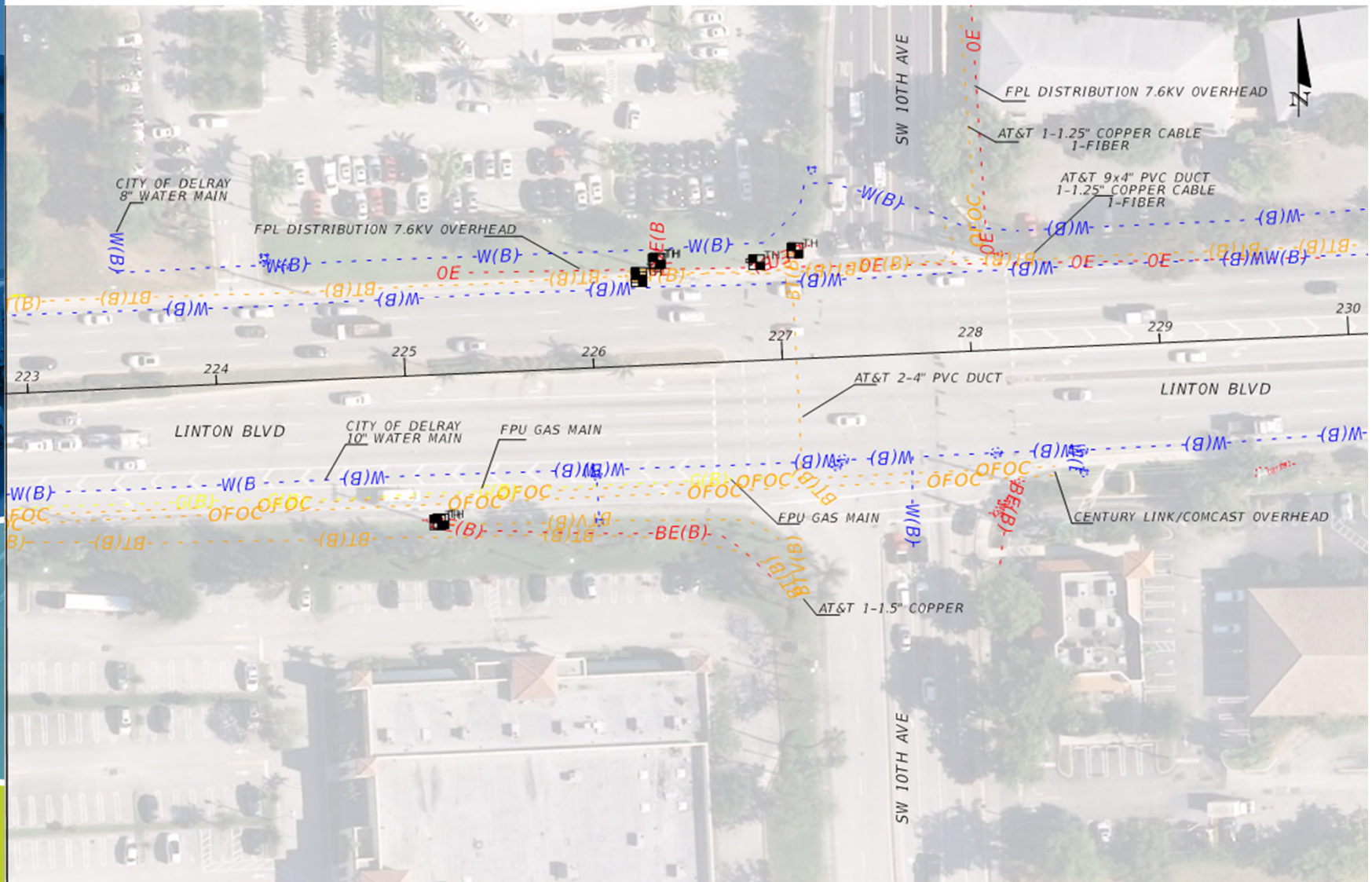
- *FPU Gas Main*
- *FPL Distribution 7.6KV Overhead/Underground*
- *Comcast Buried Fiber*
- *Century Link Underground to Overhead*
- *City of Delray 16" Water Main*
- *AT&T*
 - *1.5" Buried Copper*
 - *4-4" PVC Duct*
 - *9 x 4" PVC Duct and Associated Manhole*
 - *2" Buried Copper*
 - *3" Buried Copper*
 - *Cabinets/Pedestals*



Linton Blvd and SW 10th Ave (Bid Alternative 3)

- *FPU Gas Main*
- *FPL Distribution 7.6KV Overhead*
- *Century Link/Comcast Overhead*
- *AT&T*
 - *9 x 4" PVC Duct*
 - *1.25" Buried Copper*
- *City of Delray*
 - *8" Water Main*
 - *10" Water Main*

Linton Blvd and SW 10th Ave



Florida Power and Light Clearances

<u>*Power Line Voltages</u>	<u>Personnel and Equipment</u> (***29 CFR 1910.333 and 1926.600)	<u>Cranes and Derricks</u> (29 CFR 1926.1407, 1408)	<u>**Equipment, Crane & Derrick Travel under or near Power Lines</u> (29 CFR 1926.600 – Equipment) (1926.1411 – Cranes and Derricks)	
0 - 750 volts	10 Feet	10 Feet	4 Feet	4 Feet
751 - 50,000 volts	10 Feet	10 Feet	4 Feet	6 Feet
69,000 volts	11 Feet	15 Feet	10 Feet	10 Feet
115,000 volts	13 Feet	15 Feet	10 Feet	10 Feet
138,000 volts	13 Feet	15 Feet	10 Feet	10 Feet
230,000 volts	16 Feet	20 Feet	10 Feet	10 Feet
500,000 volts	25 Feet	25 Feet	16 Feet	16 Feet

***When uncertain of the voltage, maintain a distance of 20 feet for voltages up to 350,000 volts and 50 feet for voltages greater than 350,000 volts.**

****On Construction Sites, with no load.**

*****For personnel approaching insulated secondary conductors less than 750 volts, avoid contact.**

Preliminary Conflicts (Glades Rd)

Location	Utility Asset Name	Facility	Size	Approx. Station	Test Hole #	Potential Conflict	Notes
SEGMENT 3B-2 - Glades Rd							
GLADES RD	FLORIDA PUBLIC UTILITIES	4" STEEL	GAS MAIN	3200-25	3B1-46, 3B1-61	PROXIMITY TO CONSTRUCTION ACTIVITY	PROXIMITY TO CONSTRUCTION ACTIVITIES/PROPOSED RETAINING WALL/GUARD RAIL
	FPL TRANSMISSION	230KV	POLES/OVERHEAD ELECTRIC	250-50	N/A	PROXIMITY TO CONSTRUCTION ACTIVITY	PROXIMITY TO CONSTRUCTION ACTIVITY
	FPL DISTRIBUTION	15 KV	OVERHEAD ELECTRIC	250-50	N/A	PROXIMITY TO CONSTRUCTION ACTIVITY	PROXIMITY TO CONSTRUCTION ACTIVITY
	FIBERNET DIRECT	FIBER	OVERHEAD	250-50	N/A	PROXIMITY TO CONSTRUCTION ACTIVITY	PROXIMITY TO CONSTRUCTION ACTIVITY
	AT&T	BURIED TELEPHONE	DUCT BANK	3200-00	3B1-48, 3B1-53	PROXIMITY TO CONSTRUCTION ACTIVITY	PROXIMITY TO CONSTRUCTION ACTIVITIES/PROPOSED RETAINING WALL/GUARD RAIL
	FPL DISTRIBUTION	15KV	OVERHEAD ELECTRIC	3198-25	N/A	PROXIMITY TO CONSTRUCTION ACTIVITY	PROXIMITY TO CONSTRUCTION ACTIVITIES/PROPOSED RETAINING WALL/GUARD RAIL
	FPL DISTRIBUTION	15KV	BURIED ELECTRIC	3198-25	3B1-TH50, 3B1-TH57	PROXIMITY TO CONSTRUCTION ACTIVITY/GUARD RAIL	PROXIMITY TO CONSTRUCTION ACTIVITIES/PROPOSED RETAINING WALL/GUARD RAIL
	FPL TRANSMISSION	158KV	OVERHEAD ELECTRIC	3198-50	N/A	PROXIMITY TO CONSTRUCTION ACTIVITY/GUARD RAIL	PROXIMITY TO CONSTRUCTION ACTIVITIES/PROPOSED RETAINING WALL/GUARD RAIL
	CITY OF BOCA RATON	36" W/ STEEL CASING	FORCE MAIN	3198-50	3B1-TH44, 3B1-TH52	PROXIMITY TO CONSTRUCTION ACTIVITY/GUARD RAIL	PROXIMITY TO CONSTRUCTION ACTIVITIES/PROPOSED RETAINING WALL/GUARD RAIL
	CITY OF BOCA RATON	48" W/ STEEL CASING	FORCE MAIN	3198-50	3B1-TH42, 3B1-TH44	PROXIMITY TO CONSTRUCTION ACTIVITY/GUARD RAIL	PROXIMITY TO CONSTRUCTION ACTIVITIES/PROPOSED RETAINING WALL/GUARD RAIL
	CITY OF BOCA RATON	48" W/ STEEL CASING	WATER MAIN	3198-50	3B1-TH40, 3B1-TH55	PROXIMITY TO CONSTRUCTION ACTIVITY/GUARD RAIL	PROXIMITY TO CONSTRUCTION ACTIVITIES/PROPOSED RETAINING WALL/GUARD RAIL
	CITY OF BOCA RATON	48" W/ STEEL CASING	NON-POTABLE WATER	3198-50	3B1-TH38, 3B1-TH55	PROXIMITY TO CONSTRUCTION ACTIVITY/GUARD RAIL	PROXIMITY TO CONSTRUCTION ACTIVITIES/PROPOSED RETAINING WALL/GUARD RAIL
	CITY OF BOCA RATON	48"	RAW WATER	3230-00	3B1-TH10, 3B1-TH33	PROXIMITY TO CONSTRUCTION ACTIVITY/GUARD RAIL	PROXIMITY TO CONSTRUCTION ACTIVITIES/PROPOSED RETAINING WALL/GUARD RAIL
	CITY OF BOCA RATON	36"	WATER MAIN	3230-00	3B1-TH66, 3B1-TH87	PROXIMITY TO CONSTRUCTION ACTIVITY/GUARD RAIL	PROXIMITY TO CONSTRUCTION ACTIVITIES/PROPOSED RETAINING WALL/GUARD RAIL
	CITY OF BOCA RATON	30"	FORCE MAIN	3230-01	3B1-TH68, 3B1-TH85	PROXIMITY TO CONSTRUCTION ACTIVITY/GUARD RAIL	PROXIMITY TO CONSTRUCTION ACTIVITIES/PROPOSED RETAINING WALL/GUARD RAIL
RENAISSANCE WAY	AT&T DISTRIBUTION	1-2" COPPER/FIBER	BURIED	253-30	TH4, TH5, TH3, TH10, TH11, TH13, TH14	PROXIMITY TO CONSTRUCTION ACTIVITY	PROXIMITY TO PROPOSED SIGNAGE
	FIBERNET DIRECT	FIBER	BURIED	253-30	TH3, TH6, TH8	PROXIMITY TO CONSTRUCTION ACTIVITY	PROXIMITY TO PROPOSED SIGNAGE
	FIBERNET DIRECT	FIBER	OVERHEAD	253-30	N/A	PROXIMITY TO CONSTRUCTION ACTIVITY	PROXIMITY TO PROPOSED SIGNAGE
	FPL TRANSMISSION	230KV	OVERHEAD ELECTRIC	253-30	N/A	PROXIMITY TO CONSTRUCTION ACTIVITY	PROXIMITY TO PROPOSED SIGNAGE
MILITARY TR	FLORIDA PUBLIC UTILITIES	6" STEEL	GAS MAIN	268-30	TH85, TH88	PROPOSED BRIDGE WIDENING	PROXIMITY TO CONSTRUCTION ACTIVITY/BRIDGE WIDENING - DRILLED SHAFT FOUNDATIONS RECOMMENDED
	NOTWIRE	2" HDPE	FIBER	263-30	TH83	PROPOSED BRIDGE WIDENING	PROXIMITY TO CONSTRUCTION ACTIVITY
	VERIZON/STROMER NETWORK'S SHARED CONDUIT	FIBER	BURIED	270-50	TH91, TH93	PROPOSED BRIDGE WIDENING	RUNS NORTH/SOUTH ALONG RAIL RIGHT OF WAY/PROXIMITY TO BRIDGE WIDENING
	AT&T DISTRIBUTION	1-2" COPPER	BURIED	264-50 - 270-00	N/A	PROPOSED BRIDGE WIDENING	RUNS NORTH/SOUTH ALONG MILITARY TRAIL/PROXIMITY TO BRIDGE WIDENING
	AT&T DISTRIBUTION	2-2" PE	BURIED TELEPHONE	270-00	TH90, TH 92	PROPOSED BRIDGE WIDENING	RUNS NORTH/SOUTH ALONG MILITARY TRAIL/PROXIMITY TO BRIDGE WIDENING
	FPL DISTRIBUTION	15KV	BURIED ELECTRIC	263-05	TH96, TH97	PROPOSED BRIDGE WIDENING	RUNS NORTH/SOUTH ALONG MILITARY TRAIL/PROXIMITY TO BRIDGE WIDENING - MUST MAINTAIN 5' CLEARANCE
AIRPORT RD	FPL TRANSMISSION	230KV	OVERHEAD ELECTRIC	265-00 - 270-00	N/A	PROPOSED BRIDGE WIDENING	FALLS NORTH OF GLADES RUNNING EAST/WEST ACROSS CONGRESS, MUST MONITOR CLEARANCES
	CITY OF BOCA RATON	16" HDPE	RAW WATER	230-00 - 300-00	FER TO "3B2-SBYNG"	RIGHT OF WAY ACQUISITION	DISCUSSED AT MEETING WITH CITY OF BOCA TO RELOCATE DUE TO NEW RIGHT OF WAY ACQUISITION BY FDOT/PROPOSED BRIDGE
	CITY OF BOCA RATON	12" DIP	RAW WATER	230-00 - 300-00	FER TO "3B2-SBYNG"	RIGHT OF WAY ACQUISITION	DISCUSSED AT MEETING WITH CITY OF BOCA TO RELOCATE DUE TO NEW RIGHT OF WAY ACQUISITION BY FDOT/PROPOSED BRIDGE
	CITY OF BOCA RATON	36" DIP	WATER MAIN	230-00 - 300-00	FER TO "3B2-SBYNG"	RIGHT OF WAY ACQUISITION	DISCUSSED AT MEETING WITH CITY OF BOCA TO RELOCATE DUE TO NEW RIGHT OF WAY ACQUISITION BY FDOT/PROPOSED BRIDGE
	FLORIDA PUBLIC UTILITIES	2"	GAS MAIN	231-25	TH22, TH28, TH33, TH34, TH51, TH58	PROPOSED BRIDGE	PROXIMITY TO PROPOSED BRIDGE OVER AIRPORT ROAD
	CITY OF BOCA RATON	42"	FORCE MAINS (2)	231-25	TH17, TH23, TH24, TH43, TH59	PROPOSED BRIDGE	PROXIMITY TO PROPOSED BRIDGE OVER AIRPORT ROAD
OTHER	CITY OF BOCA RATON	8"	WATER MAIN	236-50	TH20, TH57, TH36, TH5	PROPOSED BRIDGE	PROXIMITY TO PROPOSED BRIDGE OVER AIRPORT ROAD
	CITY OF BOCA RATON	MULTIPLE	INSIDE PLANT	N/A	N/A	RIGHT OF WAY ACQUISITION	MULTIPLE LINES WITHIN THE CITY OF BOCA'S WATER PLANT TO BE RELOCATED DUE TO RIGHT OF WAY ACQUISITION
	CITY OF BOCA RATON TRAFFIC	MULTIPLE	PULL BOXES/PEDESTALS/MAST ARMS/CABINETS/BURIED FIBER	VARIES	N/A	PROXIMITY TO CONSTRUCTION ACTIVITIES	MULTIPLE ABOVE GROUND FEATURES/BURIED FACILITIES THAT MAY BE IN CONFLICT WITH PROPOSED IMPROVEMENTS - NEED TO CLOSELY COORDINATE WITH BOCA TRAFFIC

95 EXPRESS PHASE 3

Broward & Palm Beach Counties