



## *Florida Department of Transportation*

RON DESANTIS  
GOVERNOR

3400 West Commercial Boulevard  
Fort Lauderdale, FL 33309

JARED W. PERDUE, P.E.  
SECRETARY

June 20, 2025

**RE: ADDENDUM TWO**

Contract E4X99, FM **432917-2-72-01**

Asset Maintenance contracts for all the roadway sections and subsections of state road corridors outlined in the table below of I-95, in Martin, St. Lucie, and Indian River Counties. The limits also include 4 Rest Areas (2 in Martin County and 2 in St. Lucie County) and 2 Weigh-In-Motion Stations (in Martin County).

Dear Bidders:

This addendum includes the following changes:

### **1) SCOPE OF SERVICES**

- a) Scope of Services – Section 4.5 - NPDES/MS4/Environmental Resource Permit Maintenance is replaced revising inspections.

#### **4.5 NPDES/MS4/ENVIRONMENTAL RESOURCE PERMIT MAINTENANCE**

Comply with all applicable requirements of the National Pollution Discharge Elimination System (NPDES) Municipal Separate Storm Sewer System (MS4) permits and Environmental Resource Permits (ERPs) and as specified in the permit documents and FDOT Statewide Stormwater Management Program.

Under current National Pollution Discharge Elimination System (NPDES) Municipal Separate Storm Sewer System (MS4) program and the local Water Management District (WMD) Environmental Resource Permit (ERP) program, all Stormwater management systems are inspected by the Department and Water Management District. The completion of all work to address deficiencies identified during those inspections are included in the Contractor's lump-sum bid price; no additional payment will be made for any maintenance activities associated with inspections.

The Contractor will be responsible for all corrective activities identified; and the Department will be responsible for all engineering related corrective actions. The Contractor will be responsible for documentation and closure of the corrective activities in the appropriate application.

The Contractor's responsibilities include but are not limited to: removing obstructions, trash, debris, and nuisance vegetation in and around water control structures, inlets, ponds, and outfalls; removing of sediment and debris from surface water or storm water management basins, scarifying retention basins and swales, back flushing filtration systems or replacing clogged filter sand/filter fabric with new filter sand/filter fabric, maintaining the integrity of control and conveyance structures, ditch block reconstruction, erosion stabilization, maintaining proper vegetative cover and maintaining the pond fence and gate.

| <b>NPDES, MS4, and Environmental Resource Permits</b>             |  |  |
|---|--|--|
| Deficiency Identification   | Time Allowed/Criteria                                  | Deduction  |
| b) Failure to complete and close identified deficiencies on time. | Per due date established or 45 days, whichever is less | \$1,000 per instance plus \$500 per day until completed. |

- b) Scope of Services – Section 4.20 - Structural Protective/Decorative Coating Materials is replaced removing inspection requirement.

#### **4.20 STRUCTURAL PROTECTIVE/DECORATIVE COATING MATERIALS**

Notify the DSME of a structure with a failed coating system, or with section loss equal to or greater than 1/16th inch, covering 15 percent of the surface area, so the structure can be considered for a full recoating project in the five-year Work Program.

Failed Coating Systems are defined as follows:

- Failed coating system for Steel and Aluminum Element is defined as:
  - Corrosion (1000) in CS2 or greater
  - Peeling, Bubbling, Cracking (3420) in CS2 or greater

- Oxide Film Degradation Color, Texture Adherence (3430) in CS2 or greater
- Effectiveness-Steel Protective Coatings (3440) in CS3 or greater
- Failed coating system for Concrete Element is defined as:
  - Wear-Concrete Protective Coatings (3510) in CS2 or greater
  - Effectiveness-Concrete Protective Coating (3540) in CS3 or greater
  - Class V Finish – Peeling and Bubbling of the coating

Maintain the coating system by performing routine maintenance in accordance with Standard Specification Section 975 to address failed coating systems not scheduled for recoating. Examples of coating systems include but are not limited to; concrete coatings (class V, paint, anti-graffiti, etc.), steel coatings (galvanizing, paint, metalizing, etc.), aluminum coatings (paint, etc.).

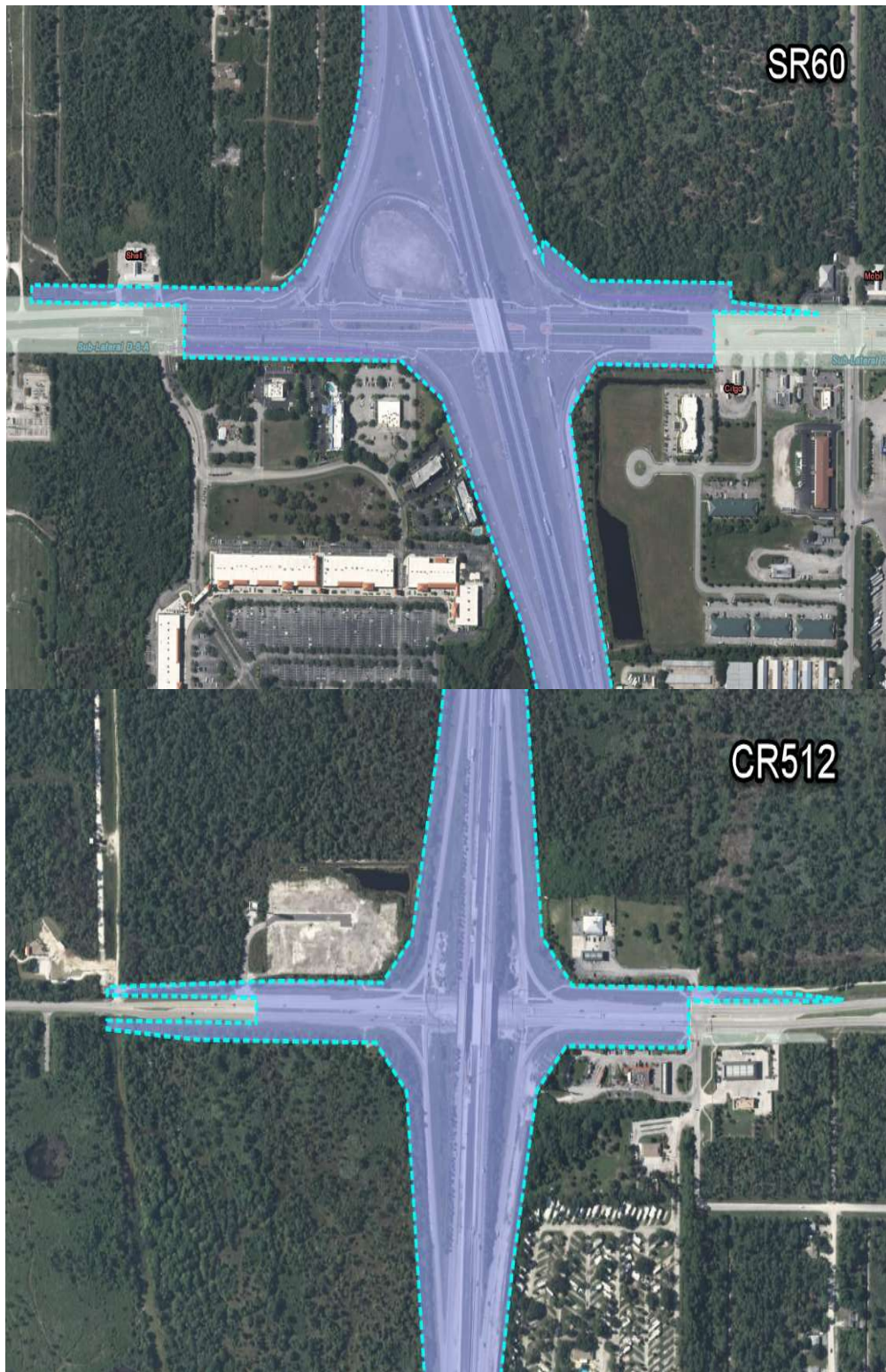
#### **PERFORMANCE CRITERIA MAINTENANCE OF STRUCTURAL COATING MATERIALS**

| <b>Deficiency</b>   | <b>Identification Time Allowed/Criteria</b> | <b>Deduction</b>                                    |
|---|---|---|
| b) Failure to match paint color.                            | Immediately upon identification             | \$500 per day from notice of failure until remedied |
| Failure to notify the Department of a failed coating system | Immediately upon identification             | \$500 per day from notice of failure                |

- c) Scope of Services – Section 4.22 – Interchange Limited Access Maps is replaced

## 4.22 Interchange Limited Access Maps

### I-95 Indian River County Limited Access





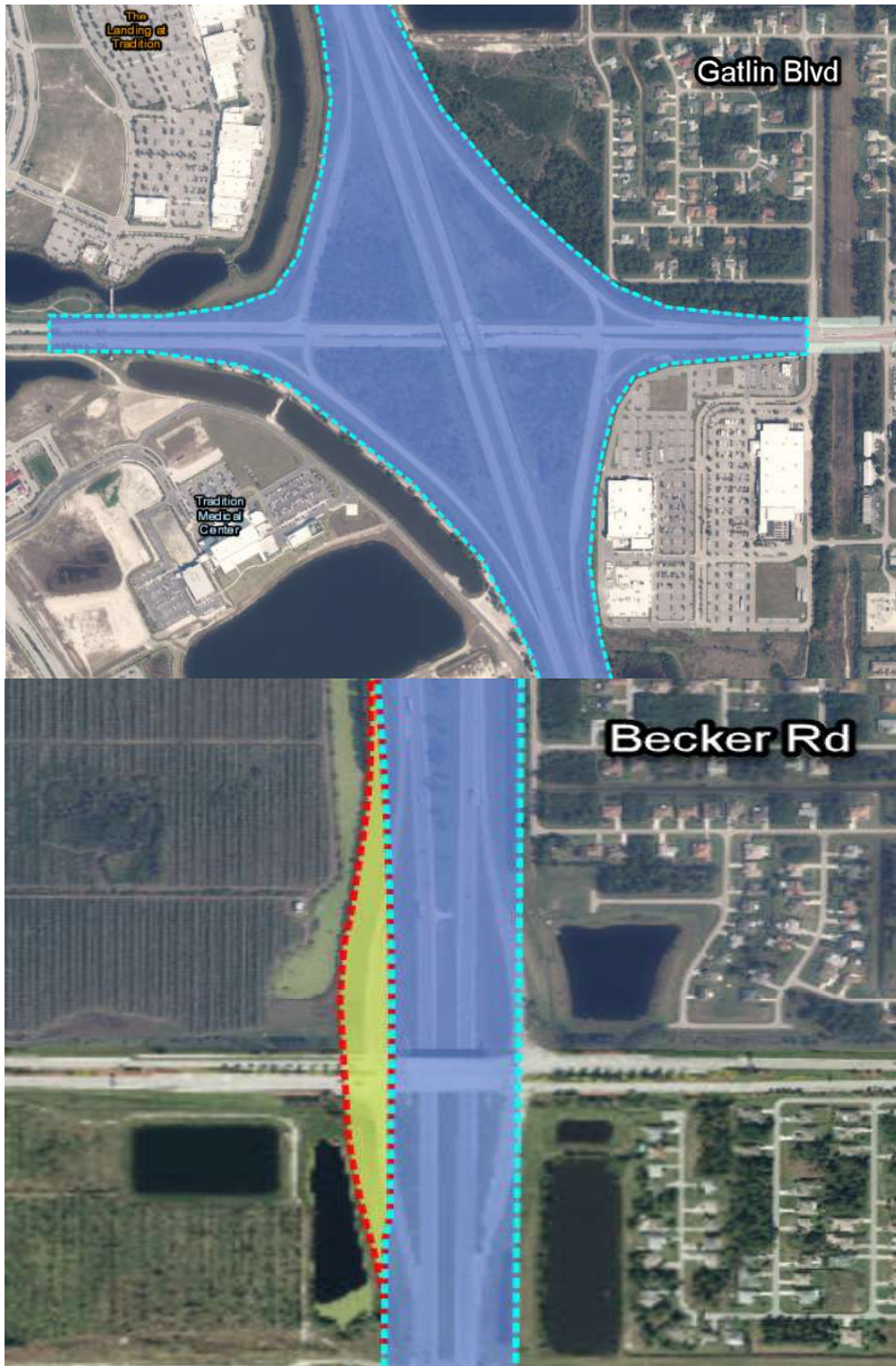
I-95 St. Lucie County Limited Access













I-95 Martin County Limited Access





## 2.REPLACE PRICE PROPOSAL PACKAGE

You can download the Price Proposal Package for the subject Project in the link below:

[District Four Asset Maintenance Contracts](#)

You must acknowledge receipt of this **Addendum Two** when you submit your bid.

[Maria Velarde](#)

for Margaret Simpkins

District 4, District Contract Administrator

Copy: Daniel Gonzalez, John Deemer, File.

Bidders must acknowledge receipt of this document by completing and returning to the Procurement Office with their Bid via email at [D4.designbuild@dot.state.fl.us](mailto:D4.designbuild@dot.state.fl.us) , by no later than the time and date of the proposal due. Failure to do so may subject the Bidder to disqualification.

\_\_\_\_\_Bidder

\_\_\_\_\_Address

\_\_\_\_\_Name

\_\_\_\_\_Submitted by (Signature