



Florida Department of Transportation

RON DESANTIS
GOVERNOR

1074 Hwy 90
Chipley, Florida 32428

KEVIN J. THIBAUT, P.E.
SECRETARY

May 27, 2020

ADDENDUM NO. 1

To: ALL PROPOSAL HOLDERS
FINANCIAL ITEM NUMBER: 42214227295
CONTRACT NUMBER: E3T95
DESCRIPTION: Wildlife Fence Replacement & Tree Removal along I-10 in Santa Rosa County.

BIDS TO BE RECEIVED: June 11, 2020

If you are a PROPOSAL HOLDER, this is your authorization to make the following changes to the plans and specification packages you now have for the subject project:

- **The following revisions have been made to the Specifications Package.**
- **The Intent and Scope is deleted and replaced with page 2 of Addendum No. 1**
- **The following attachment has been added - I-10 Fire Damage Assessment & Tree Removal Limits pages 3 to 15 of Addendum No. 1.**

Please use this revision when preparing your bid.

Sealed bids will be received until 2:00 p.m. local time on June 11, 2020 in the District Three Procurement Services Conference Room, Room 230, Administration Building, 1074 Highway 90, Chipley, Florida.

AMENDMENT NOTIFICATION

If you are a PROPOSAL HOLDER, please go to the CPP Online Ordering System at <https://fdotwp1.dot.state.fl.us/contractproposalprocessingonlineordering/> to download Amendment No. 1, file E3T95.001.

Also all PROPOSAL HOLDERS please acknowledge receipt of the addendum under the Acknowledgement of Amendments tab on your electronic bid.

If you have any further questions please contact Roland Ybarra by phone at (850) 330-1364 or by email at roland.ybarra@dot.state.fl.us.

Sincerely,

Roland Ybarra
District Contracts Administrator

c.c. Tim Hendrix, Heath Riley, Richard Yates, Jared Kirkland, file

May 26, 2020

ADDENDUM NO. 1

To the: Specifications Package

For: Contract No.: E3T95
FP ID: 422142-2-72-95
Description: Wildlife Fence Replacement & Tree Removal along I-10
County: Santa Rosa

Specifications Package:

The following revisions are made to the Specifications Package:

- **Pages 1 & 7:** The Intent & Scope is deleted and replaced by the following:

Intent and Scope: The work under this Site-Specific Lump Sum Contract consists of the removal and replacement of existing wildlife fence along the SR 8 (Interstate 10) right-of-way line, both eastbound and westbound, in Santa Rosa County due to damage from recent wildfires. Work limits extend from Mile Marker 23.400 to Mile Marker 25.000, include installing wildlife fence at all culverts, and new fence construction (including all fence components) shall be in accordance with the two-page fence detail included in the attachments. Other work associated with this contract includes the removal and disposal of fire damaged trees as detailed within the 'I-10 Fire Damage Assessment & Tree Removal Limits' attachment. Trees shall only be removed between the designated Begin Removal and End Removal locations, and stump grinding is required for all trees removed. **Removal of all fire damaged trees, as well as all stump grinding, will be considered incidental to the work being completed. Mobilization and Maintenance of Traffic are incidental to this contract.**

Signed: 
Chad A. Williams, P.E.

Date: 5-26-2020



FP ID: 422142-2-72-95

Contract No.: E3T95

**I-10 FIRE DAMAGE ASSESSMENT
& TREE REMOVAL LIMITS**

SANTA ROSA COUNTY

MAY 26, 2020



**INTERSTATE 10 FIRE DAMAGE ASSESSMENT &
TREE REMOVAL LIMITS**

TABLE OF CONTENTS

COVER SHEET i
TABLE OF CONTENTS. ii
TREE REMOVAL LIMITS SUMMARY 1
I-10 WESTBOUND ZONES. 2-8
I-10 EASTBOUND ZONES. 9-11

FP ID: 422142-2-72-95
 TREE REMOVAL LIMITS

I-10 Westbound			
	Letter	Latitude	Longitude
Begin Removal	A	30.55826944	-87.04685
TO REMAIN	SABAL	30.55685833	-87.04871944
End Removal	B	30.55638889	-87.04926389
Begin Removal	C	30.555925	-87.04988056
End Removal	D	30.55556111	-87.05033611
Begin Removal	E	30.55530278	-87.05073222
End Removal	F	30.55152778	-87.05561111
Begin Removal	G	30.55107778	-87.05615833
End Removal	H	30.55045556	-87.05698056
Begin Removal	I	30.54981111	-87.05780833
End Removal	J	30.54969444	-87.05795833
Begin Removal	K	30.54958056	-87.0581
End Removal	L	30.548675	-87.05927222
Begin Removal	M	30.54837778	-87.059675
End Removal	N	30.54798889	-87.06016111
I-10 Eastbound			
	Letter	Latitude	Longitude
Begin Removal	A	30.55048333	-87.05638889
End Removal	B	30.55061278	-87.05621111
Begin Removal	C	30.55151667	-87.05503333
End Removal	D	30.55193889	-87.05447778
Begin Removal	E	30.55226944	-87.05405278
End Removal	F	30.55275556	-87.05341111



POINT A LOCATION: 30.5582694444, -87.04685

POINT S: SABAL PALM TO BE PROTECTED: 30.5568583333, -87.0487194444 POINT B

LOCATION: 30.5563888889, -87.0492638889



POINT A



SABAL PALM TO BE PROTECTED



POINT B



**I-10 FIRE DAMAGE
ASSESSMENT**

**WESTBOUND
A TO B**

2



POINT C LOCATION: 30.555925, -87.0498805556
POINT D LOCATION: 30.5555611111, -87.0503361111



POINT C



POINT D



**I-10 FIRE DAMAGE
ASSESSMENT**

**WESTBOUND C
TO D**

3



POINT E LOCATION: 30.5553027778,
 POINT F LOCATION: 30.5515277778,

-87.0507322222
 -87.0556111111



POINT E



POINT F



POINT G LOCATION: 30.5510777778, -87.0561583333

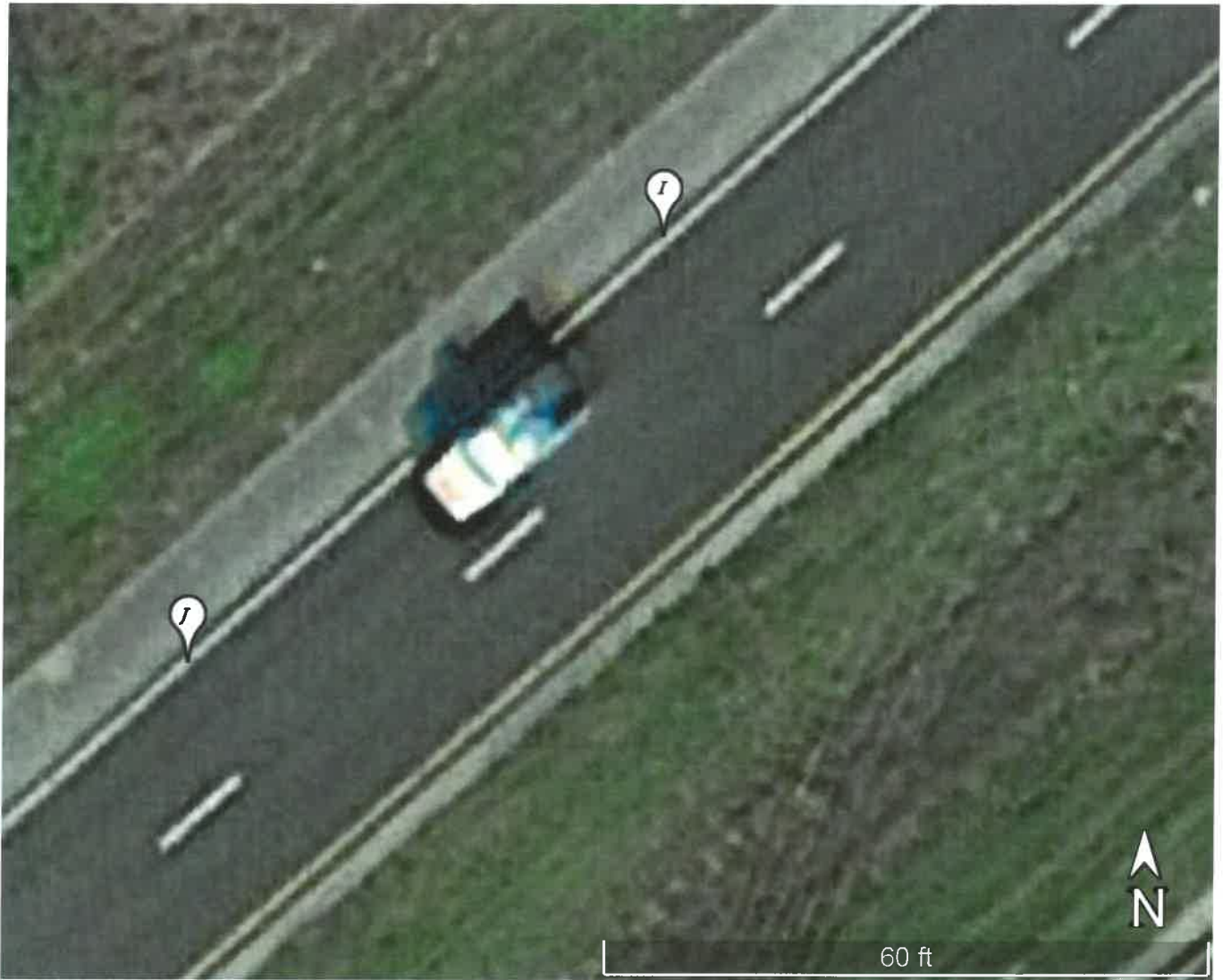
POINT H LOCATION: 30.5504555556, -87.0569805556



POINT G



POINT H



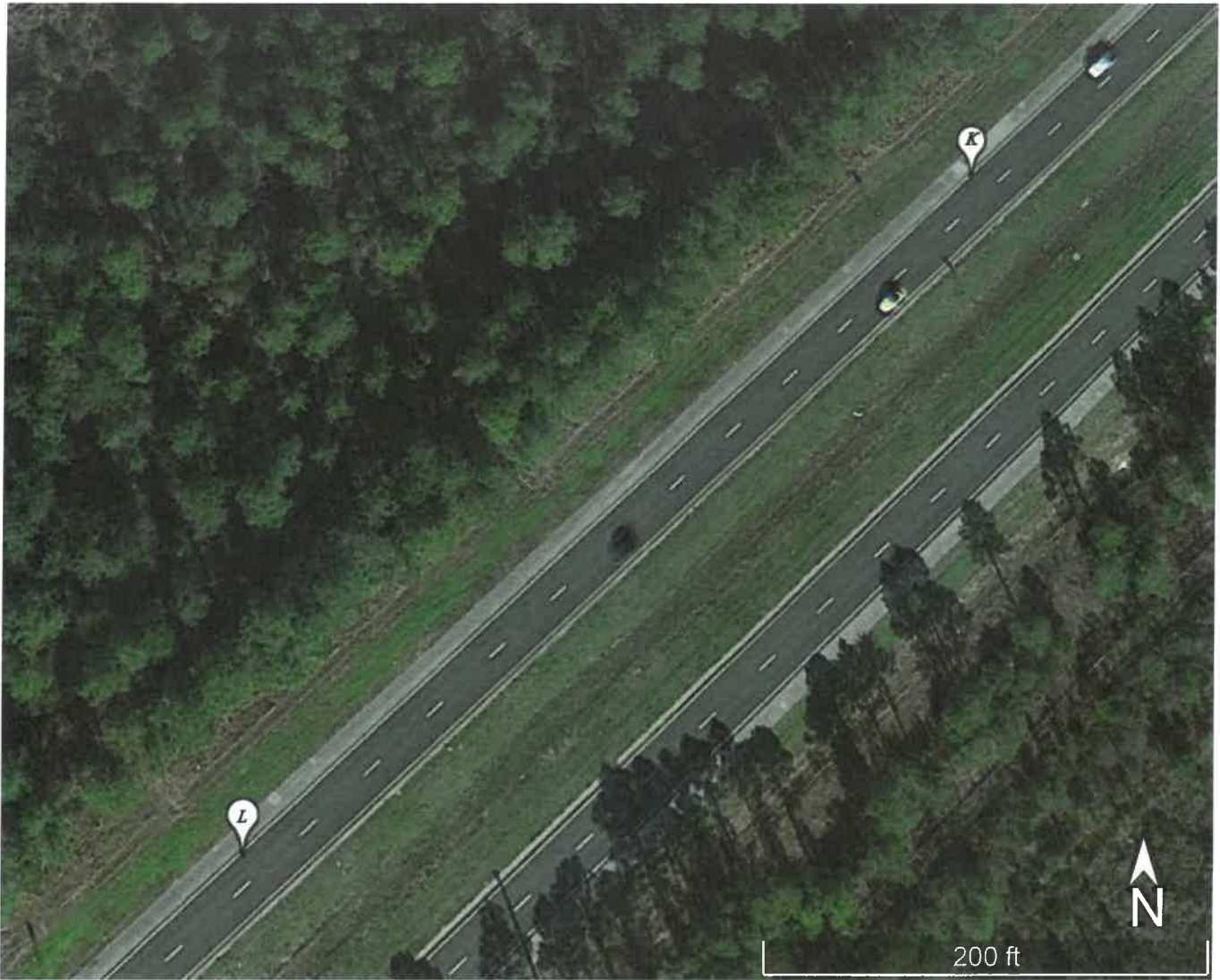
POINT I LOCATION: 30.5498111111, -87.0578083333
 POINT J LOCATION: 30.5496944444, -87.0579583333



POINT I



POINT J



POINT K LOCATION: 30.5495805556, -87.0581
 POINT L LOCATION: 30.548675, -87.0592722222



POINT K



POINT L



POINT M LOCATION: 30.5483777778, -87.059675
 POINT N LOCATION: 30.5479888889, -87.0601611111



POINT M



POINT N



POINT A LOCATION: 30.5504833333, -87.0563888889

POINT B LOCATION: 30.5506127778, -87.0562111111



POINT A



POINT B



POINT C LOCATION: 30.5515166667, -87.0550333333
 POINT D LOCATION: 30.5519388889, -87.0544777778



POINT C



POINT D

	<p>I-10 FIRE DAMAGE ASSESSMENT</p>	<p>EASTBOUND C TO D</p>	<p>10</p>
---	---	--------------------------------	------------------



POINT E LOCATION: 30.5522694444, -87.0540527778
 POINT F LOCATION: 30.5527555556, -87.0534111111



POINT E



POINT F