

LIST OTHER SPECIAL PROJECT NOTES HERE (NOTES VARY PER DISTRICT)

NOTE: PROJECT NOTES ARE INTENDED TO BE USED TO CLARIFY DESIGN DETAIL, CONSTRUCTION PRACTICES OR METHOD FOR PAYMENT. IN GENERAL, PROJECT NOTES SHOULD BE KEPT TO A MINIMUM. ONLY THOSE NOTES THAT ARE JOB SPECIFIC SHOULD BE USED. PROJECT NOTES SHOULD ONLY BE USED TO DETAIL UNIQUENESS AND NOT TO BROADEN OR CURTAIL REQUIREMENTS IN THE SPECIFICATIONS. NOTES THAT RESTATE THE STANDARD SPECIFICATIONS OR STANDARD INDEXES SHALL NOT BE USED. THIS WILL HELP TO PLACE PROPER EMPHASIS ON THOSE NOTES THAT ARE JOB SPECIFIC AND AVOID DISCREPANCY OF DOCUMENTS.

LIST ANY ABBREVIATIONS USED IN THE PLAN SET BUT NOT FOUND IN DESIGN STANDARDS, INDEX 001.

PROJECT NOTES

- BENCHMARK ELEVATIONS SHOWN ON THE PLANS ARE NORTH AMERICAN VERTICAL DATUM OF 1988 (NAVD 88).
- THE LOCATION(S) OF THE UTILITIES SHOWN IN THE PLANS (INCLUDING THOSE DESIGNATED Vv, Vh, AND Vvh) ARE BASED ON LIMITED INVESTIGATION TECHNIQUES AND SHOULD BE CONSIDERED APPROXIMATE ONLY. THE VERIFIED LOCATIONS/ELEVATIONS APPLY ONLY AT THE POINTS SHOWN. INTERPOLATIONS BETWEEN THESE POINTS HAVE NOT BEEN VERIFIED.

UTILITY/AGENCY OWNERS:	COMPANY	CONTACT	TELEPHONE NUMBERS
	SPRINT/FLORIDA, INC.	CHERYL FLORES	(850) 555-1234
	QWEST	JIM WEST	(850) 555-2345
	MCI WORLDCOM	ANDY WORLEY	(407) 555-3456
	SPRINT COMMUNICATIONS	ROB SPRINTER	(404) 555-4567
	CITY OF TALLAHASSEE UTILITIES	CHESTER DIGGER	(850) 555-5678

EXHIBIT PN-1
DATE: 01/01/15

REVISIONS		STATE OF FLORIDA DEPARTMENT OF TRANSPORTATION			PROJECT NOTES	SHEET NO.
DATE	DESCRIPTION	ROAD NO.	COUNTY	FINANCIAL PROJECT ID		
		10	LEON	123456-1-52-01		

CURVE DATA CLCONST2
 PI STA. = 128+57.10
 DELTA = 5° 55' 58" (LT.)
 D = 0° 45' 00"
 T = 395.87
 L = 791.02
 R = 7,639.44
 PRC STA. = 124+61.24
 PT STA. = 132+52.26

STA. 131+77.73 Q CONST. =
 STA. 50+30.36
 Q N LAUREN PL.
 EQUATION:
 PT STA. 132+52.26 Q CONST. BK. =
 STA. 32+50.03 Q SURVEY AHD. =
 STA. 132+50.03 Q CONST. AHD.

STA. 133+60.02 Q CONST.
 GULF RAILWAY
 CROSSING NO. 620179

STA. 33+60.30 Q SURVEY
 GULF RAILWAY
 CROSSING NO. 620179

STA. 135+11.97 Q CONST. =
 STA. 30+30.00
 Q S GABRIEL CT.

STA. 137+59.82 Q CONST. =
 STA. 30+03.39 Q JULIA AVE.
 RELOCATION

END PROJECT 123456-1-52-01
 STA. 154+85.00
 BEGIN PROJECT 123457-1-52-01

STA. 153+89.25 Q CONST. =
 STA. 30+30.00 Q N LILA AVE.

STA. 144+93.41 Q CONST. =
 STA. 30+30.00 Q N RAEA AVE.

STA. 44+93.82 Q SURVEY =
 STA. 30+00.00 Q N RAEA AVE.

STA. 44+46.95 Q SURVEY =
 STA. 30+00.00 Q S RAEA AVE.

STA. 53+89.36 Q SURVEY =
 STA. 30+00.00 Q N LILA AVE.

STA. 31+75.74 Q SURVEY =
 STA. 50+00.00
 Q N LAUREN PL.

STA. 31+75.39 Q SURVEY
 STA. 50+00.00
 Q S LAUREN PL.

STA. 35+12.30 Q SURVEY =
 STA. 30+00.00
 Q S GABRIEL CT.

STA. 36+29.44 Q SURVEY =
 STA. 20+00.00 Q SURVEY
 LATERAL DITCH

STA. 144+47.77 Q CONST. =
 STA. 30+30.01 Q S RAEA AVE.

STA. 37+66.86 Q CONST. =
 STA. 29+72.69 Q JULIA AVE.

BEGIN PROJECT 123456-1-52-01
 STA. 120+26.44
 END PROJECT 123455-1-52-01

STA. 131+77.36 Q CONST.
 STA. 50+30.36 Q S LAUREN PL.

STA. 125+63.48 Q CONST. =
 STA. 30+61.04 Q DIANE ST.

STA. 119+99.23 Q CONST. =
 STA. 451+67.01 Q CR 70

N 89° 38' 15" E
 Q CONST. 120
 Q CONST. 125
 Q CONST. 130
 Q CONST. 135
 Q CONST. 140
 Q CONST. 145
 Q CONST. 150
 Q CONST. 155

CURVE DATA CLCONST
 PI STA. = 122+51.62
 DELTA = 6° 17' 42" (RT.)
 D = 1° 30' 00"
 T = 210.04
 L = 419.65
 R = 3,819.50
 PC STA. = 120+41.58
 PT STA. = 124+61.23

STA. 20+00.05 Q SURVEY =
 STA. 450+75.98 Q CR 70

STA. 25+62.77 Q SURVEY =
 STA. 30+00.00 Q DIANE ST.

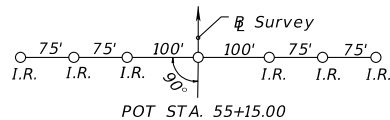
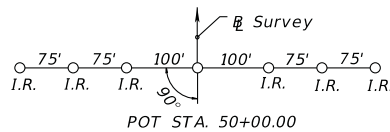
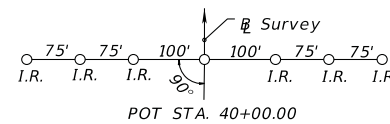
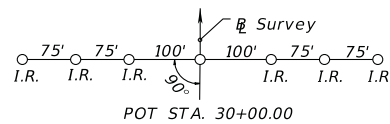
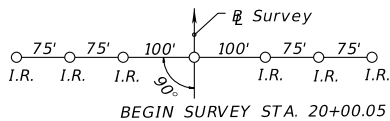


EXHIBIT: EX-PL-1
 Date: 1/1/13

REVISIONS		REVISIONS	
DATE	DESCRIPTION	DATE	DESCRIPTION

STATE OF FLORIDA DEPARTMENT OF TRANSPORTATION		
ROAD NO.	COUNTY	FINANCIAL PROJECT ID
10	LEON	123456-1-52-01

PROJECT LAYOUT		SHEET NO.

SUSERS SDATES STIMES SFILES

NOTICE: THE OFFICIAL RECORD OF THIS SHEET IS THE ELECTRONIC FILE SIGNED AND SEALED UNDER RULE 61G15-23.003, F.A.C.