

GENERAL NOTES

1. BENCHMARK ELEVATIONS SHOWN ON THE PLANS ARE NORTH AMERICAN VERTICAL DATUM OF 1988 (NAVD 88).
2. BUILDINGS TO BE REMOVED BY OTHERS, UNLESS OTHERWISE NOTED.
3. EXISTING DRAINAGE STRUCTURES WITHIN CONSTRUCTION LIMITS SHALL REMAIN UNLESS OTHERWISE NOTED.
4. THE LOCATION(S) OF THE UTILITIES SHOWN IN THE PLANS (INCLUDING THOSE DESIGNATED Vv, Vh, AND Vvh) ARE BASED ON LIMITED INVESTIGATION TECHNIQUES AND SHOULD BE CONSIDERED APPROXIMATE ONLY. THE VERIFIED LOCATIONS/ELEVATIONS APPLY ONLY AT THE POINTS SHOWN. INTERPOLATIONS BETWEEN THESE POINTS HAVE NOT BEEN VERIFIED.
5. EXISTING UTILITIES ARE TO REMAIN IN PLACE UNLESS OTHERWISE NOTED.
6. UTILITY/AGENCY OWNERS:

COMPANY	CONTACT	TELEPHONE NUMBERS
SPRINT/FLORIDA, INC.	CHERYL FLORES	(850) 555-1234
QWEST	JIM WEST	(850) 555-2345
MCI WORLDCOM	ANDY WORLEY	(407) 555-3456
SPRINT COMMUNICATIONS	ROB SPRINTER	(404) 555-4567
CITY OF TALLAHASSEE UTILITIES	CHESTER DIGGER	(850) 555-5678
7. SPECIAL ATTENTION IS DIRECTED TO THE FACT THAT PORTIONS OF SOME DRAINAGE STRUCTURES EXTEND INTO THE STABILIZED PORTION OF THE ROADBED AND EXTREME CAUTION WILL BE NECESSARY IN STABILIZATION OPERATIONS AT THESE LOCATIONS.
8. ALL DRAINAGE STRUCTURES HAVE OPTIONAL MATERIALS. THE OPTIONAL MATERIALS TABULATION SHEET(S) SHOWS ALL MATERIALS ALLOWED AS WELL AS INDICATING WHICH MATERIAL IS PLOTTED ON THESE SHEETS AND USED AS THE BASIS FOR PAY QUANTITIES.
9. IF ANY PUBLIC LAND CORNER WITHIN THE LIMITS OF CONSTRUCTION IS IN DANGER OF BEING DESTROYED AND HAS NOT BEEN PROPERLY REFERENCED, IMMEDIATELY NOTIFY THE ENGINEER IN CONJUNCTION WITH THE DISTRICT LOCATION SURVEYOR.
10. EXISTING DRIVEWAYS WITHIN THE LIMITS OF THIS PROJECT ARE TO BE REPLACED AT THE SAME LOCATION AND WIDTH, UNLESS OTHERWISE SHOWN IN THE PLANS.

LIST ANY ABBREVIATIONS USED IN THE PLAN SET BUT NOT FOUND IN DESIGN STANDARDS, INDEX 001.

LIST OTHER SPECIAL PROJECT NOTES HERE (NOTES VARY PER DISTRICT)

NOTE: PLAN NOTES ARE INTENDED TO BE USED TO CLARIFY DESIGN DETAIL, CONSTRUCTION PRACTICES OR METHOD FOR PAYMENT. IN GENERAL, PLAN NOTES SHOULD BE KEPT TO A MINIMUM. ONLY THOSE NOTES THAT ARE JOB SPECIFIC SHOULD BE USED. PLAN NOTES SHOULD ONLY BE USED TO DETAIL UNIQUENESS AND NOT TO BROADEN OR CURTAIL REQUIREMENTS IN THE SPECIFICATIONS. NOTES THAT RESTATE THE STANDARD SPECIFICATIONS OR STANDARD INDEXES SHALL NOT BE USED. THIS WILL HELP TO PLACE PROPER EMPHASIS ON THOSE NOTES THAT ARE JOB SPECIFIC AND AVOID DISCREPANCY OF DOCUMENTS.

EXHIBIT GN-1  
DATE: 07/1/13

REVISIONS				STATE OF FLORIDA DEPARTMENT OF TRANSPORTATION			GENERAL NOTES	SHEET NO.
DATE	DESCRIPTION	DATE	DESCRIPTION	ROAD NO.	COUNTY	FINANCIAL PROJECT ID		
				10	LEON	123456-1-52-01		

SUSERS SDATES ST/MS SFILES

CURVE DATA CLCONST2  
 PI STA. = 128+57.10  
 DELTA = 5° 55' 58" (LT.)  
 D = 0° 45' 00"  
 T = 395.87  
 L = 791.02  
 R = 7,639.44  
 PRC STA. = 124+61.24  
 PT STA. = 132+52.26

STA. 131+77.73 Q CONST. =  
 STA. 50+30.36  
 Q N LAUREN PL.  
 EQUATION:  
 PT STA. 132+52.26 Q CONST. BK. =  
 STA. 32+50.03 Q SURVEY AHD. =  
 STA. 132+50.03 Q CONST. AHD.

STA. 133+60.02 Q CONST.  
 GULF RAILWAY  
 CROSSING NO. 620179

STA. 33+60.30 Q SURVEY  
 GULF RAILWAY  
 CROSSING NO. 620179

STA. 135+11.97 Q CONST. =  
 STA. 30+30.00  
 Q S GABRIEL CT.

STA. 137+59.82 Q CONST. =  
 STA. 30+03.39 Q JULIA AVE.  
 RELOCATION

END PROJECT 123456-1-52-01  
 STA. 154+85.00  
 BEGIN PROJECT 123457-1-52-01

STA. 153+89.25 Q CONST. =  
 STA. 30+30.00 Q N LILA AVE.

STA. 144+93.41 Q CONST. =  
 STA. 30+30.00 Q N RAEA AVE.

STA. 44+93.82 Q SURVEY =  
 STA. 30+00.00 Q N RAEA AVE.

STA. 44+46.95 Q SURVEY =  
 STA. 30+00.00 Q S RAEA AVE.

STA. 53+89.36 Q SURVEY =  
 STA. 30+00.00 Q N LILA AVE.

STA. 31+75.74 Q SURVEY =  
 STA. 50+00.00  
 Q N LAUREN PL.

STA. 31+75.39 Q SURVEY  
 STA. 50+00.00  
 Q S LAUREN PL.

STA. 35+12.30 Q SURVEY =  
 STA. 30+00.00  
 Q S GABRIEL CT.

STA. 36+29.44 Q SURVEY =  
 STA. 20+00.00 Q SURVEY  
 LATERAL DITCH

STA. 144+47.77 Q CONST. =  
 STA. 30+30.01 Q S RAEA AVE.

STA. 37+66.86 Q CONST. =  
 STA. 29+72.69 Q JULIA AVE.

BEGIN PROJECT 123456-1-52-01  
 STA. 120+26.44  
 END PROJECT 123455-1-52-01

STA. 131+77.36 Q CONST.  
 STA. 50+30.36 Q S LAUREN PL.

STA. 125+63.48 Q CONST. =  
 STA. 30+61.04 Q DIANE ST.

STA. 119+99.23 Q CONST. =  
 STA. 451+67.01 Q CR 70

N 89° 38' 15" E  
 20

CURVE DATA CLCONST  
 PI STA. = 122+51.62  
 DELTA = 6° 17' 42" (RT.)  
 D = 1° 30' 00"  
 T = 210.04  
 L = 419.65  
 R = 3,819.50  
 PC STA. = 120+41.58  
 PT STA. = 124+61.23

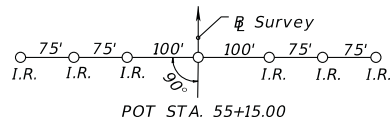
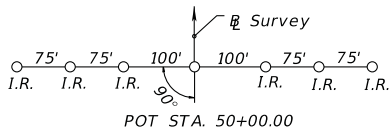
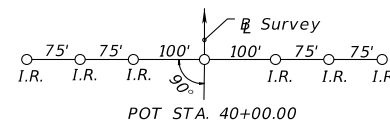
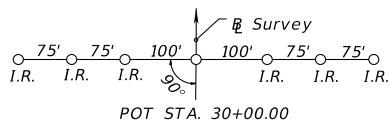
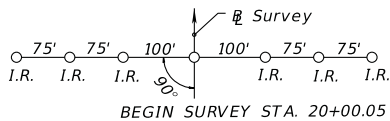


EXHIBIT: EX-PL-1  
 Date: 1/1/13

REVISIONS				STATE OF FLORIDA DEPARTMENT OF TRANSPORTATION			PROJECT LAYOUT	SHEET NO.
DATE	DESCRIPTION	DATE	DESCRIPTION	ROAD NO.	COUNTY	FINANCIAL PROJECT ID		
				10	LEON	123456-1-52-01		

SUSERS SDATES STIMES SFILES

NOTICE: THE OFFICIAL RECORD OF THIS SHEET IS THE ELECTRONIC FILE SIGNED AND SEALED UNDER RULE 61G15-23.003, F.A.C.