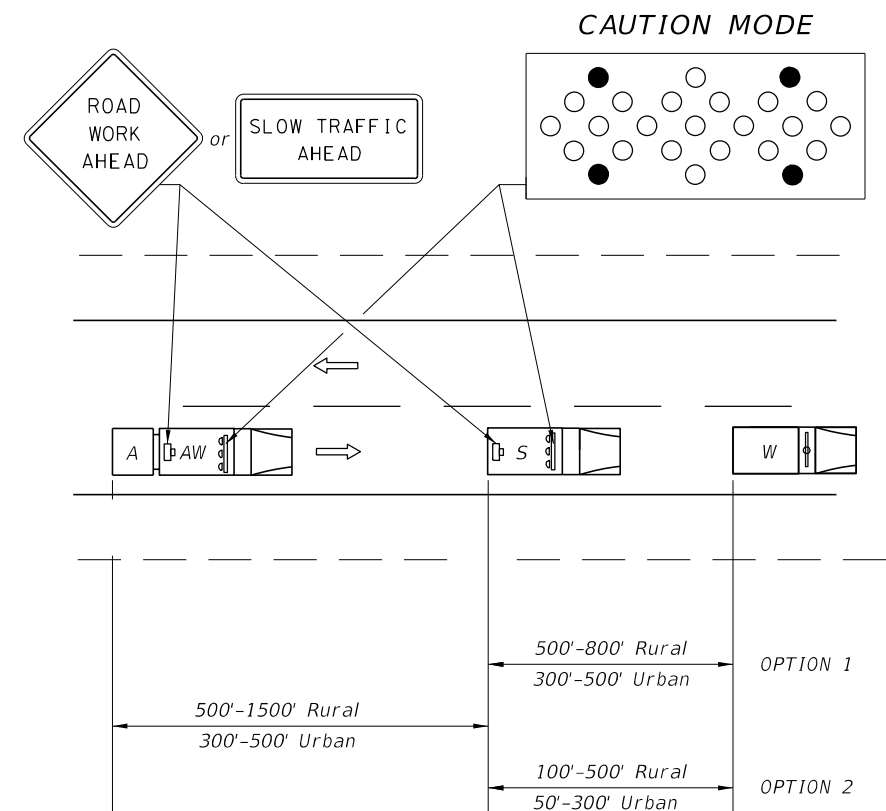


* The distance between the advance warning sign and the work location should not exceed 5 miles.

WORK ON SHOULDER



OPTION 1: Advance Warning Vehicle is optional and is to be operated in the shoulder when feasible. If an Advance Warning Vehicle is operated in the shoulder, an approved Truck Mounted Attenuator is required on both the Advance Warning and Shadow Vehicles. If an Advance Warning Vehicle is operated in the lane behind the Shadow Vehicle, an approved Truck Mounted Attenuator will be required on the Advance Warning Vehicle, but not required on the Shadow Vehicle. The Advance Warning Arrow Board and Warning Sign is required on both the Advance Warning and Shadow Vehicles.

OPTION 2: Advance Warning Vehicle is required and must be operated in the lane behind the Shadow Vehicle. An approved Truck Mounted Attenuator will be required on the Advance Warning Vehicle but not required on the Shadow Vehicle. The Advance Warning Arrow Board and Warning Sign is required on both the Advance Warning and Shadow Vehicles.

**WORK IN TRAVEL WAY
(Option 2 Shown, Option 1 Similar)**

- SYMBOLS**
- Work Area
 - Sign With 18" x 18" (Min.) Orange Flag And Type B Light
 - Work Zone Sign
 - Lane Identification + Direction of Traffic
 - Work Vehicle With Rotating/Strobe Lights
 - Shadow (S) Or Advance Warning (AW)
 - Vehicle with Advance Warning Arrow Board and Sign Message
 - Truck/Trailer Mounted Attenuator (TMA)
 - Advanced Warning Arrow Board

GENERAL NOTES

1. Where work activities within 2' of the edge of travel way are incidental (i.e., Mowing, Litter Removal), the Engineer may delete requirements for signs and the advance warning vehicle provided vehicles in the work area have high-intensity rotating, flashing, oscillating, or strobe lights operating.
2. If an arrow board is used, the caution mode shall be used.
3. Shadow and Advance Warning Vehicle shall display rotating/strobe lights.
4. For general TCZ requirements and additional information, refer to Index 600.

CONDITIONS

WHERE ANY VEHICLE, EQUIPMENT, WORKERS OR THEIR ACTIVITIES REQUIRE AN INTERMITTENT OR CONTINUOUS MOVING OPERATION.

4/1/2015 3:09:23 PM

LAST REVISION 4/1/15	REVISION	DESCRIPTION: Changed the Work in Travel Way Detail to show additional option.	 2015 DESIGN STANDARDS	TWO-LANE, TWO-WAY MOBILE OPERATION, WORK ON SHOULDER AND WORK WITHIN THE TRAVEL WAY	INDEX NO. 607	SHEET NO. 1 of 1
-------------------------	----------	--	------------------------------	--	------------------	---------------------