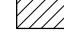


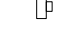
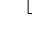


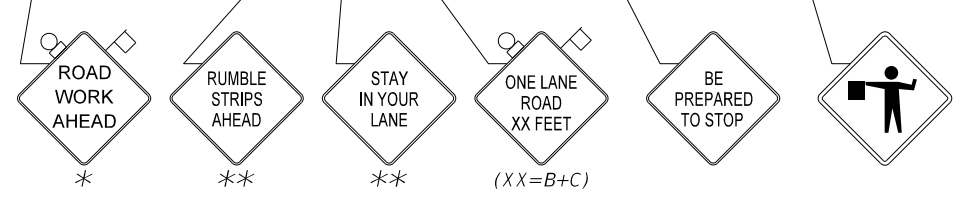
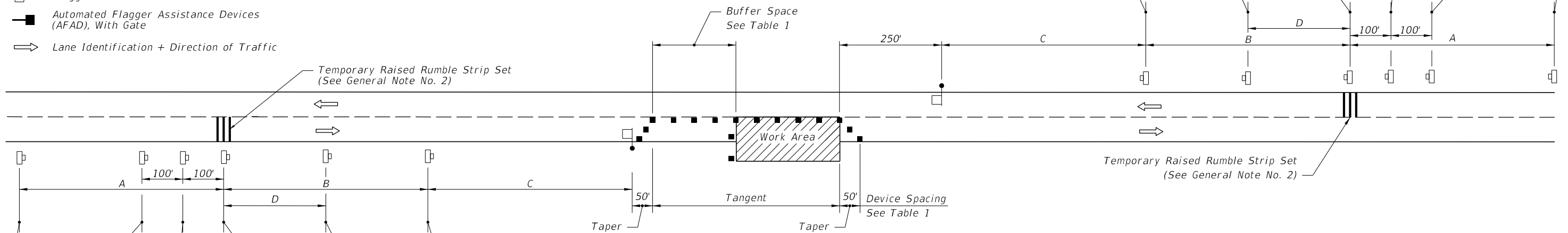


SYMBOLS

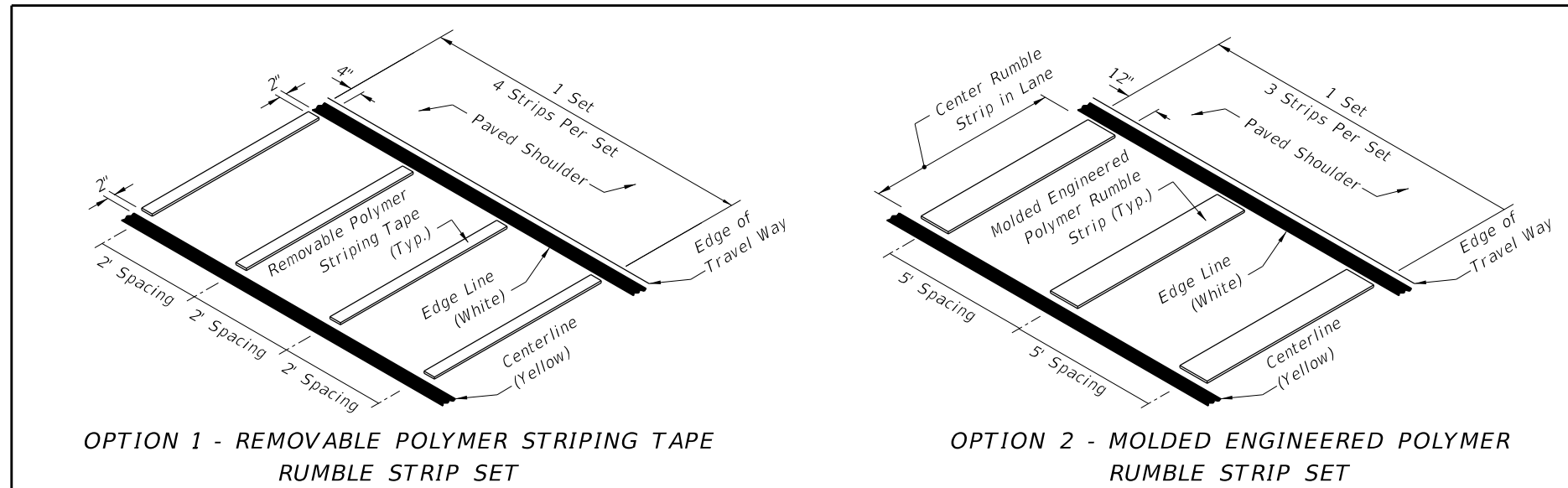
-  Work Area
-  Sign With 18" x 18" (Min.) Orange Flag And Type B Light
-  Channelizing Device (See Index No. 600)
-  Work Zone Sign
-  Flagger
-  Automated Flagger Assistance Devices (AFAD), With Gate
-  Lane Identification + Direction of Traffic

CONDITIONS

WHERE ANY VEHICLE, EQUIPMENT, WORKERS OR THEIR ACTIVITIES ENCROACH THE AREA BETWEEN THE CENTERLINE AND A LINE 2' OUTSIDE THE EDGE OF TRAVEL WAY.



- * May be omitted when installed as an advance warning sign.
- ** Install only when temporary raised rumble strips are in use. (See General Note No. 2)



OPTION 1 - REMOVABLE POLYMER STRIPING TAPE RUMBLE STRIP SET

OPTION 2 - MOLDED ENGINEERED POLYMER RUMBLE STRIP SET

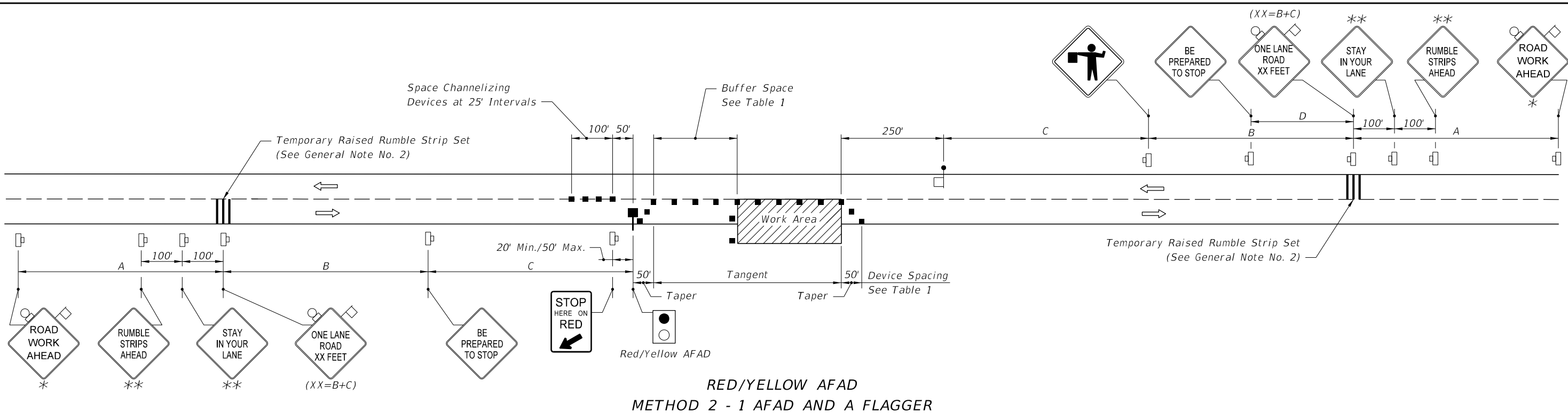
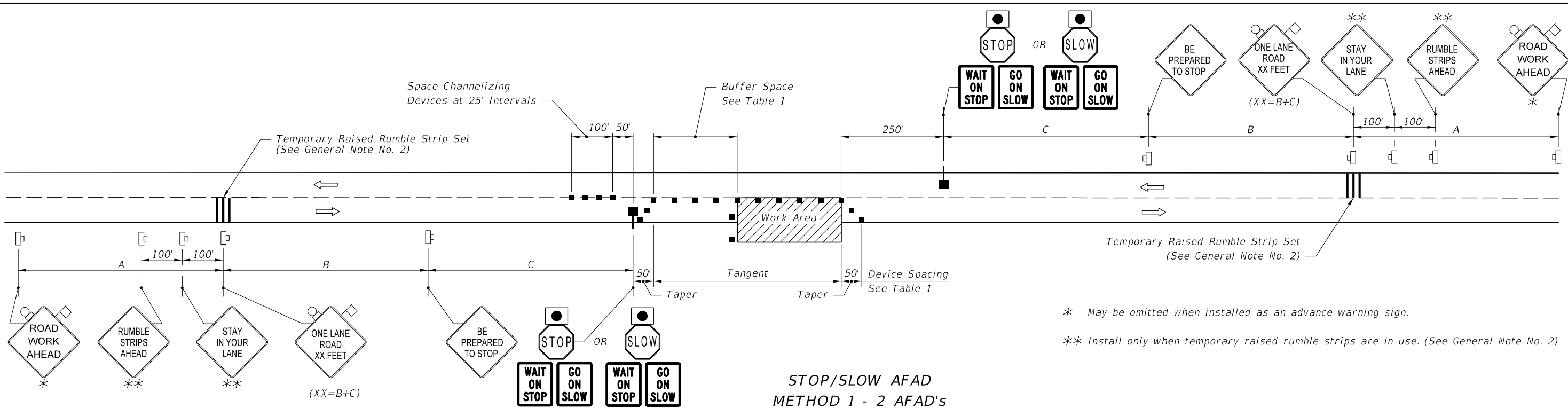
Posted Speed	DEVICE SPACING				Distance Between Signs				Buffer Space
	Maximum Spacing of Cones or Tubular Markers		Maximum Spacing of Type I or Type II Barricades/Panels/Drums						
	On a Taper	On a Tangent	On a Taper	On a Tangent	A	B	C	D	
25	20'	50'	20'	50'	200'	200'	200'	100'	155'
30	20'	50'	20'	50'	200'	200'	200'	100'	200'
35	20'	50'	20'	50'	200'	200'	200'	100'	250'
40	20'	50'	20'	50'	200'	200'	200'	100'	305'
45	20'	50'	20'	50'	350'	350'	350'	175'	360'
50	20'	50'	20'	100'	500'	500'	500'	250'	425'
55	20'	50'	20'	100'	2640'	1500'	1000'	500'	495'
60	20'	50'	20'	100'	2640'	1500'	1000'	500'	570'
65	20'	50'	20'	100'	2640'	1500'	1000'	500'	645'
70	20'	50'	20'	100'	2640'	1500'	1000'	500'	730'

GENERAL NOTES:

1. Confine work operations to one traffic lane, leaving the opposite lane open to traffic.
2. Temporary Raised Rumble Strips
 - a. Use when both of the following conditions are met concurrently:
 - i. Posted Speed is 50 mph or greater; and,
 - ii. Work duration is greater than 60 minutes.
 - b. Must be consistent in color throughout the work zone.
 - c. Place each Rumble Strip Set transversely across the lane at locations shown.
 - d. Use Option 1 or Option 2. Use only one option throughout work zone.
3. Additional one-way control may be effected by the following means:
 - a. Flag-carrying vehicle;
 - b. Official vehicle;
 - c. Pilot vehicles;
 - d. Traffic signals.
4. When a side road intersects the highway within the TTC zone, place additional TTC devices in accordance with other applicable TCZ Indexes.
5. The two channelizing devices directly in front of the work area may be omitted provided vehicles in the work area have high-intensity rotating, flashing, oscillating, or strobe lights operating.
6. When Buffer Space cannot be attained due to geometric constraints, use the greatest attainable length, but not less than 200 ft.
7. ROAD WORK AHEAD and the BE PREPARED TO STOP signs may be omitted if all of the following conditions are met:
 - a. Work operations are 60 minutes or less.
 - b. Speed limit is 45 mph or less.
 - c. There are no sight obstructions to vehicles approaching the work area for a distance equal to the buffer space.
 - d. Vehicles in the work area have high-intensity, rotating, flashing, oscillating, or strobe lights operating.
 - e. Volume and complexity of the roadway has been considered.
8. See Index 600 for general TCZ requirements and additional information.

When flaggers are the sole means of one-way control, the flaggers must be in sight of each other or in direct communication at all times.

12/16/2014 8:55:12 AM



AUTOMATED FLAGGER ASSISTANCE DEVICES (AFAD) NOTES:

1. Use AFAD's only where there is a single lane of approaching traffic in the direction to be controlled.
2. Illuminate the flagging station when AFAD is used at nighttime.
3. When the AFAD is not in use, remove or cover signs, move AFAD device outside the clear zone or shield it with a barrier or crash cushion.
4. Duration Notes shown on Sheet 1 do not apply when AFAD(s) are used.
5. Only qualified flaggers who have been trained in the operation of the AFAD may operate the AFAD. When in use, each AFAD must be in view of and attended at all times by the flagger operating the device. Use two flaggers and one of the following methods in the deployment of AFAD's:
 Method 1: Place an AFAD at each end of the temporary traffic control zone.
 Method 2: Place an AFAD at one end of the temporary traffic control zone and a flagger at the opposite end.
6. A single flagger may simultaneously operate two AFAD's (Method 1) or may operate a single AFAD on one end of the temporary traffic control zone while being the flagger at the opposite end of the temporary traffic control zone (Method 2) if all four of the following conditions are present:
 - a. The flagger has an unobstructed view of the AFAD(s);
 - b. The flagger has an unobstructed view of approaching traffic in both directions; and
 - c. For Method 1, the AFAD's are less than 800 ft apart. For Method 2, the AFAD and the flagger are less than 800 ft apart.
 - d. Ensure two trained flaggers are available on-site to provide normal flagging operations should an AFAD malfunction.

12/16/2014 8:55:13 AM

LAST REVISION 12/15/14	REVISION	DESCRIPTION: Redeveloped Index to include Temporary Raised Rumble Strip Sets.	2015 DESIGN STANDARDS	TWO-LANE, TWO-WAY, WORK WITHIN THE TRAVEL WAY	INDEX NO. 603	SHEET NO. 2 of 2
---------------------------	----------	--	----------------------------------	--	-------------------------	----------------------------