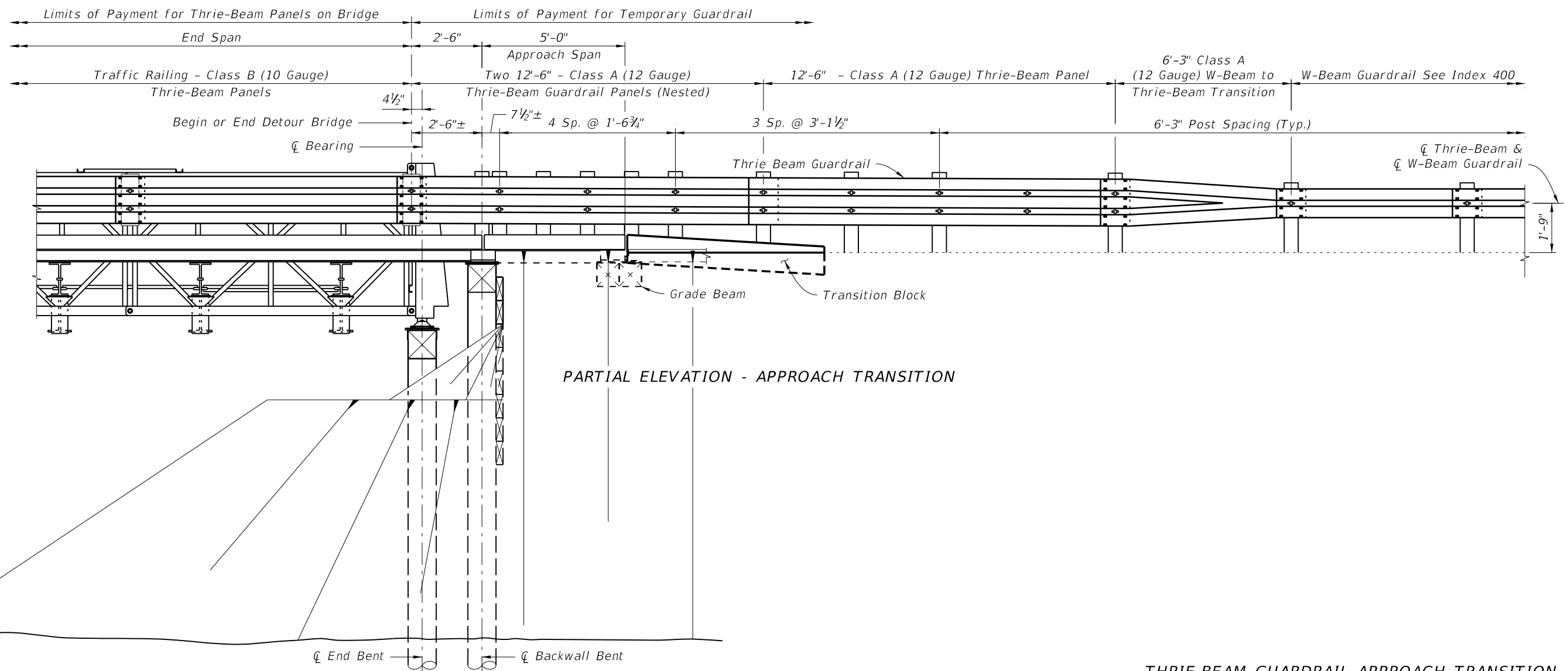


PARTIAL PLAN - APPROACH TRANSITION

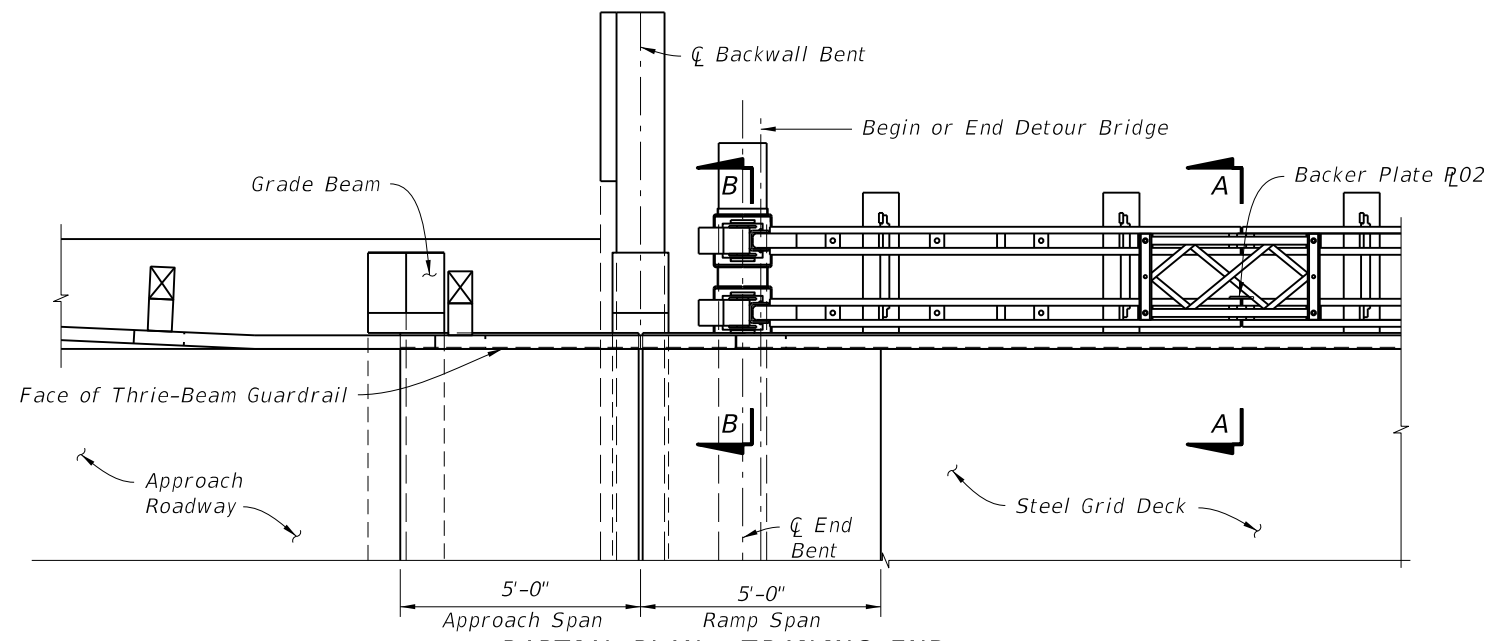


PARTIAL ELEVATION - APPROACH TRANSITION

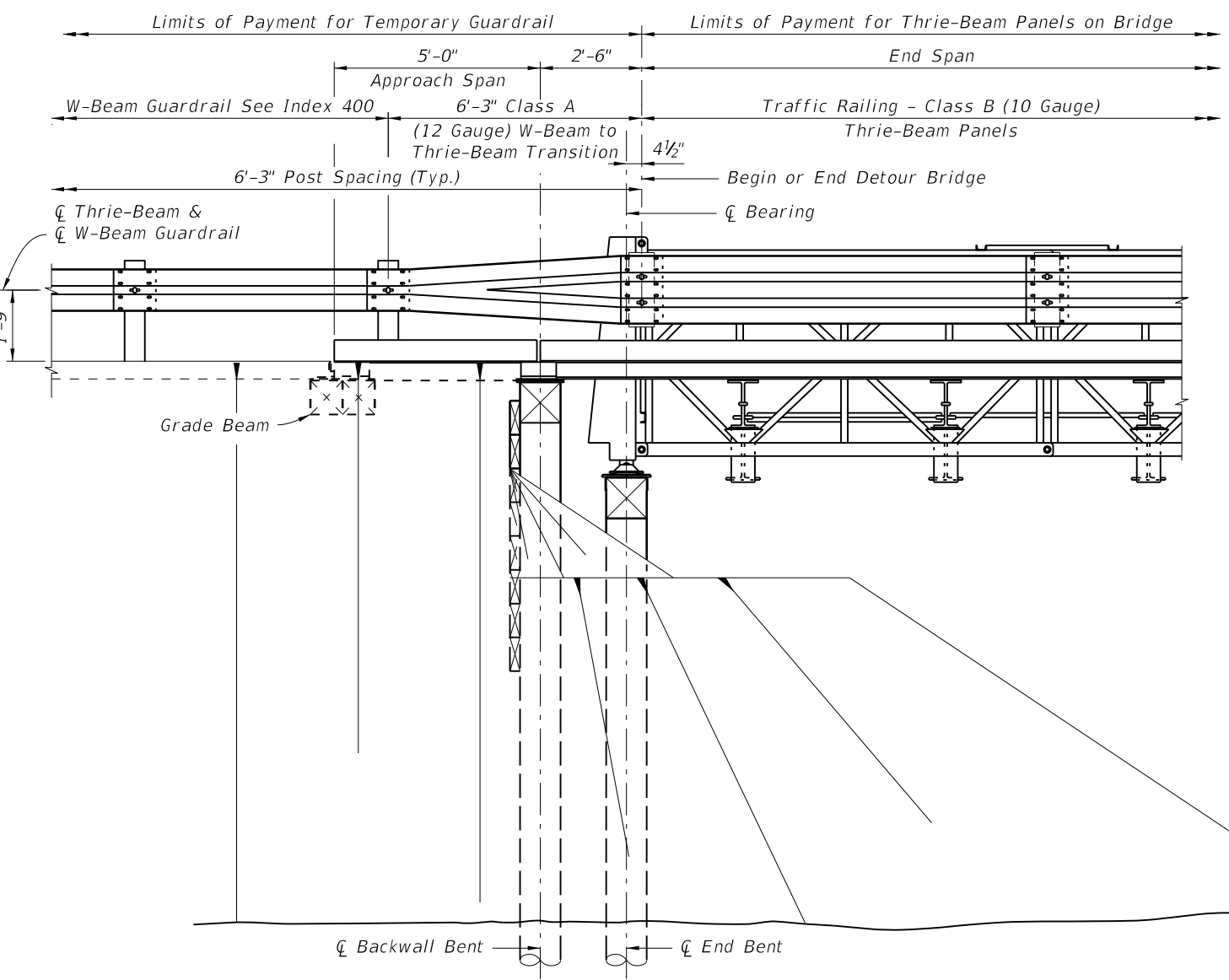
THRIE-BEAM GUARDRAIL APPROACH TRANSITION

5/22/2014 3:33:39 PM

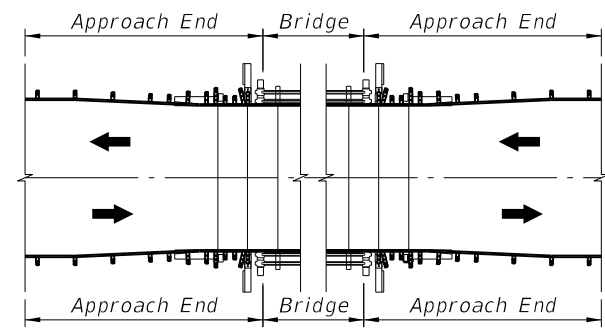
LAST REVISION	REVISION	DESCRIPTION:	 2015 DESIGN STANDARDS	TEMPORARY DETOUR BRIDGE THRIE-BEAM GUARDRAIL	INDEX NO. 21640	SHEET NO. 1 of 6
07/01/13						



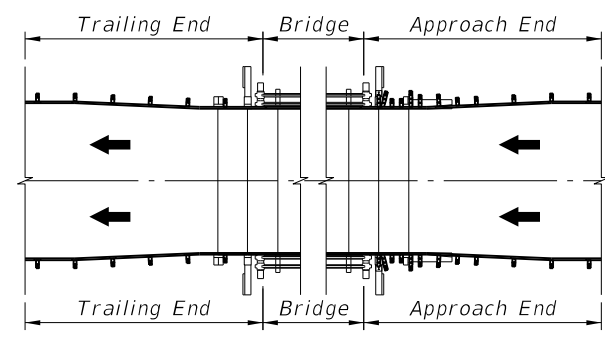
PARTIAL PLAN - TRAILING END



PARTIAL ELEVATION - TRAILING END




TWO-WAY TRAFFIC



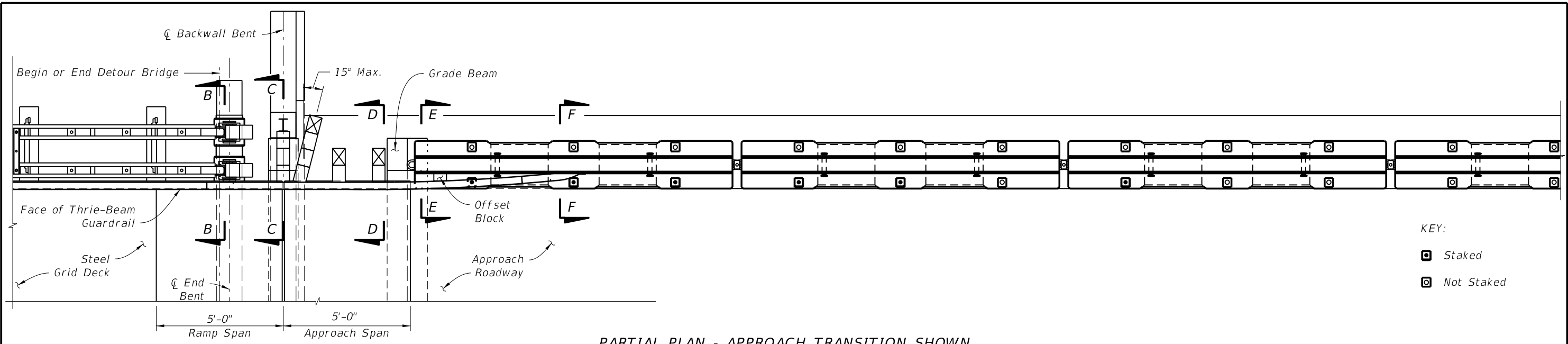
ONE-WAY TRAFFIC

END TRANSITION APPLICATION DETAILS

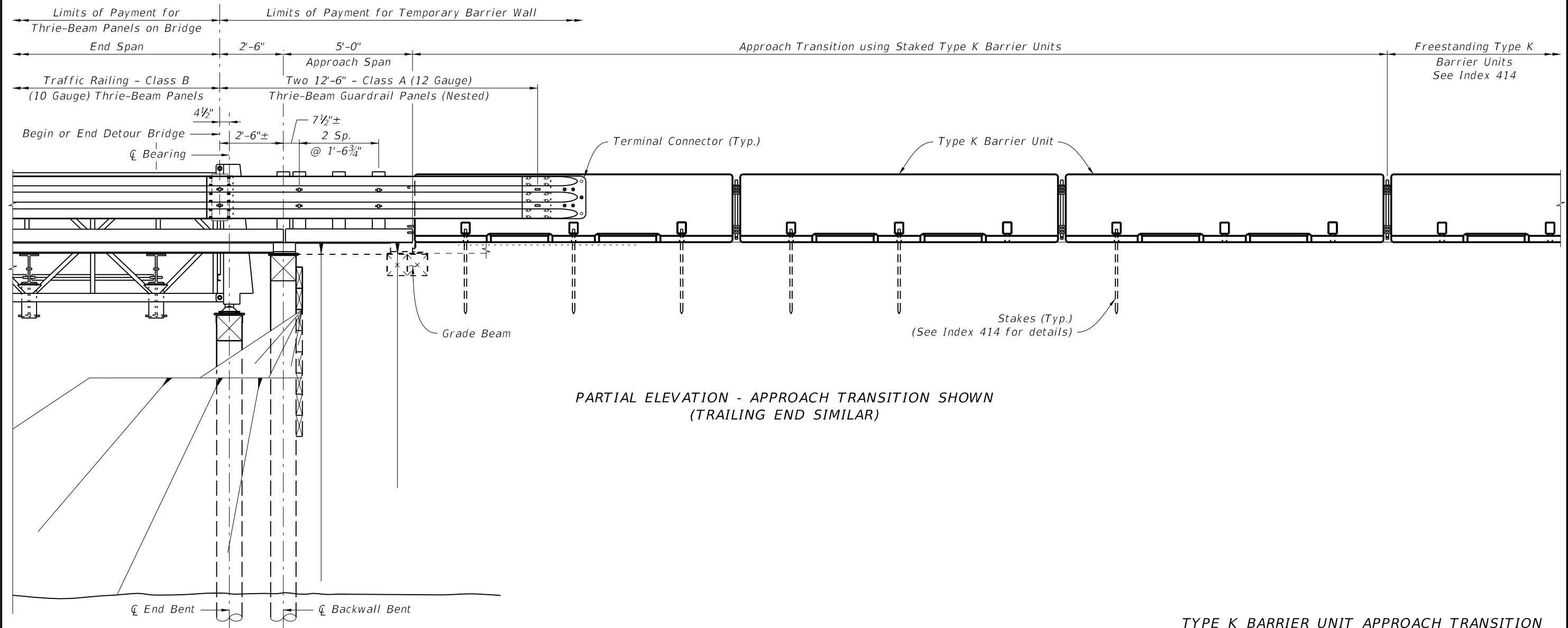
5/22/2014 3:33:41 PM

LAST REVISION	07/01/13	DESCRIPTION:	 2015 DESIGN STANDARDS	TEMPORARY DETOUR BRIDGE THRIE-BEAM GUARDRAIL	INDEX NO. 21640	SHEET NO. 2 of 6
---------------	----------	--------------	--	---	--------------------	---------------------

THRIE-BEAM GUARDRAIL TRAILING END TRANSITION




PARTIAL PLAN - APPROACH TRANSITION SHOWN
(TRAILING END SIMILAR)

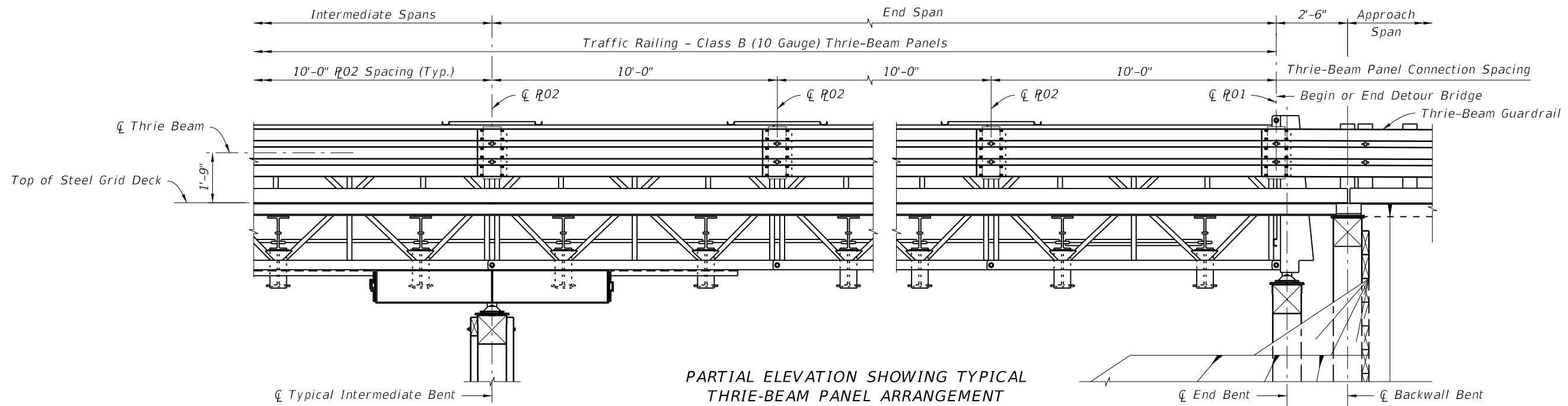


PARTIAL ELEVATION - APPROACH TRANSITION SHOWN
(TRAILING END SIMILAR)

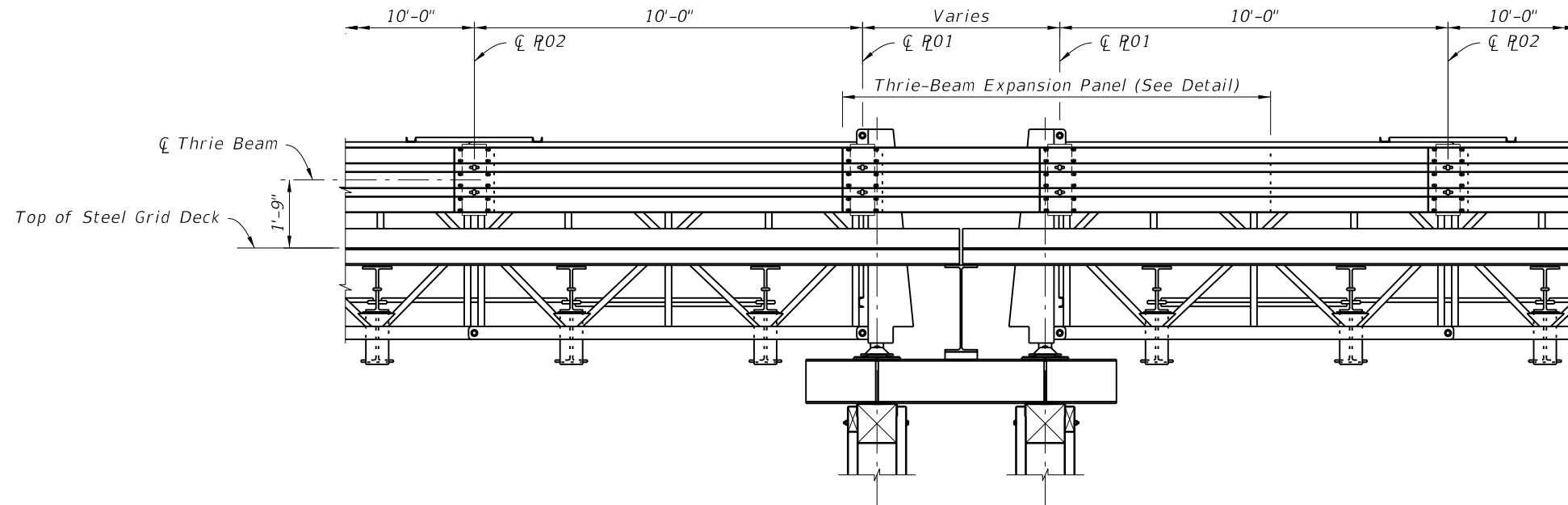
TYPE K BARRIER UNIT APPROACH TRANSITION

5/22/2014 3:33:42 PM

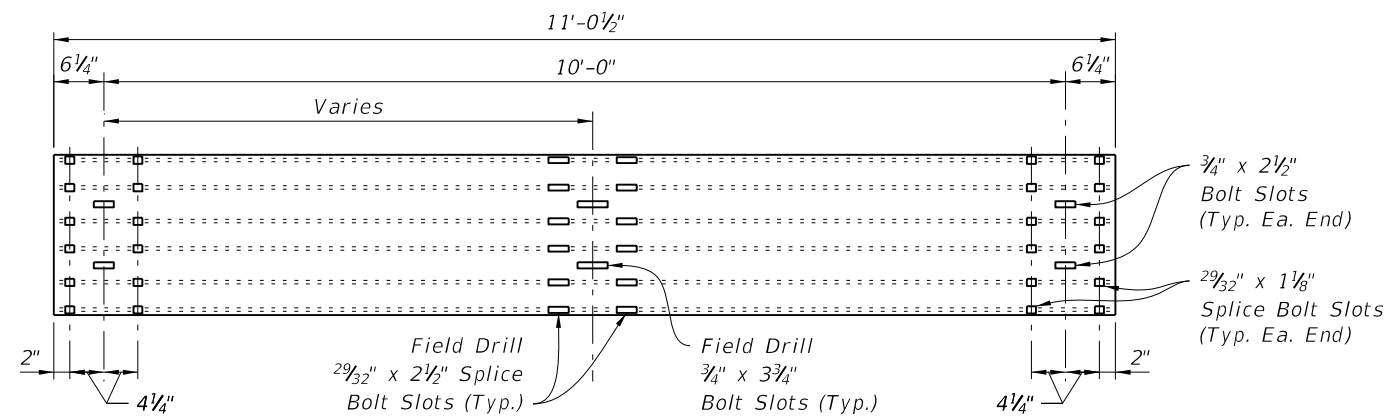
LAST REVISION 07/01/13	REVISION	DESCRIPTION:	 2015 DESIGN STANDARDS	TEMPORARY DETOUR BRIDGE THRIE-BEAM GUARDRAIL	INDEX NO. 21640	SHEET NO. 3 of 6
---------------------------	----------	--------------	---	---	--------------------	---------------------



PARTIAL ELEVATION SHOWING TYPICAL THRIE-BEAM PANEL ARRANGEMENT




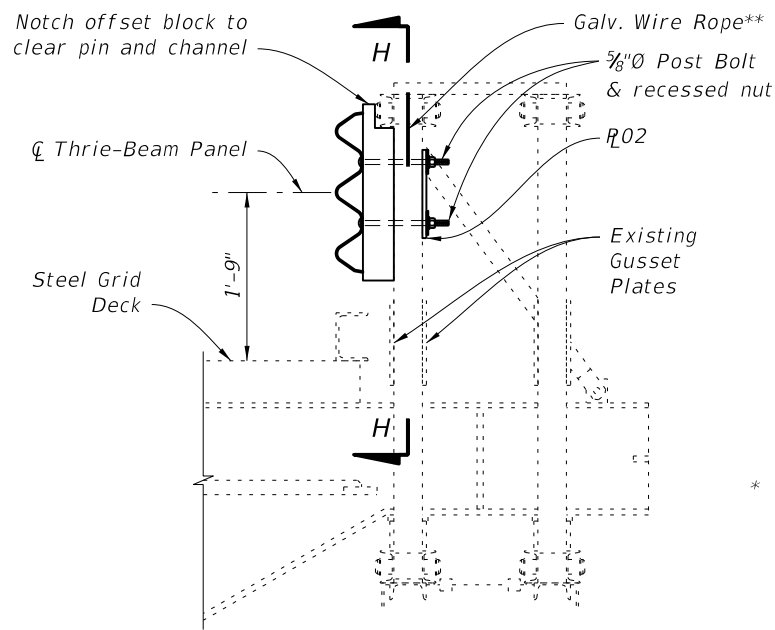
PARTIAL ELEVATION SHOWING THRIE-BEAM PANELS AT EXPANSION JOINT



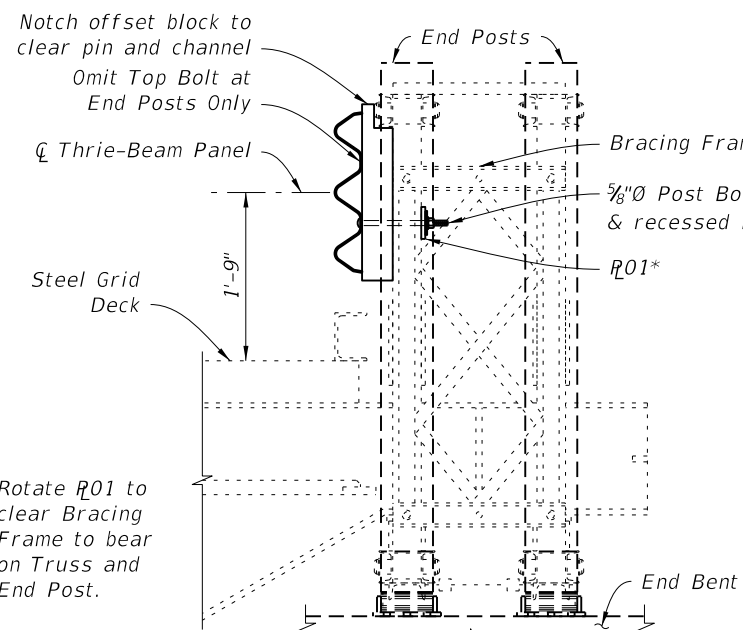
THRIE-BEAM EXPANSION PANEL DETAIL

5/22/2014 3:33:45 PM

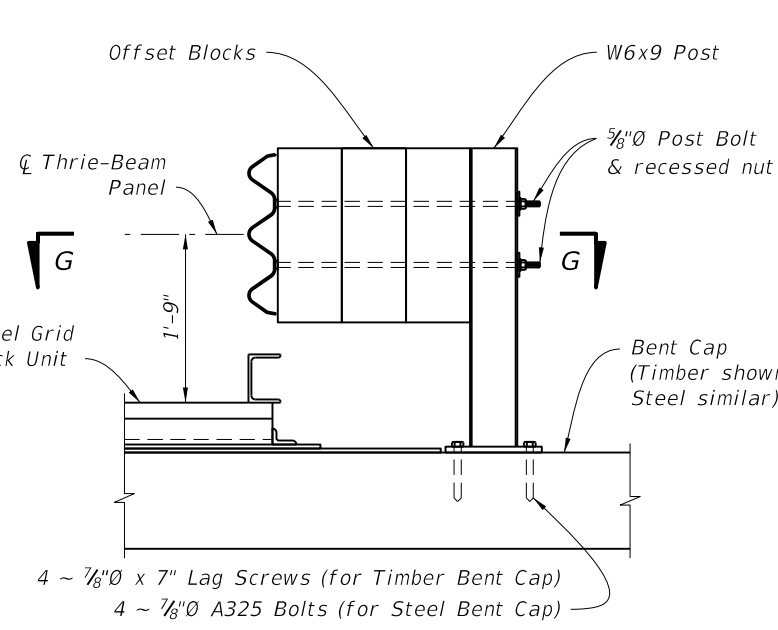
LAST REVISION 07/01/13	REVISION	DESCRIPTION:	 2015 DESIGN STANDARDS	TEMPORARY DETOUR BRIDGE THRIE-BEAM GUARDRAIL	INDEX NO. 21640	SHEET NO. 4 of 6
---------------------------	----------	--------------	---	---	--------------------	---------------------



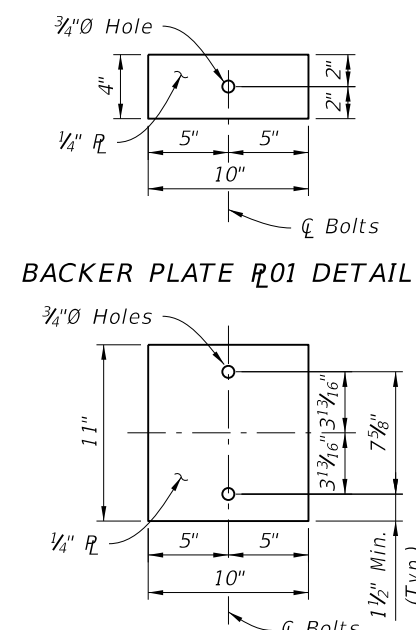
SECTION A-A



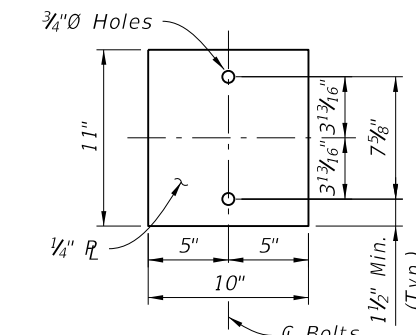
SECTION B-B



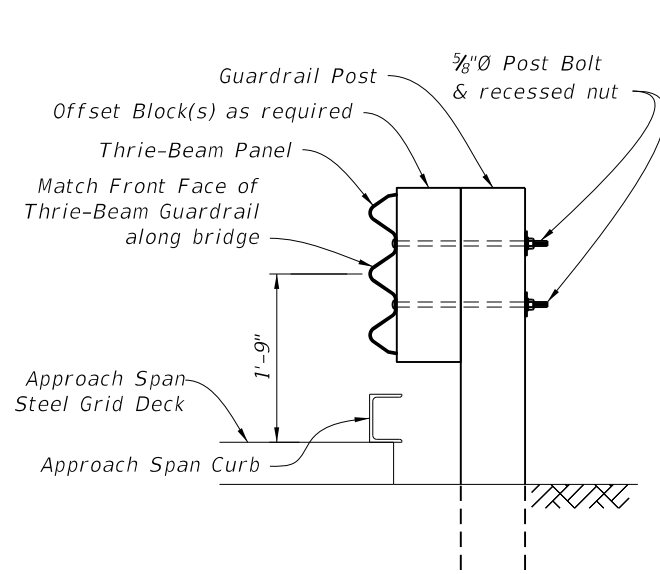
SECTION C-C



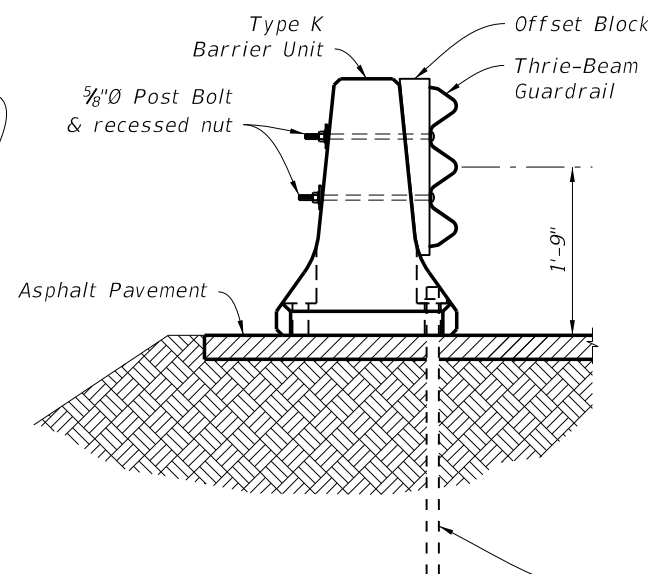
BACKER PLATE R01 DETAIL



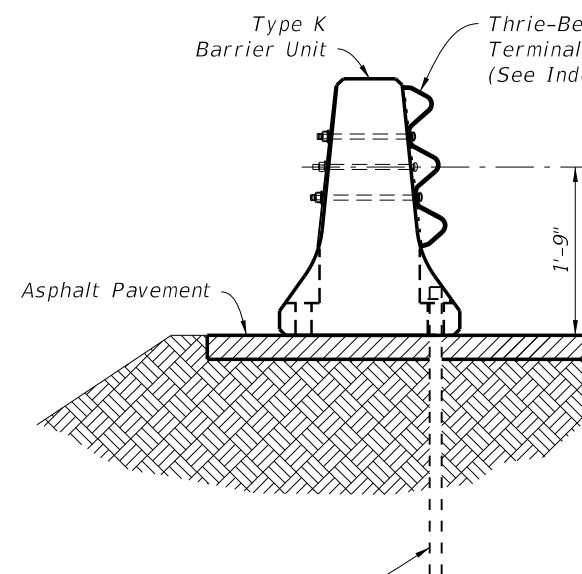
BACKER PLATE R02 DETAIL



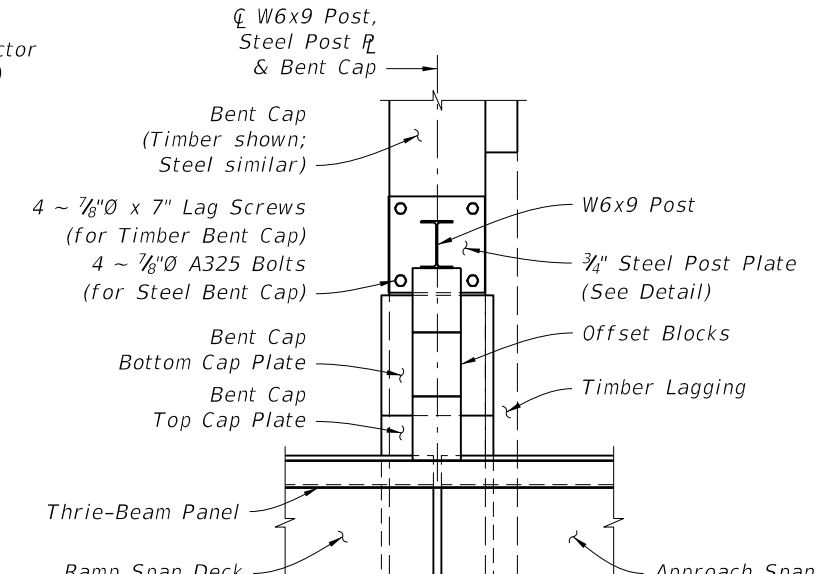
SECTION D-D



SECTION E-E

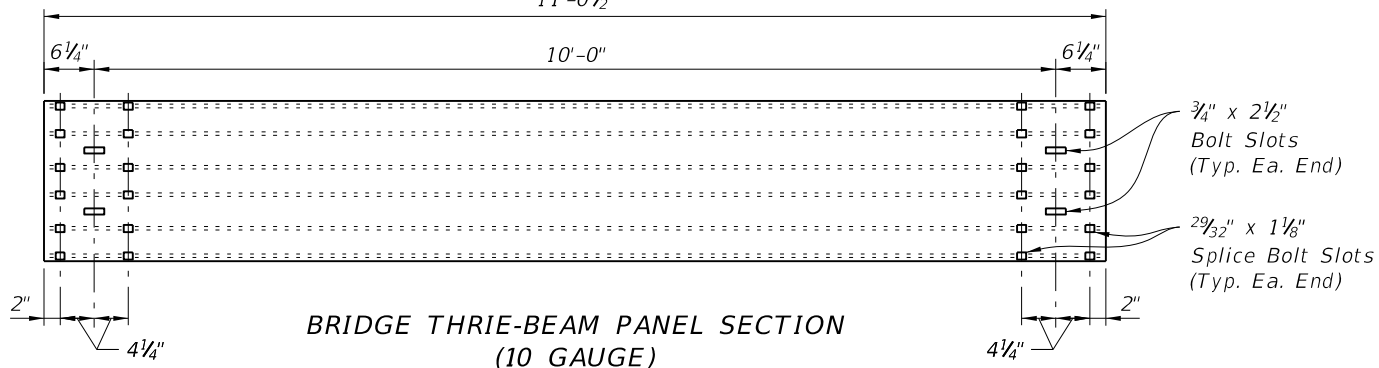


SECTION F-F

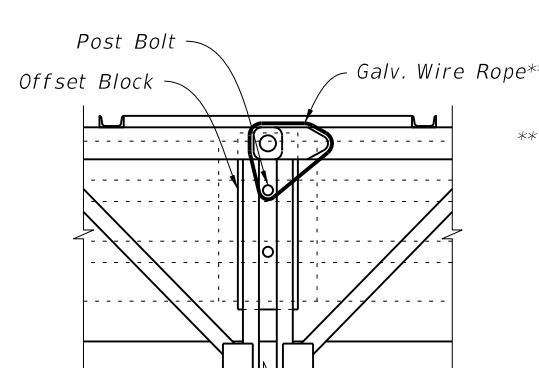


VIEW G-G

(Adjacent Post and Offset Blocks not shown for clarity)

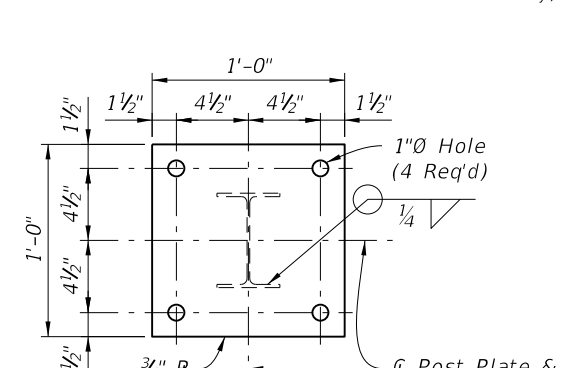


BRIDGE THRIE-BEAM PANEL SECTION (10 GAUGE)



SECTION H-H

** As directed by the Engineer in order to limit vibration induced vertical displacement of the Thrie-Beam Panels, provide Contractor supplied, one time use, commercially available 3/16"Ø (Min.) Galvanized Wire Rope w/ Ferrules (or other approved wire type) positioned and tensioned as required to secure the Panels.

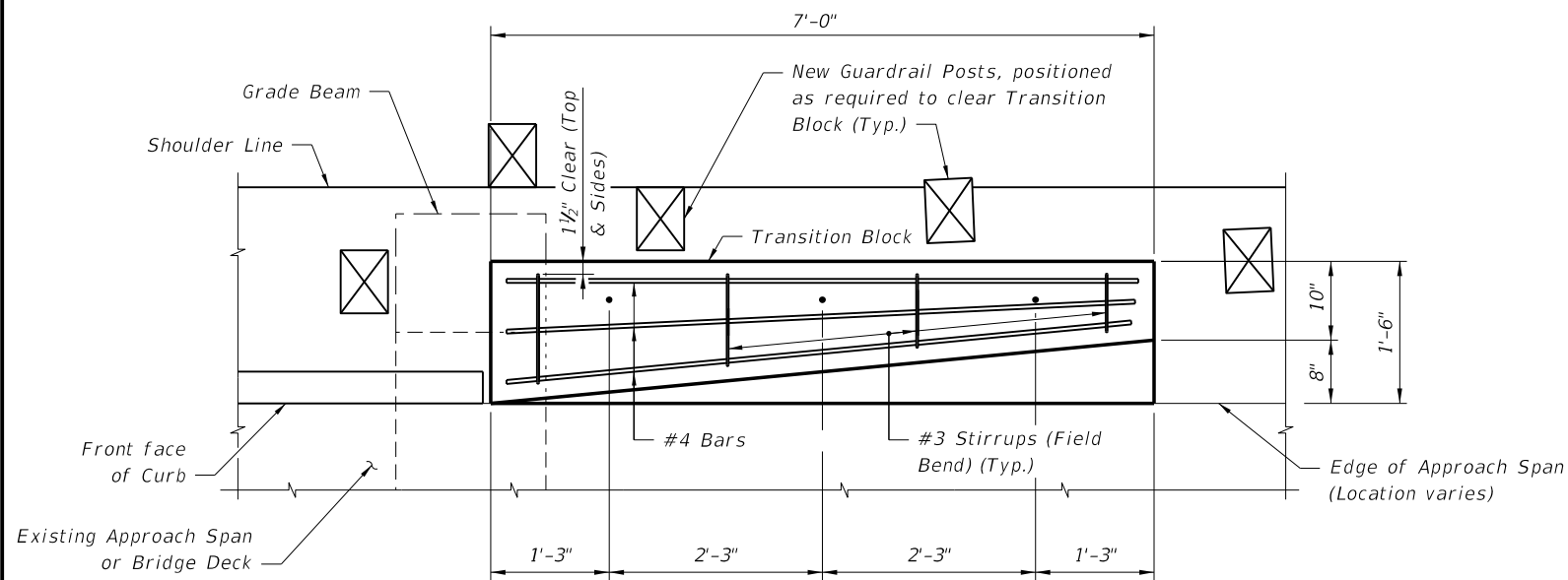


STEEL POST PLATE DETAIL

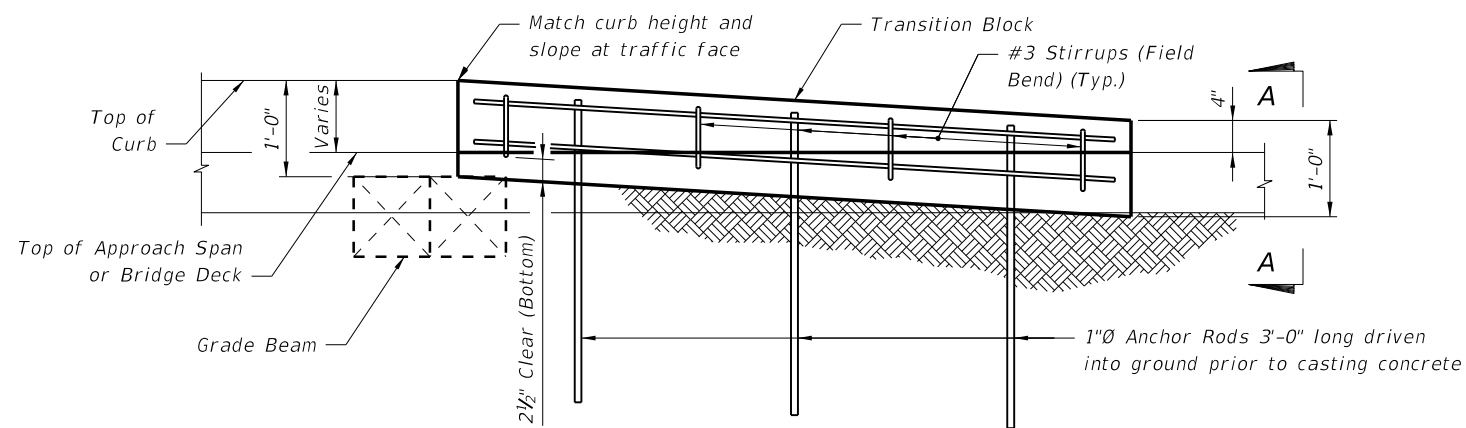
SECTIONS AND DETAILS

5/22/2014 3:33:46 PM

LAST REVISION 07/01/13	DESCRIPTION:	 2015 DESIGN STANDARDS	TEMPORARY DETOUR BRIDGE THRIE-BEAM GUARDRAIL	INDEX NO. 21640	SHEET NO. 5 of 6
---------------------------	--------------	-------------------------------------	---	---------------------------	----------------------------

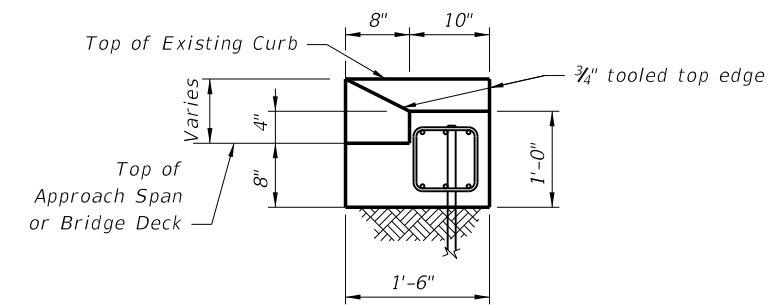


PLAN VIEW OF TRANSITION BLOCK
(GUARDRAIL NOT SHOWN FOR CLARITY)

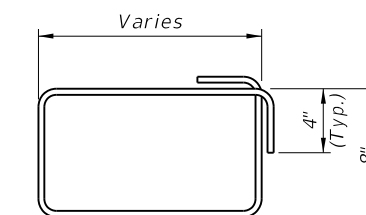


ELEVATION OF TRANSITION BLOCK
(GUARDRAIL AND POSTS NOT SHOWN FOR CLARITY)

ESTIMATED QUANTITIES		
ITEM	UNIT	QUANTITY
Concrete Class NS	CY	0.4
Reinforcing Steel	LB	61
Guardrail (Reset)	LF	12.5



END VIEW A-A



#3 STIRRUP (FIELD BEND)

NOTES:

REINFORCING STEEL: Reinforcing steel shall be ASTM A615, Grade 60.

ANCHOR RODS: Steel Anchor Rods shall be ASTM A36, ASTM A709 Grade 36 or ASTM A615 Grade 60 hot-dip galvanized in accordance with Specification Section 962.

5/22/2014 3:33:48 PM