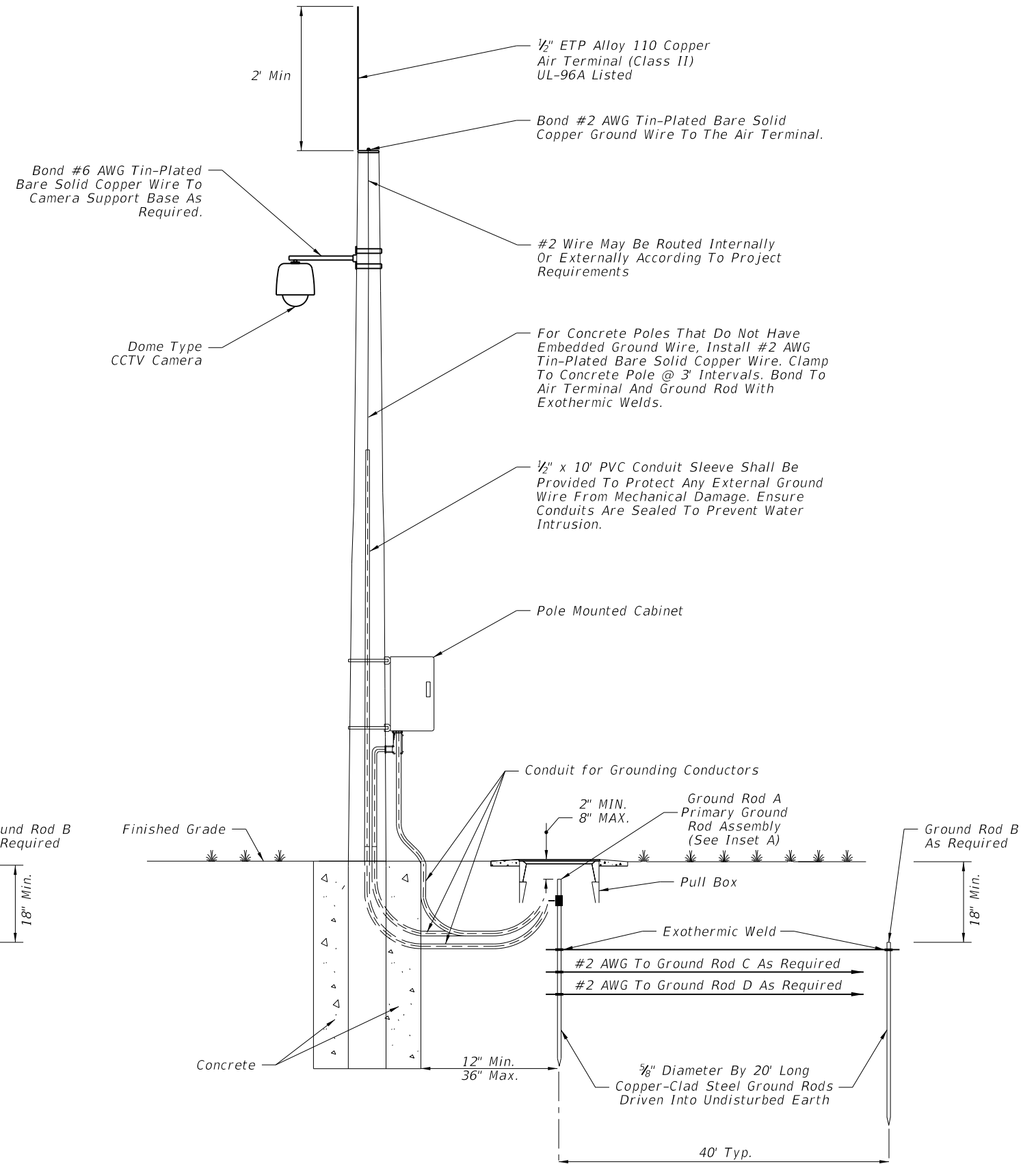


STEEL CCTV POLE



CONCRETE CCTV POLE

6/5/2014 11:54:21 AM

LAST REVISION 07/01/14

REVISION

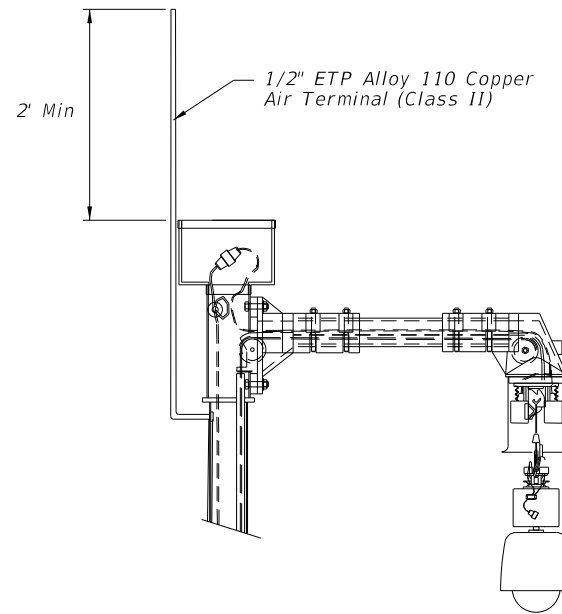
DESCRIPTION:

FDOT 2015 DESIGN STANDARDS

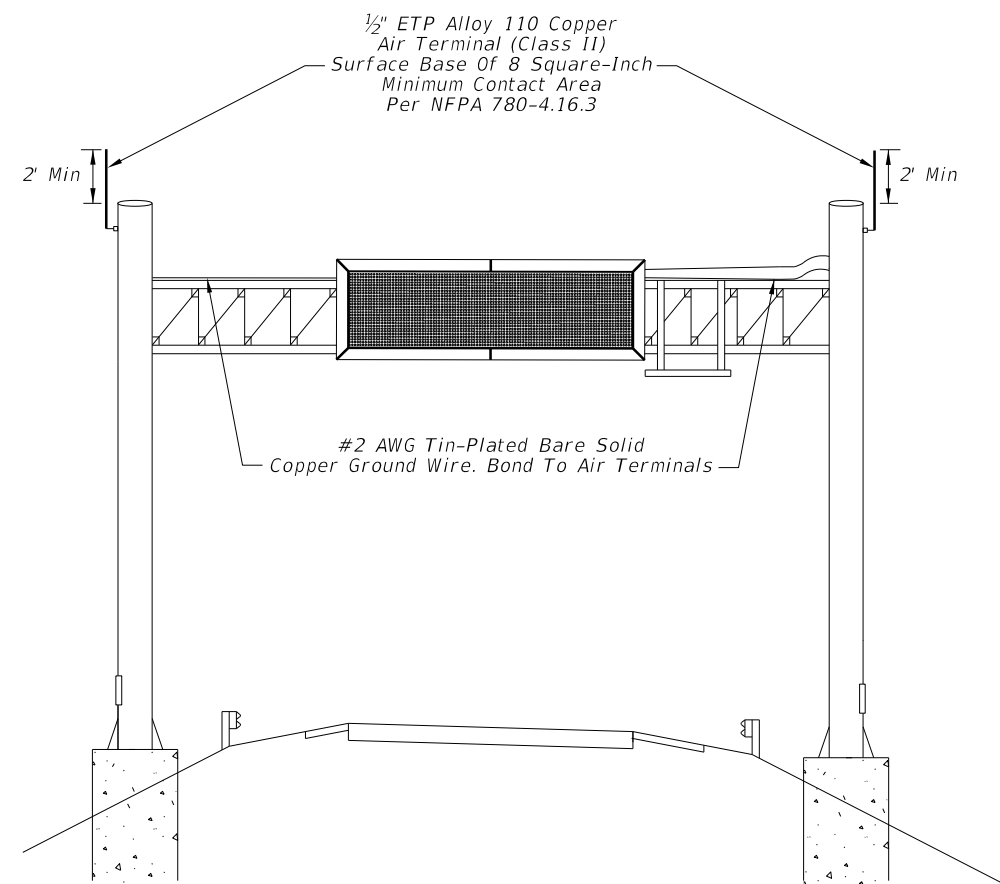
GROUNDING AND LIGHTNING PROTECTION

INDEX NO. 18102

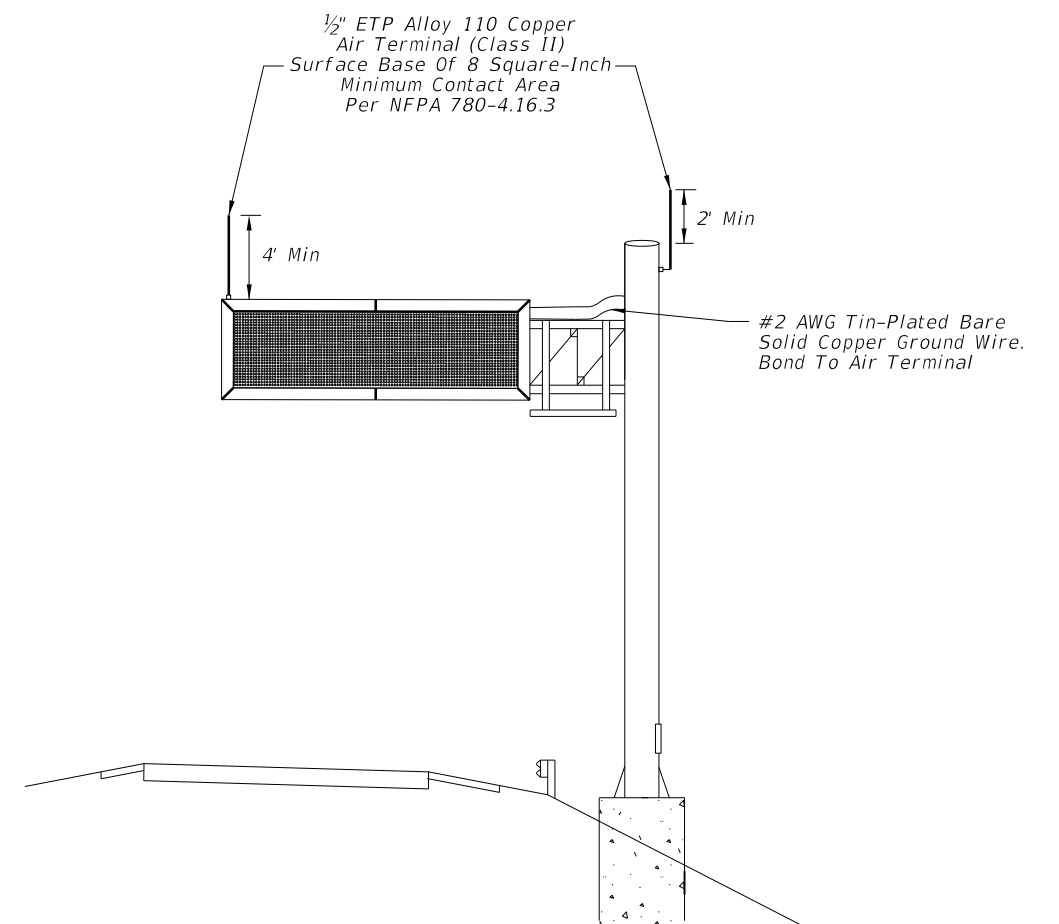
SHEET NO. 1 of 4



AIR TERMINAL PLACEMENT  
(Lowering Device Pole)




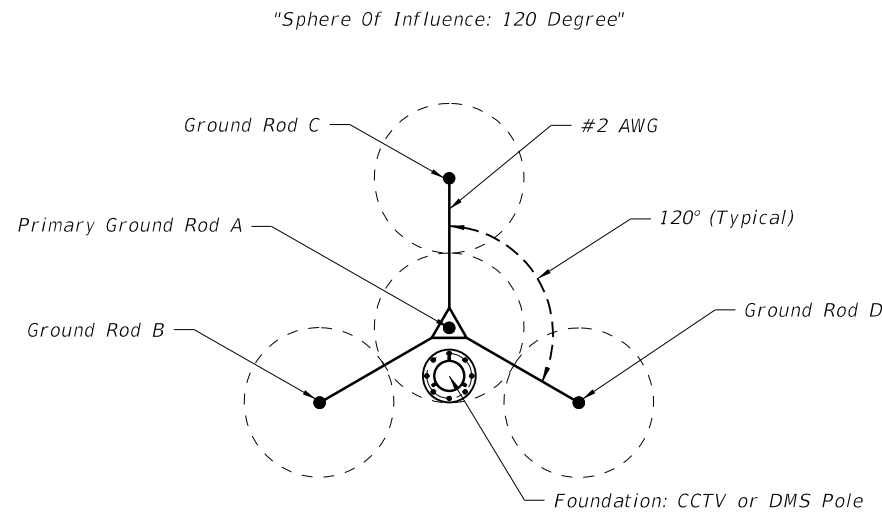
AIR TERMINAL PLACEMENT  
(Span DMS)



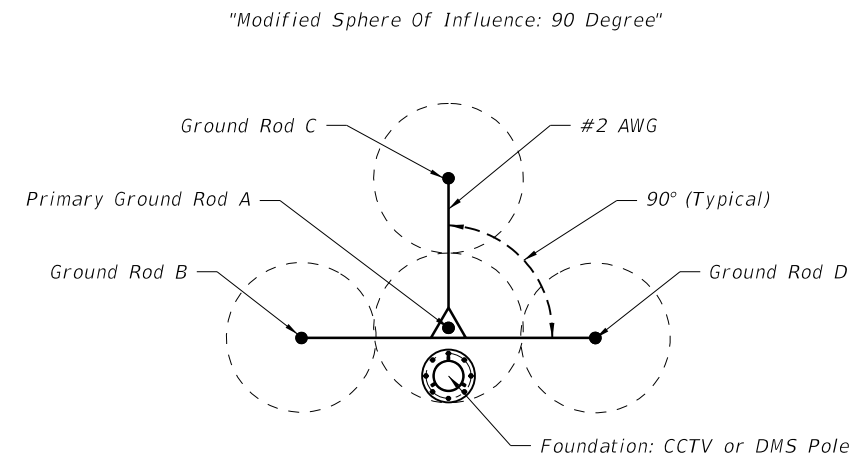
AIR TERMINAL PLACEMENT  
(Cantilever DMS)

6/5/2014 11:54:21 AM

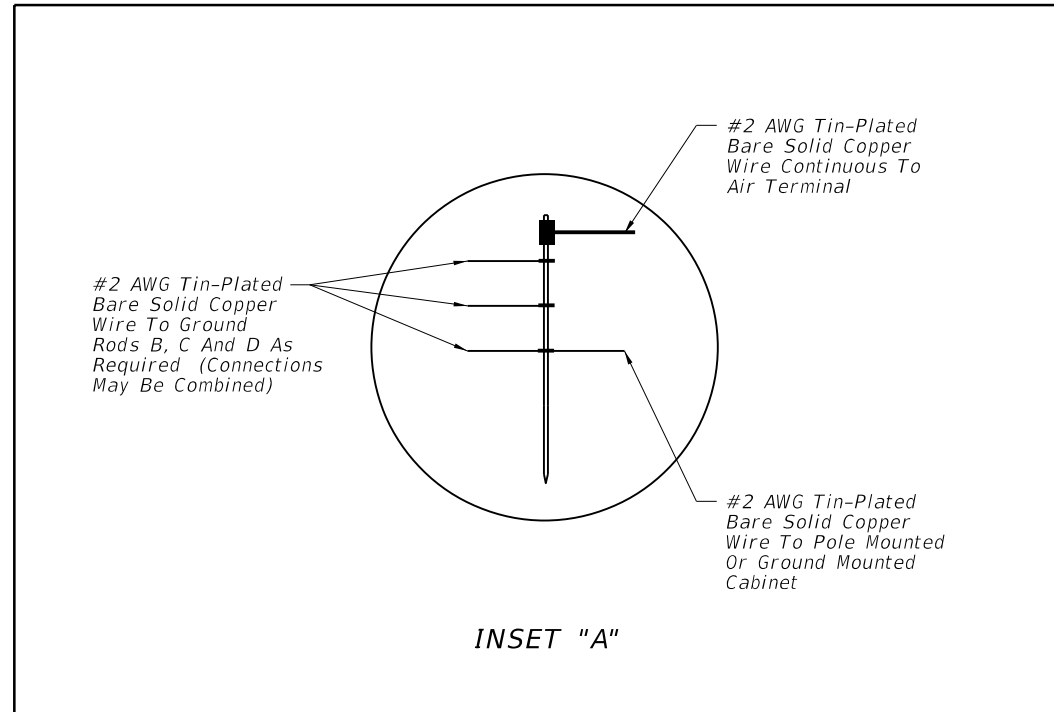
LAST REVISION 07/01/14	REVISION	DESCRIPTION:	 <b>2015 DESIGN STANDARDS</b>	<b>GROUNDING AND LIGHTNING PROTECTION</b>	INDEX NO. <b>18102</b>	SHEET NO. <b>2 of 4</b>
---------------------------	----------	--------------	--	---	---------------------------	----------------------------




**GROUND ROD ARRAY PLACEMENT**  
(Typical)  
20' RODS, 40' SPACING

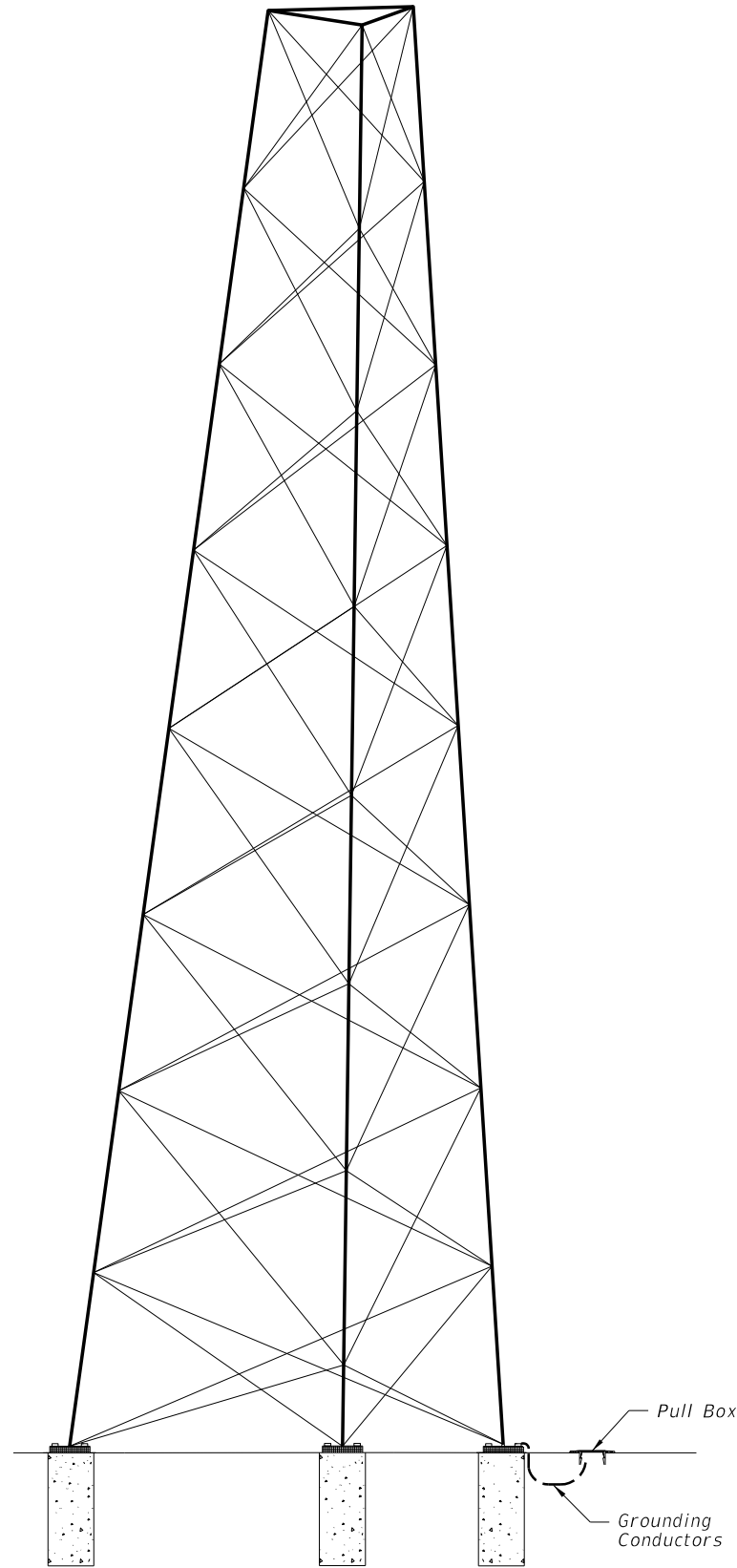


**GROUND ROD ARRAY PLACEMENT**  
(Typical Modified)  
20' RODS, 40' SPACING

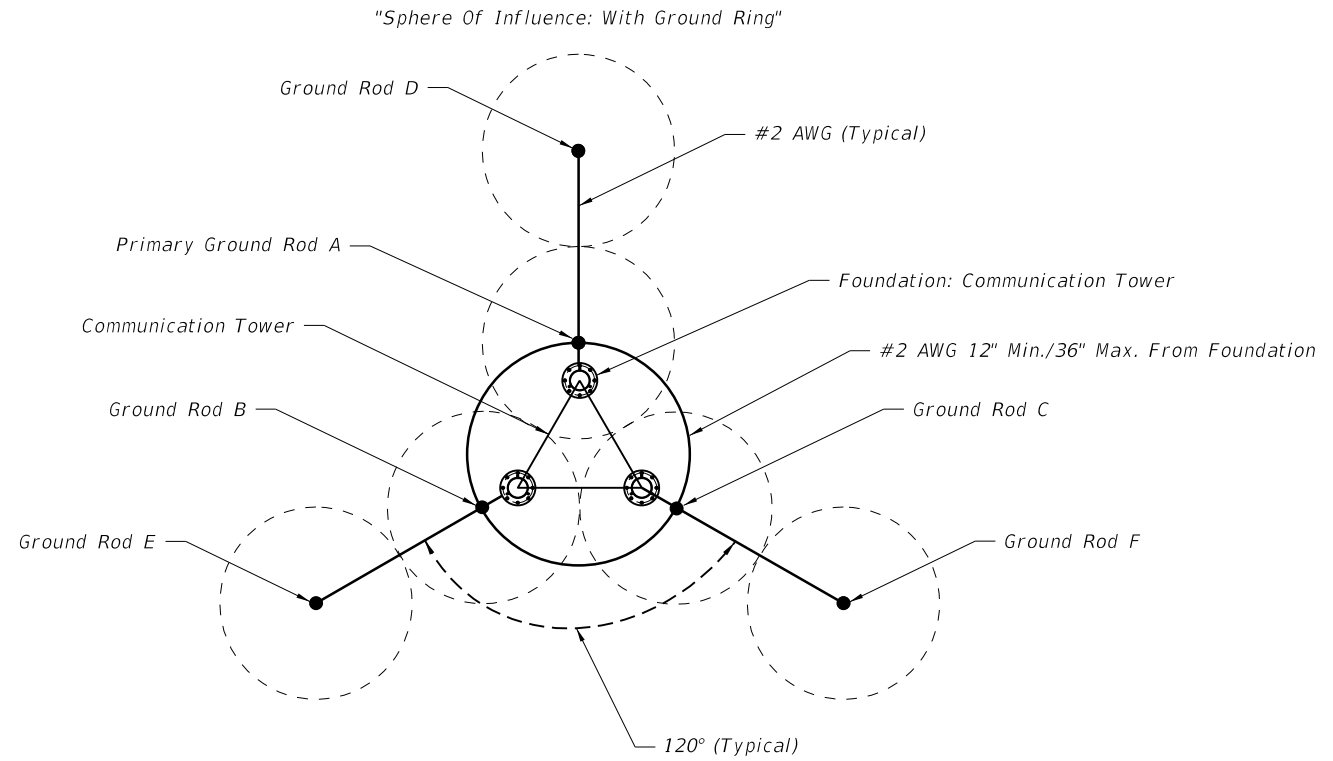


6/5/2014 11:54:22 AM

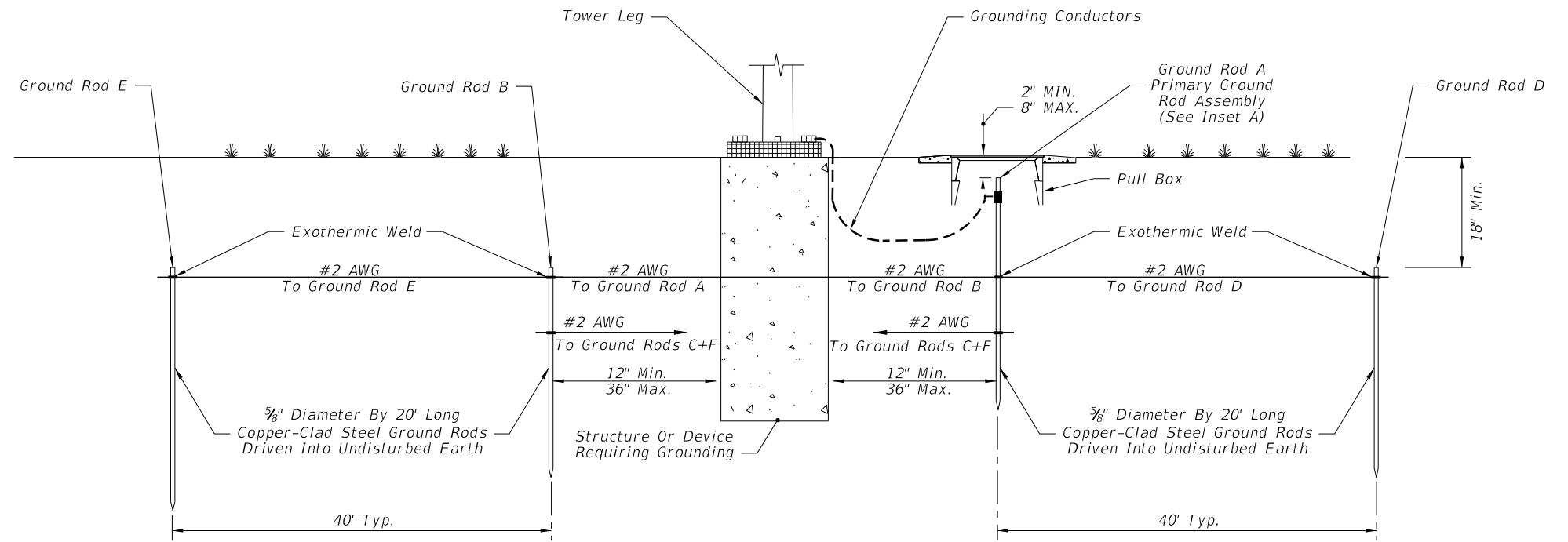
LAST REVISION 07/01/14	REVISION DESCRIPTION:	 <b>2015</b> DESIGN STANDARDS	<b>GROUNDING AND LIGHTNING PROTECTION</b>	INDEX NO. <b>18102</b>	SHEET NO. <b>3 of 4</b>
---------------------------	-----------------------	---	---	---------------------------	----------------------------



COMMUNICATION TOWER



GROUND ROD ARRAY PLACEMENT  
(Communication Tower)  
20' RODS, 40' SPACING



GROUND ROD ARRAY PROFILE  
(Communication Tower)

6/5/2014 11:54:22 AM

LAST REVISION 07/01/14	REVISION	DESCRIPTION:	 2015 DESIGN STANDARDS	GROUNDING AND LIGHTNING PROTECTION	INDEX NO. 18102	SHEET NO. 4 of 4
---------------------------	----------	--------------	------------------------------	------------------------------------	--------------------	---------------------