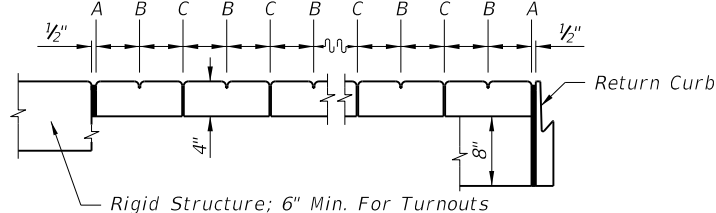


NOTE: "E" Joint(s) Required When Length Exceeds 30'

SAWED JOINTS



OPEN JOINTS

**LONGITUDINAL SECTION
(NOT TO SCALE)**

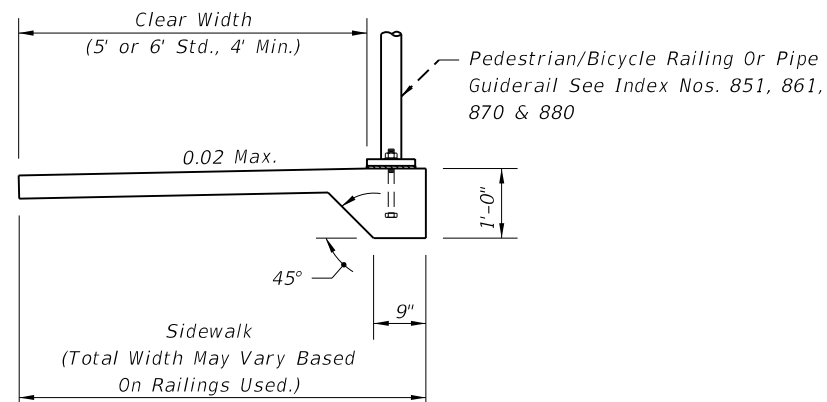
JOINT LEGEND

- A- 1/2" Expansion Joints (Preformed Joint Filler)
- B- 1/8" Dummy Joints, Tooled
- C- 1/8" Formed Open Joints
- D- 3/16" Saw Cut Joints, 1 1/2" Deep (within 96 hours) Max. 5' Centers
- E- 3/16" Saw Cut Joints, 1 1/2" Deep (within 12 hours) Max. 30' Centers
- F- 1/2" Expansion Joint When Run Of Sidewalk Exceeds 120'. Intermediate locations when called for in the plans or at locations as directed by the Engineer.
- G- Cold Joint With Bond Breaker, Tooled

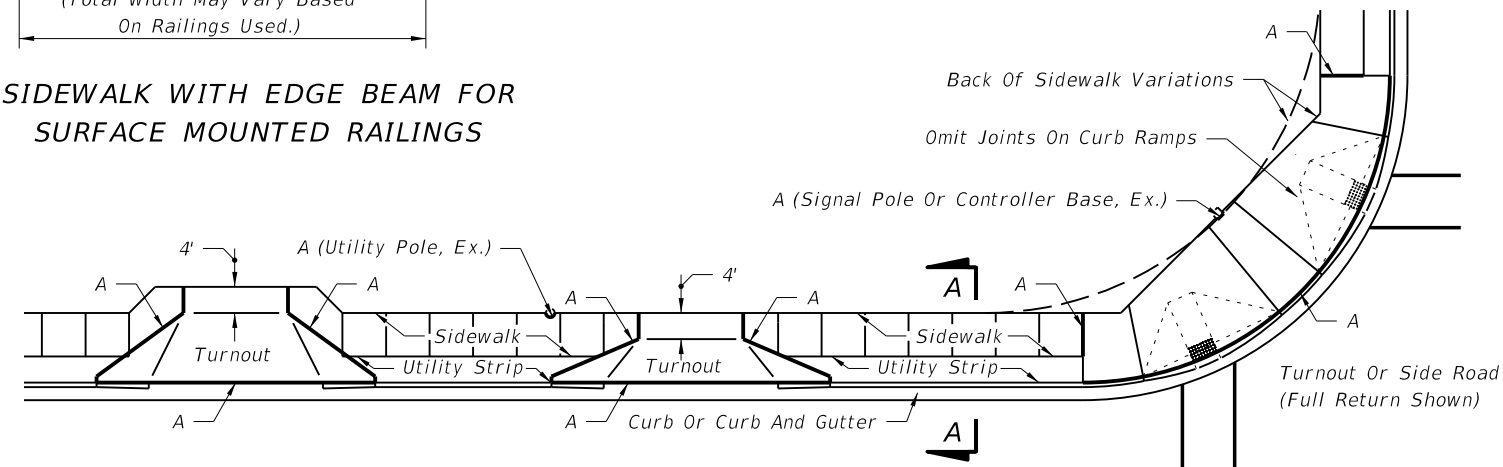
SIDEWALK JOINTS

NOTES FOR CONCRETE SIDEWALK ON CURBED ROADWAYS

1. Sidewalks shall be constructed in accordance with Specification Section 522. Sidewalk curb ramps shall include detectable warnings and be constructed in accordance with Index No. 304. Detectable warnings are not required where sidewalks intersect urban flared turnouts.
2. Bond breaker material can be any impermeable coated or sheet membrane or preformed material having a thickness of not less than 6 mils nor more than 1/2".
3. For turnouts see Index No. 515.
4. Construct sidewalks with 1' thick Edge Beam through the limits of any surface mounted Pedestrian/Bicycle Picket Railing or Pipe Guiderail shown in the plans.

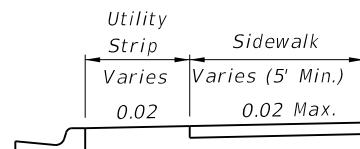


**SIDEWALK WITH EDGE BEAM FOR
SURFACE MOUNTED RAILINGS**

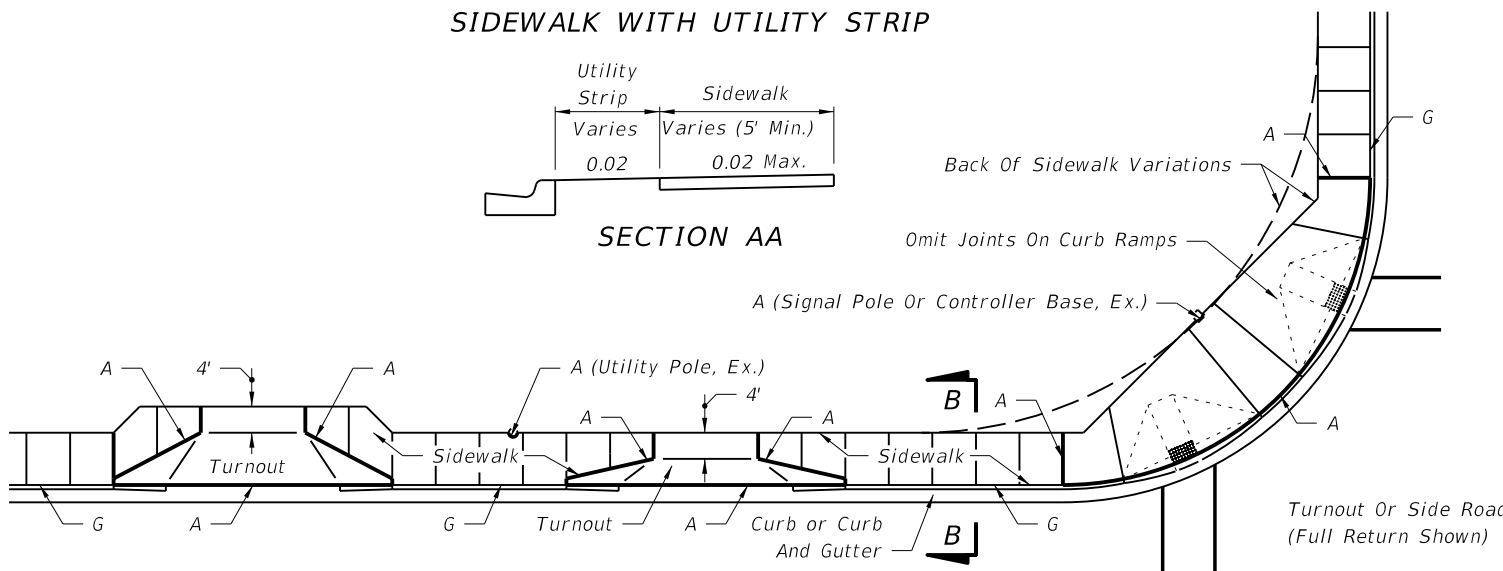


PLAN

SIDEWALK WITH UTILITY STRIP

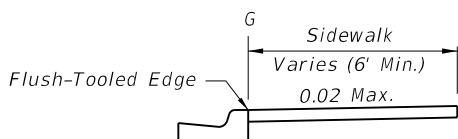


SECTION AA



PLAN

SIDEWALK WITHOUT UTILITY STRIP

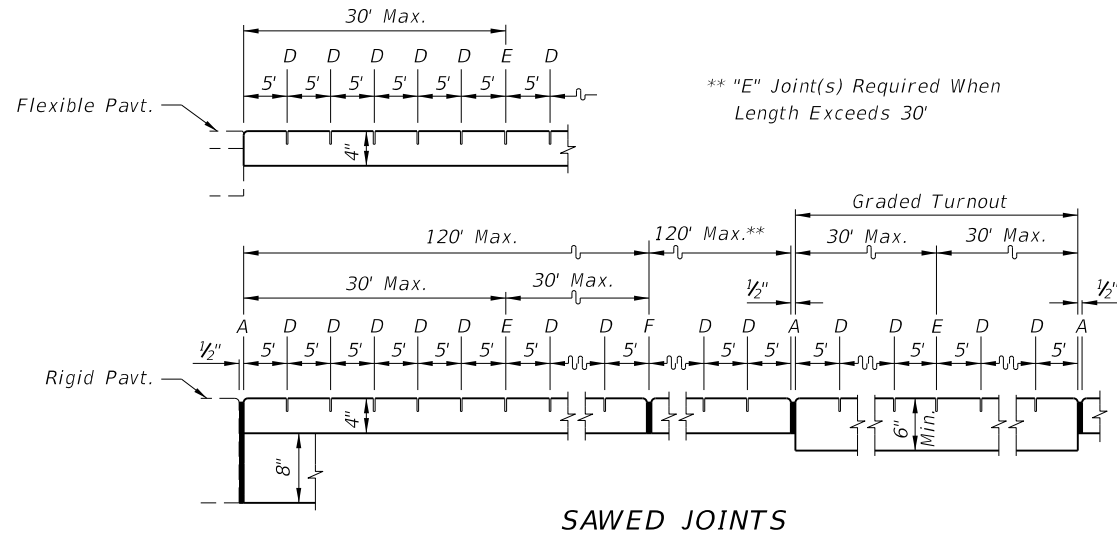


SECTION BB

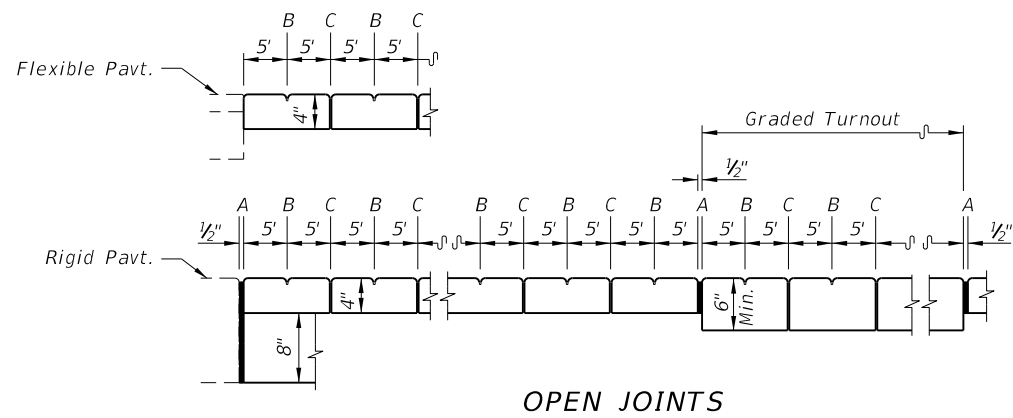
CONCRETE SIDEWALK ON CURBED ROADWAYS

5/20/2014 3:03:13 PM

LAST REVISION 07/01/13	REVISION	DESCRIPTION:	 2015 DESIGN STANDARDS	CONCRETE SIDEWALK	INDEX NO. 310	SHEET NO. 1 of 2
---------------------------	----------	--------------	-------------------------------------	--------------------------	-------------------------	----------------------------



** "E" Joint(s) Required When Length Exceeds 30'



LONGITUDINAL SECTIONS
(NOT TO SCALE)

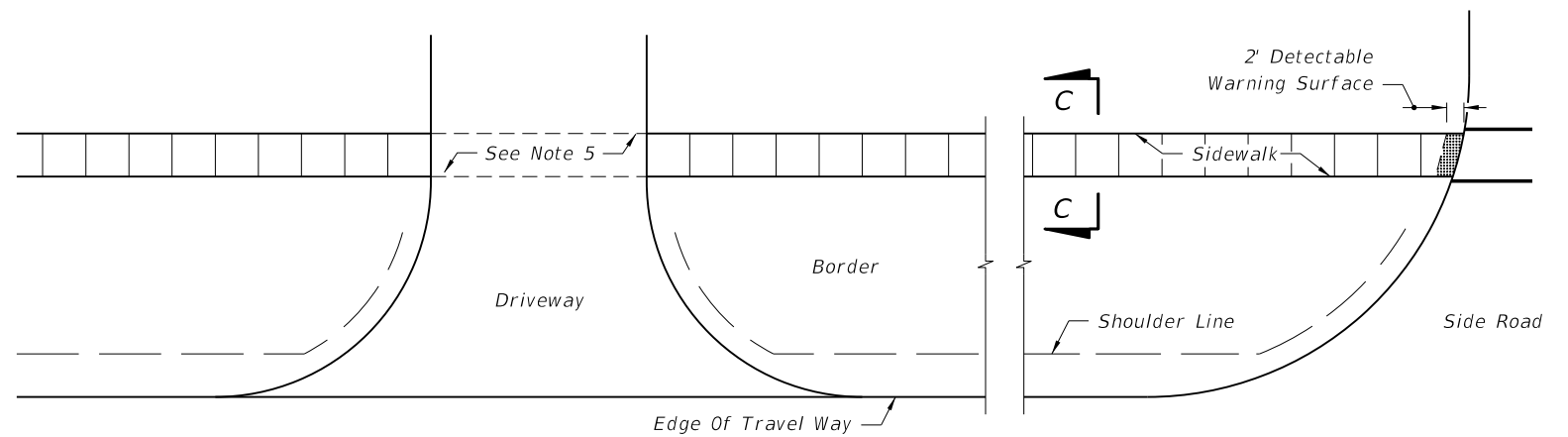
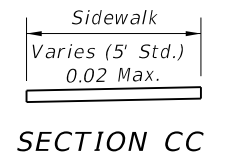
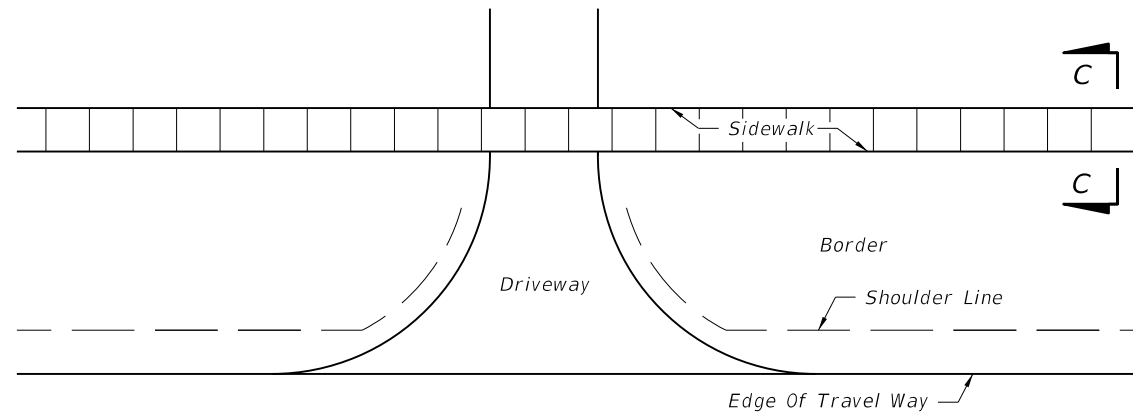
JOINT LEGEND

- A- 1/2" Expansion Joints (Preformed Joint Filler)
- B- 5/8" Dummy Joints, Tooled
- C- 3/16" Formed Open Joints
- D- 3/16" Saw Cut Joints, 1 1/2" Deep (96 Hour) Max. 5' Centers
- E- 1/2" Saw Cut Joints, 1 1/2" Deep (12 Hour) Max. 30' Centers
- F- 1/2" Expansion Joint When Run Of Sidewalk Exceeds 120'. Intermediate locations when called for in the plans or at locations as directed by the Engineer.

SIDEWALK JOINTS

NOTES FOR CONCRETE SIDEWALKS ON UNCURBED ROADWAYS

1. Sidewalks shall be constructed in accordance with Specification Section 522.
2. Detectable Warnings shall conform to the requirements described in Index No. 304. Detectable Warnings are not required for sidewalks that run continuous through driveways.
3. For TURNOUTS see Index No. 515.
4. Construct sidewalks with a 1'-0" thick Edge Beam through the limits of any surface mounted Pedestrian/Bicycle Picket Railing or Pipe Guiderail shown in the plans (see SIDEWALK WITH EDGE BEAM FOR SURFACE MOUNTED RAILINGS detail).
5. When driveways are newly constructed, reconstructed, or altered, cross slopes for discontinuous sidewalks shall not exceed 0.02.



CONCRETE SIDEWALK ON UNCURBED ROADWAYS

5/20/2014 3:03:13 PM

LAST REVISION 07/01/13	REVISION	DESCRIPTION:	2015 DESIGN STANDARDS	CONCRETE SIDEWALK	INDEX NO. 310	SHEET NO. 2 of 2
---------------------------	----------	--------------	------------------------------	--------------------------	-------------------------	----------------------------