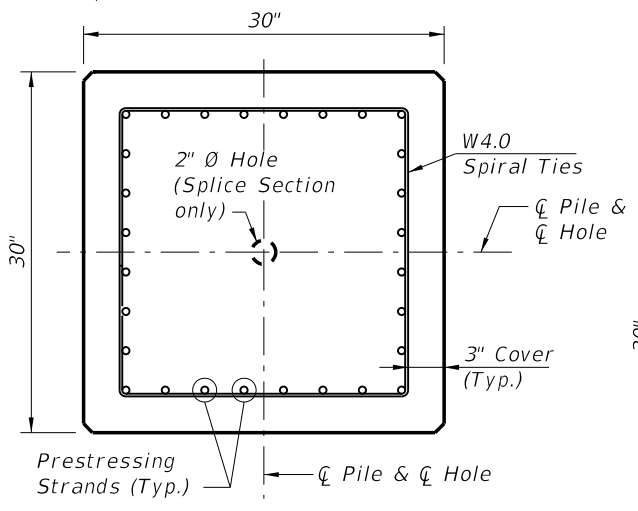
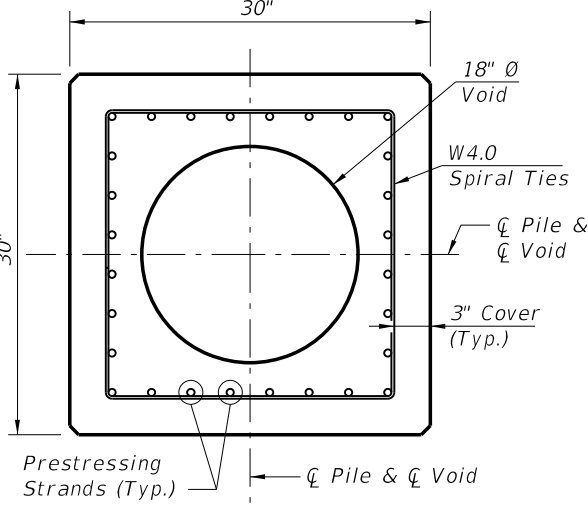


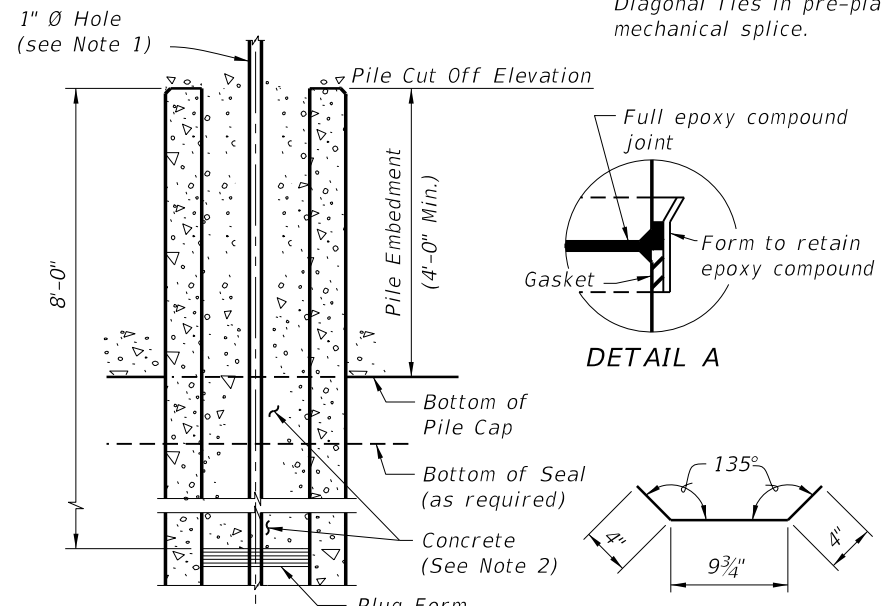
SECTION D-D
SECTION THRU PILE COLLAR



SECTION A-A

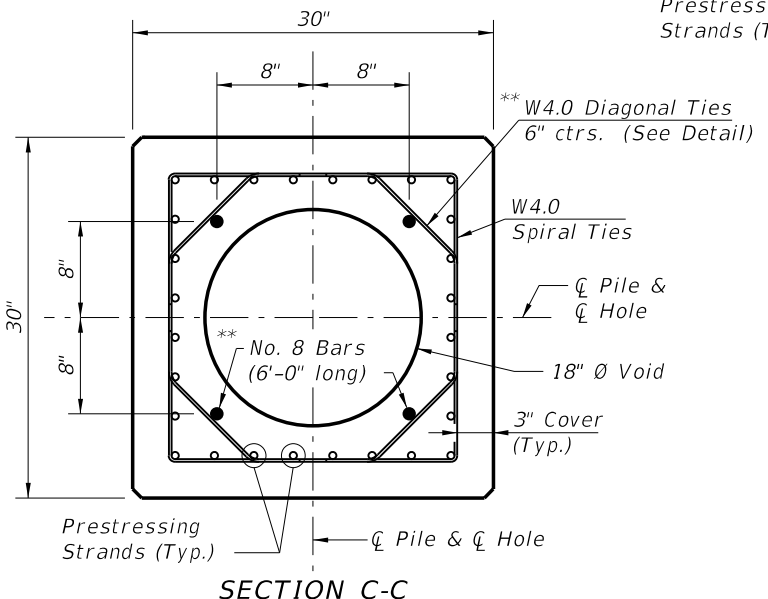


SECTION B-B



SECTION THROUGH PILE AT PILE CAP

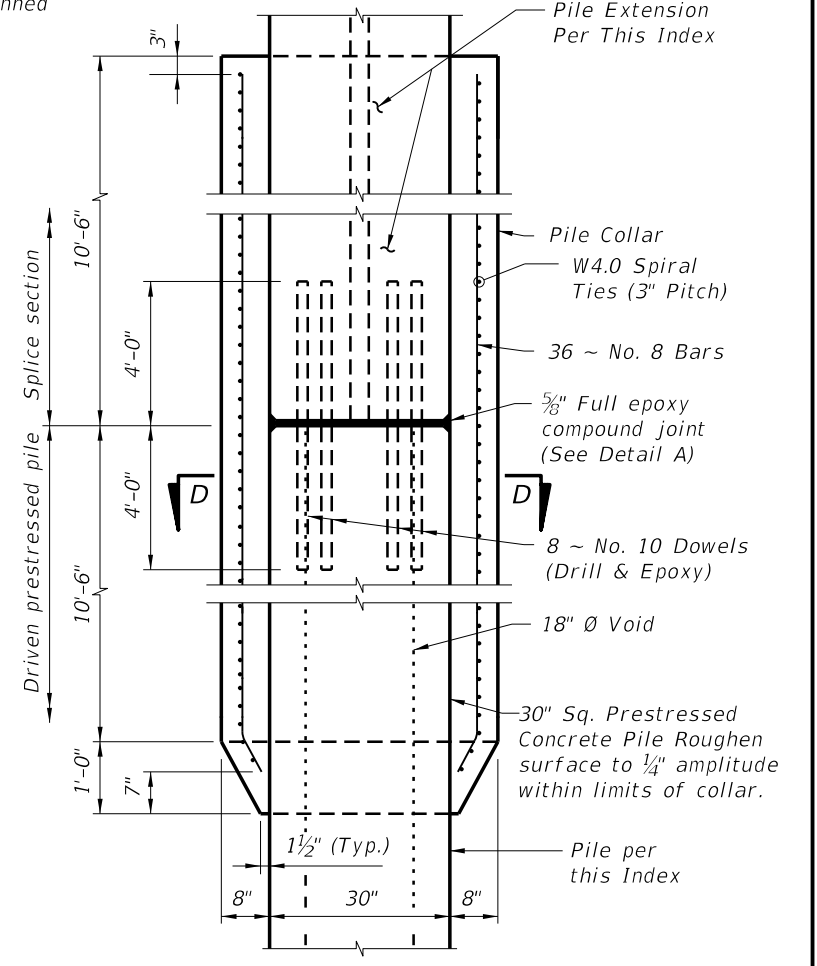
W4.0 DIAGONAL TIE
DETAIL



SECTION C-C


STRAND PATTERN
28 ~ 0.6" Ø, Grade 270 LRS, at 29.5 kips

- NOTES:
- Venting shall be provided by the use of a 1" Ø PVC conduit through a substructure cap or column. Voids between segments of spliced piles shall be connected by 2" Ø hole(s).
 - After the pile is driven and cut to grade, the top 8'-0" of the 18" Ø Void shall be filled with concrete. Prior to filling the top 8'-0" of the 18" Ø Void with concrete, strip the cardboard form material from the void. A stay-in-place corrugated thin wall galvanized pipe may be used to form the void in lieu of the cardboard form material. The concrete fill material shall be of the same type and strength as called for in the pile cap and paid for as substructure concrete.
 - Collar concrete shall reach a strength of 6,000 psi before pile driving is resumed.
 - Work this Index with Index No. 20600 - Notes and Details for Square Prestressed Concrete Piles.



DETAIL OF PILE COLLAR FOR HIGH MOMENT CAPACITY 30" SQUARE PRESTRESSED PILE - PILE SPLICE DETAIL-

C:\projects\standards\structures\current\ready\4release\2014\BOK\20631-1of1.dgn
sm970re
7:56:50 PM
6/24/2013

LAST REVISION 01/01/12	DESCRIPTION:	 FDOT 2014 DESIGN STANDARDS	HIGH MOMENT CAPACITY 30" SQUARE PRESTRESSED CONCRETE PILE	INDEX NO. 20631	SHEET NO. 1 of 1