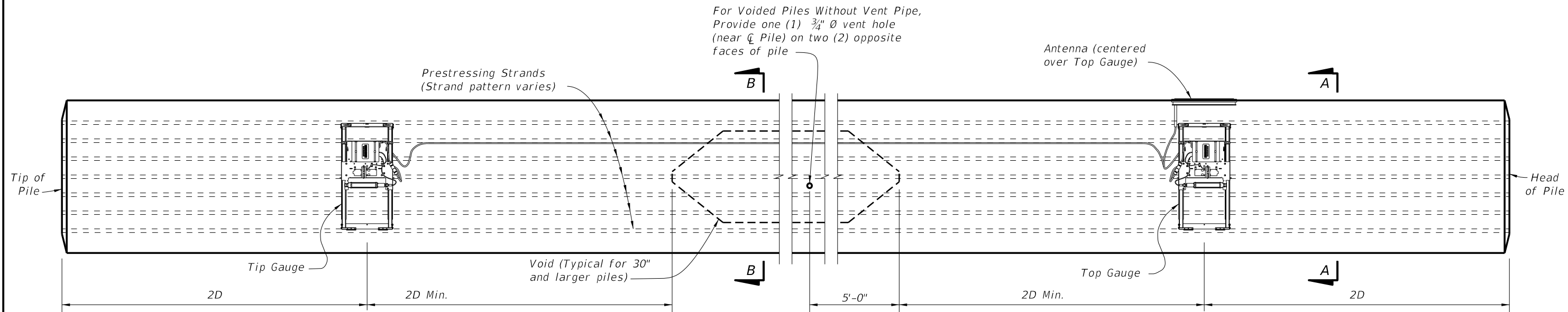
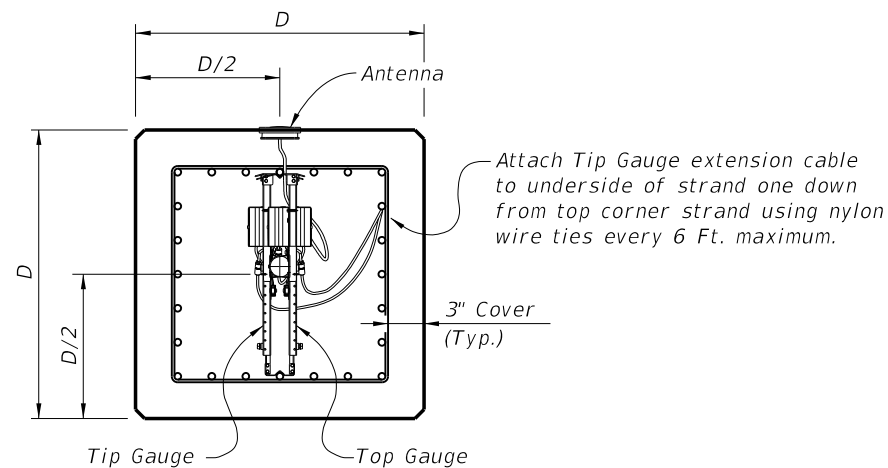


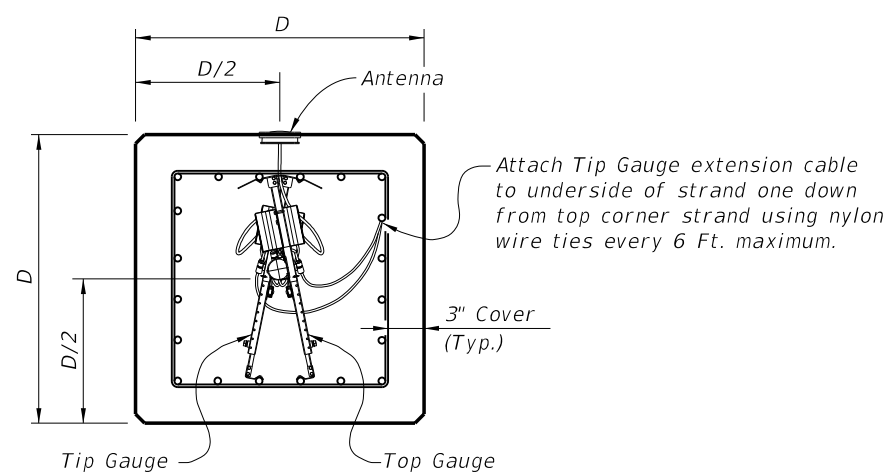
C:\projects\standards\structures\current\ready\4release\2014\BOOK\20602-1of1.dgn  
 sm970re  
 7:54:27 PM  
 6/24/2013



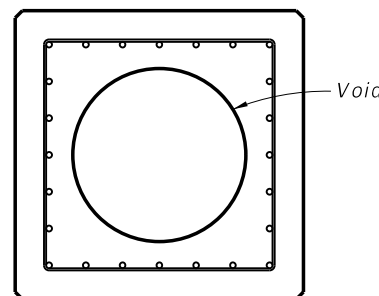
ELEVATION



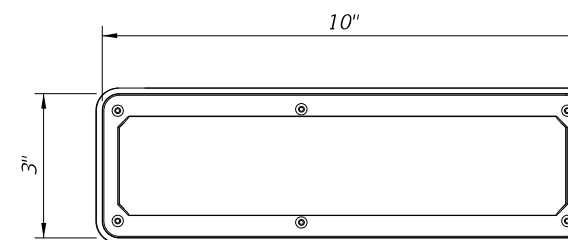
SECTION A-A  
(Strand Pattern with odd number of strands per face)



SECTION A-A  
(Strand Pattern with even number of strands per face)

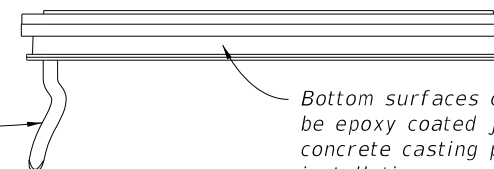


SECTION B-B  
(Showing Voided Pile, Solid Pile Similar)



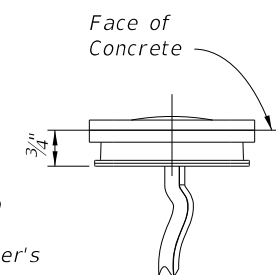
ANTENNA TOP VIEW

Dataport Interface Cable (to radio module assembly)




ANTENNA SIDE VIEW

Bottom surfaces of enclosure to be epoxy coated just prior to concrete casting per manufacturer's installation procedures.



ANTENNA END VIEW

NOTE:  
Provide EDC Instrumentation in square prestressed concrete piles (18" and larger) in accordance with Specification Section 455 for bridge foundations.

LAST REVISION 07/01/12	REVISION	DESCRIPTION:	 <b>FDOT 2014 DESIGN STANDARDS</b>	<b>EDC INSTRUMENTATION FOR SQUARE PRESTRESSED CONCRETE PILES</b>	INDEX NO. <b>20602</b>	SHEET NO. <b>1 of 1</b>
---------------------------	----------	--------------	--	--	---------------------------	----------------------------