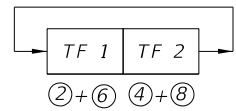
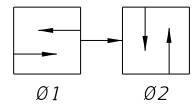
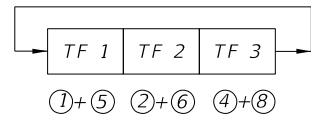
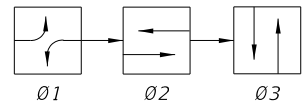


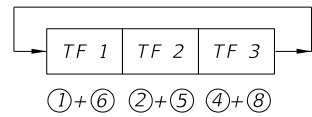
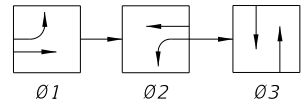
6/24/2013 7:32:42 PM sm970re C:\projects\standards\roadway\17800-s\17870-01.dgn



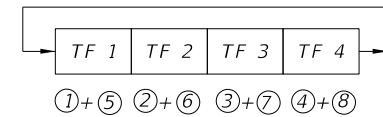
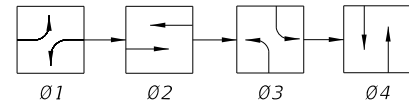
SOP 1



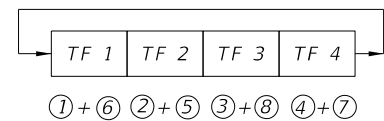
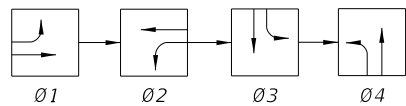
SOP 2



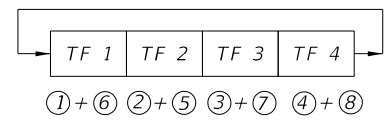
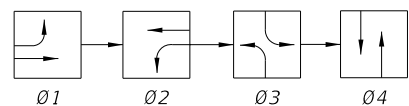
SOP 3



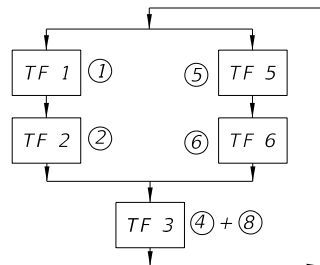
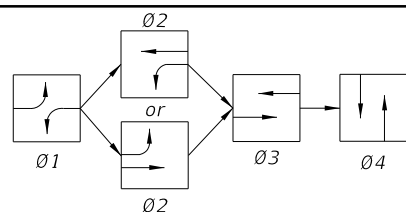
SOP 4



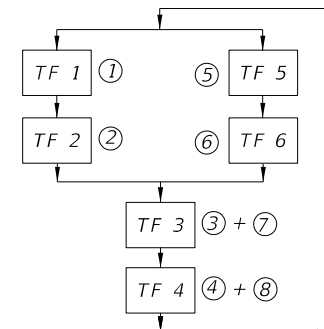
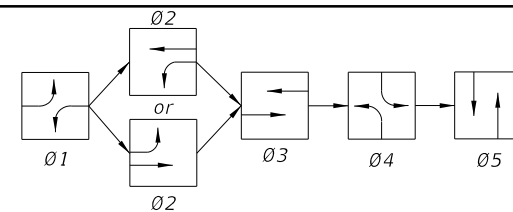
SOP 5



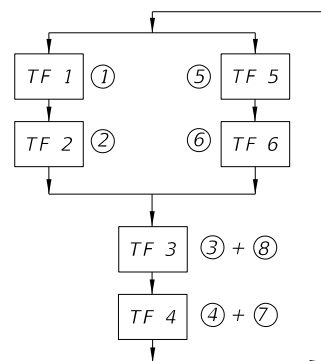
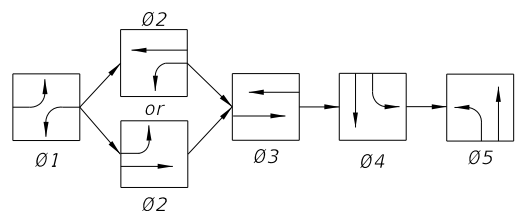
SOP 6



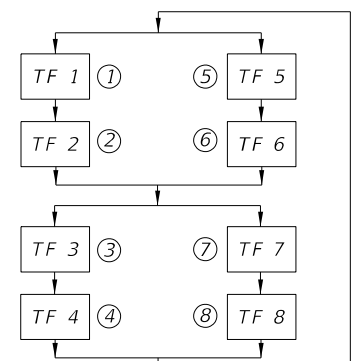
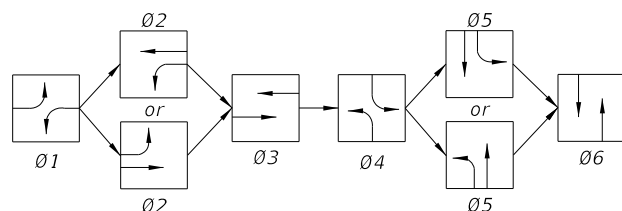
SOP 7



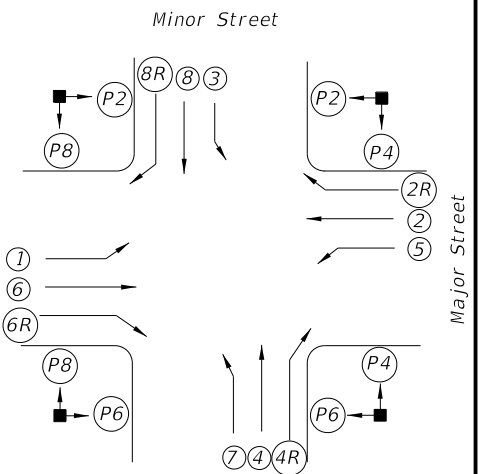
SOP 8



SOP 9



SOP 10



SIGNALIZED INTERSECTION

Vehicle movements & signal head number assignments are not directionally oriented but shall maintain their relative orientation about the intersection (I.E., movements 7 and 4 are always to the right of movements 1 and 6 etc.).

LEGEND

- (X) Vehicle Movement Number
- (PX) Pedestrian Movement Number
- TF X Timing Function Number
- 0X Phase Number
- ←G Green Arrow (Left or Right)
- ←R Red Arrow
- ←Y Yellow Arrow

SIGNAL CLEARANCE TABLE
(Blank Indicates No Clearance Required)

From \ To	SIGNAL INDICATIONS						
	R	←R	G	←G	↑	WALK	DONT WALK
R			Y	←Y	Y		
←R			Y	←Y	Y		
G				←G			
←G							
↑							
WALK							
DONT WALK						Flash DONT WALK	

LAST REVISION 07/01/05

DESCRIPTION:



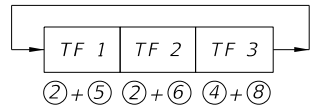
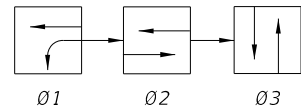
FDOT 2014 DESIGN STANDARDS

STANDARD SIGNAL OPERATING PLANS

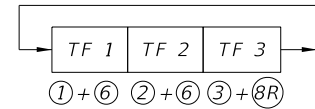
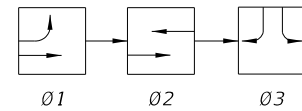
INDEX NO. 17870

SHEET NO. 1 of 2

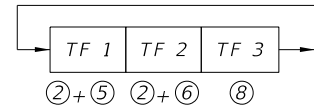
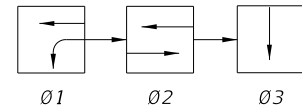
C:\projects\standards\roadway\17800-s\17870-02.dgn
sm970re
7:32:44 PM
6/24/2013



SOP 11

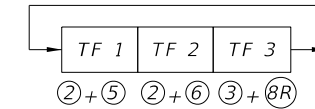
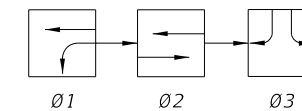


SOP 12



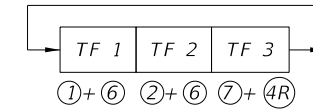
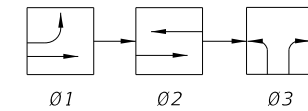
SOP 13

(ONE-WAY STREET INTERSECTION)



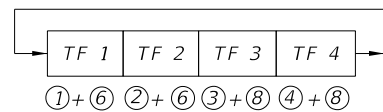
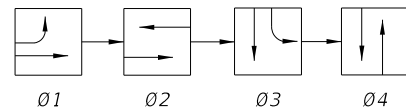
SOP 14

(DIAMOND INTERCHANGE OPERATION)

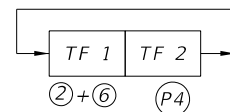
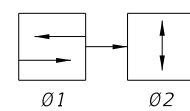


SOP 15

(DIAMOND INTERCHANGE OPERATION)

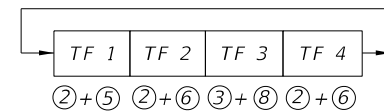
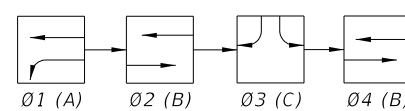


SOP 16



SOP 17

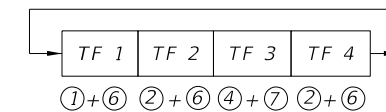
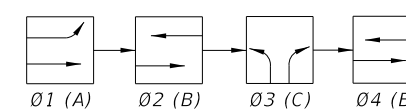
(MIDBLOCK)



SOP 18

(DIAMOND INTERCHANGE OPERATIONS)

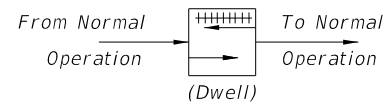
NOTE:
Only 02 Or 04 Used, Not Both To Obtain
ABC, Or ACB Operation.



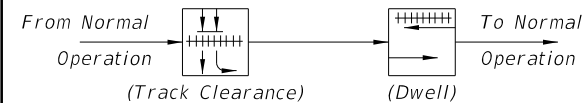
SOP 19

(DIAMOND INTERCHANGE OPERATIONS)

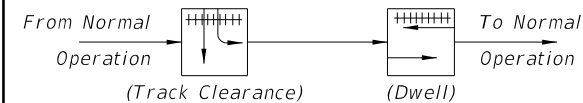
NOTE:
Only 02 Or 04 Used, Not Both To Obtain
ABC, Or ACB Operation.



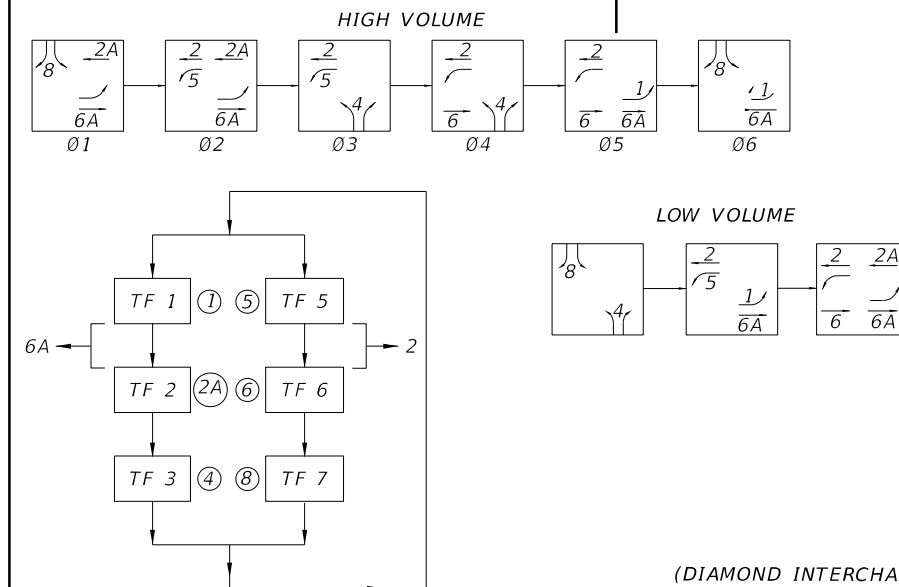
POP 1



POP 2



POP 3



SOP 20

(DIAMOND INTERCHANGE OPERATIONS)

LAST REVISION
07/01/00

REVISION

DESCRIPTION:



FDOT 2014
DESIGN STANDARDS

STANDARD SIGNAL OPERATING PLANS

INDEX NO.
17870

SHEET NO.
2 of 2