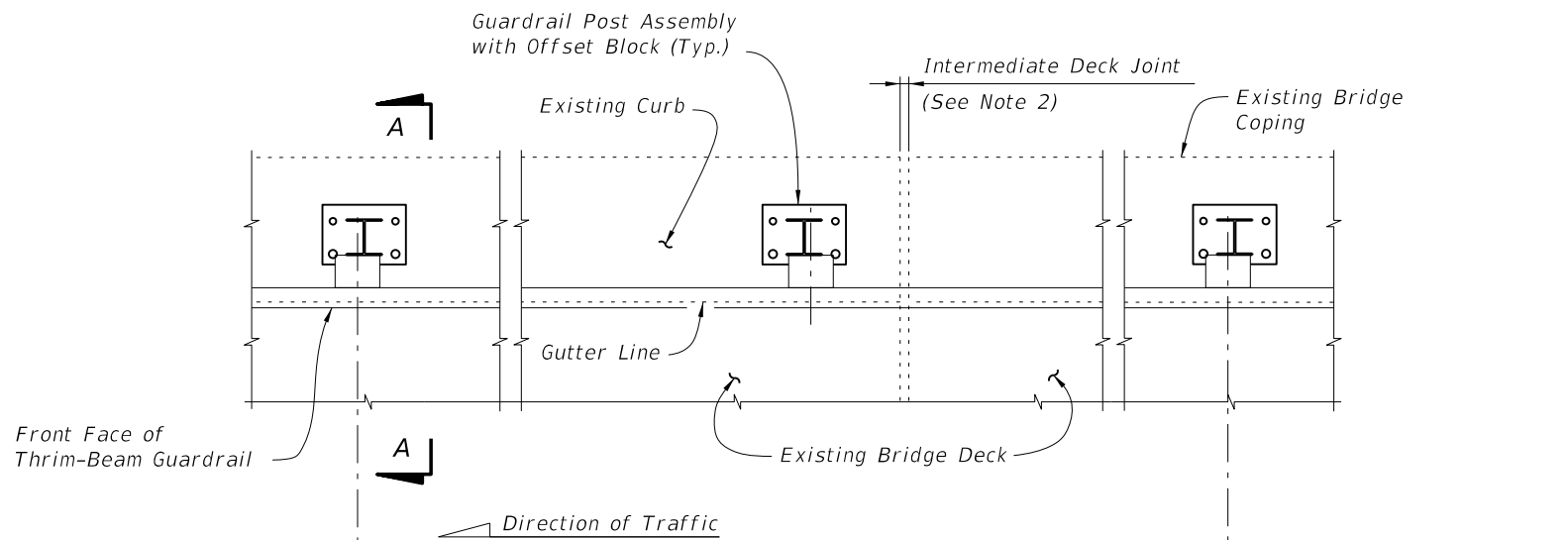


C:\projects\standards\structures\current\ready\4release\2014B00K\0047-4-1of4.dgn  
 sm970re  
 5:48:10 PM  
 6/24/2013



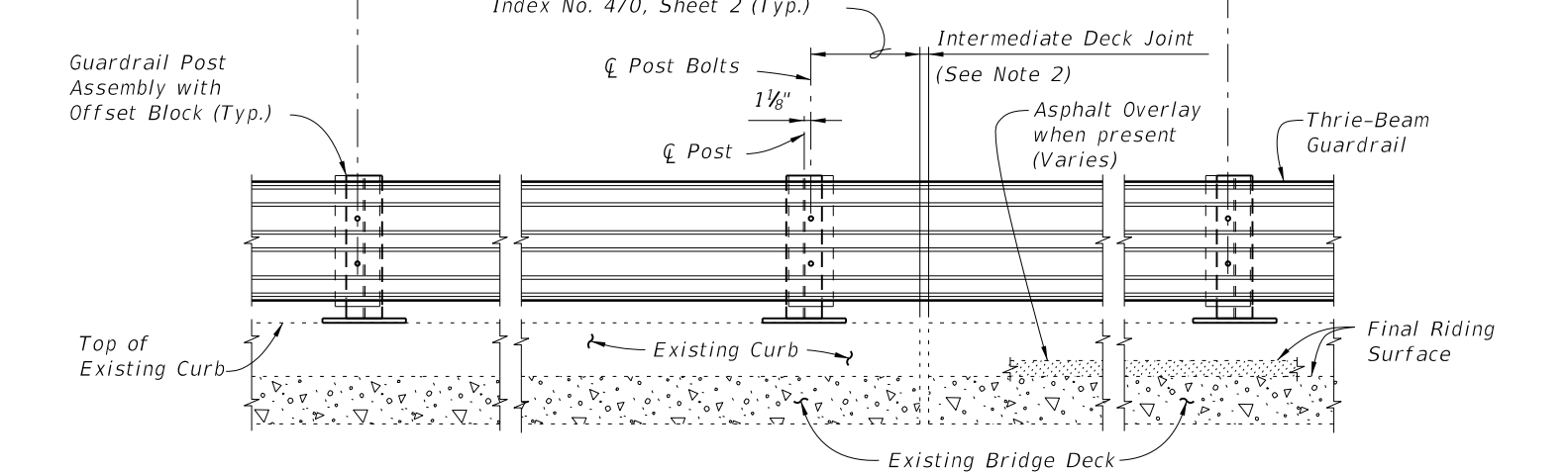
PARTIAL PLAN OF RAILING

6'-3" spacing (Typ. except as noted along Bridge, see Note 2)

1'-6" Min. for non skewed joints. For treatment of skewed Intermediate Deck Joints see Skew Detail Index No. 470, Sheet 2 (Typ.)

☉ Post Bolts and Match Line (Trailing End) (See Sheets 3 and 4)

☉ Post Bolts and Match Line (Approach End) (See Sheets 3 and 4)




PARTIAL ELEVATION OF INSIDE FACE OF RAILING

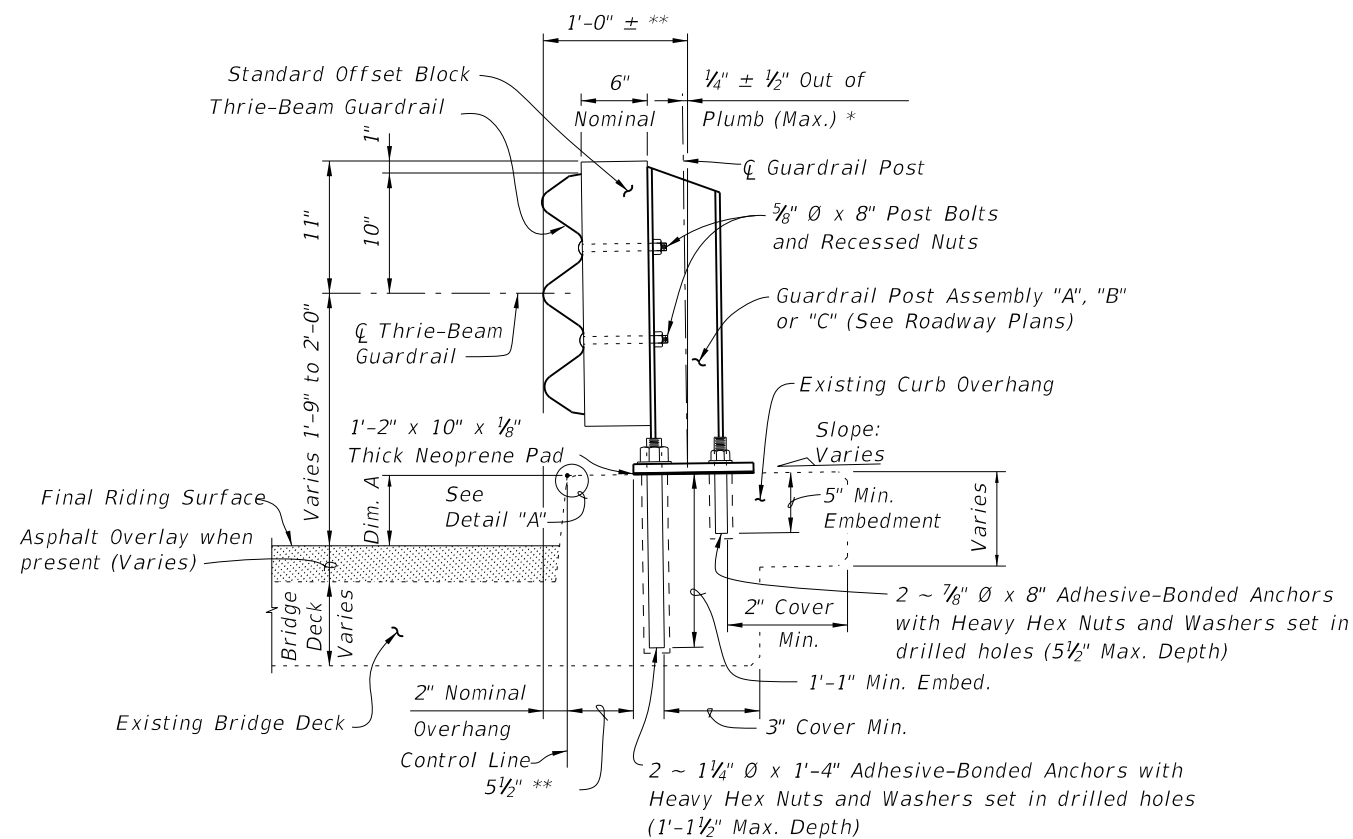
==== TYPICAL TREATMENT OF RAILING ALONG BRIDGE ====

- NOTES:
1. On approach end provide Index No. 402 (as shown) or other site specific treatment, see Roadway Plans. For treatment of trailing end see Roadway Plans.
  2. Actual joint dimension and orientation vary. For Intermediate Deck Joints use the Modified Post Spacing at Intermediate Deck Joints Detail, Index No. 470, Sheet 2, as required.
  3. Areas where existing structure has been removed shall match adjoining areas and shall be finished flat by grouting or grinding as required. Exposed existing reinforcing steel shall be burned off 1" below existing concrete and grouted over.

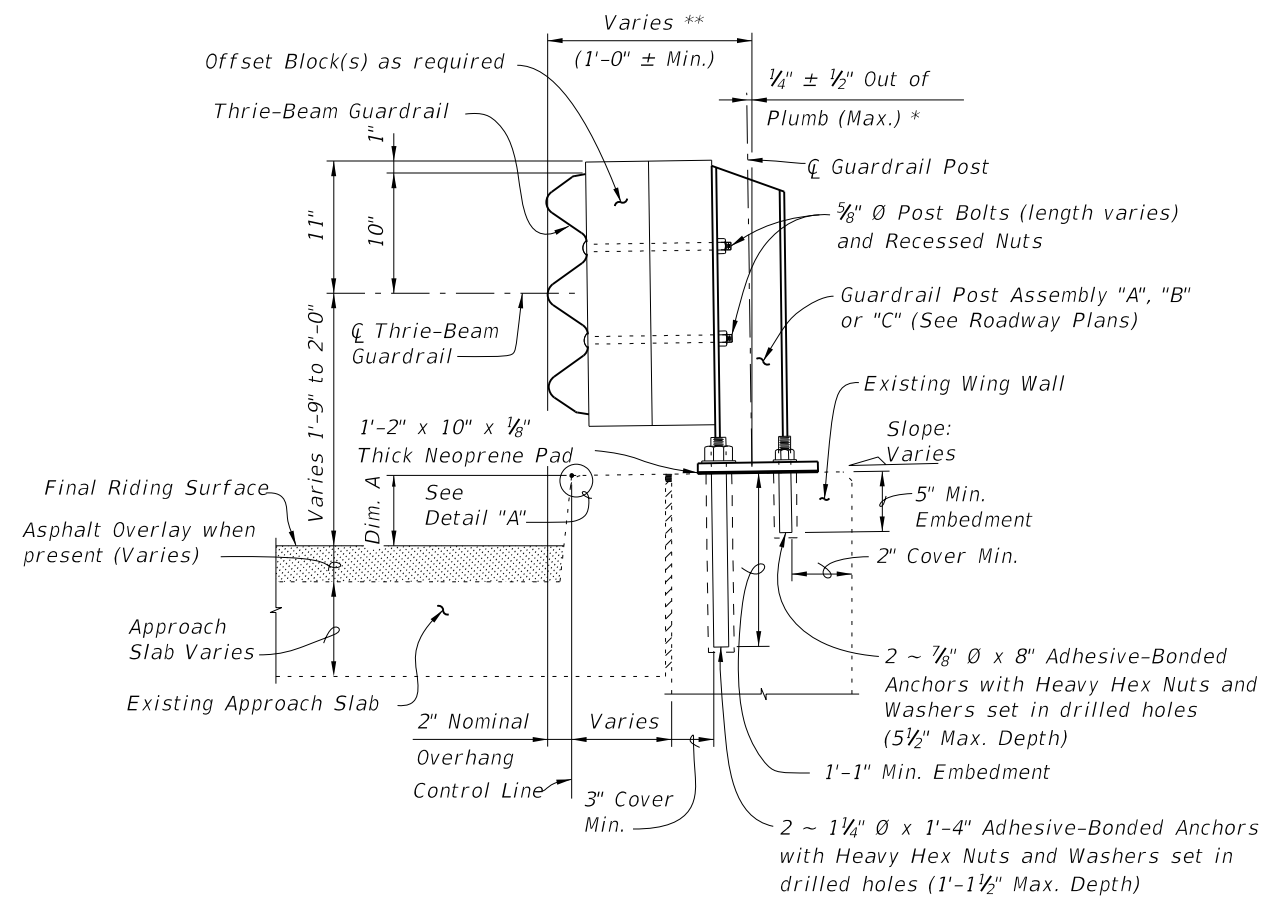
CROSS REFERENCES:  
 For Match Line see Sheets 3 & 4.  
 For Section A-A see Sheet 2.  
 For Traffic Railing Notes and Details see Index No. 470.

LAST REVISION	01/01/08	REVISION	DESCRIPTION:	 <b>FDOT 2014          DESIGN STANDARDS</b>	<b>TRAFFIC RAILING - (THRIE-BEAM RETROFIT)          INTERMEDIATE CURB</b>	INDEX NO. <b>474</b>	SHEET NO. <b>1 of 4</b>
---------------	----------	----------	--------------	---	---	-------------------------	----------------------------

6/24/2013 5:48:12 PM sm970re C:\projects\standards\structures\current\ready\4release\2014BOOK\00474-2of4.dgn



**SECTION A-A**  
TYPICAL SECTION THRU RAILING ON BRIDGE DECK



**SECTION B-B (SCHEME 2)**  
TYPICAL SECTION THRU RAILING ALONG APPROACH SLAB

\* Shim with washers around Anchor Bolts and Anchors as required to maintain tolerance.

\*\* Offset may vary  $\pm 1"$  for Adhesive-Bonded Anchors to clear existing curb reinforcing and provide minimum edge clearance. Offset shall be consistent along length of bridge.

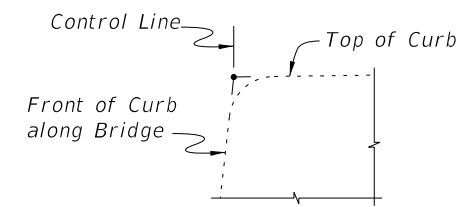
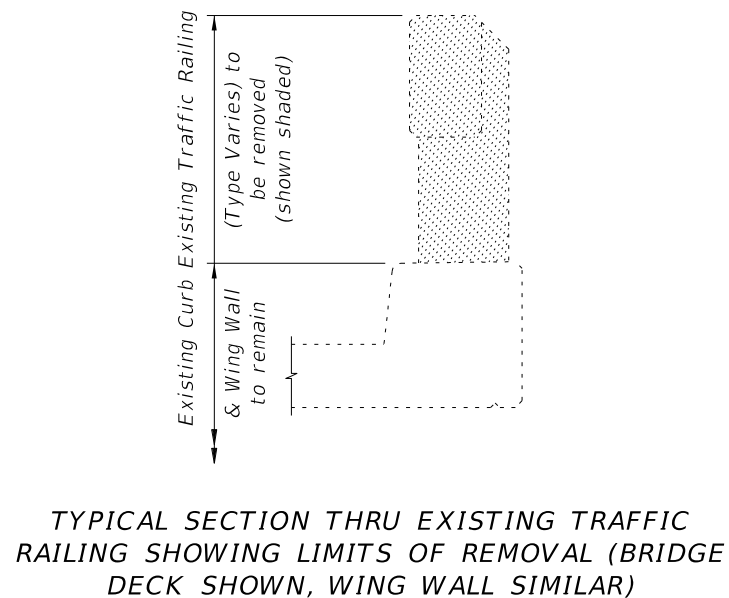
BILL OF REINFORCING STEEL		
MARK	SIZE	LENGTH
L	4	4'-1"

BAR BENDING DIAGRAM	

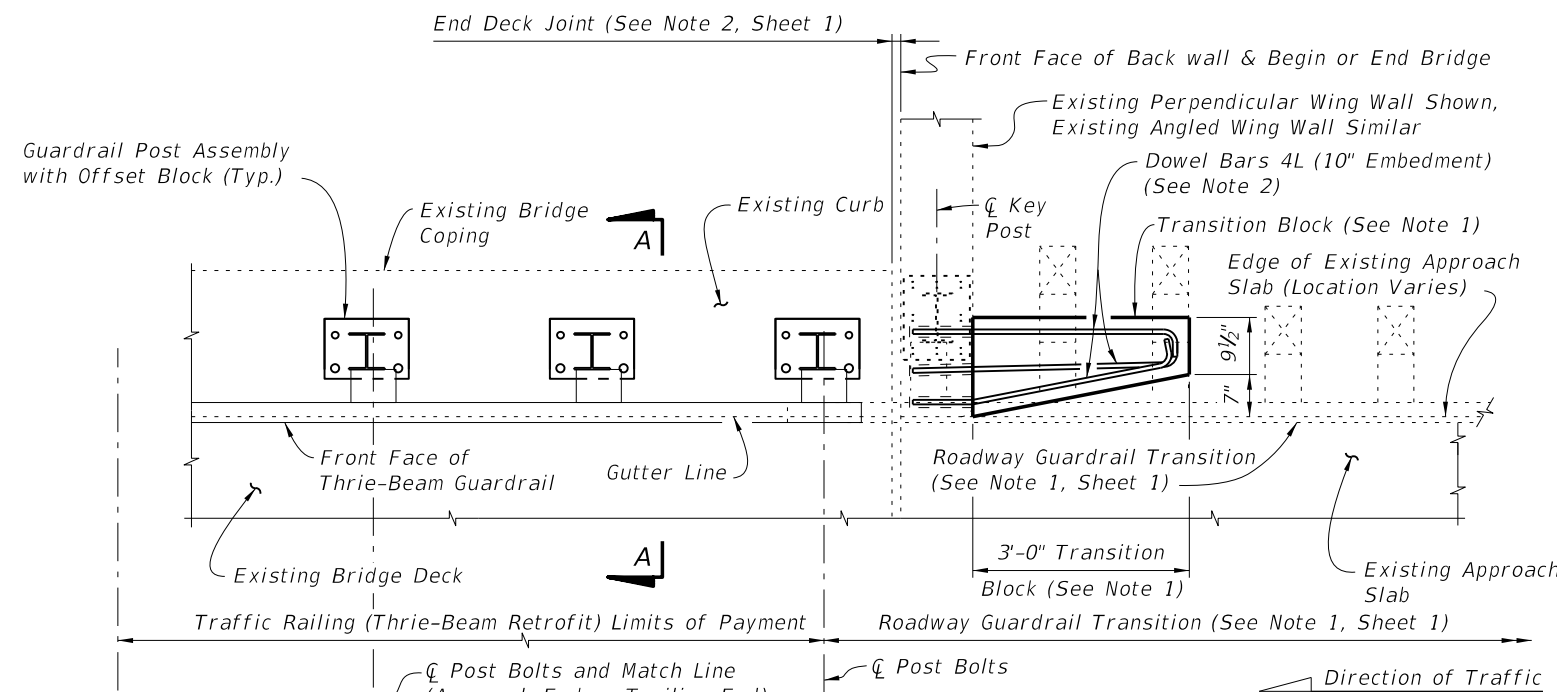
**DOWEL BAR 4L**

NOTE: All bar dimensions are out to out.

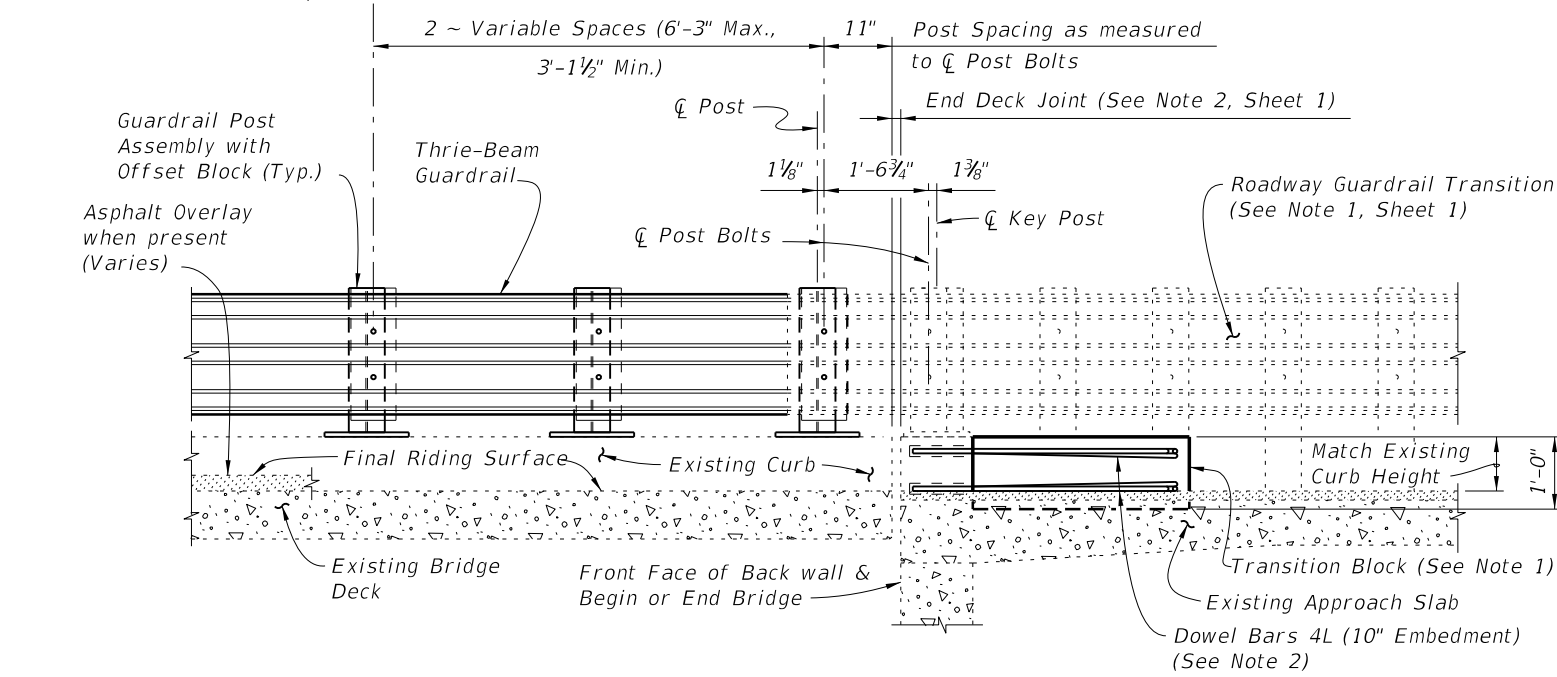


**CROSS REFERENCES:**  
 For location of Section A-A see Sheet 1 and 3.  
 For location of Section B-B see Sheet 3  
 For application of Dim. A see Post Dimension Table on Index 470, Sheet 3.

C:\projects\standards\structures\current\ready\4release\2014BOOK\00474-3of4.dgn  
5:48:14 PM  
6/24/2013

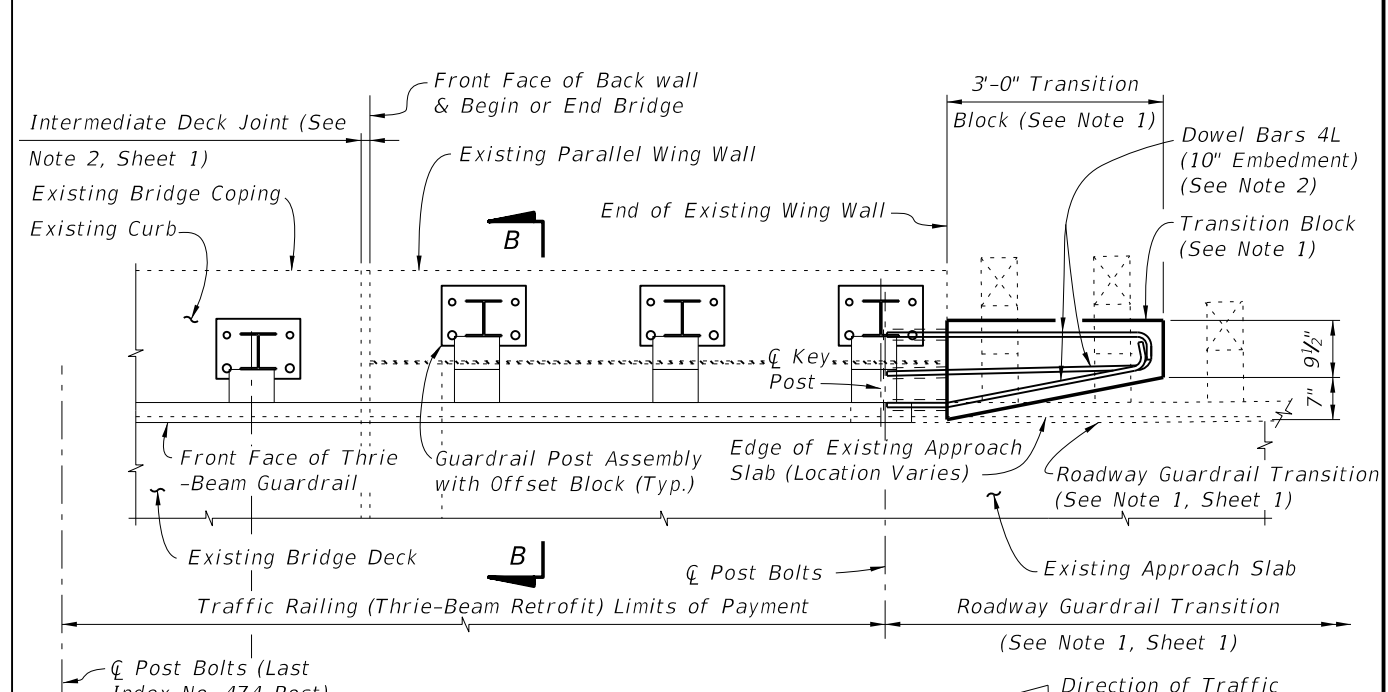


**PARTIAL PLAN OF RAILING**

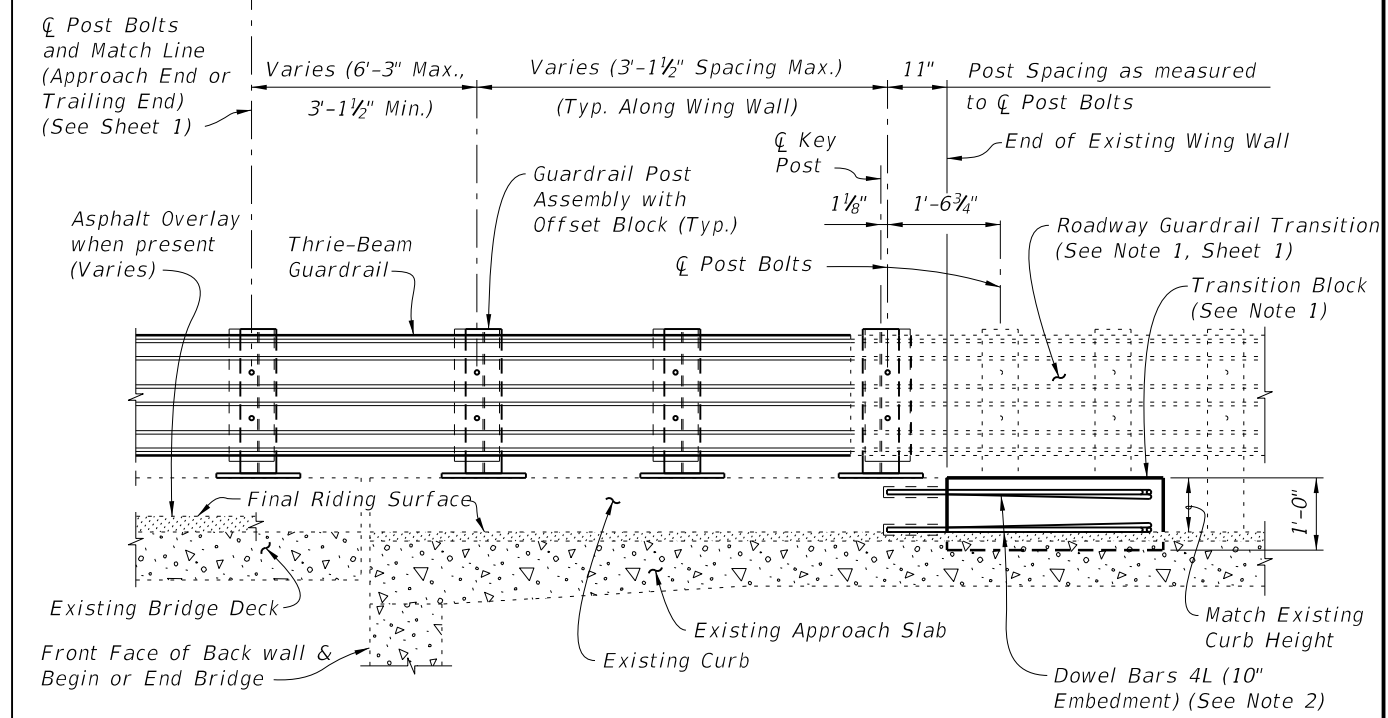


**PARTIAL ELEVATION OF INSIDE FACE OF RAILING**

**SCHEME 1**  
**RAILING END TREATMENT FOR PERPENDICULAR OR ANGLED WING WALLS**



**PARTIAL PLAN OF RAILING**



**PARTIAL ELEVATION OF INSIDE FACE OF RAILING**


**SCHEME 2**  
**RAILING END TREATMENT FOR PARALLEL WING WALLS**

**SCHEME 1 NOTES:**

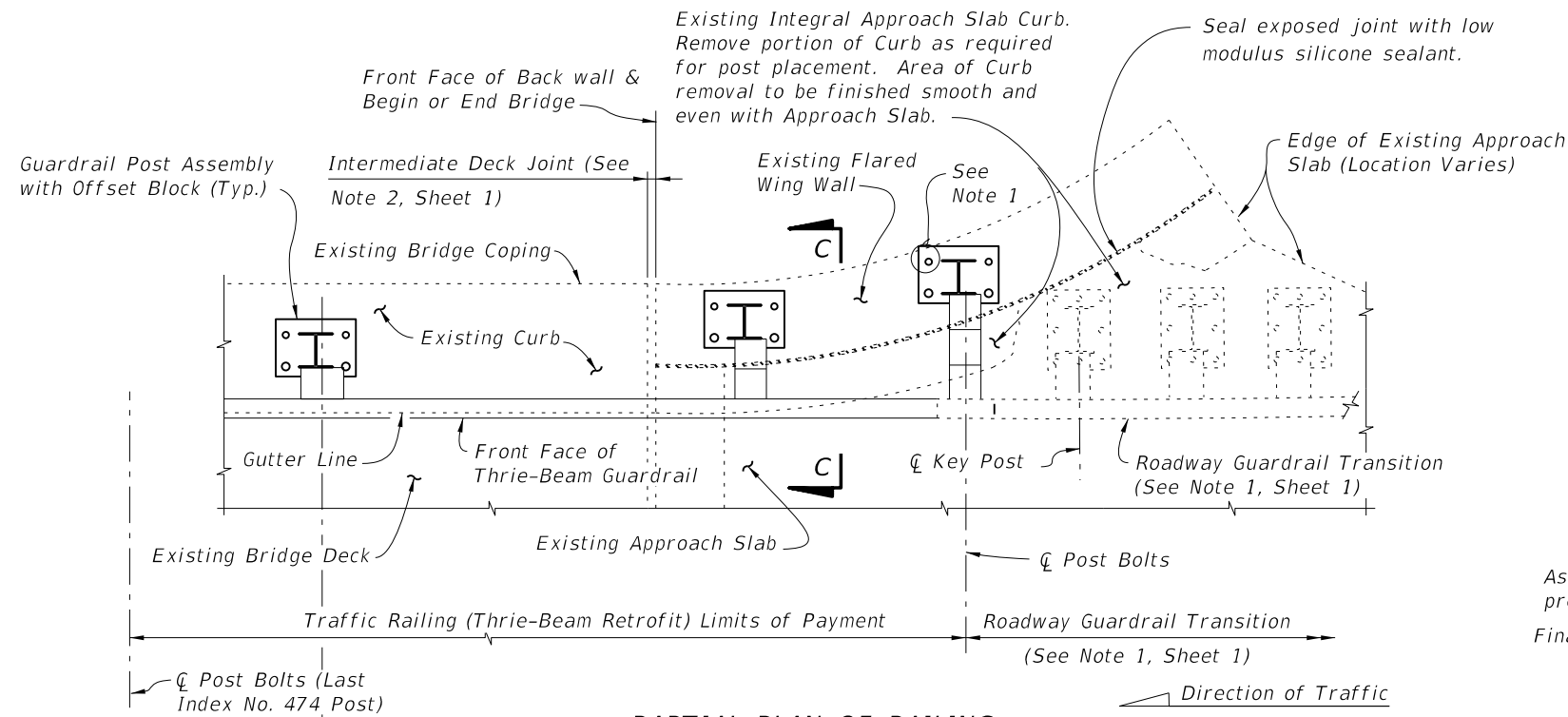
1. Provide Transition Block (as shown) or Curb if existing Approach Slab does not have a curb, see Roadway Plans. Shape and height of Transition Block or Curb shall match existing bridge curb. Transition Block may be omitted on trailing ends with no opposing traffic.
2. Field bend Dowel Bars 4L within Transition Block as required to maintain 2" top and side clearance and 3" bottom clearance.

**SCHEME 2 NOTES:**

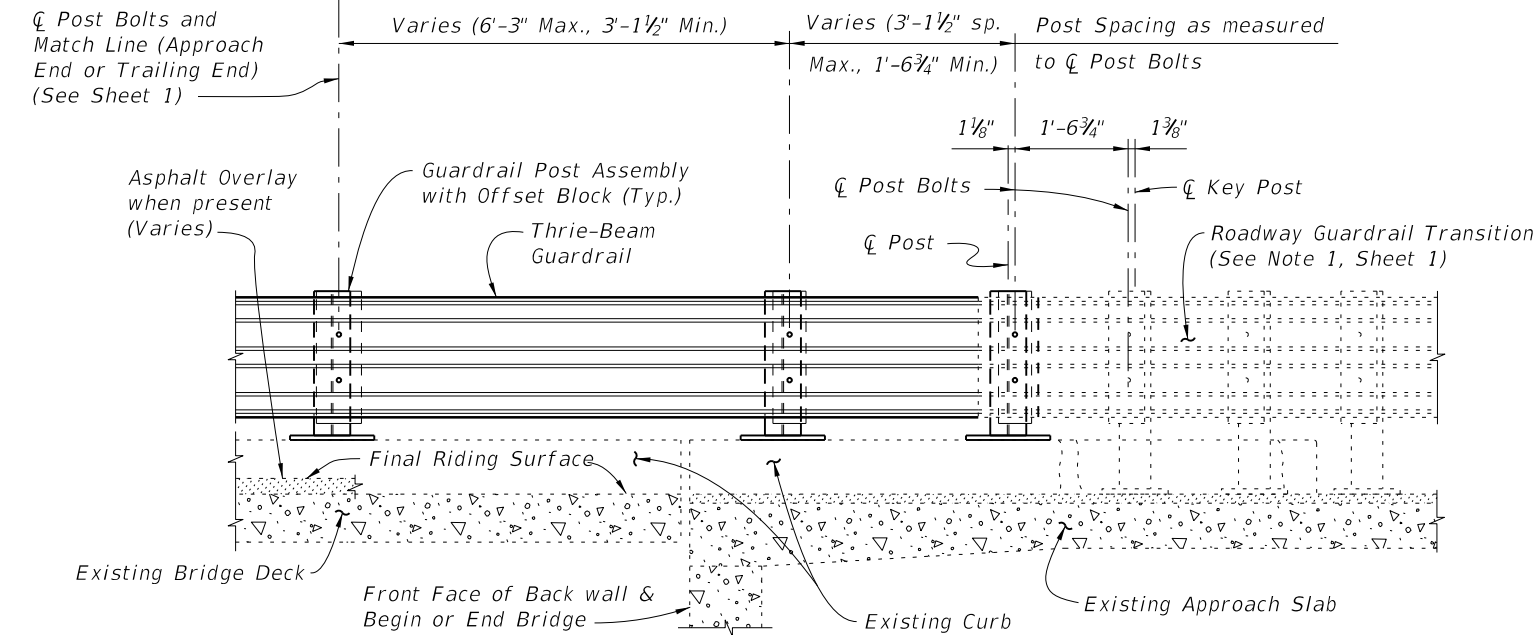
1. Provide Transition Block (as shown) or Curb if existing Approach Slab Curb does not extend to end of Approach Slab. Shape and height of Transition Block or Curb shall match existing bridge curb. Transition Block may be omitted on trailing ends with no opposing traffic.
2. Field bend Dowel Bars 4L within Transition Block as required to maintain 2" top and side clearance and 3" bottom clearance.

LAST REVISION 01/01/08	REVISION	DESCRIPTION:	 <b>FDOT 2014</b> <b>DESIGN STANDARDS</b>	<b>TRAFFIC RAILING - (THRIE-BEAM RETROFIT)</b> <b>INTERMEDIATE CURB</b>	INDEX NO. 474	SHEET NO. 3 of 4
---------------------------	----------	--------------	--	--	------------------	---------------------

C:\projects\standards\structures\current\ready\4release\2014\BOOK\00474-4of4.dgn  
 sm970re  
 5:48:16 PM  
 6/24/2013

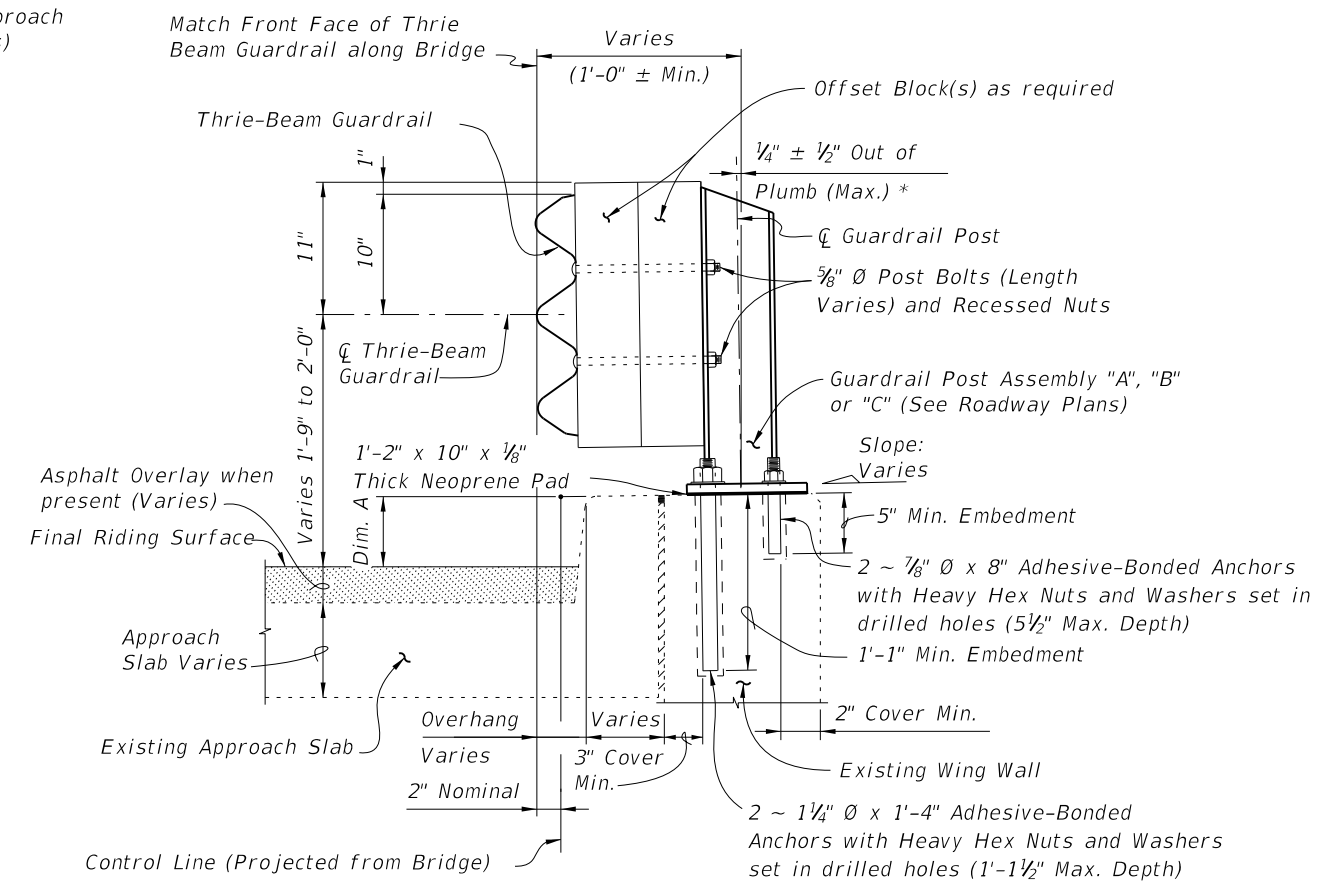


**PARTIAL PLAN OF RAILING**



**PARTIAL ELEVATION OF INSIDE FACE OF RAILING**

**SCHEME 3**  
**RAILING END TREATMENT FOR FLARED WING WALLS**




**SECTION C-C (SCHEME 3)**  
**TYPICAL SECTION THRU RAILING ALONG APPROACH SLAB**

**SCHEME 3 NOTE:**

1. A single  $\frac{7}{8}$ "  $\emptyset$  x 8" Adhesive-Bonded Anchor may be omitted as shown when 2" clear cover cannot be provided (see Section C-C).

**CROSS REFERENCE:**  
 For application of Dim. A see Post Dimension Table on Index 470, Sheet 3.

LAST REVISION <b>07/01/09</b>	REVISION	DESCRIPTION:	 <b>FDOT 2014</b> <b>DESIGN STANDARDS</b>	<b>TRAFFIC RAILING - (THRIE-BEAM RETROFIT)</b> <b>INTERMEDIATE CURB</b>	INDEX NO. <b>474</b>	SHEET NO. <b>4 of 4</b>
----------------------------------	----------	--------------	--	--	-------------------------	----------------------------