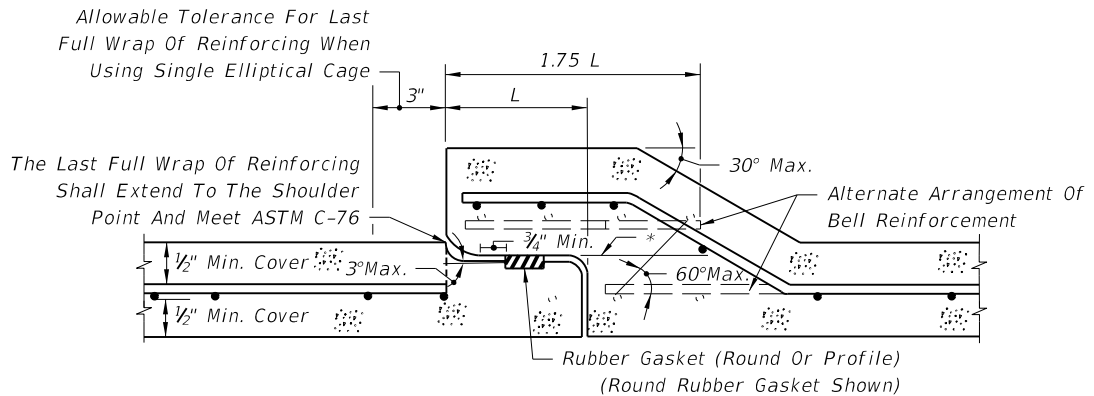
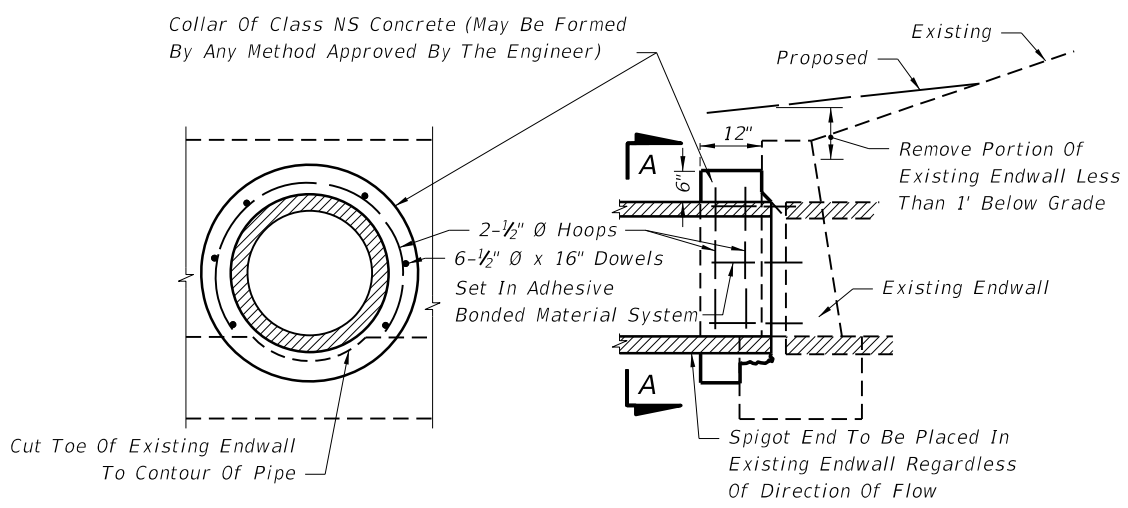


SCHEDULE OF BELL REINFORCEMENT
Classes II,III,IV,V; Wall A,B,C

Nominal Pipe Diameter	Design Bell Reinforcement in ² per foot	Maximum Reinforcement Under Tolerance in ² per foot
15"	0.07	0.010
18"	0.07	0.010
24"	0.09	0.010
30"	0.12	0.010
36"	0.14	0.010
42"	0.16	0.010
48"	0.19	0.011
54"	0.21	0.012
60"	0.23	0.0135
66"	0.26	0.015
72"	0.28	0.0165
78"	0.30	0.018
84"	0.33	0.0195
90"	0.35	0.021
96"	0.37	0.0225
102"	0.40	0.024
108"	0.42	0.0255

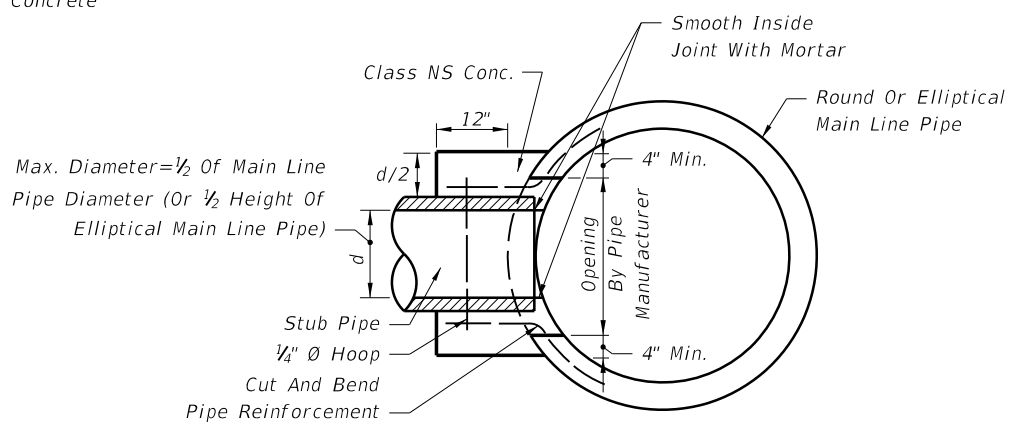


**ROUND RUBBER GASKET SHOWN
DETAIL OF BELL & SPIGOT CONCRETE PIPE JOINT
USING ROUND OR PROFILE RUBBER GASKET**



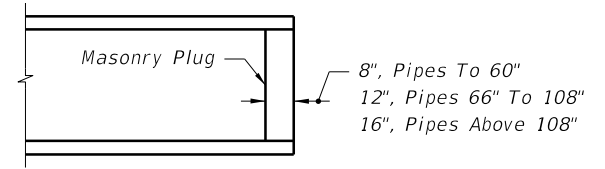
SECTION AA LONGITUDINAL SECTION
Note: Cost for removal and disposal of portions of top and toe of existing endwall and cost of concrete, reinforcing steel and construction of collar to be included in the contract unit price for pipe culvert.

CONCRETE COLLAR FOR EXTENSION OF EXISTING PIPE CULVERTS



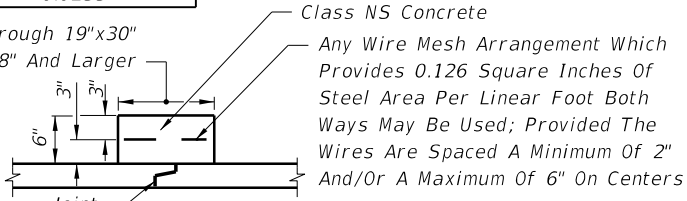
Cost of concrete and steel to be included in contract unit price for pipe culvert.

CONCRETE COLLAR FOR JOINING MAINLINE PIPE AND STUB PIPE



Note: Unless otherwise called for in the plans, the cost of plugging pipes to be included in contract unit price for new pipe.

PIPE PLUG



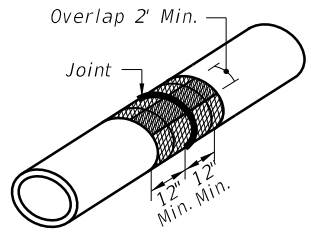
CONCRETE JACKET



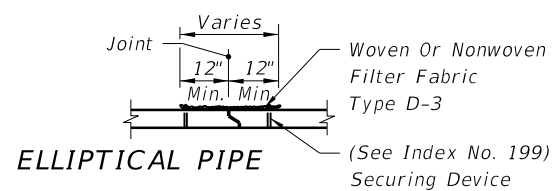
PREFORMED PLASTIC JOINT (BEFORE PULL-UP)
PROFILE RUBBER GASKET (BEFORE PULL-UP)

Cost of concrete jacket or filter fabric jacket to be included in cost of elliptical concrete pipe culverts.

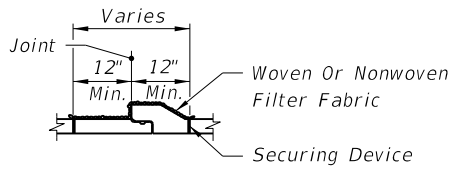
ELLIPTICAL CONCRETE PIPE JOINTS



ELLIPTICAL PIPE SHOWN ISOMETRIC VIEW



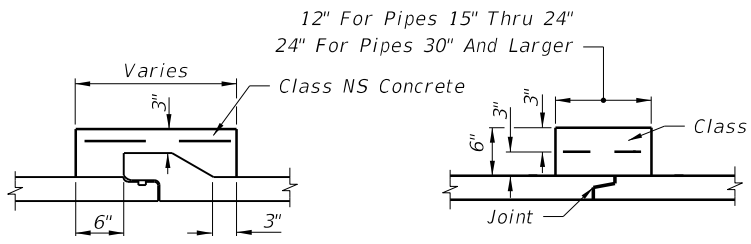
ELLIPTICAL PIPE



ROUND PIPE PIPE SECTIONS

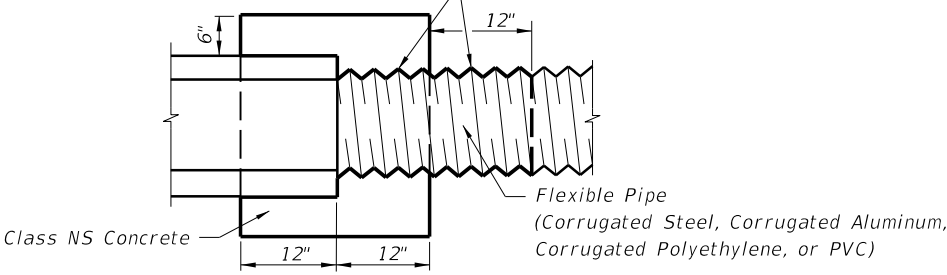
Cost of filter fabric jacket to be included in cost of pipe culverts.

FOR ALL PIPE TYPES - CONCRETE PIPE SHOWN FILTER FABRIC JACKET



BELL AND SPIGOT TONGUE & GROOVE DISSIMILAR JOINTS

Bituminous Coating Required For CMP (Any Suitable Bituminous Material May Be Field Applied) Bituminous Coating To Extend 12\"/>



Note: Cost of concrete and bituminous coating to be included in contract unit price for either new pipe or Mitered End Section.

Alternate connection must be approved by the State Drainage Engineer.

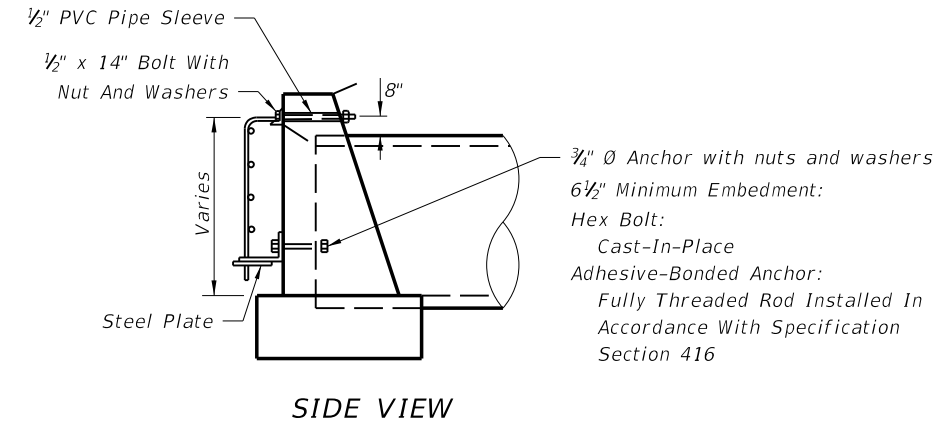
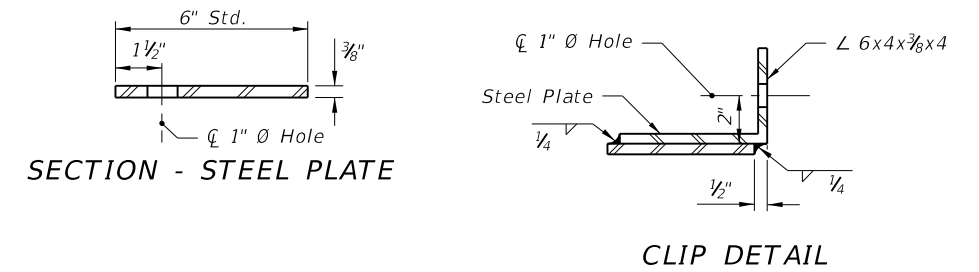
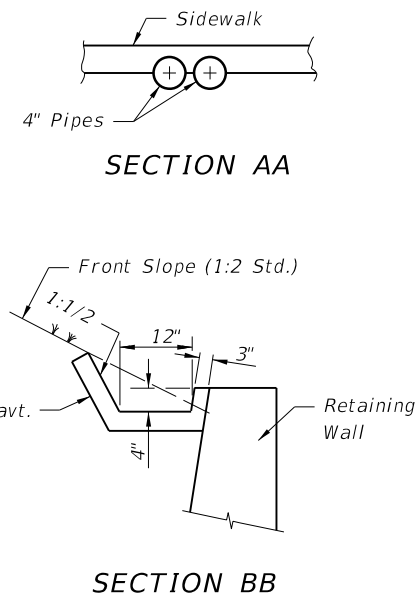
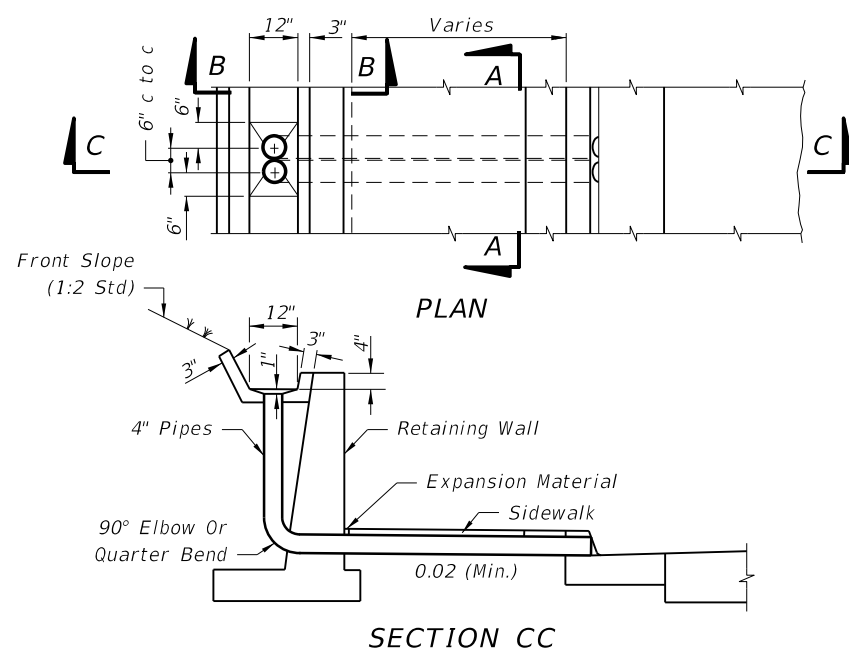
- A concrete jacket shall not be used to join:
a) metal pipe of dissimilar materials
b) flexible pipe when the minimum cover required in accordance with Index No. 205 cannot be obtained

DISSIMILAR TYPES

CONCRETE JACKET FOR CONNECTING DISSIMILAR TYPES OF PIPE AND CONCRETE PIPES WITH DISSIMILAR JOINTS

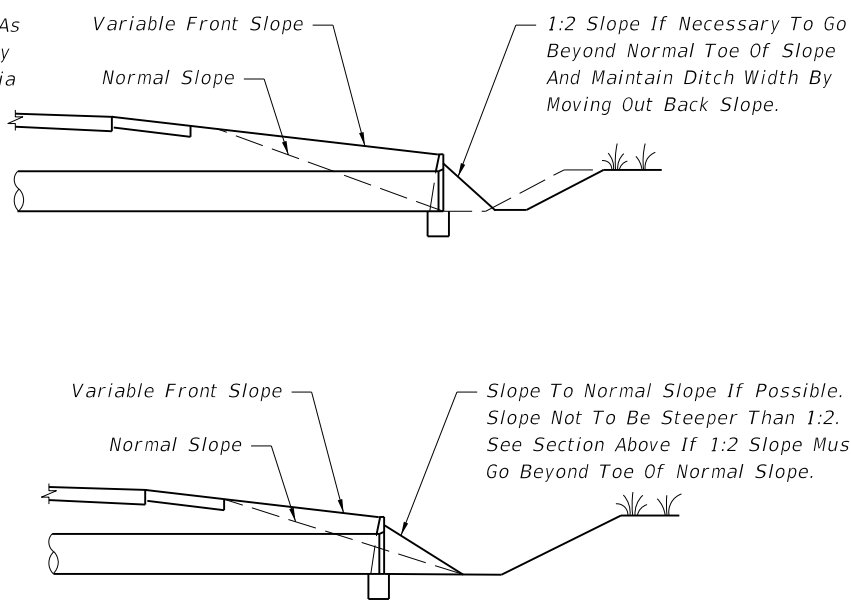
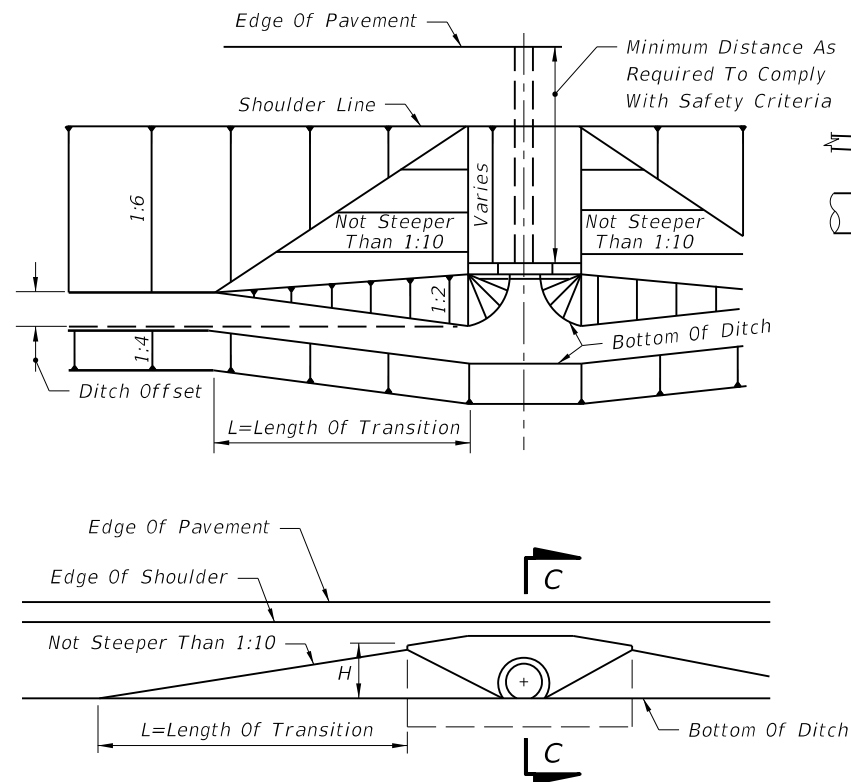
C:\projects\standards\roadway\02200-s\00280-01.dgn smg70re 4:57:11 PM 6/24/2013

C:\projects\standards\roadway\02200-s\02280-02.dgn
 sm970re
 4:57:13 PM
 6/24/2013



CONCRETE GUTTER AND DRAINS AT RETAINING WALLS

Note: PVC pipe, Schedule 40, to be paid for under the contract unit price for Polyvinyl Chloride Pipe Culvert (4"), LF.

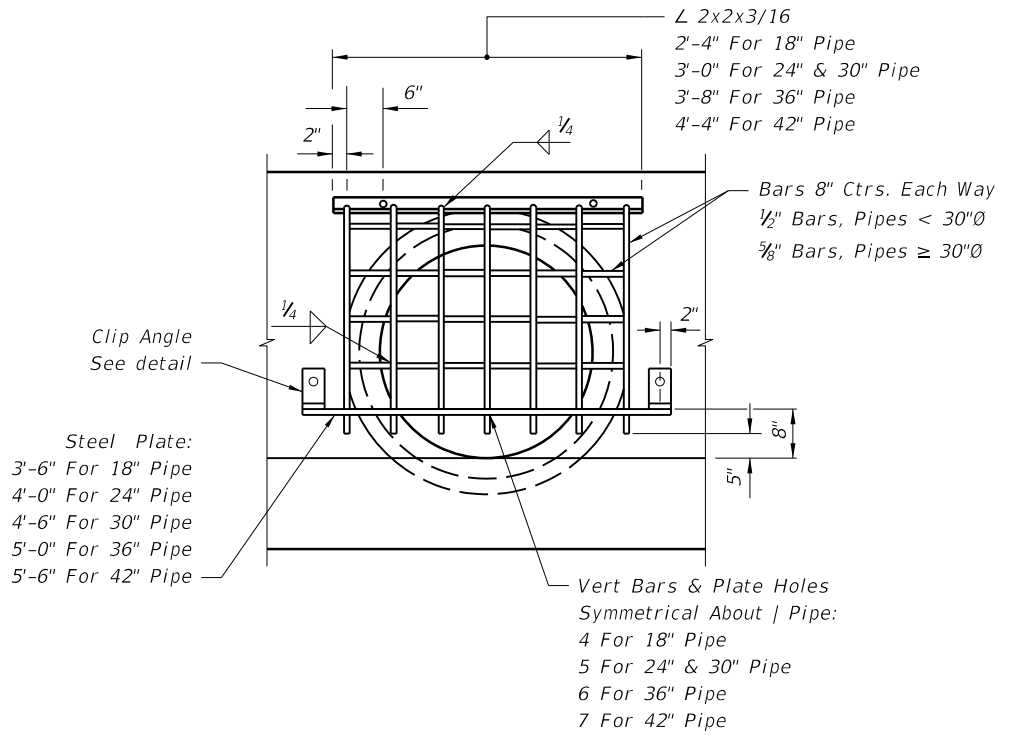


NOTE: Filling or excavation of variable slopes to be done during normal grading operations.

SECTION CC

Use Larger Value Of Either:
 1. L=10xH (No Maximum)
 2. L=10xDitch Offset (Maximum L=100')

METHOD FOR SETTING LIMITS OF VARIABLE FRONT SLOPES AT DRAINAGE STRUCTURES



Pipe Dia.	18"	24"	30"	36"	42"
Grate (Lbs.)	48	58	74	90	111

FRONT VIEW

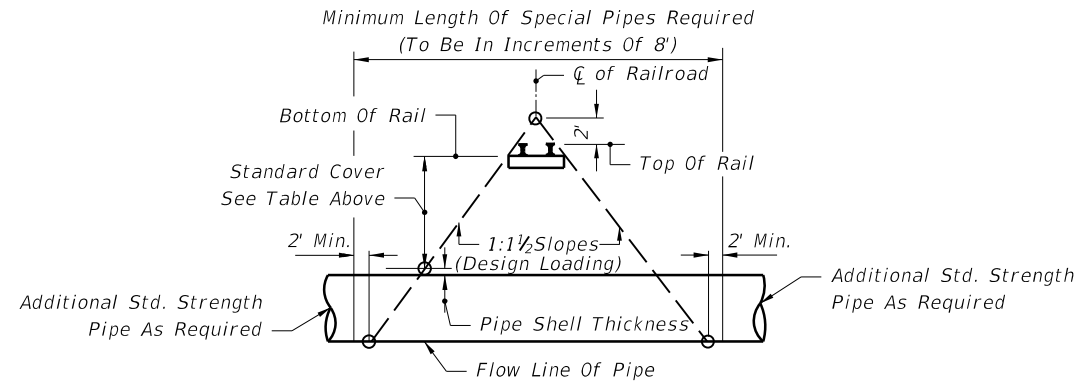
Note: Guards to be constructed only at locations specifically called for in plans. Guard, plate & clips, bolts, nuts and sleeves to be included in the contract unit price for Reinforcing Steel (Miscellaneous).

GUARD AT PIPE ENDS

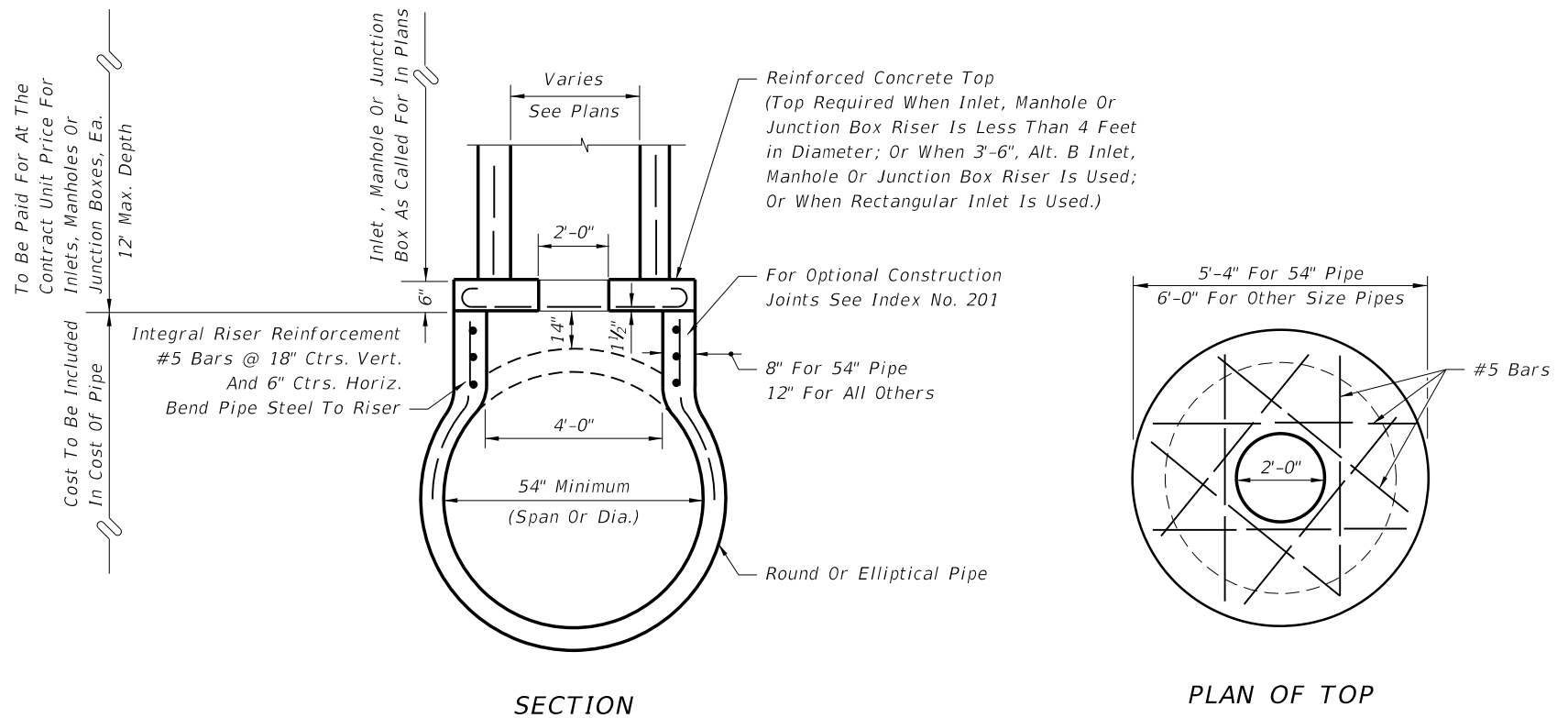
RAILROAD COMPANY	CLEARANCE BELOW BOTTOM OF RAIL (FEET) ⁽²⁾	STRENGTH
		ASTM (C76) CLASS
Alabama & Gulf Coast Railway (Rail America)	5.5	IV
AN Railway & Bay Line Railroad (Genesee & Wyoming)	5.5 / 4.5 ⁽¹⁾	V
CSX Transportation	5.5	V
First Coast Railroad (Genesee & Wyoming)	5.5 / 4.5 ⁽¹⁾	V
Florida Midland, Central, and Northern Railroads (Pinsly Railroad)	5.5	V
Florida East Coast (FEC) Railway Company	5.5	IV
Florida West Coast Railroad Company	5.5	V
Georgia & Florida Railway, Inc.	5.5	V
Norfolk Southern (NS) Railway Corporation	5.5 / 4.5 ⁽¹⁾	V
Port of Palm Beach District Railroad	5.5	IV
Seminole Gulf Railway (LP)	6.0	V
South Central Florida Express	6.0	V
Talleyrand Terminal Railroad (Genesee & Wyoming)	5.5 / 4.5 ⁽¹⁾	V
South Florida Regional Transportation Authority (Tri-County Commuter Rail)	5.5	V

(1) - Distance standard for yard and industrial tracks.

(2) - Clearance is for casing pipe. All subgrade carrier pipelines and wirelines will be installed within a casing pipe which will extend from Right-of-Way line to Right-of-Way line.




METHOD FOR DETERMINING THE LENGTH OF SPECIAL PIPE REQUIRED UNDER RAILROADS



INLETS, MANHOLES OR JUNCTION BOXES ON INTEGRAL PRECAST CONCRETE RISER FOR CONCRETE PIPE

C:\projects\standards\roadway\00200-s\00280-03.dgn 6/24/2013 4:57:15 PM sm970re

LAST REVISION 07/01/07	DESCRIPTION:	 FDOT 2014 DESIGN STANDARDS	MISCELLANEOUS DRAINAGE DETAILS	INDEX NO. 280	SHEET NO. 3 of 3
---------------------------	--------------	---	---------------------------------------	-------------------------	----------------------------