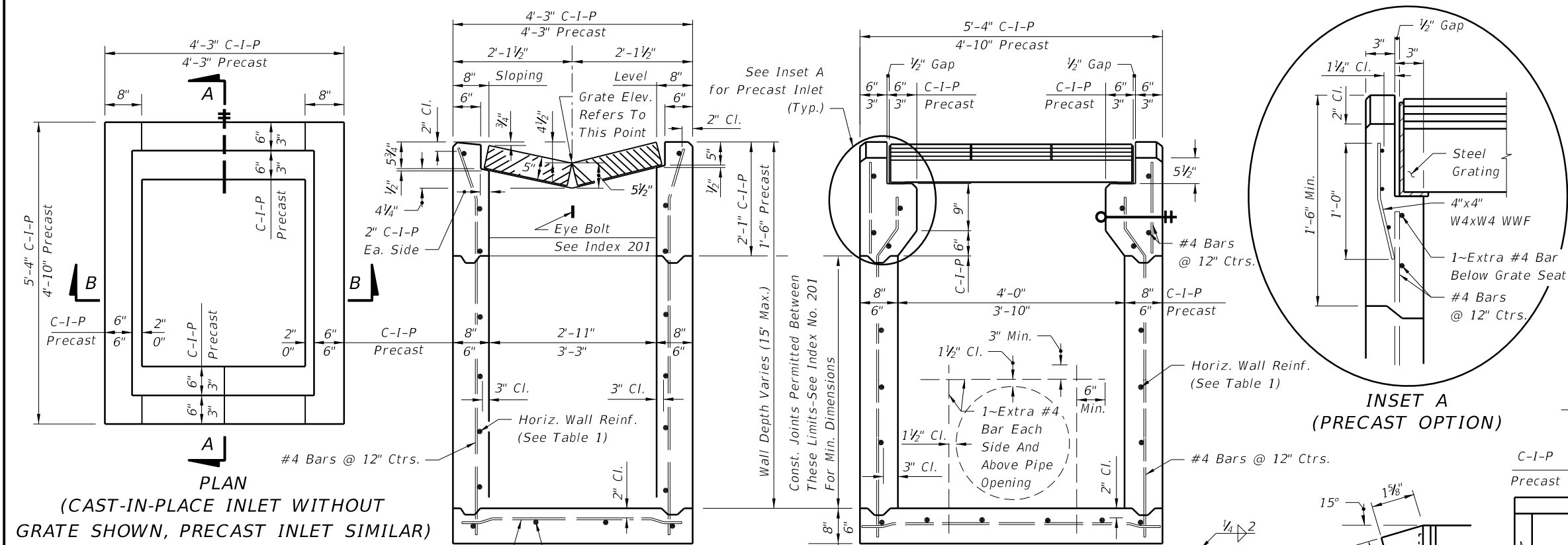
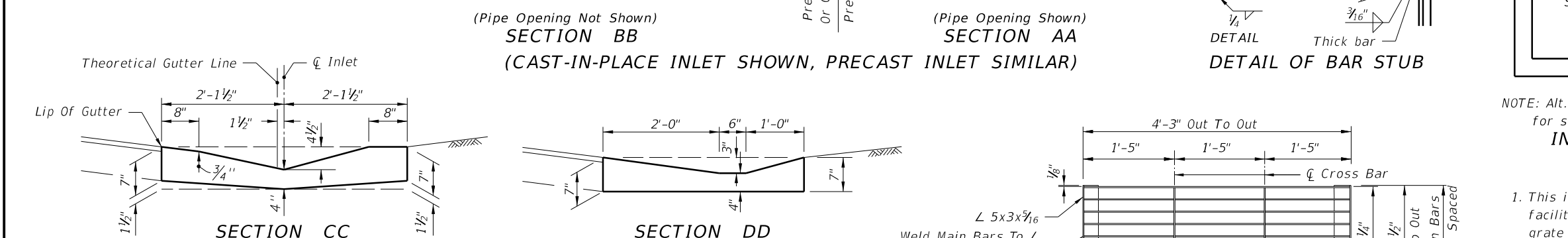


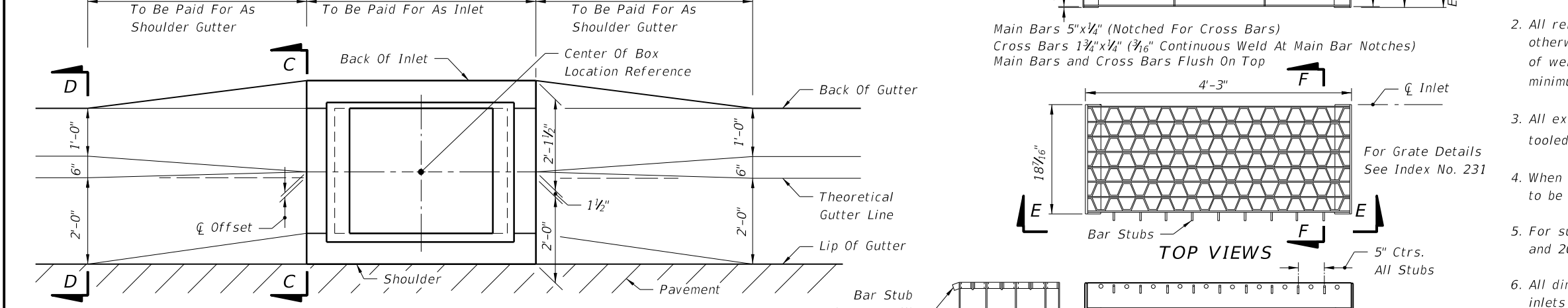
C:\projects\standards\roadway\00200-s\00220-01.dgn
 sm970re
 4:41:20 PM
 6/24/2013



PLAN (CAST-IN-PLACE INLET WITHOUT GRATE SHOWN, PRECAST INLET SIMILAR)
 #4 Bars @ 12" Ctrs. (8" Slab) Or 8" Ctrs. (Precast 6" Slab)
 #4 Bars @ 12" Ctrs. (8" Slab) Or 11" Ctrs. (Precast 6" Slab)



SECTION BB (CAST-IN-PLACE INLET SHOWN, PRECAST INLET SIMILAR)
SECTION AA (PIPE OPENING SHOWN)



SECTION CC
SECTION DD

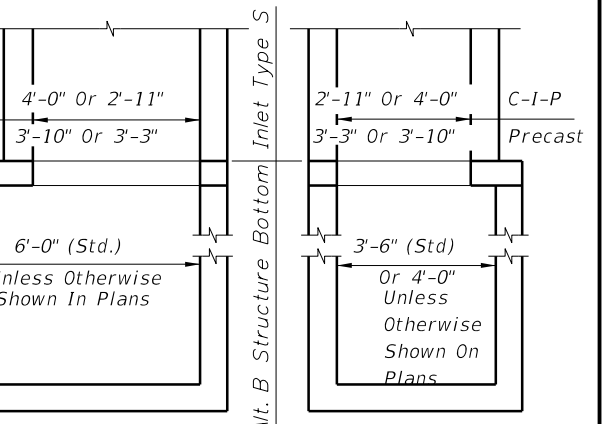


TOP VIEWS
SECTION FF

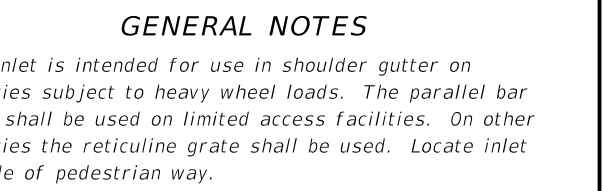
RECOMMENDED MAXIMUM PIPE SIZES	
INLET INSIDE WIDTH	PIPE SIZE
2'-11" or 3'-3"	24"
4'-0" or 3'-10"	30"

Note: Recommended sizes are for concrete pipe. Sizes for other types of pipe must be verified for fit in accordance with Index No. 201. For larger pipe see bottom detail below and Index No. 200.

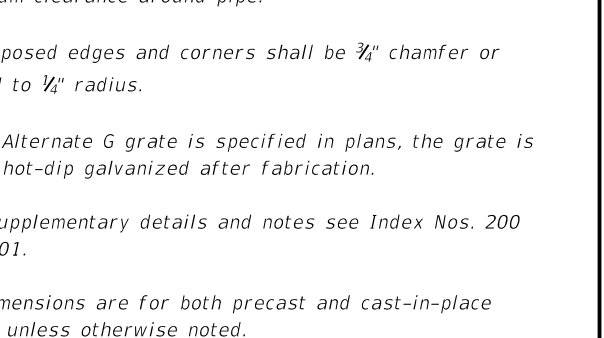
HORIZONTAL WALL REINFORCING SCHEDULE (TABLE 1)				
WALL DEPTH	SCHEDULE	AREA (in ² /ft)	MAX. SPACING	
			BARS	WWF
0'-5'	A12	0.20	12"	8"
5'-9'	A6	0.20	6"	5"
9'-12'	A4	0.20	4"	3"
9'-15'	B5.5	0.24	5 1/2"	5"



INSET A (PRECAST OPTION)

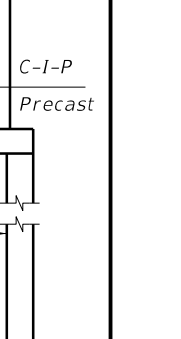


DETAIL OF BAR STUB



INLET WITH STRUCTURE BOTTOM

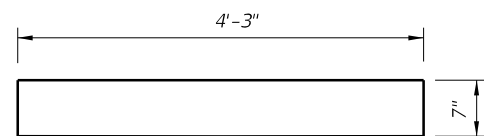
GENERAL NOTES
 1. This inlet is intended for use in shoulder gutter on facilities subject to heavy wheel loads. The parallel bar grate shall be used on limited access facilities. On other facilities the reticuline grate shall be used. Locate inlet outside of pedestrian way.
 2. All reinforcing is Grade 60 bars with 2" min. cover unless otherwise noted. See Index No. 201 for equivalent area of welded wire fabric. Bars to be cut or bent for 1 1/2" minimum clearance around pipe.
 3. All exposed edges and corners shall be 3/4" chamfer or tooled to 1/4" radius.
 4. When Alternate G grate is specified in plans, the grate is to be hot-dip galvanized after fabrication.
 5. For supplementary details and notes see Index Nos. 200 and 201.
 6. All dimensions are for both precast and cast-in-place inlets unless otherwise noted.
 7. Inlets to be paid for under the contract unit price for inlets (Gutter Type S), EA. Cost of concrete apron at terminal inlets to be included in the cost of the inlet.



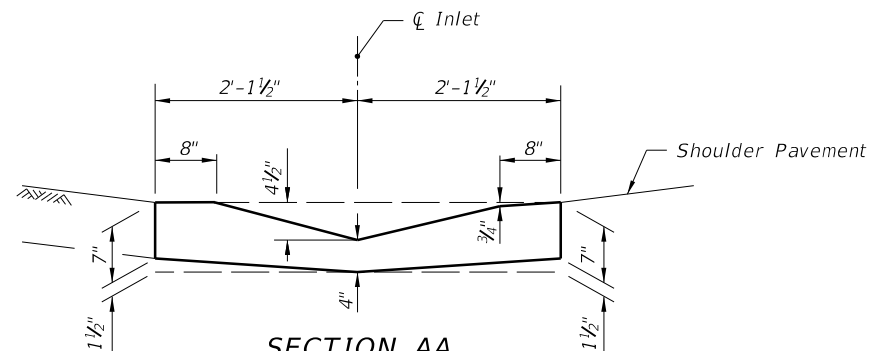
FDOT 2014
 DESIGN STANDARDS

GUTTER INLET TYPE S

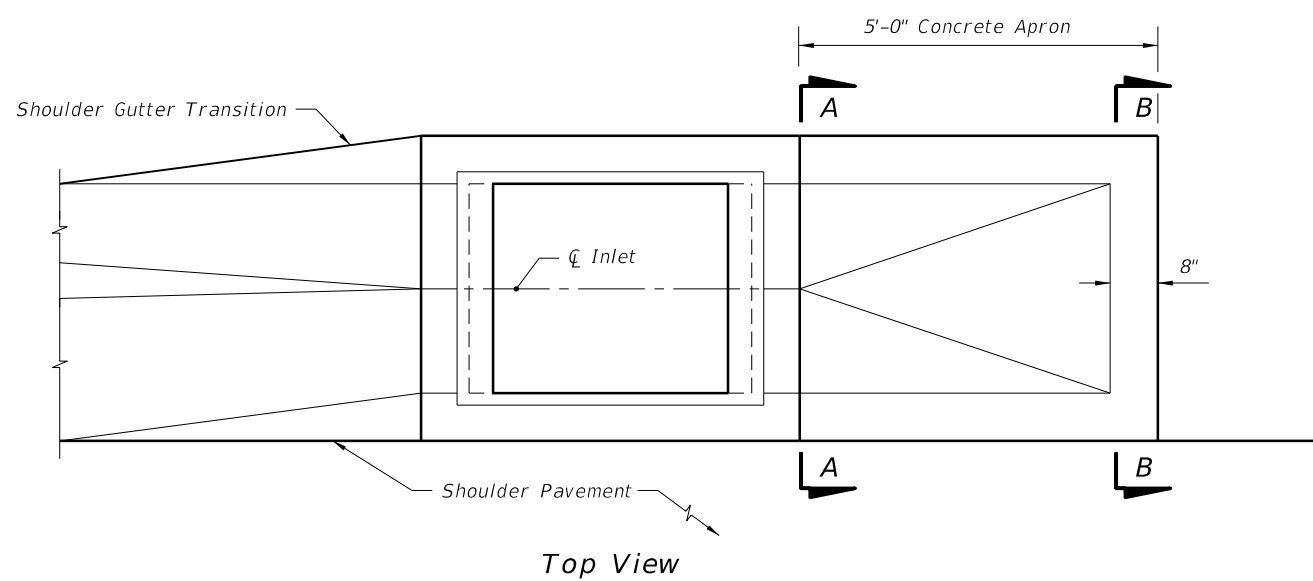
C:\projects\standards\roadway\02200-s\02220-02.dgn
 sm970re
 4:41:23 PM
 6/24/2013



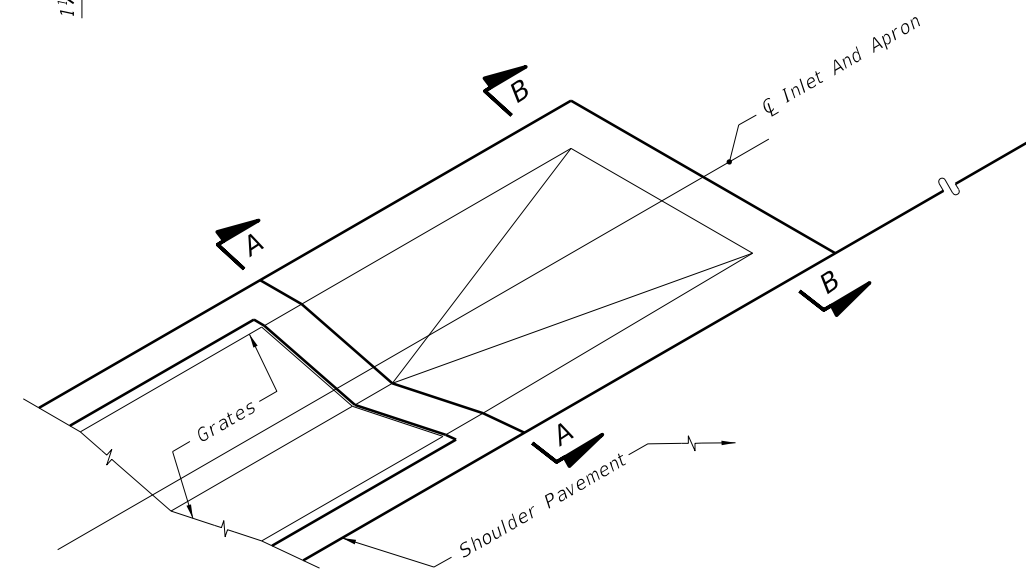
SECTION BB
(Enlarged)



SECTION AA
(Enlarged)




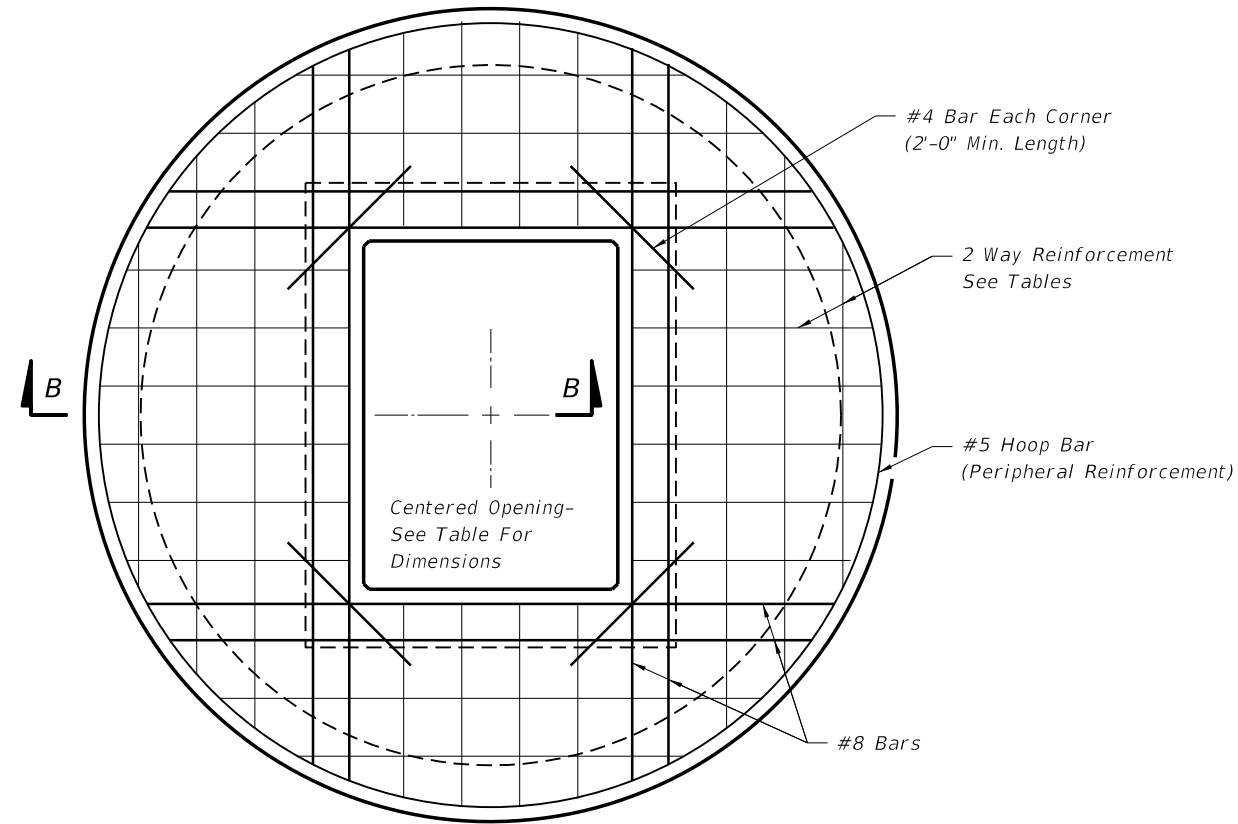
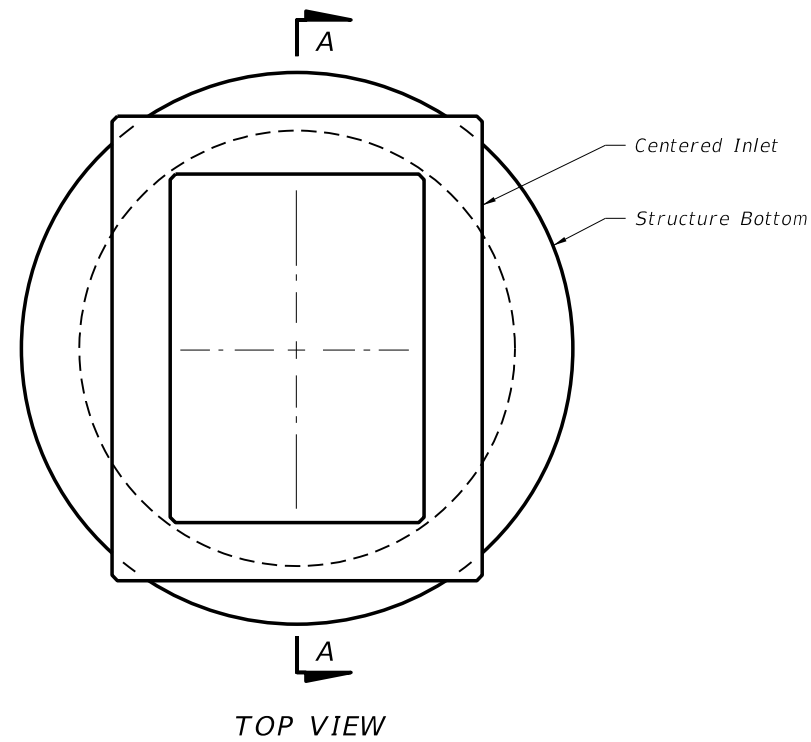
Top View



PICTORIAL VIEW

Apron To be Constructed At The Most Downstream Inlet In A Run Of Shoulder Gutter
CONCRETE APRON AT TERMINAL INLETS

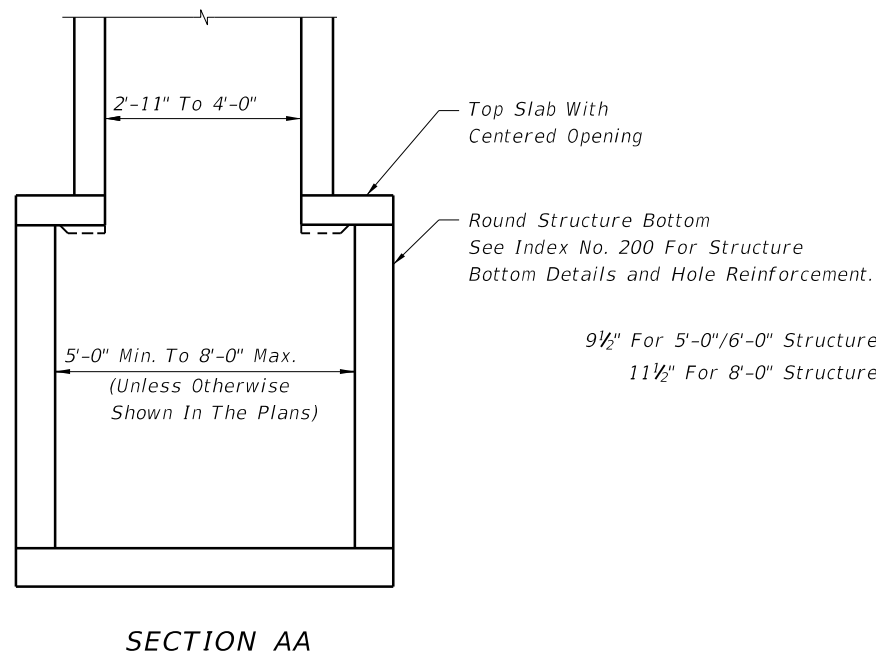
LAST REVISION 07/01/07	REVISION	DESCRIPTION:	 FDOT 2014 DESIGN STANDARDS	GUTTER INLET TYPE S	INDEX NO. 220	SHEET NO. 2 of 3
---------------------------	----------	--------------	---	----------------------------	-------------------------	----------------------------



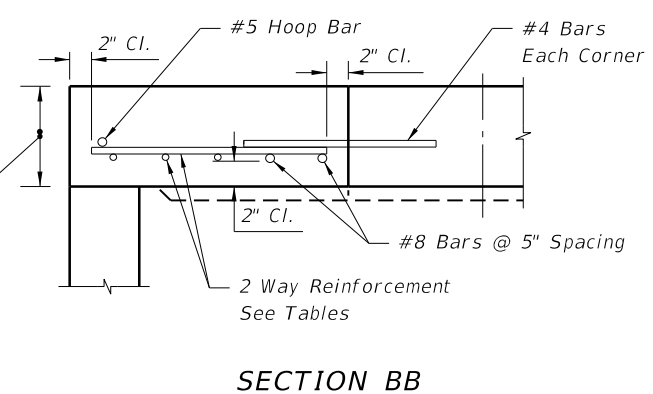
TOP SLAB REINFORCING SCHEDULE	
GRADE 60 (BAR) OR 65 KSI & 70 KSI (WIRE FABRIC)	
SCHEDULE	In ² /ft.
A	0.20
B	0.24
C	0.37
D	0.53
E	0.73
F	1.06
G	1.45

TOP SLAB OPENINGS		
DIAMETER	OPENING SIZE	
	MIN.	MAX.
5'-0" To 8'-0"	2'-11" x 4'-0"	3'-3" x 3'-10"

TOP SLAB WITH CENTERED OPENING		
SLAB DEPTH	SLAB THICKNESS	REINFORCING (2 WAYS) SCHEDULE
SIZE: 5'-0"		
≥0.5' < 30'	9½"	C
30' - 40'	9½"	D
SIZE: 6'-0"		
≥0.5' < 8'	9½"	B
8' < 18'	9½"	C
18' < 30'	9½"	D
30' < 37'	9½"	E
37' - 40'	9½"	G
SIZE: 8'-0"		
≥0.5' < 9'	11½"	C
9' < 15'	11½"	D
15' < 23'	11½"	E
23' < 33'	11½"	E
33' - 40'	11½"	G



9½" For 5'-0"/6'-0" Structure Bottoms
11½" For 8'-0" Structure Bottoms

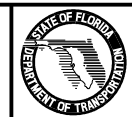


ALT. A STRUCTURE BOTTOM FOR INLET TYPE S

6/24/2013 4:41:24 PM sm970re C:\projects\standards\roadway\00200-s\00220-03.dgn

LAST REVISION
07/01/05

REVISION DESCRIPTION:



FDOT 2014
DESIGN STANDARDS

GUTTER INLET TYPE S

INDEX NO.
220

SHEET NO.
3 of 3