

GENERAL NOTES:

This Standard is only applicable to the current FDOT inventory of temporary bridge components which are manufactured in accordance with Acrow Series 300, Double Wide design. See the associated Instructions for Design Standards (IDS) for more information.

Work this Standard with Index Nos. 21610, 21620 and 21630.

STRUCTURAL STEEL:

*Steel Plates and Rolled Sections shall be ASTM A 709 Grade 36.
Pipe piles shall be ASTM A 252 Grade 2, Fy = 35 ksi.*

BOLTS, LAG SCREWS AND THREADED BOLT STOCK:

Furnish high strength bolts in accordance with ASTM A325. Furnish Threaded Stock in accordance with ASTM A36. Furnish Lag Screws in accordance with ASTM A307. Furnish steel washers and nuts compatible with Bolts, Threaded Stock and Lag Screws.

TIMBER AND LAGGING:

Timber and Lagging shall be No. 1 Southern Yellow Pine.

BACKWALL BENT PILES:

*Timber Piles:
10' Minimum Embedment into compacted backfill or into soil having a blow count greater than 6 (N>6).
Ultimate Capacity greater than 18 tons.
Splices are not allowed on any timber piles.*

H-Piles:

*12' Minimum Embedment into compacted backfill or into soil having a blow count greater than 6 (N>6).
Ultimate Capacity greater than 18 tons.*

*Shims admissible between backwall pile and cap.
Test piles are not required for backwall piles.*

EXPANSION BEARINGS:

*Inspect the PTFE (Teflon) layer and stainless steel plate prior to installation.
Do not use bearings that have a severely damaged or unbonded PTFE layer.
Clean PTFE of all grit and grime prior to installation.
Clean Stainless steel plate of all grit and grime prior to installation and finish to a smooth buffed surface.*

DISTRIBUTING BEAMS:

*Longitudinal stops restraining the distributing beams may be lengthened or shortened to center the distributing beam bearing on the cap beam.
The longitudinal stops are to bear on the distributing beam end frame.*

EXPANSION JOINT SETTINGS:

Install the expansion joint considering the total continuous bridge length, location of fixed bearings and ambient temperature at the time of installation, assume a 1" expansion joint opening at 70 degrees F.

STORAGE FACILITY:

*Contact
FDOT Statewide Aluminum Shop
2590 Camp Rd.
Oviedo, Fl.
407-977-6520
For shipping weights and dimensions of Temporary Bridge elements.*

SHIPPING WEIGHTS AND DIMENSIONS:

Decking Sizes:

Type	Length	Width	Weight (lbs.)
Curb	5'	6'-9"	800
Curb	10'	6'-9"	1420
Curb	15'	6'-9"	2200
Curb	20'	6'-9"	2800
NonCurb	5'	5'-3"	650
NonCurb	10'	5'-3"	1000
NonCurb	15'	5'-3"	1600
NonCurb	20'	5'-3"	2100

Shipping weights and dimensions of other bridge components can be referenced in "Acrow Panel Bridging, Series 300, Technical Handbook".

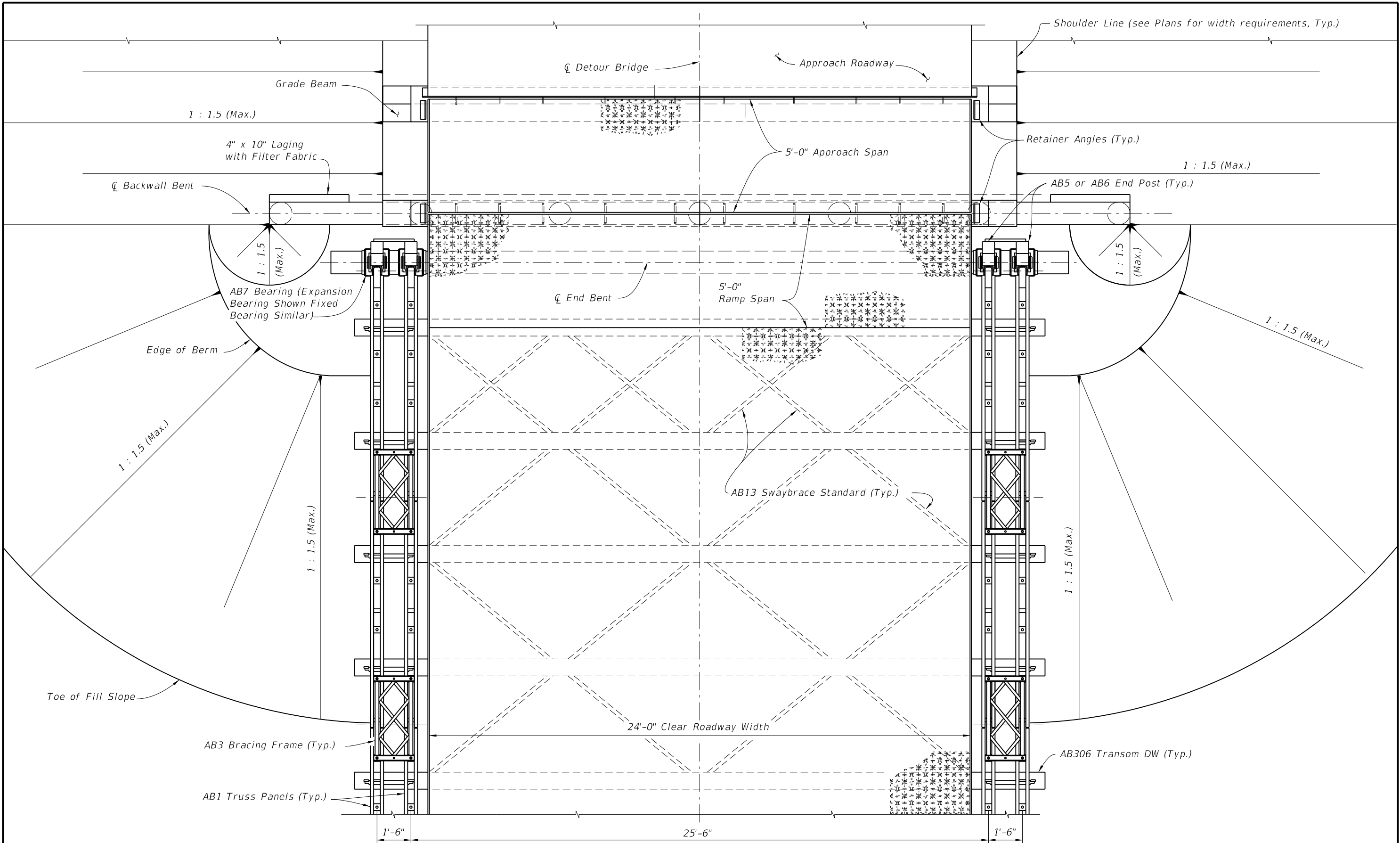
PAYMENT:

Temporary Detour Bridge is to be paid for under Contract Unit Price for Special Detour. If a temporary bridge system other than that shown herein is used, the Contractor is responsible for renting or purchasing their own system.

C:\projects\standards\structures\2013book\21600-1of7.dgn 6/29/2012 3:17:46 PM rd960rh

LAST REVISION	REVISION	DESCRIPTION:		FDOT DESIGN STANDARDS 2013	TEMPORARY DETOUR BRIDGE GENERAL NOTES AND DETAILS	INDEX NO.	SHEET NO.
01/01/11						21600	1

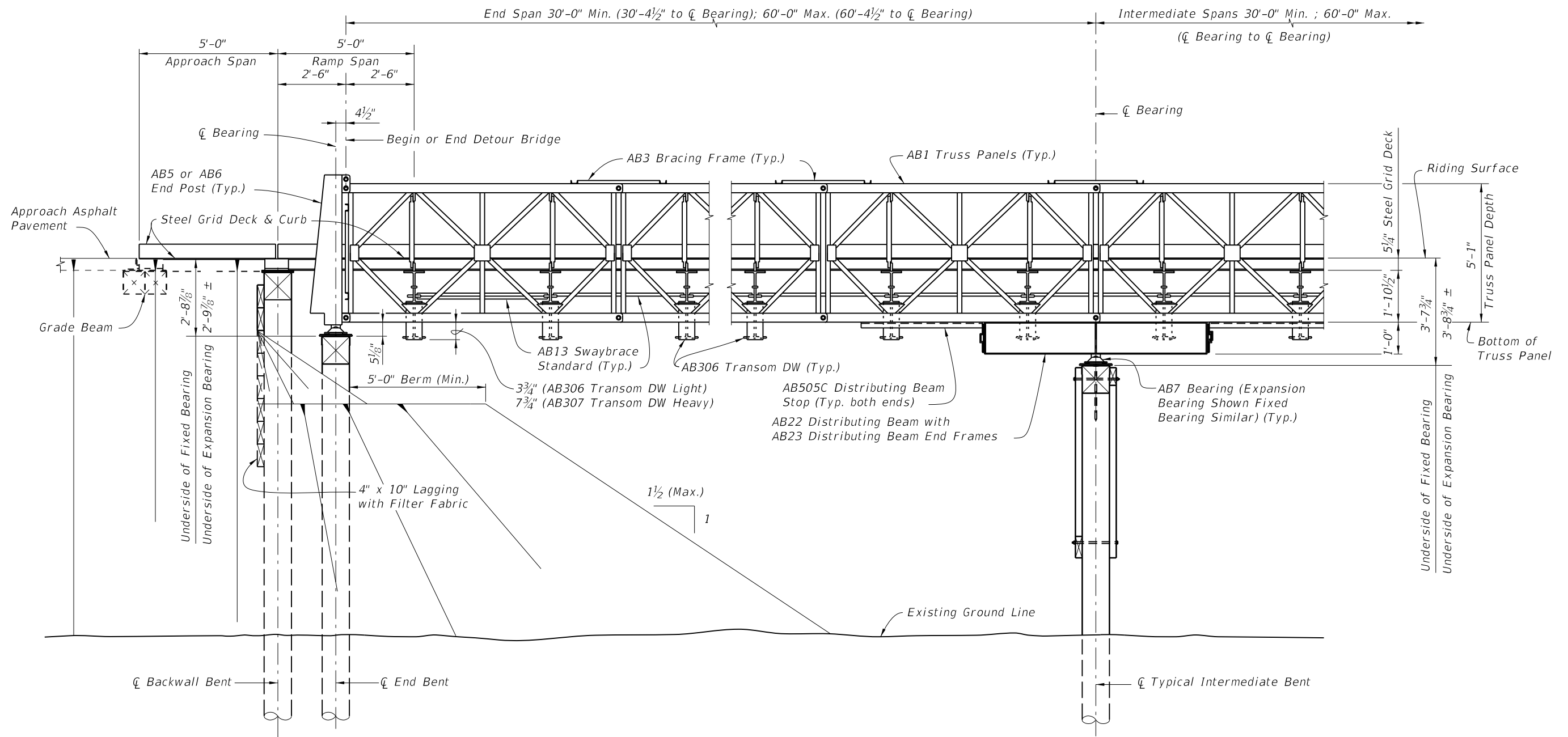
C:\projects\standards\structures\2013book\21600-2of7.dgn
 rd960/h
 3:17:49 PM
 6/29/2012



TYPICAL PLAN VIEW OF DETOUR BRIDGE
 (TIMBER PILE SHOWN, STEEL H PILES AND STEEL PIPE PILES SIMILAR)

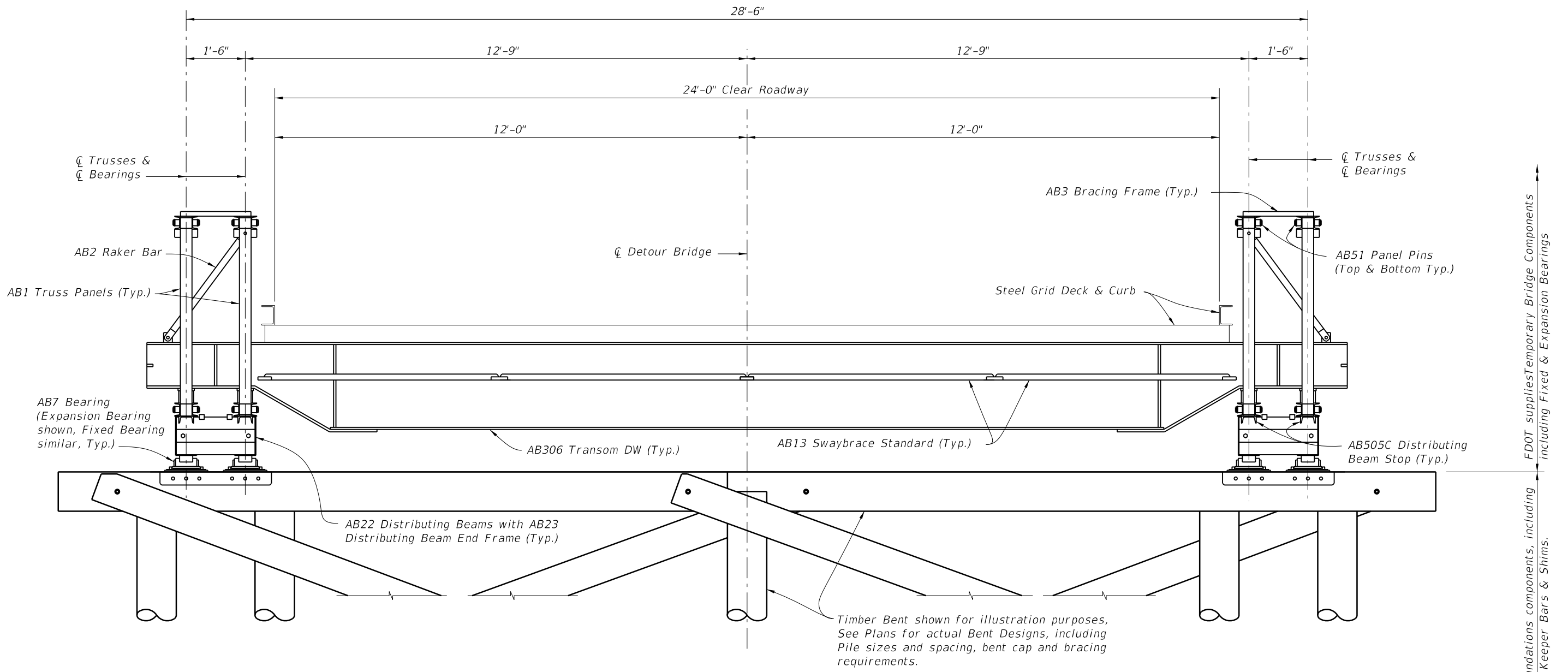
LAST REVISION	07/01/06	DESCRIPTION:	FDOT DESIGN STANDARDS 2013	TEMPORARY DETOUR BRIDGE GENERAL NOTES AND DETAILS	INDEX NO. 21600	SHEET NO. 2
---------------	----------	--------------	--------------------------------------	--	---------------------------	-----------------------

C:\projects\standards\structures\2013book\21600-3of7.dgn
 rd960rh
 3:17:51 PM
 6/29/2012



ELEVATION VIEW
 (TIMBER PILES SHOWN, STEEL H PILES AND STEEL PIPE PILES SIMILAR)

LAST REVISION	DESCRIPTION:	 FDOT DESIGN STANDARDS 2013	TEMPORARY DETOUR BRIDGE GENERAL NOTES AND DETAILS	INDEX NO.	SHEET NO.
01/01/08				21600	3



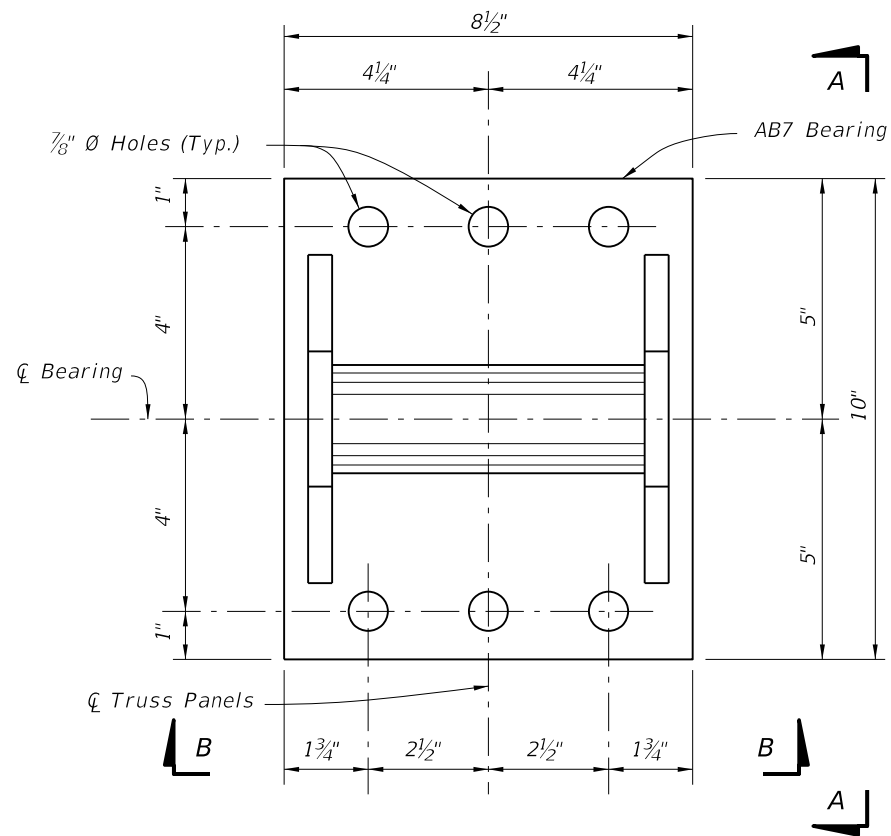
TYPICAL SECTION THRU DETOUR BRIDGE AT INTERIOR BENTS (TYPICAL SECTION AT END BENTS SIMILAR WITHOUT DISTRIBUTING BEAMS)
 (TIMBER PILE SHOWN, STEEL H PILES AND STEEL PIPE PILE SIMILAR)

Contractor supplied foundations components, including Bearing Saddle Plates, Keeper Bars & Shim.
 FDOT supplies Temporary Bridge Components including Fixed & Expansion Bearings

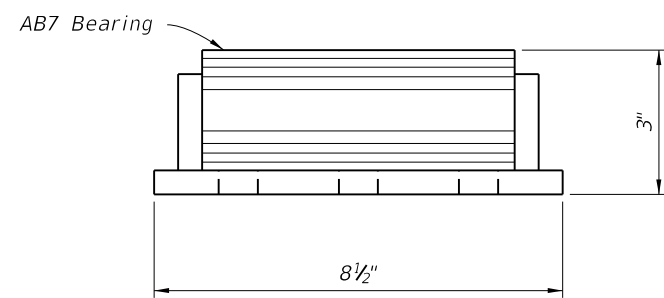
6/28/2012 3:17:54 PM rd960rh C:\projects\standards\structures\2013book\21600-4of7.dgn

LAST REVISION	REVISION	DESCRIPTION:	 FDOT DESIGN STANDARDS 2013	TEMPORARY DETOUR BRIDGE GENERAL NOTES AND DETAILS	INDEX NO.	SHEET NO.
07/01/06					21600	4

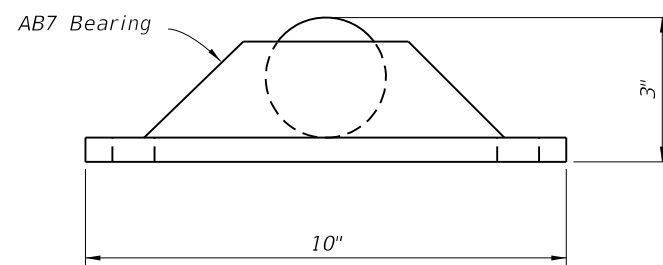
6/28/2012 3:17:56 PM rd960rh C:\projects\standards\structures\2013book\21600-5of7.dgn



PLAN VIEW

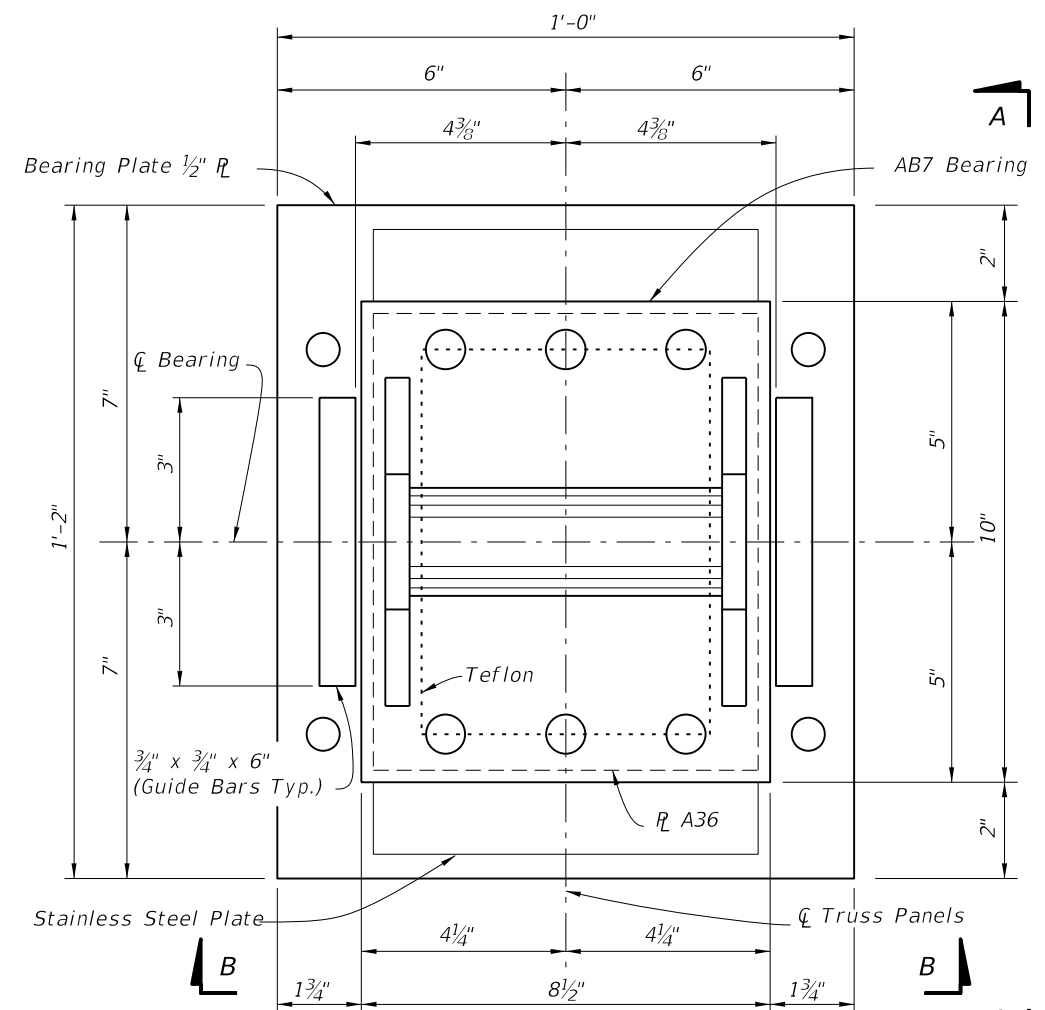


VIEW B-B

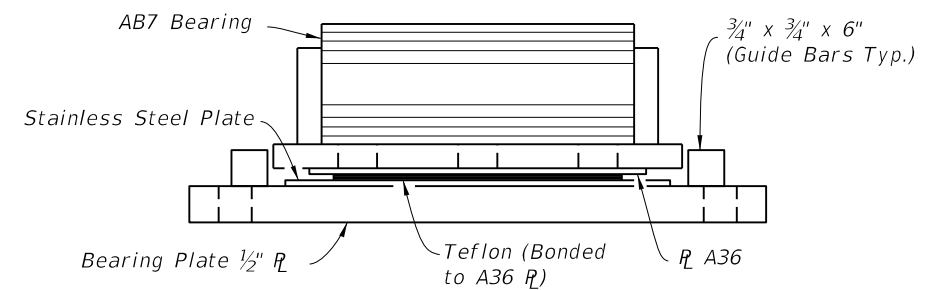


VIEW A-A

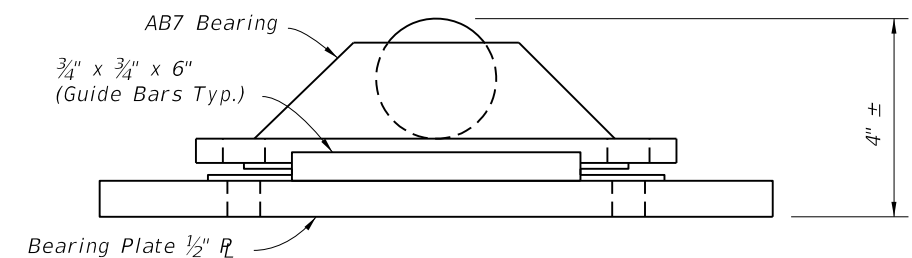
== DETAILS FOR FDOT SUPPLIED FIXED BEARINGS ==



PLAN VIEW



VIEW B-B



VIEW A-A

== DETAILS FOR FDOT SUPPLIED EXPANSION BEARINGS ==

LAST REVISION	DESCRIPTION:
01/01/10	

REVISION	DESCRIPTION:

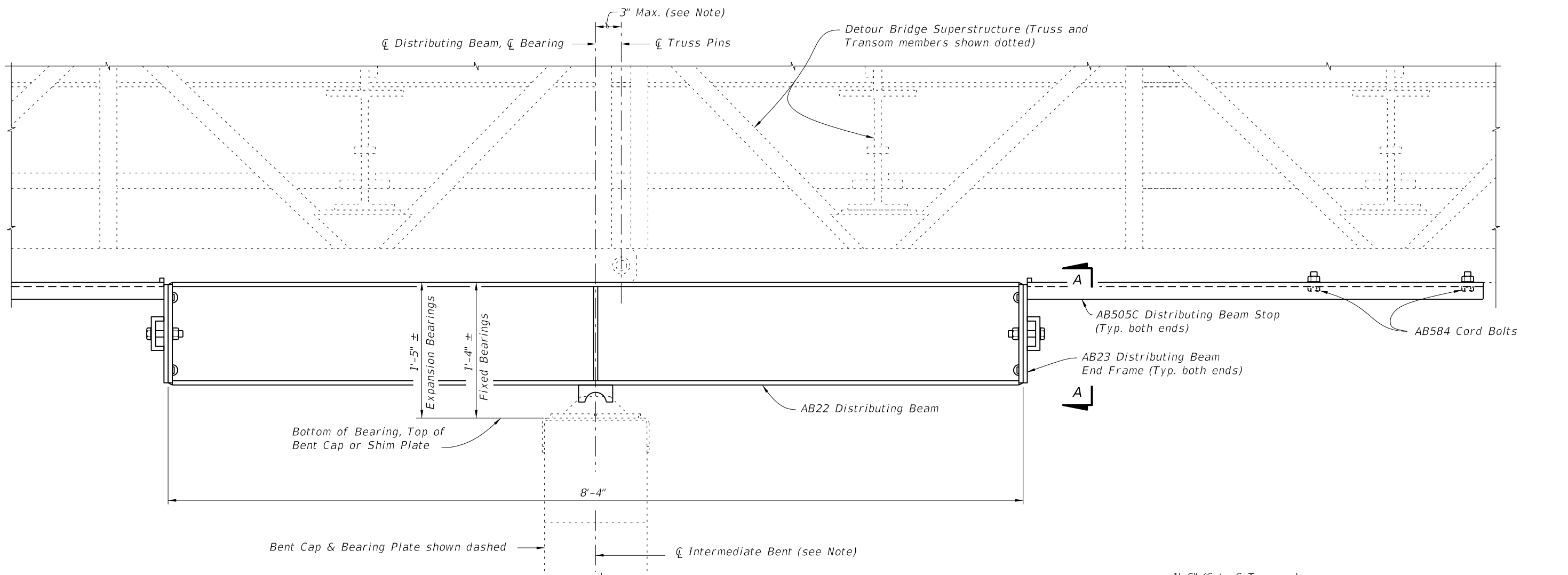


FDOT DESIGN STANDARDS
2013

TEMPORARY DETOUR BRIDGE
GENERAL NOTES AND DETAILS

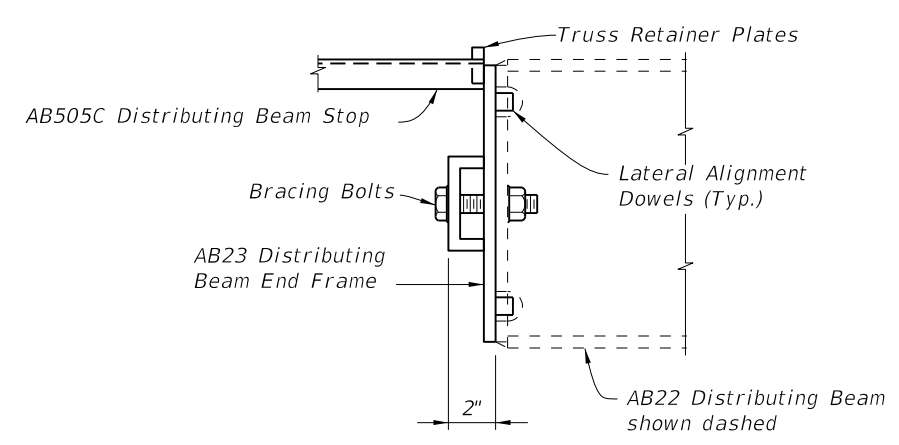
INDEX NO.	SHEET NO.
21600	5

6/28/2012 3:17:58 PM rd960rh C:\projects\standards\structures\2013book\21600-6of7.dgn

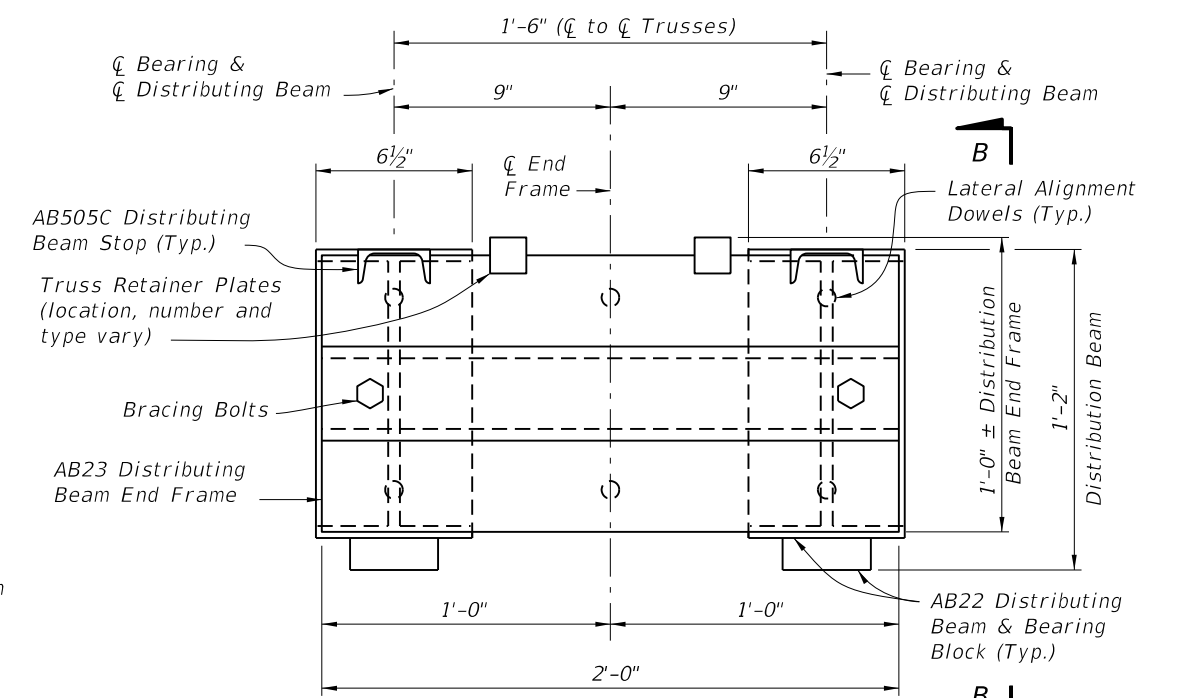


ELEVATION VIEW OF DISTRIBUTING BEAM
 (FIXED BEARING SHOWN, EXPANSION BEARING SIMILAR)
 (Timber Intermediate Bent shown, Steel H Pile and Steel Pipe Pile Intermediate Bents similar)

Note:
 \bar{C} Bearing may be shifted from \bar{C} Truss Pins as shown, \bar{C} Intermediate Bent may be shifted from \bar{C} Bearing an additional 3" to allow for pile placement tolerances.

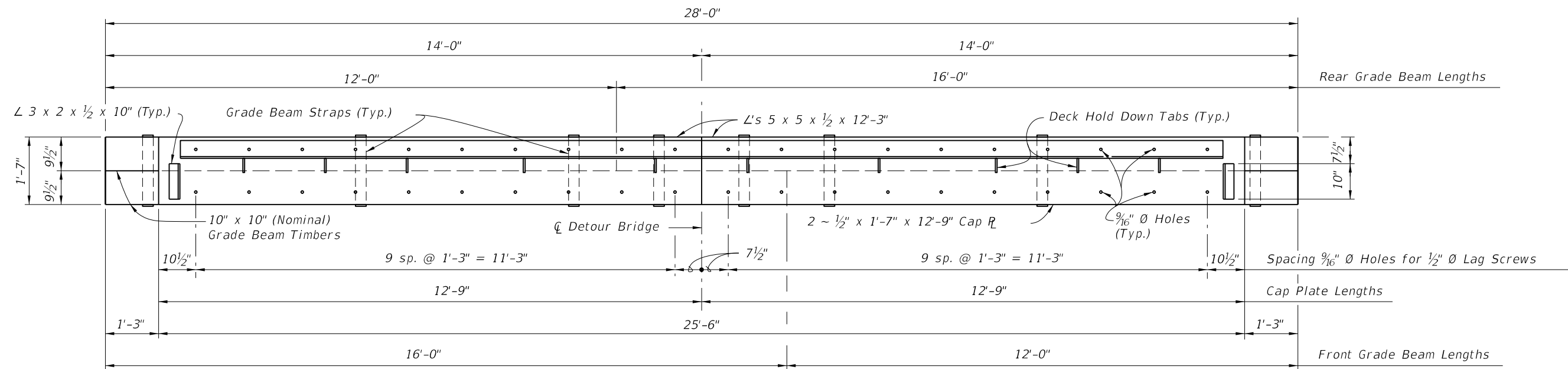


VIEW B-B

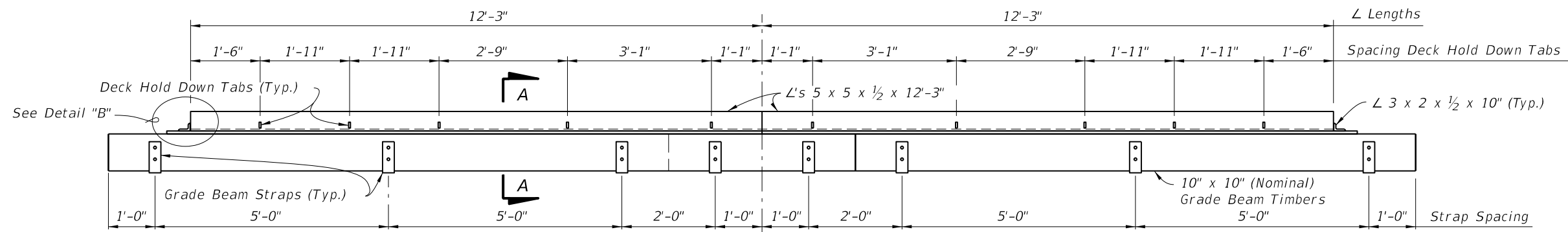


END VIEW A-A
 DISTRIBUTING BEAM END FRAME DETAIL

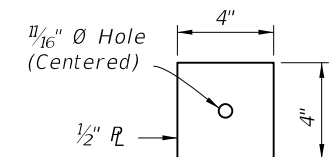
LAST REVISION	07/01/06	DESCRIPTION:	FDOT DESIGN STANDARDS 2013	TEMPORARY DETOUR BRIDGE GENERAL NOTES AND DETAILS	INDEX NO. 21600	SHEET NO. 6
---------------	----------	--------------	--------------------------------------	--	---------------------------	-----------------------



PLAN VIEW

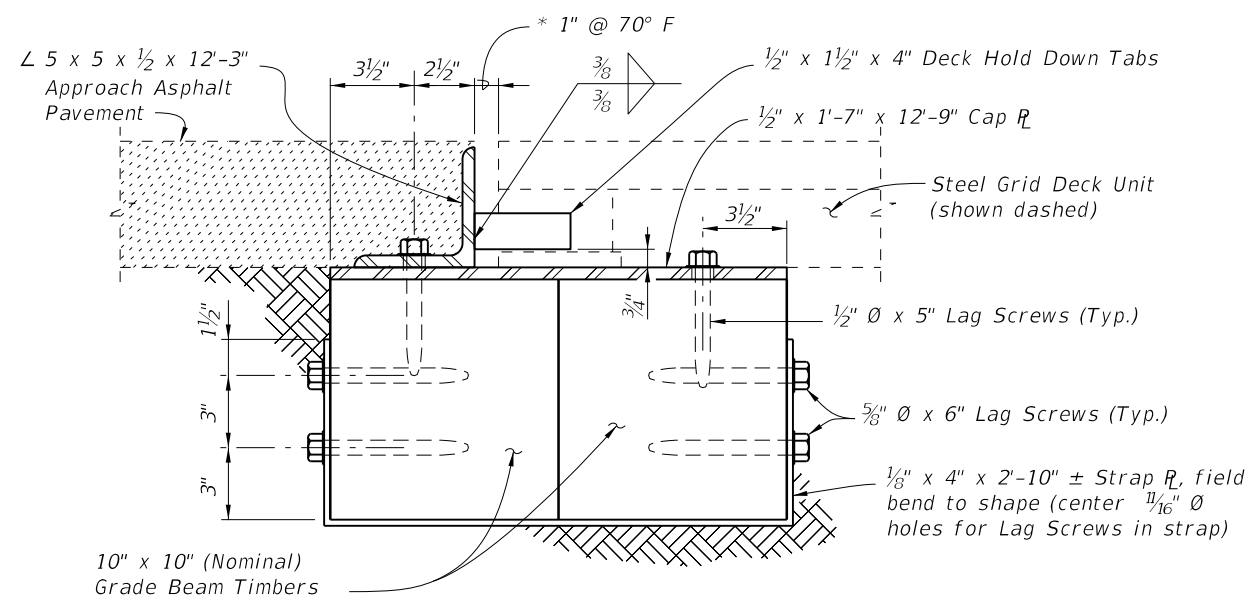


ELEVATION VIEW

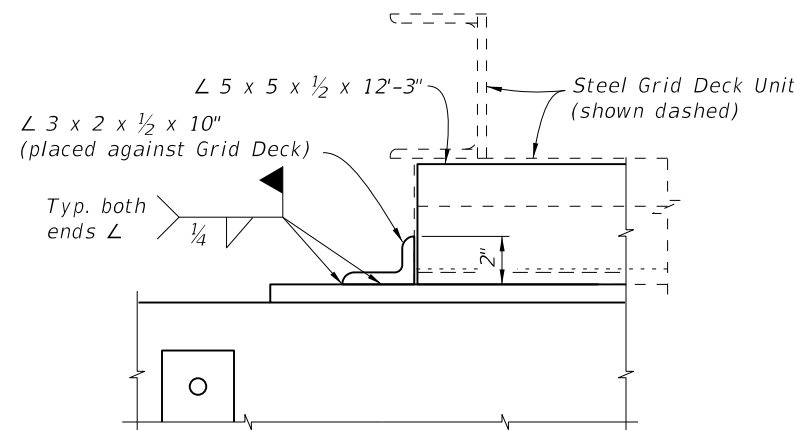


ANCHOR PLATE DETAIL

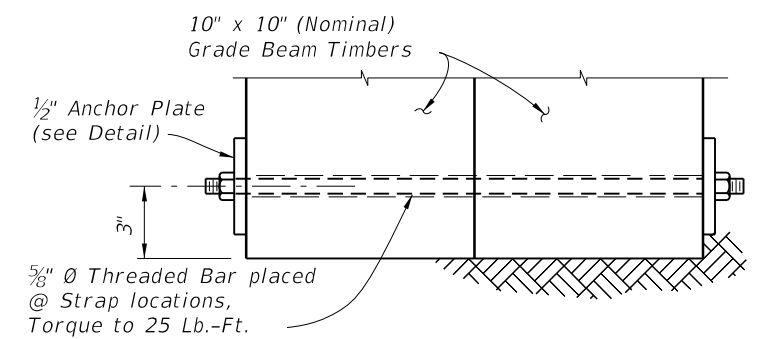
* See General Notes for setting widths other than 70° F.



SECTION A-A



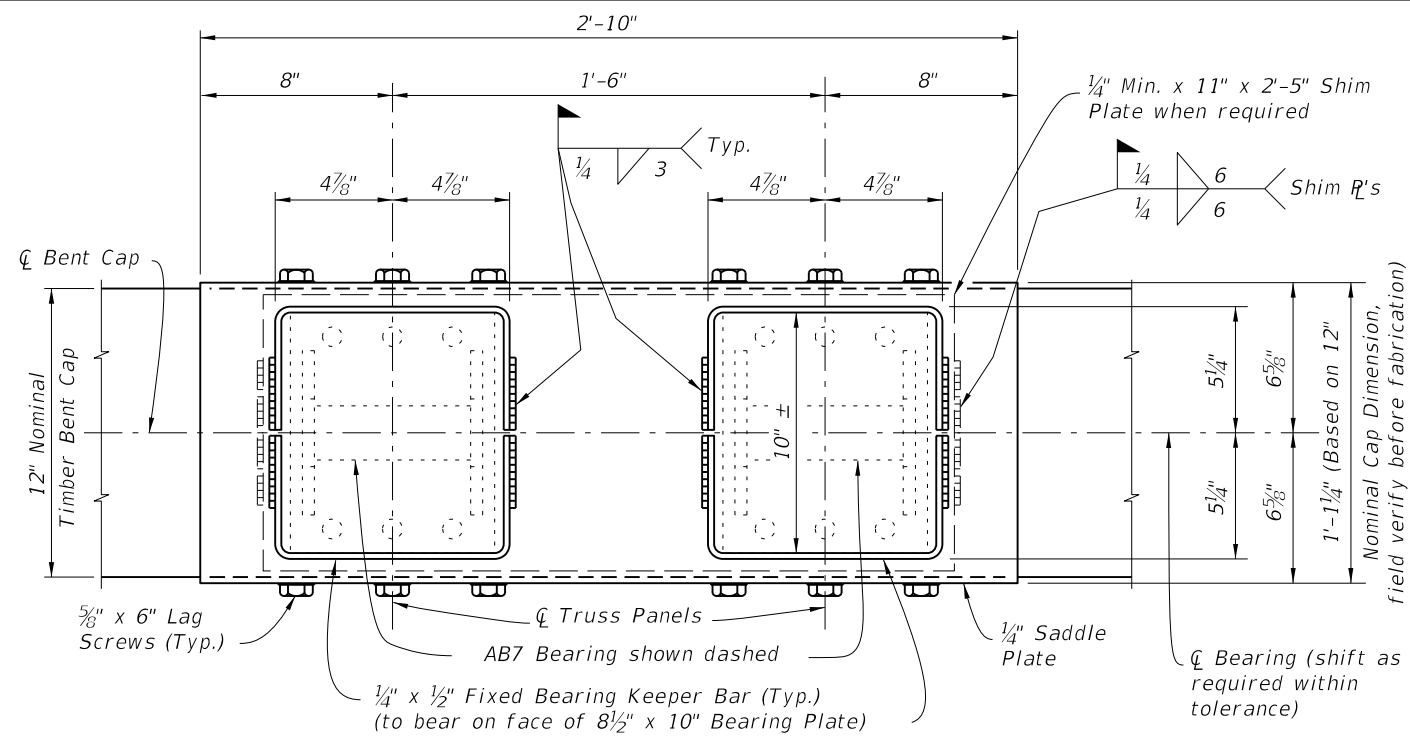
DETAIL "B"



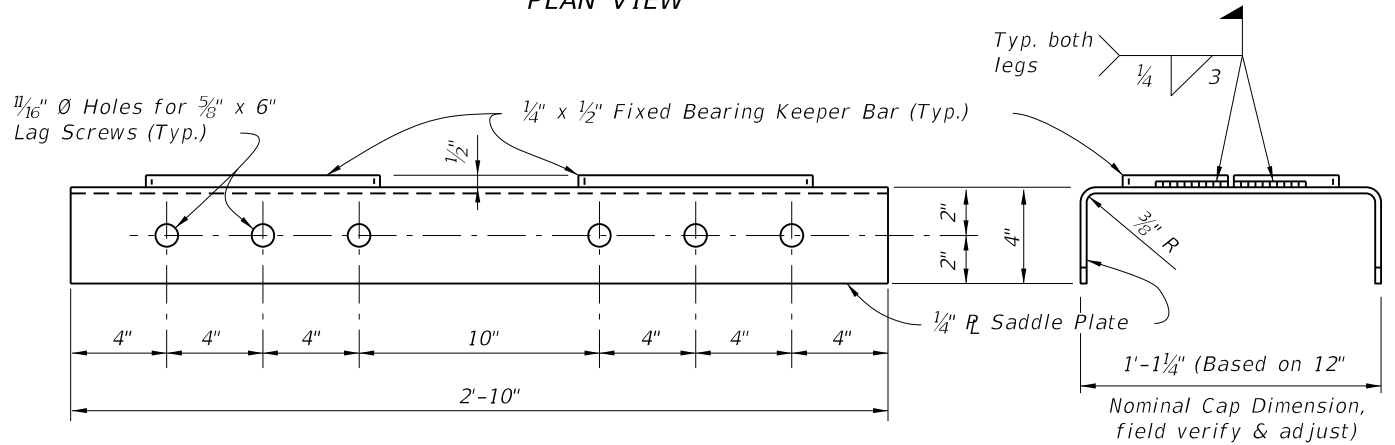
OPTIONAL THROUGH BOLT DETAIL (MAY BE USED IN LIEU OF STRAPS)

6/29/2012 3:18:01 PM rd960rh C:\projects\standards\structures\2013book\21600-7of7.dgn

LAST REVISION	REVISION	DESCRIPTION:	 FDOT DESIGN STANDARDS 2013	TEMPORARY DETOUR BRIDGE GENERAL NOTES AND DETAILS	INDEX NO.	SHEET NO.
	07/01/06				21600	7

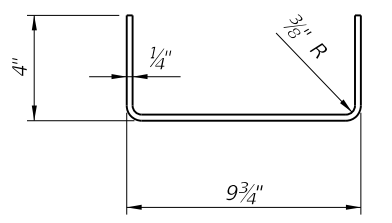


PLAN VIEW



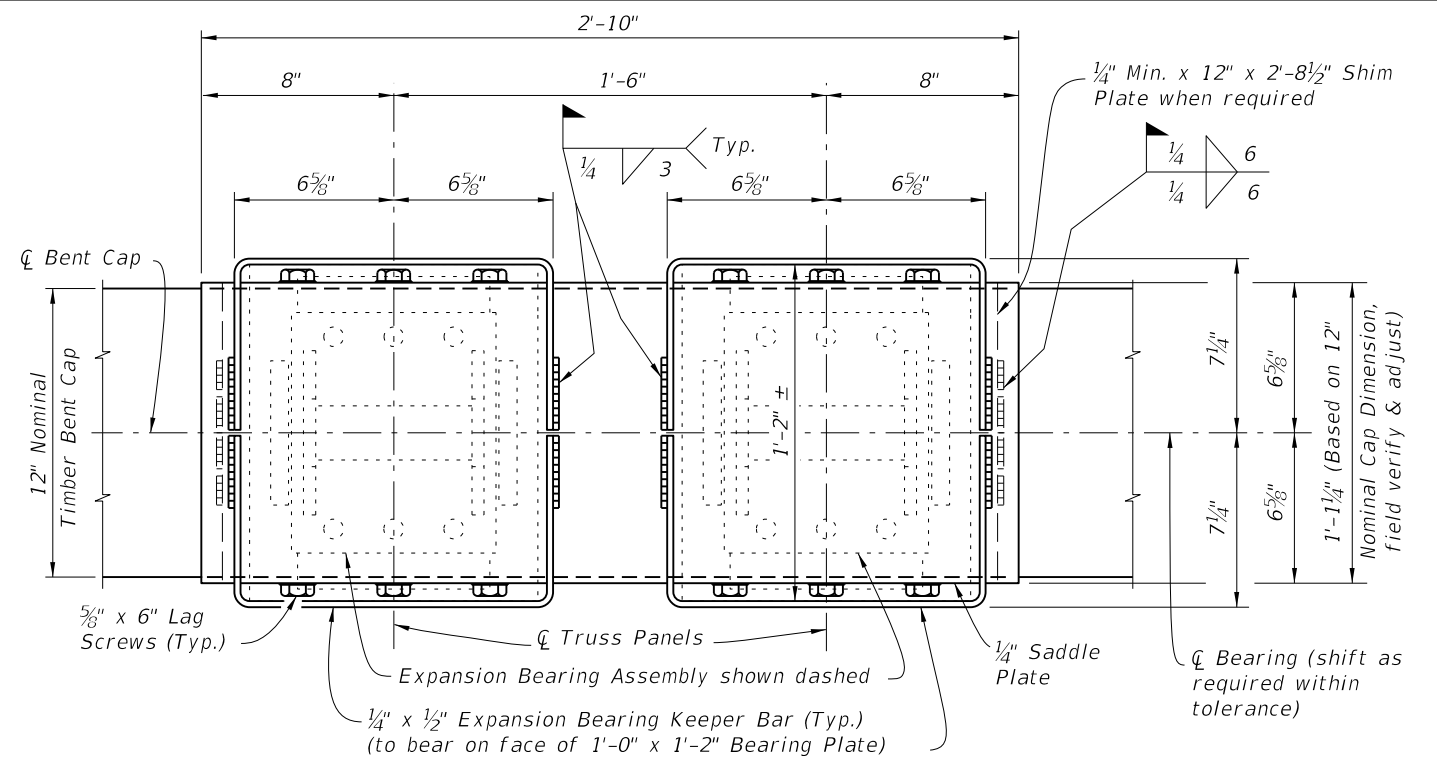
ELEVATION VIEW OF SADDLE PLATE

END VIEW

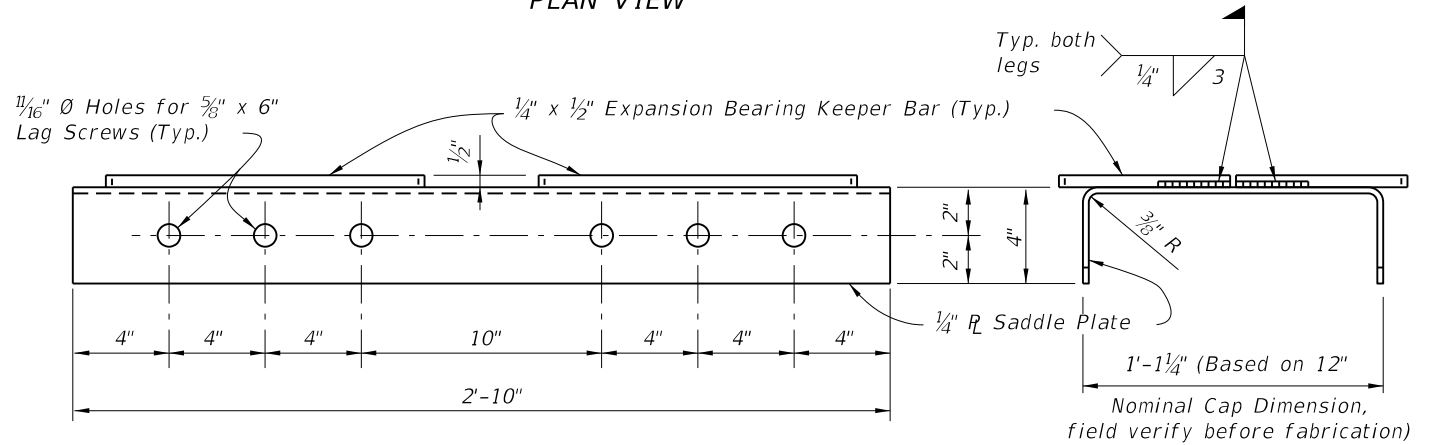


FIXED BEARING KEEPER BAR DETAIL

FIXED BEARING DETAILS

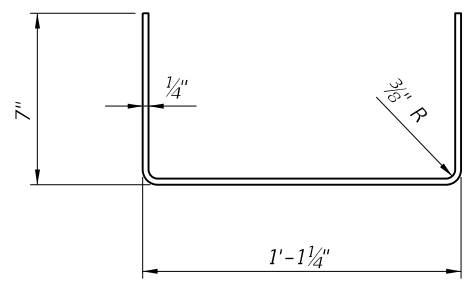


PLAN VIEW



ELEVATION VIEW OF SADDLE PLATE

END VIEW

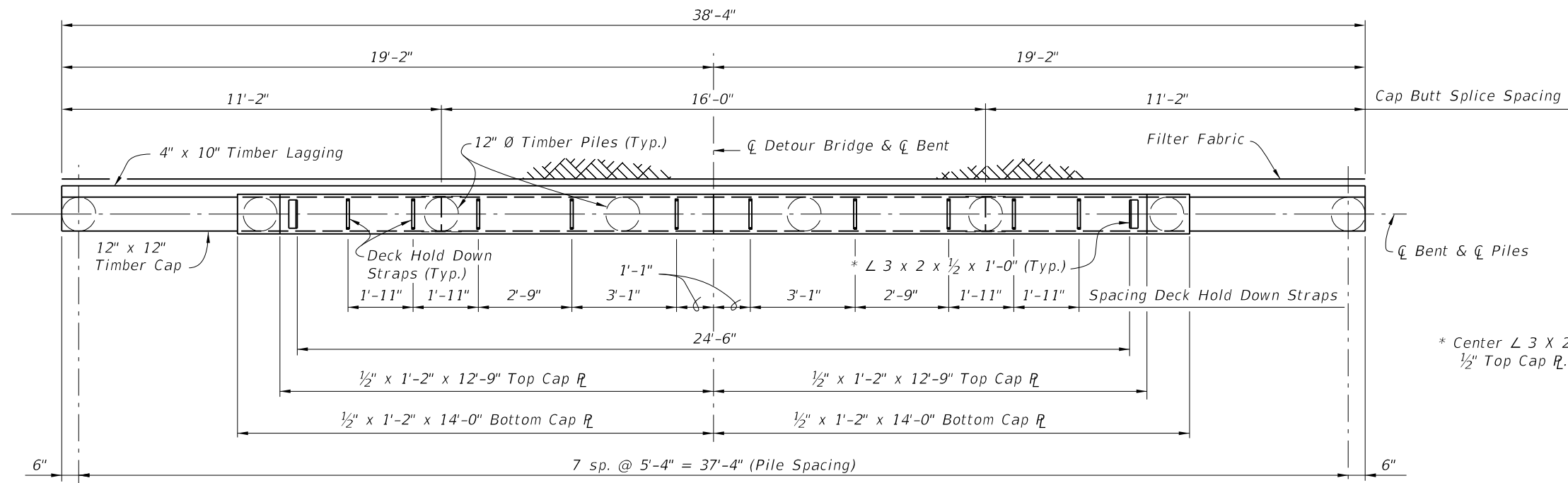


EXPANSION BEARING KEEPER BAR DETAIL

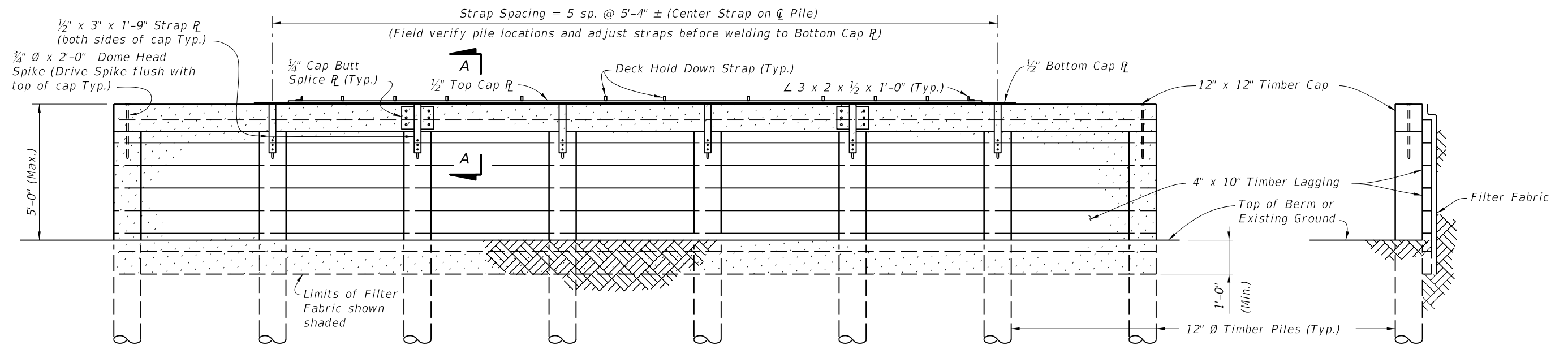
EXPANSION BEARING DETAILS

6/29/2012 3:18:05 PM rd960rh C:\projects\standards\structures\2013book\21610-1of3.dgn

LAST REVISION	DESCRIPTION:	 FDOT DESIGN STANDARDS 2013	TEMPORARY DETOUR BRIDGE DETAILS - TIMBER PILE FOUNDATIONS	INDEX NO.	SHEET NO.
07/01/06				21610	1



PLAN VIEW



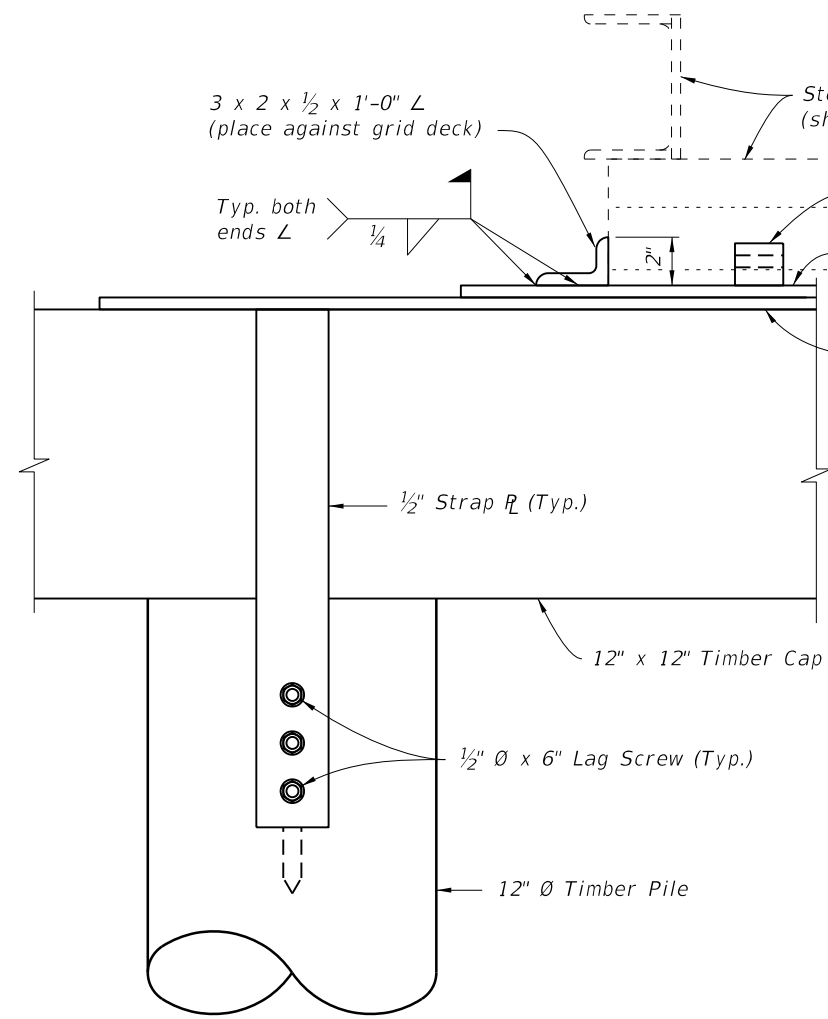
ELEVATION VIEW

END VIEW

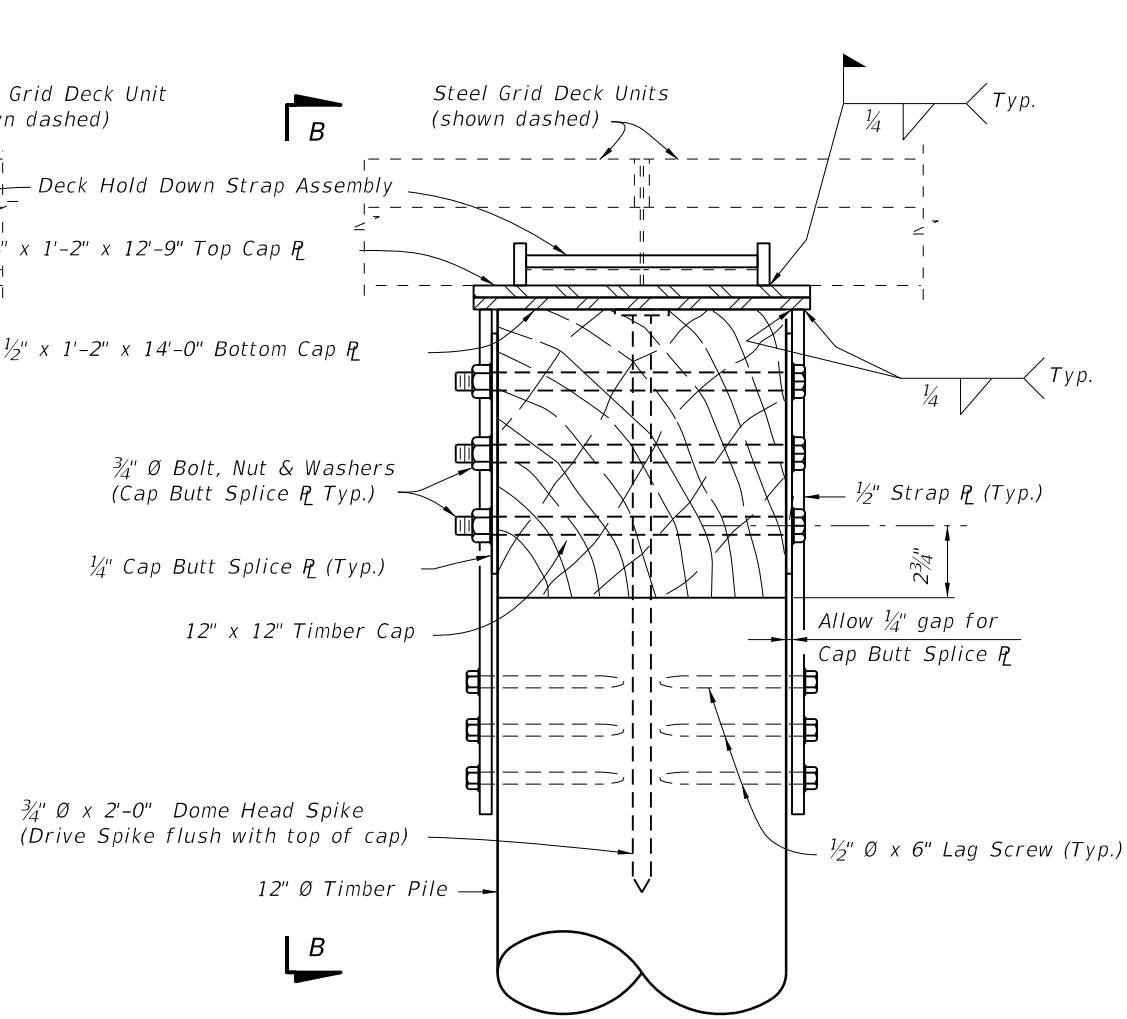
BACKWALL BENT DETAILS

6/29/2012 3:18:07 PM rd960/h C:\projects\standards\structures\2013book\21610-2of3.dgn

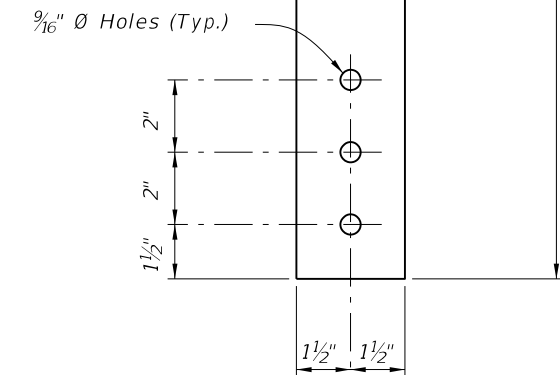
LAST REVISION	DESCRIPTION:	 FDOT DESIGN STANDARDS 2013	TEMPORARY DETOUR BRIDGE DETAILS - TIMBER PILE FOUNDATIONS	INDEX NO.	SHEET NO.
07/01/06				21610	2



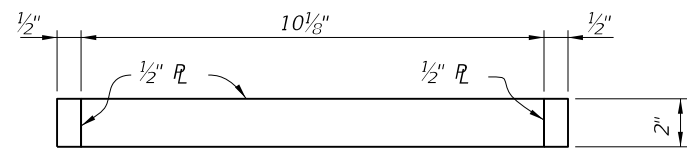
VIEW B-B
 (SHOWING END OF CAP PLATES)



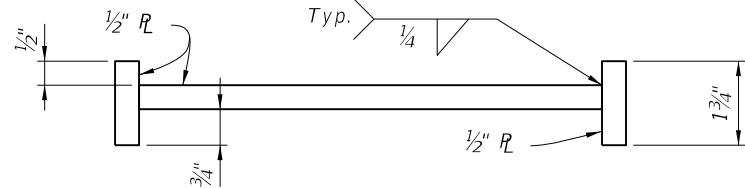
SECTION A-A



STRAP PLATE DETAIL

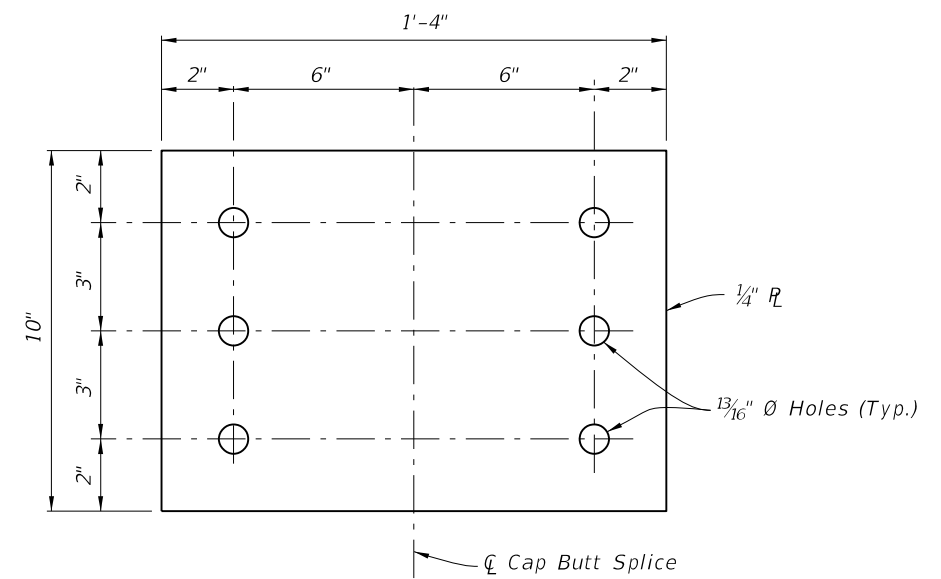


PLAN VIEW



ELEVATION VIEW

HOLD DOWN STRAP ASSEMBLY DETAIL



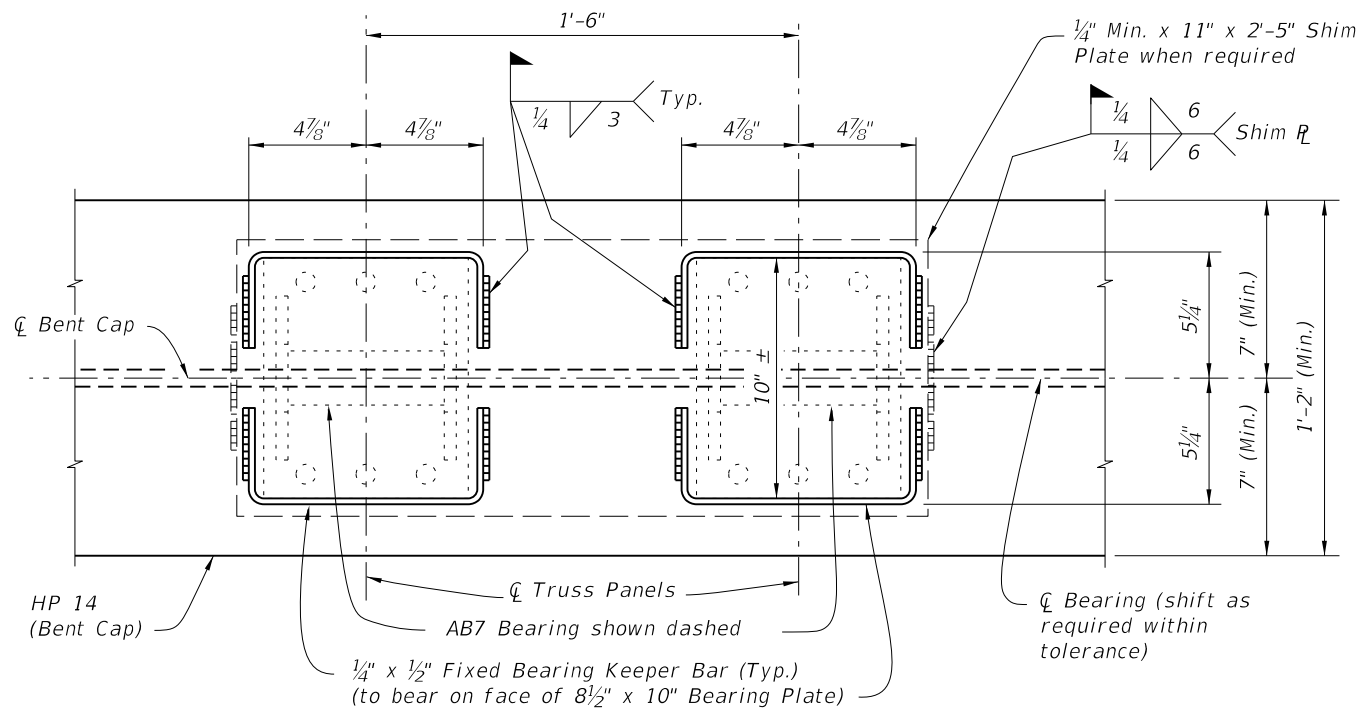
CAP BUTT SPLICE PLATE DETAIL

BACKWALL BENT DETAILS

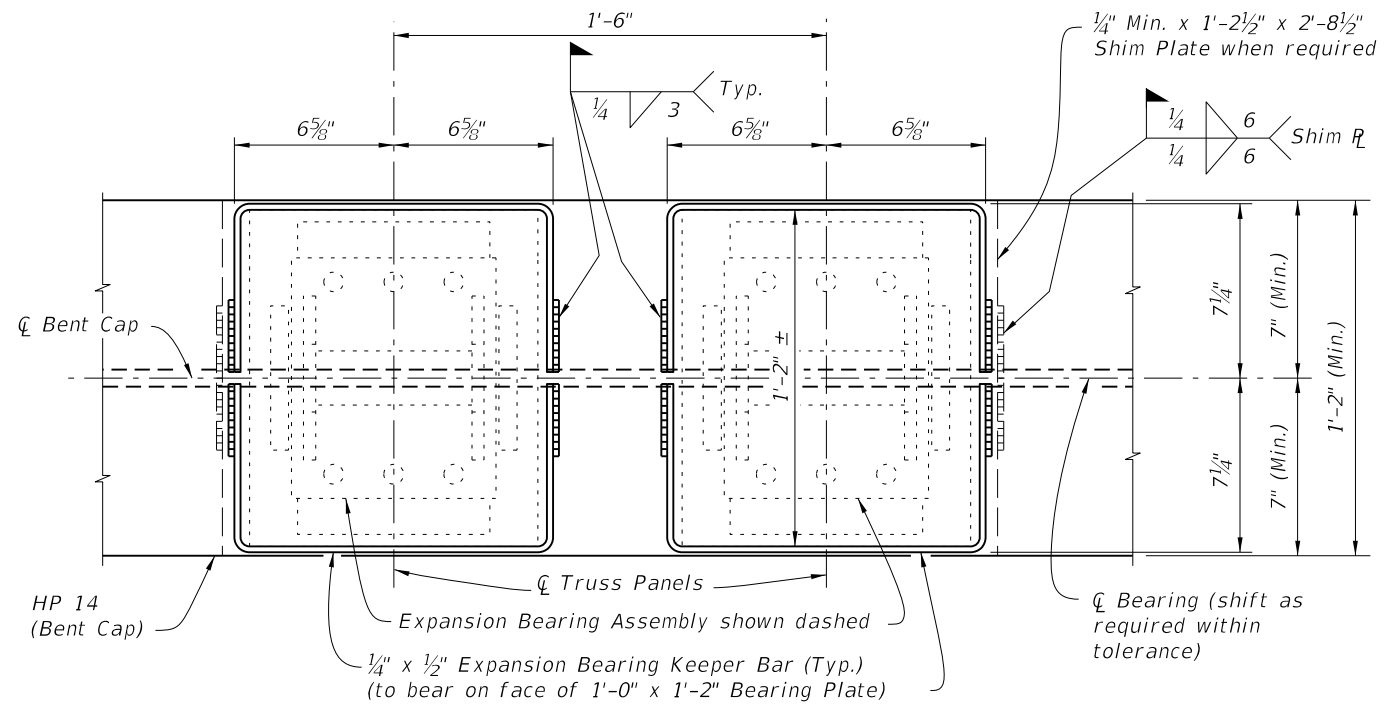
C:\projects\standards\structures\2013book\21610-3of3.dgn
 rd960rh
 3:18:09 PM
 6/29/2012

LAST REVISION	DESCRIPTION:	 FDOT DESIGN STANDARDS 2013	TEMPORARY DETOUR BRIDGE DETAILS - TIMBER PILE FOUNDATIONS	INDEX NO.	SHEET NO.
07/01/06				21610	3

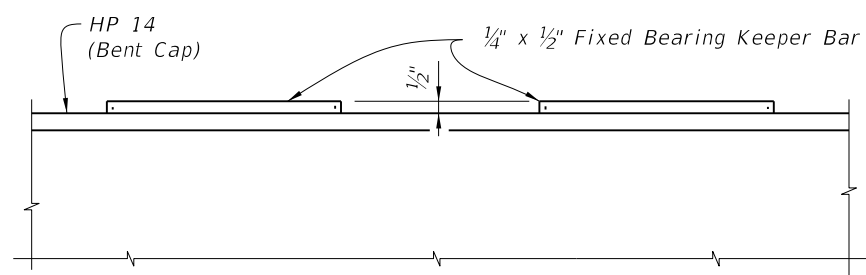
6/28/2012 3:18:12 PM rd9607h C:\projects\standards\structures\2013book\21620-1of2.dgn



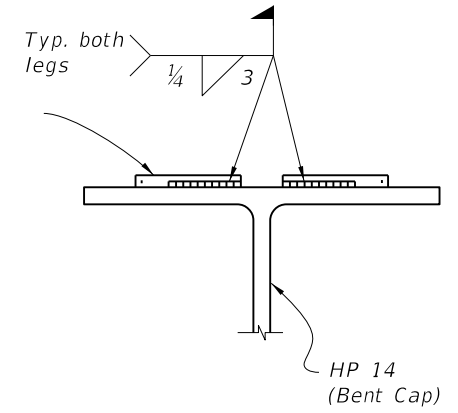
PARTIAL PLAN VIEW



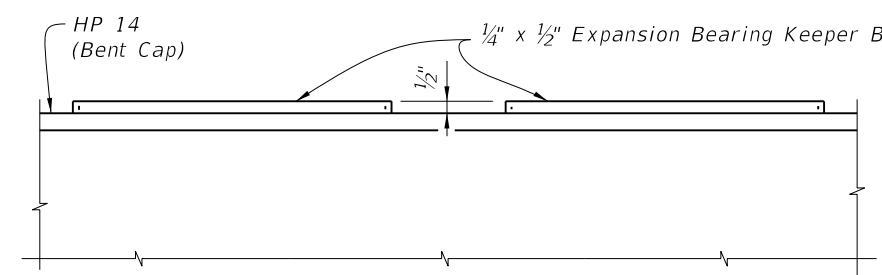
PARTIAL PLAN VIEW



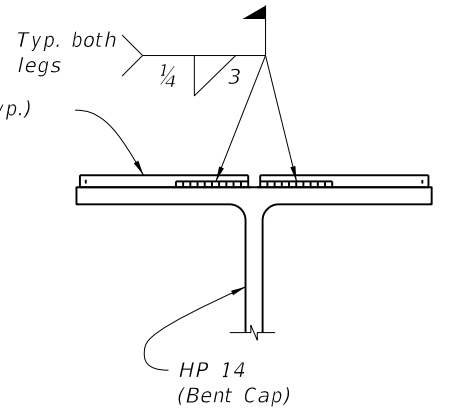
PARTIAL ELEVATION VIEW



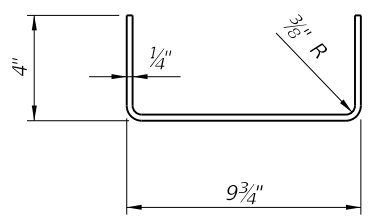
END VIEW



PARTIAL ELEVATION VIEW

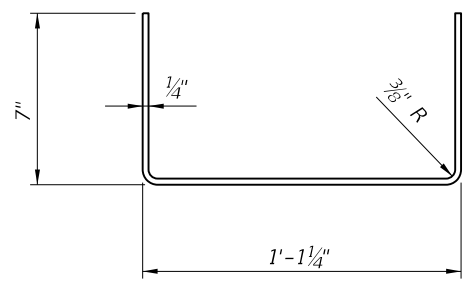


END VIEW



FIXED BEARING KEEPER BAR DETAIL

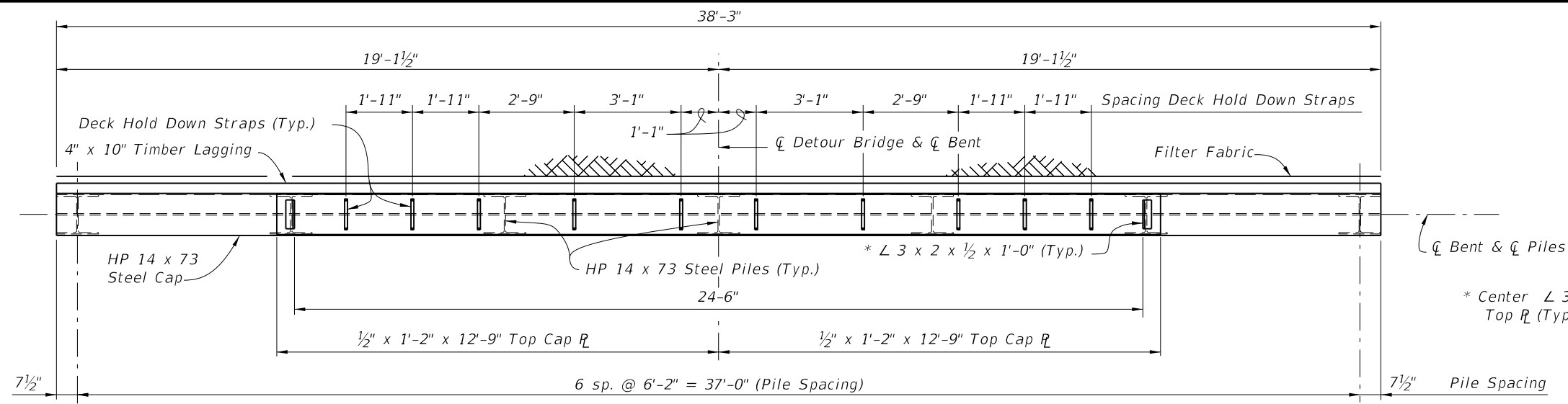
==== FIXED BEARING DETAILS ====



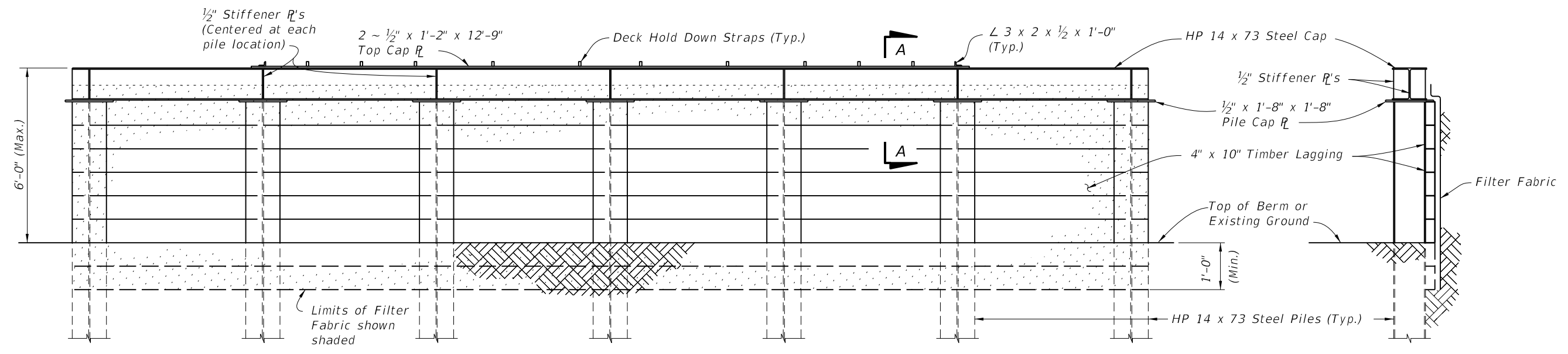
EXPANSION BEARING KEEPER BAR DETAIL

==== EXPANSION BEARING DETAILS ====

LAST REVISION	DESCRIPTION:	 FDOT DESIGN STANDARDS 2013	TEMPORARY DETOUR BRIDGE DETAILS - STEEL H PILE FOUNDATIONS	INDEX NO.	SHEET NO.
07/01/06				21620	1

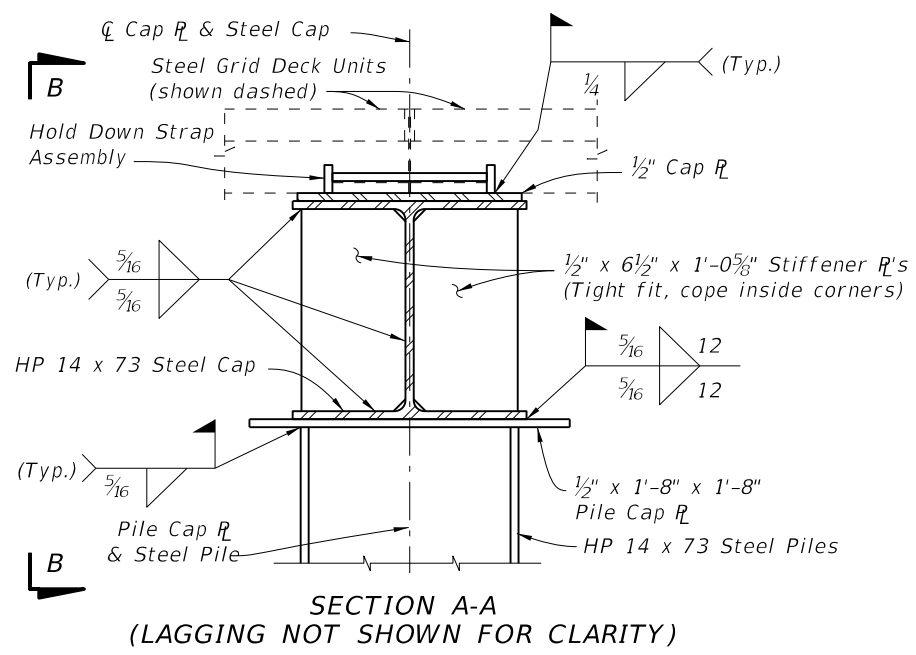


PLAN VIEW

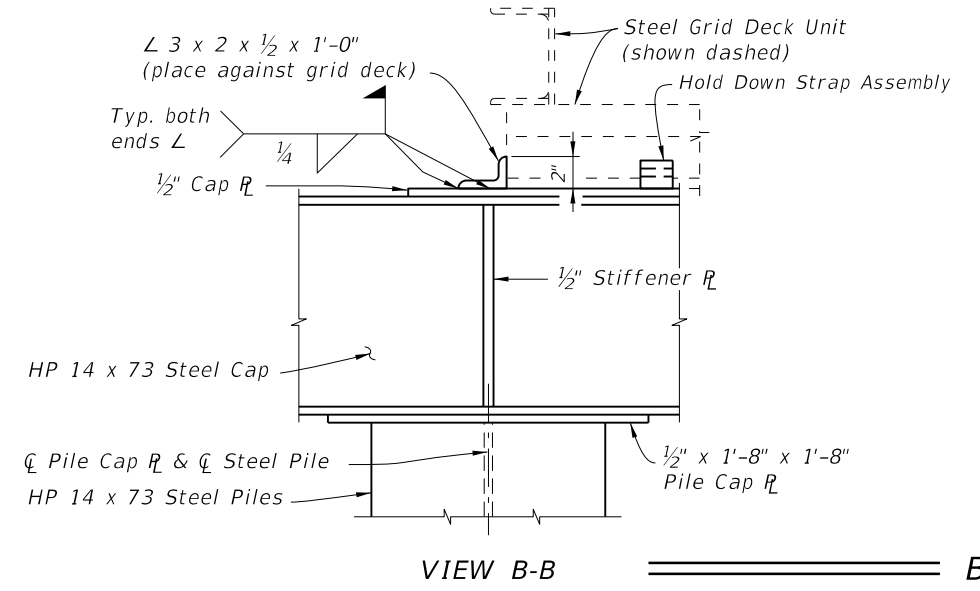


ELEVATION VIEW

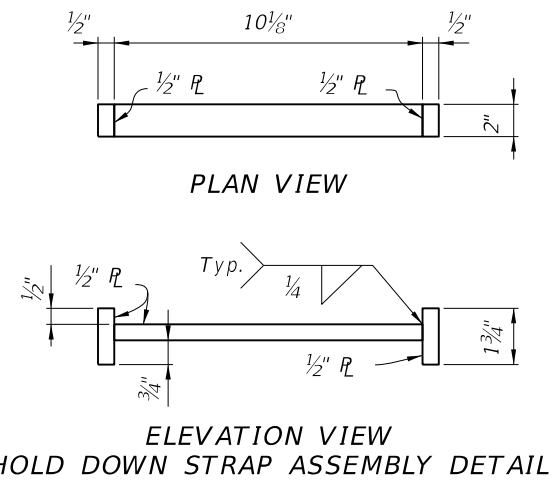
END VIEW



SECTION A-A
(LAGGING NOT SHOWN FOR CLARITY)



VIEW B-B



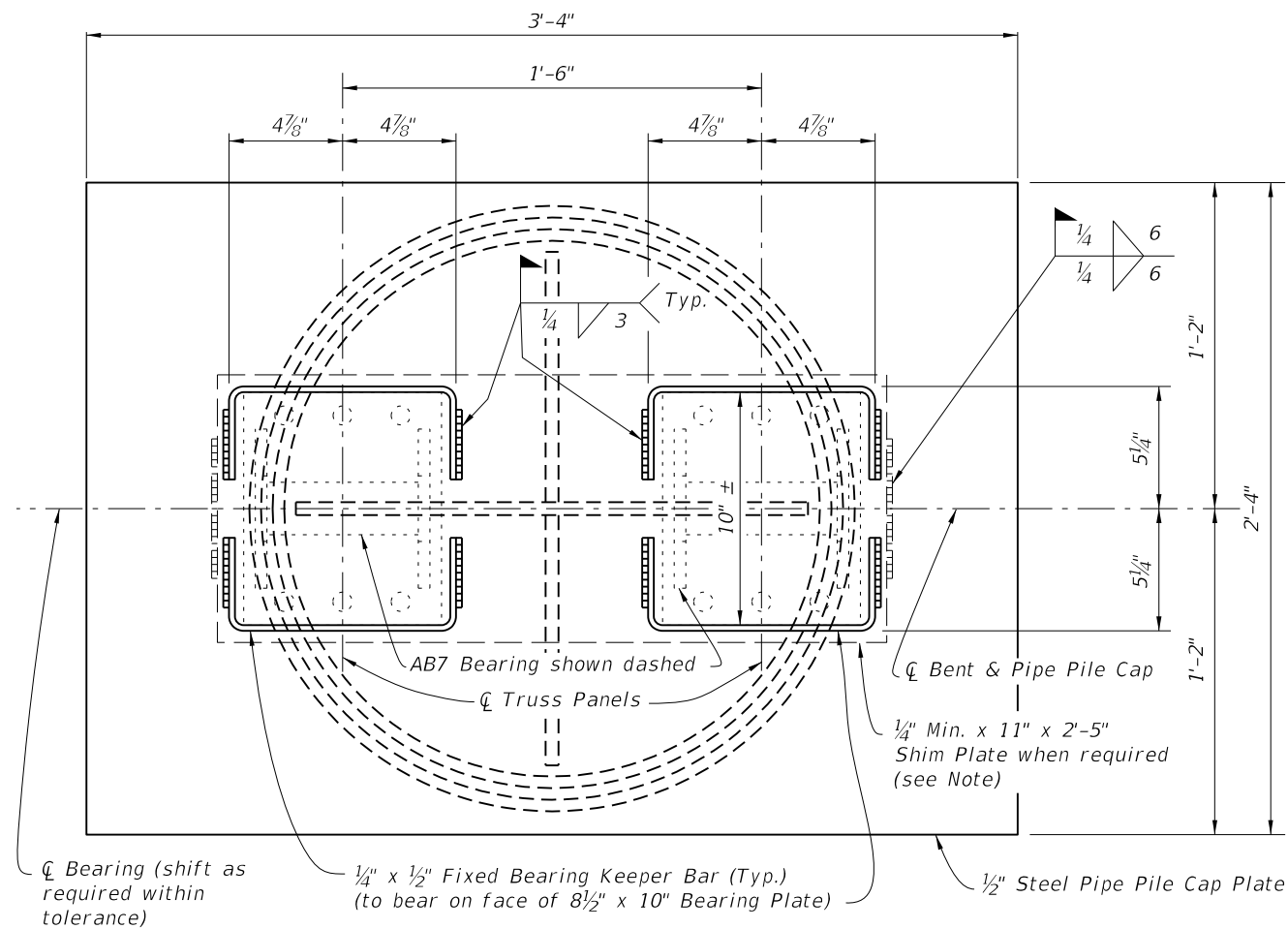
PLAN VIEW

ELEVATION VIEW
HOLD DOWN STRAP ASSEMBLY DETAIL

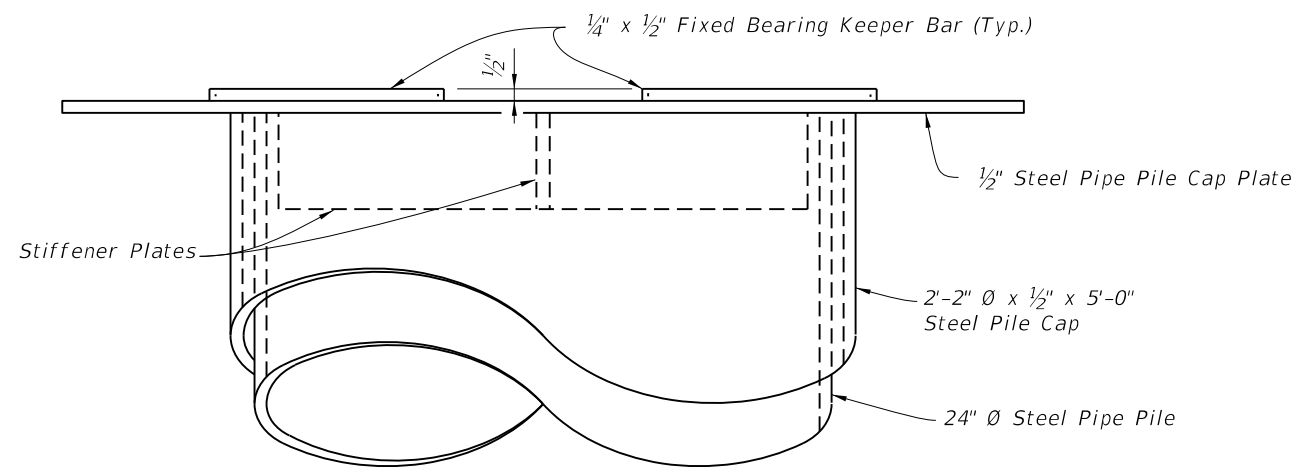
BACKWALL BENT DETAILS

C:\projects\standards\structures\2013book\21620-2of2.dgn 6/28/2012 3:18:14 PM rd960rh

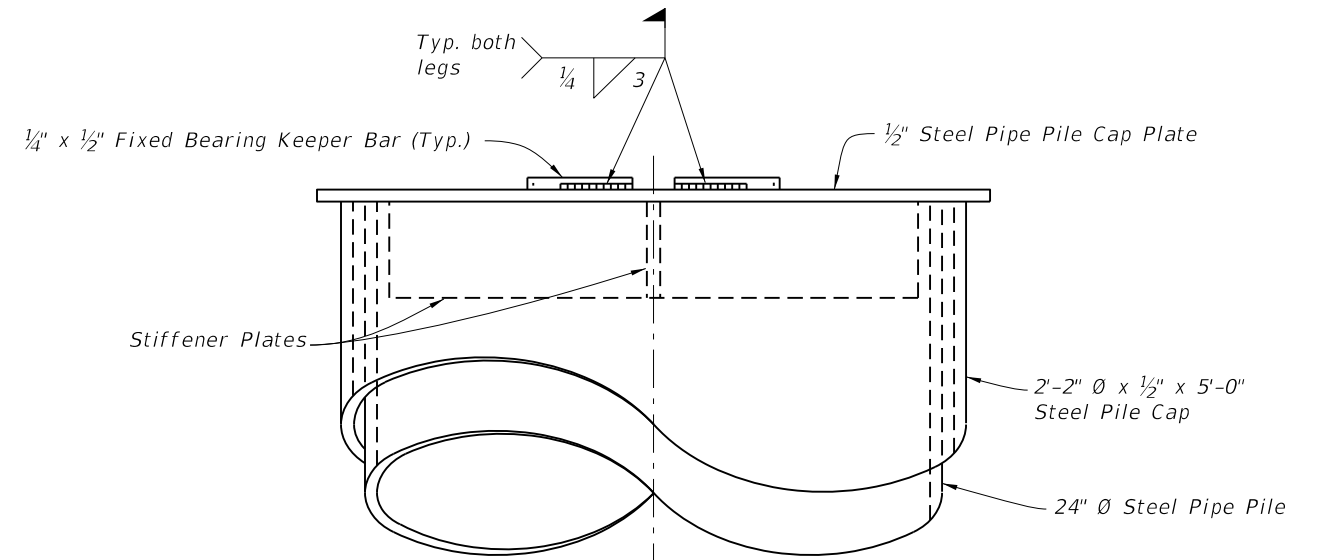
LAST REVISION	DESCRIPTION:	 FDOT DESIGN STANDARDS 2013	TEMPORARY DETOUR BRIDGE DETAILS - STEEL H PILE FOUNDATIONS	INDEX NO.	SHEET NO.
07/01/06				21620	2



PARTIAL PLAN VIEW

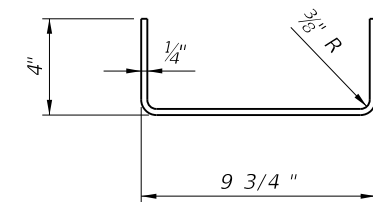


PARTIAL ELEVATION VIEW



END VIEW

Note:
Use Shim Plates as required to provide equal bearing seat elevations across the bent. Vary thickness of Shim Plate across the pile cap plate to provide a level bearing area in the transverse direction.



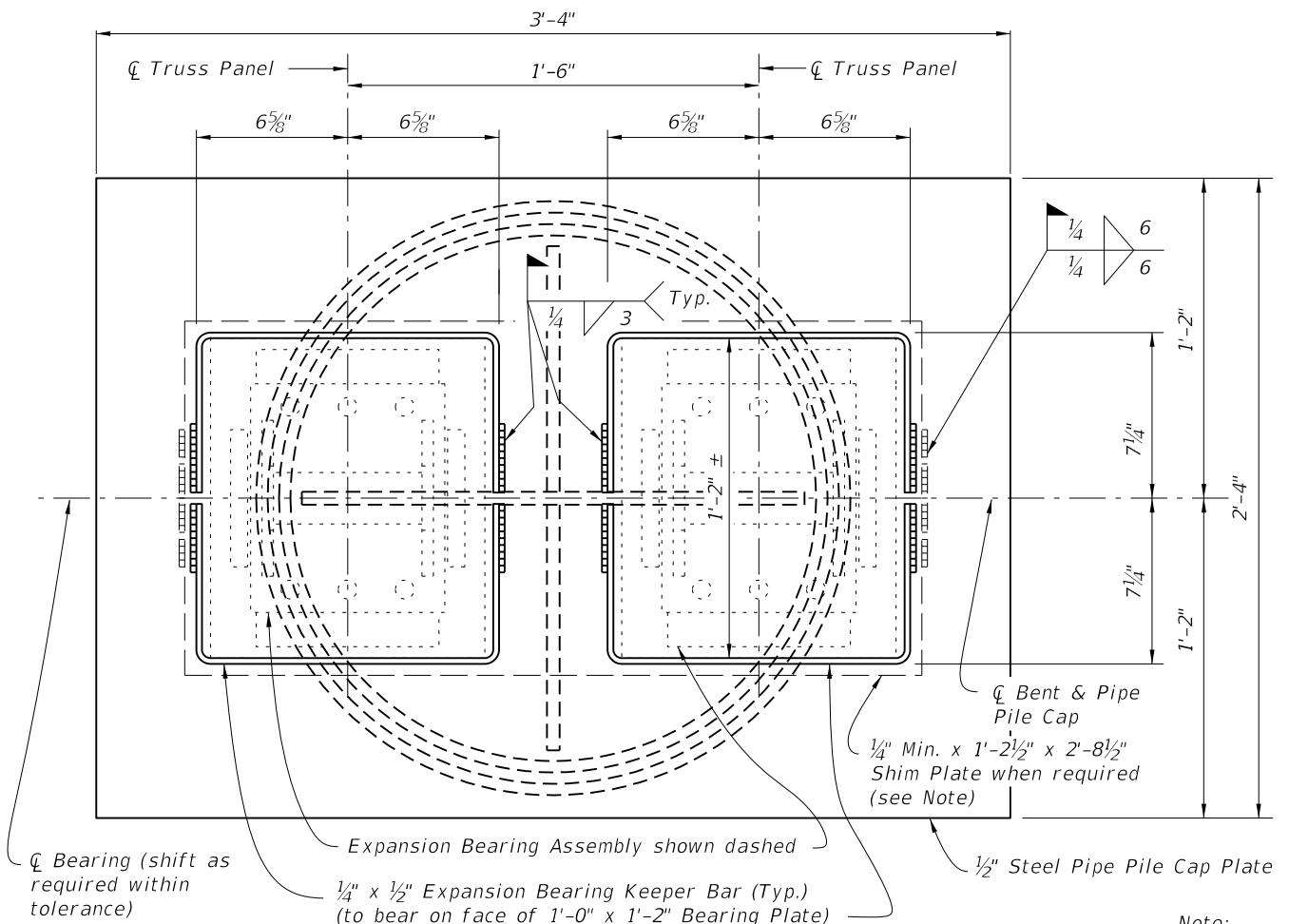
FIXED BEARING KEEPER BAR DETAIL

FIXED BEARING DETAILS

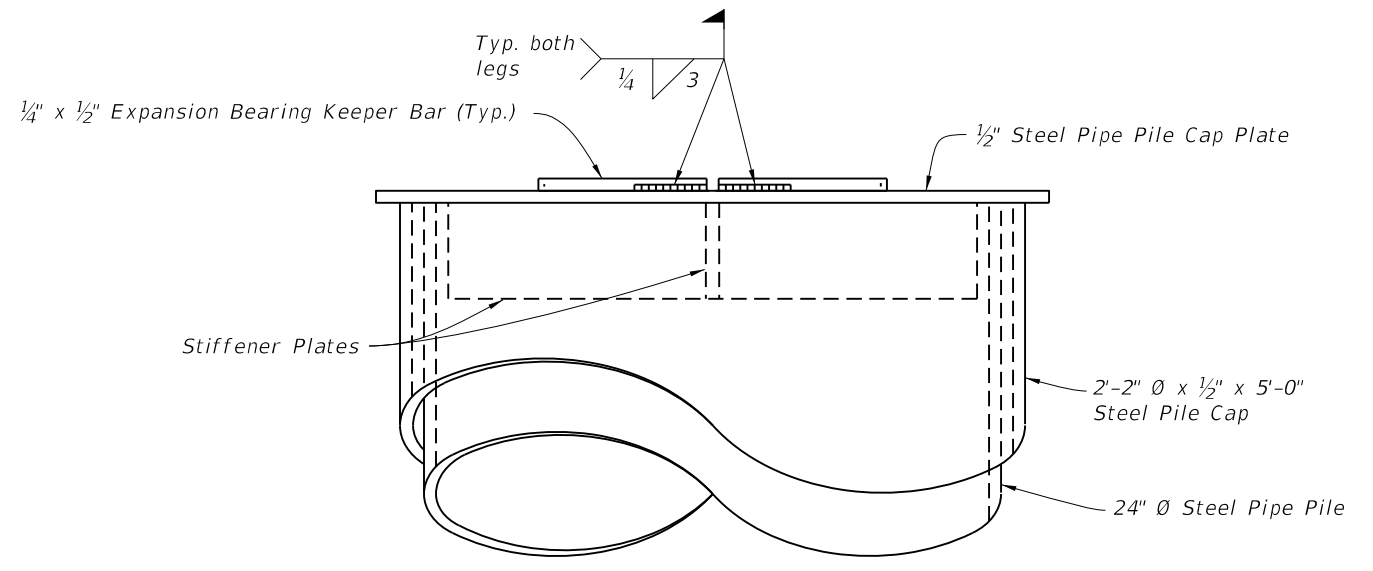
6/29/2012 3:18:18 PM rd960rh C:\projects\standards\structures\2013book\21630-2of3.dgn

LAST REVISION 07/01/06	DESCRIPTION:	 FDOT DESIGN STANDARDS 2013	TEMPORARY DETOUR BRIDGE DETAILS - STEEL PIPE PILE FOUNDATIONS	INDEX NO. 21630	SHEET NO. 2

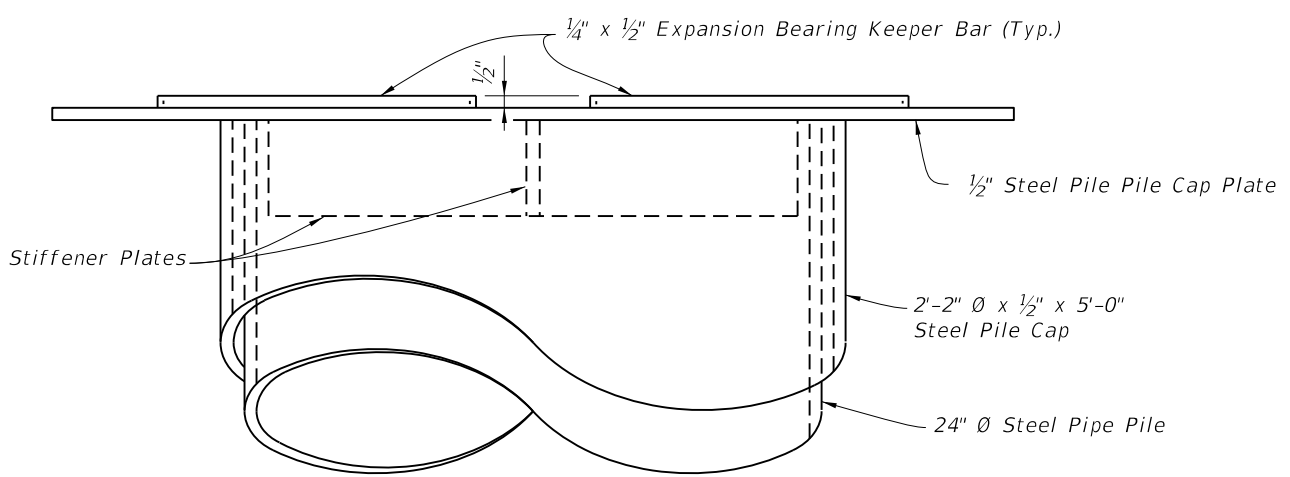
6/29/2012 3:18:21 PM rd960rh C:\projects\standards\structures\2013book\21630-3of3.dgn



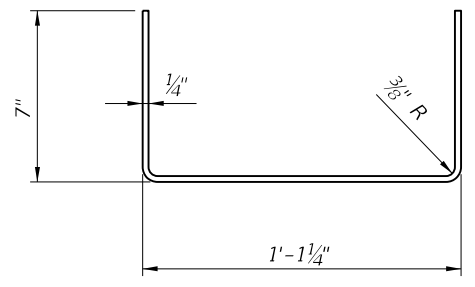
PARTIAL PLAN VIEW



END VIEW



PARTIAL ELEVATION VIEW



EXPANSION BEARING KEEPER BAR DETAIL

Note:
Use Shim Plates as required to provide equal bearing seat elevations across the bent. Vary thickness of Shim Plate across the pile cap plate to provide a level bearing area in the transverse direction.

ABUTMENT AND INTERMEDIATE EXPANSION BEARING DETAILS

LAST REVISION	REVISION	DESCRIPTION:		FDOT DESIGN STANDARDS 2013	TEMPORARY DETOUR BRIDGE DETAILS - STEEL PIPE PILE FOUNDATIONS	INDEX NO. 21630	SHEET NO. 3
07/01/06							