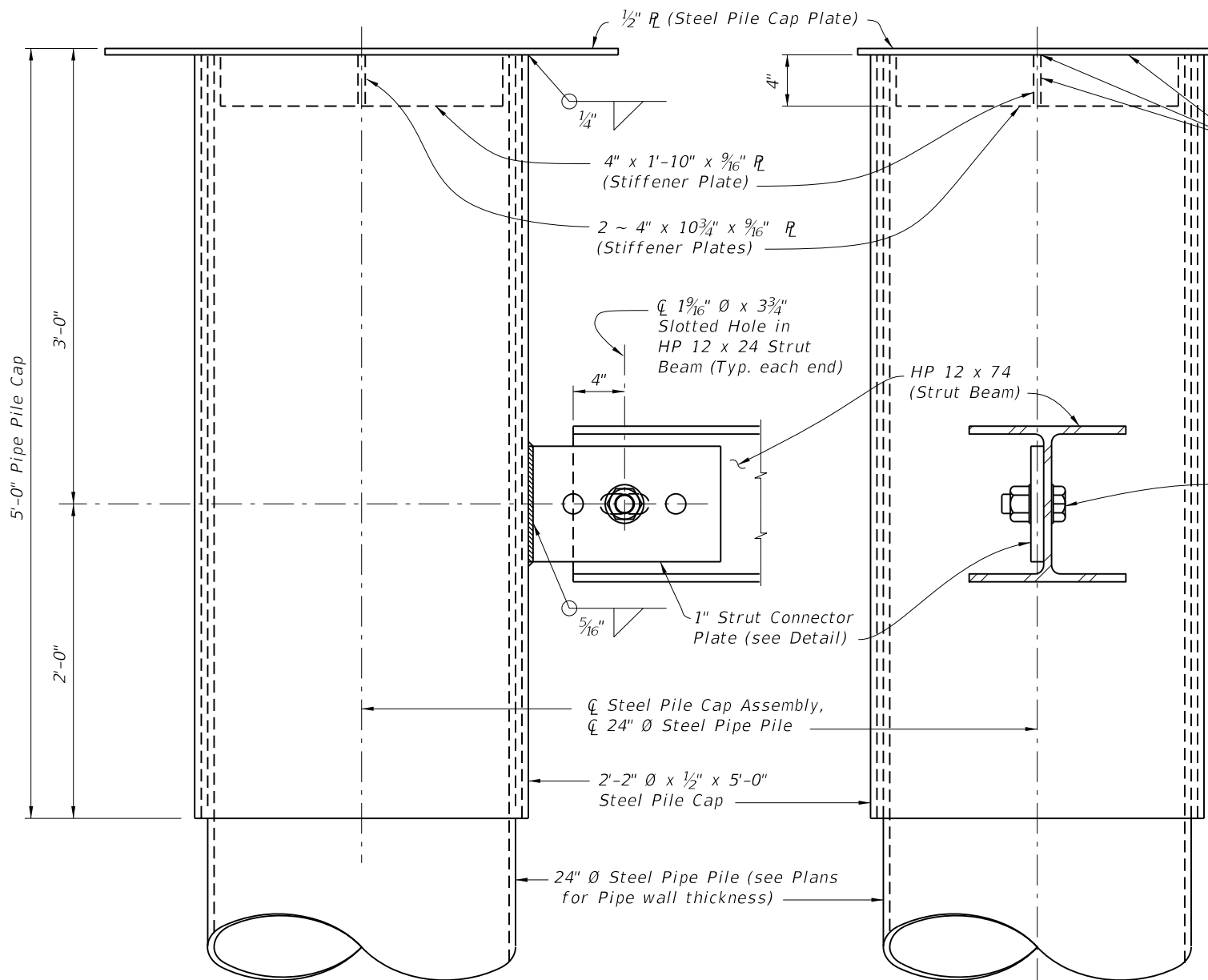
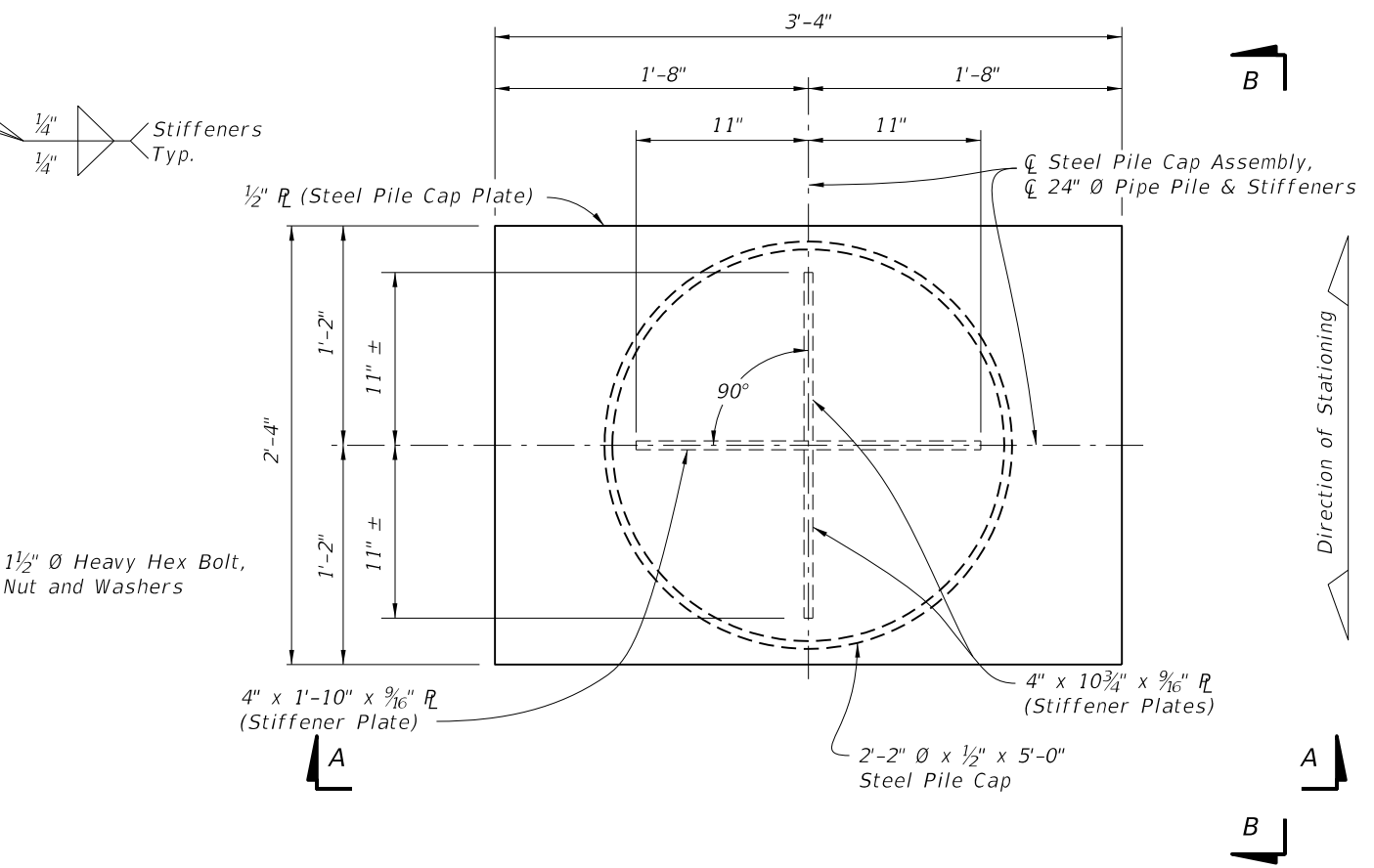


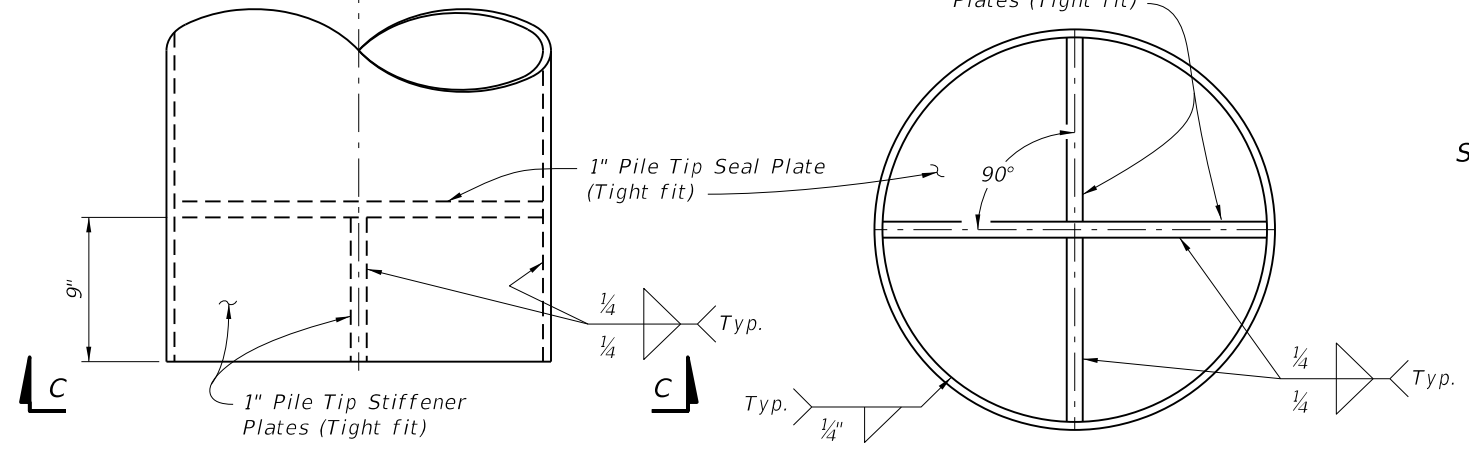
6/28/2012 1:17:35 PM rd9607h C:\projects\standards\structures\2013book\21630-1of3.dgn



PARTIAL VIEW A-A

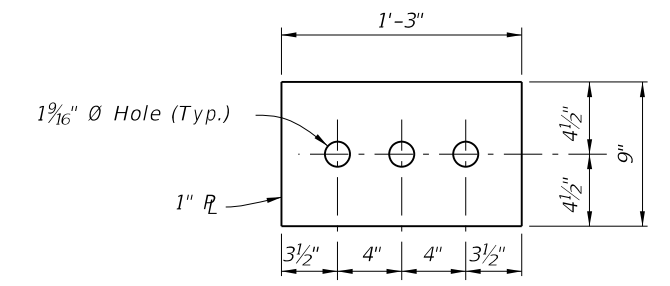


PLAN VIEW STEEL PILE CAP ASSEMBLY
(Bearing Plates and Bearing Keeper Bars not show for clarity)



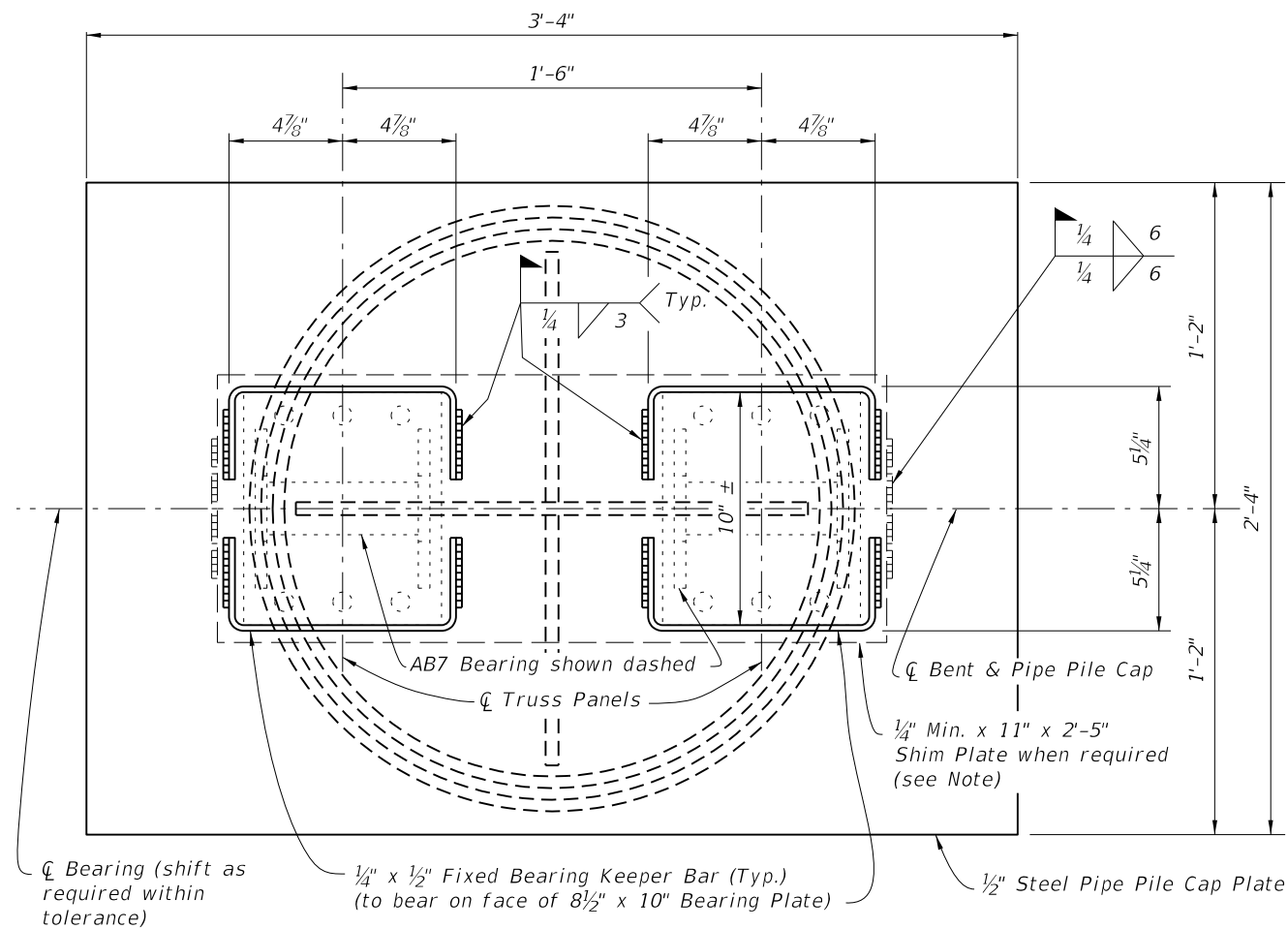
VIEW B-B

VIEW C-C
PILE TIP DETAIL

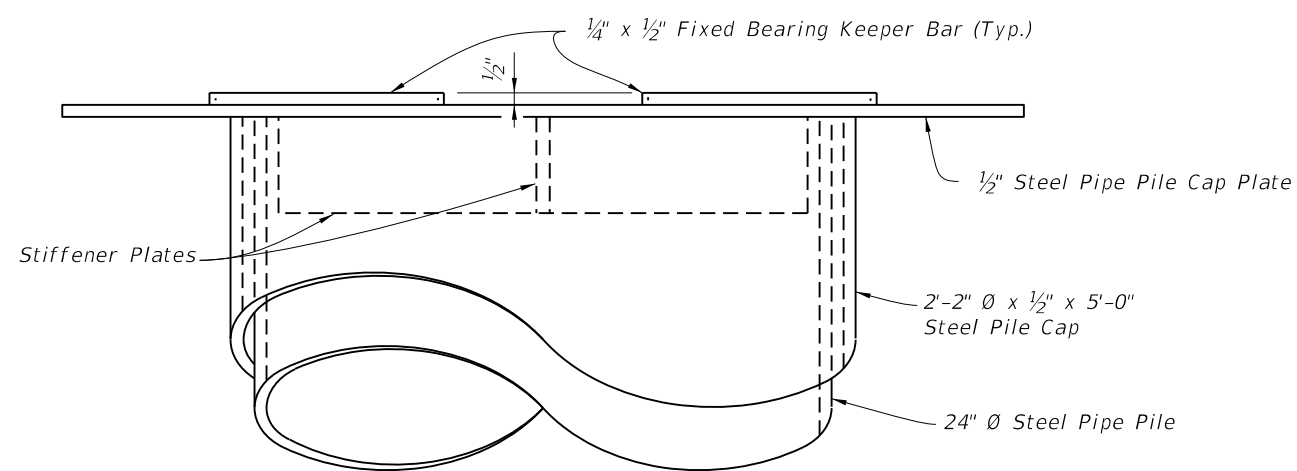


STRUT CONNECTOR PLATE DETAIL

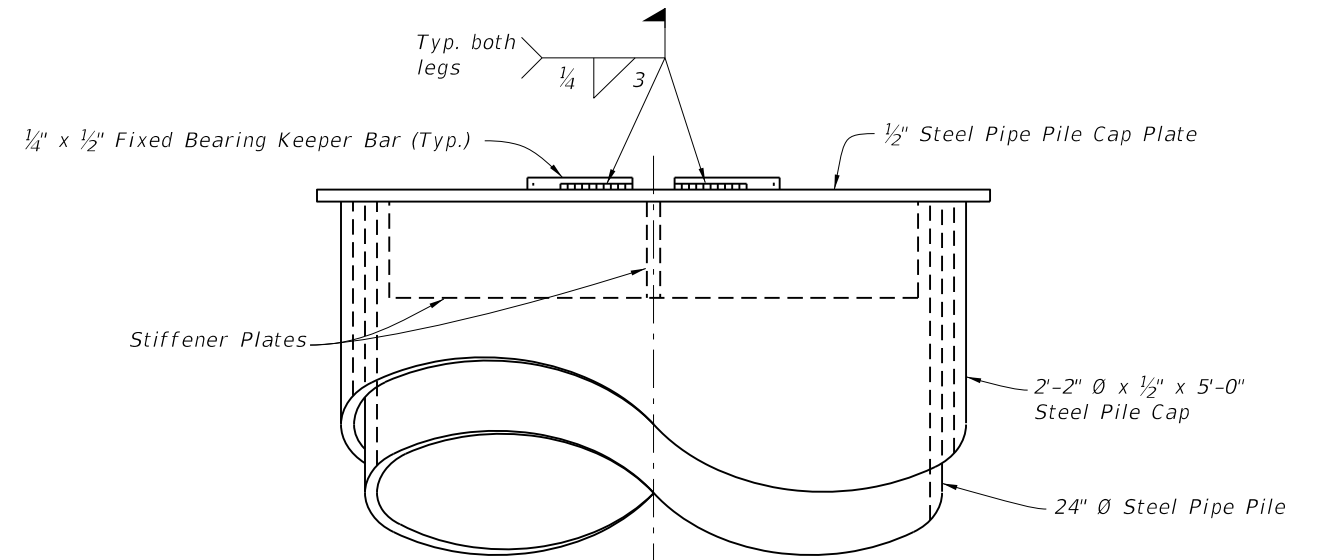
LAST REVISION	REVISION	DESCRIPTION:		FDOT DESIGN STANDARDS 2013	TEMPORARY DETOUR BRIDGE DETAILS - STEEL PIPE PILE FOUNDATIONS	INDEX NO.	SHEET NO.
07/01/06						21630	1



PARTIAL PLAN VIEW

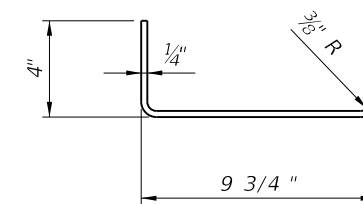


PARTIAL ELEVATION VIEW



END VIEW

Note:
Use Shim Plates as required to provide equal bearing seat elevations across the bent. Vary thickness of Shim Plate across the pile cap plate to provide a level bearing area in the transverse direction.



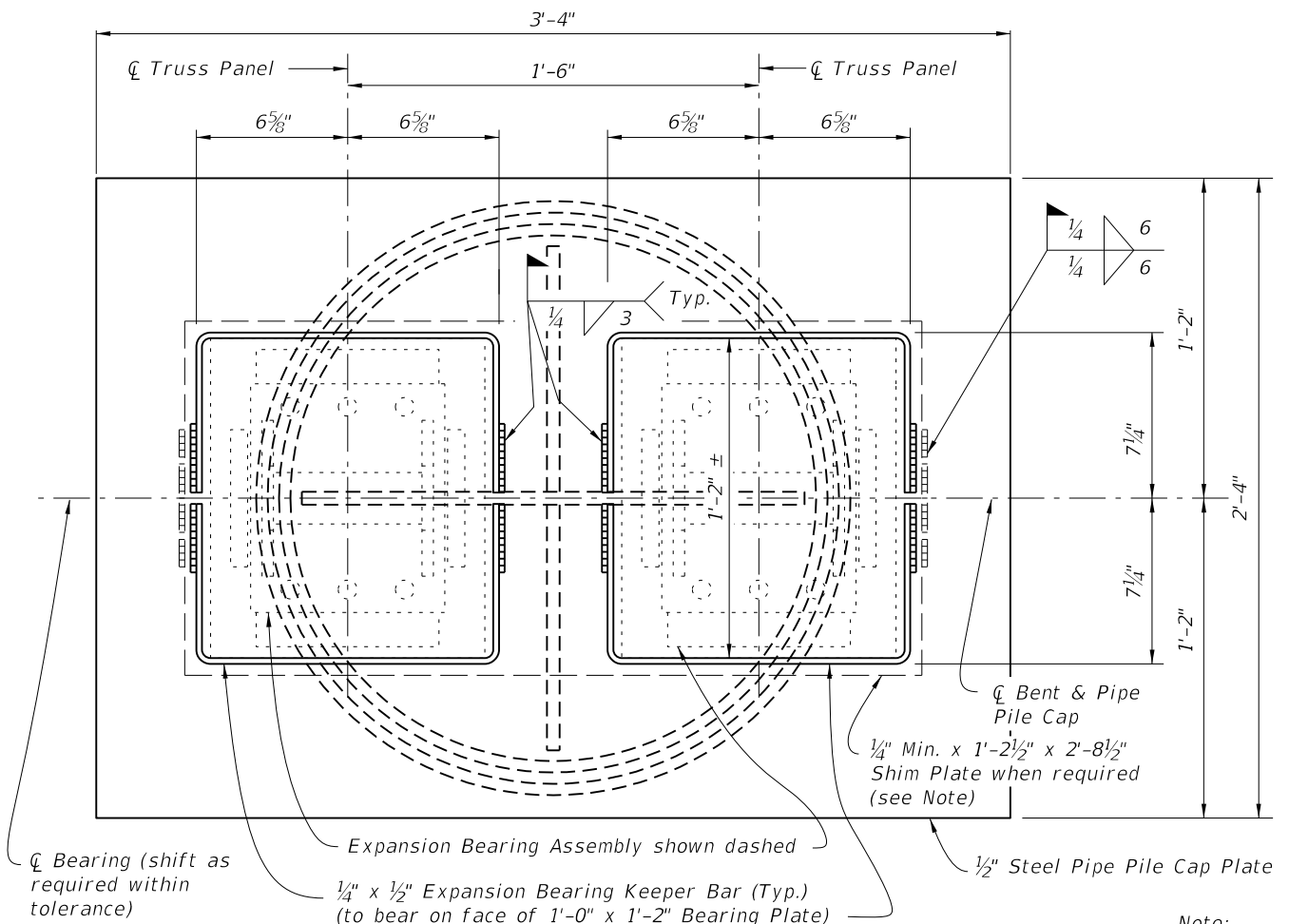
FIXED BEARING KEEPER BAR DETAIL

FIXED BEARING DETAILS

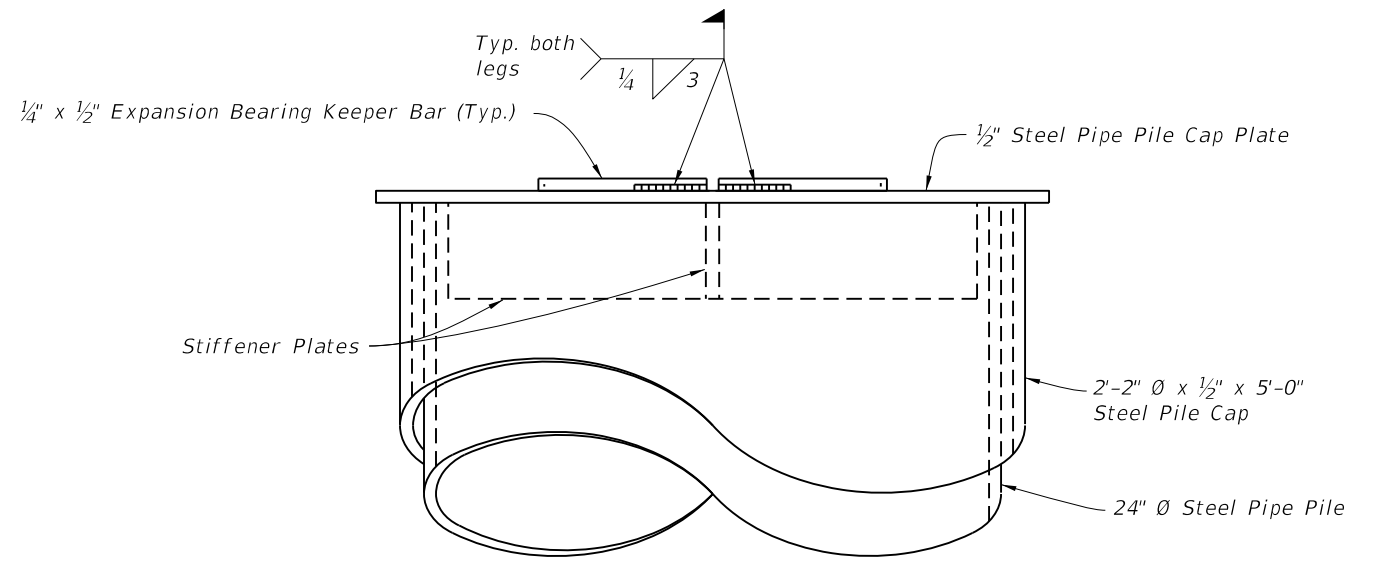
6/29/2012 1:17:37 PM rd960rh C:\projects\standards\structures\2013book\21630-2of3.dgn

LAST REVISION	DESCRIPTION:	 FDOT DESIGN STANDARDS 2013	TEMPORARY DETOUR BRIDGE DETAILS - STEEL PIPE PILE FOUNDATIONS	INDEX NO.	SHEET NO.
07/01/06				21630	2

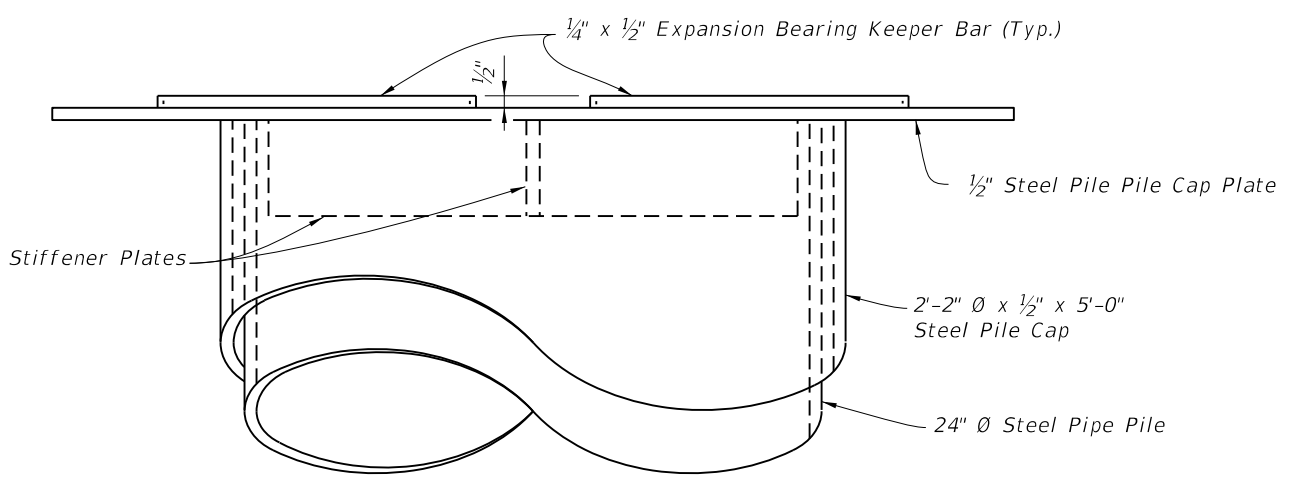
6/29/2012 1:17:40 PM rd960rh C:\projects\standards\structures\2013book\21630-3of3.dgn



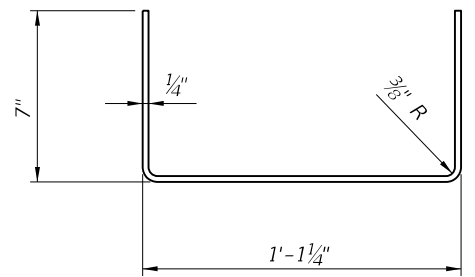
PARTIAL PLAN VIEW



END VIEW



PARTIAL ELEVATION VIEW



EXPANSION BEARING KEEPER BAR DETAIL

Note:
Use Shim Plates as required to provide equal bearing seat elevations across the bent. Vary thickness of Shim Plate across the pile cap plate to provide a level bearing area in the transverse direction.

ABUTMENT AND INTERMEDIATE EXPANSION BEARING DETAILS

LAST REVISION 07/01/06	DESCRIPTION:	 FDOT DESIGN STANDARDS 2013	TEMPORARY DETOUR BRIDGE DETAILS - STEEL PIPE PILE FOUNDATIONS	INDEX NO. 21630	SHEET NO. 3
---------------------------	--------------	--	---	--------------------	----------------