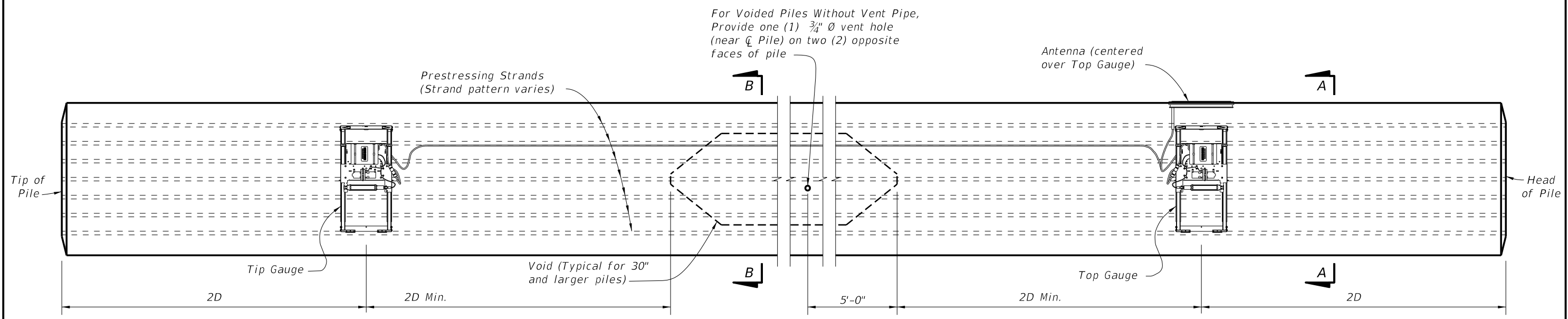
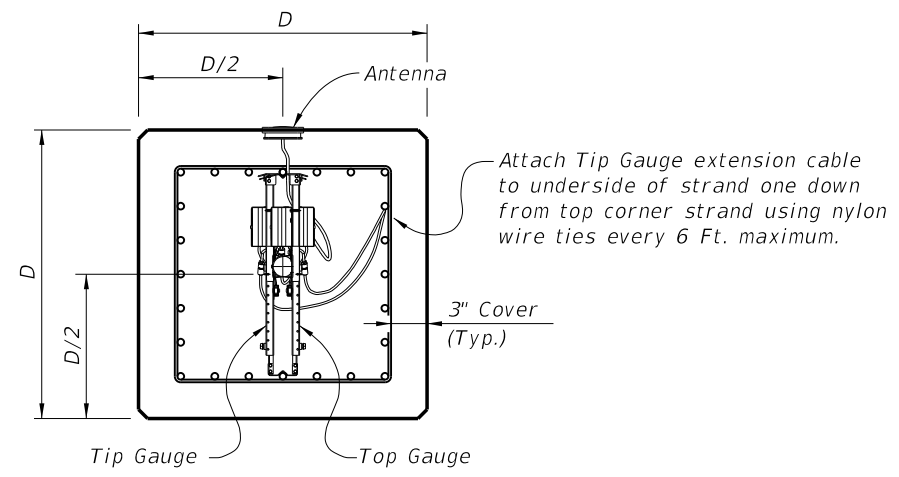


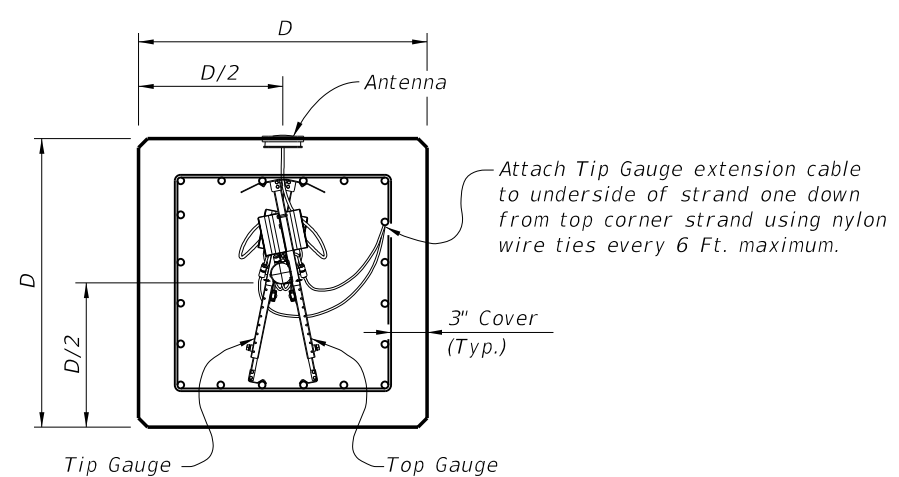
6/28/2012 12:59:17 PM rd9607h C:\projects\standards\structures\2013book\20602-1of1.dgn



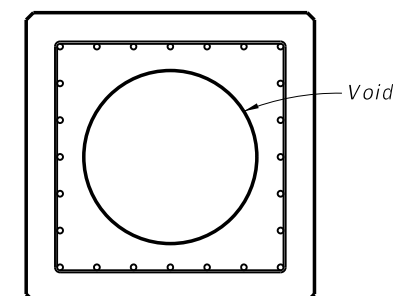
ELEVATION



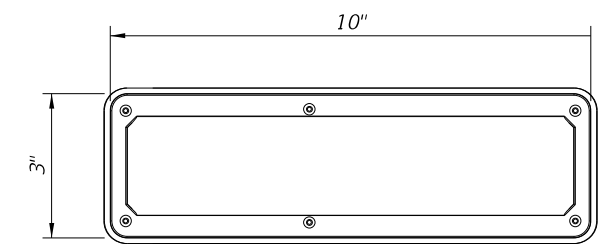
SECTION A-A
(Strand Pattern with odd number of strands per face)



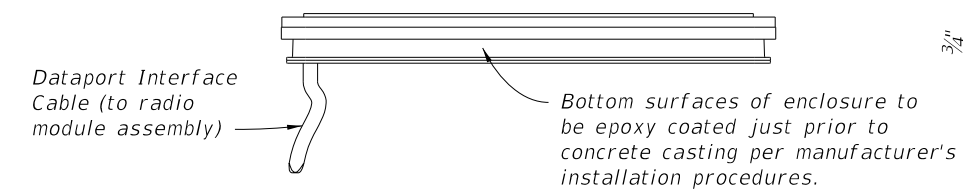
SECTION A-A
(Strand Pattern with even number of strands per face)



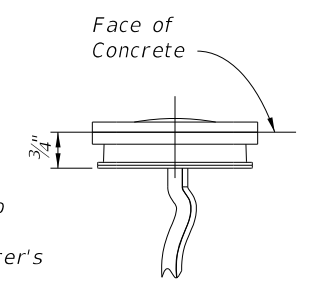
SECTION B-B
(Showing Voided Pile, Solid Pile Similar)



ANTENNA TOP VIEW



ANTENNA SIDE VIEW



ANTENNA END VIEW

NOTE:
Provide EDC Instrumentation in square prestressed concrete piles (18" and larger) in accordance with Specification Section 455 for bridge foundations.

LAST REVISION	REVISION	DESCRIPTION:	 FDOT DESIGN STANDARDS 2013	EDC INSTRUMENTATION FOR SQUARE PRESTRESSED CONCRETE PILES	INDEX NO.	SHEET NO.
07/01/12					20602	1