

VIEW A-A
(Shear key shown dashed)

NOTES

DESIGN SPECIFICATIONS:

Design according to FDOT Structures Manual (current edition).

MATERIALS:

All reinforcing steel shall conform to ASTM A615 Grade 60.

SURFACE FINISH:

A Class 5 Applied Finish Coating shall be applied to the top of the wall and the exposed face above ground line.

ARCHITECTURAL SURFACE TEXTURES:

Alternate Architectural Surface Textures may be substituted for the Striated Pattern shown when approved by the Engineer. Concrete required for Architectural Surface Textures is not included in the quantities.

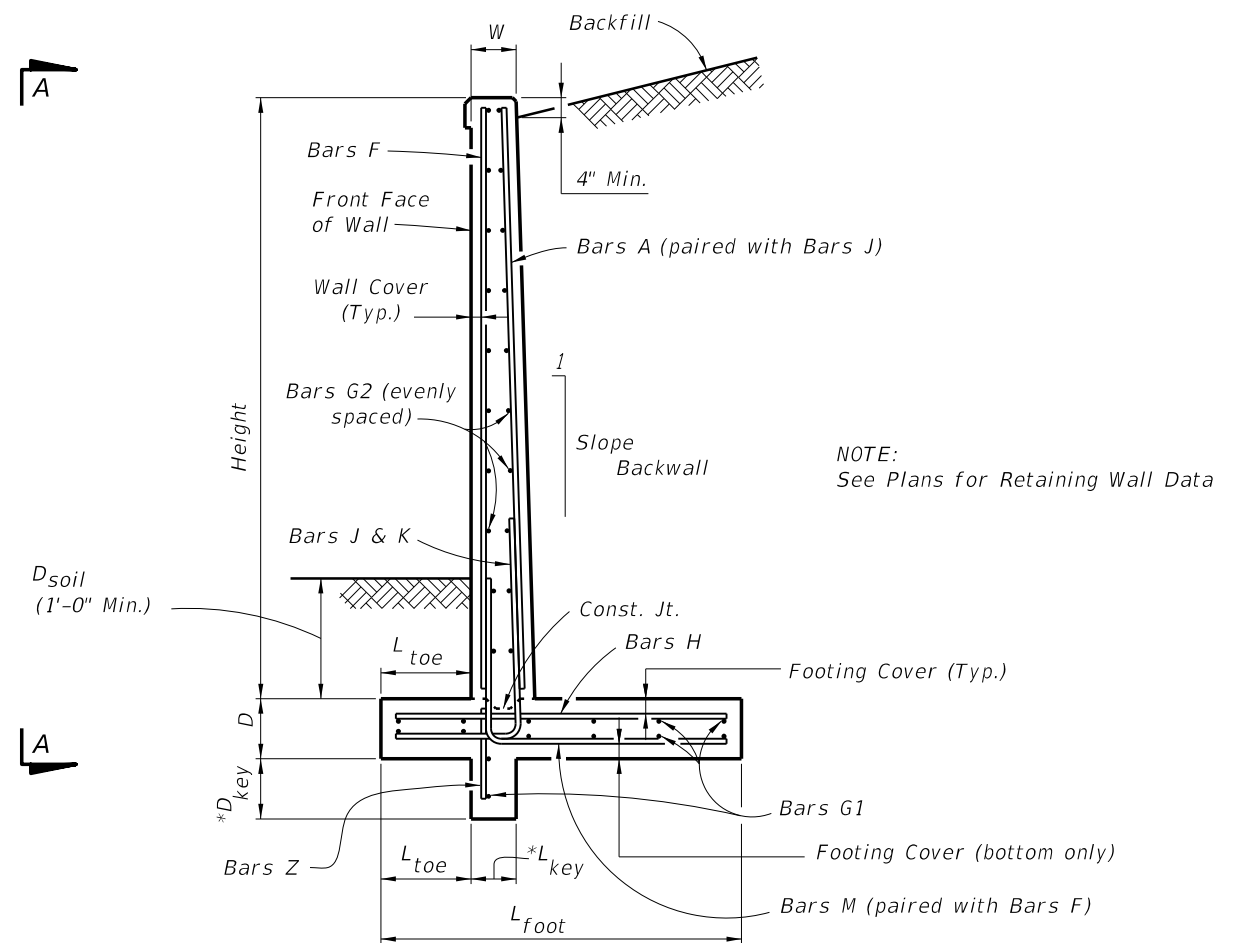
TRAFFIC RAILING BARRIER:

If there is a Traffic Railing Barrier on the wall, Wall Joints and Barrier V-Grooves shall align and Wall Expansion Joints and Barrier Open Joints shall align.

FOUNDATION: Prepare the soil below the footing in accordance with the requirements for spread footings in Specification Section 455.

PAYMENT:

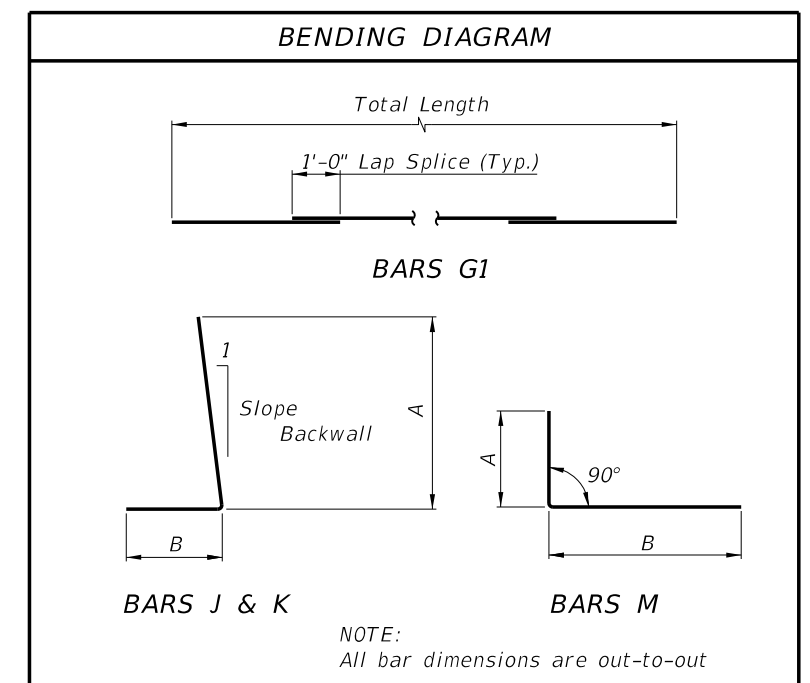
All Retaining Wall costs, including all miscellaneous costs, shall be paid for at the unit contract price for either Class II, III or IV Concrete (Retaining Walls) (CY) and Reinforcing Steel (Retaining Walls) (lbs.). Retaining Wall quantities shall not include concrete nor reinforcing steel for Traffic Railings/Junction Slab. Traffic Railing/Junction Slab shall be paid for under Concrete Traffic Railing Barrier with Junction Slab.



NOTE:
See Plans for Retaining Wall Data

* Shear Key is required only when specified by the Engineer

TYPICAL SECTION

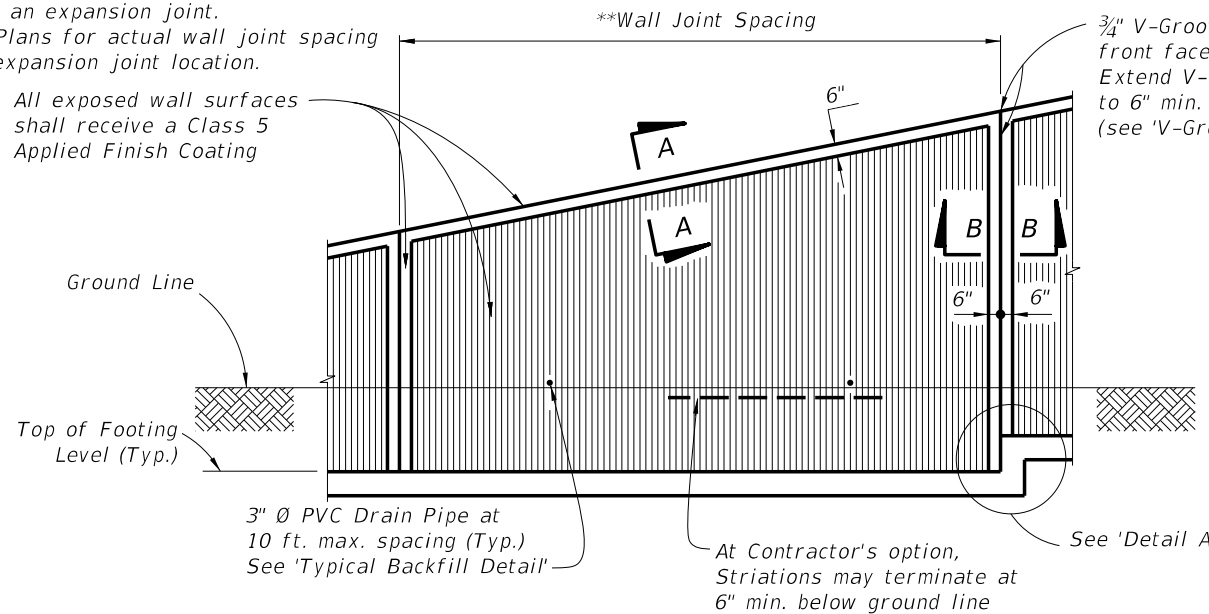


C:\projects\standards\structures\2013book\06010-1of2.dgn 6/29/2012 11:46:52 AM rd960rh

LAST REVISION	01/01/11	DESCRIPTION:	 FDOT DESIGN STANDARDS 2013	C-I-P CANTILEVER RETAINING WALL	INDEX NO.	SHEET NO.
					6010	1

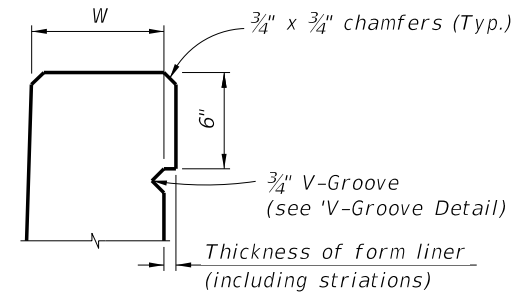
**Wall joint spacing 25 ft. maximum.
At minimum, every fourth wall joint to be an expansion joint.
See Plans for actual wall joint spacing and expansion joint location.

All exposed wall surfaces shall receive a Class 5 Applied Finish Coating



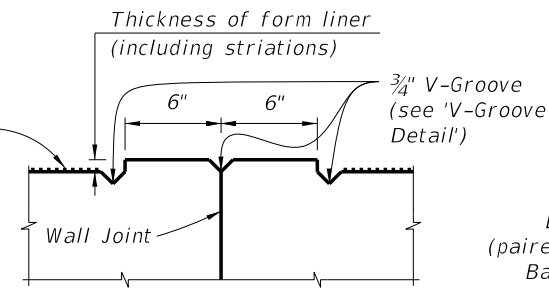
FRONT ELEVATION

3/4" V-Groove across top and down front face of wall at joint (Typ.). Extend V-Groove down back of wall to 6" min. below ground. (see 'V-Groove Detail')

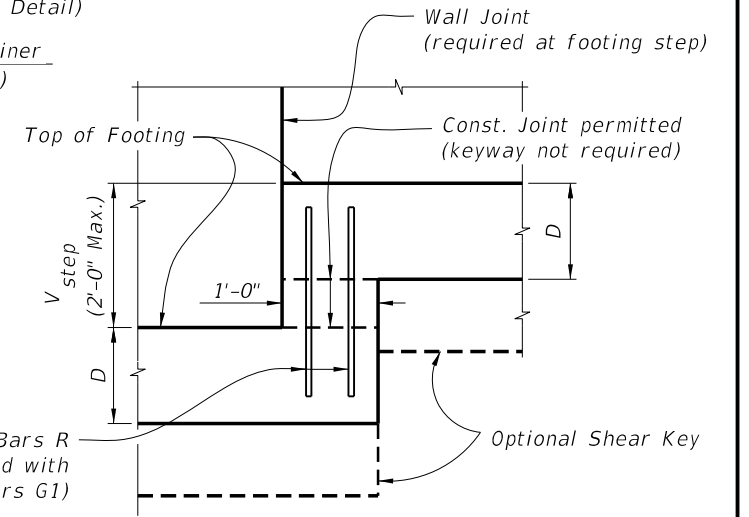


SECTION A-A

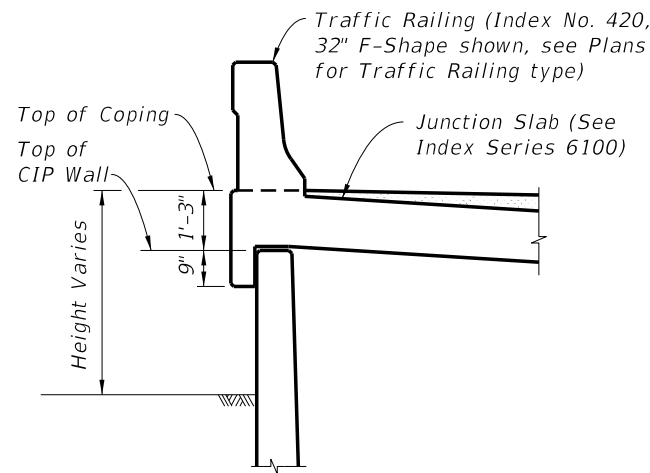
Striated Surface shall consist of uniform vertical grooves of 1/8" to 1/4" depth and spacing



SECTION B-B

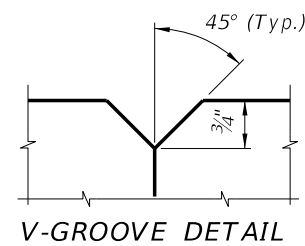


DETAIL A

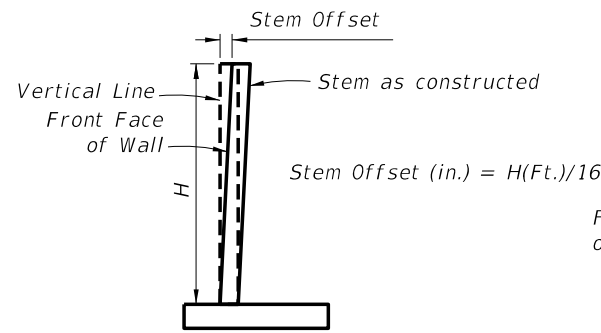


TRAFFIC RAILING/JUNCTION SLAB DETAIL

(32" F-Shape Shown, other Traffic Railings similar)
(for 32" F-Shape Traffic Railing (as shown), see Index No. 420;
for 32" Vertical Shape Traffic Railing, see Index No. 423;
for 42" Vertical Shape Traffic Railing, see Index No. 422)

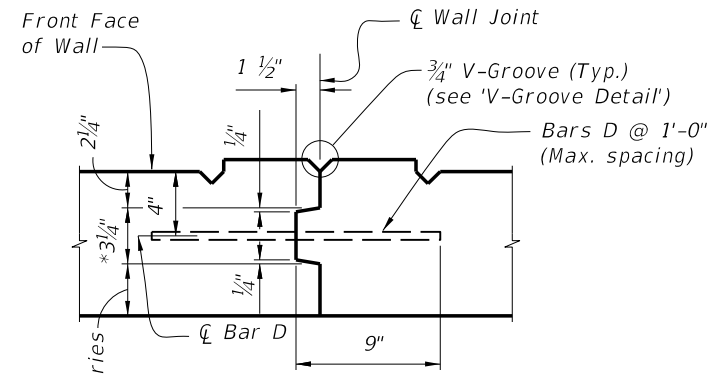


V-GROOVE DETAIL

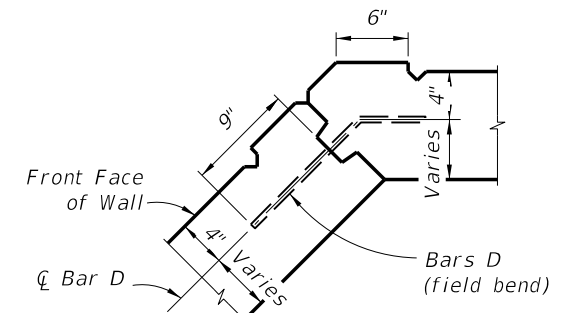


STEM OFFSET VALUES

(for H < 20 Ft.)

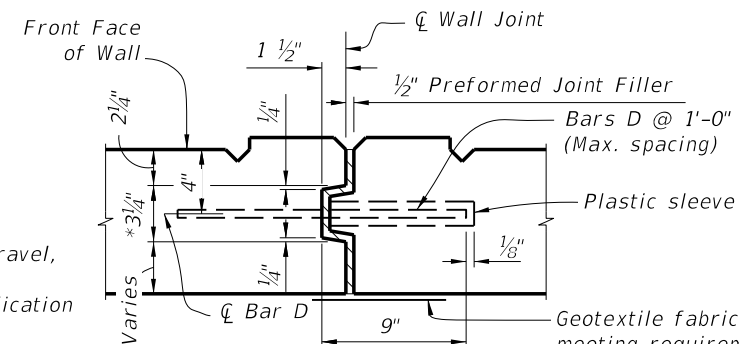


WALL JOINT DETAIL

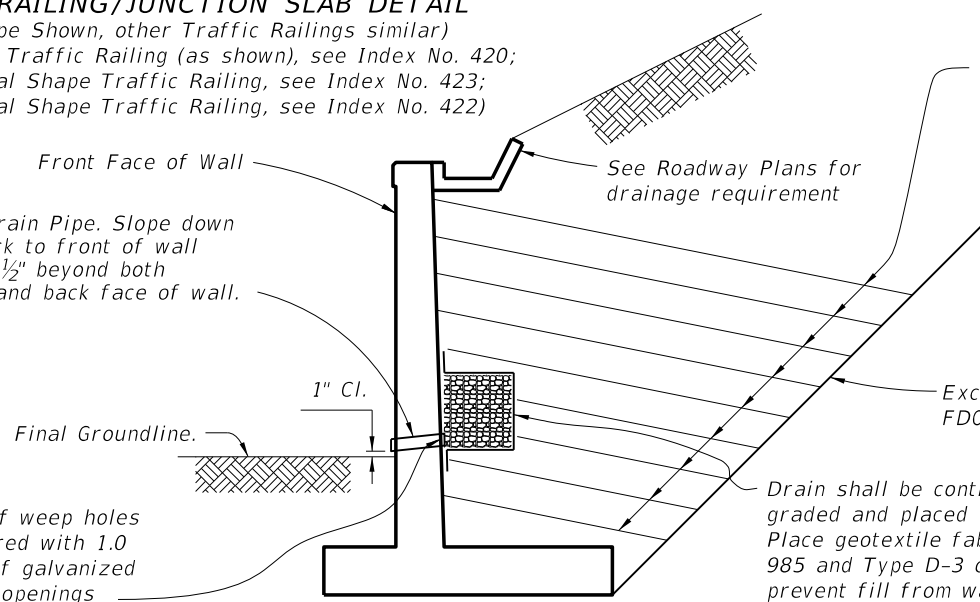


TYPICAL CORNER JOINT DETAIL

*Key to stop at top of footing and 6" from top of wall. Joint across footing and top of wall to be straight line.




EXPANSION JOINT DETAIL



TYPICAL BACKFILL DETAIL

C:\projects\standards\structures\2013book\06010-2of2.dgn rd960rh 11:46:54 AM 6/29/2012

LAST REVISION	DESCRIPTION:	 FDOT DESIGN STANDARDS 2013	C-I-P CANTILEVER RETAINING WALL	INDEX NO.	SHEET NO.
01/01/11				6010	2