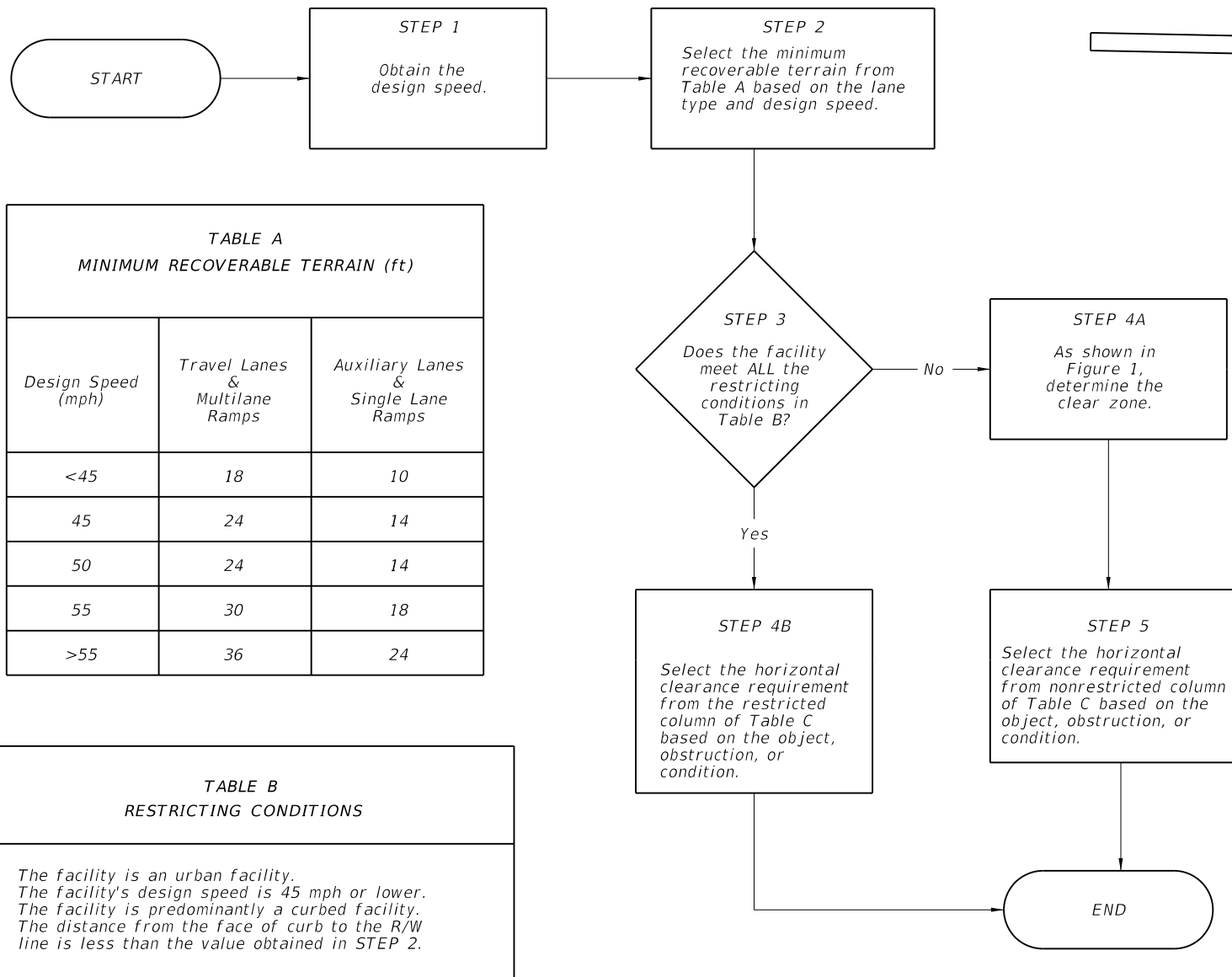


6/28/2012 11:03:24 AM C:\projects\standards\roadway\00700-s\00700-01.dgn rd960rh

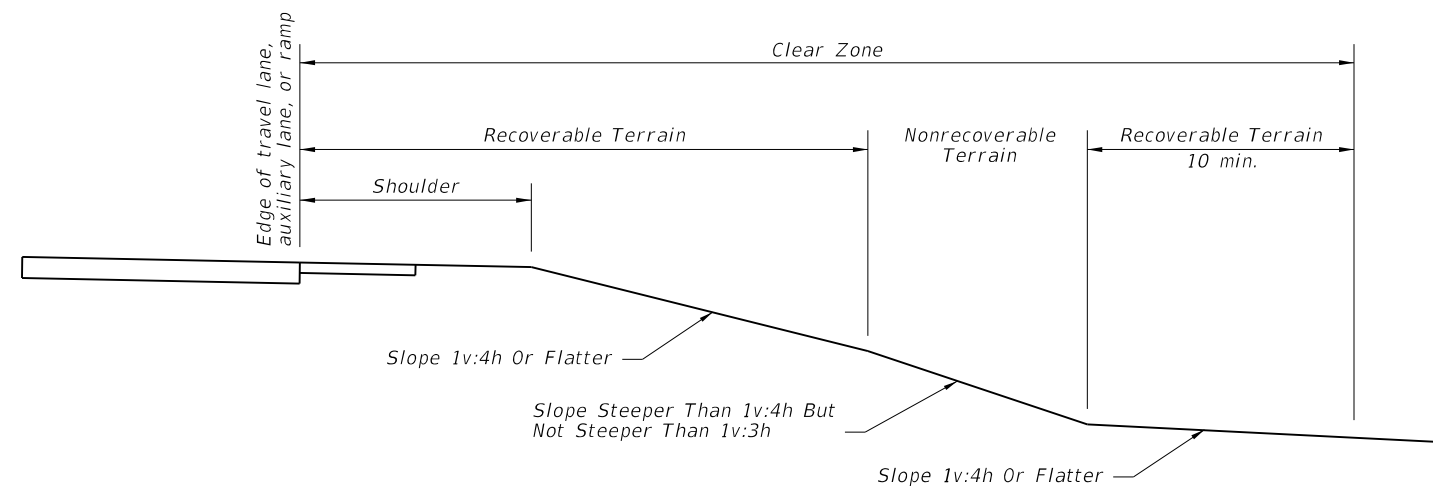


**TABLE A**  
MINIMUM RECOVERABLE TERRAIN (ft)

Design Speed (mph)	Travel Lanes & Multilane Ramps	Auxiliary Lanes & Single Lane Ramps
<45	18	10
45	24	14
50	24	14
55	30	18
>55	36	24

**TABLE B**  
RESTRICTING CONDITIONS

1. The facility is an urban facility.
2. The facility's design speed is 45 mph or lower.
3. The facility is predominantly a curbed facility.
4. The distance from the face of curb to the R/W line is less than the value obtained in STEP 2.



Clear Zone is the relatively flat unobstructed area that is to be provided for safe use by errant vehicles, and must be wide enough so that the sum of all the recoverable terrain within is equal to or greater than the value obtained in STEP 2. Recoverable terrain provided beyond nonrecoverable terrain must be a minimum of 10 feet. Areas beyond nontraversable and hazardous terrain cannot be used as recoverable or nonrecoverable terrain.

Roadside Terrain includes all surfaces along the roadway other than travel lanes, auxiliary lanes, and ramps. For the purpose of establishing clear zones and horizontal clearance requirements, roadside terrain is defined as recoverable, nonrecoverable, non-traversable, and hazardous as follows:

Recoverable when it is safely traversable and on a slope that is 1v:4h or flatter.

Nonrecoverable when it is safely traversable and on a slope that is steeper than 1v:4h but not steeper than 1v:3h.

Nontraversable when it is not safely traversable or on a slope that is steeper than 1v:3h.

Hazardous when a slope is steeper than 1v:3h and deeper than 6 feet as shown in Figure 2.

Horizontal Clearance Requirements are shown in Table C and are the required offsets to an object from a specified point on the roadway.

**ROADSIDE TERRAIN**  
**FIGURE 1**

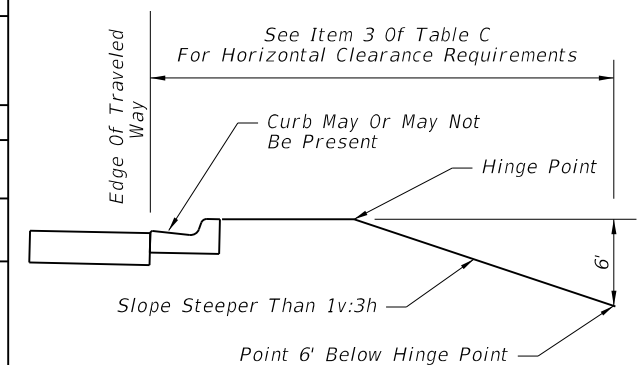
PROCESS FOR DETERMINING HORIZONTAL CLEARANCE REQUIREMENTS AND CLEAR ZONES

C:\projects\standards\roadway\00700-s\00700-02.dgn  
11:03:26 AM  
r0960rh  
6/29/2012

TABLE C					
Item No.	OBJECTS, OBSTRUCTIONS OR CONDITIONS	HORIZONTAL CLEARANCE REQUIREMENTS			
		Restricted	Nonrestricted		
GENERAL	1	Above ground fixed hazards: All roadside objects, obstructions or conditions other than those listed below that exceed 4 inches in height and pose a hazard to errant vehicles and vehicle occupants.	Locate as close to the Right Of Way as practical and not less than 4 feet from face of curb.	Locate outside the clear zone as close to the Right Of Way as practical.	
	2	All FDOT approved guardrails, crash cushions, permanent or temporary concrete barriers, and guardrail end terminals.	Locate as shown in the Design Standards.	Locate as shown in the Design Standards.	
	3	Drop-off hazards: Any point along a roadside slope steeper than 1v:3h that is deeper than 6 feet below the hinge point. See Figure 2.	Locate the point that is 6 feet below the hinge point no less than 22 feet from the traveled way.	Treat as roadside slopes in accordance with Design Standard 400.	
ROADWAY	4	Mailboxes not shown in Design Standard 532.	Not to be used.	Not to be used.	
	5	Mailboxes shown in Design Standard 532.	Locate in accordance with Design Standard 532.	Locate in accordance with Design Standard 532.	
	6	Trees expected to become greater than 4 inches in diameter measured 6 inches above the ground.	Outside roadways: Locate no less than 4 feet from face of curb in accordance with Design Standard 546. Inside medians: Locate no less than 6 feet from the edge of traffic lane and in accordance with Design Standard 546.	Locate outside the clear zone as close to the Right Of Way as practical and in accordance with Design Standard 546.	
	7	Trees not expected to become greater than 4 inches in diameter measured 6 inches above the ground.	Locate in accordance with Design Standard 546.	Locate in accordance with Design Standard 546.	
	8	Canals behind guardrail.	Locate no less than 5 feet from the back of the guardrail post.	Locate no less than 5 feet from the back of the guardrail post.	
	9	Canals without guardrail.	Locate as close to the Right Of Way as practical and not less than 40 feet from the traveled way.	Design speeds of 50 mph and greater: Locate as close to the Right Of Way as practical and not less than 60 feet from the traveled way. Design speeds less than 50 mph: Locate as close to the Right Of Way as practical and not less than 50 feet from the traveled way.	
	DRAINAGE	10	Culvert wing wall, endwall, retaining walls and flared end sections less than 6 feet deep.	Locate no less than 4 feet from face of curb.	Locate outside the clear zone.
		11	Culvert wing wall, endwall, retaining walls and flared end sections 6 feet and greater in depth.	Treat as drop-off hazard; See Item No. 3.	Treat as drop-off hazard; See Item No. 3.
		12	Mitered end sections.	Locate as shown in Design Standards 272 and 273.	Locate as shown in Design Standards.
TRAFFIC CONTROL DEVICES	13	Frangible sign supports.	Locate no less than 4 feet from face of curb and in accordance with Design Standard 17302.	Locate in accordance with Design Standard 17302.	
	14	Overhead sign supports and other nonfrangible signs.	Locate no less than 4 feet from face of curb.	Locate outside the clear zone.	
	15	Signal controller cabinets, signal poles, strain poles and mast arms.	Locate no less than 4 feet from face of curb and not in medians.	Locate outside the clear zone and not in medians.	
LIGHTING	16	Conventional lighting (frangible and nonfrangible).	Locate no less than 4 feet from face of curb and not in medians.	Locate 20 feet from travel lanes or 14 feet from auxiliary lanes. Not in medians. May be clear zone width when the clear zone is less than 20 feet.	
	17	Highmast lighting.	Not applicable.	Locate outside the clear zone.	
STRUCT.	18	Bridge piers and abutments: Above ground vertical structures.	Locate not less than 16 feet from edge of travel lane.	Locate outside the clear zone.	
UTILITIES	19	Fire hydrants with bases no higher than 4 inches above the ground.	Locate not less than 2 feet from face of curb.	Locate as close to the Right Of Way as practical.	
	20	Utility installations: All above ground fixed objects.	Locate as close to the Right Of Way as practical and not less than 4 feet from face of curb and not in medians.	Locate outside the clear zone as close to the Right Of Way as practical and not in medians and not within limited access facilities. May be placed 4 feet behind the back of shields that have been justified for other reasons.	
RAILROADS	21	Railroad crossing traffic control devices.	Locate in accordance with Design Standard 17882.	Locate in accordance with Design Standard 17882.	

**GENERAL NOTES**

- When shielding an object and sidewalks are present, an unobstructed sidewalk width of at least 4 feet must be provided.
- When site specific conditions prohibit meeting the horizontal clearance requirements in TABLE C, the object, obstruction or condition must be mitigated, possibly by shielding. Otherwise, the Plans Preparation Manual, Volume 1, Chapters 2, 4, 21 and 25, or the Utility Accommodation Manual must be researched to determine viable alternatives. The minimum requirements in these manuals can only be reduced when a Design Variation or Design Exception has been approved in accordance with Chapter 23 of the Plans Preparation Manual, Volume 1 or a Utility Exception has been approved in accordance with the Utility Accommodation Manual.



**DROP-OFF HAZARDS**  
**FIGURE 2**