

**GENERAL NOTES:**

*This Standard is only applicable to the current FDOT inventory of temporary bridge components which are manufactured in accordance with Acrow Series 300, Double Wide design. See the associated Instructions for Design Standards (IDS) for more information.*

*Work this Standard with Index Nos. 21610, 21620 and 21630.*

**STRUCTURAL STEEL:**

*Steel Plates and Rolled Sections shall be ASTM A 709 Grade 36.  
Pipe piles shall be ASTM A 252 Grade 2, Fy = 35 ksi.*

**BOLTS, LAG SCREWS AND THREADED BOLT STOCK:**

*Furnish high strength bolts in accordance with ASTM A325. Furnish Threaded Stock in accordance with ASTM A36. Furnish Lag Screws in accordance with ASTM A307. Furnish steel washers and nuts compatible with Bolts, Threaded Stock and Lag Screws.*

**TIMBER AND LAGGING:**

*Timber and Lagging shall be No. 1 Southern Yellow Pine.*

**BACKWALL BENT PILES:**

*Timber Piles:  
10' Minimum Embedment into compacted backfill or into soil having a blow count greater than 6 (N>6).  
Ultimate Capacity greater than 18 tons.  
Splices are not allowed on any timber piles.*

**H-Piles:**

*12' Minimum Embedment into compacted backfill or into soil having a blow count greater than 6 (N>6).  
Ultimate Capacity greater than 18 tons.*

*Shims admissible between backwall pile and cap.  
Test piles are not required for backwall piles.*

**EXPANSION BEARINGS:**

*Inspect the PTFE (Teflon) layer and stainless steel plate prior to installation.  
Do not use bearings that have a severely damaged or unbonded PTFE layer.  
Clean PTFE of all grit and grime prior to installation.  
Clean Stainless steel plate of all grit and grime prior to installation and finish to a smooth buffed surface.*

**DISTRIBUTING BEAMS:**

*Longitudinal stops restraining the distributing beams may be lengthened or shortened to center the distributing beam bearing on the cap beam.  
The longitudinal stops are to bear on the distributing beam end frame.*

**EXPANSION JOINT SETTINGS:**

*Install the expansion joint considering the total continuous bridge length, location of fixed bearings and ambient temperature at the time of installation, assume a 1" expansion joint opening at 70 degrees F.*

**STORAGE FACILITY:**

*Contact  
FDOT Statewide Aluminum Shop  
2590 Camp Rd.  
Oviedo, Fl.  
407-977-6520*

*For shipping weights and dimensions of Temporary Bridge elements.*

**SHIPPING WEIGHTS AND DIMENSIONS:**

**Decking Sizes:**

Type	Length	Width	Weight (lbs.)
Curb	5'	6'-9"	800
Curb	10'	6'-9"	1420
Curb	15'	6'-9"	2200
Curb	20'	6'-9"	2800
NonCurb	5'	5'-3"	650
NonCurb	10'	5'-3"	1000
NonCurb	15'	5'-3"	1600
NonCurb	20'	5'-3"	2100

*Shipping weights and dimensions of other bridge components can be referenced in "Acrow Panel Bridging, Series 300, Technical Handbook".*

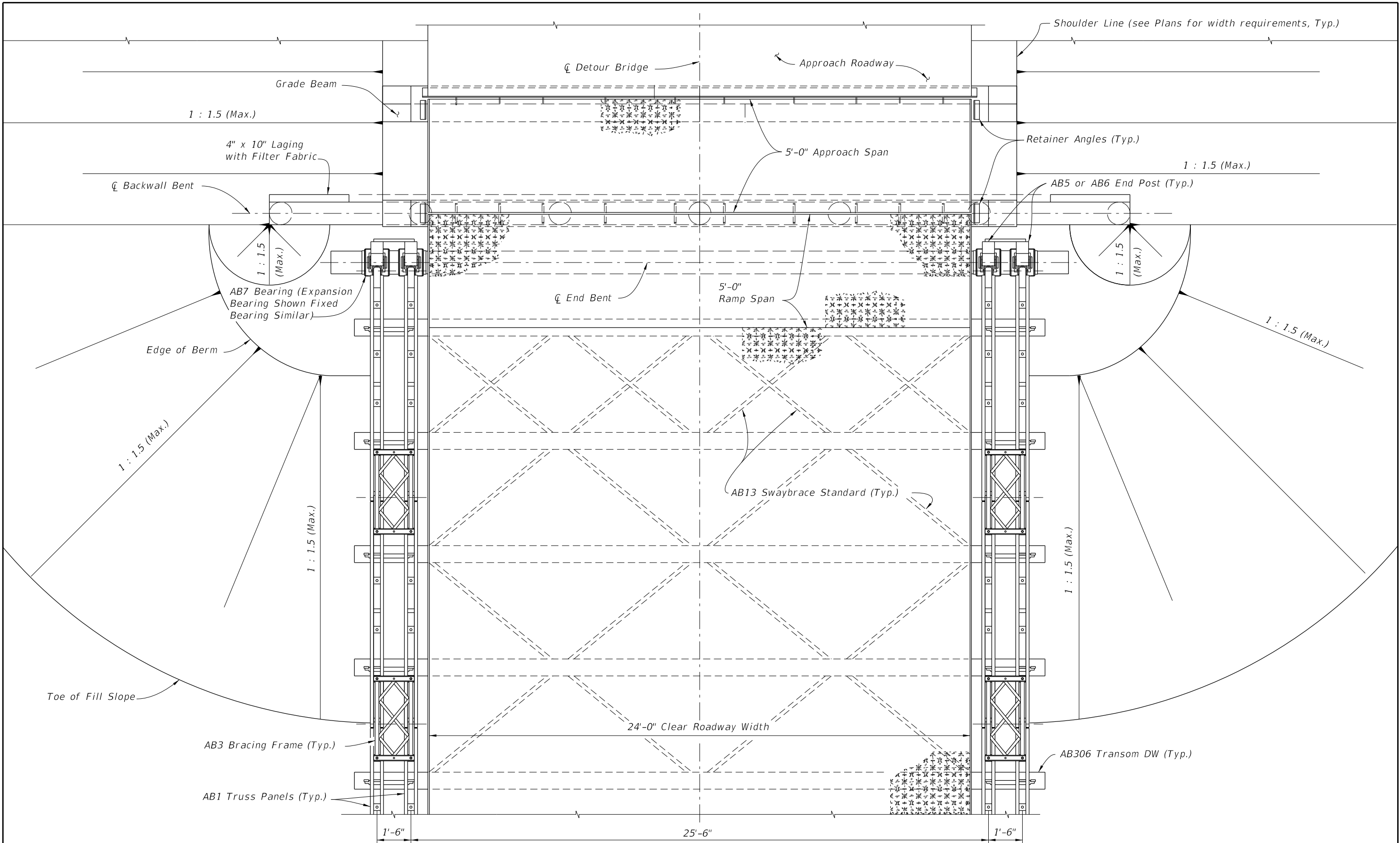
**PAYMENT:**

*Temporary Detour Bridge is to be paid for under Contract Unit Price for Special Detour. If a temporary bridge system other than that shown herein is used, the Contractor is responsible for renting or purchasing their own system.*


C:\projects\standards\structures\current\ready\4release\2012book\_draft\21600-1of7.dgn 12/30/2011 8:15:24 AM rd960rh

LAST REVISION	01/01/11	DESCRIPTION:	 <b>FDOT DESIGN STANDARDS FY 2012/2013</b>	<b>TEMPORARY DETOUR BRIDGE GENERAL NOTES AND DETAILS</b>	INDEX NO.	SHEET NO.
					21600	1

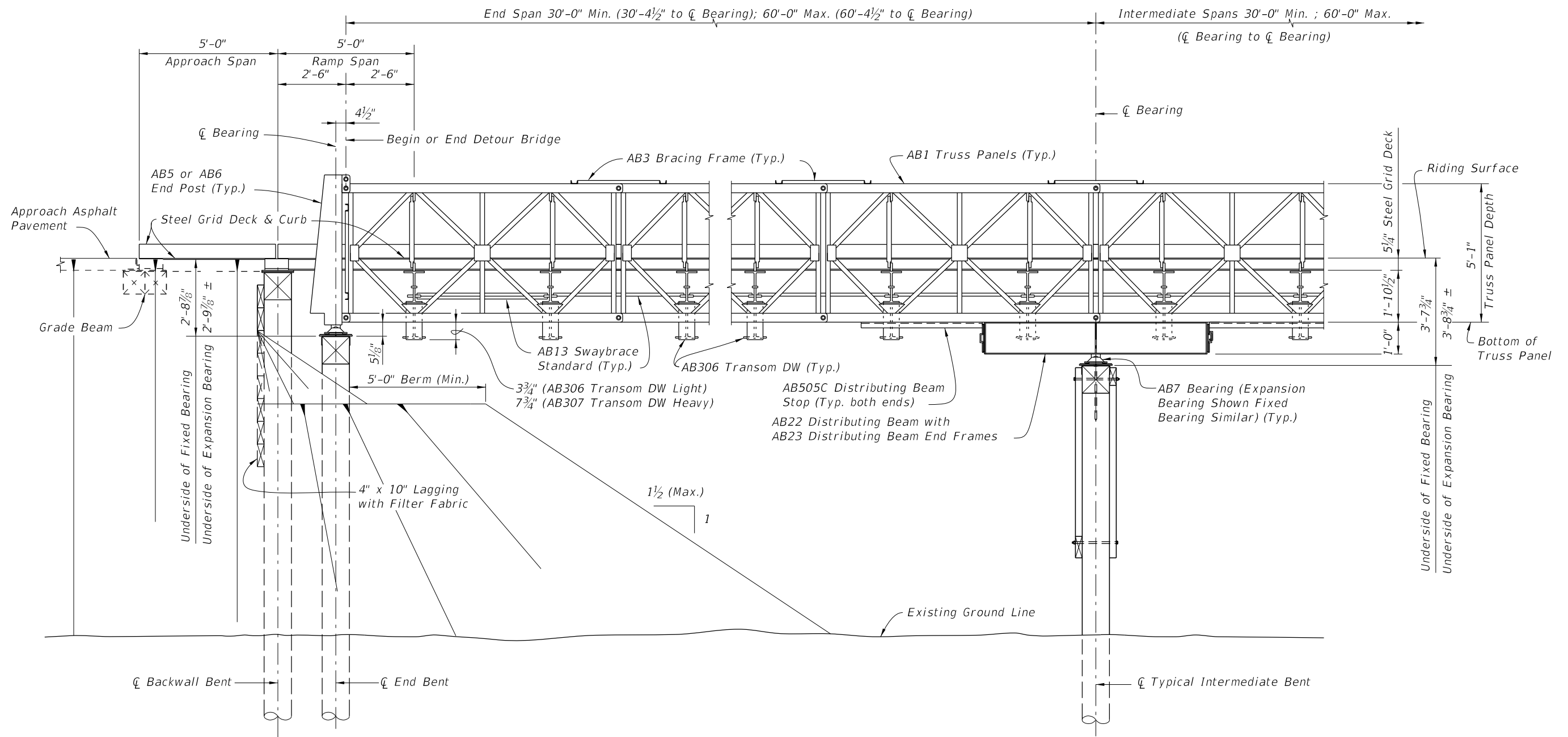
C:\projects\standards\structures\current\ready\4release\2012book\_draft\21600-2of7.dgn  
 8:15:27 AM  
 rd960/h  
 12/30/2011



TYPICAL PLAN VIEW OF DETOUR BRIDGE  
 (TIMBER PILE SHOWN, STEEL H PILES AND STEEL PIPE PILES SIMILAR)

LAST REVISION	REVISION	DESCRIPTION:	 <b>FDOT DESIGN STANDARDS</b> FY 2012/2013	<b>TEMPORARY DETOUR BRIDGE</b> <b>GENERAL NOTES AND DETAILS</b>	INDEX NO.	SHEET NO.
07/01/06					21600	2

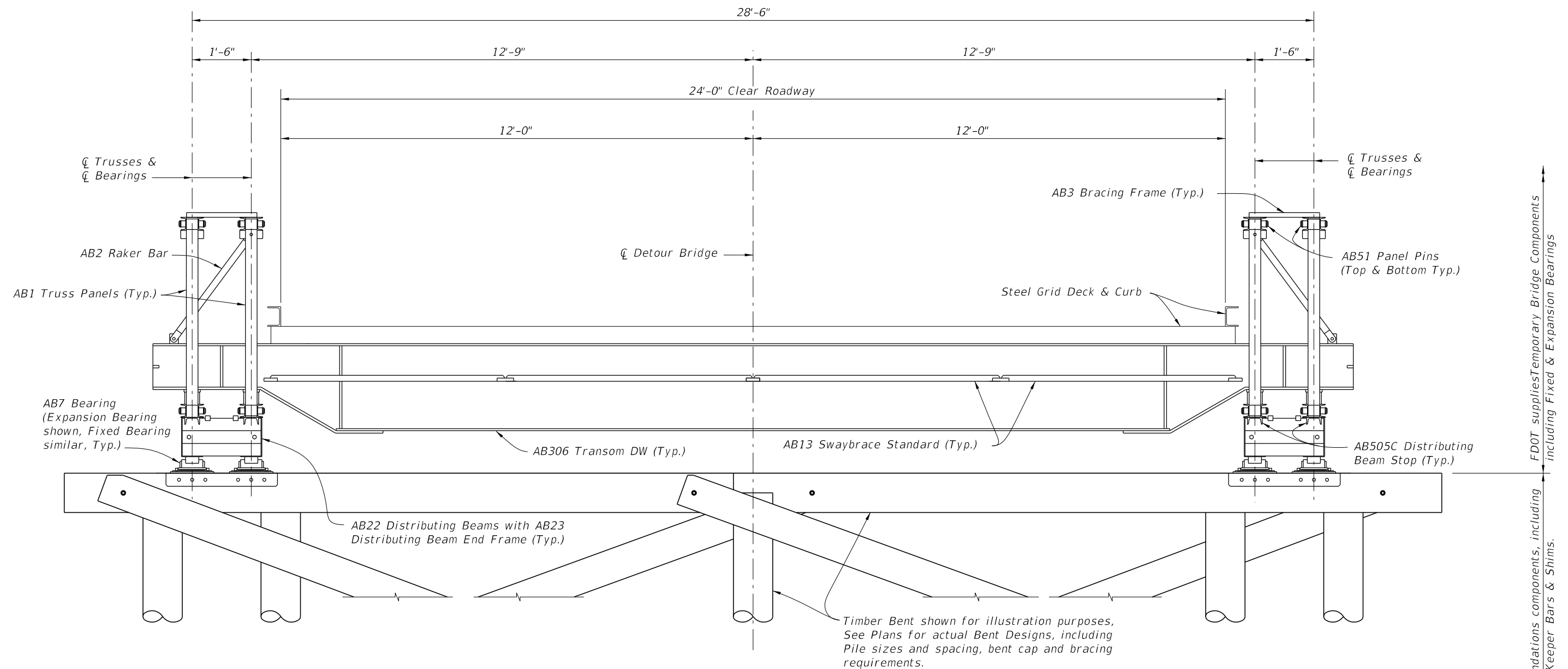
12/30/2011 8:15:28 AM rd960rh C:\projects\standards\structures\current\read\4\release\2012book\_draft\21600-3of7.dgn



**ELEVATION VIEW**  
 (TIMBER PILES SHOWN, STEEL H PILES AND STEEL PIPE PILES SIMILAR)

LAST REVISION <b>01/01/08</b>	REVISION	DESCRIPTION:		<b>FDOT DESIGN STANDARDS</b> <b>FY 2012/2013</b>	<b>TEMPORARY DETOUR BRIDGE</b> <b>GENERAL NOTES AND DETAILS</b>	INDEX NO. <b>21600</b>	SHEET NO. <b>3</b>
----------------------------------	----------	--------------	--	---	--	---------------------------	-----------------------

12/30/2011 8:15:29 AM rd960/h C:\projects\standards\structures\current\ready\4\release\2012\book\_draft\21600-4of7.dgn

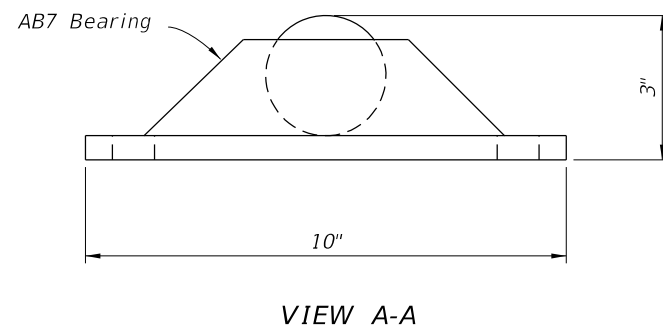
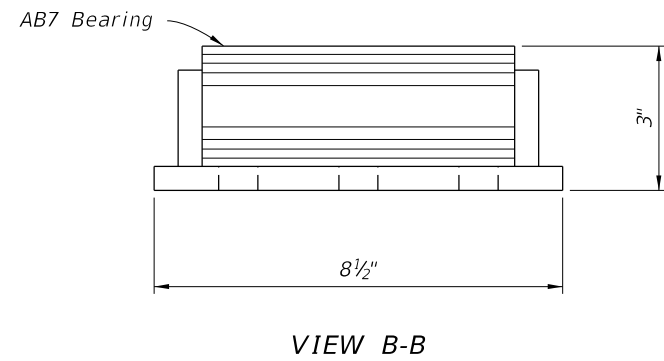
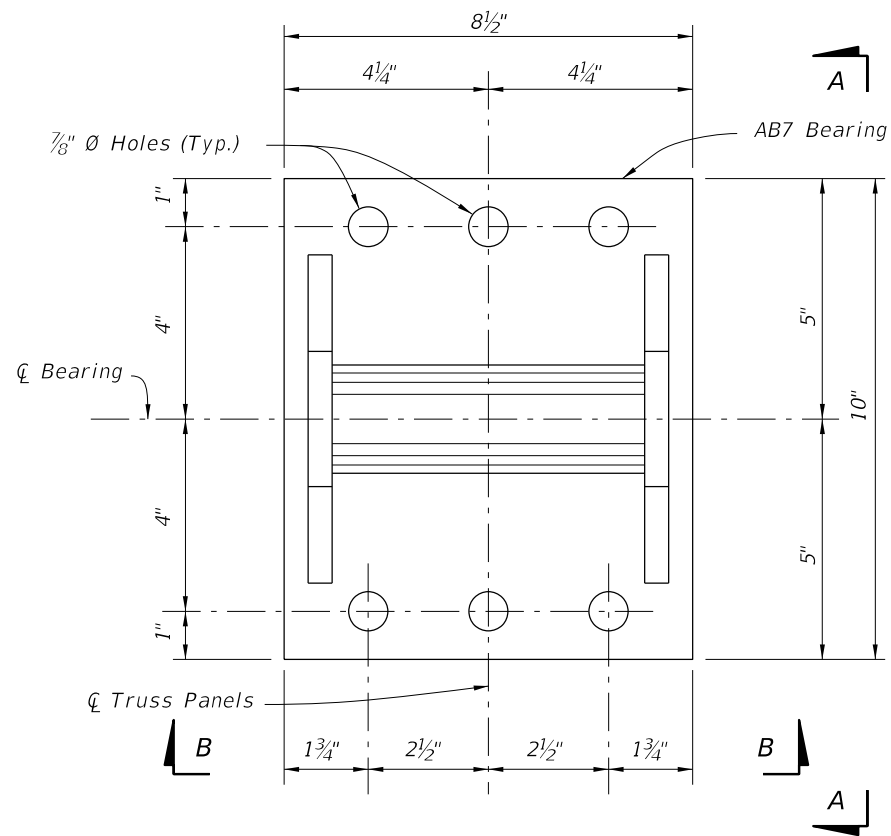


TYPICAL SECTION THRU DETOUR BRIDGE AT INTERIOR BENTS (TYPICAL SECTION AT END BENTS SIMILAR WITHOUT DISTRIBUTING BEAMS)  
(TIMBER PILE SHOWN, STEEL H PILES AND STEEL PIPE PILE SIMILAR)

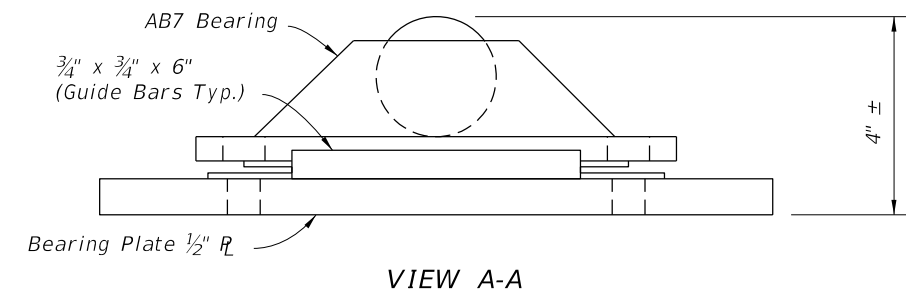
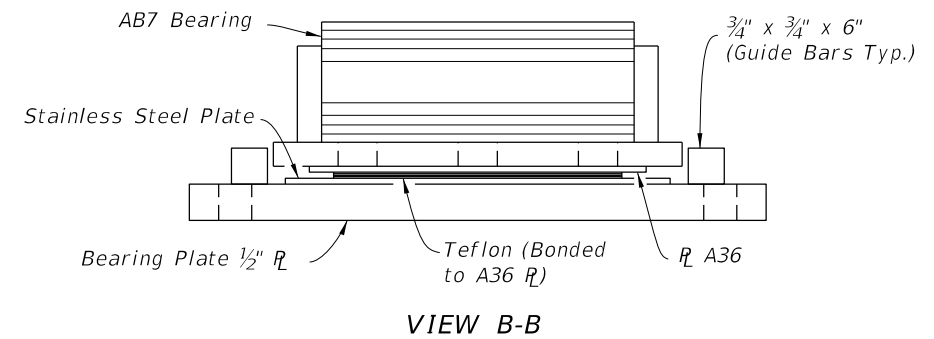
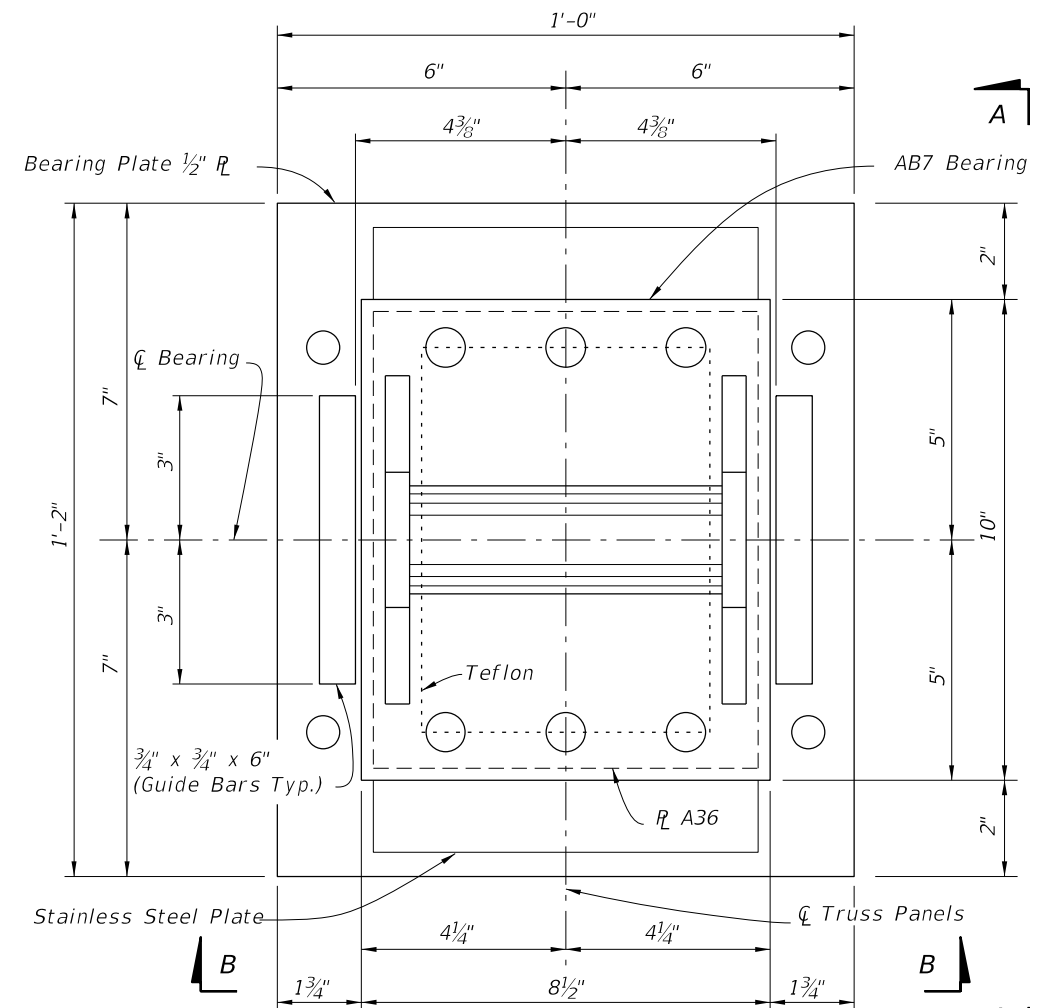
Contractor supplied foundations components, including Bearing Saddle Plates, Keeper Bars & Shims.  
FDOT supplies Temporary Bridge Components including Fixed & Expansion Bearings

LAST REVISION	REVISION	DESCRIPTION:	 <b>FDOT DESIGN STANDARDS</b> FY 2012/2013	<b>TEMPORARY DETOUR BRIDGE</b> GENERAL NOTES AND DETAILS	INDEX NO.	SHEET NO.
07/01/06					21600	4


12/30/2011 8:15:30 AM rd960rh C:\projects\standards\structures\current\ready\4release\2012book\_draft\21600-5of7.dgn



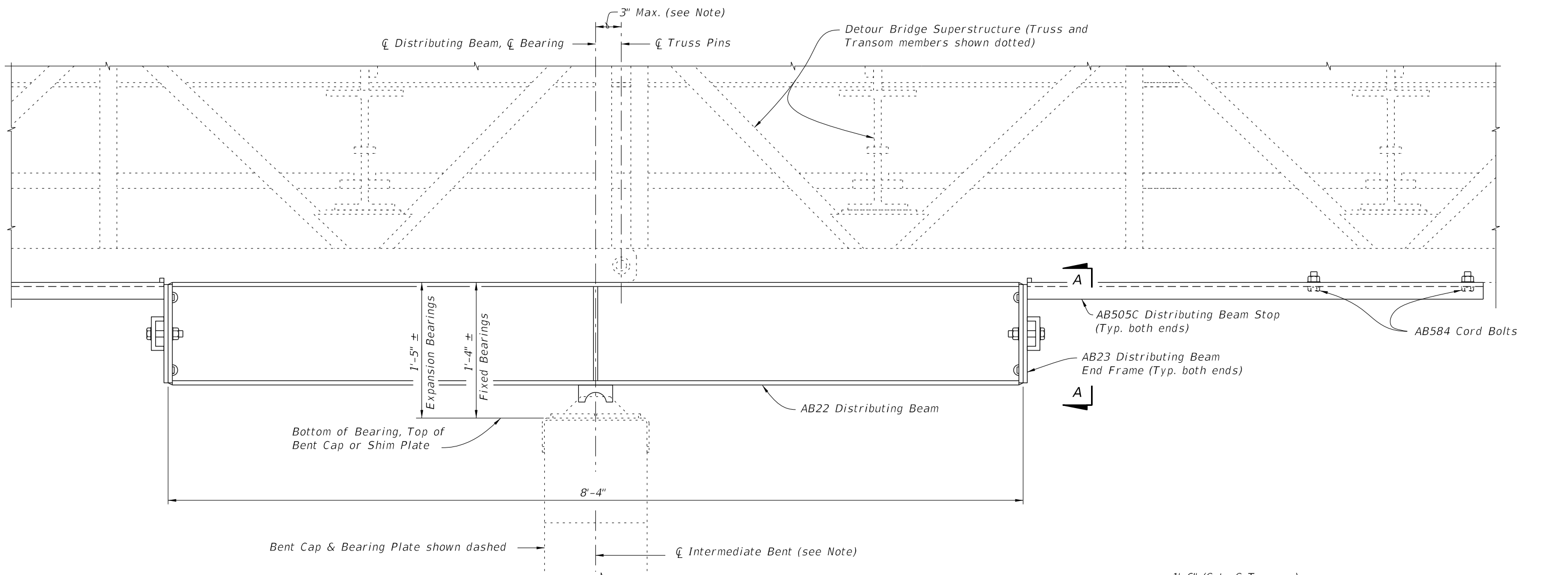
== DETAILS FOR FDOT SUPPLIED FIXED BEARINGS ==



== DETAILS FOR FDOT SUPPLIED EXPANSION BEARINGS ==

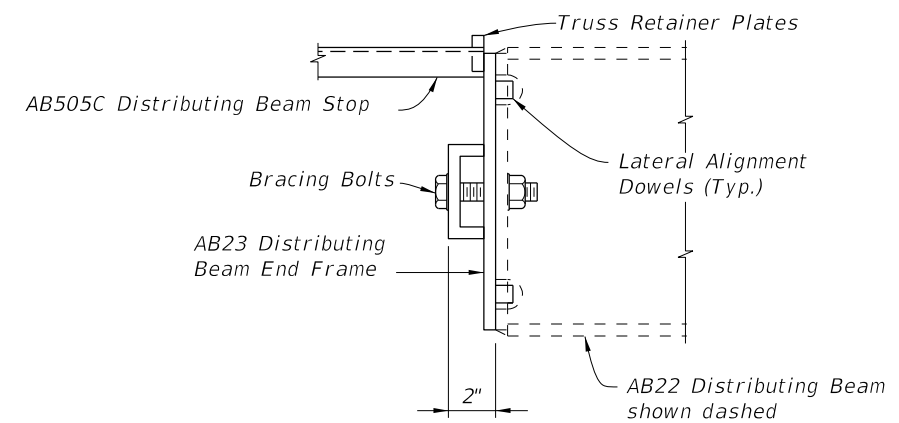
LAST REVISION	DESCRIPTION:	 <b>FDOT DESIGN STANDARDS</b> FY 2012/2013	<b>TEMPORARY DETOUR BRIDGE</b> <b>GENERAL NOTES AND DETAILS</b>	INDEX NO.	SHEET NO.
01/01/10				21600	5

12/30/2011 8:15:31 AM rd960rh C:\projects\standards\structures\current\ready\4release\2012book\_draft\21600-6of7.dgn

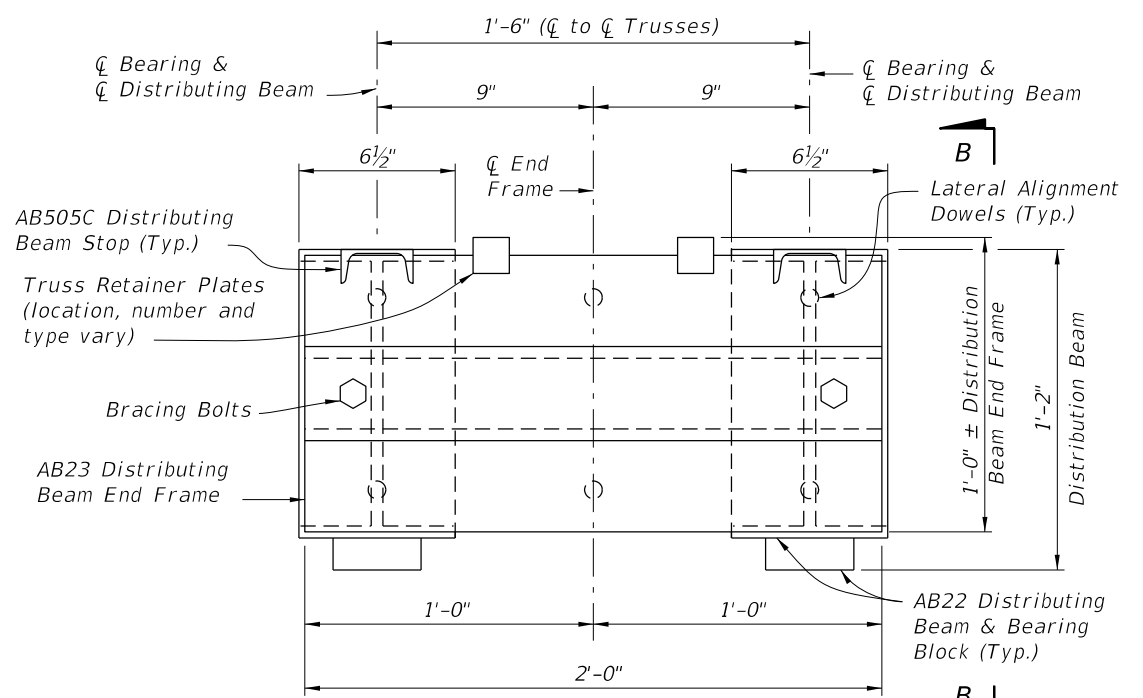


**ELEVATION VIEW OF DISTRIBUTING BEAM  
 (FIXED BEARING SHOWN, EXPANSION BEARING SIMILAR)  
 (Timber Intermediate Bent shown, Steel H Pile and  
 Steel Pipe Pile Intermediate Bents similar)**


**Note:**  
 Bearing may be shifted from Truss Pins  
 as shown, Intermediate Bent may be shifted  
 from Bearing an additional 3" to allow for  
 pile placement tolerances.



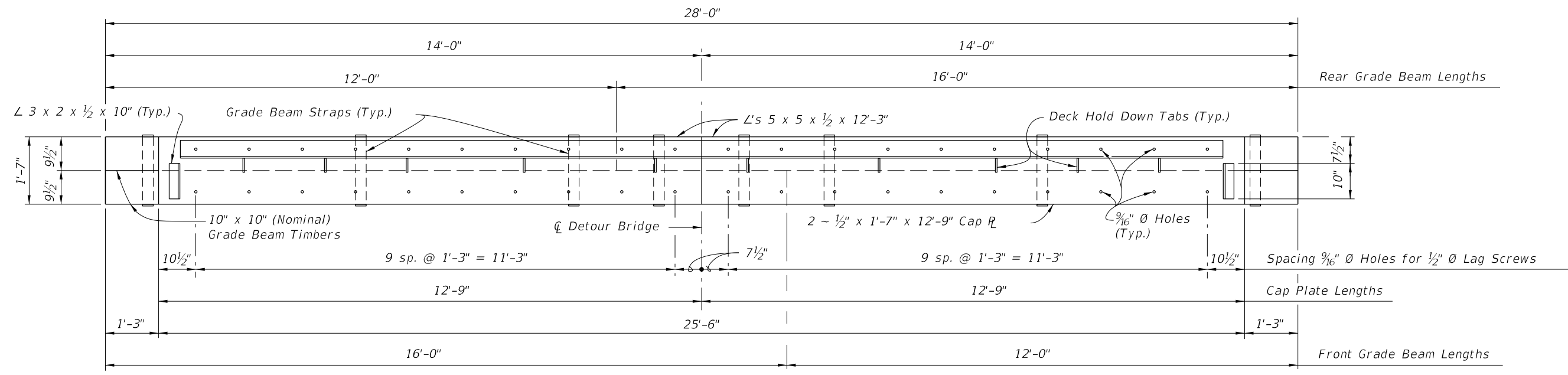
**VIEW B-B**



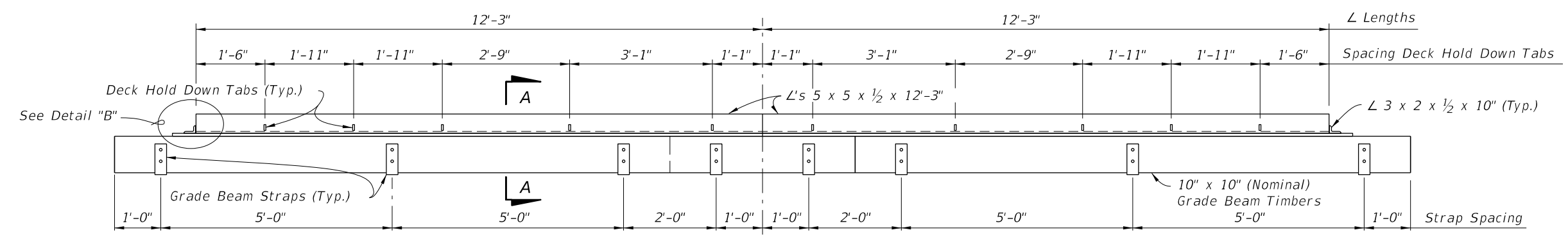
**END VIEW A-A  
 DISTRIBUTING BEAM END FRAME DETAIL**

LAST REVISION	REVISION	DESCRIPTION:	 <b>FDOT DESIGN STANDARDS          FY 2012/2013</b>	<b>TEMPORARY DETOUR BRIDGE          GENERAL NOTES AND DETAILS</b>	INDEX NO. <b>21600</b>	SHEET NO. <b>6</b>
07/01/06						

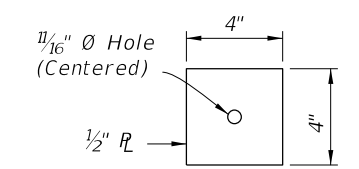
C:\projects\standards\structures\current\ready\4release\2012book\_draft\21600-7of7.dgn  
 8/15/31 AM  
 rd960rh  
 12/30/2011



PLAN VIEW

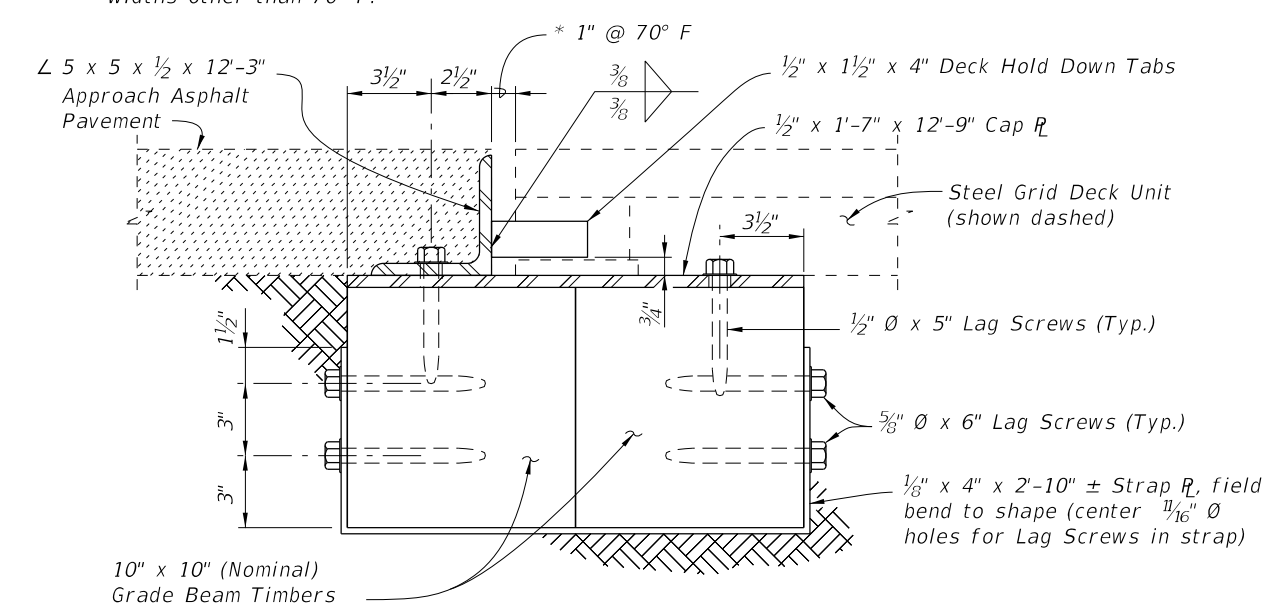


ELEVATION VIEW

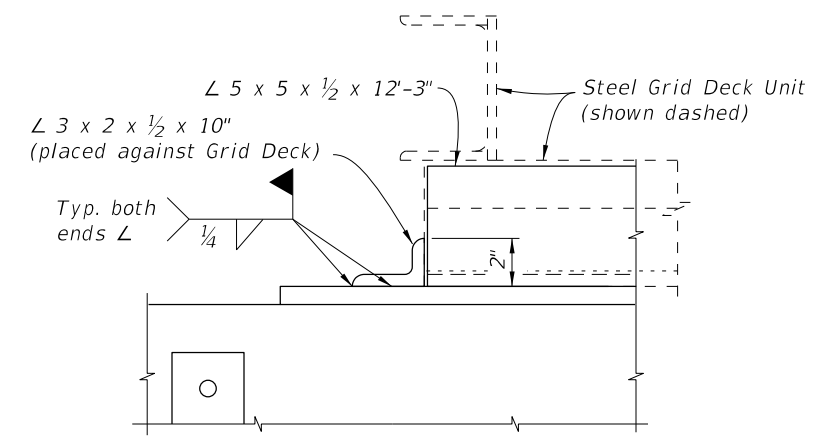


ANCHOR PLATE DETAIL

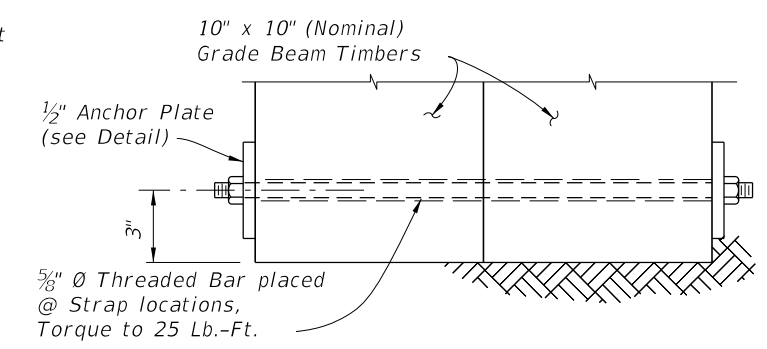
\* See General Notes for setting widths other than 70° F.



SECTION A-A



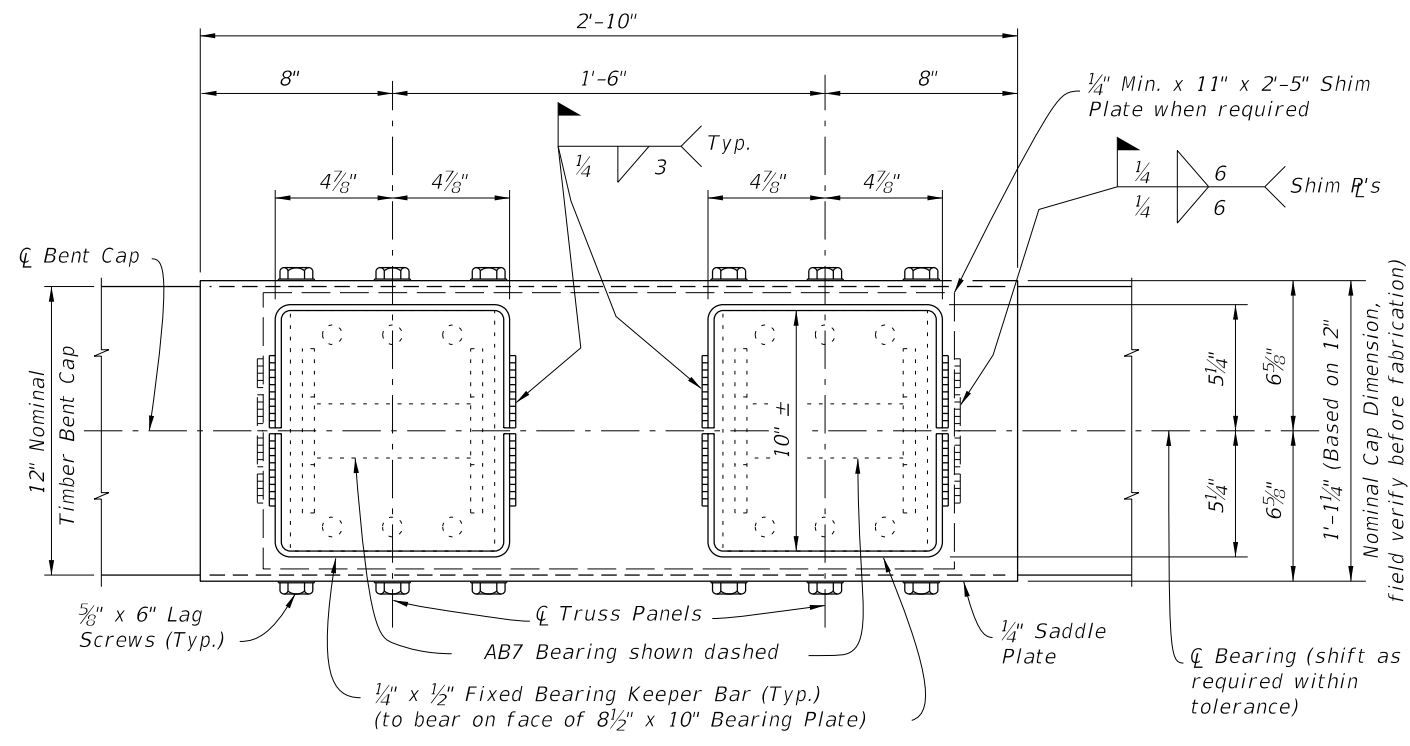
DETAIL "B"



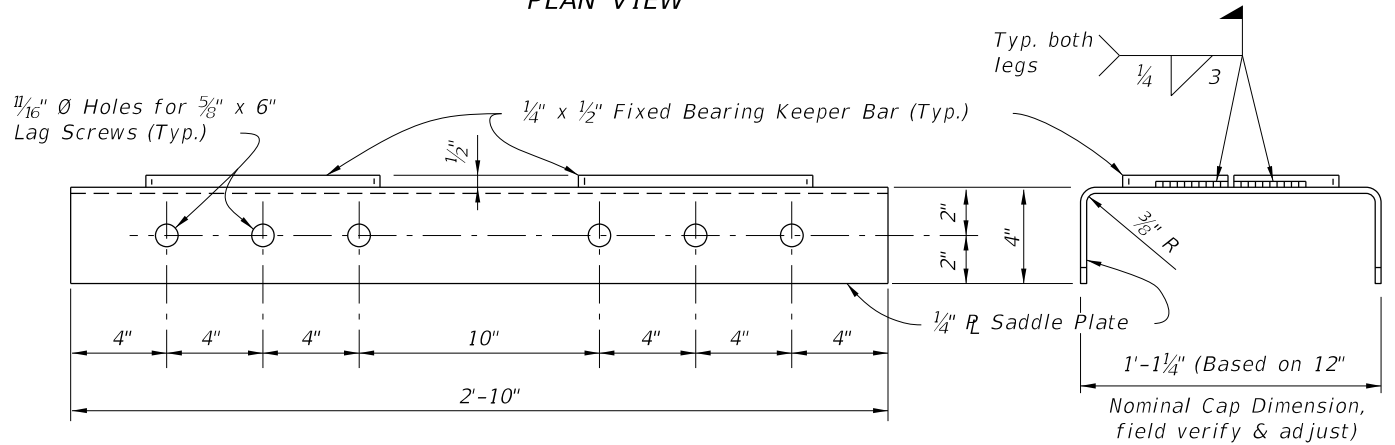
OPTIONAL THROUGH BOLT DETAIL (MAY BE USED IN LIEU OF STRAPS)

LAST REVISION	DESCRIPTION:		<b>FDOT DESIGN STANDARDS</b> FY 2012/2013	<b>TEMPORARY DETOUR BRIDGE</b> <b>GENERAL NOTES AND DETAILS</b>	INDEX NO.	SHEET NO.
07/01/06	REVISION				21600	7

12/30/2011 8:15:32 AM rd960rh C:\projects\standards\structures\current\ready\4release\2012book\_draft\21610-1of3.dgn

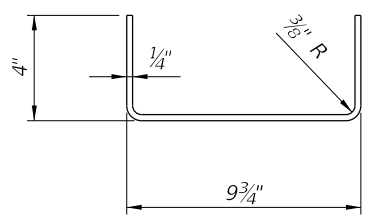


PLAN VIEW



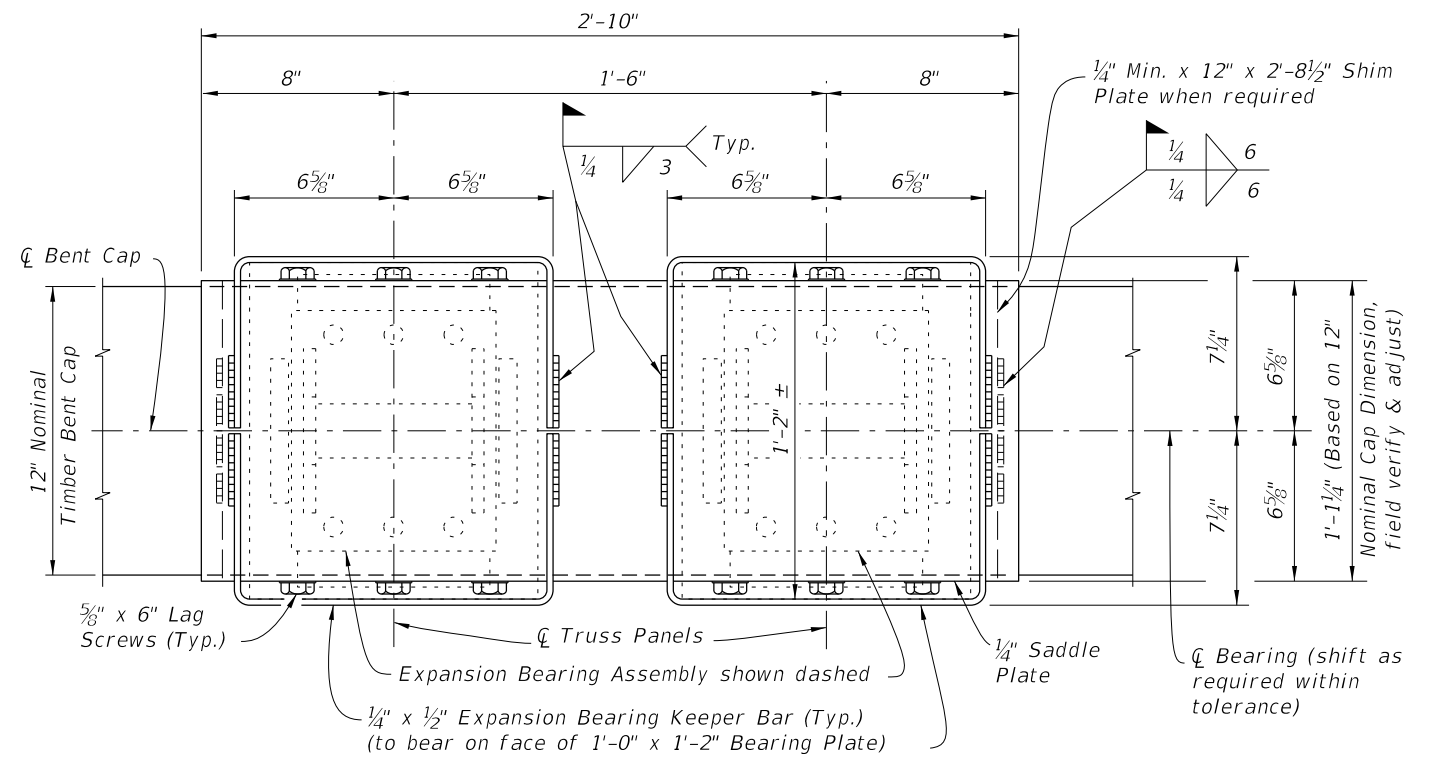
ELEVATION VIEW OF SADDLE PLATE

END VIEW

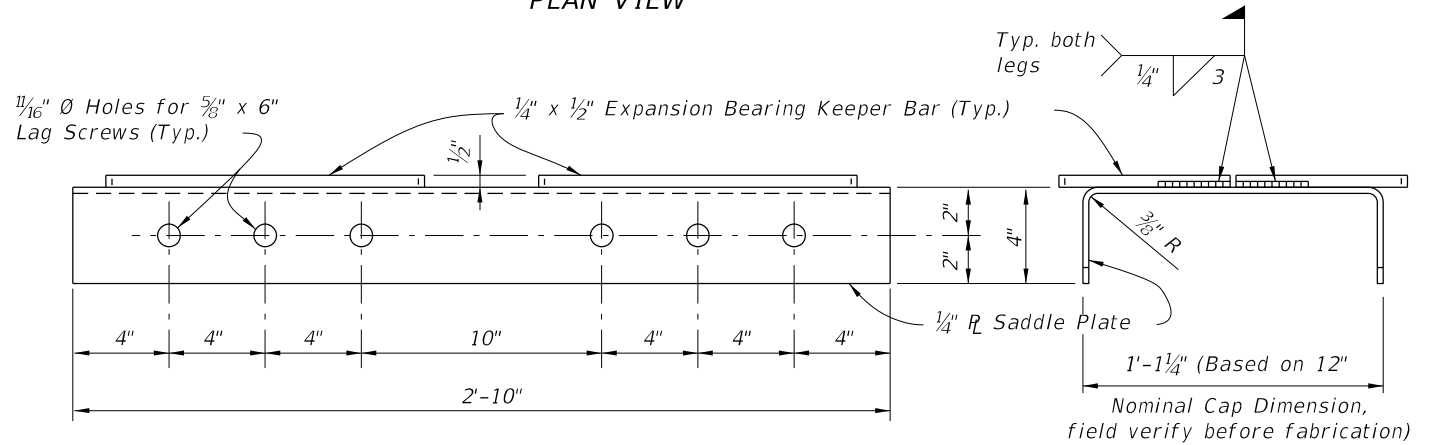


FIXED BEARING KEEPER BAR DETAIL

FIXED BEARING DETAILS

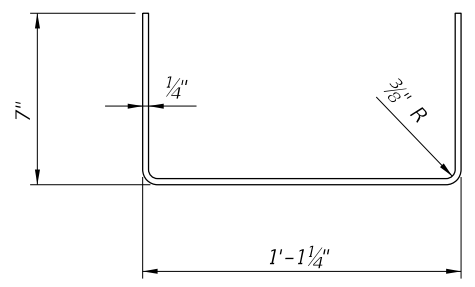


PLAN VIEW




ELEVATION VIEW OF SADDLE PLATE

END VIEW

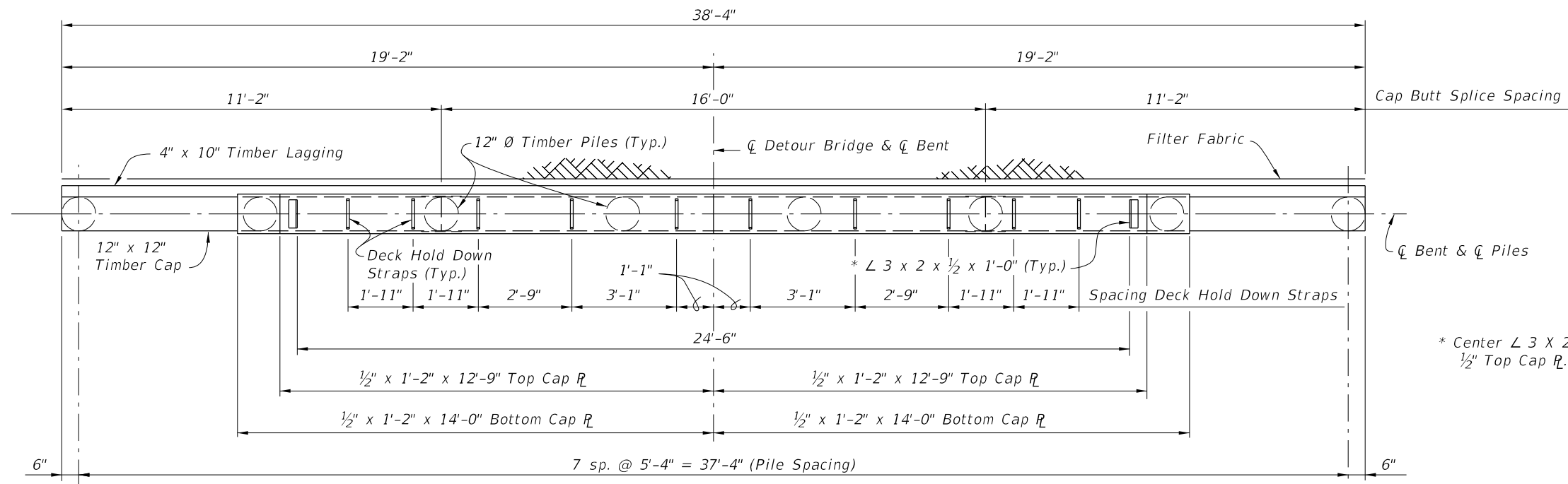


EXPANSION BEARING KEEPER BAR DETAIL

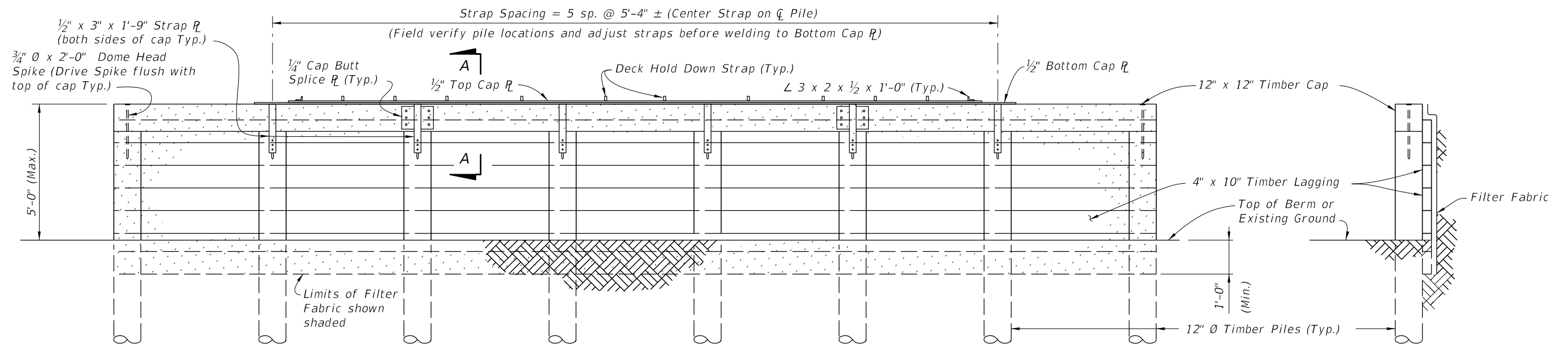
EXPANSION BEARING DETAILS

LAST REVISION	REVISION	DESCRIPTION:	 <b>FDOT DESIGN STANDARDS</b> FY 2012/2013	<b>TEMPORARY DETOUR BRIDGE DETAILS -</b> <b>TIMBER PILE FOUNDATIONS</b>	INDEX NO.	SHEET NO.
07/01/06					21610	1





PLAN VIEW



ELEVATION VIEW

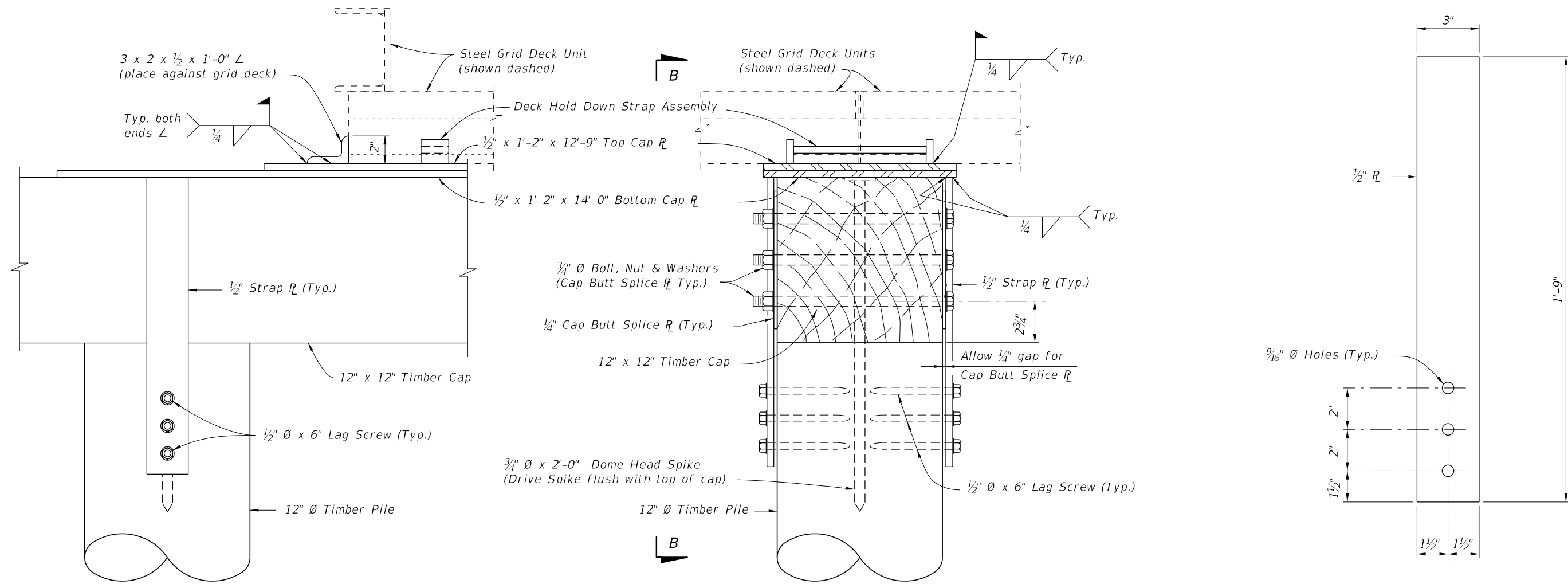
END VIEW

BACKWALL BENT DETAILS

12/30/2011 8:15:33 AM rd960/h C:\projects\standards\structures\current\ready\4release\2012book\_draft\21610-2of3.dgn

LAST REVISION	DESCRIPTION:	 <b>FDOT DESIGN STANDARDS</b> FY 2012/2013	<b>TEMPORARY DETOUR BRIDGE DETAILS -</b> <b>TIMBER PILE FOUNDATIONS</b>	INDEX NO.	SHEET NO.
07/01/06				21610	2

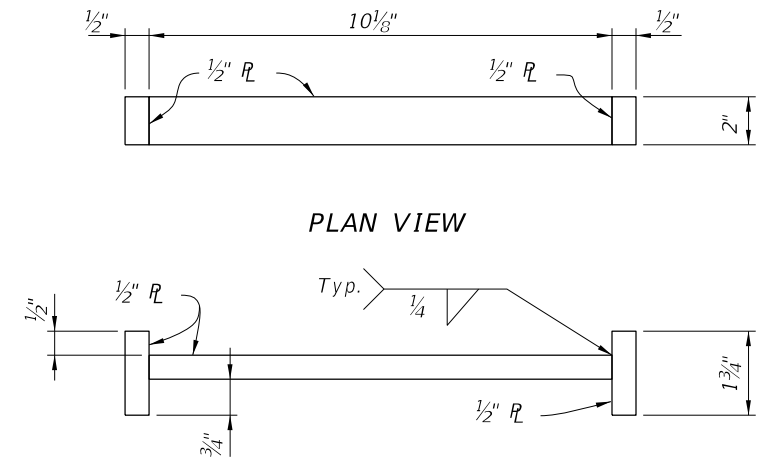
12/30/2011 8:15:33 AM rd960rh C:\projects\standards\structures\current\ready\4release\2012book\_drafter\21610-3of3.dgn



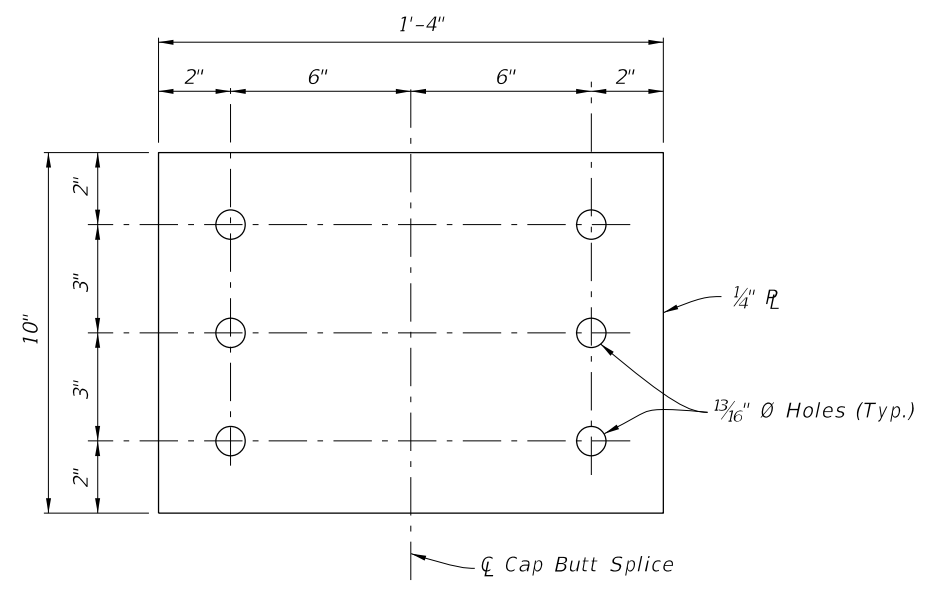
**VIEW B-B  
(SHOWING END OF CAP PLATES)**

**SECTION A-A**

**STRAP PLATE DETAIL**



**HOLD DOWN STRAP ASSEMBLY DETAIL**

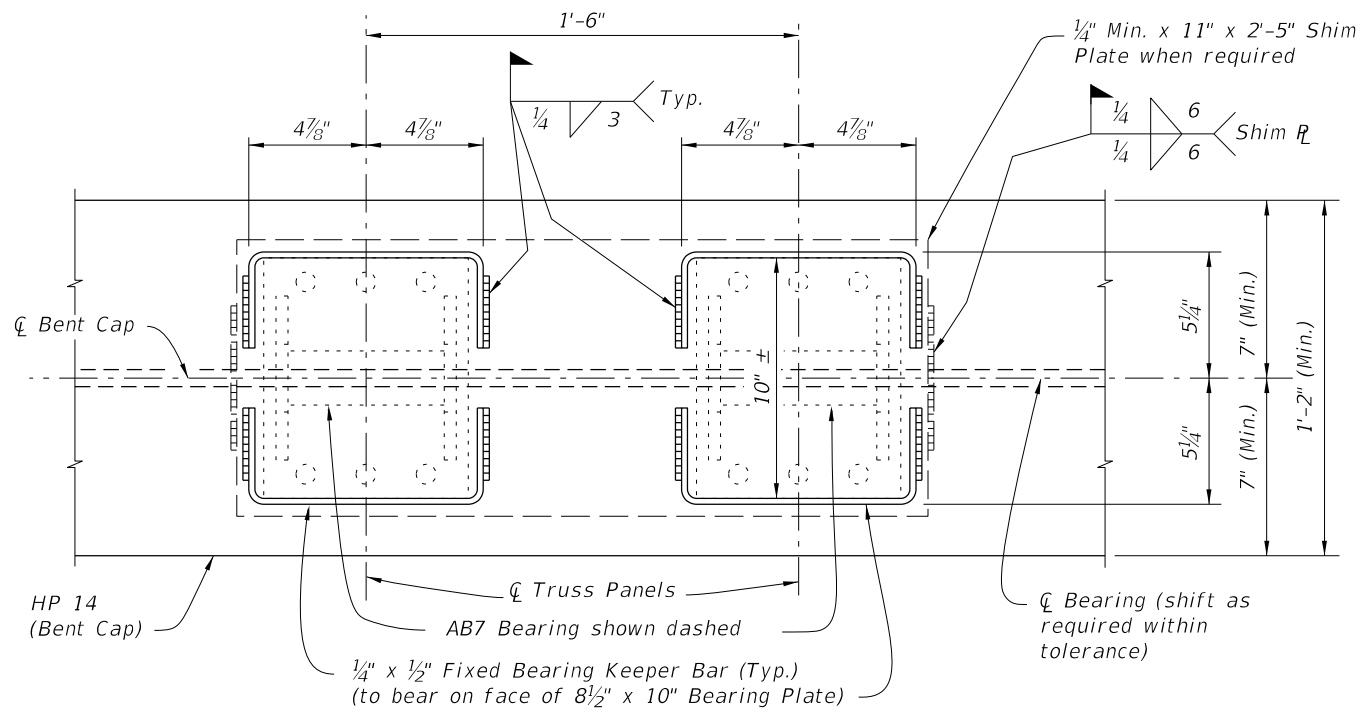


**CAP BUTT SPLICE PLATE DETAIL**

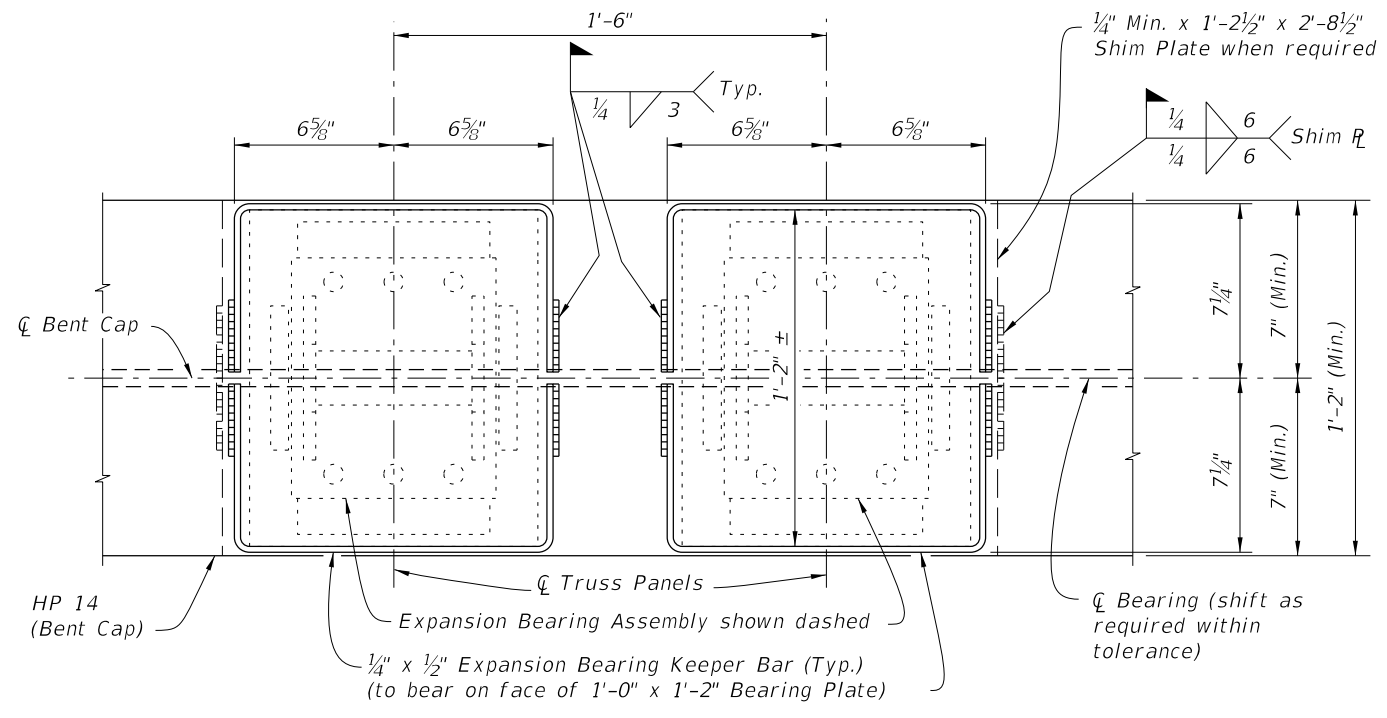
**BACKWALL BENT DETAILS**

<b>LAST REVISION</b> 07/01/06	<b>REVISION</b>	DESCRIPTION:		<b>FDOT DESIGN STANDARDS</b> FY 2012/2013	<b>TEMPORARY DETOUR BRIDGE DETAILS -</b> <b>TIMBER PILE FOUNDATIONS</b>	<b>INDEX NO.</b> 21610	<b>SHEET NO.</b> 3
----------------------------------	-----------------	--------------	---	--	--	---------------------------	-----------------------

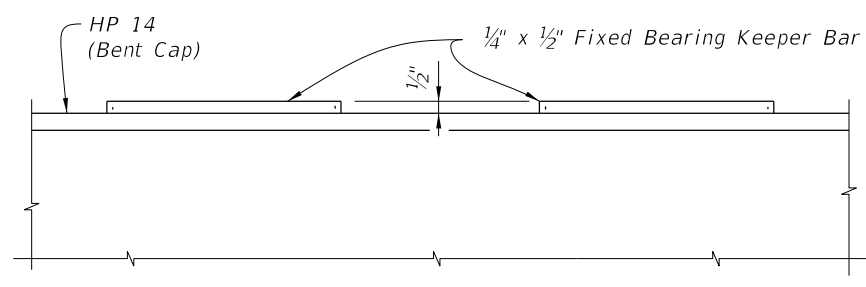
12/30/2011 8:15:34 AM rd9607h C:\projects\standards\structures\current\ready\4release\2012book\_draft\21620-1of2.dgn



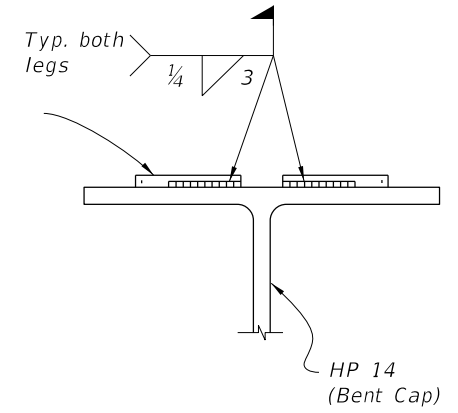
PARTIAL PLAN VIEW



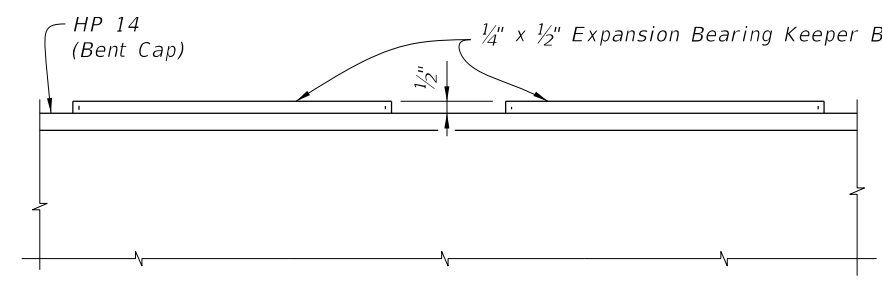
PARTIAL PLAN VIEW



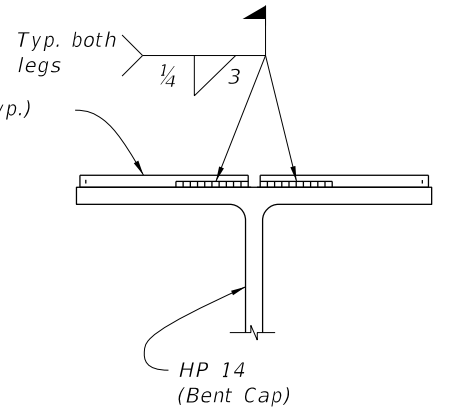
PARTIAL ELEVATION VIEW



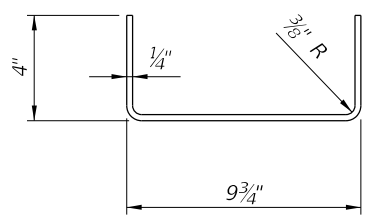
END VIEW



PARTIAL ELEVATION VIEW

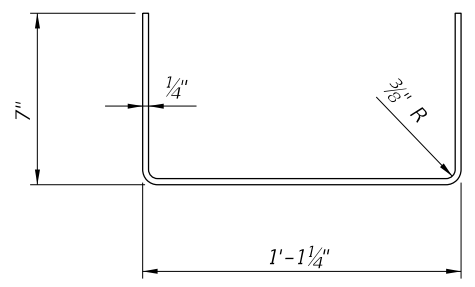


END VIEW



FIXED BEARING KEEPER BAR DETAIL

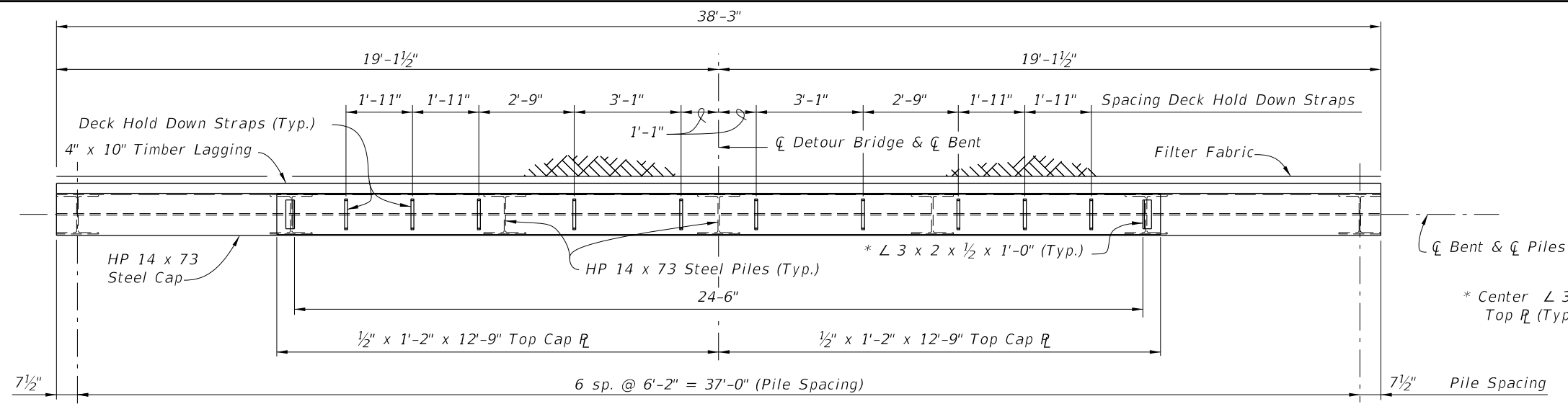
===== FIXED BEARING DETAILS =====



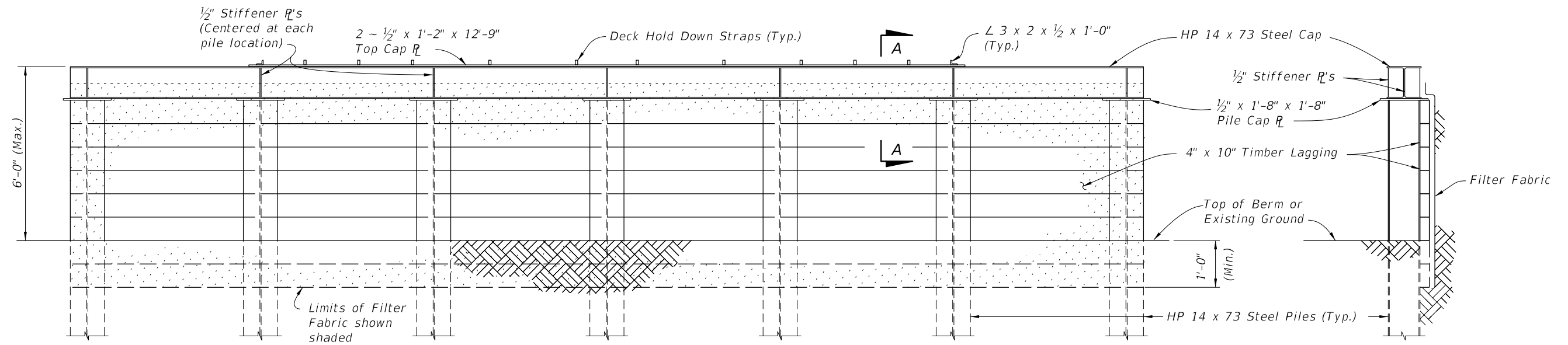
EXPANSION BEARING KEEPER BAR DETAIL

===== EXPANSION BEARING DETAILS =====

LAST REVISION	REVISION	DESCRIPTION:	 <b>FDOT DESIGN STANDARDS</b> FY 2012/2013	<b>TEMPORARY DETOUR BRIDGE DETAILS -</b> <b>STEEL H PILE FOUNDATIONS</b>	INDEX NO.	SHEET NO.
07/01/06					21620	1

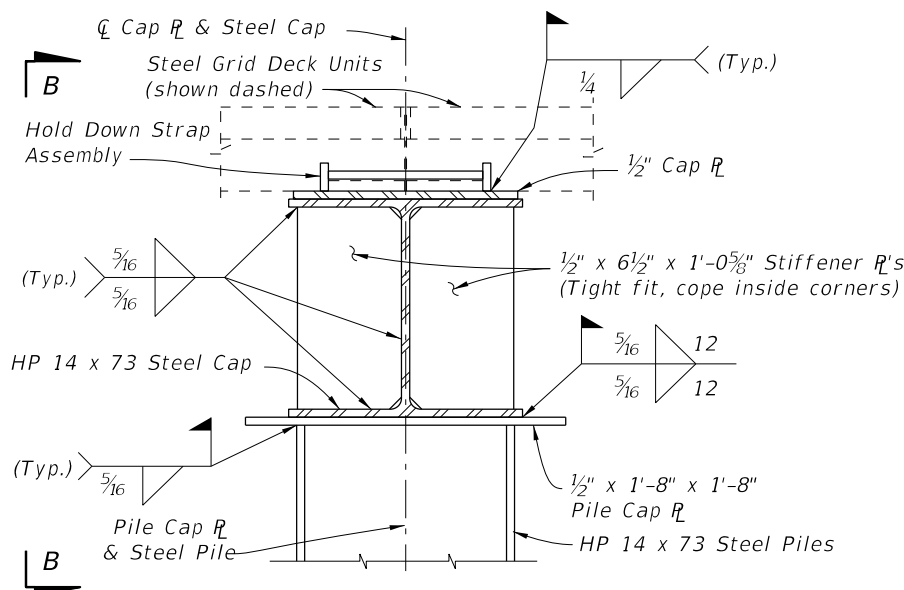


PLAN VIEW

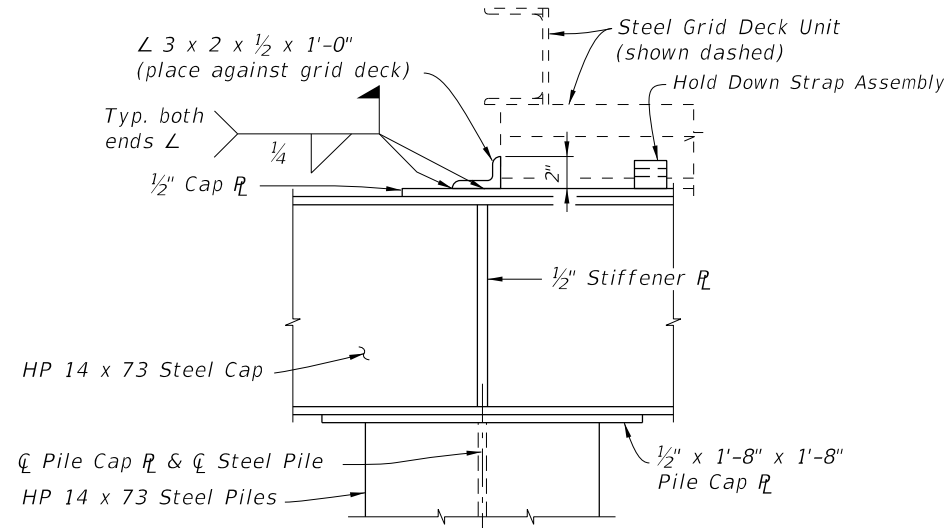


ELEVATION VIEW

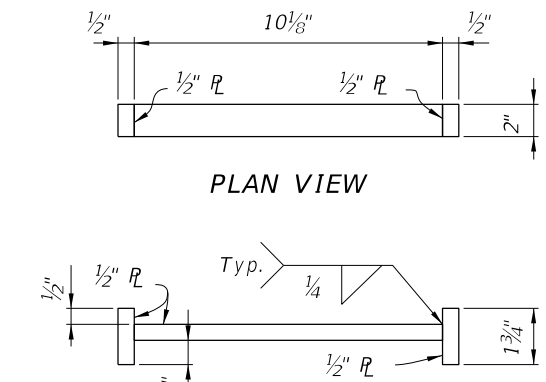
END VIEW



SECTION A-A  
(LAGGING NOT SHOWN FOR CLARITY)



VIEW B-B



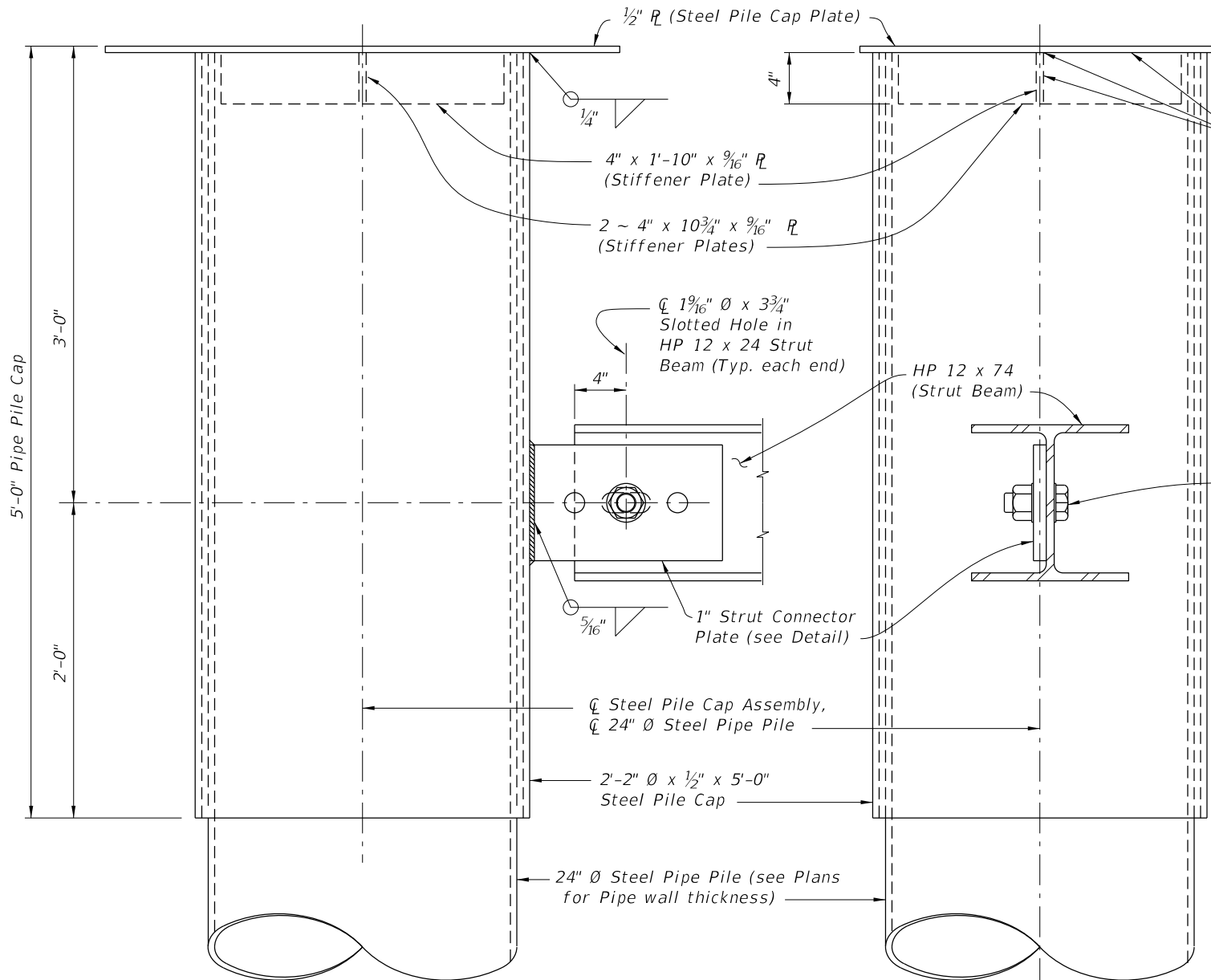
HOLD DOWN STRAP ASSEMBLY DETAIL

BACKWALL BENT DETAILS

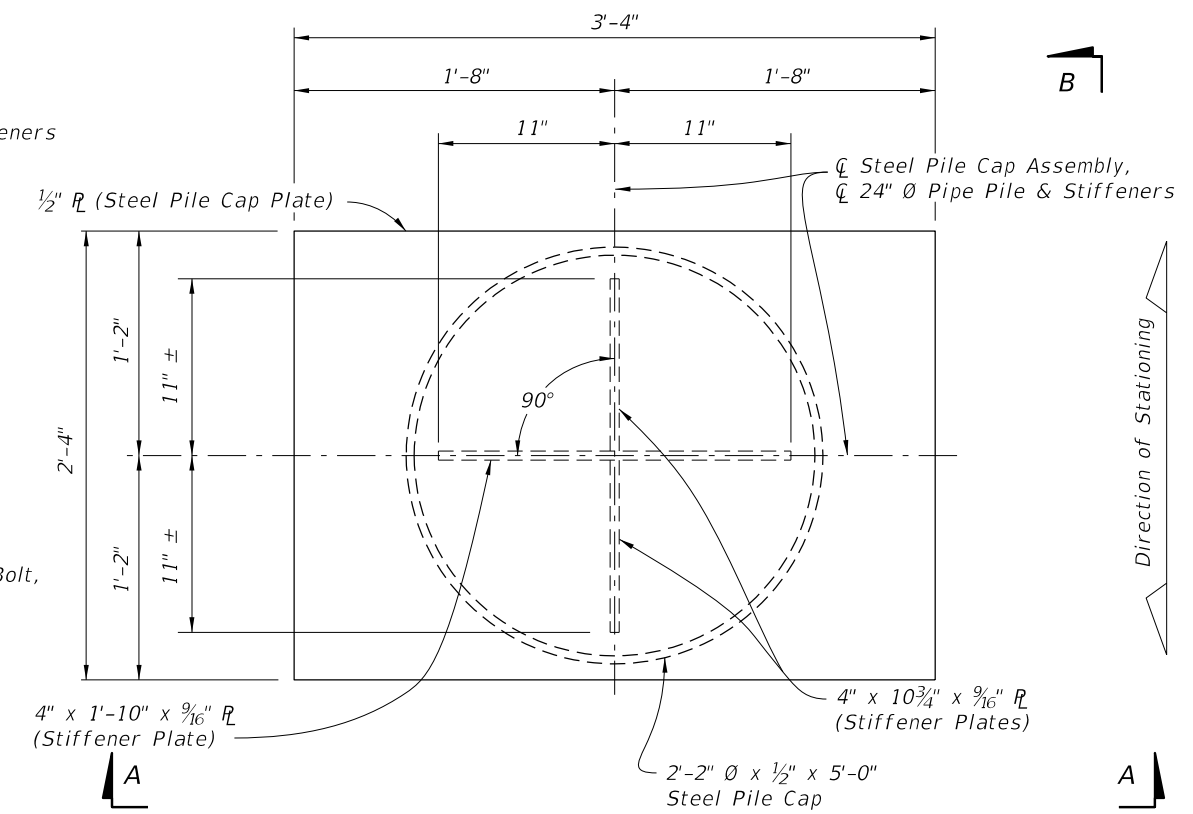
C:\projects\standards\structures\current\ready\4release\2012book\_draft\21620-2of2.dgn  
 rd960rh  
 8:15:35 AM  
 12/30/2011

LAST REVISION	DESCRIPTION:	 <b>FDOT DESIGN STANDARDS</b> FY 2012/2013	<b>TEMPORARY DETOUR BRIDGE DETAILS -</b> <b>STEEL H PILE FOUNDATIONS</b>	INDEX NO.	SHEET NO.
07/01/06				21620	2

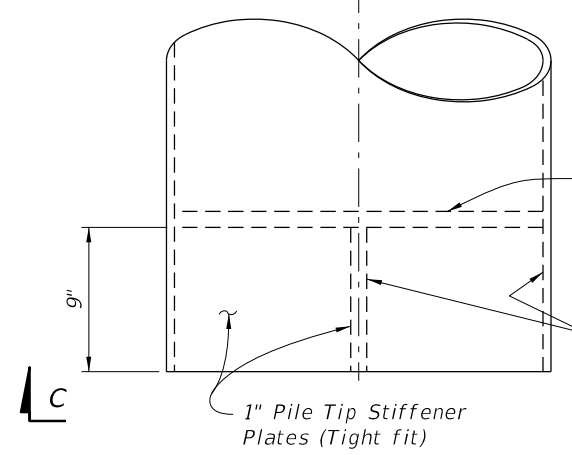
12/30/2011 8:15:36 AM rd9607h C:\projects\standards\structures\current\ready\4release\2012book\_draft\21630-1of3.dgn



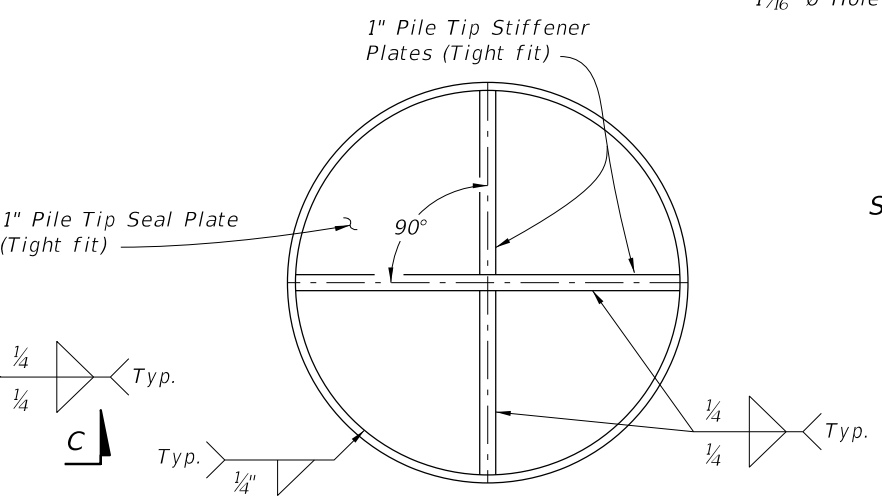
PARTIAL VIEW A-A



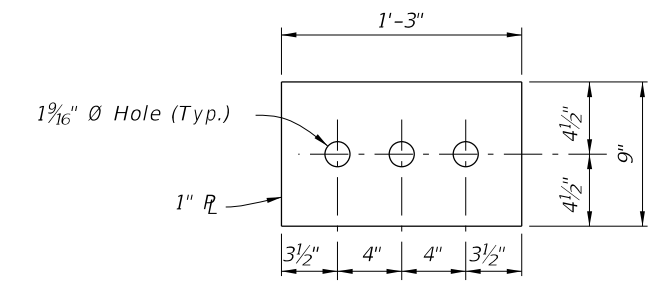
PLAN VIEW STEEL PILE CAP ASSEMBLY  
(Bearing Plates and Bearing Keeper Bars not show for clarity)



VIEW B-B



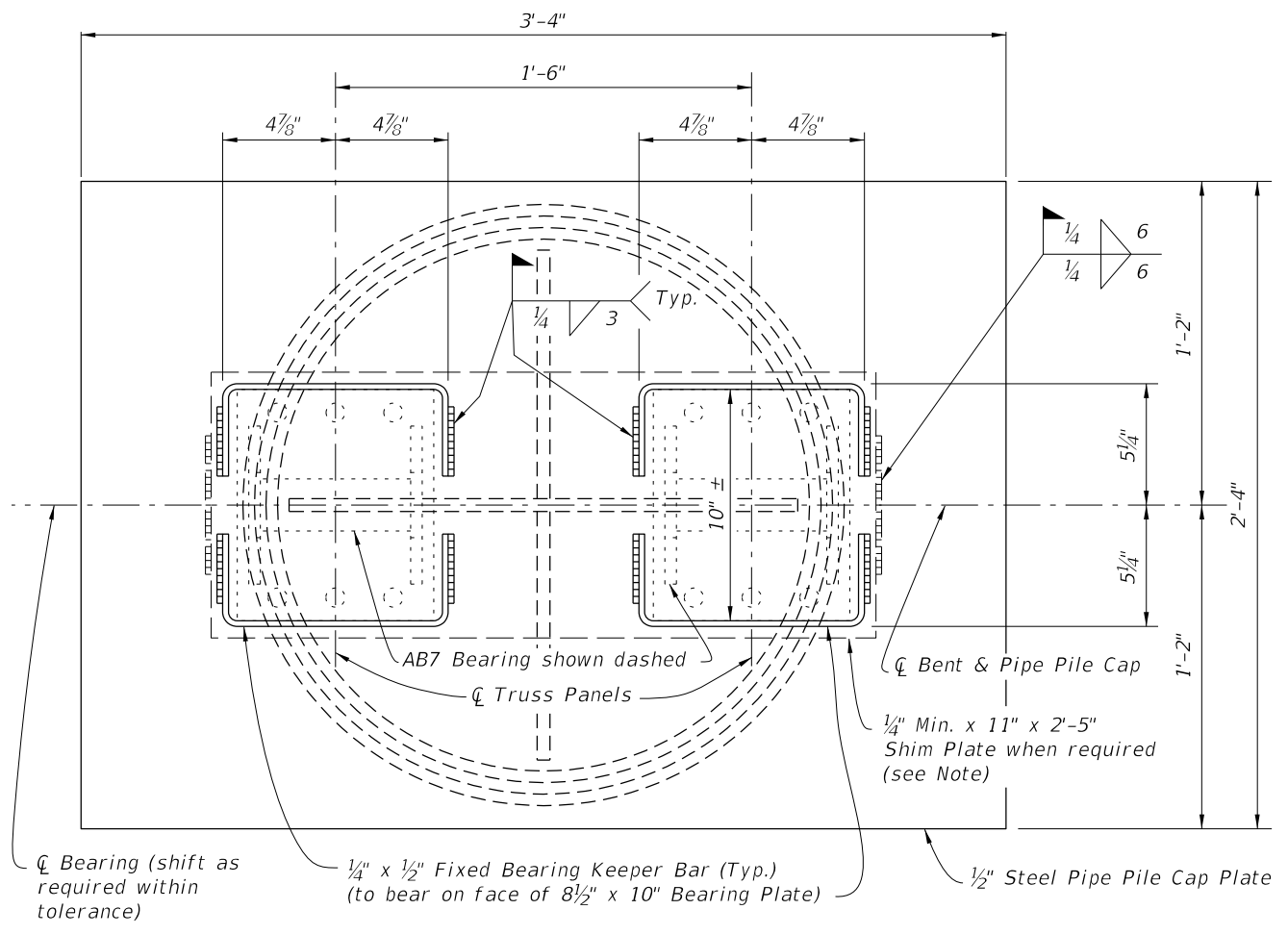
VIEW C-C  
PILE TIP DETAIL



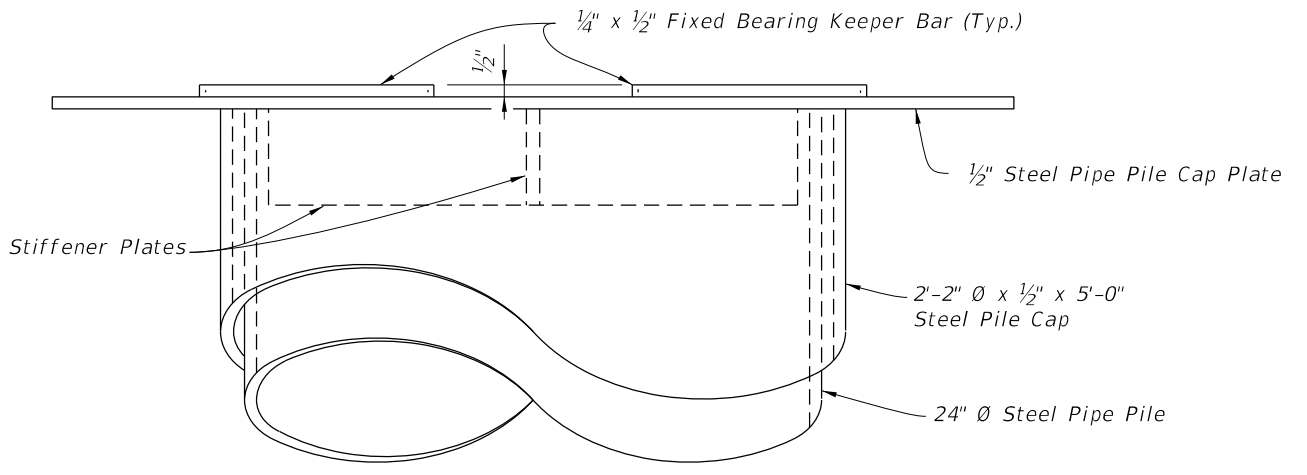
STRUT CONNECTOR PLATE DETAIL

LAST REVISION	REVISION	DESCRIPTION:		<b>FDOT DESIGN STANDARDS</b> FY 2012/2013	<b>TEMPORARY DETOUR BRIDGE DETAILS -</b> <b>STEEL PIPE PILE FOUNDATIONS</b>	INDEX NO.	SHEET NO.
07/01/06						21630	1

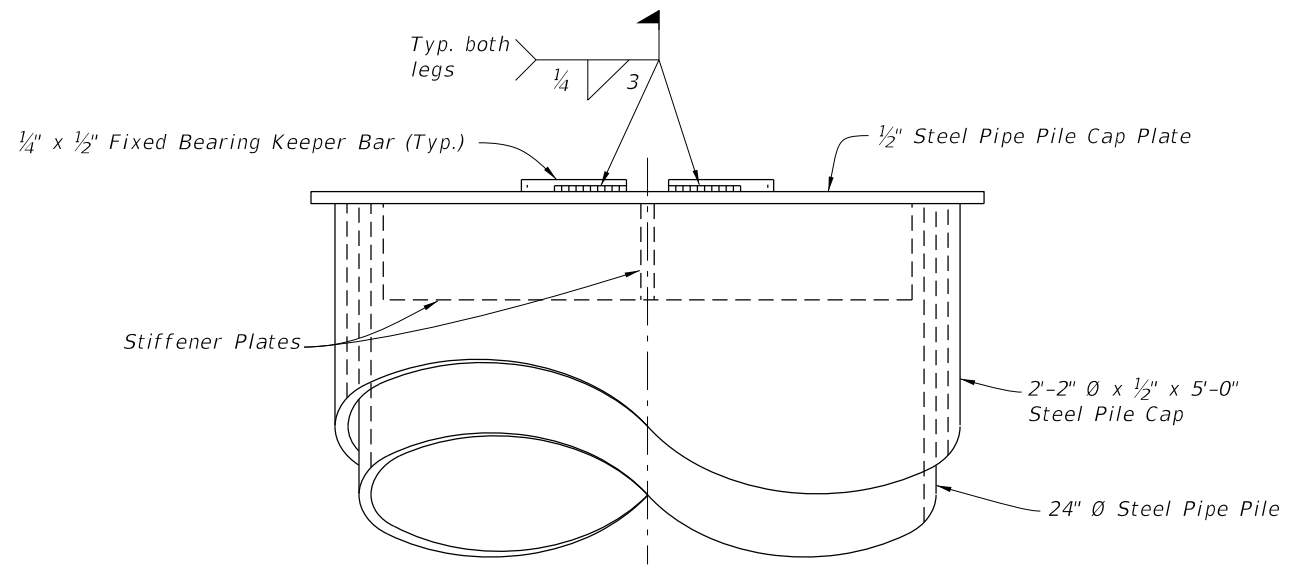
12/30/2011 8:15:37 AM rd960rh C:\projects\standards\structures\current\ready\4release\2012book\_draft\21630-2of3.dgn



PARTIAL PLAN VIEW

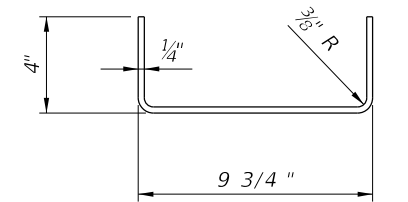


PARTIAL ELEVATION VIEW



END VIEW

Note:  
Use Shim Plates as required to provide equal bearing seat elevations across the bent. Vary thickness of Shim Plate across the pile cap plate to provide a level bearing area in the transverse direction.

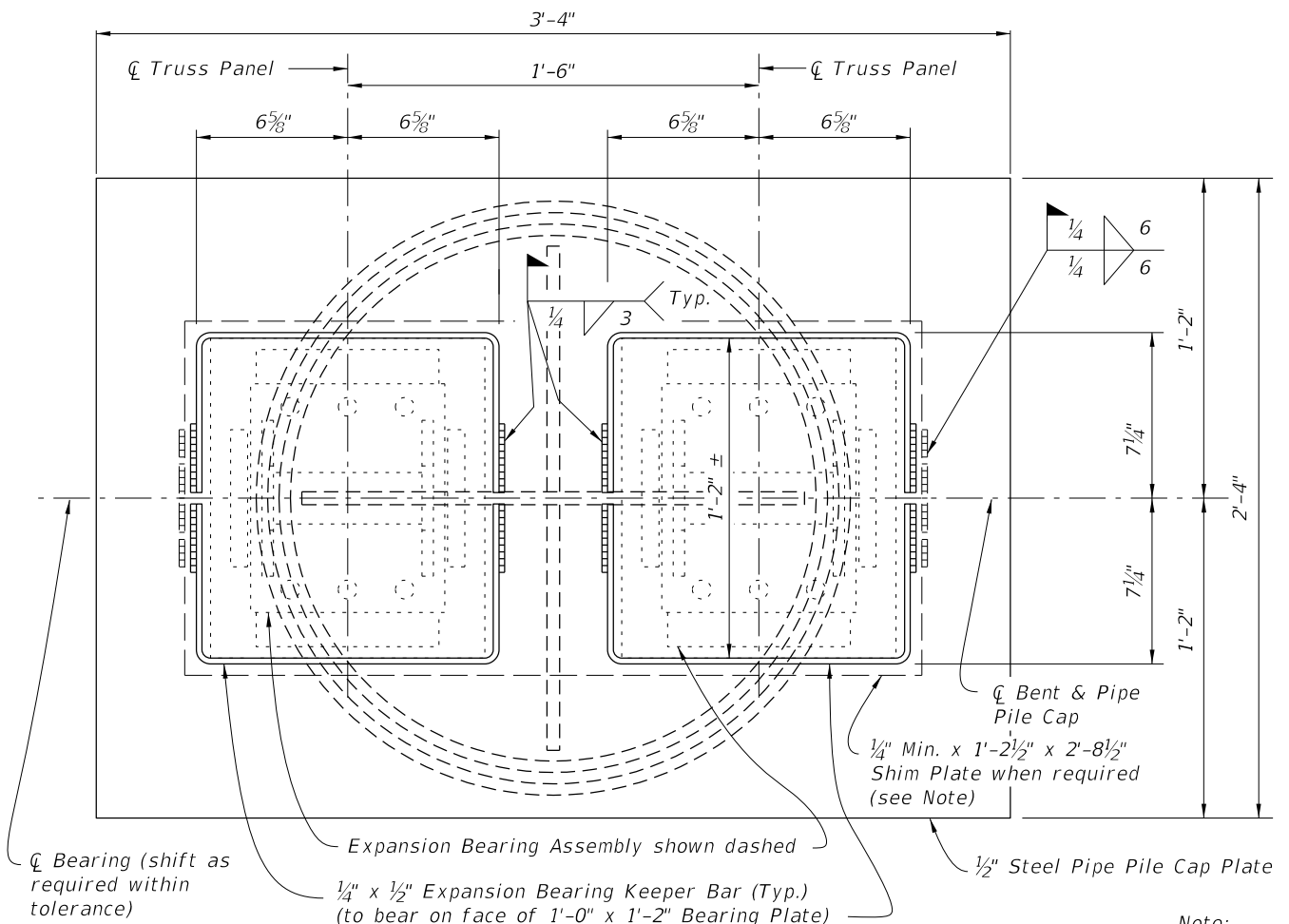


FIXED BEARING KEEPER BAR DETAIL

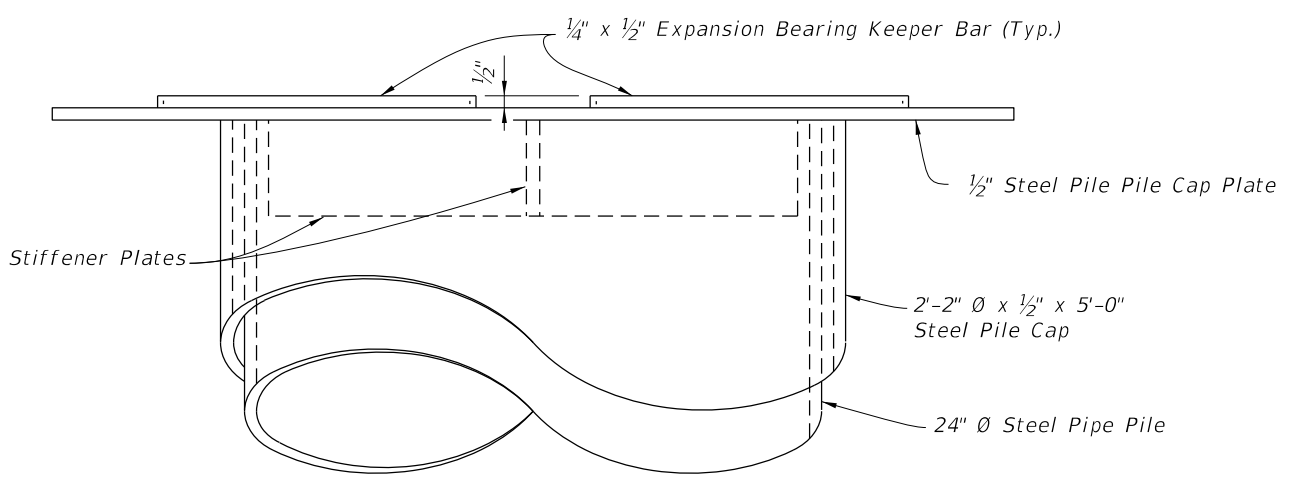
===== FIXED BEARING DETAILS =====

LAST REVISION	REVISION	DESCRIPTION:		<b>FDOT DESIGN STANDARDS</b> FY 2012/2013	<b>TEMPORARY DETOUR BRIDGE DETAILS -</b> <b>STEEL PIPE PILE FOUNDATIONS</b>	INDEX NO.	SHEET NO.
07/01/06						21630	2

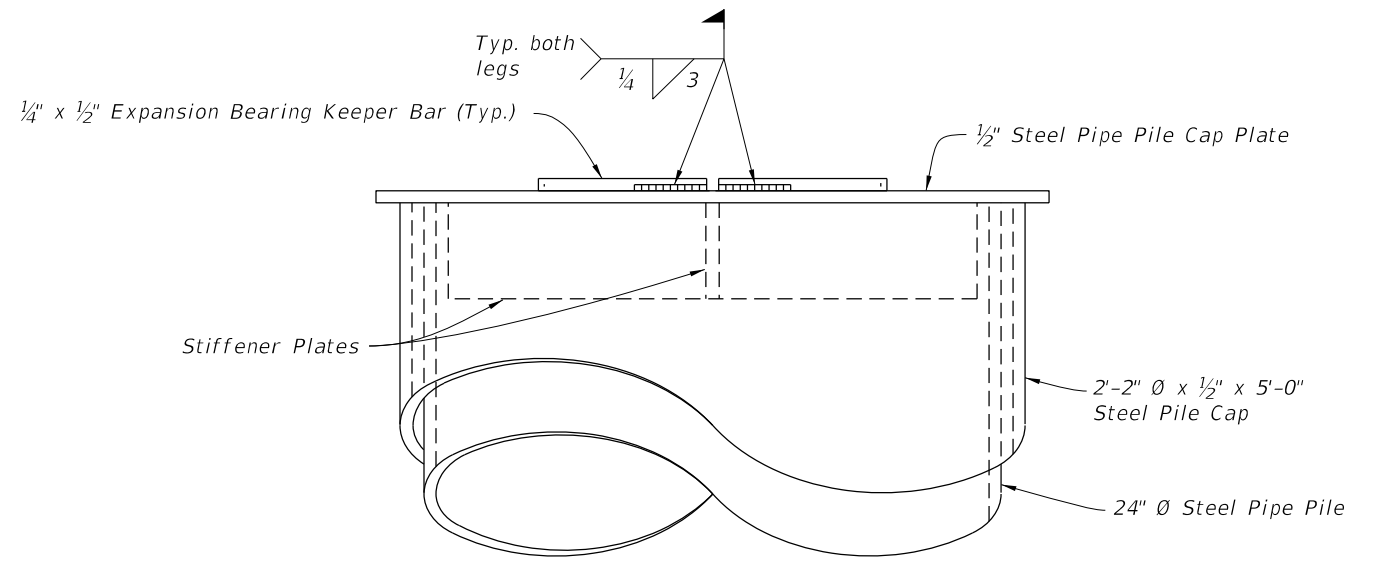
12/30/2011 8:15:38 AM rd960rh C:\projects\standards\structures\current\ready\4release\2012book\_draft\21630-3of3.dgn



**PARTIAL PLAN VIEW**

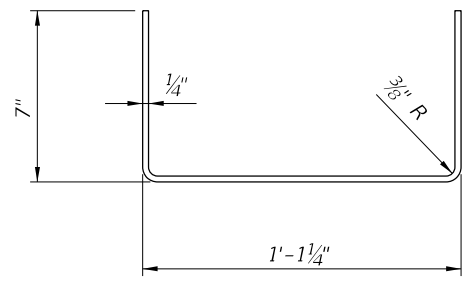


**PARTIAL ELEVATION VIEW**



**END VIEW**

**Note:**  
 Use Shim Plates as required to provide equal bearing seat elevations across the bent. Vary thickness of Shim Plate across the pile cap plate to provide a level bearing area in the transverse direction.



**EXPANSION BEARING KEEPER BAR DETAIL**

**ABUTMENT AND INTERMEDIATE EXPANSION BEARING DETAILS**

LAST REVISION	REVISION	DESCRIPTION:		<b>FDOT DESIGN STANDARDS</b> <b>FY 2012/2013</b>	<b>TEMPORARY DETOUR BRIDGE DETAILS -</b> <b>STEEL PIPE PILE FOUNDATIONS</b>	INDEX NO.	SHEET NO.
07/01/06						21630	3