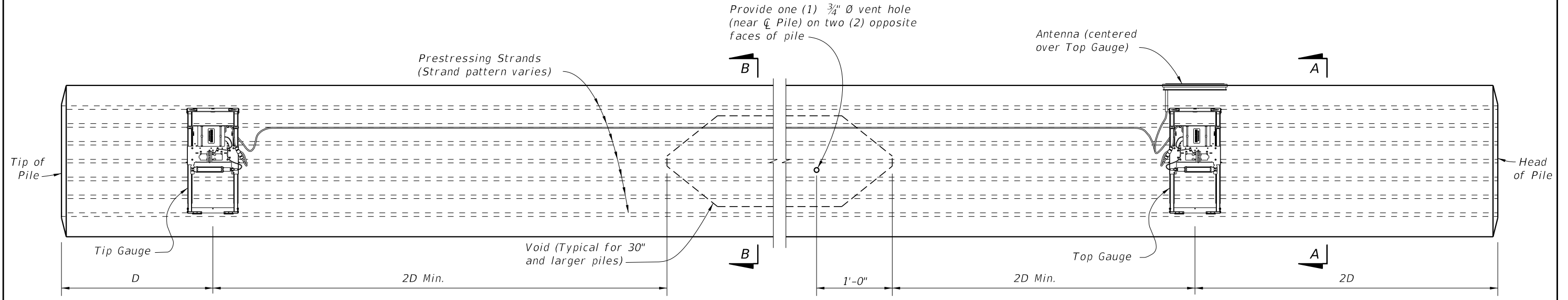
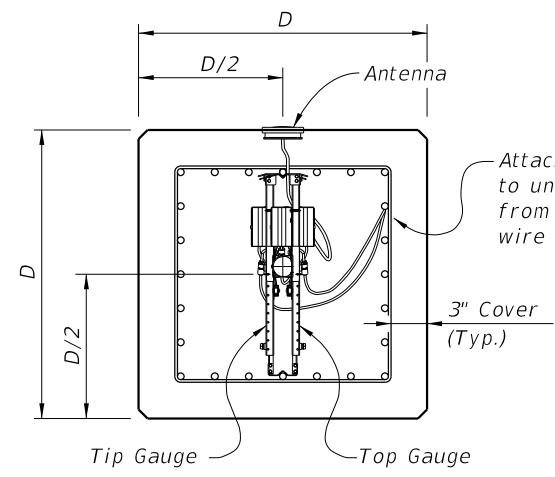


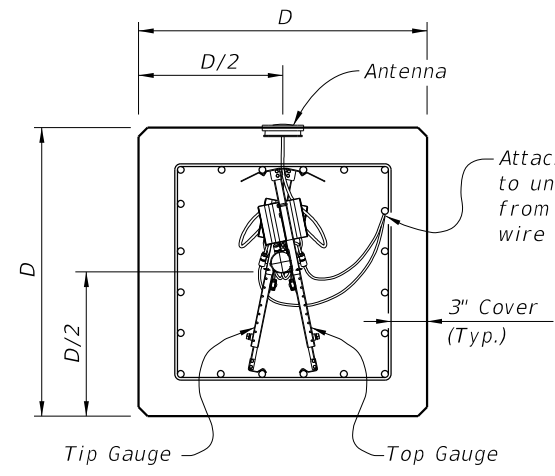
12/30/2011 11:50:55 AM rd9607h C:\projects\standards\structures\current\ready\4release\2012book\_draft\20602-1of1.dgn



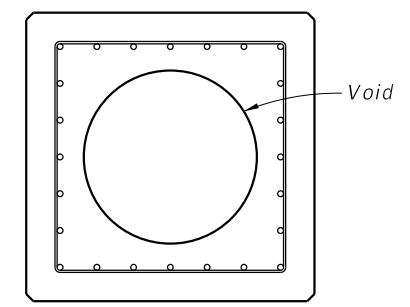
ELEVATION



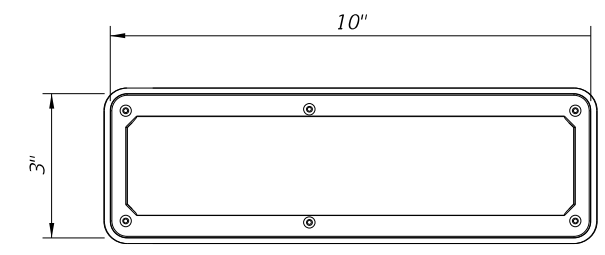
SECTION A-A  
(Strand Pattern with odd number of strands per face)



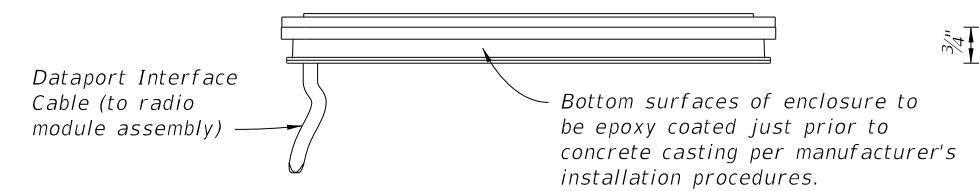
SECTION A-A  
(Strand Pattern with even number of strands per face)



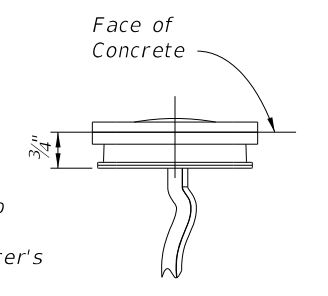
SECTION B-B  
(Showing Voided Pile,  
Solid Pile Similar)



ANTENNA TOP VIEW




ANTENNA SIDE VIEW



ANTENNA END VIEW

NOTE:  
Provide EDC Instrumentation in square prestressed concrete piles (18" and larger) in accordance with Specification Section 455 for bridge foundations.

LAST REVISION	REVISION	DESCRIPTION:	 <b>FDOT DESIGN STANDARDS</b> FY 2012/2013	<b>EDC INSTRUMENTATION FOR</b> <b>SQUARE PRESTRESSED CONCRETE PILES</b>	INDEX NO.	SHEET NO.
01/01/12					20602	1