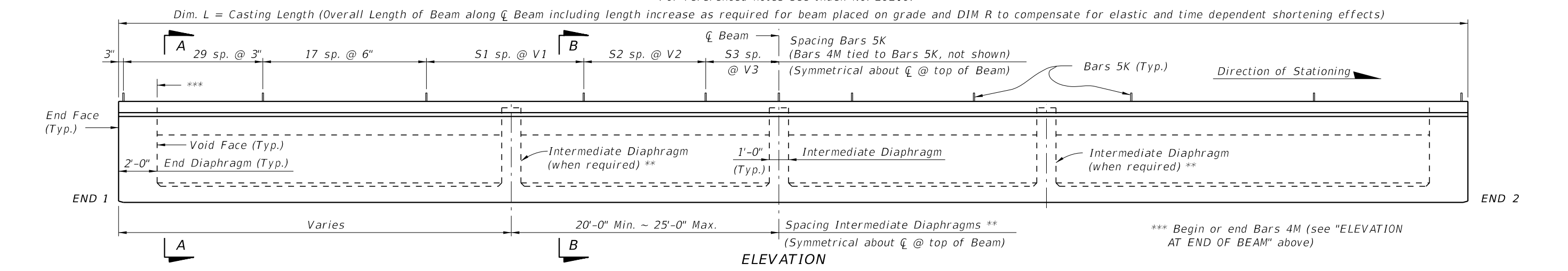
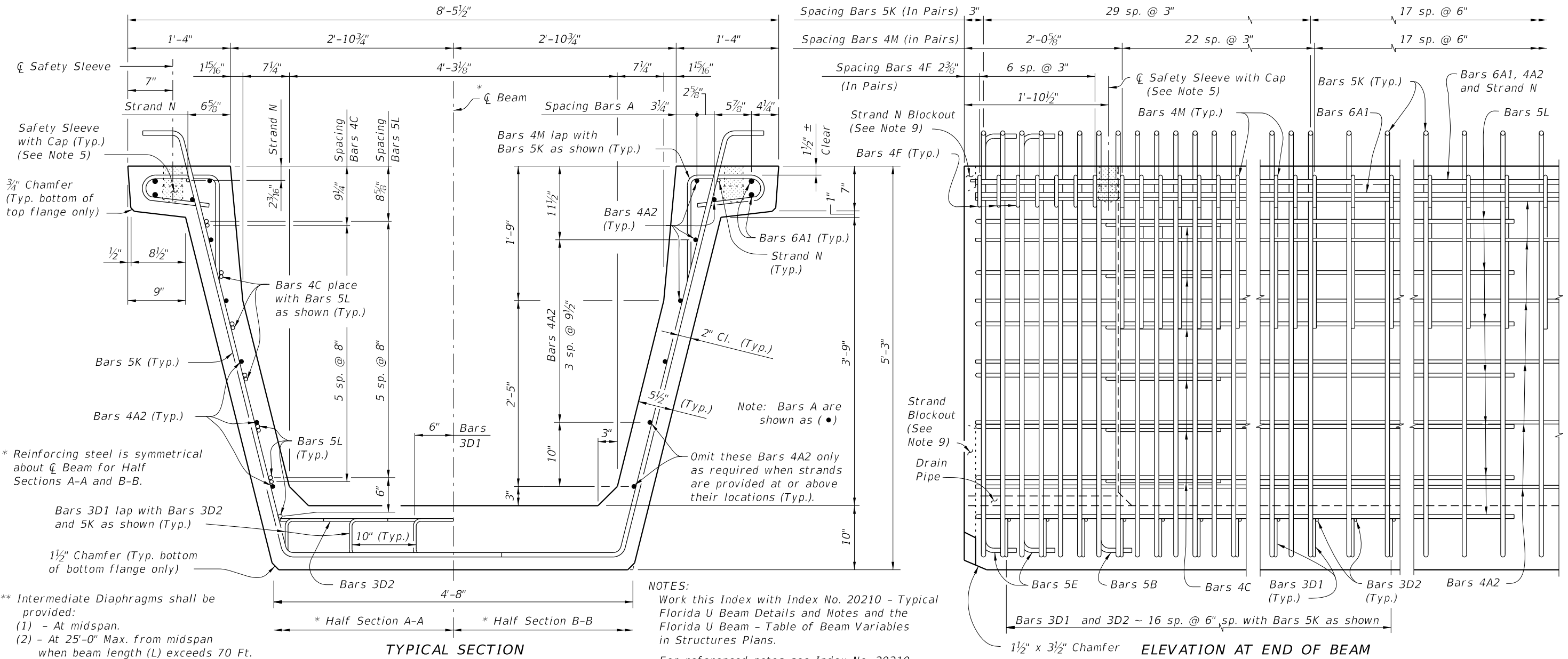


C:\projects\standards\structures\current\ready\4release\2012book_draft\20263-1of3.dgn
 11:50:41 AM
 rd960rh
 12/30/2011



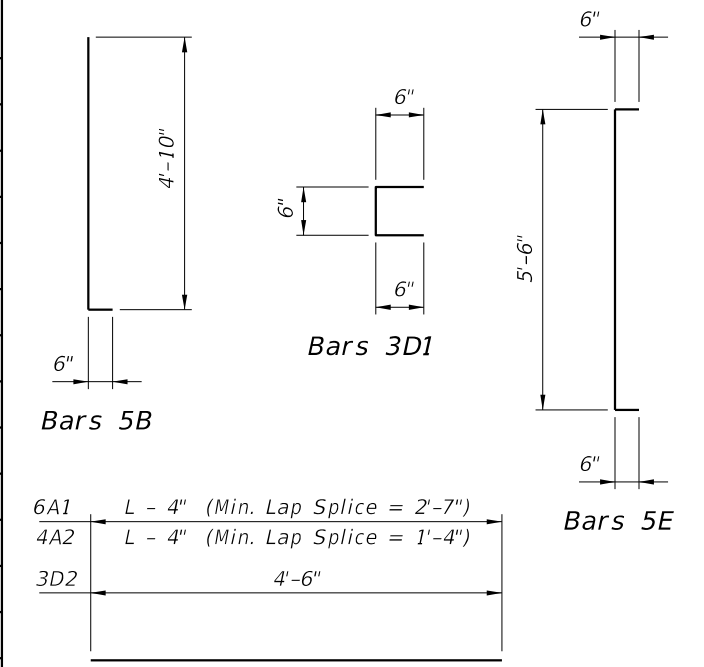
| | | | | | | |
|---------------|----------|--------------|--|---|-----------|-----------|
| LAST REVISION | REVISION | DESCRIPTION: |  FDOT DESIGN STANDARDS FY 2012/2013 | FLORIDA U 63 BEAM - STANDARD DETAILS | INDEX NO. | SHEET NO. |
| 07/01/05 | | | | | 20263 | 1 |

C:\projects\standards\structures\current\ready\4release\2012book_draft\20263-3of3.dgn 11:50:43 AM rd960rh 12/30/2011

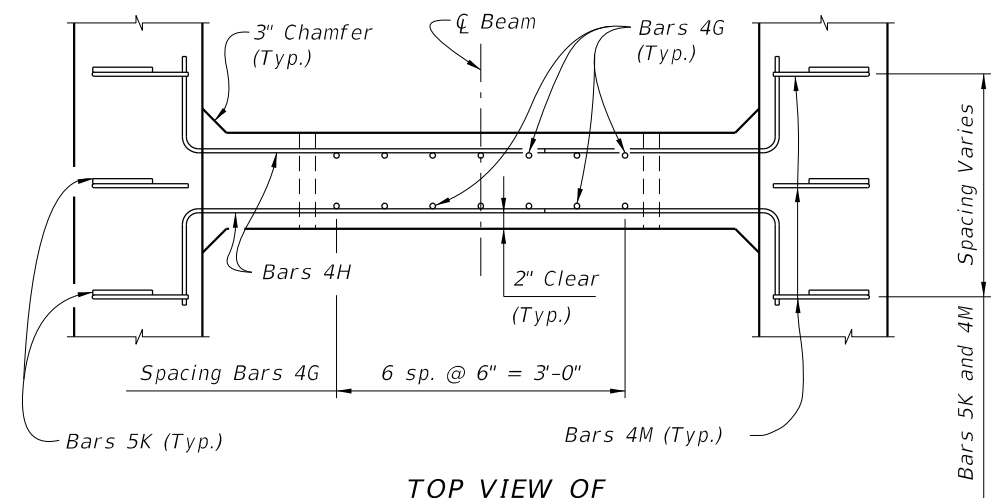
CONVENTIONAL REINFORCING STEEL BENDING DIAGRAMS

BILL OF REINFORCING STEEL FOR ONE BEAM ONLY

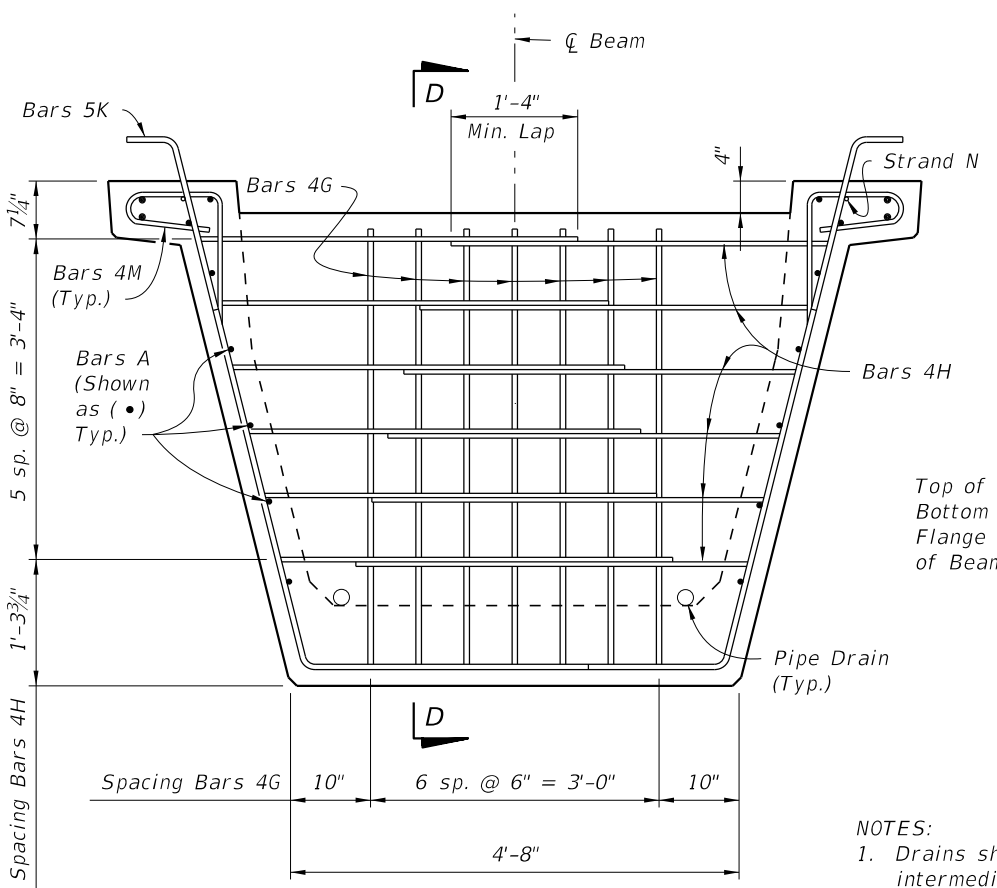
| MARK | SIZE | NO. REQD. | LENGTH |
|------|---------------|-----------|-------------|
| A1 | 6 | 4 | Dim. L - 4" |
| A2 | 4 | 12 | Dim. L - 4" |
| B | 5 | 12 | 5'-4" |
| C | 4 | 24 | 5'-5" |
| D1 | 3 | 204 | 1'-6" |
| D2 | 3 | 34 | 4'-6" |
| E | 5 | 24 | 6'-6" |
| F | 4 | 28 | 6'-6" |
| G | 4 | See Table | 5'-3" |
| H | 4 | See Table | 4'-11" |
| K | 5 | See Table | 9'-2 1/2" |
| L | 5 | 28 | 17'-8" |
| M | 4 | See Table | 3'-11" |
| N | 3/8" Ø Strand | 2 | Dim. L - 3" |



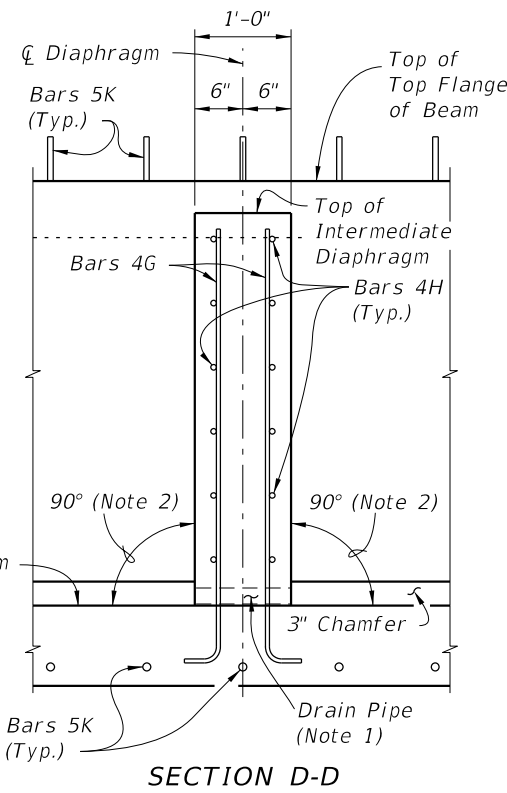
Bars 6A1, 4A2 and 3D2



TOP VIEW OF INTERMEDIATE DIAPHRAGM

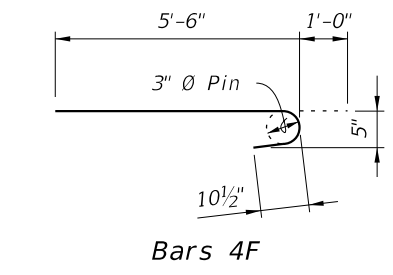


SECTION AT INTERMEDIATE DIAPHRAGM

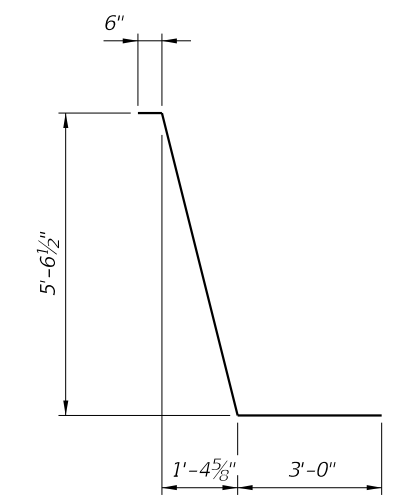


SECTION D-D

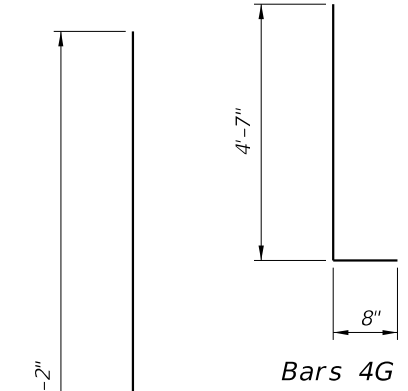
- NOTES:
1. Drains shall be placed adjacent to each web at each intermediate diaphragm (two drains per intermediate diaphragm). Drain Pipe shall be 2" Nominal Pipe Size, Schedule 80 PVC. Provide removable pipe plugs to prevent concrete entrance during beam casting. Plugs to be removed from the inside after casting.
 2. Concrete face may be sloped with a maximum 1:24 draft to facilitate formwork removal.
 3. Intermediate diaphragms must be cast and concrete release strength obtained prior to removing beam from casting bed.



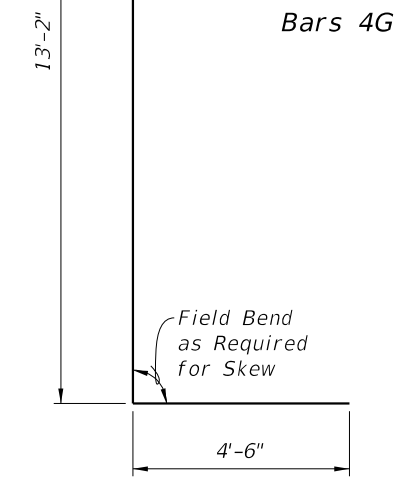
Bars 4F



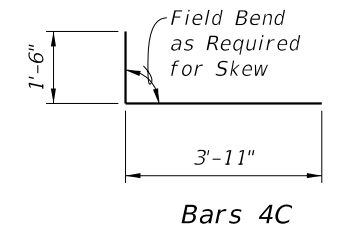
Bars 5K



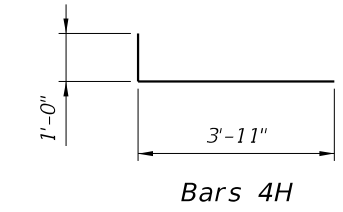
Bars 4G



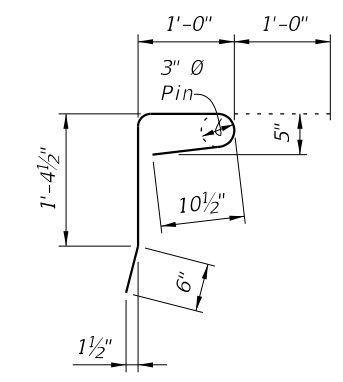
Bars 5L



Bars 4C



Bars 4H



Bars 4M

| LAST REVISION | DESCRIPTION: |
|---------------|--------------|
| 01/01/11 | REVISION |

DESCRIPTION:



FDOT DESIGN STANDARDS
FY 2012/2013

FLORIDA U 63 BEAM - STANDARD DETAILS

| INDEX NO. | SHEET NO. |
|-----------|-----------|
| 20263 | 3 |