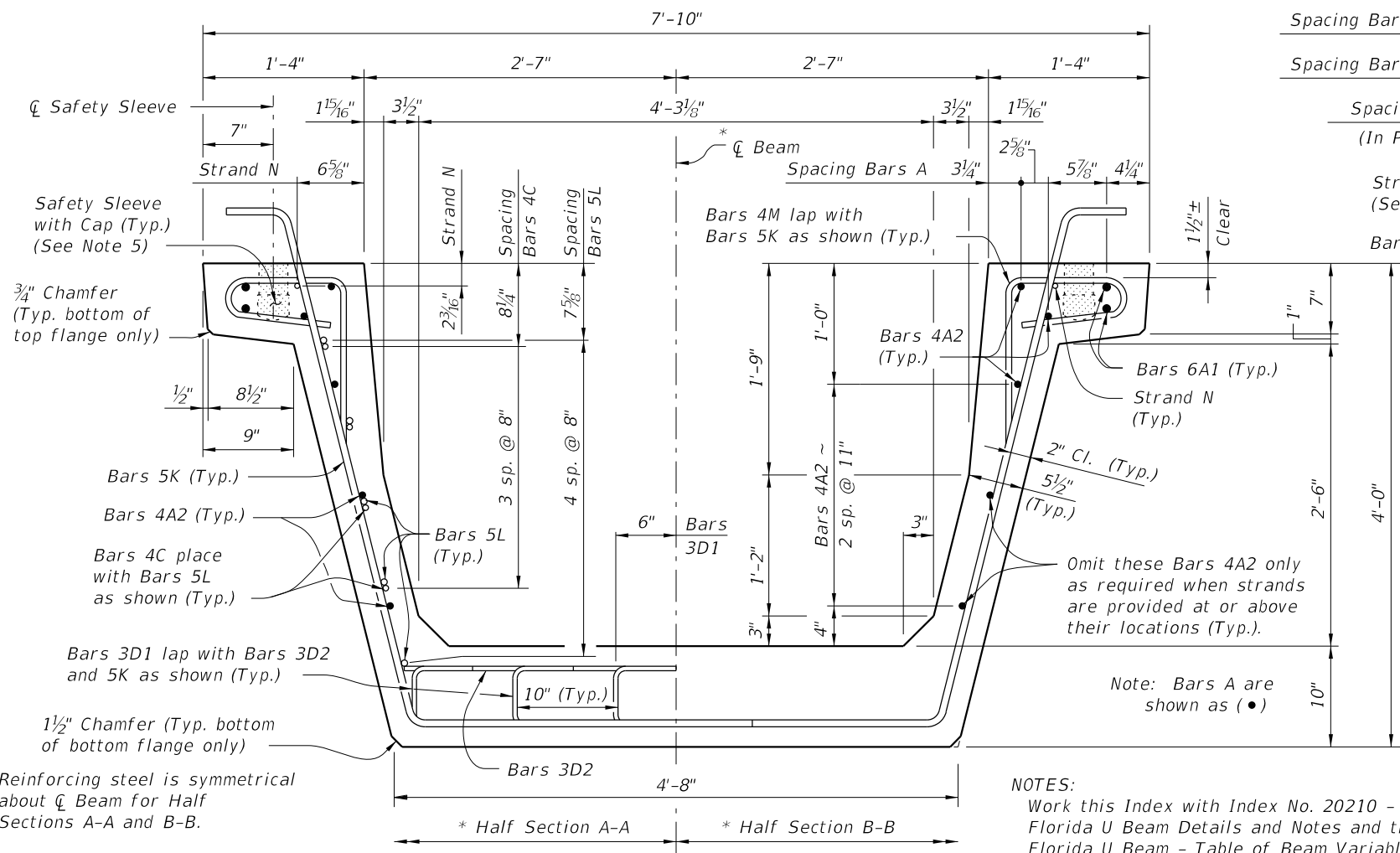


C:\projects\standards\structures\current\ready\4release\2012book_draft\20248-1of3.dgn
 12/30/2011 11:50:35 AM rd960rh

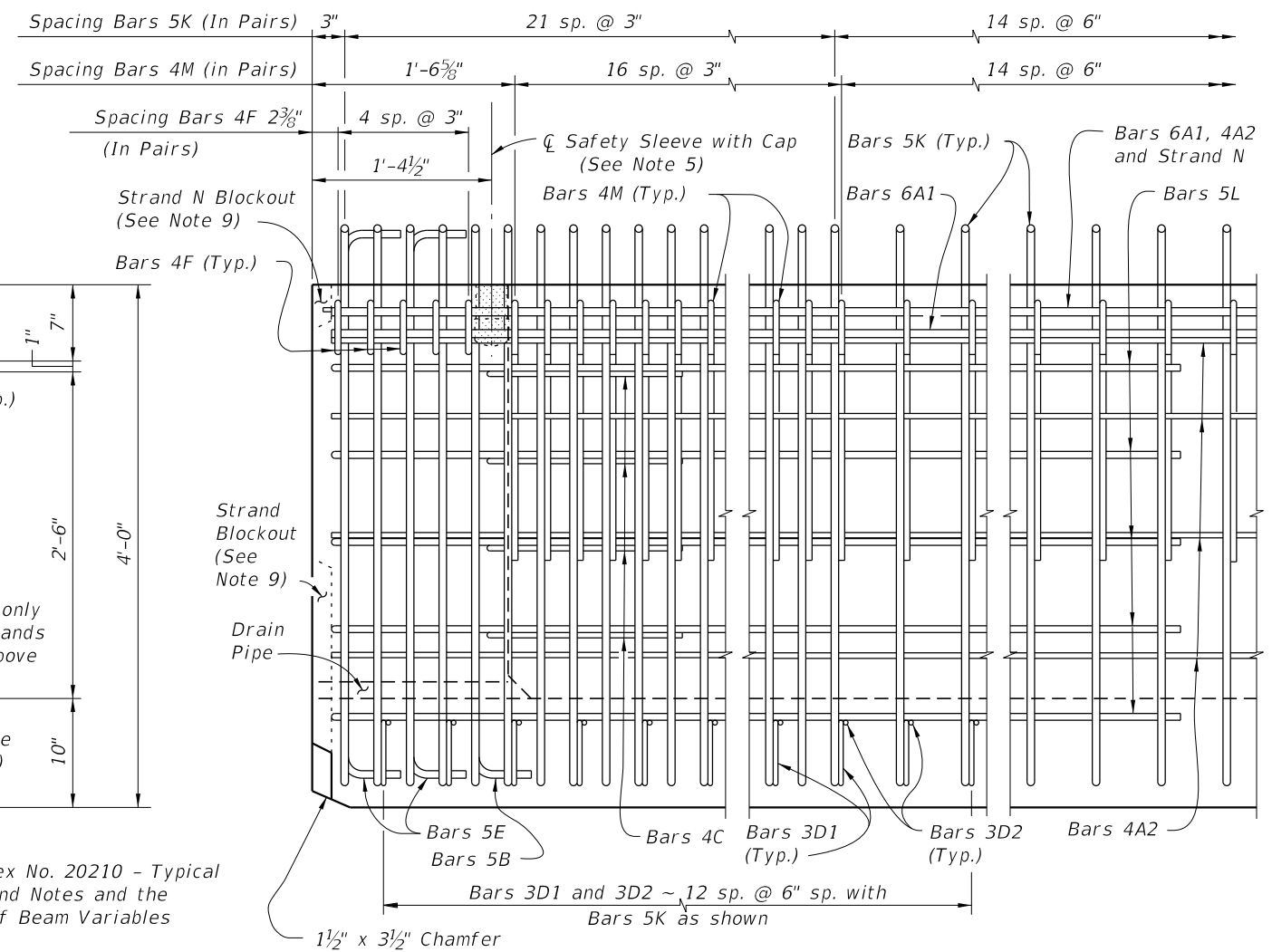


TYPICAL SECTION

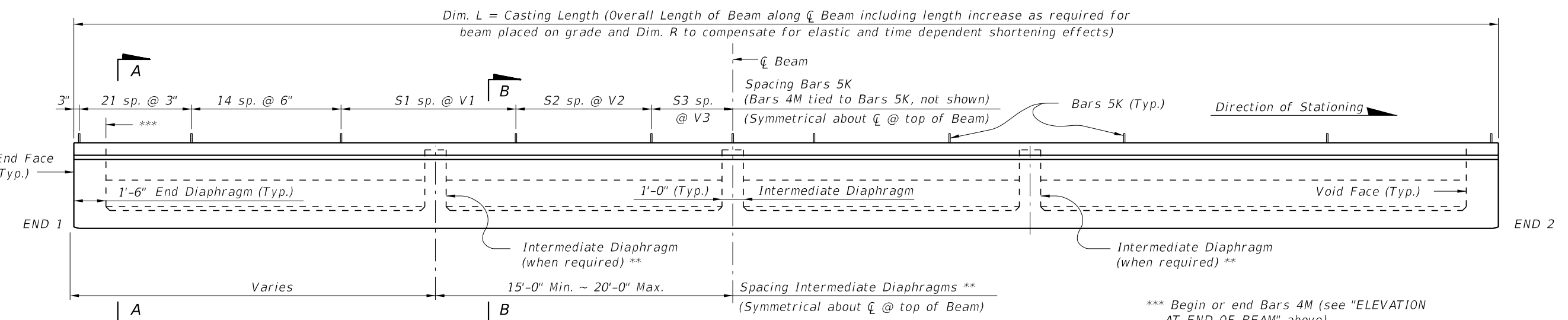
* Reinforcing steel is symmetrical about \bar{C} Beam for Half Sections A-A and B-B.

** Intermediate Diaphragms shall be provided:
 (1) - At midspan.
 (2) - At 20'-0" Max. from midspan when beam length (L) exceeds 60 Ft.

NOTES:
 Work this Index with Index No. 20210 - Typical Florida U Beam Details and Notes and the Florida U Beam - Table of Beam Variables in Structures Plans.
 For referenced notes see Index No. 20210.



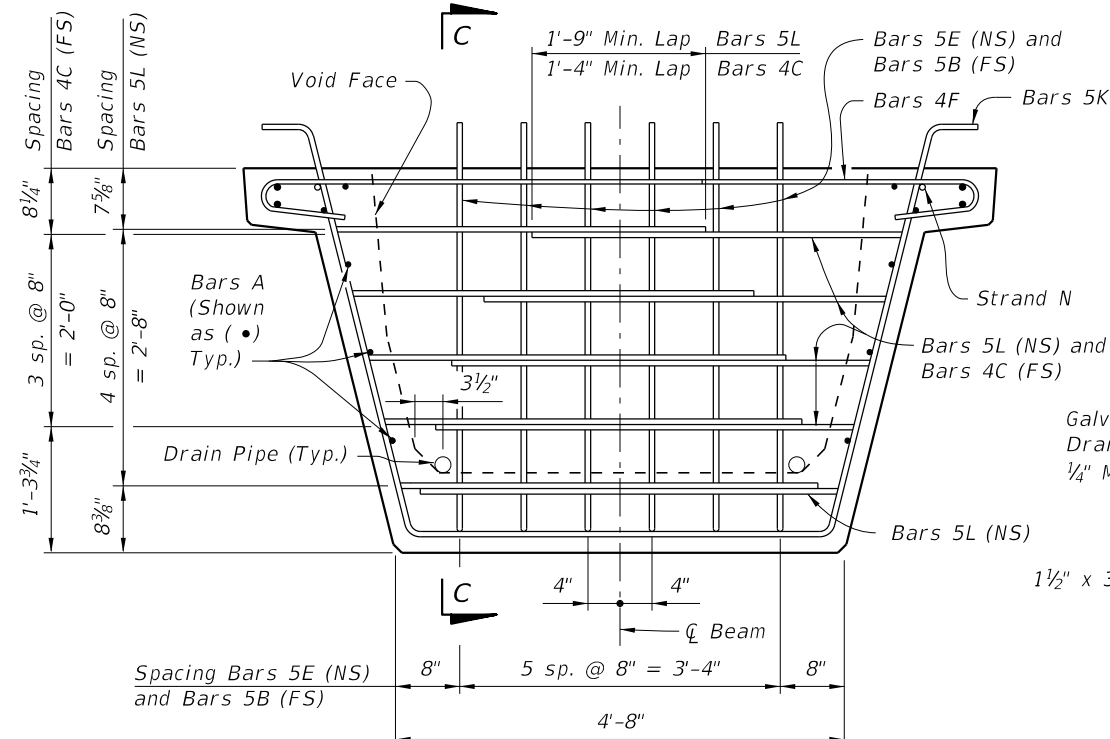
ELEVATION AT END OF BEAM



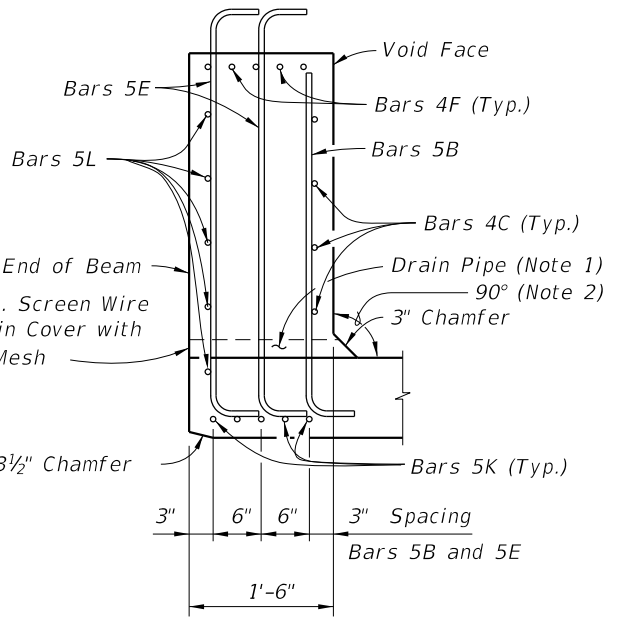
ELEVATION

LAST REVISION	REVISION	DESCRIPTION:	 FDOT DESIGN STANDARDS FY 2012/2013	FLORIDA U 48 BEAM - STANDARD DETAILS	INDEX NO.	SHEET NO.
07/01/05					20248	1

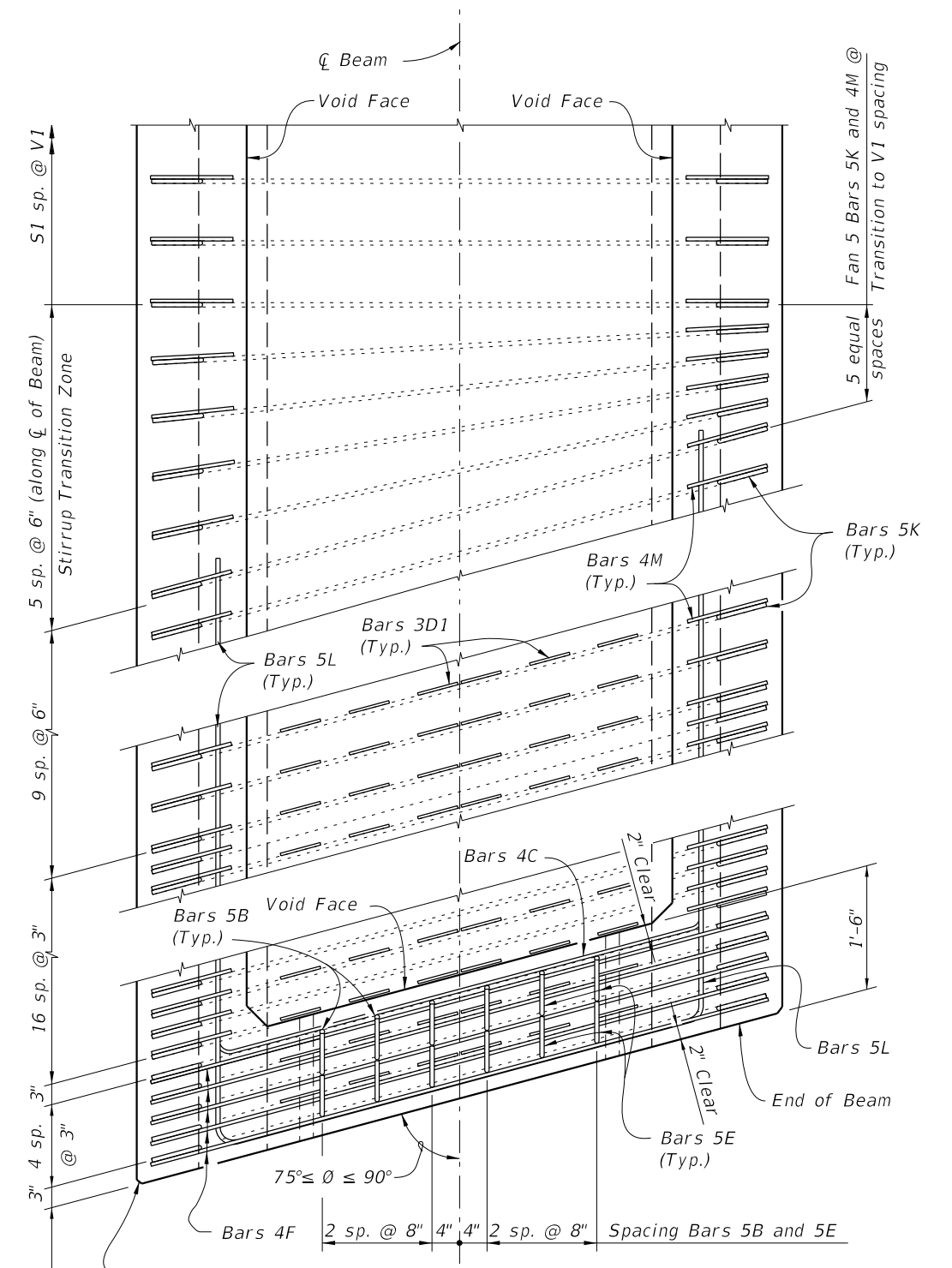
C:\projects\standards\structures\current\yeadl\4release\2012book_draft\20248-2of3.dgn
 rd960rh
 11:50:36 AM
 12/30/2011



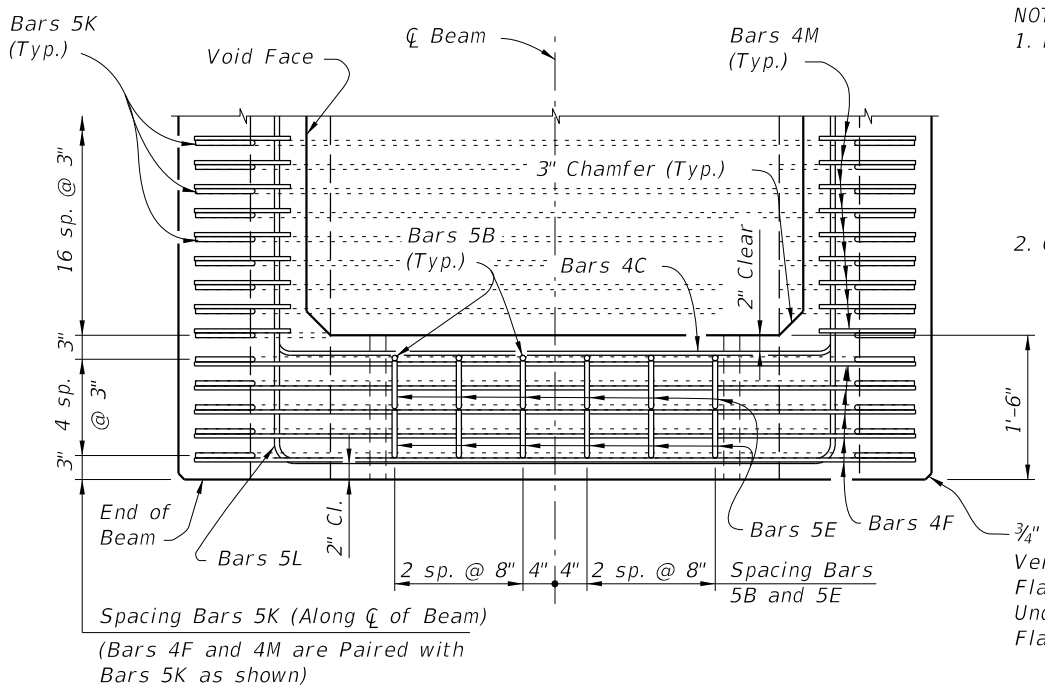
END VIEW AT END DIAPHRAGM



SECTION C-C



TOP VIEW OF SKEWED END DIAPHRAGM AND STIRRUP TRANSITION ZONE (Bars 3D2 Not Shown For Clarity)




TOP VIEW OF END DIAPHRAGM (Bars 3D1 And 3D2 Not Shown For Clarity)

- NOTES:
1. Drains shall be placed adjacent to each web at each beam end (four drains per beam). Drain Pipe shall be 2" Nominal Pipe Size, Schedule 80 PVC. Provide removable pipe plugs to prevent concrete entrance during beam casting. Plugs to be removed from the inside after casting. Galvanized screen wire shall cover the end of the pipe and bent down around the sides of the pipe, a minimum of 1" and secured prior to casting.
 2. Concrete face may be sloped with a maximum 1:24 draft to facilitate formwork removal.

Spacing Bars 5K (Along \bar{C} of Beam) (Bars 4F and 4M are Paired with Bars 5K as shown)

$\frac{3}{4}$ " Chamfer along the Vertical Face of the Top Flange and Web and Underside of the Top Flange (Typ.)

LAST REVISION	DESCRIPTION:		FDOT DESIGN STANDARDS FY 2012/2013	FLORIDA U 48 BEAM - STANDARD DETAILS	INDEX NO. 20248	SHEET NO. 2
07/01/05						

