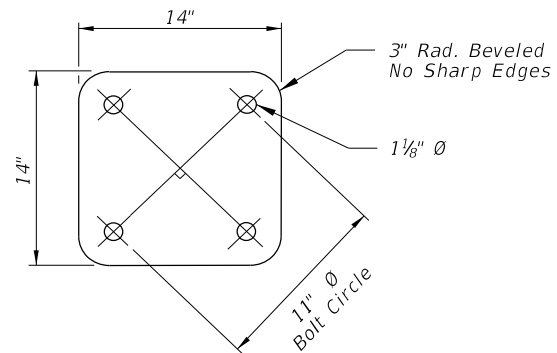
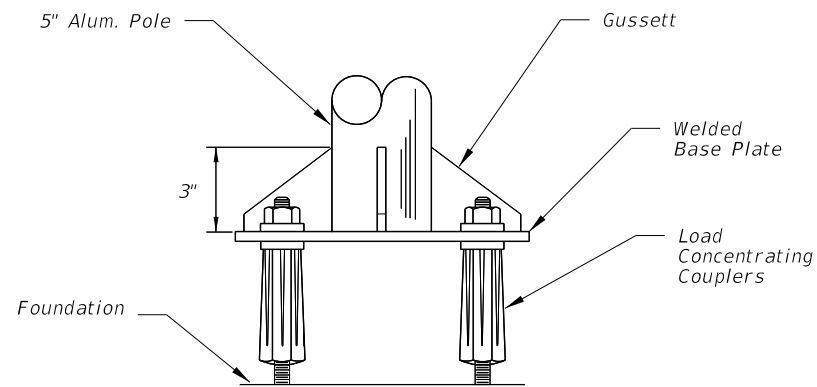


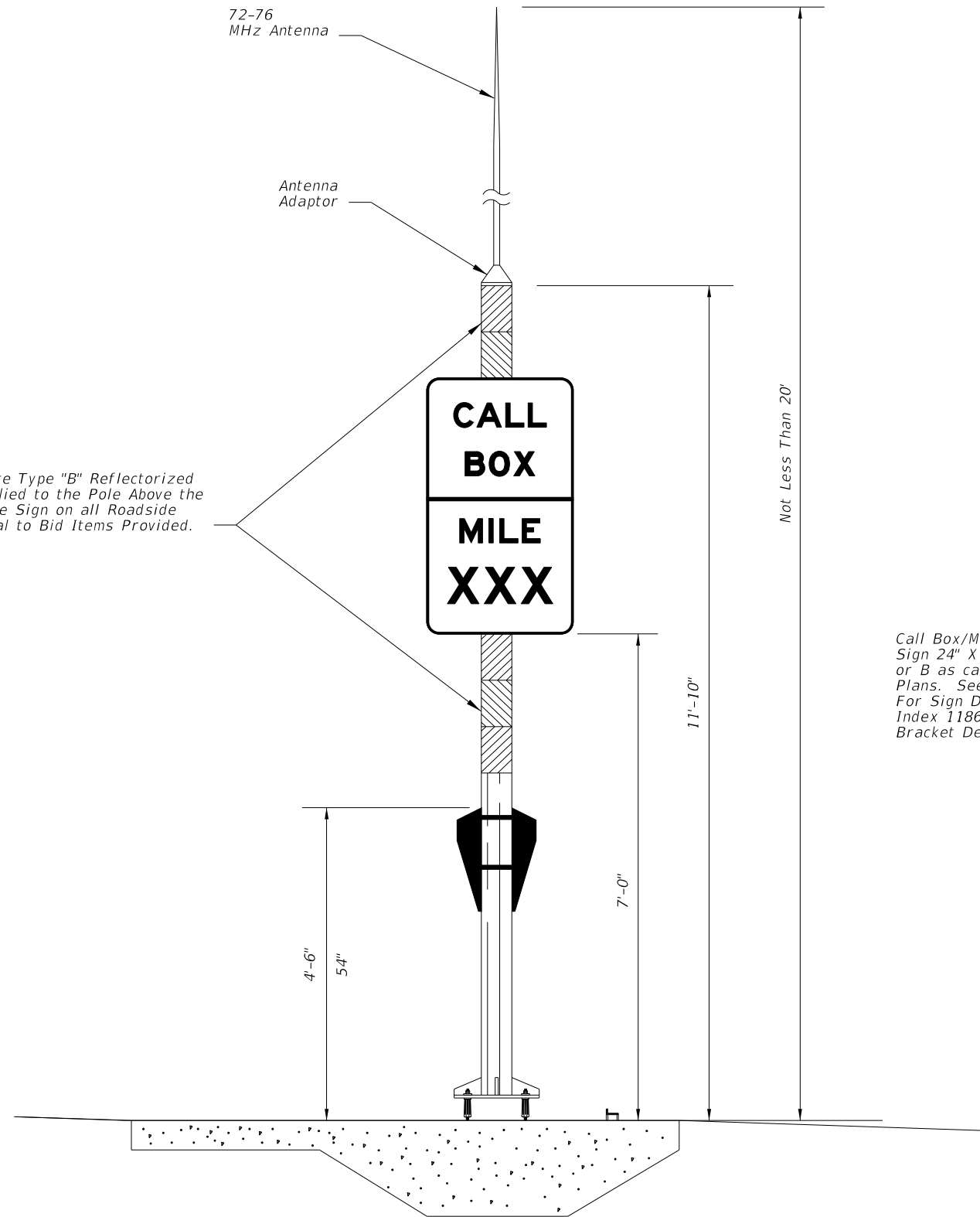
C:\projects\standards\roadway\17600-s\17600-01.dgn
 r0960/h
 11:49:15 AM
 12/30/2011



16" Wide Wrap of White Type "B" ReflectORIZED Sheeting Shall be Applied to the Pole Above the Sign and 24" Below the Sign on all Roadside Terminals as Incidental to Bid Items Provided.

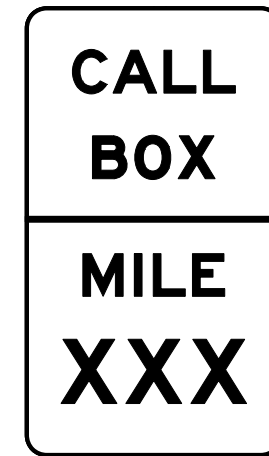


BASE PLATE & BOLT PATTERN

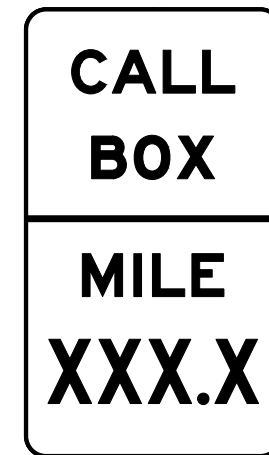


See Sheet 3 for Concrete Pad Details.

TYPICAL MOTORIST AID CALL BOX TERMINAL



FTP-63-06
SIGN A



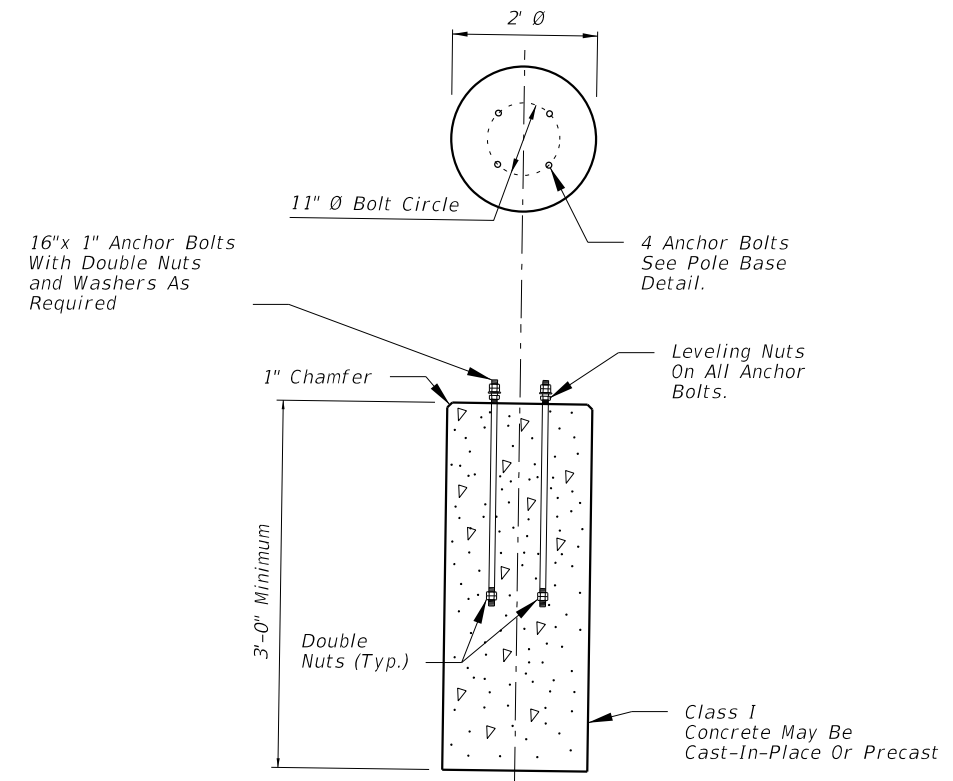
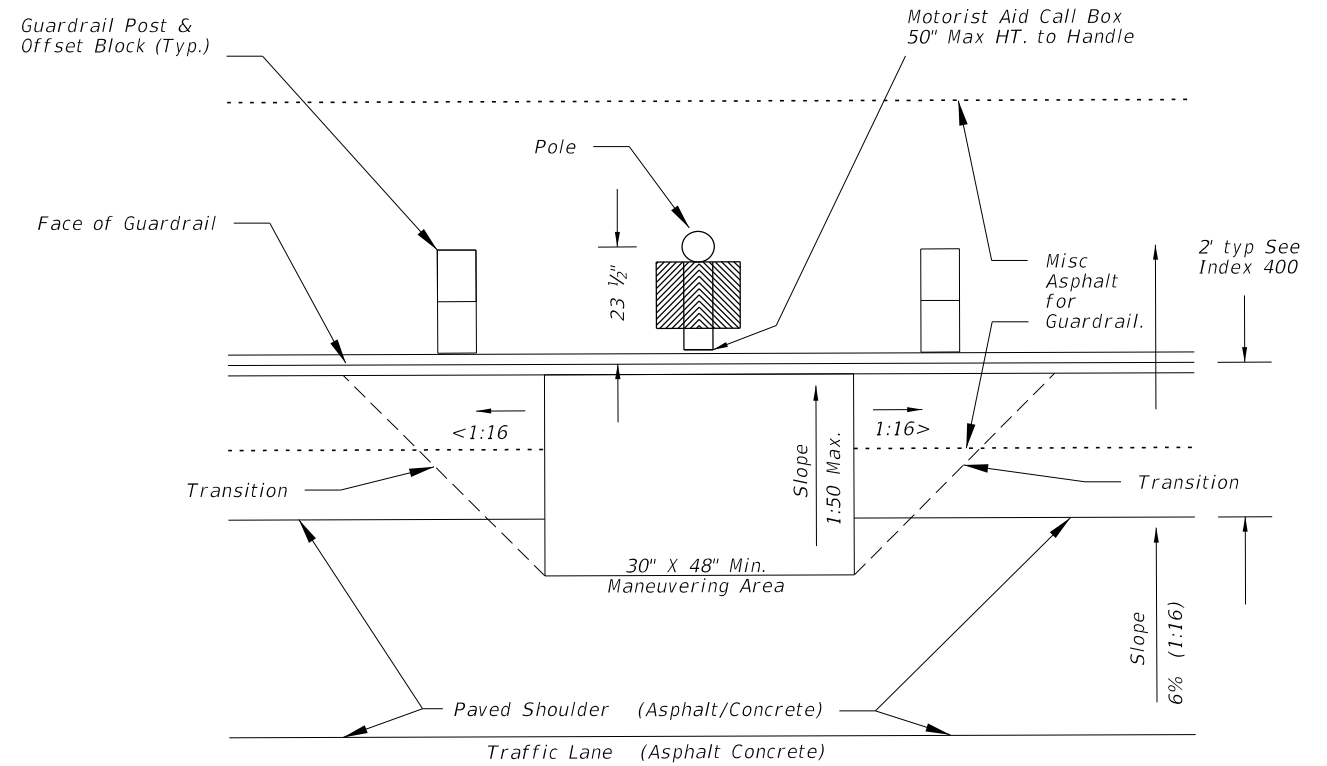
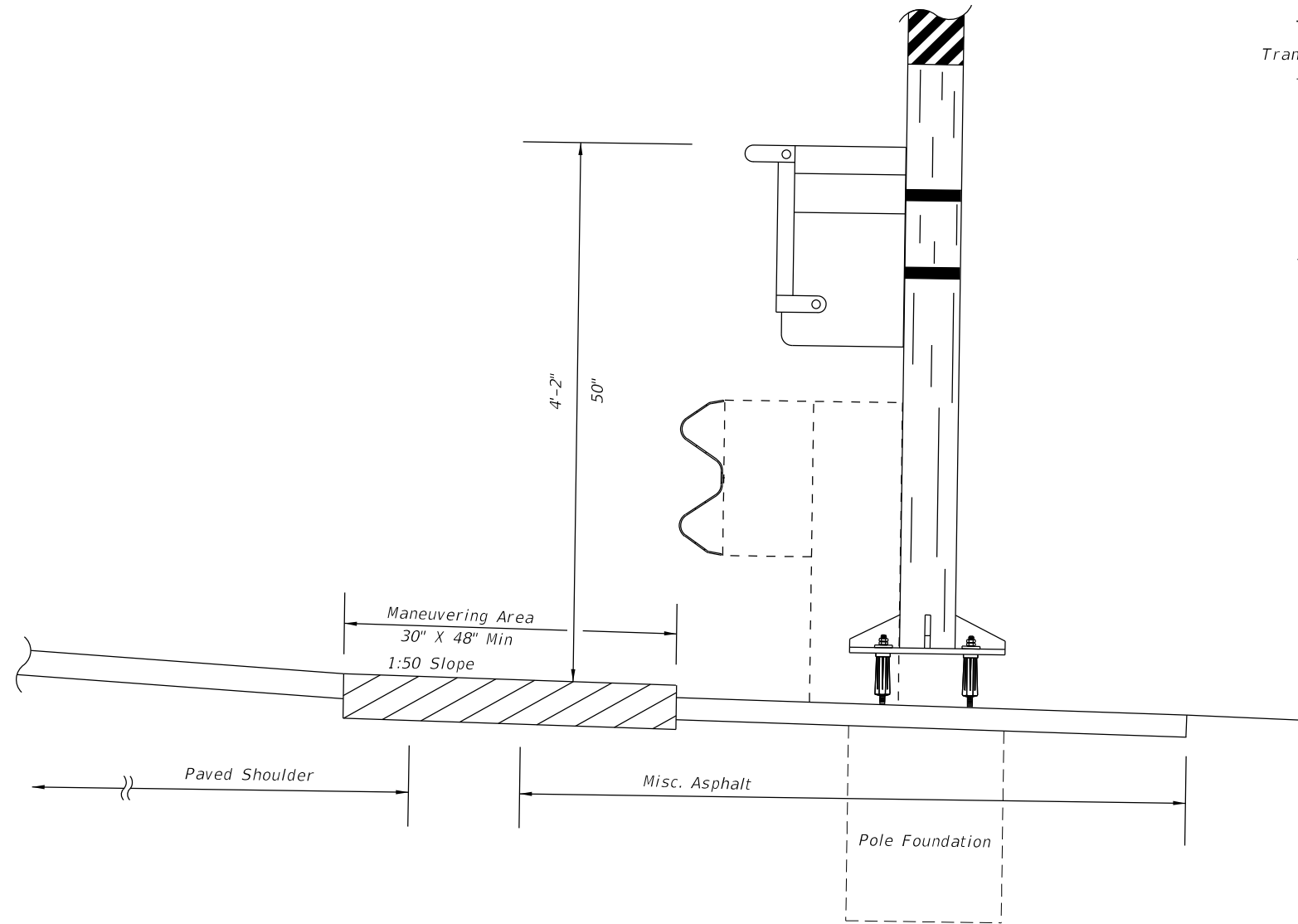
FTP-64-06
SIGN B

Call Box/Mile Marker Sign 24" X 42". Sign A or B as called for in Plans. See Index 17355 For Sign Details and Index 11860 for Sign Bracket Details.

LAST REVISION 07/01/10	DESCRIPTION:	 FDOT DESIGN STANDARDS FY 2012/2013	MOTORIST AID CALL BOX	INDEX NO. 17600	SHEET NO. 1
REVISION					

EXISTING PAVEMENT INSTALLATION
 Remove existing pavement minimum 1" depth throughout transition and maneuvering area, replace with misc asphalt.

NEW CONSTRUCTION
 Hand work final shoulder pavement lift to plan dimensions.



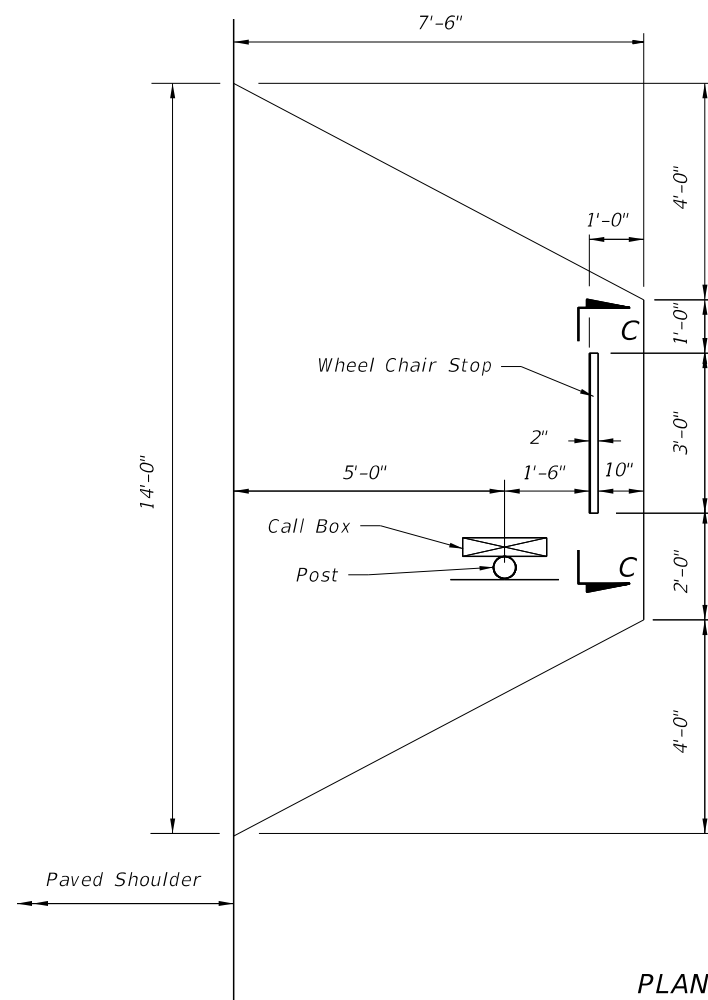
**MOTORIST AID CALL BOX POLE FOUNDATION
 TO BE USED ONLY BEHIND GUARDRAIL**

CALL BOX BEHIND GUARDRAIL

12/30/2011 11:49:15 AM r0960rh C:\projects\standards\roadway\17600-s\17600-02.dgn

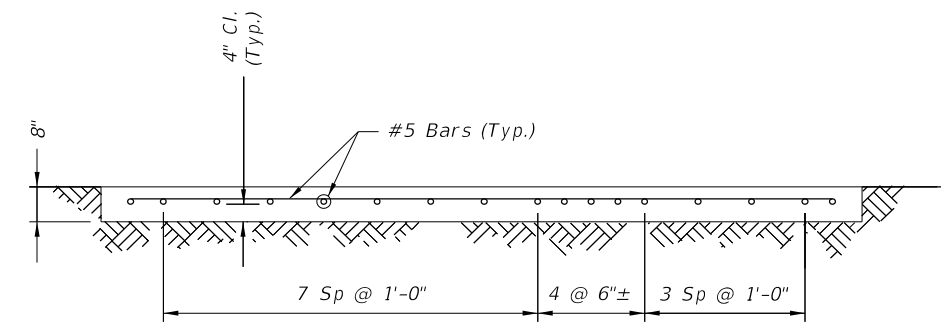
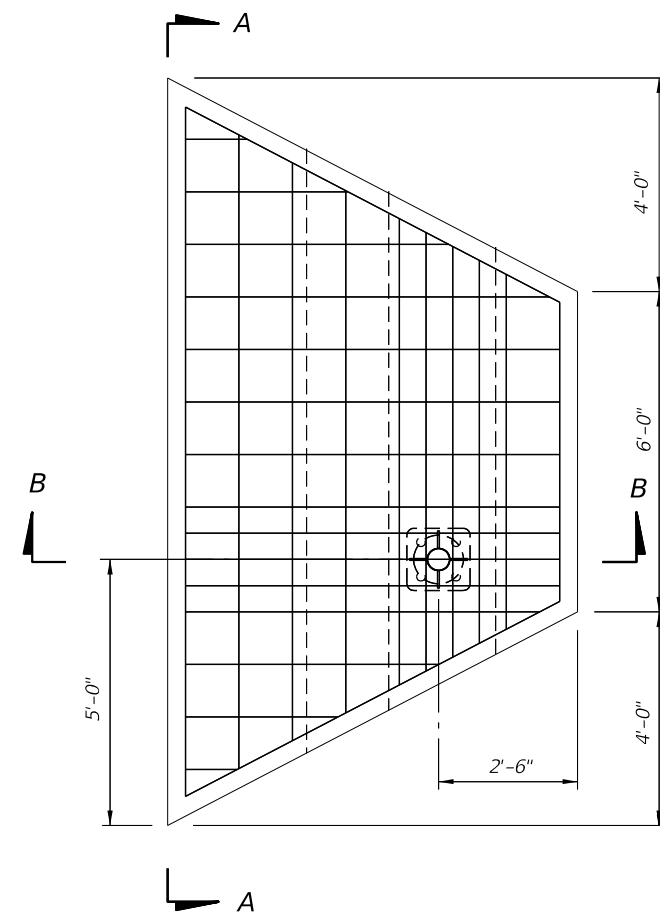
LAST REVISION	REVISION	DESCRIPTION:	 FDOT DESIGN STANDARDS FY 2012/2013	MOTORIST AID CALL BOX	INDEX NO.	SHEET NO.
07/01/09					17600	2

C:\projects\standards\roadway\17600-s\17600-03.dgn
 r0960/h
 11:49:16 AM
 12/30/2011



Call Box Attachment To Slab
As Per Manufacturer's Recommendation.

PLAN



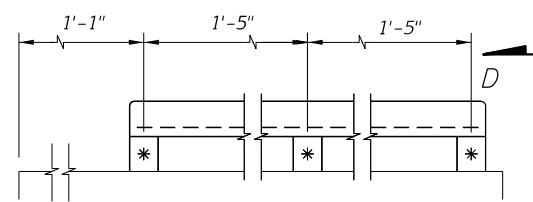
SECTION A-A

MOTORIST AID CALL BOX CONCRETE PAD QUANTITIES

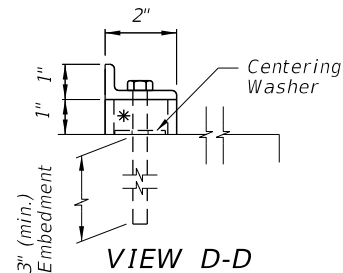
Concrete : 3.5 c.y. (each)
Reinforcing Steel : 243 lb (each)

GENERAL NOTES

1. Design Specifications: AASHTO Standard Specifications For Highway Bridges (Current Edition and approved revisions thereto).
2. Concrete: Concrete strength shall be Class I ($f'c=3,000$ psi).
3. Reinforcing Steel: Reinforcing Steel shall conform to ASTM A615, Grade 60.
4. Payment: Concrete Pad and Foundation shall be included in the contract unit price of call box assembly or terminal. It shall also include all labor, materials, and installation of embedded breakaway device sleeves, and miscellaneous galvanized steel for wheel chair stop and attachments.
5. Breakaway Device shall be paid for under Call Box Assembly.



SECTION C-C



VIEW D-D

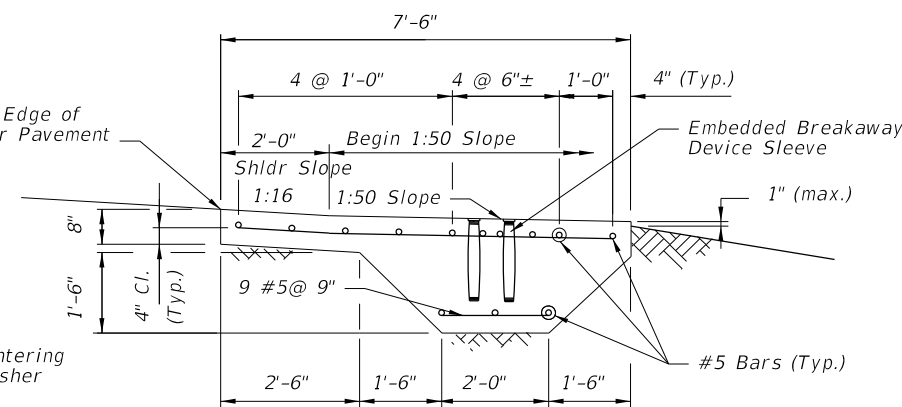
2" x 1" x 1/4" Galv. Angle And
3-3/8" x 5" Galvanized Steel Expansion
Anchor Bolt With 3" Min. Embedment

* 1 1/2" x 1" High
Galvanized Steel Pipe Spacer

WHEEL CHAIR STOP DETAIL

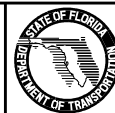
PLAN

Outside Edge of
Shoulder Pavement



SECTION B-B

LAST REVISION	DESCRIPTION:
07/01/09	



FDOT DESIGN STANDARDS
FY 2012/2013

MOTORIST AID CALL BOX

INDEX NO.	SHEET NO.
17600	3