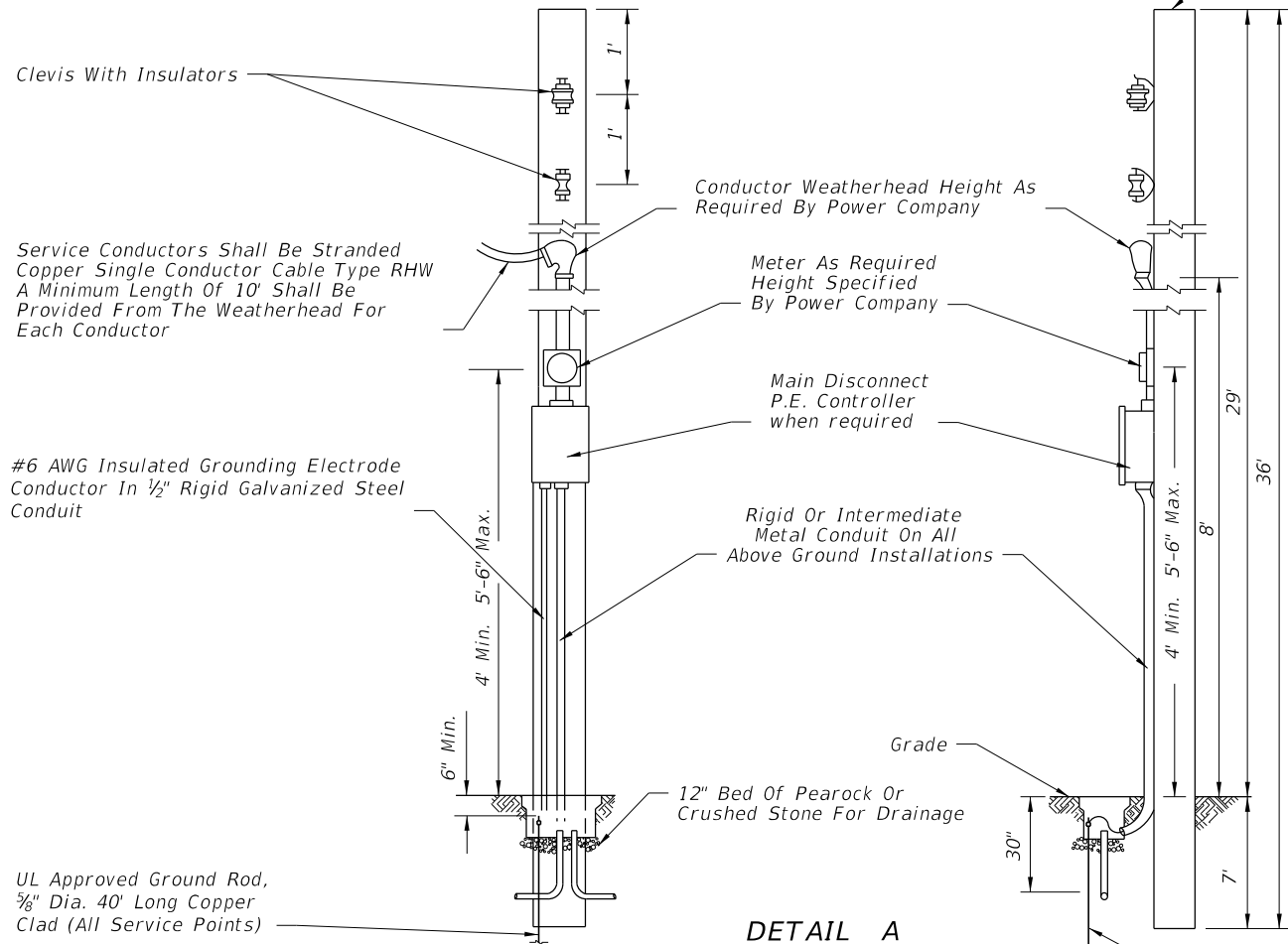


NOTE :
 It shall be the contractors responsibility to provide a complete service assembly as per the plans and service specifications. The service installation shall meet the requirements of the national electric code and applicable local codes. Shop drawings are not required for service equipment, unless noted in the plans.

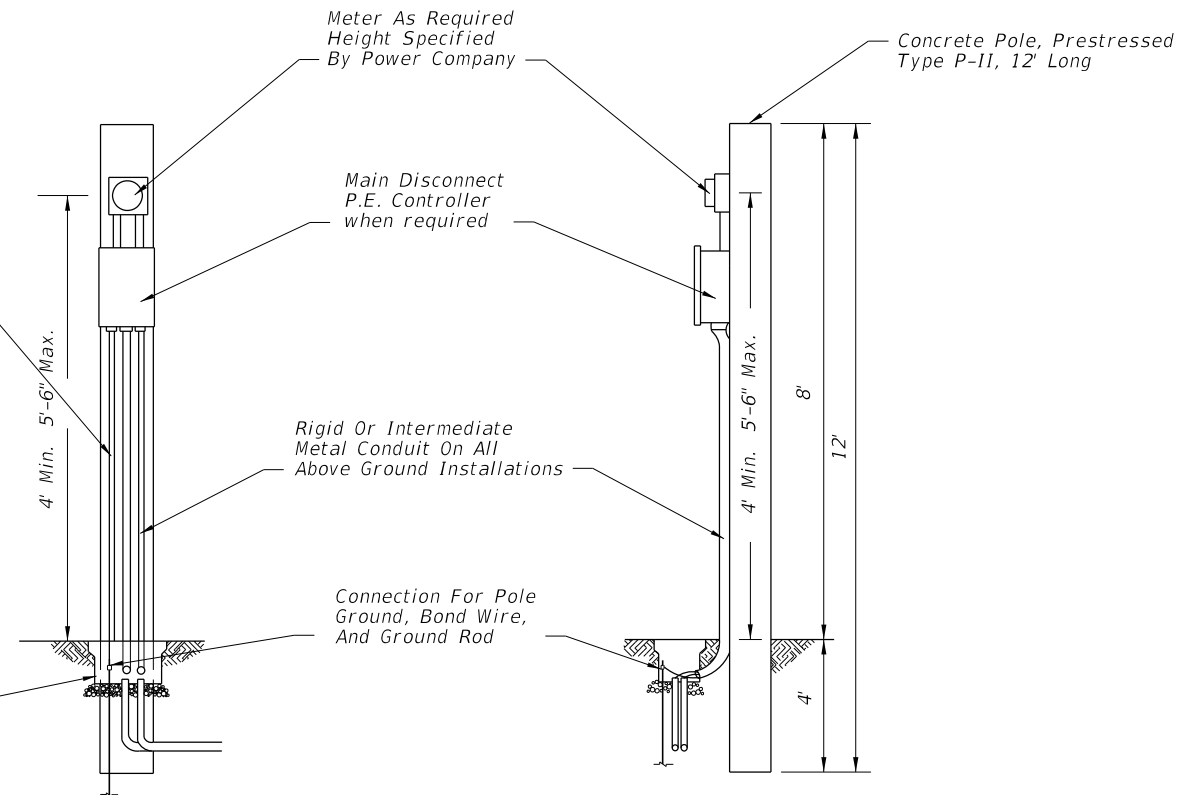


DETAIL A
 AERIAL FEED

Concrete Pole Prestressed
 Type P-II, 36' Long

#6 AWG Insulated
 Grounding Electrode Conductor
 In 1/2" Rigid
 Galvanized Steel Conduit

U.L. Approved Ground Rod,
 5/8" Dia. 40' Long Copper
 Clad (All Service Points)



DETAIL B

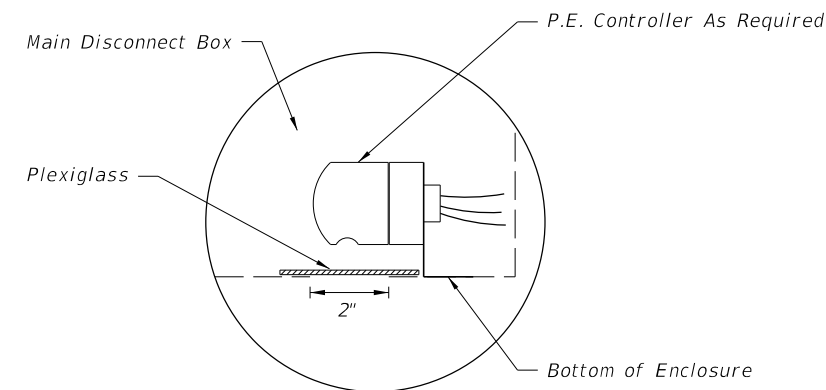
UNDERGROUND FEED

SERVICE SPECIFICATIONS

1. The main disconnect shall be NEMA 3R, pole mounted.
2. The enclosure door shall be lockable by padlock and four keys provided to the maintaining agency. The door shall have a minimum of three hinges and be latchable. No screws to be used to attach door.
3. 480 Volt minimum rating bolt-in type breakers shall be used.
4. Busbar to be copper coated and have a minimum rating of 100 amps. When main breaker exceeds 100 amps busbar to match breaker amperage.
5. Locate Contactor, Transformer, P.E. Controller, and H.O.A. Switch inside enclosure. The enclosure to be sized to accommodate as many breakers as called for and all other service equipment.
6. The enclosure to be rigidly attached to the pole face.
7. A 600 Volt lightning protector shall be wired inside the enclosure.
8. A main breaker is required in all service panels with 2 or more feeder breakers.
9. All service equipment shall be U. L. approved.

NOTES:

1. Photo Electric Control as required.
2. All neutral wires to have White insulation, do not use White or Green insulated wires for ungrounded conductors.
3. A Pull Box is required at each service point.



Cut a 2" hole in the bottom of the Main Disconnect Box for the operation and mounting of the P.E. controller. Use plexiglass and a clear silicone sealant to cover hole, install P.E. Controller.

PHOTO ELECTRIC CONTROLLER DETAIL

C:\projects\standards\roadway\17500-s\17504-01.dgn
 r19960/h
 11:49:06 AM
 12/30/2011

LAST REVISION 11/18/09	REVISION	DESCRIPTION:	 FDOT DESIGN STANDARDS FY 2012/2013	SERVICE POINT DETAILS	INDEX NO. 17504	SHEET NO. 1