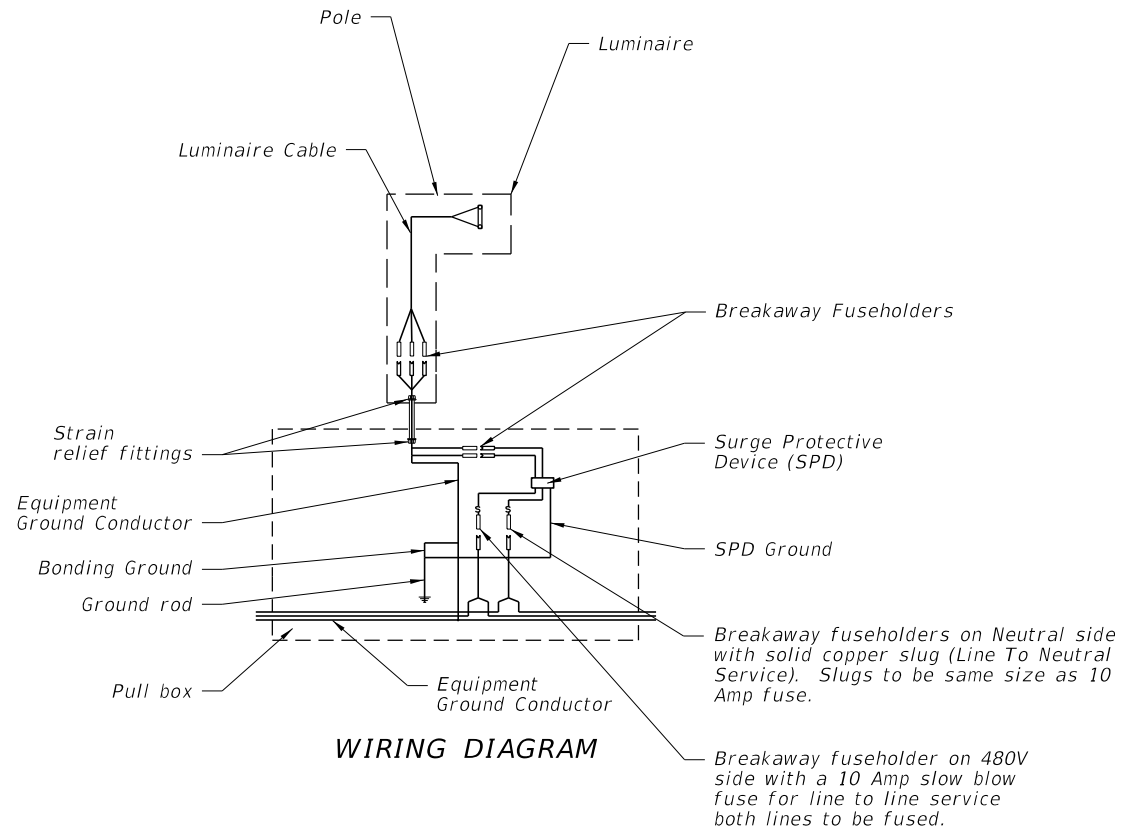


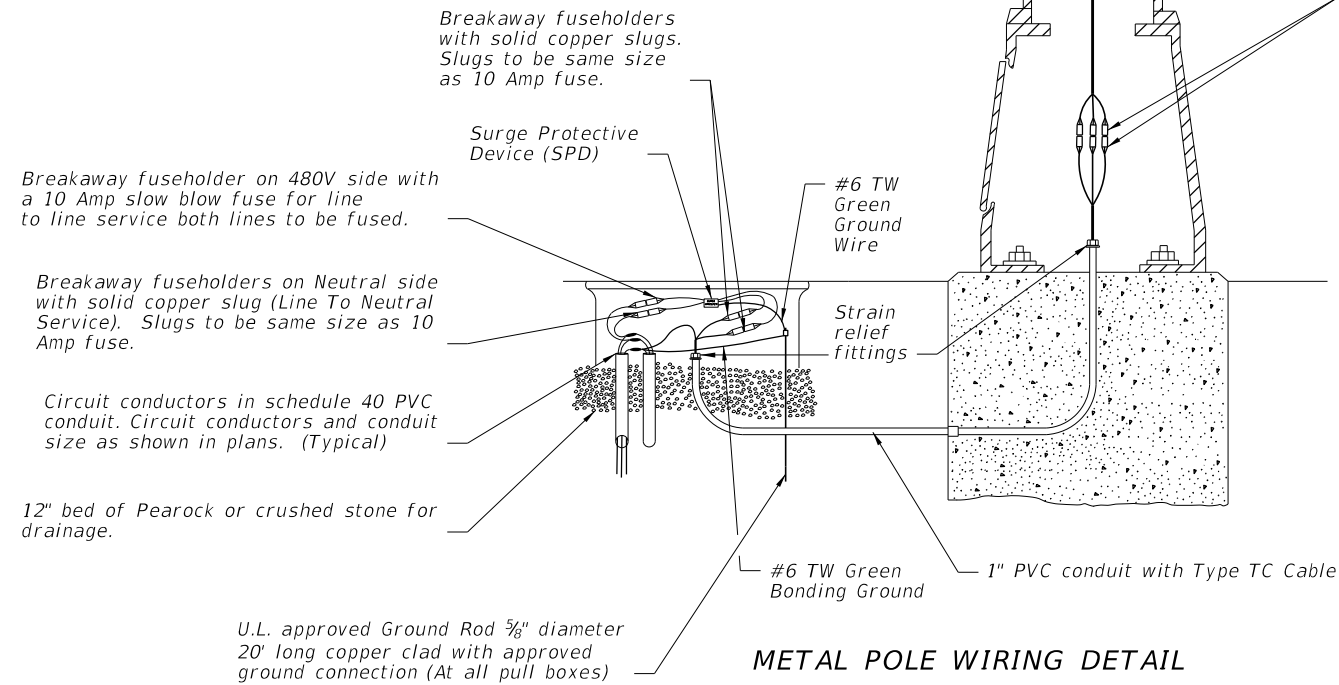
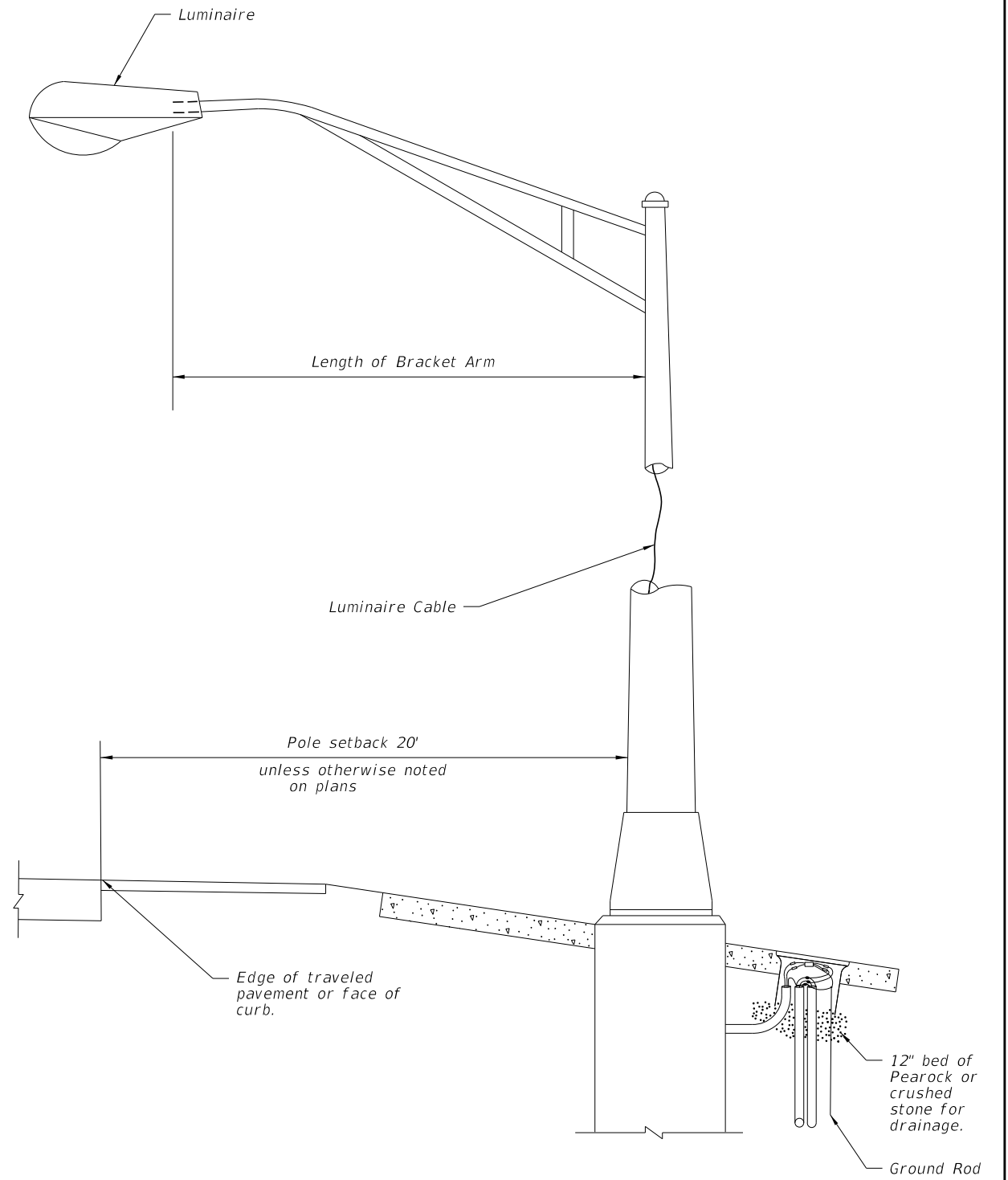
C:\projects\standards\roadway\17500-s\17500-01.dgn  
 r1960/h  
 11:49:00 AM  
 12/30/2011

NOTES:

- Barrier wall or bridge mounted poles: The wiring shall be in accordance with Section 992 of the Standard Specifications.



Provide cable length to remove fuseholders from transformer base, pole base or pullbox for maintenance. Remove slack from the luminaire cable to provide tension on the fuseholders if the pole breaks away. Pull excess cable into pull box tighten strain relief fittings or cable clamps at both ends of conduit to prevent cable from slipping.



METAL POLE DETAIL

METAL POLE WIRING DETAIL

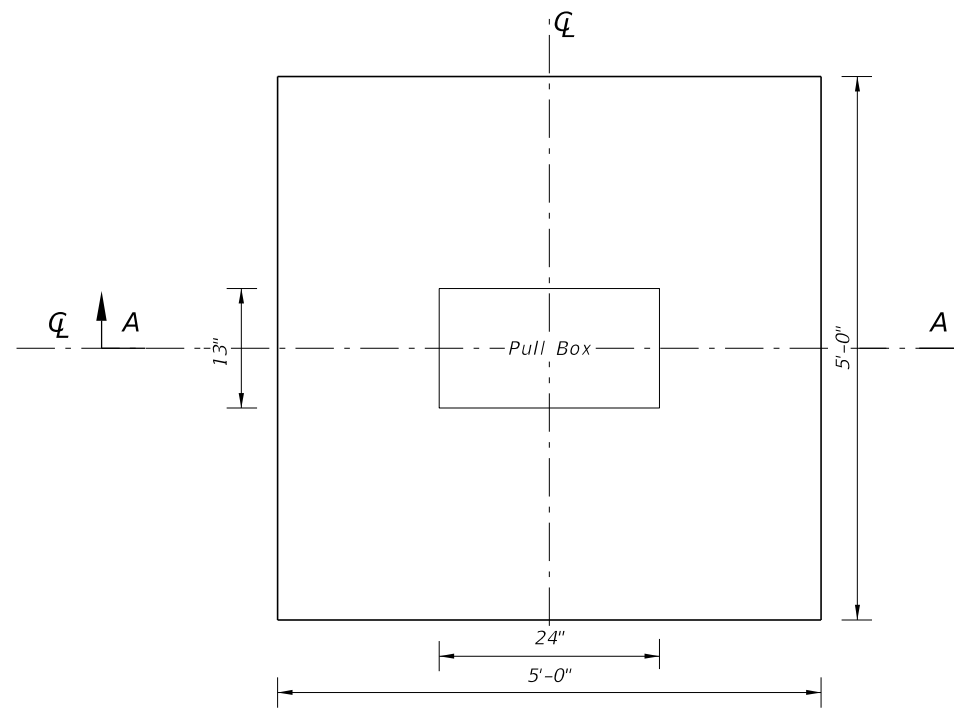
WIRING DETAILS

LAST REVISION	DESCRIPTION:	 <b>FDOT DESIGN STANDARDS</b> FY 2012/2013	<b>CONVENTIONAL LIGHTING</b>	INDEX NO.	SHEET NO.
01/01/12				17500	1

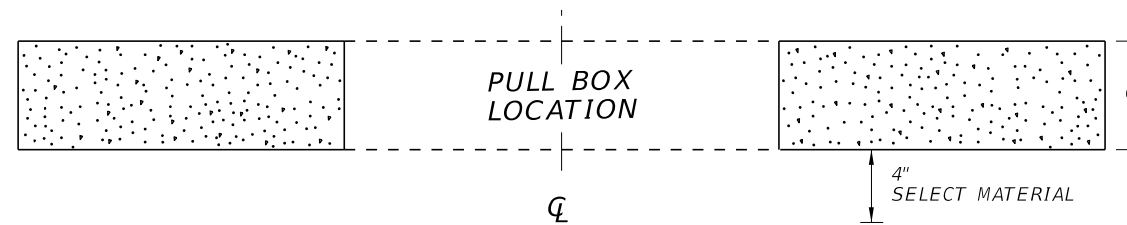
C:\projects\standards\roadway\17500-s\17500-02.dgn  
 r0960/h  
 11:49:00 AM  
 12/30/2011

**NOTES:**

1. Use compacted select material in accordance with Index 505.
2. Concrete shall be Class NS with a minimum strength at 28 days of  $f'c=2.5$  ksi.
3. Outside edge of slab shall be cast against formwork.
4. The pull box shown is 13" x 24"; others approved under Section 635 of the Standard Specifications may be used.
5. Slabs to be placed around all Poles and Pull Boxes in rural locations. In urban areas or where space is limited slab dimensions may be adjusted as shown in the plans.
6. Concrete for slabs around pull boxes shall be included in the price of pull box.




SLAB DIMENSIONS



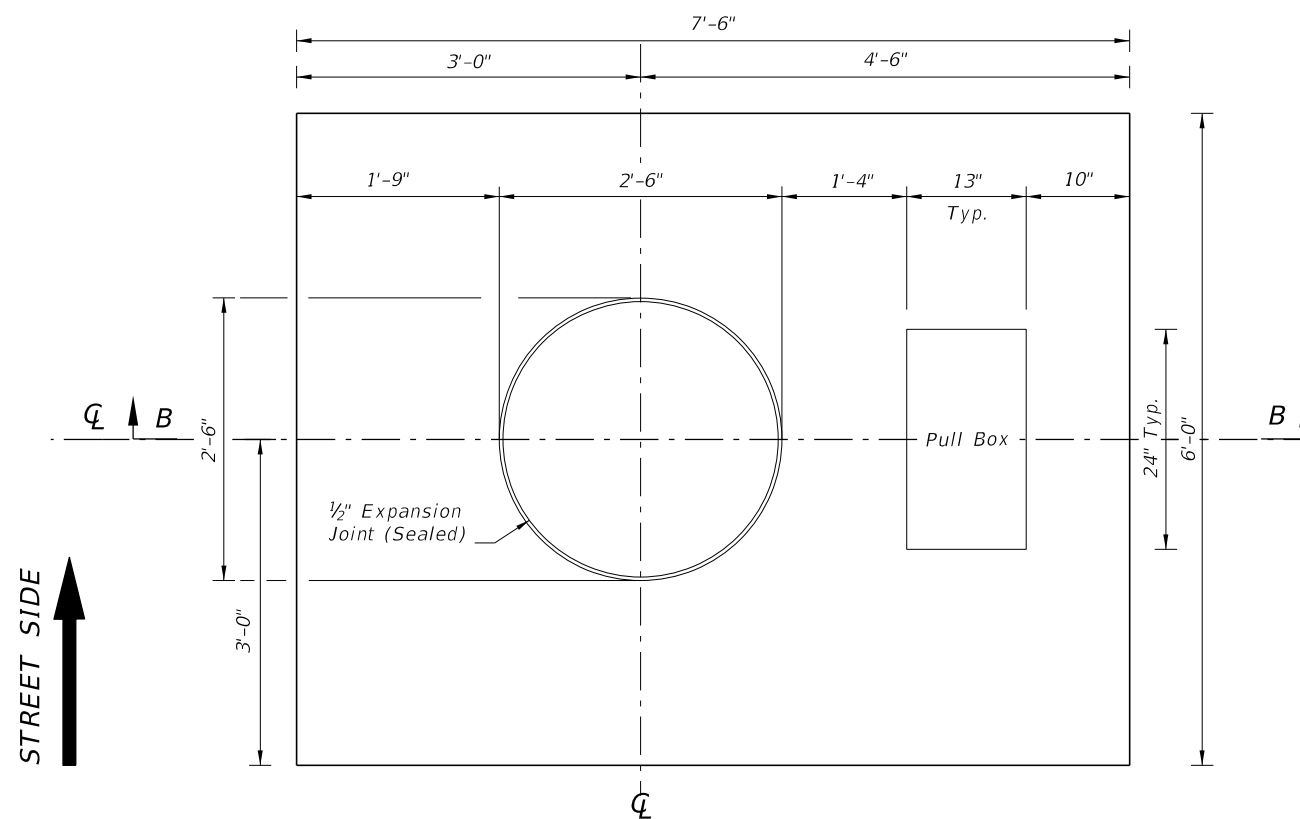
SECTION A-A

SLAB DETAILS FOR INTERMEDIATE PULLBOX LOCATIONS

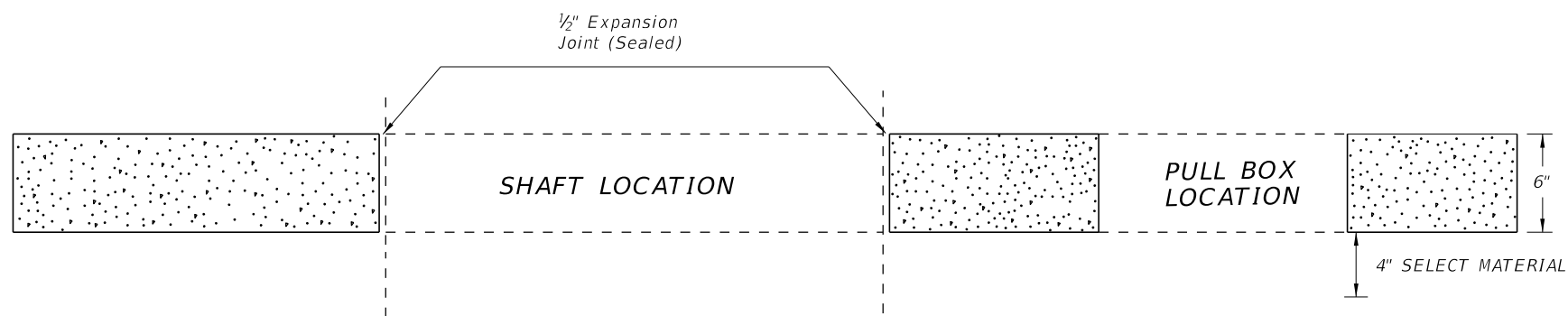
LAST REVISION	01/01/12	DESCRIPTION:	 FDOT DESIGN STANDARDS FY 2012/2013	CONVENTIONAL LIGHTING	INDEX NO.	SHEET NO.
					17500	2

**NOTES:**

1. Use compacted select material in accordance with Index 505.
2. Concrete shall be Class NS with a minimum strength at 28 days of  $f'c=2.5$  ksi.
3. Outside edge of slab shall be cast against formwork.
4. The pull box shown is 13" x 24"; others approved under Section 635 of the Standard Specifications may be used.
5. Slabs to be placed around all Poles and Pull Boxes. In urban areas or where space is limited slab dimensions may be adjusted as shown in the plans.
6. Concrete for slabs around poles and pull boxes shall be included in the price of pole or pull box.
7. The 1/2" thick expansion joint between the pole shaft and slab shall be sealed with a hot poured elastic joint sealer.



SLAB DIMENSIONS



SECTION B-B

SLAB DETAILS  
FOR POLE AND PULL BOX LOCATIONS

C:\projects\standards\roadway\17500-s\17500-03.dgn r0960/h 11:49:01 AM 12/30/2011

LAST REVISION	01/01/12	DESCRIPTION:	 <b>FDOT DESIGN STANDARDS FY 2012/2013</b>	<b>CONVENTIONAL LIGHTING</b>	INDEX NO.	SHEET NO.
					17500	3