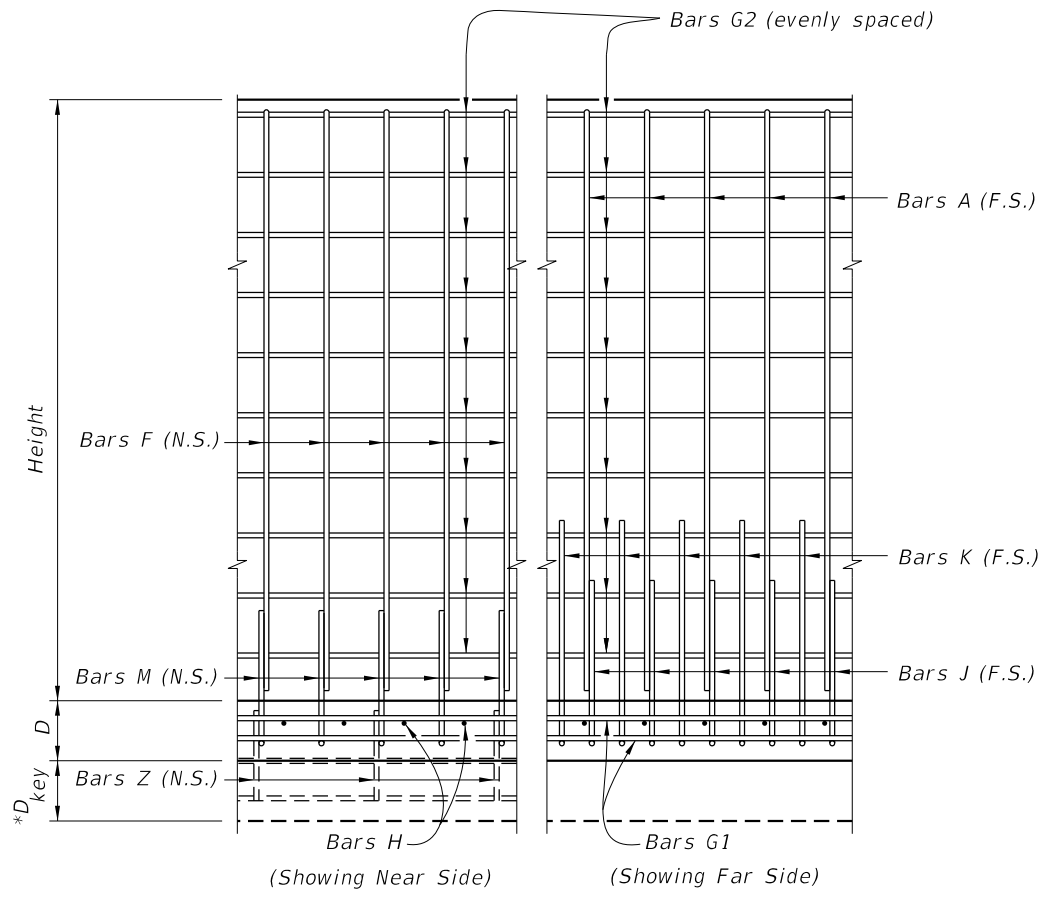


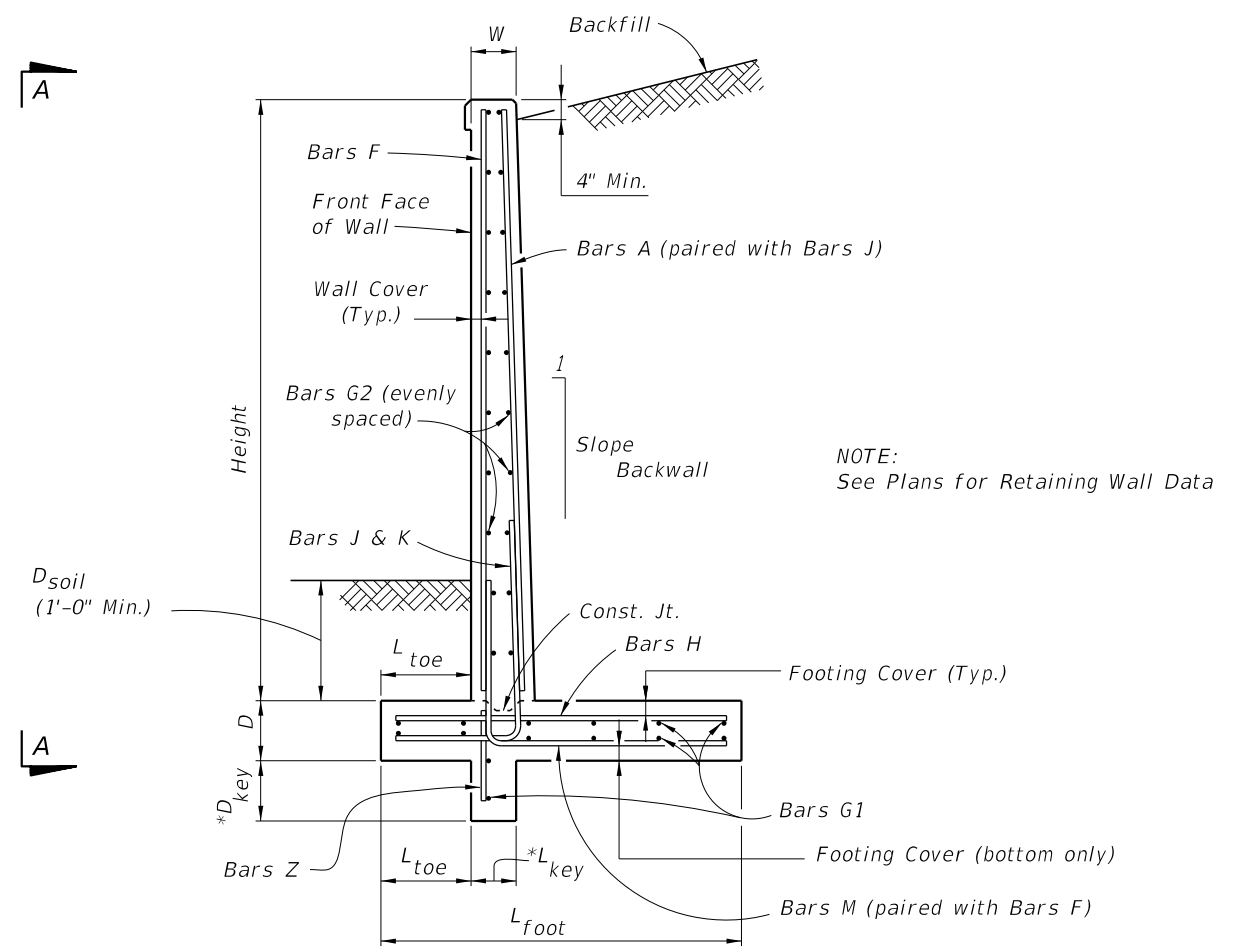
C:\projects\standards\structures\current\ready\4release\2012book\_draft\06010-1of2.dgn  
 rd960rh  
 11:47:35 AM  
 12/30/2011



**VIEW A-A**  
(Shear key shown dashed)

**NOTES**

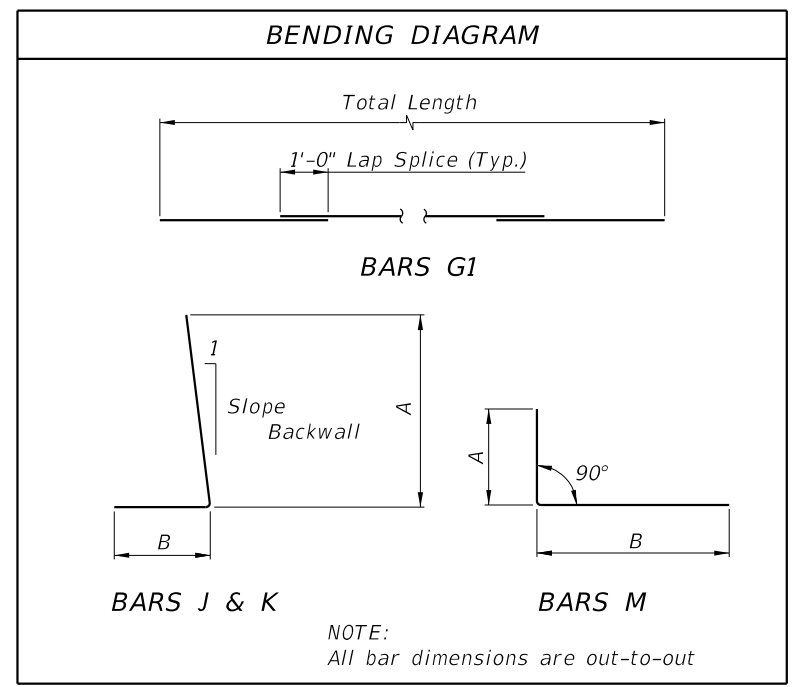
- DESIGN SPECIFICATIONS:**  
Design according to FDOT Structures Manual (current edition).
- MATERIALS:**  
All reinforcing steel shall conform to ASTM A615 Grade 60.
- SURFACE FINISH:**  
A Class 5 Applied Finish Coating shall be applied to the top of the wall and the exposed face above ground line.
- ARCHITECTURAL SURFACE TEXTURES:**  
Alternate Architectural Surface Textures may be substituted for the Striated Pattern shown when approved by the Engineer. Concrete required for Architectural Surface Textures is not included in the quantities.
- TRAFFIC RAILING BARRIER:**  
If there is a Traffic Railing Barrier on the wall, Wall Joints and Barrier V-Grooves shall align and Wall Expansion Joints and Barrier Open Joints shall align.
- FOUNDATION:** Prepare the soil below the footing in accordance with the requirements for spread footings in Specification Section 455.
- PAYMENT:**  
All Retaining Wall costs, including all miscellaneous costs, shall be paid for at the unit contract price for either Class II, III or IV Concrete (Retaining Walls) (CY) and Reinforcing Steel (Retaining Walls) (lbs.). Retaining Wall quantities shall not include concrete nor reinforcing steel for Traffic Railings/Junction Slab. Traffic Railing/Junction Slab shall be paid for under Concrete Traffic Railing Barrier with Junction Slab.



NOTE:  
See Plans for Retaining Wall Data

\* Shear Key is required only when specified by the Engineer

**TYPICAL SECTION**

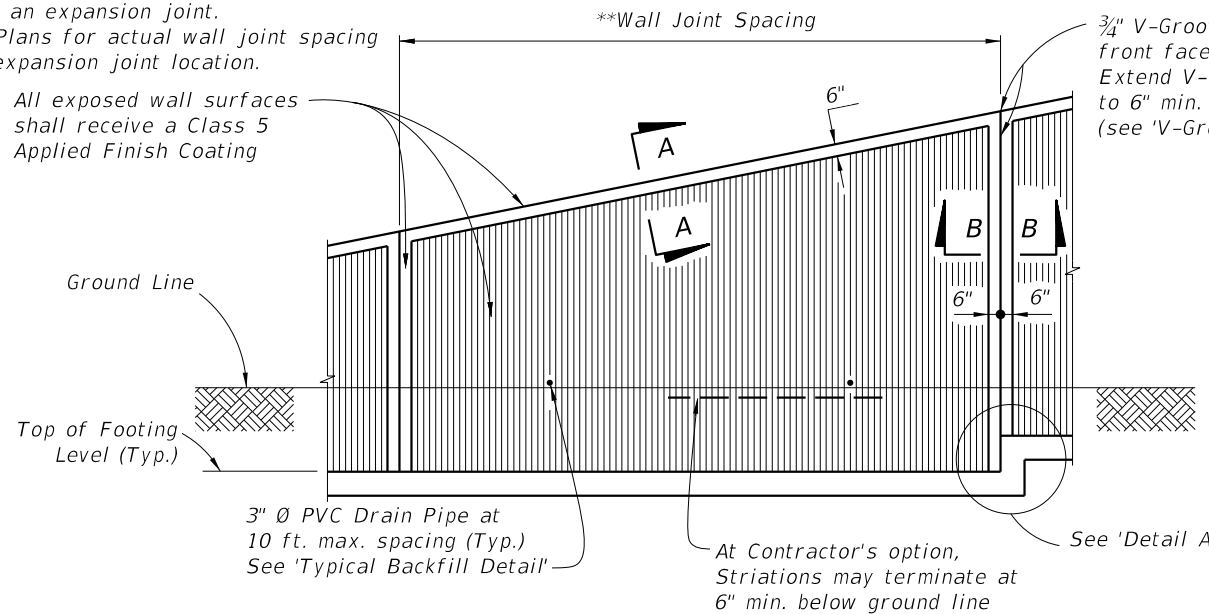


NOTE:  
All bar dimensions are out-to-out

|                                  |              |   |   |  |                          |                       |
|----------------------------------|--------------|---|---|--|--------------------------|-----------------------|
| LAST REVISION<br><b>01/01/11</b> | DESCRIPTION: |  | <b>FDOT DESIGN STANDARDS</b><br><b>FY 2012/2013</b> | <b>C-I-P CANTILEVER RETAINING WALL</b> | INDEX NO.<br><b>6010</b> | SHEET NO.<br><b>1</b> |
|----------------------------------|--------------|---|---|--|--------------------------|-----------------------|

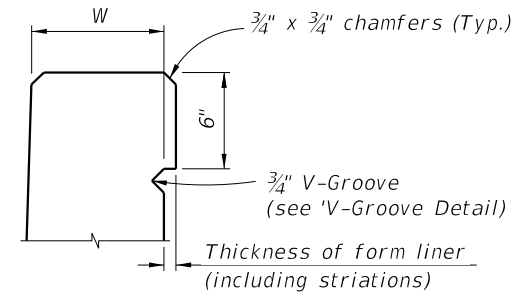
\*\*Wall joint spacing 25 ft. maximum.  
At minimum, every fourth wall joint to be an expansion joint.  
See Plans for actual wall joint spacing and expansion joint location.

All exposed wall surfaces shall receive a Class 5 Applied Finish Coating

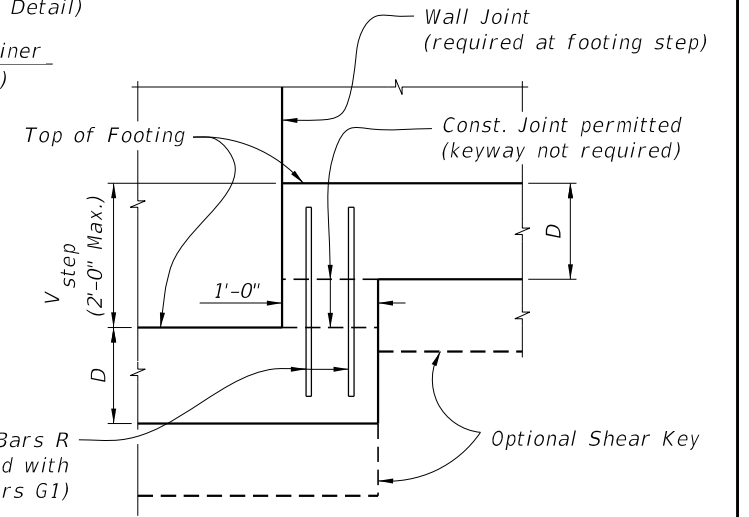


**FRONT ELEVATION**

3/4" V-Groove across top and down front face of wall at joint (Typ.). Extend V-Groove down back of wall to 6" min. below ground. (see 'V-Groove Detail')

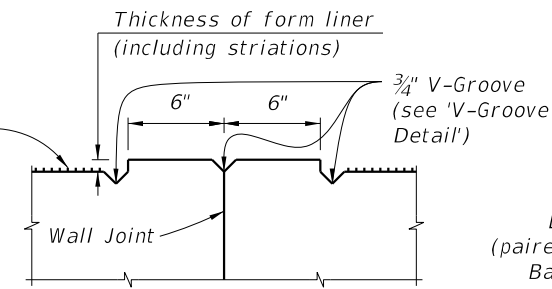


**SECTION A-A**

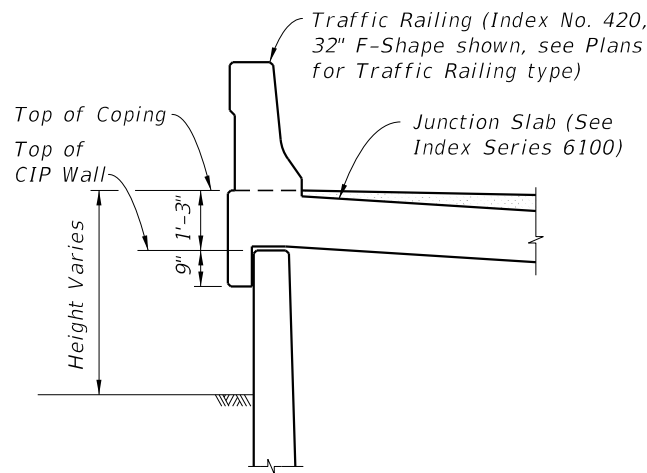


**DETAIL A**

Striated Surface shall consist of uniform vertical grooves of 1/8" to 1/4" depth and spacing

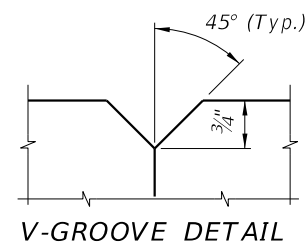


**SECTION B-B**

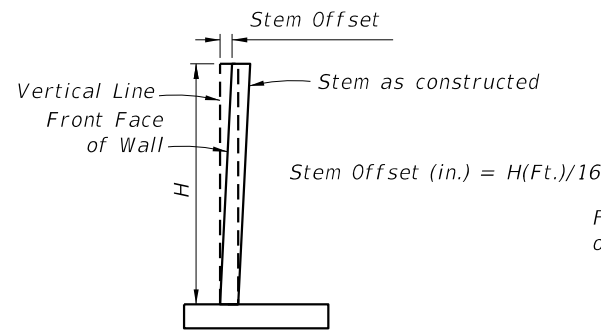


**TRAFFIC RAILING/JUNCTION SLAB DETAIL**

(32" F-Shape Shown, other Traffic Railings similar)  
(for 32" F-Shape Traffic Railing (as shown), see Index No. 420;  
for 32" Vertical Shape Traffic Railing, see Index No. 423;  
for 42" Vertical Shape Traffic Railing, see Index No. 422)

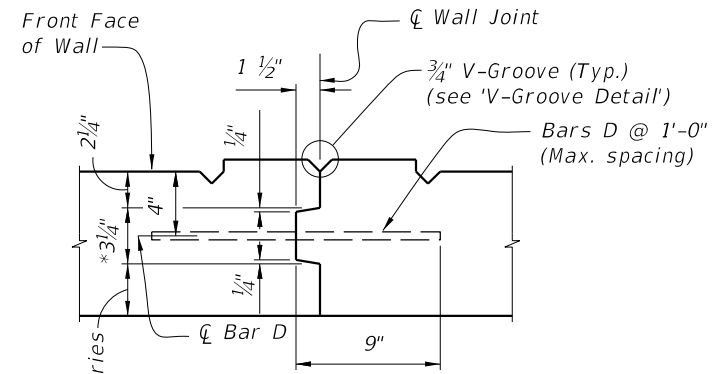


**V-GROOVE DETAIL**

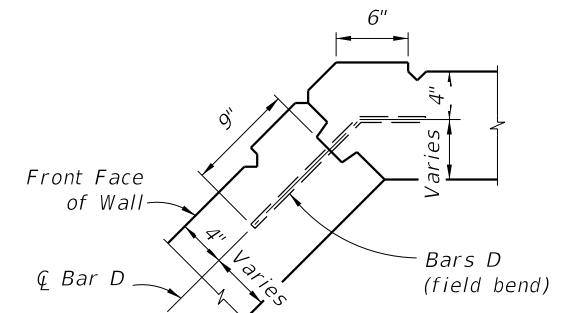


**STEM OFFSET VALUES**

( for H < 20 Ft. )

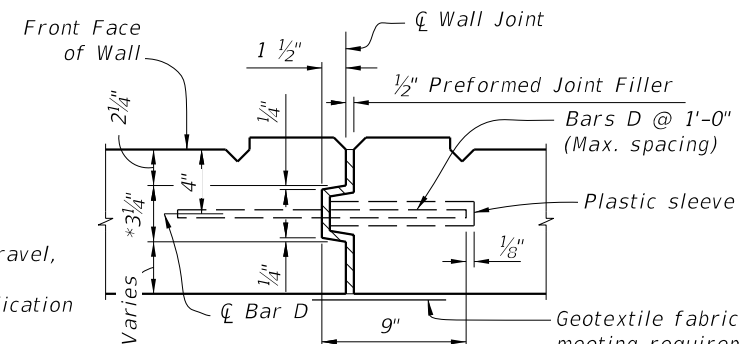


**WALL JOINT DETAIL**



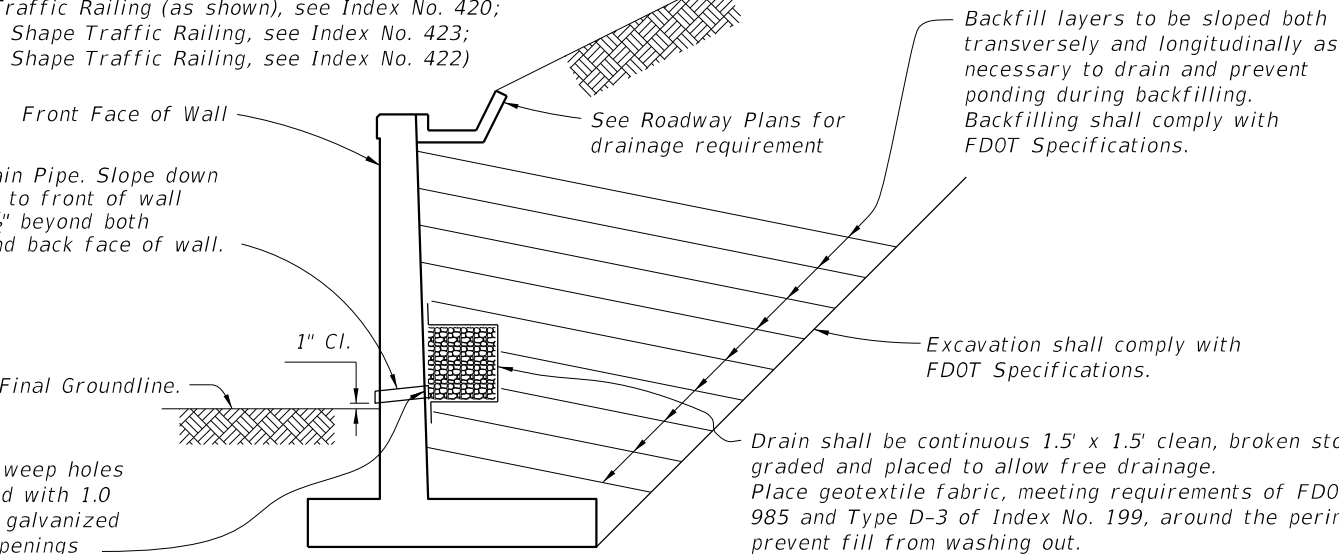
**TYPICAL CORNER JOINT DETAIL**

\*Key to stop at top of footing and 6" from top of wall.  
Joint across footing and top of wall to be straight line.



**EXPANSION JOINT DETAIL**

Geotextile fabric, 1'-0" wide and full height of fill, meeting requirements of Specification 985 and Type D-5 of Index No. 199. Apply an adhesive approved by the Engineer to the back of wall for attachment of fabric material.



**TYPICAL BACKFILL DETAIL**


3" Ø PVC Drain Pipe. Slope down 1/2" from back to front of wall and extend 1/2" beyond both front face and back face of wall.

Backfill layers to be sloped both transversely and longitudinally as necessary to drain and prevent ponding during backfilling. Backfilling shall comply with FDOT Specifications.

Excavation shall comply with FDOT Specifications.

Drain shall be continuous 1.5' x 1.5' clean, broken stone or gravel, graded and placed to allow free drainage. Place geotextile fabric, meeting requirements of FDOT Specification 985 and Type D-3 of Index No. 199, around the perimeter to prevent fill from washing out.

C:\projects\standards\structures\current\ready\4release\2012book\draft\06010-2of2.dgn  
rd960rh  
11:47:35 AM  
12/30/2011

|                                  |              |  |  |                          |                       |
|----------------------------------|--------------|--|--|--------------------------|-----------------------|
| LAST REVISION<br><b>01/01/11</b> | DESCRIPTION: |  <b>FDOT DESIGN STANDARDS</b><br>FY 2012/2013 | <b>C-I-P CANTILEVER RETAINING WALL</b> | INDEX NO.<br><b>6010</b> | SHEET NO.<br><b>2</b> |
| REVISION                         |              |  |  |                          |                       |