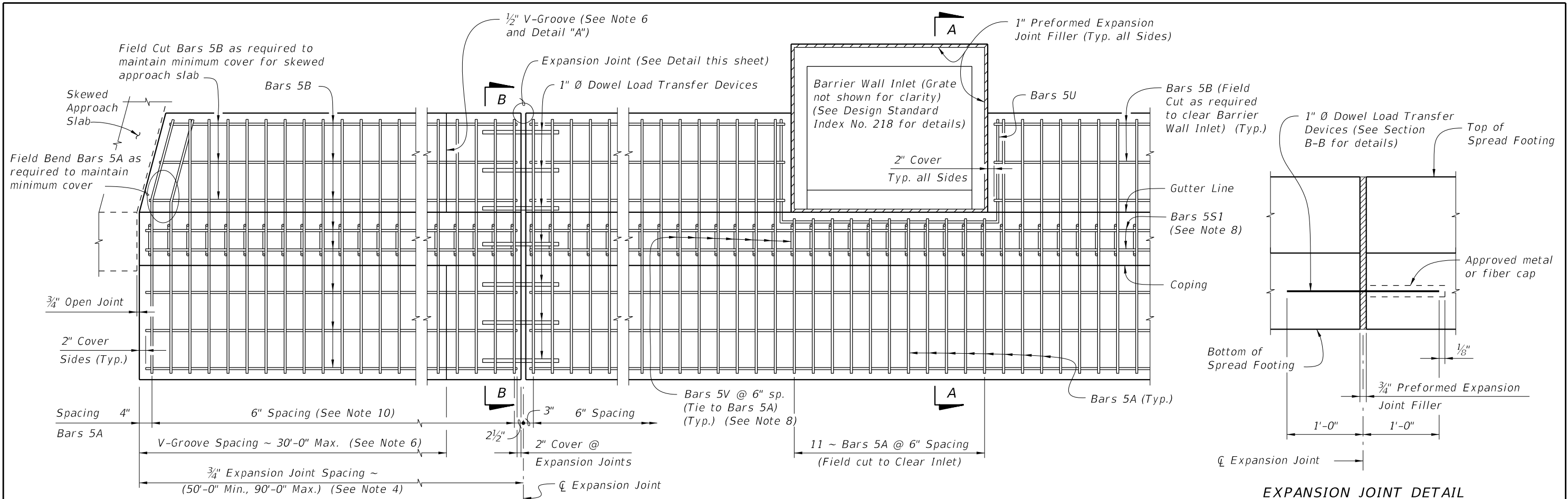
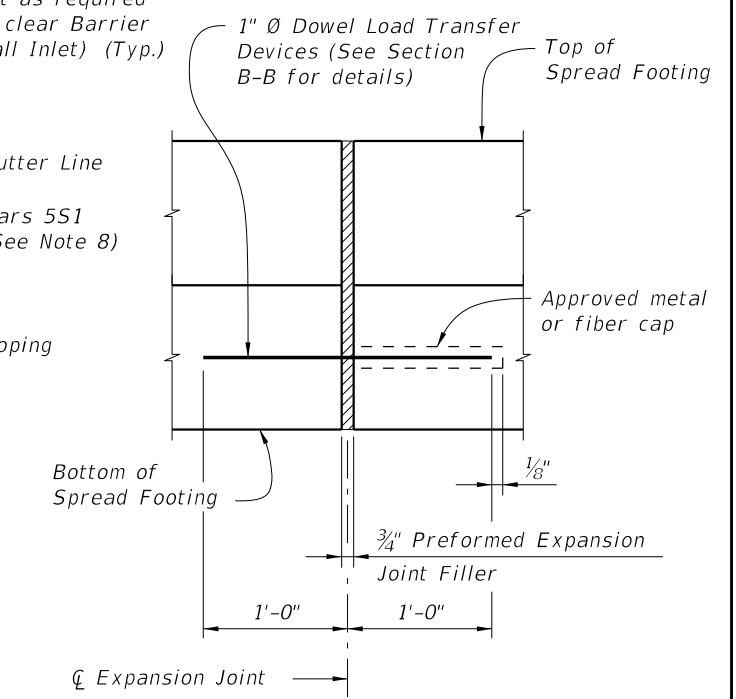


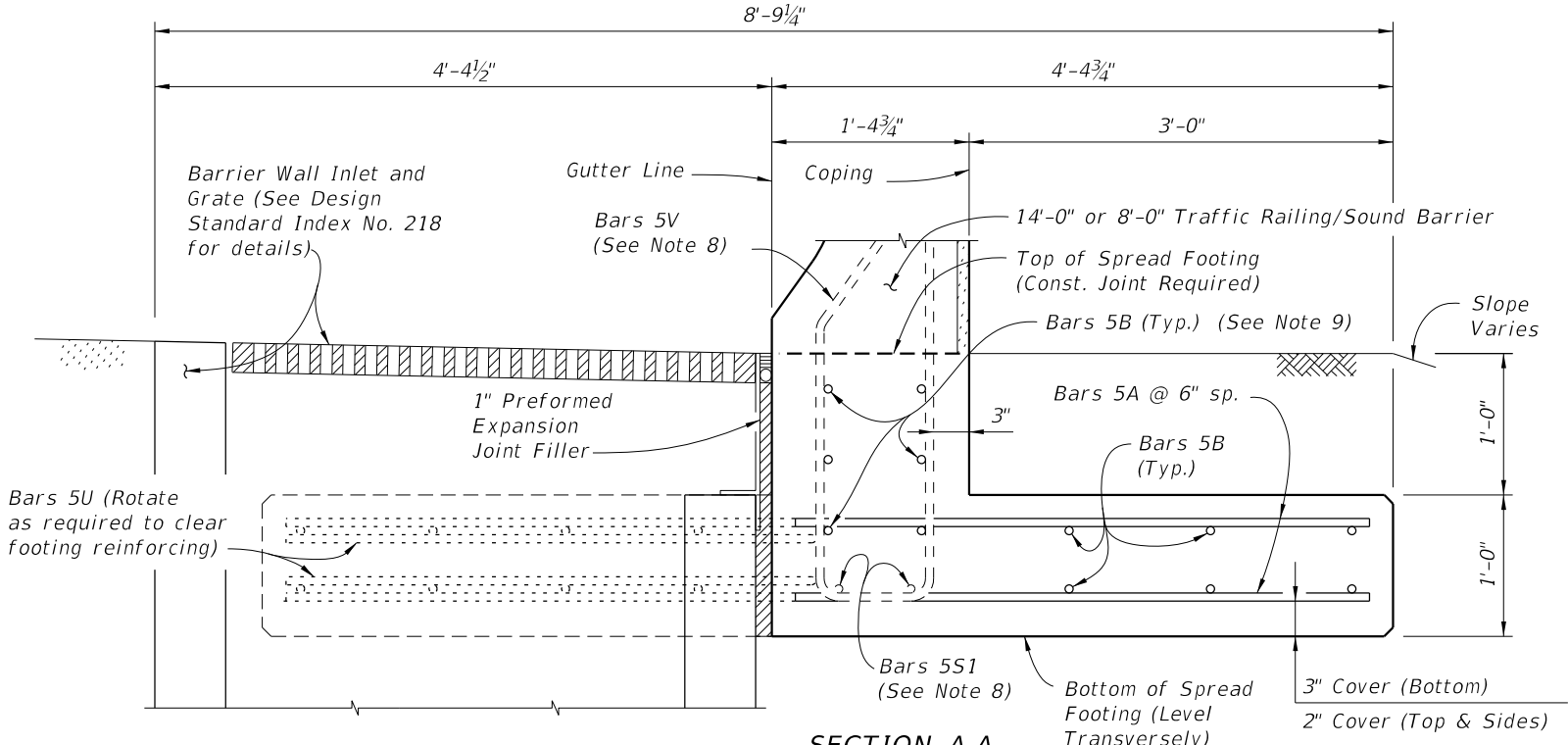
C:\projects\standards\structures\current\ready\4release\2012book_draft\05213-1of2.dgn
rd960/h
11:47:28 AM
12/30/2011



PLAN
SPREAD FOOTING ADJACENT TO SKEWED APPROACH SLAB AND WITH BARRIER WALL INLET



EXPANSION JOINT DETAIL
(Spread Footing expansion joints are required at 3/4" open joints in Traffic Railing/Sound Barrier)



SECTION A-A
SECTION THRU SPREAD FOOTING AND BARRIER WALL INLET
(Bars 5P, 5R and 5S1 in Traffic Railing/Sound Barrier not shown for clarity)

- NOTES**
- CONSTRUCTION REQUIREMENTS:** Construct the Spread Footing level transversely and expansion joints plumb; do not construct the spread footing perpendicular to the roadway surface. Slip forming is not permitted.
 - CONCRETE:** Use Class II concrete for slightly aggressive environments. Use Class IV concrete for moderately or extremely aggressive environments. Concrete will be in accordance with Specification Section 346.
 - REINFORCING STEEL:** Provide Grade 60 reinforcing steel in accordance with Specification Section 931. Dowel Load Transfer Devices will be ASTM A 36 smooth round bar and hot-dip galvanized in accordance with Specification Section 962. Install Dowel Load Transfer Devices in accordance with Specification Section 350.
 - Construct 3/4" Expansion Joints plumb and perpendicular or radial to Gutter Line. Provide at 90'-0" maximum intervals as shown.
 - Provide and install Preformed Expansion Joint Filler in accordance with Specification Section 932.
 - Construct 1/2" V-Grooves plumb and provide at 30'-0" maximum intervals as shown. Space V-Grooves equally between 3/4" Expansion Joints and/or Begin or End Spread Footing. V-Groove locations are to coincide with V-Groove locations in the Railing/Sound Barrier.
 - FILL REQUIREMENTS:** Shoulder or Roadway Pavement or Fill is required on top (1'-0" minimum depth) for the entire length of the spread footing on both sides of the Railing/Sound Barrier. See Section B-B for details.
 - See Index No. 5210 for Bars 5V and 5S1.
 - Place 6 ~ Bars 5B inside Stirrup Bars 5V as shown.
 - Spacing shown is along the Gutter Line.
 - Work this Standard Drawing with one or both of the following:
 - Index No. 5210 - Traffic Railing/Sound Barrier (8'-0").
 - Index No. 5211 - Traffic Railing/Sound Barrier (14'-0").

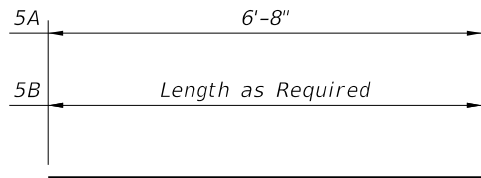
CROSS REFERENCE:
For Section B-B and Detail "A", see Sheet No. 2.

LAST REVISION	REVISION	DESCRIPTION:		FDOT DESIGN STANDARDS FY 2012/2013	TRAFFIC RAILING/SOUND BARRIER T-SHAPED SPREAD FOOTING	INDEX NO. 5213	SHEET NO. 1
07/01/05							

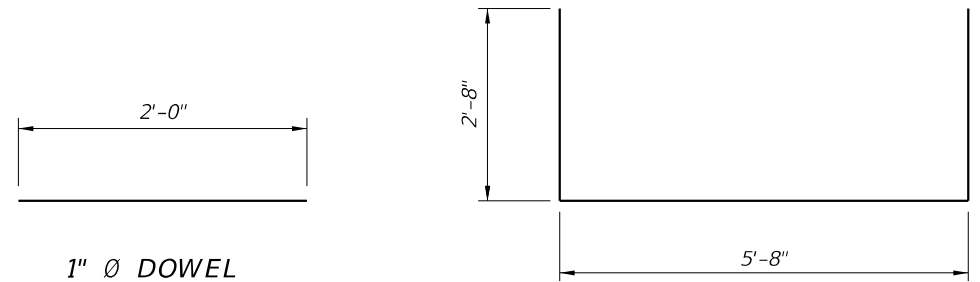
REINFORCING STEEL BENDING DIAGRAMS

BILL OF REINFORCING STEEL

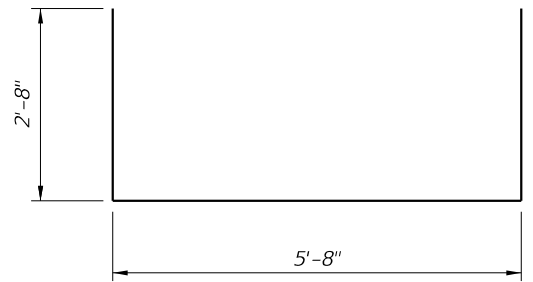
MARK	SIZE	LENGTH
A	5	6'-8"
B	5	AS REQD.
U	5	11'-0"
DOWEL	1" Ø Smooth Bar	2'-0"



BARS 5A & 5B



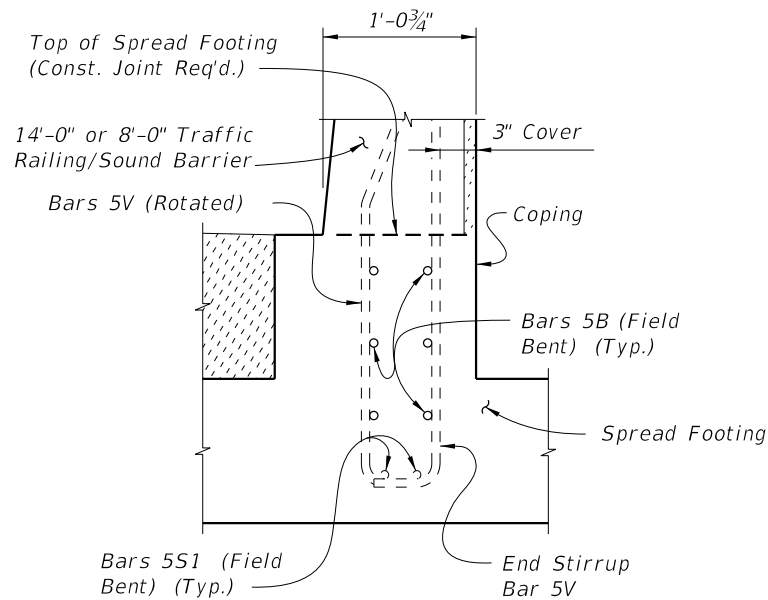
1" Ø DOWEL



BAR 5U

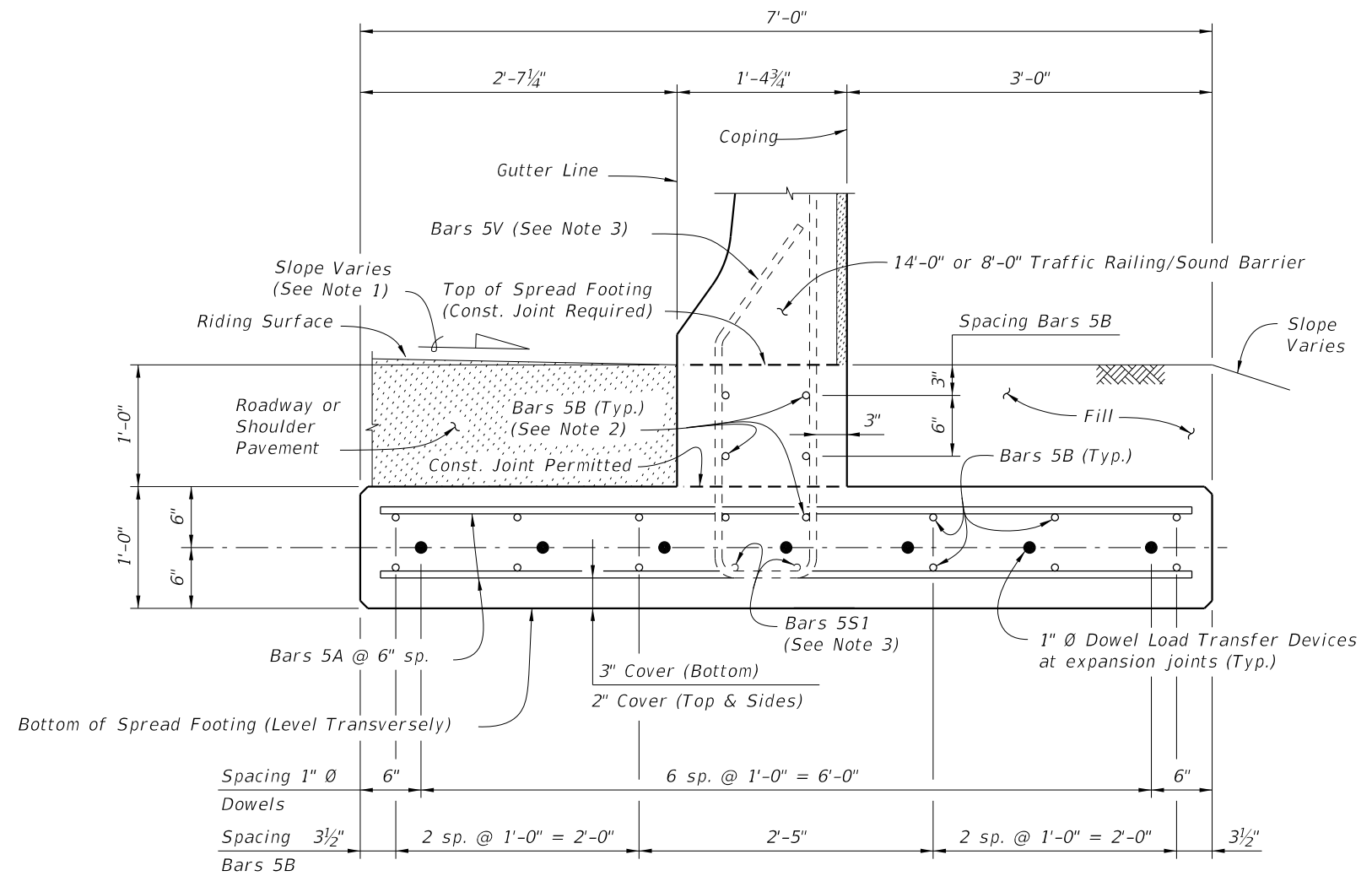
REINFORCING STEEL NOTES:

1. All bar dimensions in the bending diagrams are out to out.
2. All reinforcing steel at the open joints will have a 2" minimum cover.
3. Lap splices for Bars 5B will be a minimum of 2'-2".
4. The Contractor may use Welded Wire Reinforcement when approved by the Engineer. Welded Wire Reinforcement will conform to ASTM A 497.



PARTIAL END VIEW OF RAILING END TRANSITION FOR GUARDRAIL ATTACHMENT (Showing Bars 5V, Bars 5S1 and Bars 5B inside of Stirrup Bars 5V)

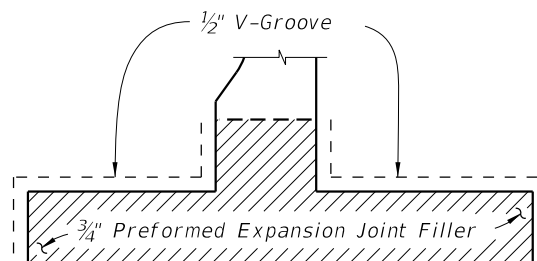
NOTE: See Index No. 5210, Detail "A" for details.



SECTION B-B
TYPICAL SECTION THRU SPREAD FOOTING
(Bars 5P, 5R and 5S1 in Traffic Railing/Sound Barrier not shown for clarity)

NOTES:

1. Match Cross Slope of Travel Lane or Shoulder.
2. Place 6 ~ Bars 5B inside Stirrup Bars 5V as shown.
3. See Index No. 5210 for Bars 5V and Bars 5S1.



DETAIL "A"

(Showing Locations of 1/2" V-Grooves and 3/4" Preformed Expansion Joint Filler)

ESTIMATED T-SHAPED SPREAD FOOTING QUANTITIES

ITEM	UNIT	QUANTITY
Concrete (Footing)	CY/FT	0.311
Reinforcing Steel (Typical)	LB/FT	51.80
Additional Reinf. @ Expansion Joint	LB	37.38

Note: The reinforcing steel quantity accounts for the difference between the shorter Stirrup Bars 5V for junction slabs or bridges and the longer Stirrup Bars 5V for spread footings.

CROSS REFERENCE:

For location of Section B-B, see Sheet 1.

C:\projects\standards\structures\current\ready\4release\2012book_draft\05213-2of2.dgn
11:47:29 AM
12/30/2011