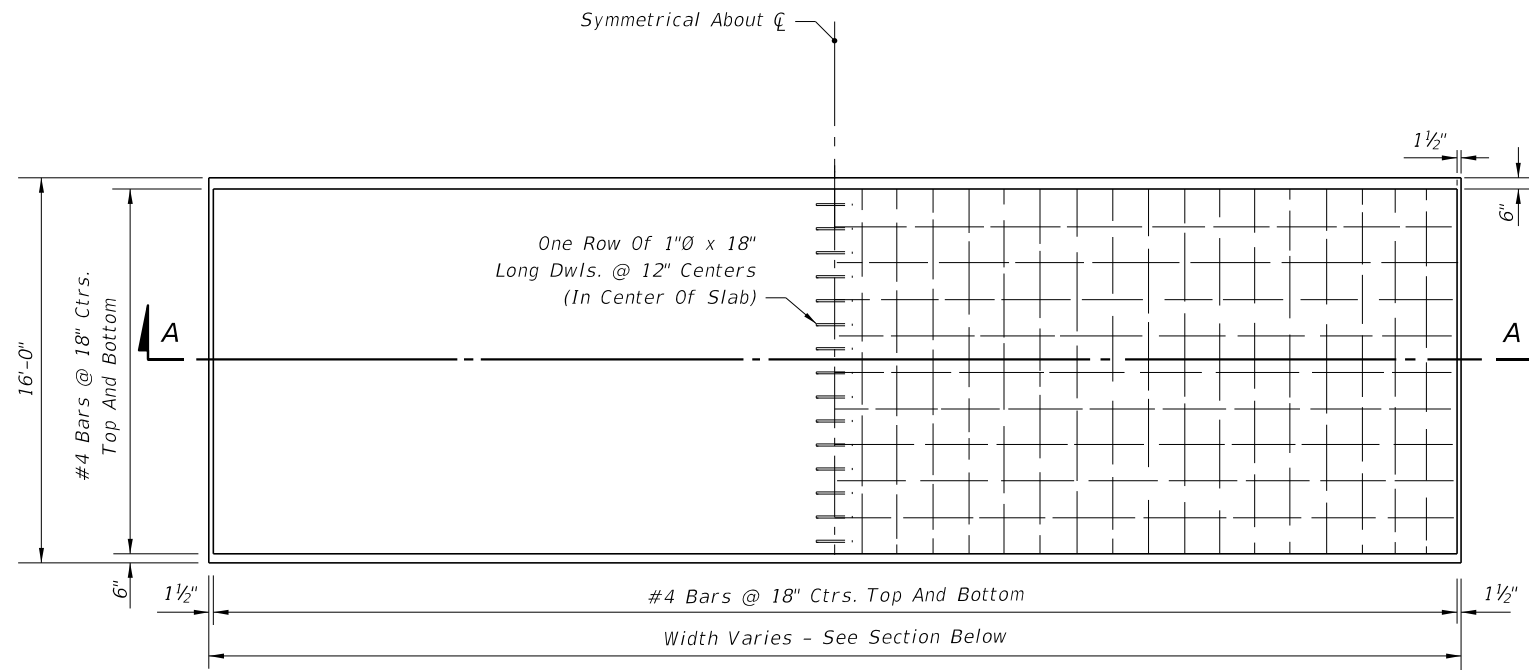
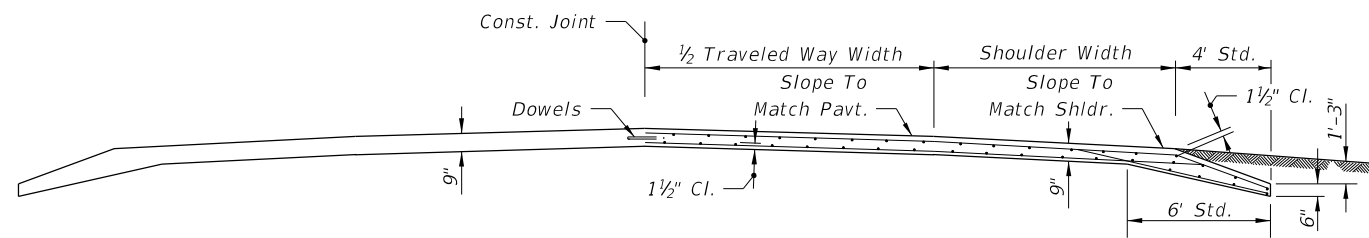


C:\projects\standards\roadway\00500-s\00535-01.dgn
 r0960rh
 11:44:50 AM
 12/30/2011



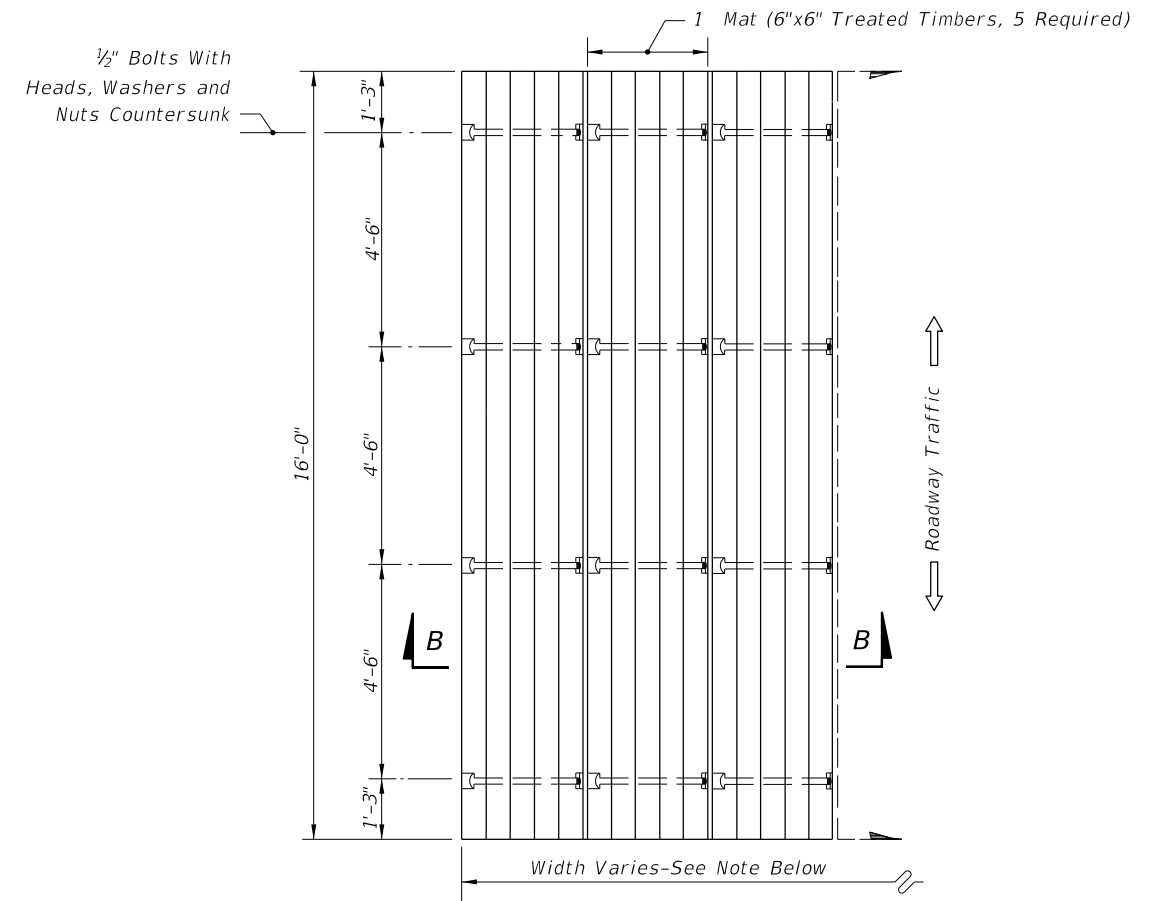
PLAN



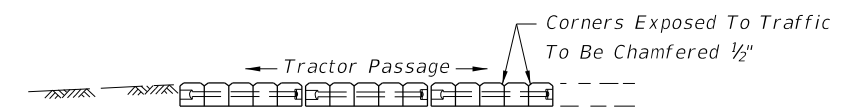
SECTION AA

Note: Class I concrete is to be used unless otherwise noted in plans or special provisions.

REINFORCED CONCRETE
TYPE A



PLAN



SECTION BB

Note: Tractor crossing to be constructed to match pavement cross slope.

The number of mats required will vary with the pavement width. A sufficient number of mats will be used so that the tractor crossing will extend a minimum of four feet (4') beyond roadway shoulders.

TREATED TIMBER
TYPE B

GENERAL NOTES

1. Tractor crossing shall be paid for under the contract unit price for Tractor Crossing, EA.

TRACTOR CROSSINGS

LAST REVISION	DESCRIPTION:	 FDOT DESIGN STANDARDS FY 2012/2013	TRACTOR CROSSINGS	INDEX NO.	SHEET NO.
00				535	1