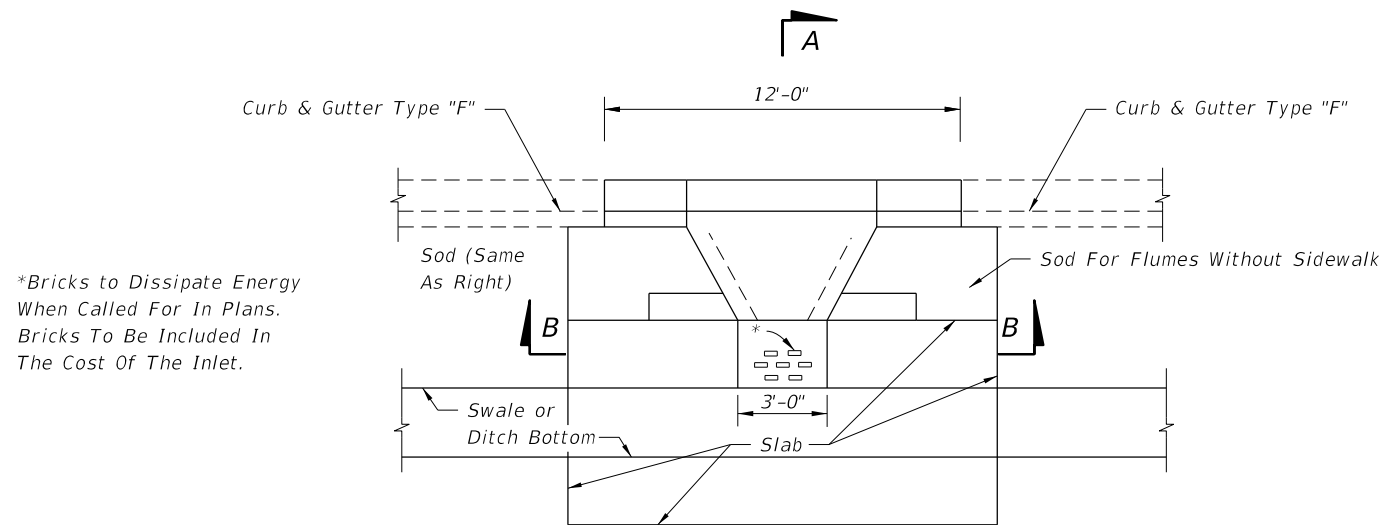
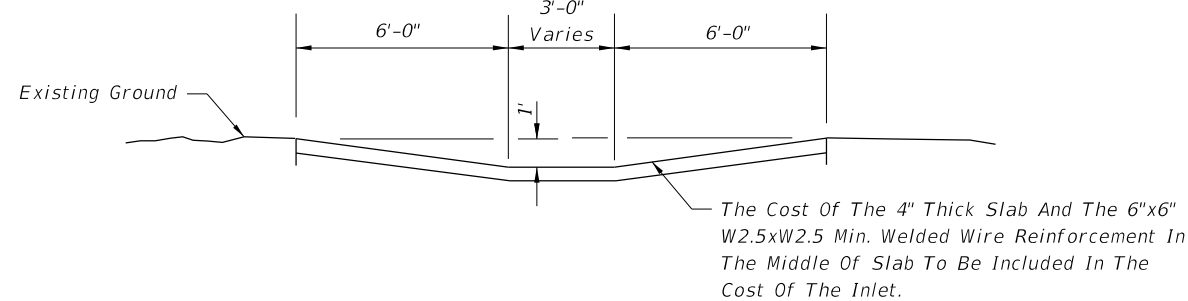


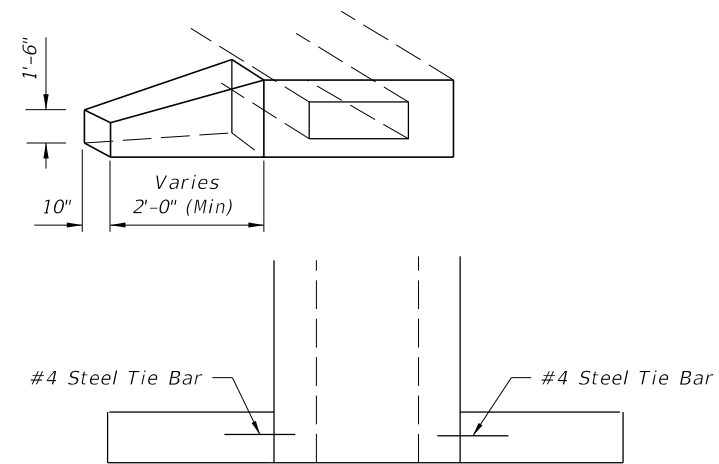
C:\projects\standards\roadway\0200-s\0216-02.dgn
 r0960rh
 11:39:14 AM
 12/30/2011



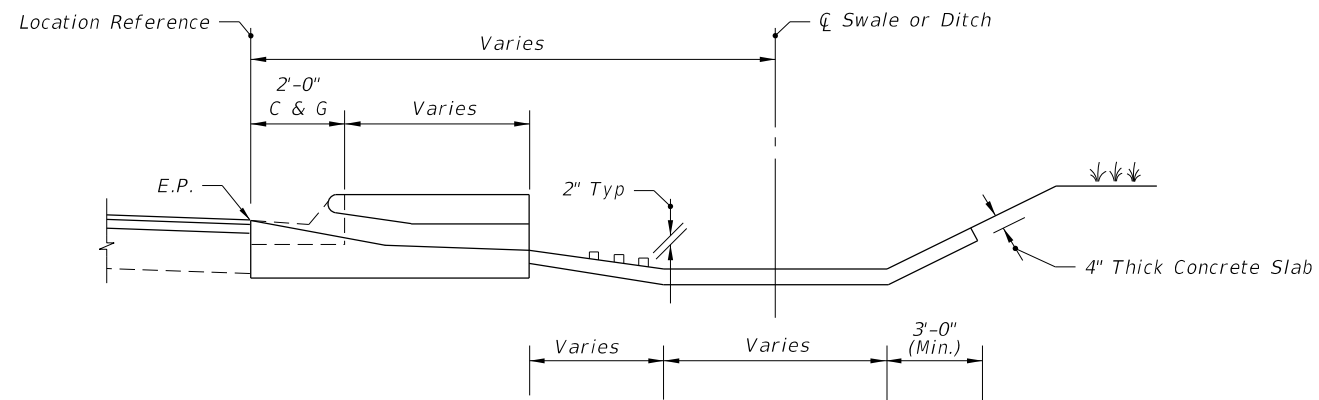
SINGLE BARREL FLUME DEPICTED
PLAN



SINGLE BARREL FLUME DEPICTED
SECTION BB

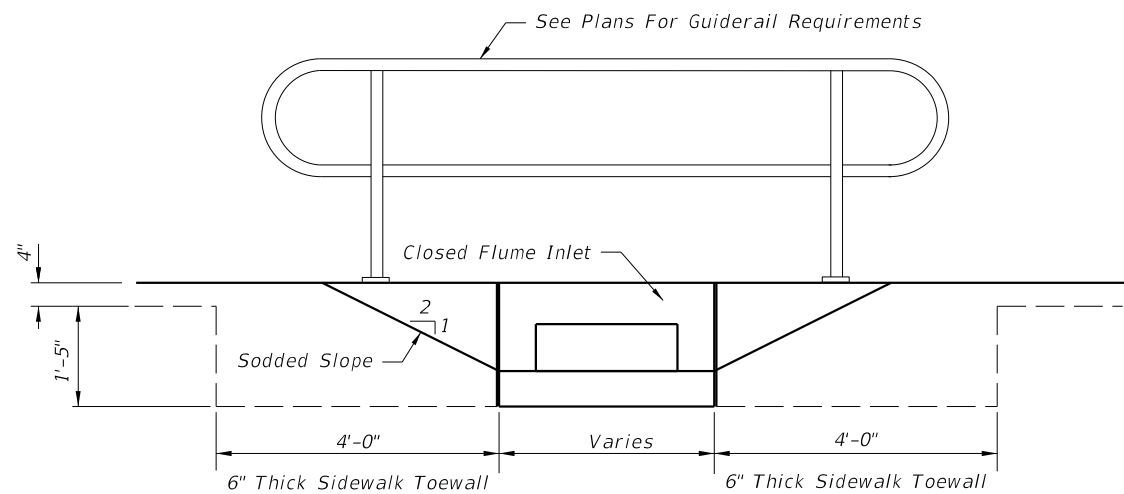


SINGLE BARREL FLUME DEPICTED
ENDWALL



SECTION AA

SLOPES, DITCH APRON AND ENDWALLS



SINGLE BARREL FLUME DEPICTED
ELEVATION

GUIDERAIL FOR FLUME IN SIDEWALK

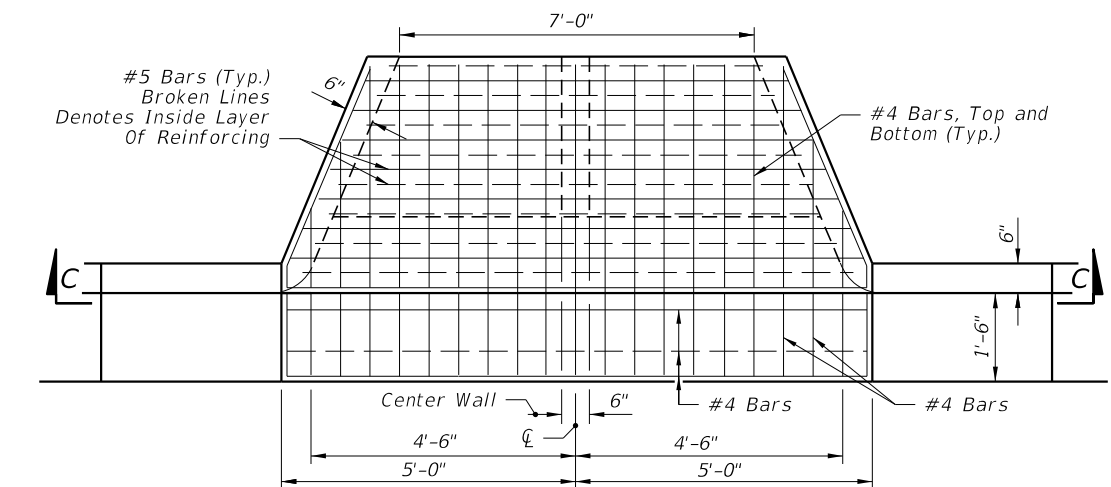
LAST REVISION	DESCRIPTION:
07	



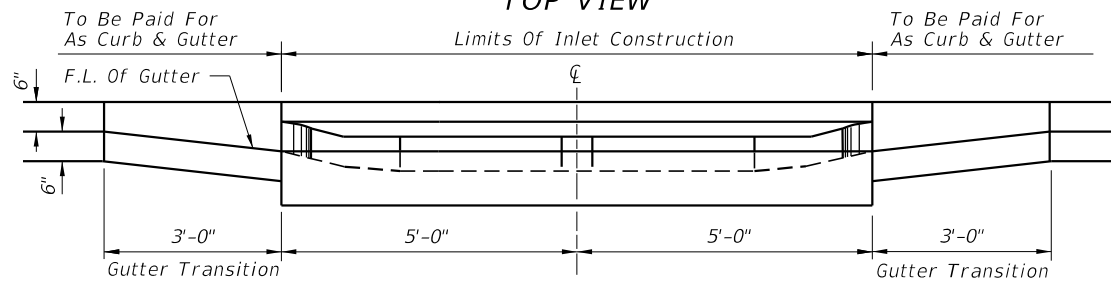
FDOT DESIGN STANDARDS
FY 2012/2013

CLOSED FLUME INLET

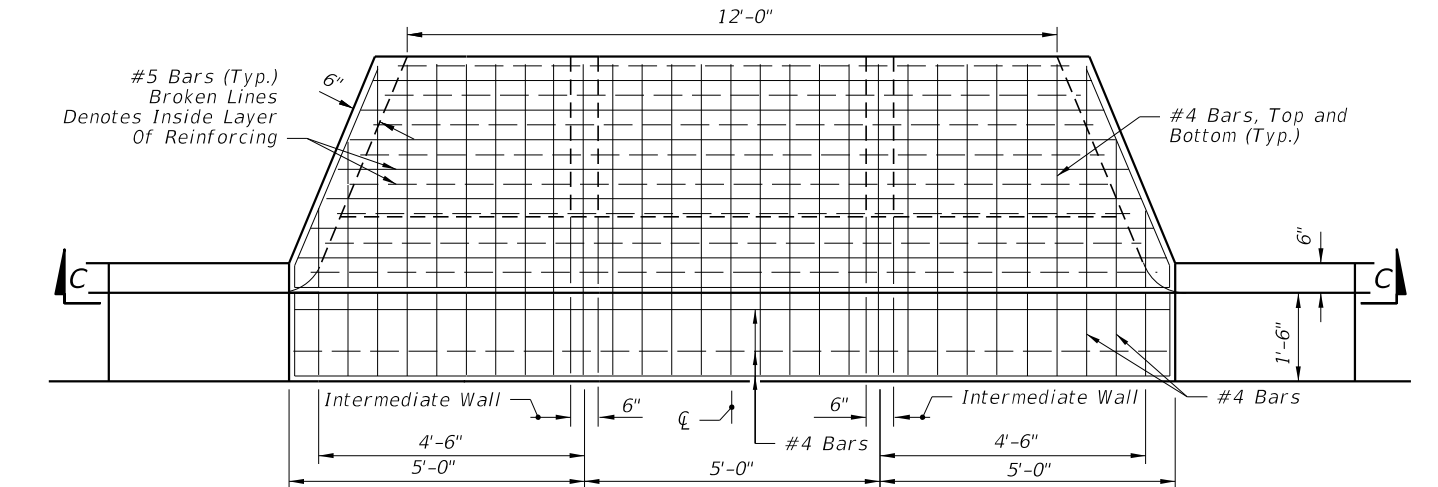
INDEX NO.	SHEET NO.
216	2



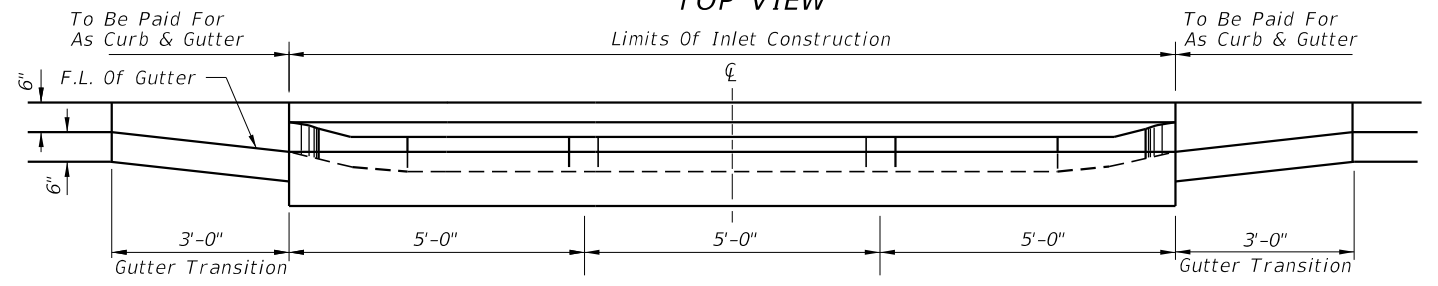
TOP VIEW



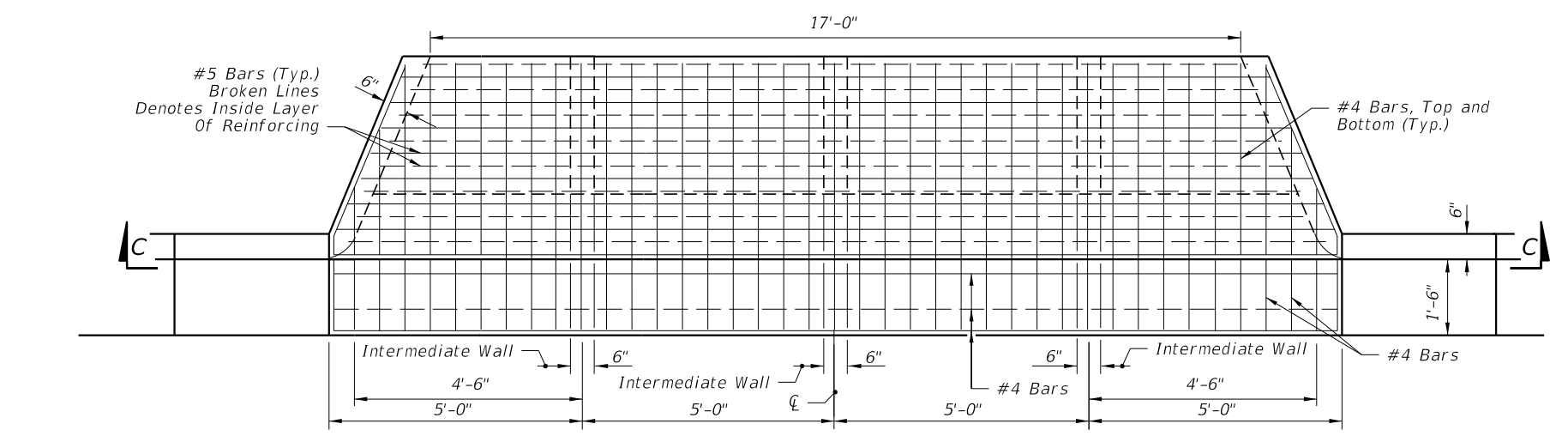
SECTION CC
DOUBLE BARREL FLUME



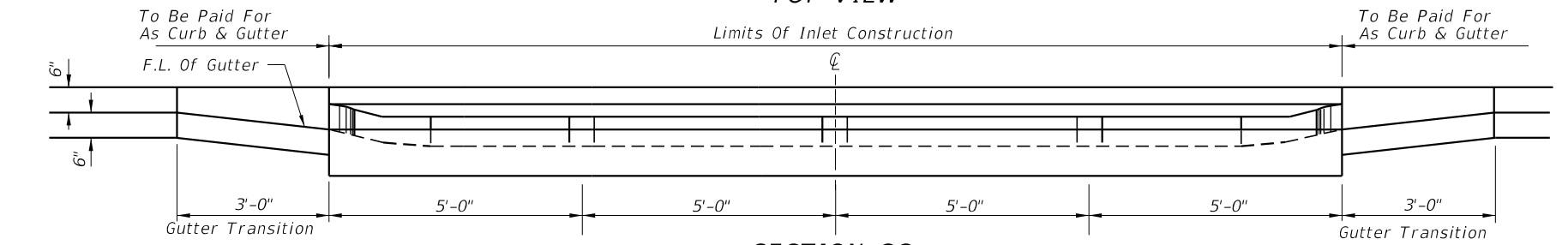
TOP VIEW



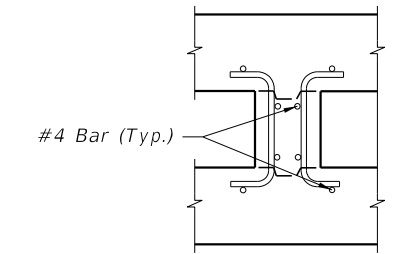
SECTION CC
TRIPLE BARREL FLUME



TOP VIEW



SECTION CC
QUADRUPLE BARREL FLUME



INTER-WALL REINFORCING

NOTE: See Single Barrel Flume For Base Dimensions.

C:\projects\standards\roadway\0200-s\0216-03.dgn
 r1960/h
 11:39:14 AM
 12/30/2011

LAST REVISION	REVISION	DESCRIPTION:	 FDOT DESIGN STANDARDS FY 2012/2013	CLOSED FLUME INLET	INDEX NO.	SHEET NO.
02					216	3