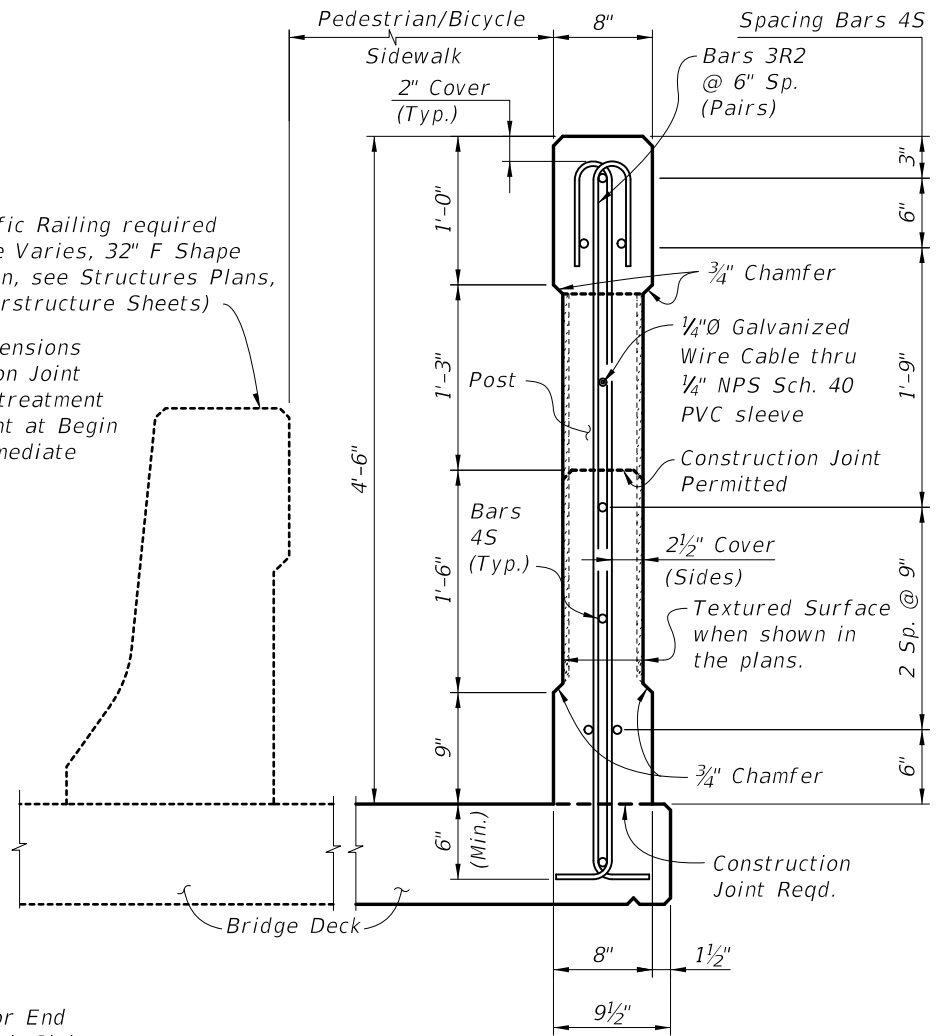
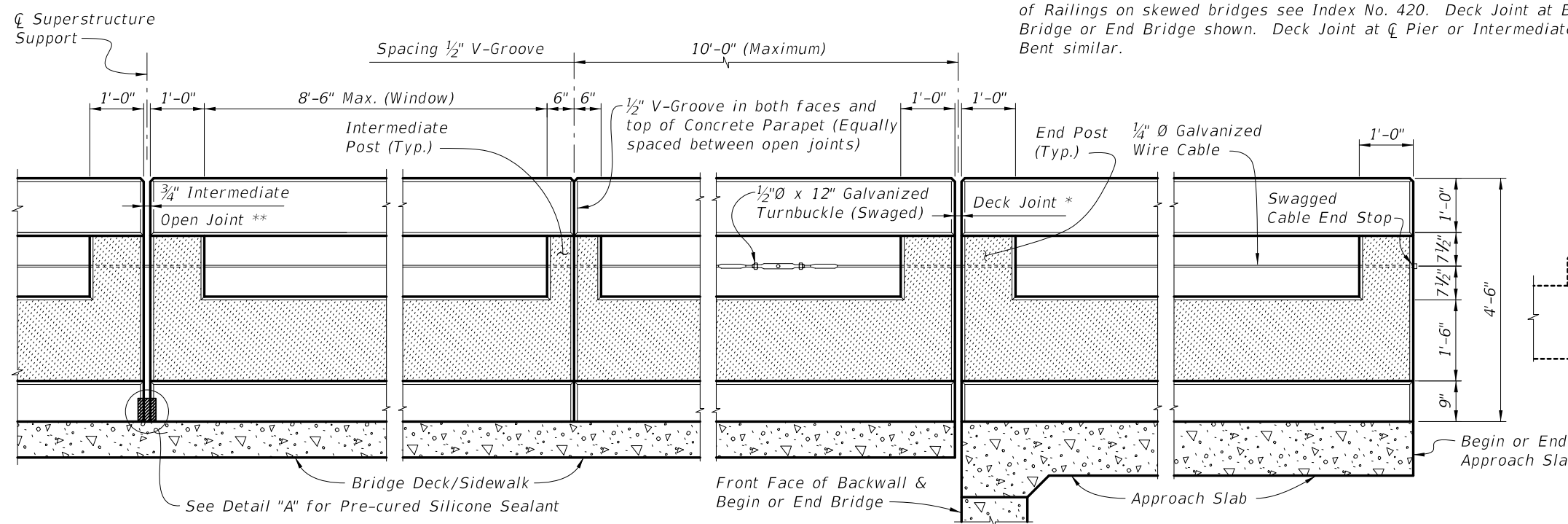


Traffic Railing required (Type Varies, 32" F Shape shown, see Structures Plans, Superstructure Sheets)

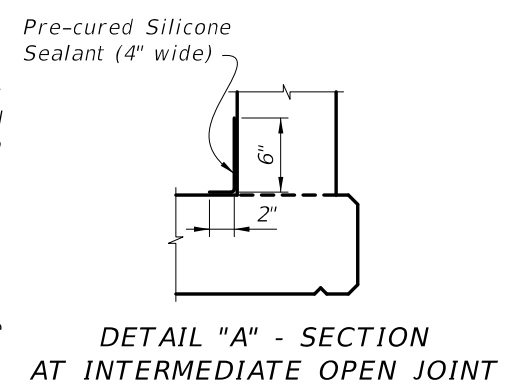
* See Structures Plans, Superstructure Sheets for actual dimensions and joint orientation. Open Parapet Joints at Deck Expansion Joint locations shall match the dimension of the Deck Joint. For treatment of Railings on skewed bridges see Index No. 420. Deck Joint at Begin Bridge or End Bridge shown. Deck Joint at \emptyset Pier or Intermediate Bent similar.



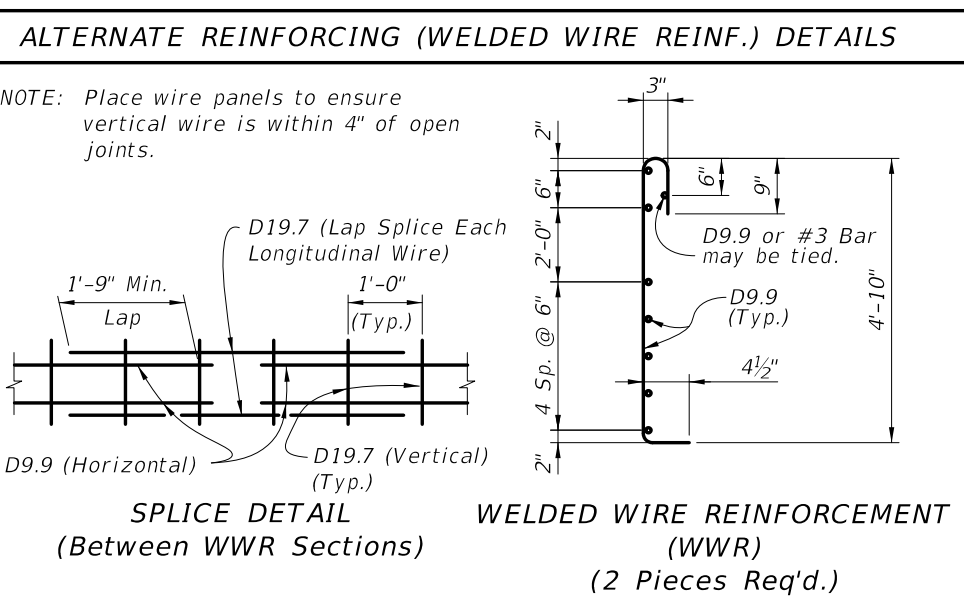
** $\frac{3}{4}$ " Intermediate Open Joints shall be provided at locations coinciding with $\frac{3}{4}$ " Joints for the Traffic Railing.

INTERMEDIATE JOINT SEAL NOTE:

1. At Intermediate Open Joints, seal the lower 6" portion of the open joint with Pre-cured Silicone Sealant in accordance with Section 932 of the Specifications.
2. Apply sealant prior to any Class V finish coating and remove all curing compound and loose material from the surface prior to application of bonding agent.
3. The cost of the Pre-cured Silicone Sealant shall be included in the Contract Unit Price for the Concrete Parapet.



CROSS REFERENCES:
See Sheet 2 for notes on Reinforcing Steel, Concrete Parapet, Galvanized Wire Cable and Precast Panel Option.



CONVENTIONAL REINFORCING STEEL BENDING DIAGRAMS

BILL OF REINFORCING STEEL

MARK	SIZE	LENGTH
R2	3	6'-2"
S	4	As Req'd.

ESTIMATED CONCRETE PARAPET QUANTITIES

ITEM	UNIT	QUANTITY
Concrete	CY/LF	0.077
Reinforcing Steel	LB/LF	14.62

(The above quantities are based on a deck with a 2% cross slope)

Labels include: 3", 2 1/4" \emptyset Pin, 4 1/2", 4'-10", As Req'd., BAR 3R2, BAR 4S.

REVISIONS

DATE	BY	DESCRIPTION	DATE	BY	DESCRIPTION
07/01/10	SJN	New Design Standard			
01/01/11	CMH	Changed * note reference for Skew Treatment to Index No. 420, and DETAIL "A" to Pre-cured Silicone Sealant.			

2010 Interim Design Standard

54" CONCRETE PEDESTRIAN/BICYCLE RAILING

Interim Date: 01/01/11
Sheet No.: 1 of 2
Index No.: **826**