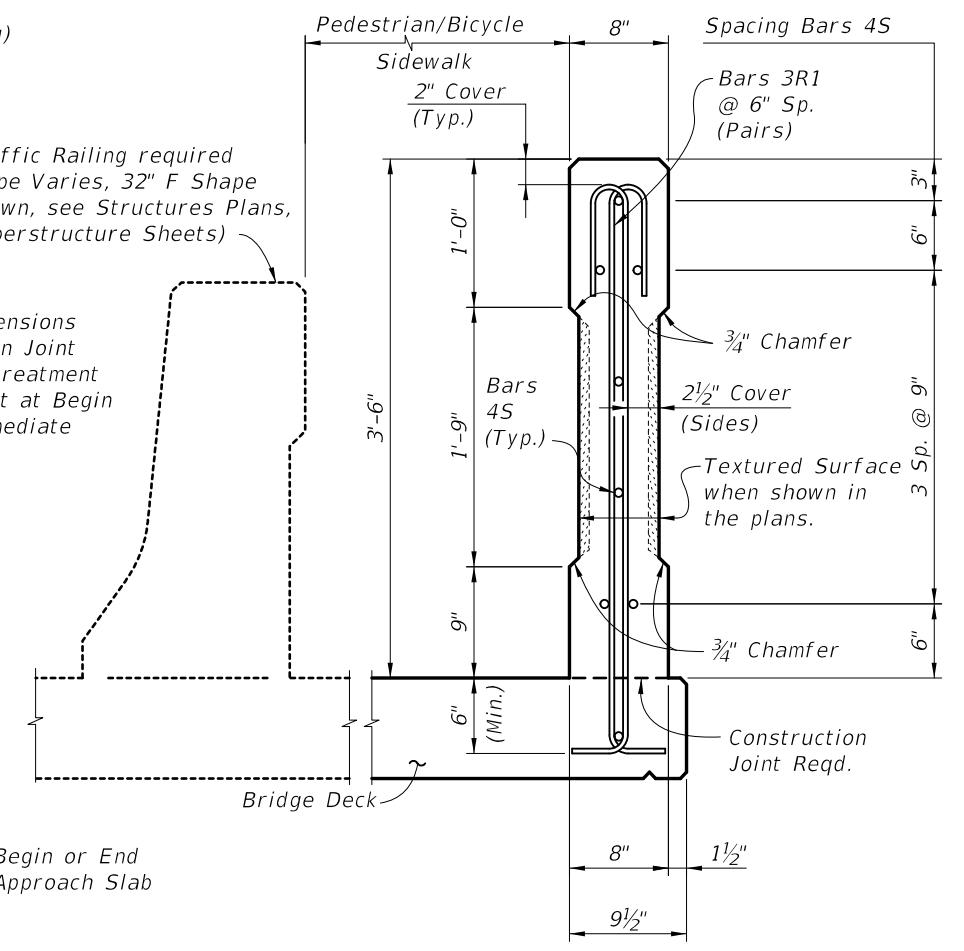


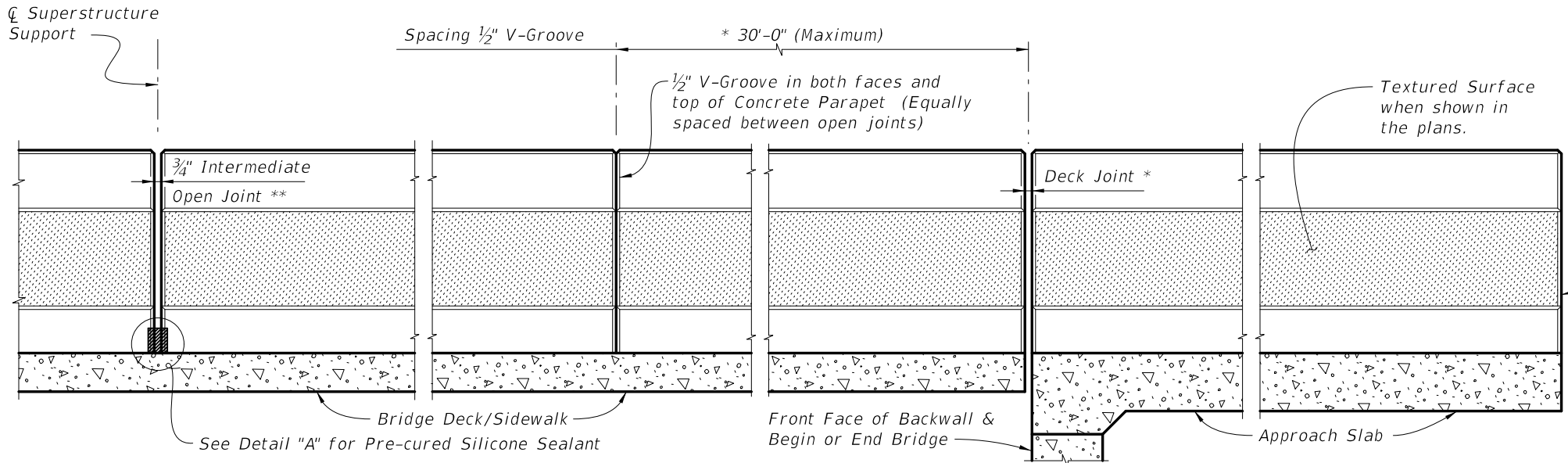
PLAN
(Reinforcing Steel not shown for clarity)

* See Structures Plans, Superstructure Sheets for actual dimensions and joint orientation. Open Parapet Joints at Deck Expansion Joint locations shall match the dimension of the Deck Joint. For treatment of Railings on skewed bridges see Index No. 420. Deck Joint at Begin Bridge or End Bridge shown. Deck Joint at \bar{C} Pier or Intermediate Bent similar.

Traffic Railing required (Type Varies, 32" F Shape shown, see Structures Plans, Superstructure Sheets)



SECTION A-A
(Typical C.I.P. Section Thru Bridge Deck Shown, Section Thru Approach Slab Similar)



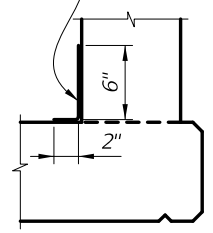
ELEVATION OF INSIDE FACE OF RAILING
(Reinforcing Steel not shown for clarity)

** 3/4" Intermediate Open Joints shall be provided at locations coinciding with 3/4" Joints for the Traffic Railing.

INTERMEDIATE JOINT SEAL NOTE:

1. At Intermediate Open Joints, seal the lower 6" portion of the open joint with Pre-cured Silicone Sealant in accordance with Section 932 of the Specifications.
2. Apply sealant prior to any Class V finish coating and remove all curing compound and loose material from the surface prior to application of bonding agent.
3. The cost of the Pre-cured Silicone Sealant shall be included in the Contract Unit Price for the Concrete Parapet.

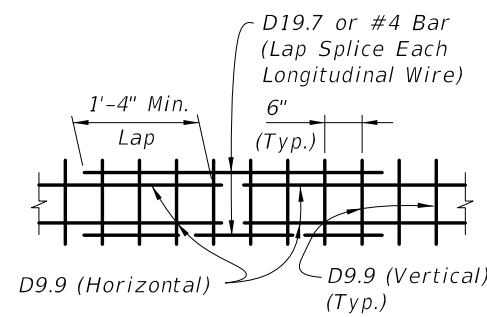
Pre-cured Silicone Sealant (4" wide)



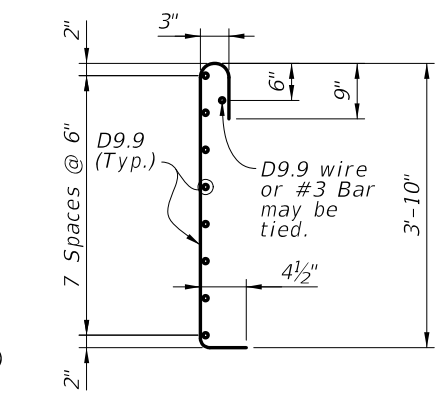
DETAIL "A" - SECTION AT INTERMEDIATE OPEN JOINT

ALTERNATE REINFORCING (WELDED WIRE REINF.) DETAILS

NOTE: Place wire panels to ensure vertical wire is within 4" of open joints.



SPLICE DETAIL
(Between WWR Sections)

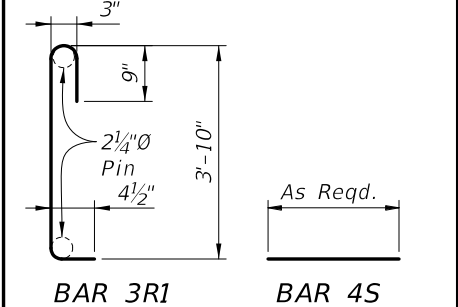


WELDED WIRE REINFORCEMENT (WWR)
(2 Pieces Req'd.)

CONVENTIONAL REINFORCING STEEL BENDING DIAGRAMS

BILL OF REINFORCING STEEL

MARK	SIZE	LENGTH
R1	3	5'-2"
S	4	As Req'd.



ESTIMATED CONCRETE PARAPET QUANTITIES

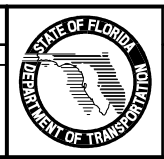
ITEM	UNIT	QUANTITY
Concrete	CY/LF	0.079
Reinforcing Steel	LB/LF	13.12

(The above quantities are based on a deck with a 2% cross slope)

CROSS REFERENCES:

See Sheet 2 for notes on Reinforcing Steel, Concrete Parapet, and Precast Panel Option.

REVISIONS			
DATE	BY	DESCRIPTION	
07/01/10	SJN	New Design Standard	
01/01/11	CMH	Changed * note reference for Skew Treatment to Index 420, and DETAIL "A" to Pre-cured Silicone Sealant.	



2010 Interim Design Standard
42" CONCRETE PEDESTRIAN/ BICYCLE RAILING

Interim Date: 01/01/11
Sheet No.: 1 of 2
Index No.: **825**