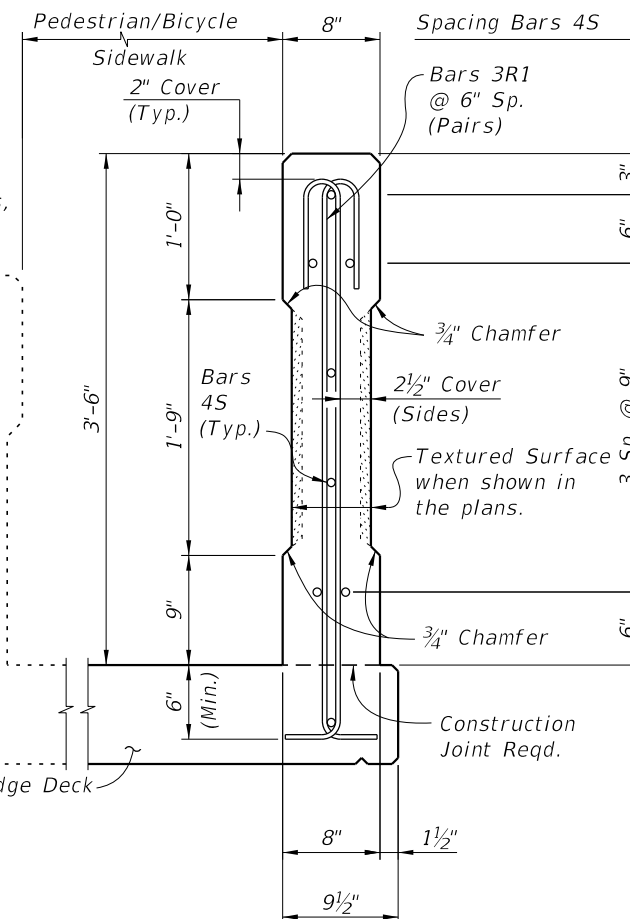


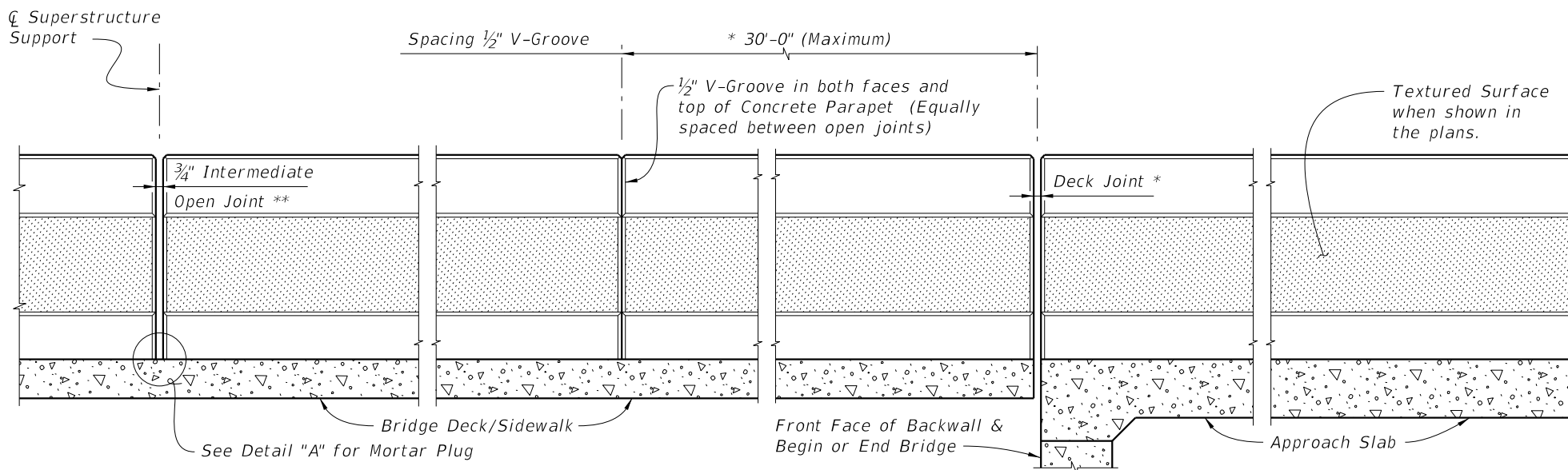
PLAN
(Reinforcing Steel not shown for clarity)

* See Structures Plans, Superstructure Sheets for actual dimensions and joint orientation. Open Parapet Joints at Deck Expansion Joint locations shall match the dimension of the Deck Joint. For treatment of Railings on skewed bridges see Index No. 490. Deck Joint at Begin Bridge or End Bridge shown. Deck Joint at ϕ Pier or Intermediate Bent similar.

Traffic Railing required (Type Varies, 32" F Shape shown, see Structures Plans, Superstructure Sheets)



SECTION A-A
(Typical C.I.P. Section Thru Bridge Deck Shown, Section Thru Approach Slab Similar)

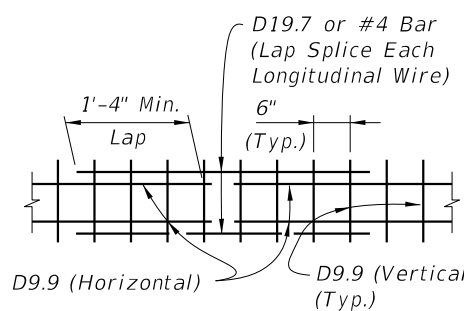


ELEVATION OF INSIDE FACE OF RAILING
(Reinforcing Steel not shown for clarity)

** $\frac{3}{4}$ " Intermediate Open Joints shall be provided at locations coinciding with $\frac{3}{4}$ " Joints for the Traffic Railing.

ALTERNATE REINFORCING (WELDED WIRE REINF.) DETAILS

NOTE: Place wire panels to ensure vertical wire is within 4" of open joints.

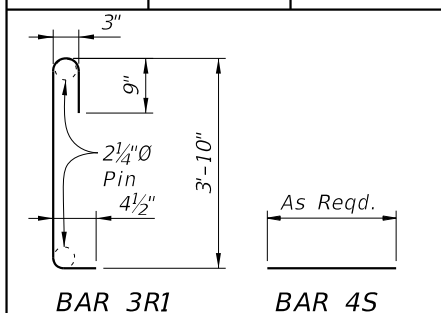


WELDED WIRE REINFORCEMENT (WWR)
(2 Pieces Req'd.)

CONVENTIONAL REINFORCING STEEL BENDING DIAGRAMS

BILL OF REINFORCING STEEL

MARK	SIZE	LENGTH
R1	3	5'-2"
S	4	As Req'd.



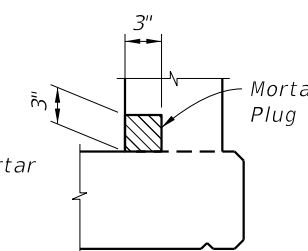
ESTIMATED CONCRETE PARAPET QUANTITIES

ITEM	UNIT	QUANTITY
Concrete	CY/LF	0.079
Reinforcing Steel	LB/LF	13.12

(The above quantities are based on a deck with a 2% cross slope)

NOTE:

At Intermediate Open Joints, the lower 3" portion of the open joint shall be plugged by filling it with mortar in accordance with Section 400 of the Specifications.

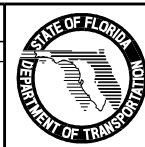


CROSS REFERENCES:

See Sheet 2 for notes on Reinforcing Steel, Concrete Parapet, and Precast Panel Option.

REVISIONS

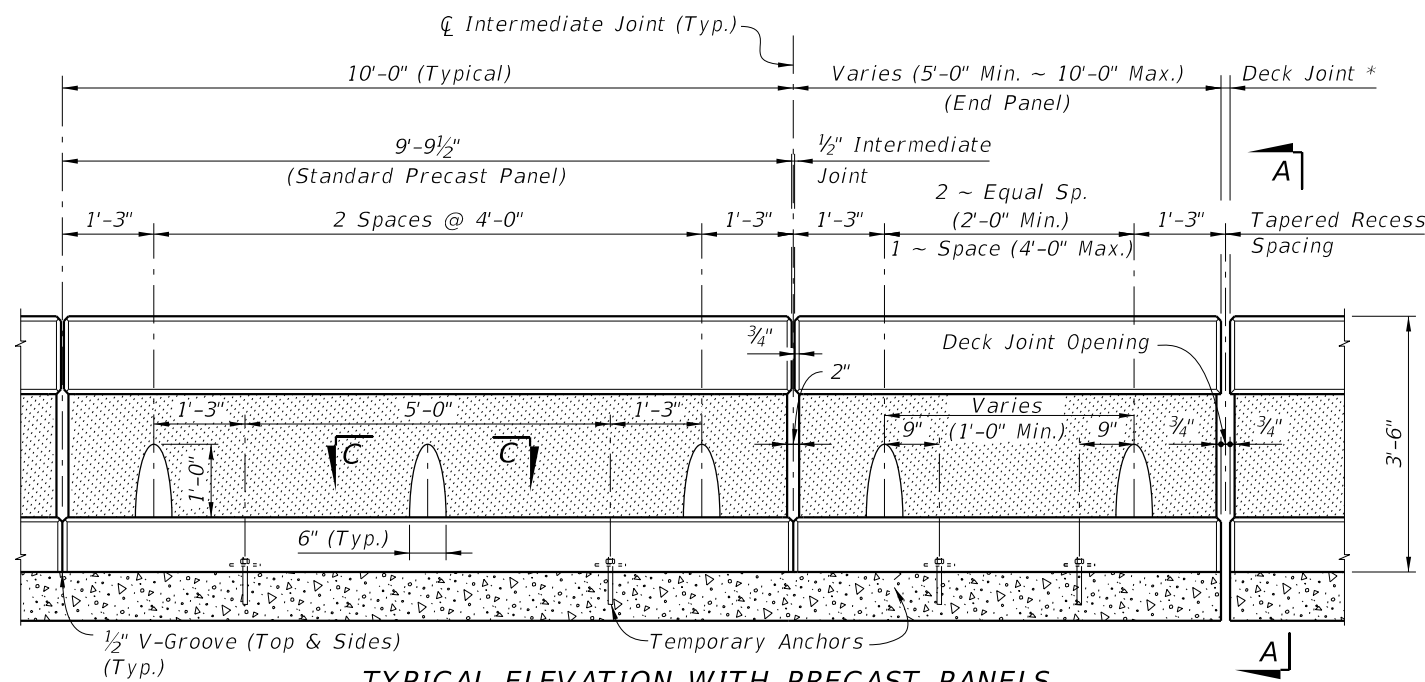
DATE	BY	DESCRIPTION	DATE	BY	DESCRIPTION
07/01/10	SJN	New Design Standard			



2010 Interim Design Standard

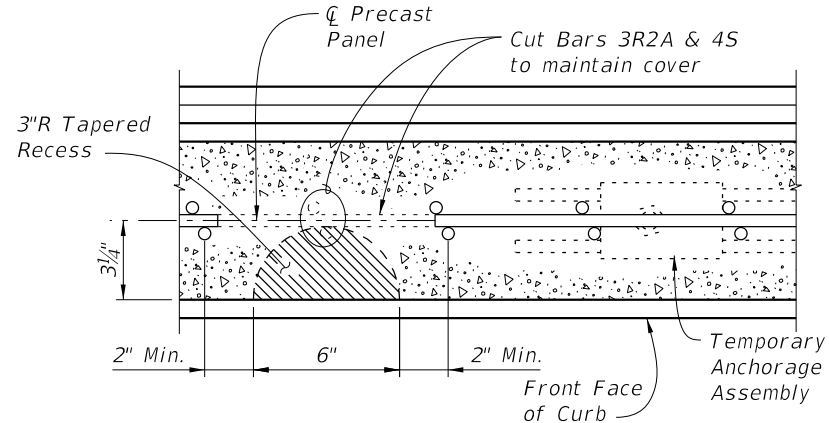
42" CONCRETE PEDESTRIAN/ BICYCLE RAILING

Interim Date	Sheet No.
07/01/10	1 of 2
Index No.	
825	



TYPICAL ELEVATION WITH PRECAST PANELS
(Reinforcing Steel not shown for clarity)

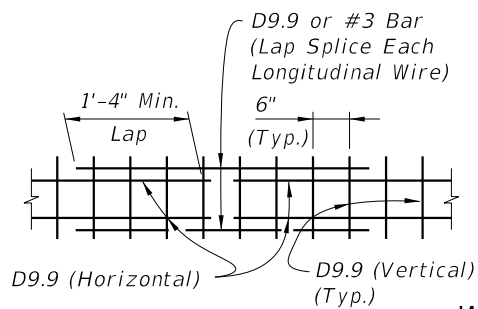
* See Note on Sheet 1



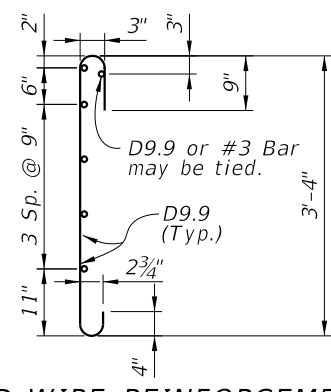
SECTION C-C
TAPERED RECESS DETAIL
(Curb Reinforcing not shown for clarity)

ALTERNATE REINFORCING (WELDED WIRE REINF.) DETAILS

NOTE: Place wire panels to ensure vertical wire is within 4" of end of precast concrete panel.



SPLICE DETAIL
(Between WWR Sections)

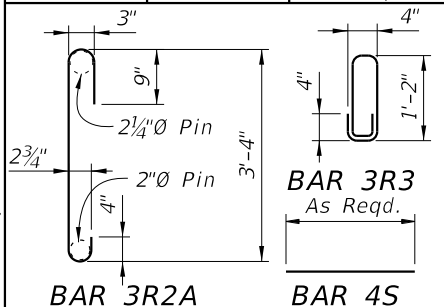


WELDED WIRE REINFORCEMENT (WWR)
(2 Pieces Req'd.)

CONVENTIONAL REINFORCING STEEL BENDING DIAGRAMS

BILL OF REINFORCING STEEL

MARK	SIZE	LENGTH
R2A	3	4'-11"
R3	3	4'-0"
S	4	As Req'd.



CONCRETE PARAPET NOTES:

- Concrete parapet shall be placed vertical and top surface shall be level transversely.
- Payment will be made under 42" Concrete Parapet (Pedestrian/Bicycle), LF (Item No. 521-6-12).

PRECAST PANEL NOTES:

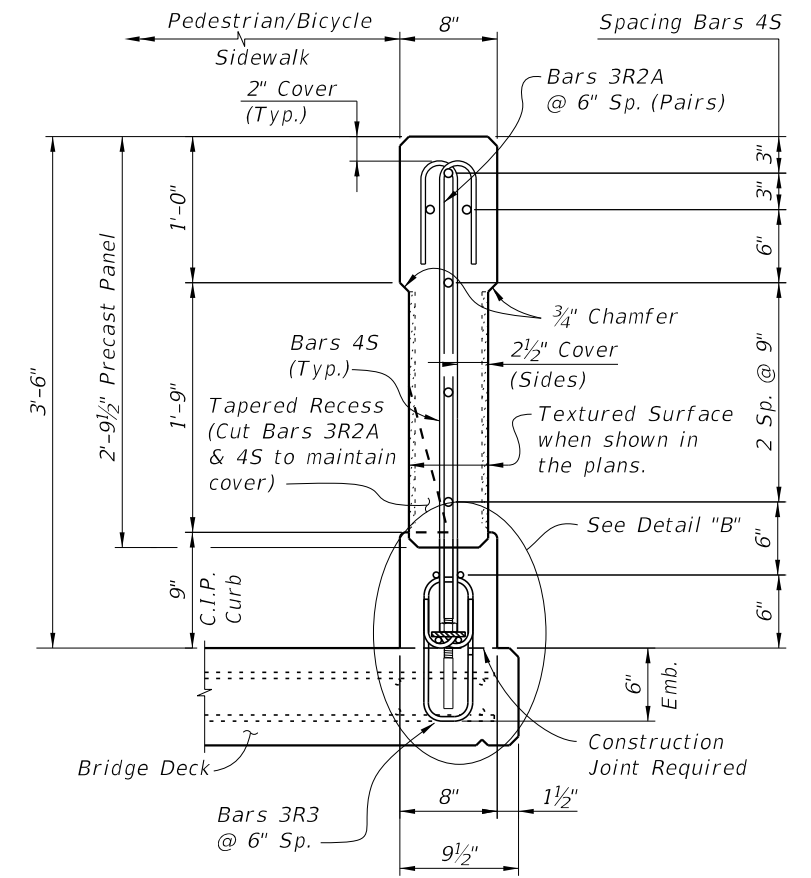
- Panel concrete shall be Class III for slightly or moderately aggressive or Class IV for extremely aggressive environments.
- Precast Panel Tolerances:
 - Overall Height & Width: $\pm 1/4"$
 - Thickness: $\pm 1/4"$
 - Plane of side mold: $\pm 1/16"$
 - Openings: $\pm 1/2"$
 - Out of Square: $1/8"$ per 5ft.
 - Warping: $1/16"$ per foot distance to nearest corner.
 - Bowing: $1/240$ panel dimension.
 - Surface Smoothness: $\pm 1/16"$ along 10ft. straight edge (Non-textured Surface)
 - Adjacent panel alignment: $\pm 1/4"$

TEMPORARY ANCHORAGE ASSEMBLY NOTES:

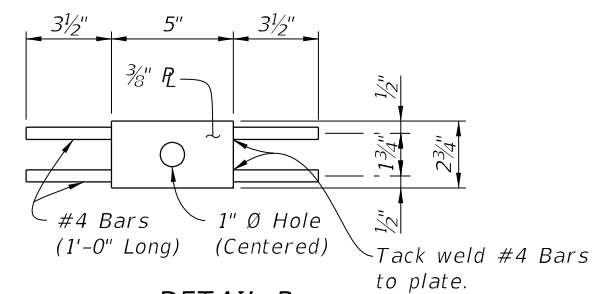
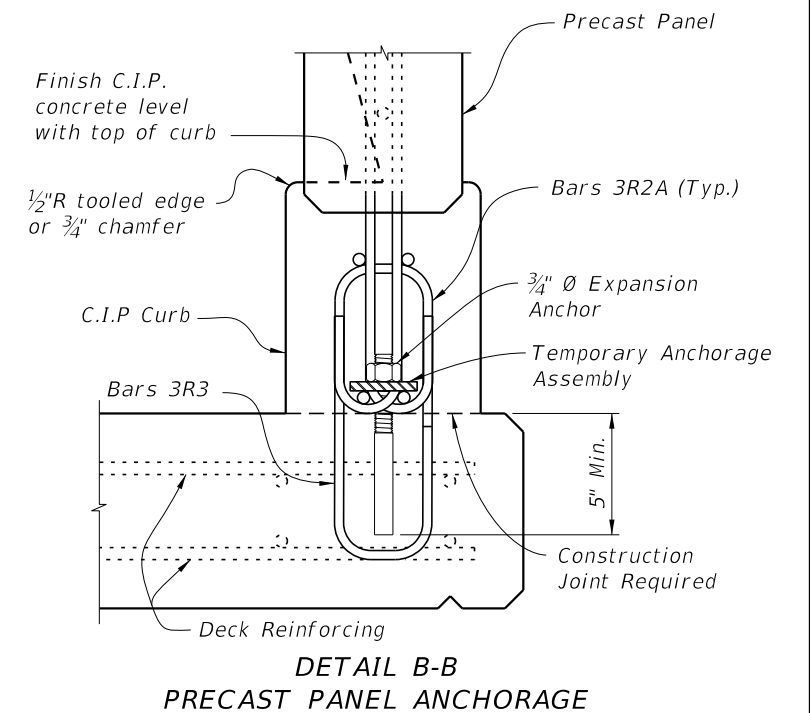
- Anchor plate shall be ASTM A36.
- Anchor Bolts shall be zinc plated with pullout strength of 16,000 lbs. for 5" embedment in Class II concrete.

REINFORCING STEEL NOTES:

- All bar dimensions in the bending diagrams are out to out.
- The reinforcement for the parapet on a retaining wall shall be the same as detailed above for a 8" deck.
- All reinforcing steel at the open joints shall have a 2" minimum cover.
- Bars 4S in C.I.P. curb may be continuous or spliced at the construction joints. Bar splices for Bars 4S shall be a minimum of 1'-4".
- At the option of the Contractor Welded Wire Reinforcement (WWR) may be used in lieu of all Bars 3R2A and 4S. Welded Wire Reinforcement shall conform to Specification Section 931.



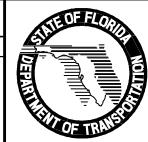
SECTION A-A
(Typical Precast Section Thru Bridge Deck Shown, Section Thru Approach Slab Similar)



DETAIL B
TEMPORARY ANCHORAGE ASSEMBLY

REVISIONS

DATE	BY	DESCRIPTION	DATE	BY	DESCRIPTION
07/01/10	SJN	New Design Standard			



2010 Interim Design Standard

42" CONCRETE PEDESTRIAN/BICYCLE RAILING

Interim Date: 07/01/10
Sheet No.: 2 of 2
Index No.: 825