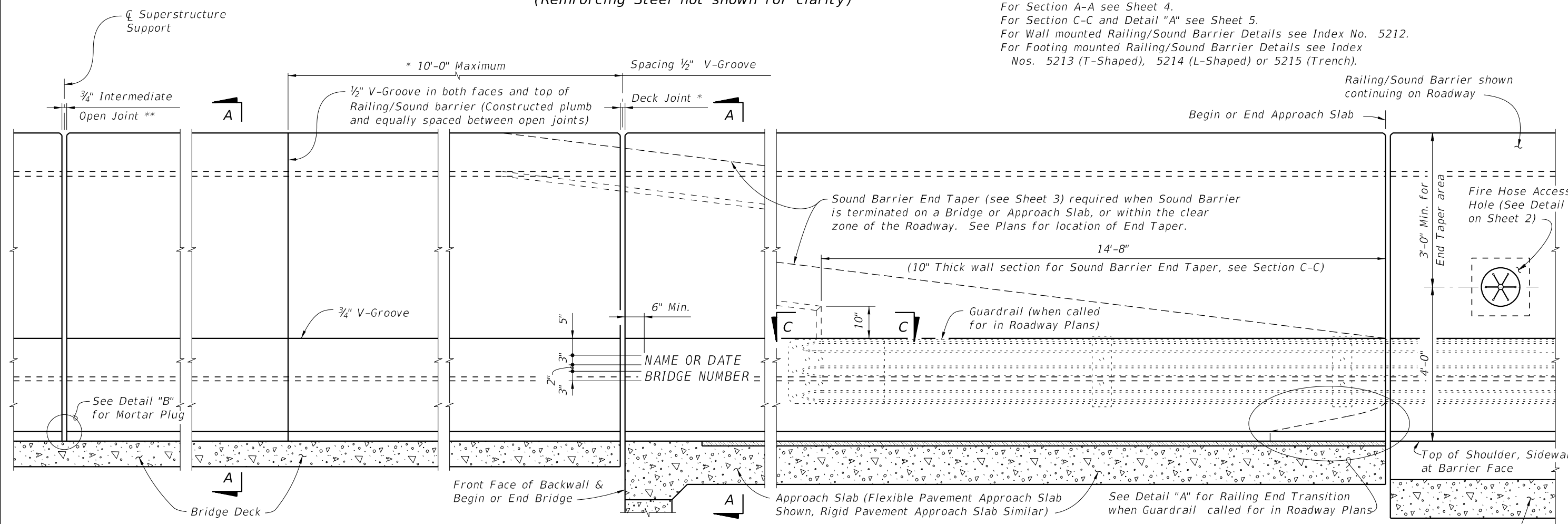


PLAN (BRIDGE MOUNTED RAILING/SOUND BARRIER SHOWN, WALL OR FOOTING MOUNTED RAILING/SOUND BARRIER SIMILAR) (Reinforcing Steel not shown for clarity)

CROSS REFERENCE:
 For Detail "B" and V-Groove Lettering Detail see Sheet 2.
 For Section A-A see Sheet 4.
 For Section C-C and Detail "A" see Sheet 5.
 For Wall mounted Railing/Sound Barrier Details see Index No. 5212.
 For Footing mounted Railing/Sound Barrier Details see Index Nos. 5213 (T-Shaped), 5214 (L-Shaped) or 5215 (Trench).



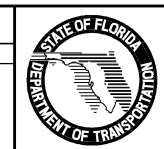
ELEVATION OF INSIDE FACE OF RAILING/SOUND BARRIER (BRIDGE MOUNTED RAILING/SOUND BARRIER SHOWN, WALL OR FOOTING MOUNTED RAILING/SOUND BARRIER SIMILAR) (Reinforcing Steel not shown for clarity)

T-Shaped Spread Footing Shown, L-Shaped Spread Footing, Trench Footing Similar and Junction Slab similar

* On Bridges see Superstructure and Approach Slab Sheets for actual dimensions and joint orientation. Open Railing/Sound Barrier Joints at Deck Expansion Joint locations shall match the dimensions of the Deck Joint. For treatment of Railing/Sound Barrier walls on skewed bridges see Index No. 490. Deck Joint at Begin Bridge or End Bridge shown, Deck Joint at ϕ Pier or Intermediate Bent, Junction Slab or Footing similar.

** $\frac{3}{4}$ " Intermediate Open Joints shall be constructed plumb and provided at :
 (1) - Superstructure supports where slab is continuous.
 (2) - Construction Joints for Junction Slabs and Footings.

REVISIONS					
DATE	BY	DESCRIPTION	DATE	BY	DESCRIPTION
07/01/10	GJM	Deleted INSTRUCTIONS TO DESIGNER. Changed spacing of V-Grooves and Intermediate Open Joint.			



2010 Interim Design Standard
TRAFFIC RAILING/SOUND BARRIER (8'-0")

Interim Date: 07/01/10
 Sheet No.: 1 of 5
 Index No.: **5210**