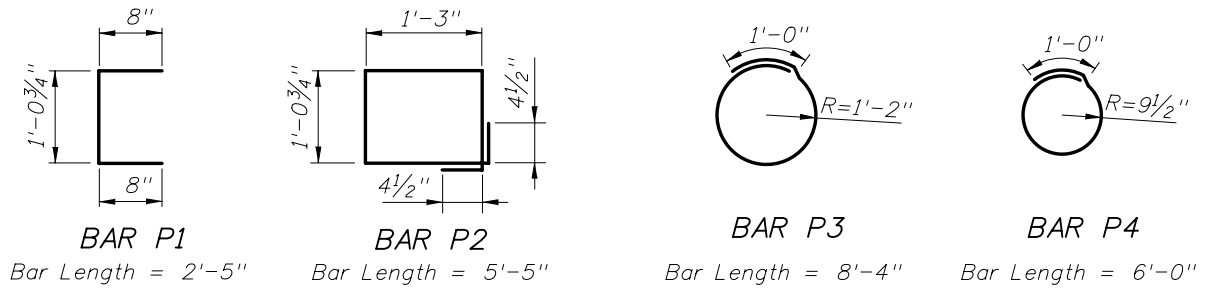


BAR BENDING DETAILS

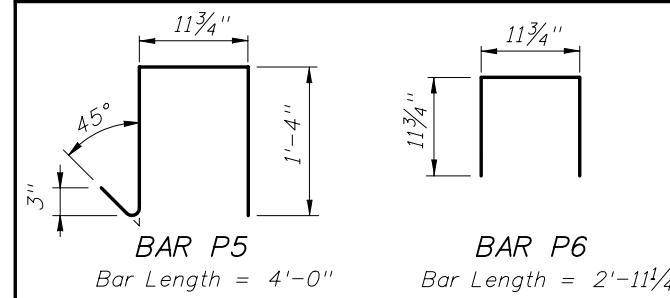
All bar dimensions in bending diagrams are out-to-out. All bars not shown in the bending diagrams are straight.

POST & PILE



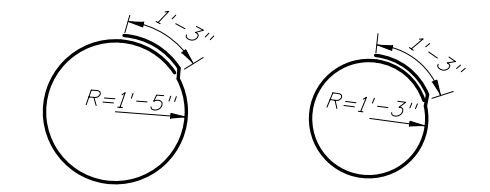
BAR P1 Bar Length = 2'-5"
BAR P2 Bar Length = 5'-5"
BAR P3 Bar Length = 8'-4"
BAR P4 Bar Length = 6'-0"

90° CORNER POST & PILE



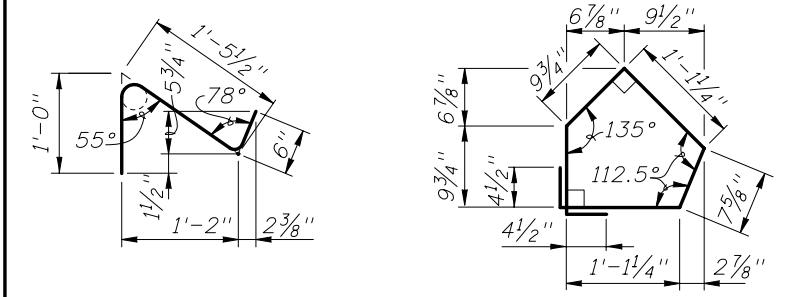
BAR P5 Bar Length = 4'-0"
BAR P6 Bar Length = 2'-11 1/4"

CAST-IN-PLACE COLLAR

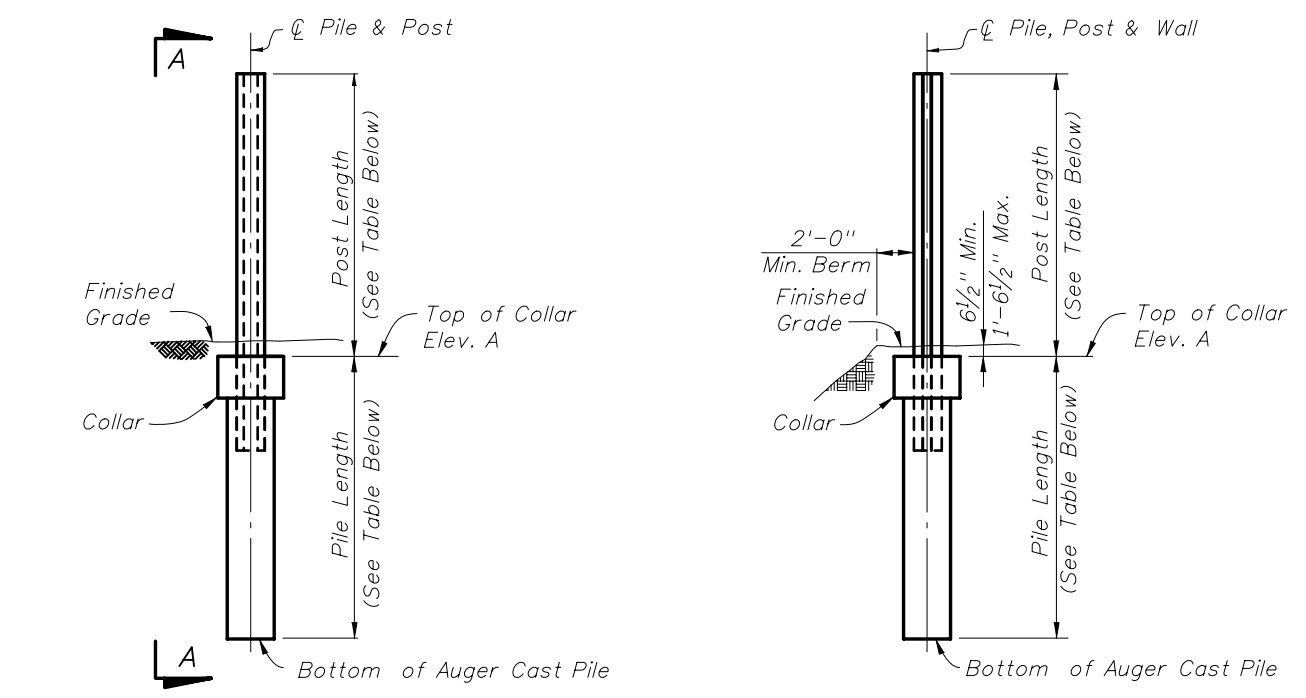


BAR P9 Bar Length = 10'-2"
BAR P10 Bar Length = 9'-2"

45° CORNER POST & PILE



BAR P7 (POST) Bar Length = 2'-8"
BAR P8 (PILE) Bar Length = 5'-0 1/4"



PILE/POST ELEVATION
 (Pile/Post Connection Option A Shown)

VIEW A-A
 (Pile/Post Connection Option A Shown)

NOTES:
 Bars A, B & P1 are used in Options A, B & E.
 Bars C are only used in Option A.
 Bars C2 are only used in Option B.
 Bars P2 are used in Options A & E.
 Bars P3 are only used in Option A.
 Bars P4 are only used in Option B.
 Bars P5 & P6 are only used in 90° Corner Posts.
 Bars P7 & P8 are only used in 45° Corner Posts.
 Bars P9 & P10 are used in the Cast-In-Place Collar Options.

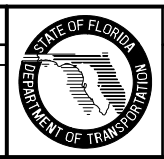
For Bar Designations, See Index No. 5205.

POST AND PILE DIMENSIONS							TABLE OF REINFORCING STEEL												
WALL TYPE	POST LENGTH WITHOUT CAP	POST LENGTH WITH CAP	PILE LENGTH OPTION A		PILE LENGTH OPTIONS B, C, D & E		PILE/POST REINFORCING										CAST-IN-PLACE COLLAR		
			10'-0" POST SPACING	20'-0" POST SPACING	10'-0" POST SPACING	20'-0" POST SPACING	10'-0" POST SPACING			20'-0" POST SPACING			BARS C	BARS C2	BARS P1, P2, P3, P4, P5, P6, P7 & P8	BARS P9	BARS P10		
							BARS A	BARS B		BARS D	BARS A	BARS B						BARS D	
SIZE	SIZE	DIM 'A'	SIZE	SIZE	SIZE	DIM 'A'	SIZE	SIZE	SIZE	DIM 'A'	SIZE	SIZE	SIZE	SIZE	SIZE	SIZE	SIZE		
A	12'-0 1/2"	12'-2 1/2"	11'-0"	14'-0"	12'-0"	15'-0"	#4	#4	10'-0"	#4	#5	#5	9'-0"	#6	#9	#7	#4	#5	#5
B	13'-0 1/2"	13'-2 1/2"	11'-0"	15'-0"	12'-0"	16'-0"	#4	#4	10'-7"	#5	#5	#5	8'-10"	#7	#9	#7	#4	#5	#5
C	14'-0 1/2"	14'-2 1/2"	12'-0"	16'-0"	13'-0"	17'-0"	#4	#4	10'-5"	#5	#6	#6	10'-4"	#7	#9	#7	#4	#5	#5
D	15'-0 1/2"	15'-2 1/2"	12'-0"	17'-0"	13'-0"	18'-0"	#5	#5	12'-11"	#6	#6	#6	10'-3"	#8	#9	#7	#4	#5	#5
E	16'-0 1/2"	16'-2 1/2"	13'-0"	17'-0"	14'-0"	18'-0"	#5	#5	12'-9"	#6	#7	#7	11'-10"	#8	#9	#7	#4	#5	#5
F	17'-0 1/2"	17'-2 1/2"	14'-0"	18'-0"	14'-0"	19'-0"	#5	#5	12'-7"	#6	#7	#7	11'-8"	#9	#9	#7	#4	#5	#5
G	18'-0 1/2"	18'-2 1/2"	14'-0"	19'-0"	15'-0"	20'-0"	#6	#6	14'-11"	#7	#8	#8	13'-1"	#10	#9	#7	#4	#5	#5
H	19'-0 1/2"	19'-2 1/2"	15'-0"	20'-0"	15'-0"	21'-0"	#6	#6	14'-10"	#7	#8	#8	13'-0"	#10	#9	#7	#4	#5	#5
I	20'-0 1/2"	20'-2 1/2"	15'-0"	21'-0"	16'-0"	22'-0"	#6	#6	14'-9"	#8	#9	#9	14'-3"	#11	#9	#7	#4	#5	#5
J	21'-0 1/2"	21'-2 1/2"	16'-0"	22'-0"	16'-0"	24'-0"	#6	#6	14'-8"	#8	#9	#9	14'-2"	#11	#9	#7	#4	#5	#5
K	22'-0 1/2"	22'-2 1/2"	16'-0"	23'-0"	17'-0"	26'-0" *	#7	#7	17'-1"	#8	#9	#9	14'-1"	2 ~ #14 & 1 ~ #9	#9	#7	#4	#5	#5

* For SteelPost Option "D", use 30'-0".

NOTE: USE THIS INDEX ONLY WHEN SOIL SPT N VALUES ARE BETWEEN 10 AND 40

REVISIONS			
DATE	BY	DESCRIPTION	DATE
01/01/10	CMH	Changed Bar P3 radius. Changed Bars P5 & P6.	



2010 Interim Design Standard

**PRECAST SOUND BARRIERS -
 PILE DEPTH AND REINFORCING SUMMARY**

Interim Date: 01/01/10
 Sheet No. 1 of 1
 Index No. **5206**