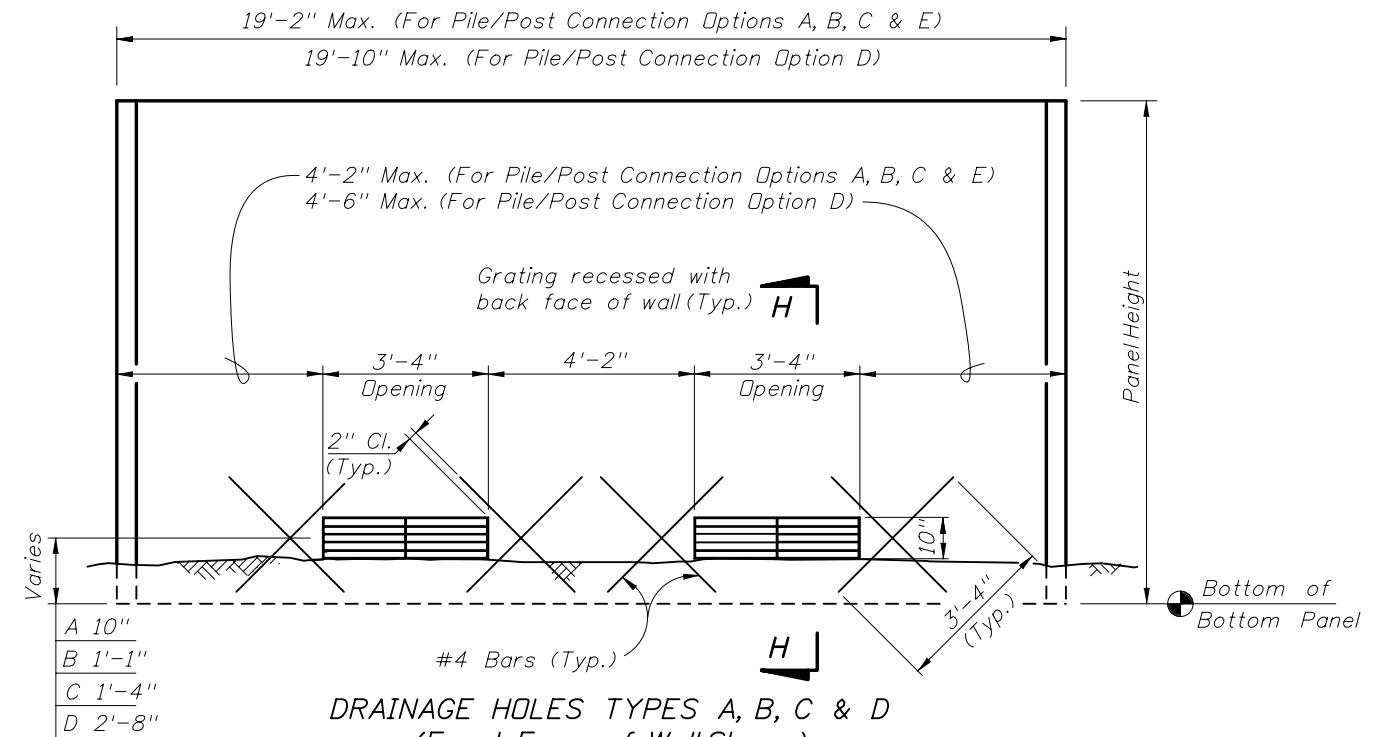


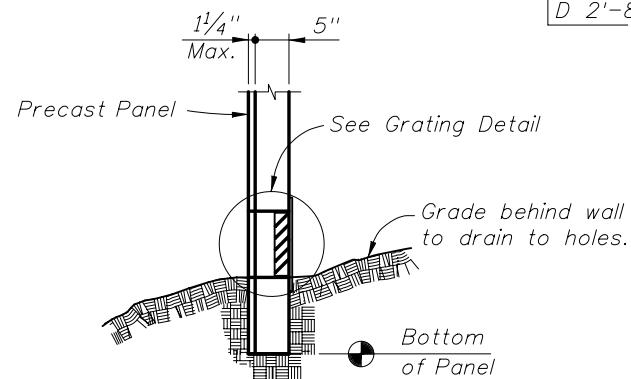
**FIRE HOSE ACCESS HOLE TYPICAL DETAIL**  
 (Front Face of Wall Shown)  
 (Flush Panel Option Shown)  
 Recessed Panel Option Similar)

NOTE: Fire Hose Access Point to be located at or near fire hydrants

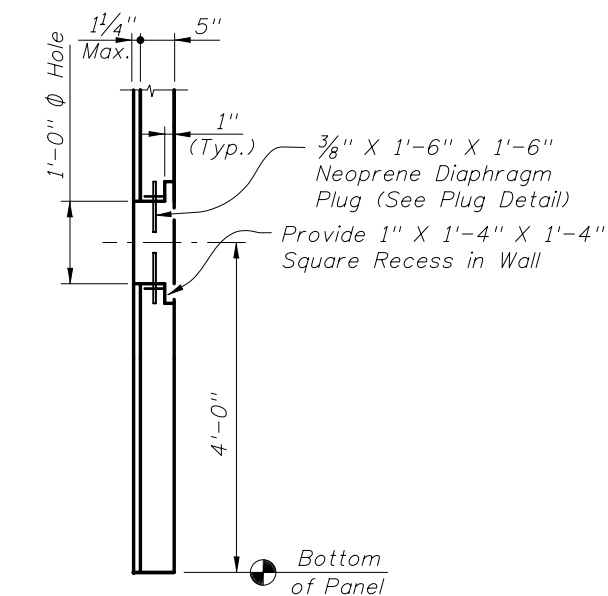


**DRAINAGE HOLES TYPES A, B, C & D**  
 (Front Face of Wall Shown)  
 (Flush Panel Option Shown)  
 Recessed Panel Option Similar)

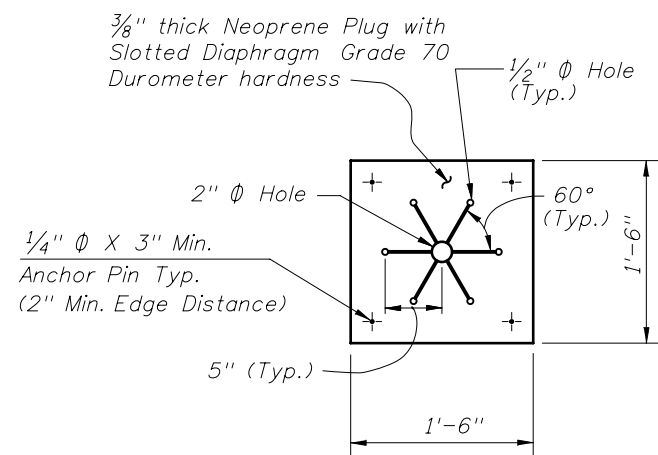
NOTE: Hole Types A, B, C and D refer to distance from bottom of panel to center of opening. See Wall Control Drawings.



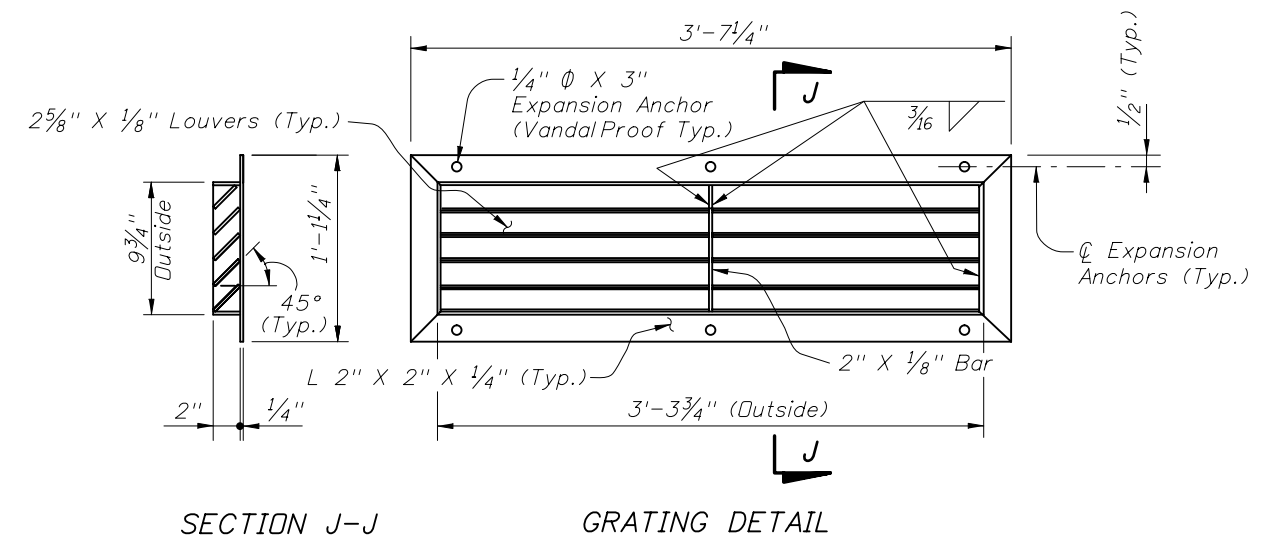
**SECTION H-H**  
 (Flush Panel Option Shown)  
 Recessed Panel Option Similar)



**SECTION G-G**  
 (Flush Panel Option Shown)  
 Recessed Panel Option Similar)



**PLUG DETAIL**

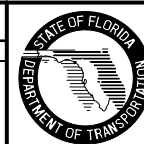


**SECTION J-J GRATING DETAIL**

NOTES:  
 Grating shall be ASTM A 36 steel and shall be hot dip galvanized after assembly in accordance with ASTM Specification A 123.  
 Expansion anchors shall be in accordance with ASTM A 307 (Galvanized).  
 Welding shall be in accordance with the current edition of the ANSI/AWS D1.1 Welding Code.

**REVISIONS**

DATE	BY	DESCRIPTION	DATE	BY	DESCRIPTION
01/01/10	SJN	Deleted 4 3/4\"/>			



2010 Interim Design Standard

**PRECAST SOUND BARRIERS - FIRE HOSE ACCESS HOLE & DRAINAGE DETAILS**

Interim Date	Sheet No.
01/01/10	1 of 1
Index No.	
<b>5204</b>	