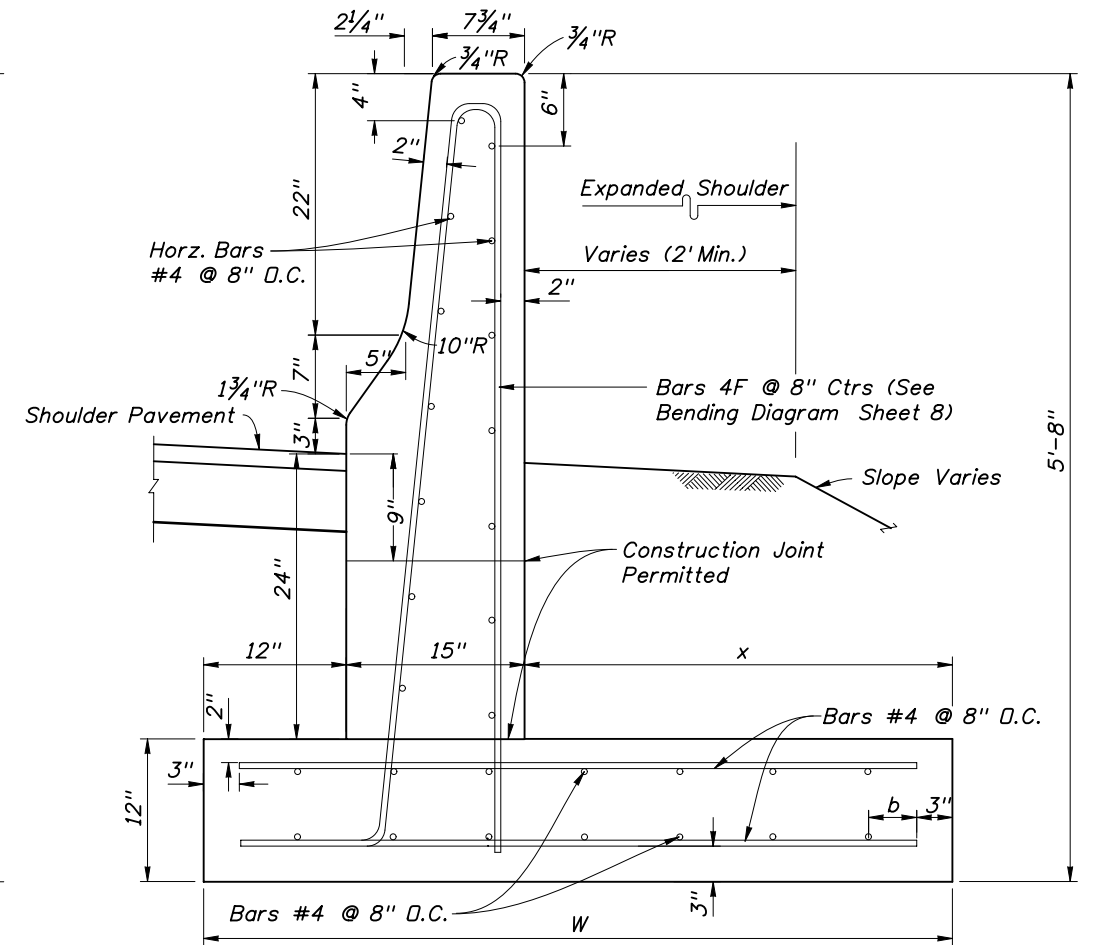
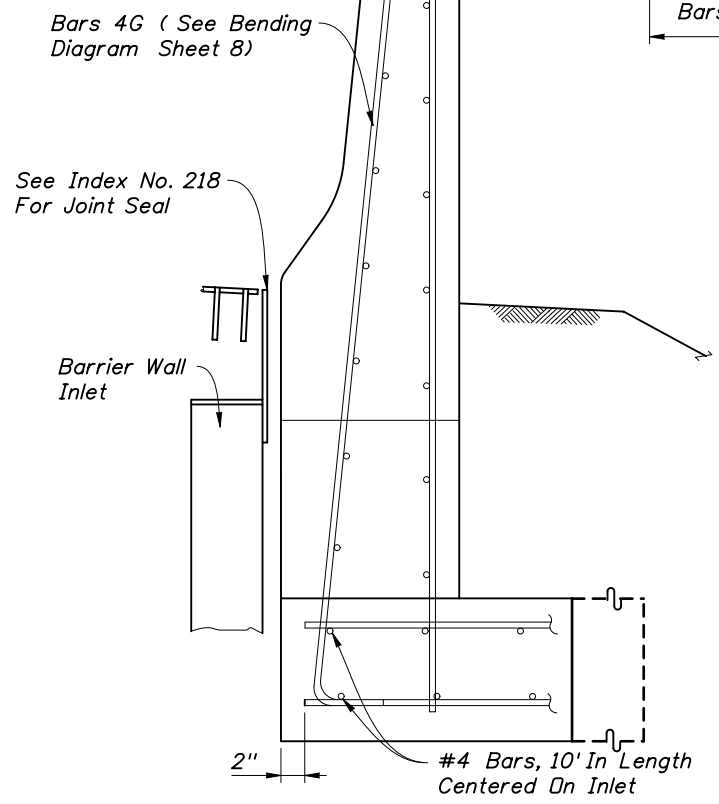


NOTE: All longitudinal reinforcement #4 bars.
CANTILEVER WALL



NOTE: All longitudinal reinforcement #4 bars.
L-WALL



**REINFORCING STEEL MODIFICATIONS
AT BARRIER WALL INLETS (INDEX NO. 218)**

DIMENSIONS AND QUANTITIES											
CANTILEVER WALL						L-WALL					
Length* Of Barrier Wall	W	x	a	Class II Conc. CY Per Lin. Ft.	Rein. Steel Lbs. Per Lin. Ft.	Length* Of Barrier Wall	W	x	b	Class II Conc. CY Per Lin. Ft.	Rein. Steel Lbs. Per Lin. Ft.
≥ 65'	3'-3"	1'-0"	5"	0.30	31	≥ 60'	3'-6"	1'-3"	7"	0.31	32
57' to 64'	3'-9"	1'-6"	3"	0.32	34	50' to 59'	4'-0"	1'-9"	5"	0.33	34
50' to 56'	4'-3"	2'-0"	3"	0.33	36	40' to 49'	4'-9"	2'-6"	6"	0.35	37
41' to 49'	5'-0"	2'-9"	7"	0.36	38	35' to 39'	5'-3"	3'-0"	4"	0.37	39
36' to 40'	5'-6"	3'-3"	5"	0.38	40	30' to 34'	5'-9"	3'-6"	2"	0.39	42
28' to 35'	6'-6"	4'-3"	3"	0.42	45	25' to 29'	6'-6"	4'-3"	3"	0.42	45
25' to 27'	7'-0"	4'-9"	7"	0.44	46	20' to 24'	7'-6"	5'-3"	2"	0.45	49

Quantities shown are for information only. For method of payment see payment note. Barrier wall inlets (Index 218) shall be isolated from the barrier wall stem and footing by 1" expansion material.

* All walls may be made up of segments of 20' or more in length provided the segments are joined by a transverse joint in accordance with Detail B, Sheet 2. Segments shall have dimensions same as walls above.

REINFORCED CONCRETE BARRIER WALL (SHOULDER)

PAYMENT:

Wall to be paid for under the contract unit price for Shoulder Concrete Barrier Wall (Rigid-Shoulder), LF

DESIGN NOTES:

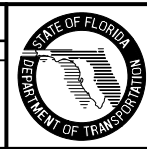
Reduce the vertical steel spacing to 4 inches O.C. a distance of 4 feet each side of all cold joints.

Use of this barrier wall should be limited to special applications such as hazard encroachment into the clear zone where barrier wall deflection, rotation or translation cannot be tolerated; example hazards to consider are as follows:

- (a) Structure supporting piers, bents and pylons
- (b) Pumping, metering, control or other similar critical stations
- (c) Quarries
- (d) Intolerable vertical drops
- (e) Historic structures or monuments
- (f) Rail transit travelway or passenger station
- (g) Other similar occupancies

NCHRP report 350 Test Level (TL-4) Vehicle: 8000S, 50 mph, 25°.
Vehicle force applications:
18 kips Vertical at top of railing;
54 kips Horizontal at 32" above pavement.

REVISIONS					
DATE	BY	DESCRIPTION	DATE	BY	DESCRIPTION
01/01/10	MTP	Added: The Text "Shoulder Pavement" Changed: The Expanded Shoulder to Match the Shoulder Pavement Elevation.			



2010 Interim Design Standard

CONCRETE BARRIER WALL

Interim Date	Sheet No.
01/01/10	7 of 25
Index No.	
410	