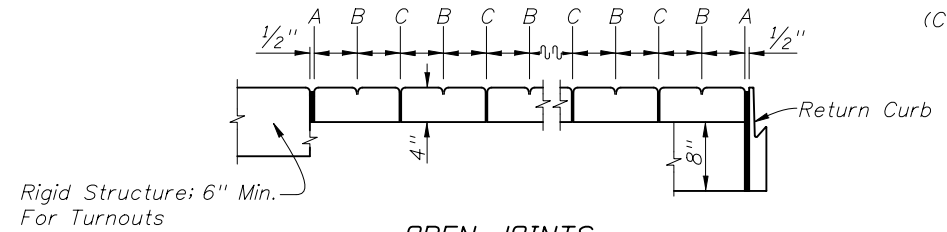


** "E" Joint(s) Required When Length Exceeds 30'

SAWED JOINTS



**OPEN JOINTS
EXAGGERATED SCALE**

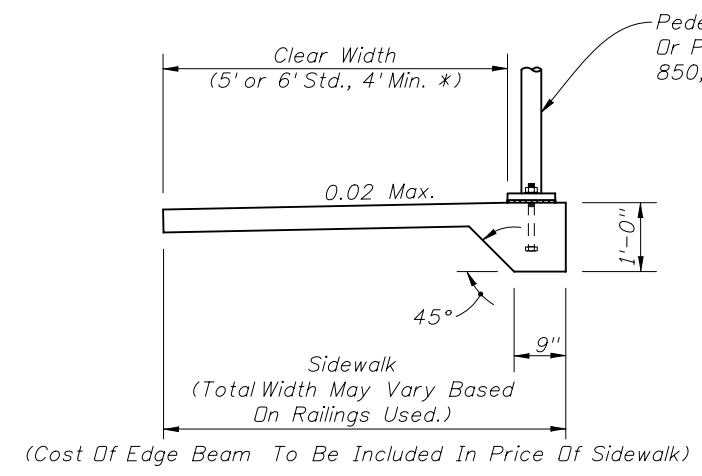
**LONGITUDINAL SECTION
SIDEWALK JOINTS**

JOINT LEGEND

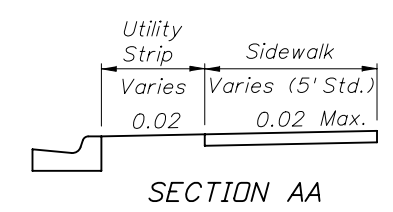
- A- 1/2" Expansion Joints (Preformed Joint Filler)
- B- 1/8" Dummy Joints, Tooled
- C- 1/8" Formed Open Joints
- D- 3/16" Saw Cut Joints, 1 1/2" Deep (within 96 hours) Max. 5' Centers
- E- 3/16" Saw Cut Joints, 1 1/2" Deep (within 12 hours) Max. 30' Centers
- F- 1/2" Expansion Joint When Run Of Sidewalk Exceeds 120'.
Intermediate locations when called for in the plans or at locations as directed by the Engineer.
- G- Cold Joint With Bond Breaker, Tooled

NOTES FOR CONCRETE SIDEWALK ON CURBED ROADWAYS

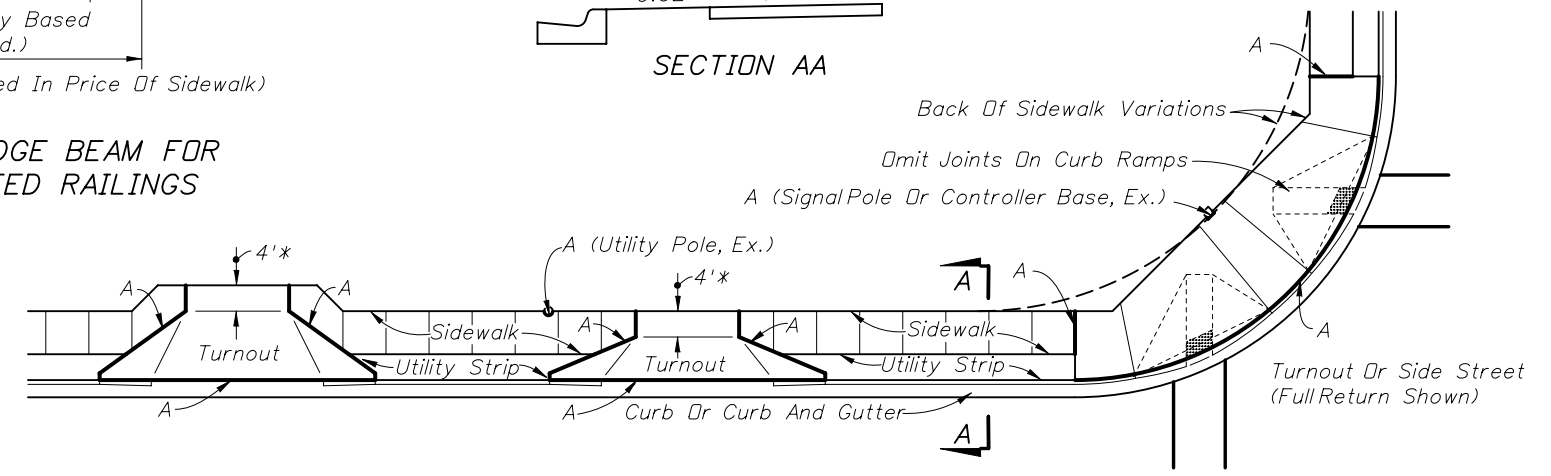
1. Sidewalks shall be constructed in accordance with Section 522 of the FDDT Standard Specifications. Public sidewalk curb ramps shall include detectable warnings and be constructed in accordance with Index No. 304. Detectable warnings are not required where sidewalks intersect urban flared turnouts.
2. Bond breaker material can be any impermeable coated or sheet membrane or preformed material having a thickness of not less than 6 mils nor more than 1/2".
3. For turnouts see Index No. 515.
4. Construct sidewalks with 1" thick Edge Beam through the limits of any surface mounted Pedestrian/Bicycle Picket Railing or Pipe Guiderail shown in the plans.
5. Sidewalk shall be paid for under the contract unit price for Sidewalk Concrete (___ Thick), S.Y.



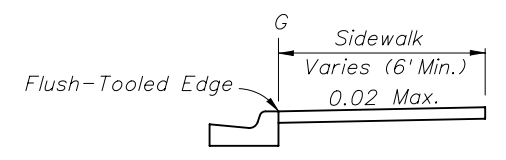
**SIDEWALK WITH EDGE BEAM FOR
SURFACE MOUNTED RAILINGS**



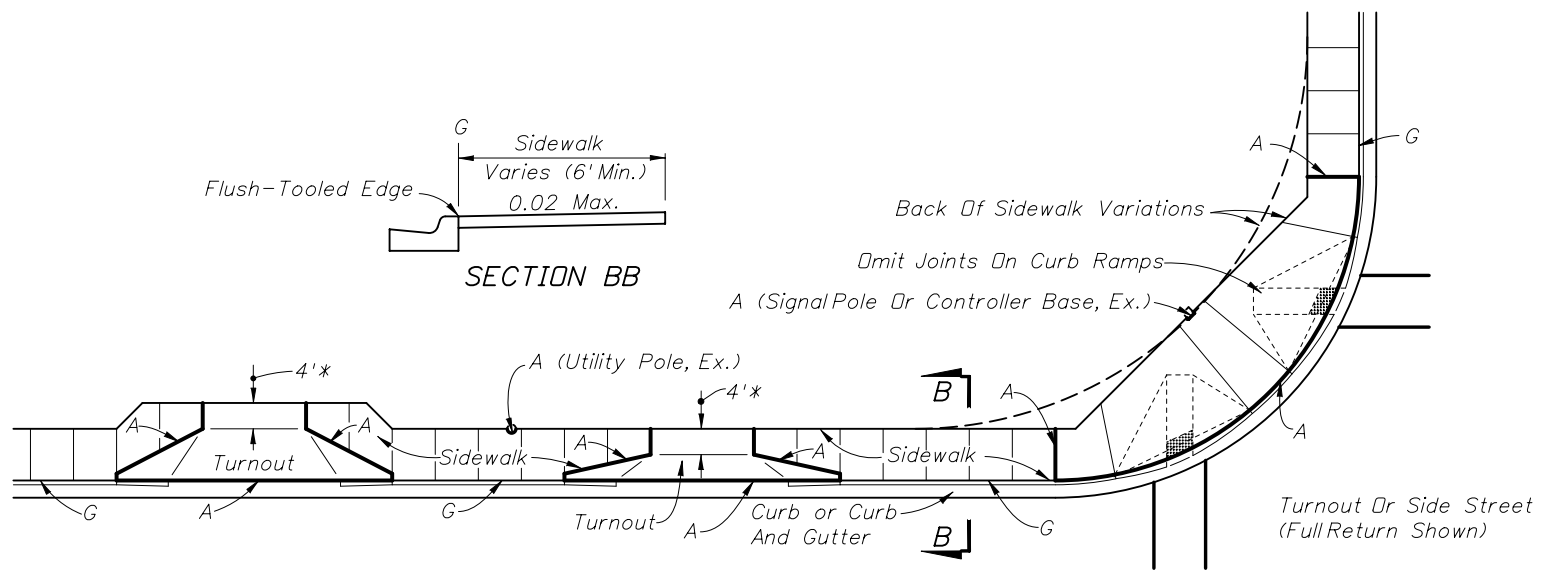
SECTION AA



SIDEWALK WITH UTILITY STRIP



SECTION BB

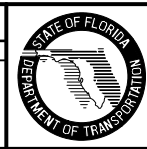


SIDEWALK WITHOUT UTILITY STRIP

* 4', May Be Reduced To 3' In Restricted Conditions When Approved By The Engineer

CONCRETE SIDEWALK FOR CURBED ROADWAYS

REVISIONS					
DATE	BY	DESCRIPTION	DATE	BY	DESCRIPTION
09/22/09	MTP	Offset the Driveway tapers 1 foot from the back of curb.			



2010 Interim Design Standard
CONCRETE SIDEWALK

Interim Date: 01/01/10
Sheet No. 1 of 2
Index No. **310**