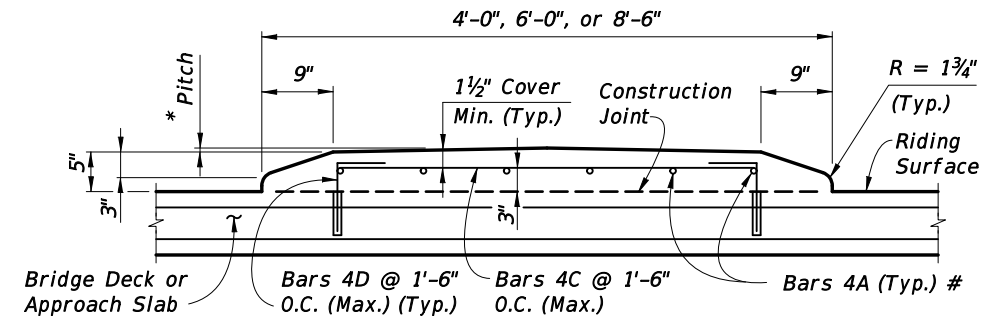
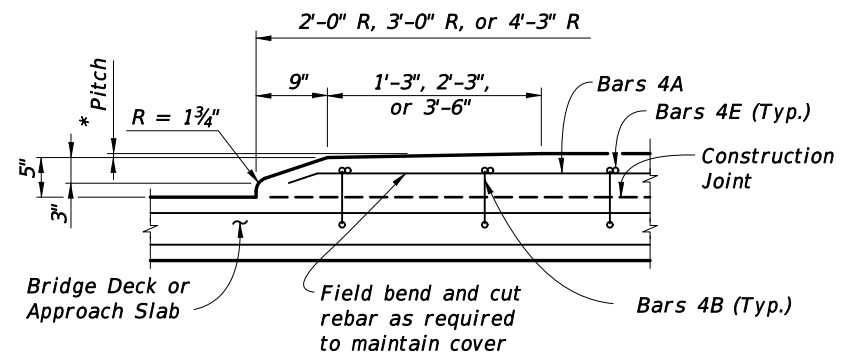


TYPICAL SECTION THRU TRAFFIC SEPARATOR
(Bridge Deck Shown, Approach Slab Similar)



TYPICAL SECTION THRU TRAFFIC SEPARATOR
(Bridge Deck Shown, Approach Slab Similar)

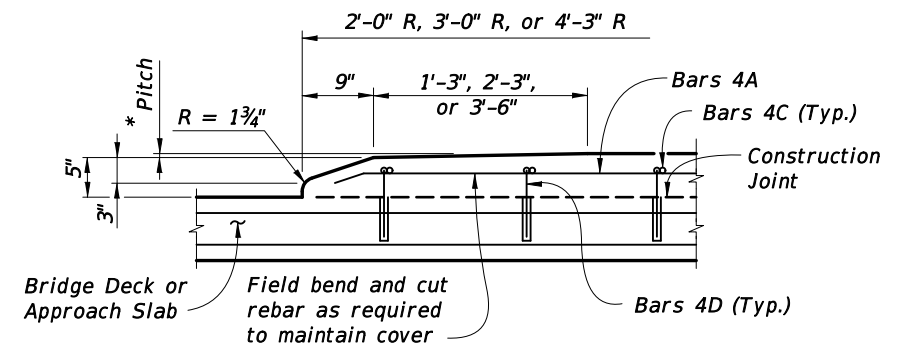
For 4'-0" width : Bars 4A @ 3 equal spaces (continuous).
 For 6'-0" width : Bars 4A @ 5 equal spaces (continuous).
 For 8'-6" width : Bars 4A @ 7 equal spaces (continuous).



LONGITUDINAL SECTION THRU TRAFFIC SEPARATOR AT NOSE
(Bridge Deck Shown, Approach Slab Similar)

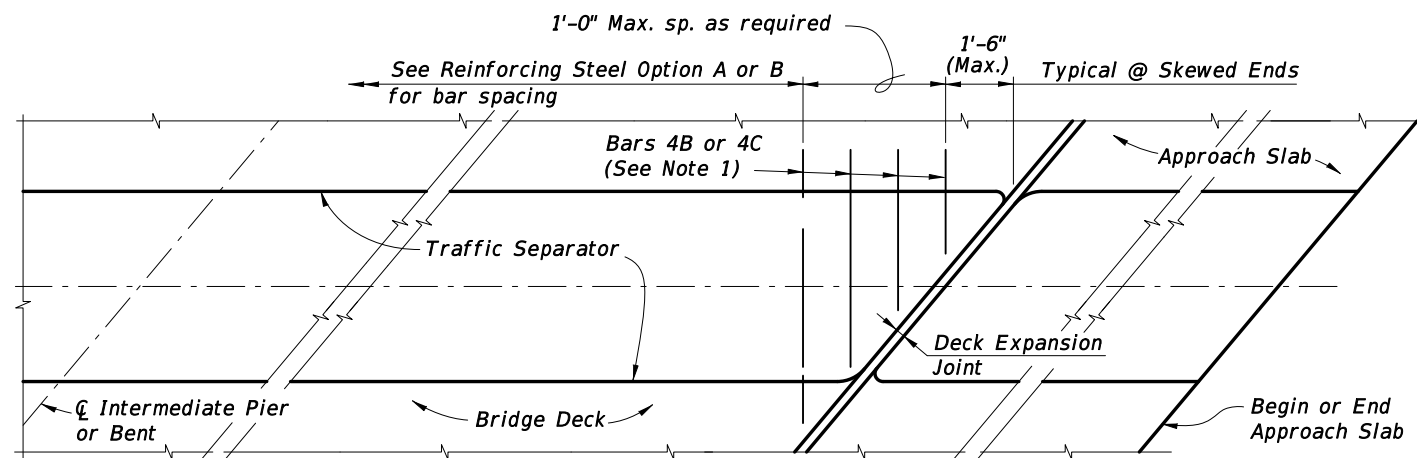
At the Contractor's option a one piece bar may be substituted for Bars 4B and 4E.

* Pitch:
 1/4" For 4'-0" Separator
 1/2" For 6'-0" Separator
 3/4" For 8'-6" Separator



LONGITUDINAL SECTION THRU TRAFFIC SEPARATOR AT NOSE
(Bridge Deck Shown, Approach Slab Similar)

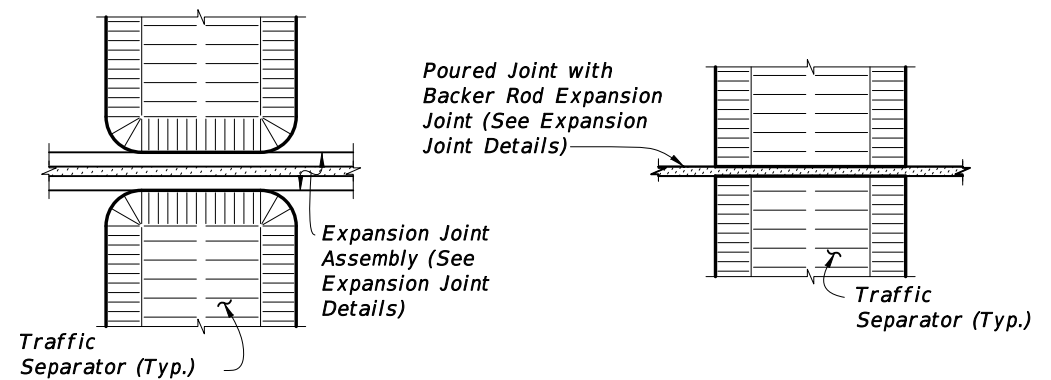
REINFORCING STEEL OPTION A



PARTIAL PLAN VIEW OF SKEWED BRIDGE DECK AND APPROACH SLAB WITH TRAFFIC SEPARATOR
(Deck Expansion Joint at Begin or End Bridge Shown, Expansion Joint at \varnothing Pier or Intermediate Bents Similar)

- Notes:
- 1) Traffic Separator transverse reinforcement adjacent to deck expansion joints shall be field adjusted to maintain clearance and spacing. Bars shall be field cut as shown, bars may be rotated to maintain clearance.
 - 2) Traffic Separator ends at deck expansion joints shall follow the deck joint limits. Drainage joints and 1/2" V-Grooves shall be placed perpendicular or radial to the \varnothing of the Traffic Separator. See Structures Plans, Superstructure and Approach Slab Sheets for details.
 - 3) See Structures Plans, Superstructure Sheets for actual dimensions and joint orientation.

REINFORCING STEEL OPTION B (NOT PERMITTED ON BRIDGE DECKS WITH PRESTRESSING STEEL)

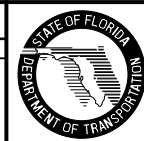


DETAIL AT EXPANSION JOINTS
(Strip Seal Shown, Other Armored Joint Types Similar)

DETAIL AT Poured Joint with BACKER ROD EXPANSION JOINTS

BRIDGE INSTALLATIONS - TYPE "E" CURB

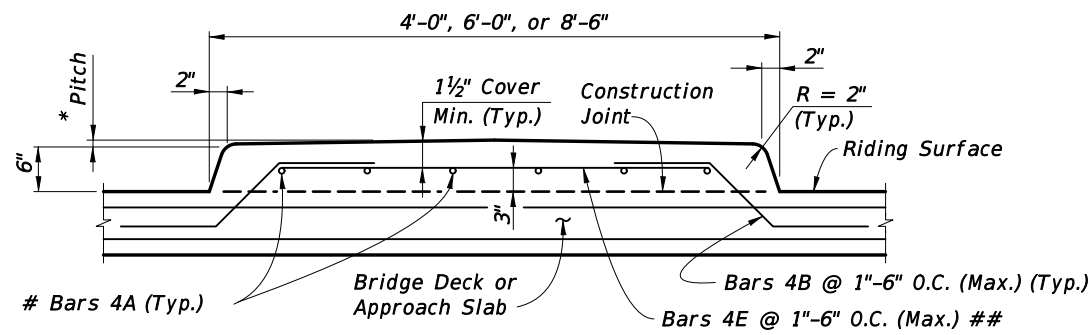
REVISIONS					
DATE	BY	DESCRIPTION	DATE	BY	DESCRIPTION
01/01/11	CMH	Added Skew Treatment from Index 490.			



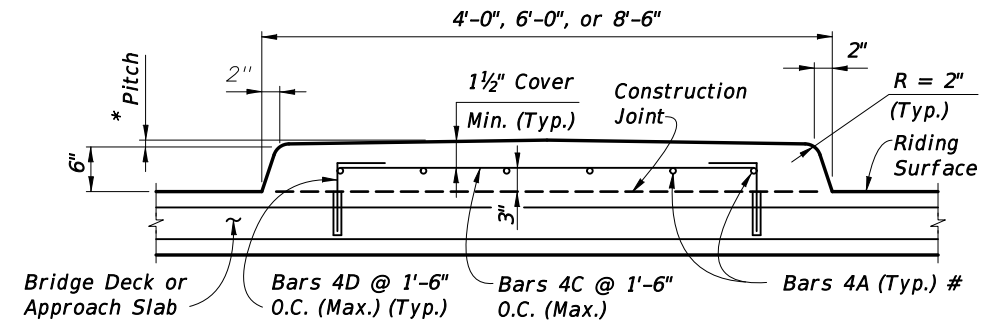
2010 Interim Design Standard

TRAFFIC SEPARATORS

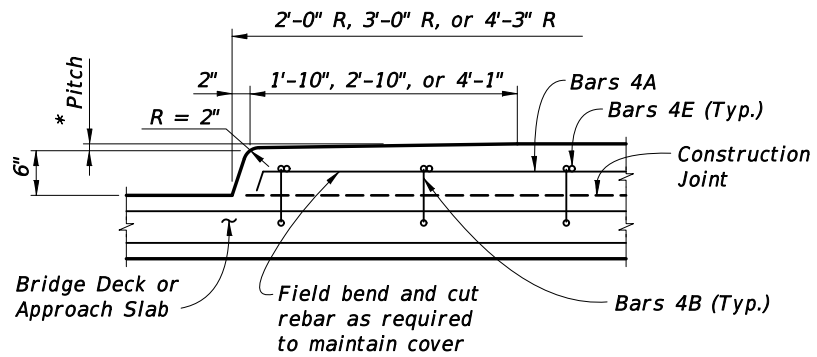
Interim Date: 01/01/11
 Sheet No.: 2 of 4
 Index No.: 302



TYPICAL SECTION THRU TRAFFIC SEPARATOR
(Bridge Deck Shown, Approach Slab Similar)



TYPICAL SECTION THRU TRAFFIC SEPARATOR
(Bridge Deck Shown, Approach Slab Similar)

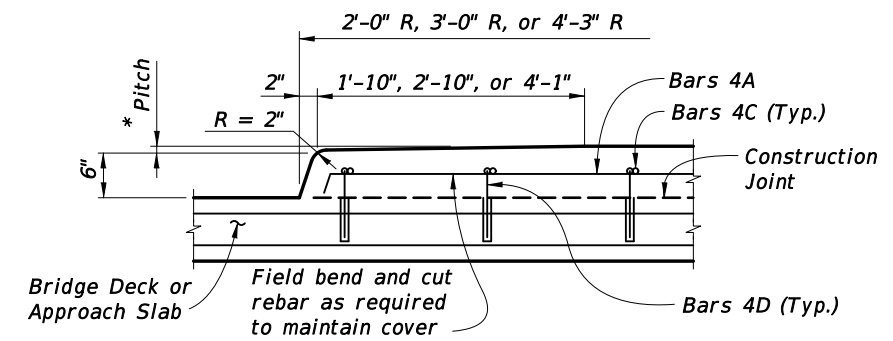


LONGITUDINAL SECTION THRU TRAFFIC SEPARATOR AT NOSE
(Bridge Deck Shown, Approach Slab Similar)

For 4'-0" width : Bars 4A @ 3 equal spaces (continuous).
 For 6'-0" width : Bars 4A @ 5 equal spaces (continuous).
 For 8'-6" width : Bars 4A @ 7 equal spaces (continuous).

At the Contractor's option a one piece bar may be substituted for Bars 4B and 4E.

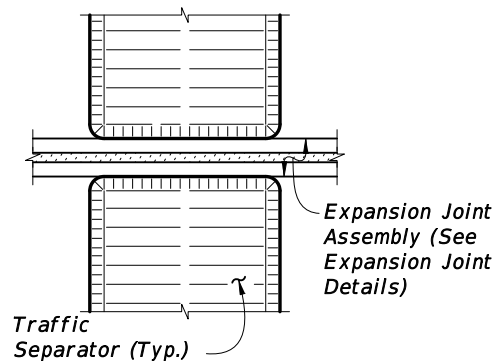
* Pitch:
 1/4" For 4'-0" Separator
 1/2" For 6'-0" Separator
 3/4" For 8'-6" Separator



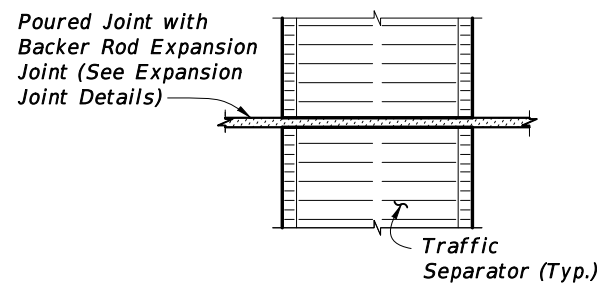
LONGITUDINAL SECTION THRU TRAFFIC SEPARATOR AT NOSE
(Bridge Deck Shown, Approach Slab Similar)

REINFORCING STEEL OPTION B (NOT PERMITTED ON BRIDGE DECKS WITH PRESTRESSING STEEL)

REINFORCING STEEL OPTION A



DETAIL AT EXPANSION JOINTS
(Strip Seal Shown, Other Armored Joint Types Similar)

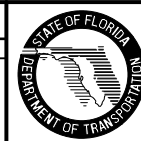


DETAIL AT POURED JOINT WITH BACKER ROD EXPANSION JOINTS

Note:
 Treatment of separators on straight bridges shown. For additional notes and treatment of separators on skewed bridges, see Sheet 2.

BRIDGE INSTALLATIONS - TYPE "F" CURB

REVISIONS					
DATE	BY	DESCRIPTION	DATE	BY	DESCRIPTION
01/01/11	CMH	Changed Note reference from Index No. 490 to "Sheet 2"			



2010 Interim Design Standard

TRAFFIC SEPARATORS

Interim Date: 01/01/11
 Sheet No.: 3 of 4
 Index No.: 302