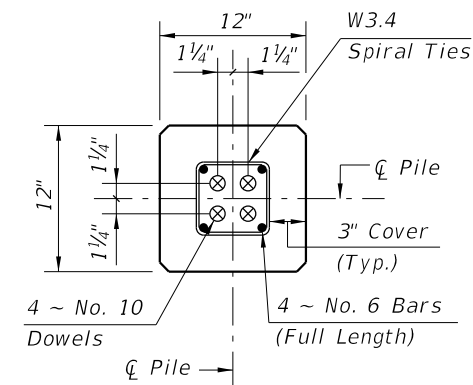
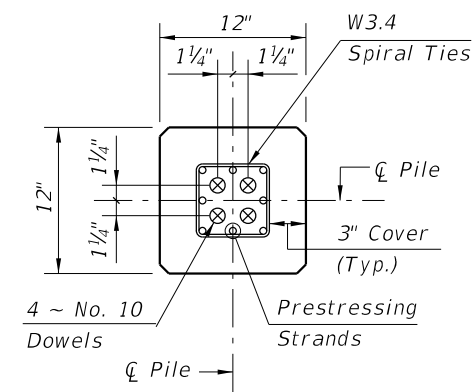


ELEVATION



SECTION D-D
(See Non-drivable Unforescen Reinforced Precast Pile Splice Detail)



SECTION E-E
(See Drivable Unforescen Prestressed Precast Pile Splice Detail)

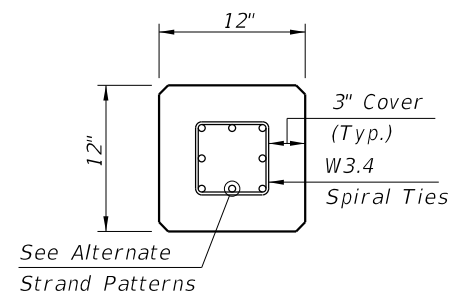
PILE SPLICE REINFORCEMENT DETAILS

NOTE:
Work this Index with Index No. 20600 - Notes and Details for Square Prestressed Concrete Piles and Index No. 20601 - Square Prestressed Concrete Pile Splices.

ALTERNATE STRAND PATTERNS

- 4 ~ 0.6" Ø, Grade 270 LRS, at 44 kips
- 8 ~ 1/2" Ø (Spec), Grade 270 LRS, at 25 kips
- 8 ~ 1/2" Ø, Grade 270 LRS, at 24 kips
- 8 ~ 7/16" Ø, Grade 270 LRS, at 23 kips
- 12 ~ 3/8" Ø, Grade 270 LRS, at 16 kips

NOTE:
Any of the given Alternate Strand Patterns may be utilized. The strands shall be located as follows:
Place one strand at each corner and place the remaining strands equally spaced between the corner strands. The total strand pattern shall be concentric with the nominal concrete section of the pile.



SECTION A-A

REVISIONS			
DATE	BY	DESCRIPTION	
07/01/10	GJM	"ALTERNATE STRAND PATTERNS" Added: "8 ~ 1/2" Ø (Spec), Grade 270 LRS, at 25 kips"; "8 ~ 1/2" Ø, Grade 270 LRS, at 24 kips"; Changed: 8 ~ 7/16" Ø, Grade 270 LRS, to "23 kips"; 12 ~ 3/8" Ø, Grade 270 LRS, to "16 kips". Deleted: "SR" strand pattern options.	



2010 Interim Design Standard
12" SQUARE PRESTRESSED CONCRETE PILE

Interim Date: 07/01/10
Sheet No.: 1 of 1
Index No.: **20612**